

Well Location Plat

CATAMOUNT ENERGY PARTNERS LLC
CAMPBELL #1

1878' FSL & 1006' FEL
Sec. 4, T33N, R7W, NMPM
La Plata Co., CO

Ground Elev. 6692.6 (NGVD 29)
(Randle 33-7-10 #2 NENW Sec. 10=6693.2)

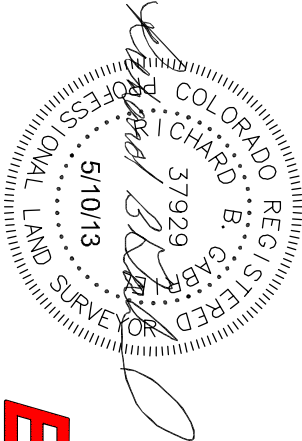
Lat. 37.13089° N
Long. 107.60853° W (NAD 83)

Field Completion Date: 09 May 2013
Plat Date: 10 May 2013

Non-crop Pasture
No Improvements
(P&A South 110')

This is to certify that this plat was prepared from field notes of actual surveys made by me, or under my supervision, and that the same are true and correct to the best of my knowledge and belief.

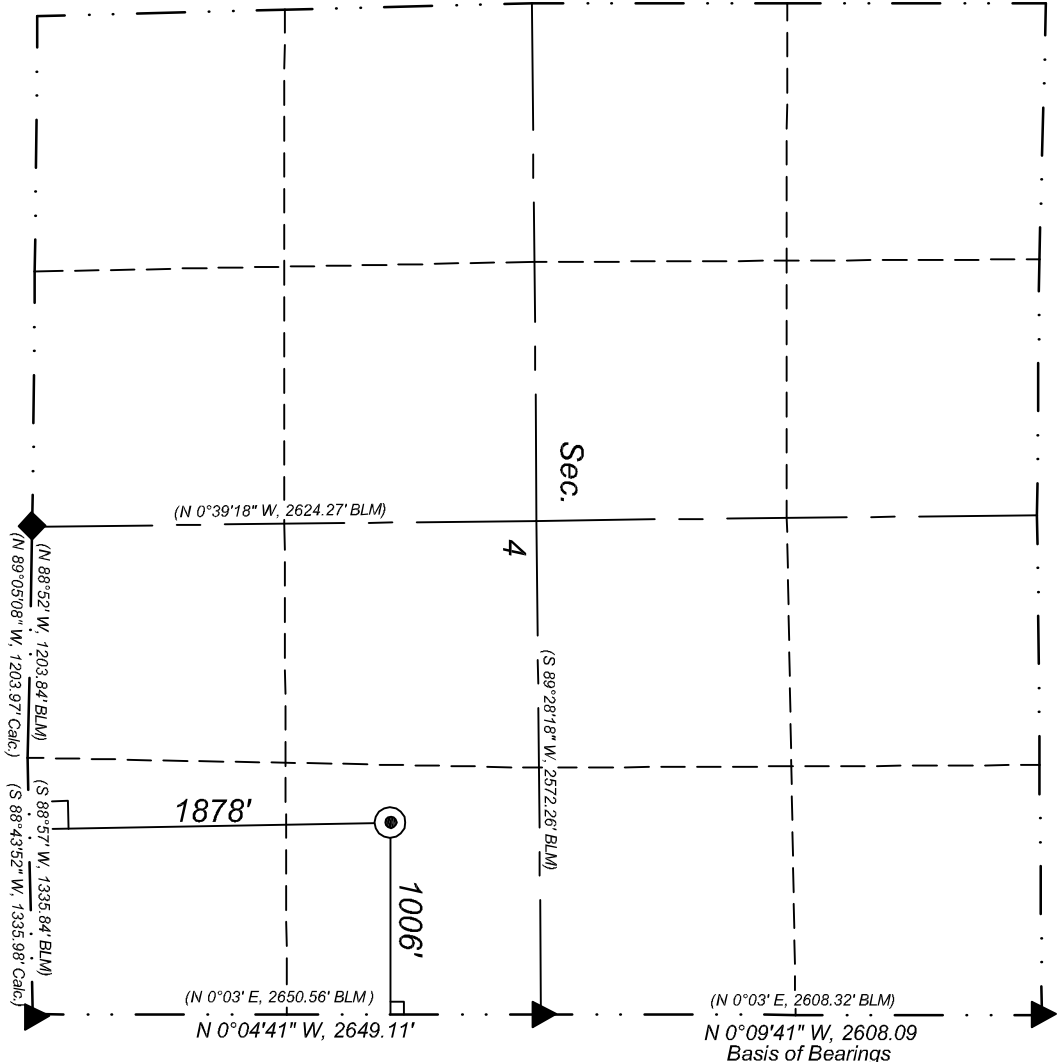
Richard B. Gabriel
Colorado PLS No. 37929



ENERGY SURVEYORS, INC.

P.O. BOX 991
FAIRMINGTON, NM 87499

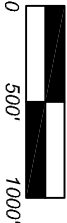
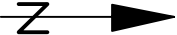
OFFICE: 505-325-4005
CELL: 505-360-8142



LEGEND

- Proposed Well
- Std. So. Ute 3 1/2" Al. Cap w/refs.
- Std. BLM 3 1/2" Al. Cap w/refs.
- Private Survey Cor. w/refs.
- 90° Symbol
- () Record or Calc. Bearing and Dist.

Note: GPS was not used in surveying this location.



Scale : 1"=1000'

Unless otherwise noted, bearings and distances are field measured.