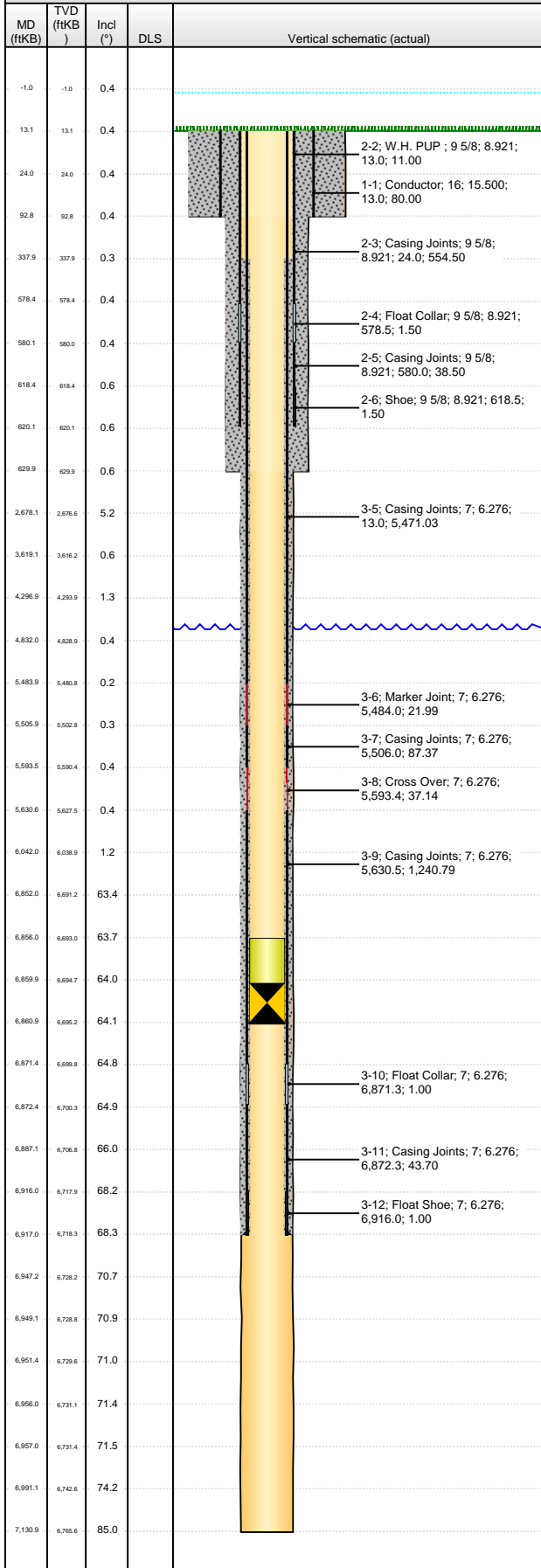


**Well Name: SAUER F33-77-1HN**

HORIZONTAL - ORIGINAL HOLE, 5/23/2013 5:12:35 PM



## Well Header

API 05-123-35634	Business Unit WATTENBERG	District 15	Well Config HORIZONTAL
Original KB Elevation (ft) 4,683.00	KB - GL / MSL (ftKB) 13.00	Spud Date 3/13/2013	P & A Date

## Comment

WELL WAS DRILLED & ABANDONED DUE TO HOLE PROBLEMS/COLLAPSE - SKID RIG 2 MONTHS LATER, DRILL NEW WELL SAUER F33-77-01HNX

## Directions To Well

WCR 50 & WCR 41, NORTH 1/10 MILE, EAST 1/10 MILE INTO LOCATION

## Congressional Location

Quarter 1	Quarter 2	Quarter 3	Quarter 4	Section	Township	Twnshp N...	Range	Rng E/W Dir
		SE	SW	33	5	N	65	W

## Bottom Hole Location

North-South Distance (ft) 535.0	From N or S Line FNL	East-West Distance (ft) 1,650.0	From E or W Line FWL
------------------------------------	-------------------------	------------------------------------	-------------------------

## Plug Back Total Depths

Date	Depth (ftKB)	Method	Com
3/21/2013	6,861.0	TALLY	CIBP

## Wellbore Sections

Section Des	Size (in)	Act Top (ftKB)	Act Btm (ftKB)
CONDUCTOR	26	13.0	93.0
SURFACE	13 3/4	93.0	630.0
INTERMEDIATE 1	8 3/4	630.0	7,131.0

## Zone Statuses

Zone Name	Status Date	Status	Job

## Casing Strings

### Conductor, 93.0ftKB

Casing Description	Run Date	OD (in)	Wt/Len (l...)	Grade	Top (ftKB)	MD (ftKB)
Conductor	2/21/2013	16	42.05	A-35	13.0	93.0

### Surface, 620.0ftKB

Casing Description	Run Date	OD (in)	Wt/Len (l...)	Grade	Top (ftKB)	MD (ftKB)
Surface	3/13/2013	9 5/8	36.00	J-55	13.0	620.0

### Intermediate, 6,917.0ftKB

Casing Description	Run Date	OD (in)	Wt/Len (l...)	Grade	Top (ftKB)	MD (ftKB)
Intermediate	3/18/2013	7	26.00	P-110	13.0	6,917.0

### Production, 10,976.0ftKB

Casing Description	Run Date	OD (in)	Wt/Len (l...)	Grade	Top (ftKB)	MD (ftKB)
Production						10,976.0

## Cement

Description	Top Depth (ftKB)	Bottom Depth (ftKB)
Conductor Cement	13.0	93.0
Surface Casing Cement	13.0	620.0
Intermediate Casing Cement	338.0	6,917.0

## Tubing Components

Item Des	OD (in)	Wt (lb/ft)	Grade	Jts	Len (ft)	Btm (ftKB)	Btm (TVD) (ftKB)

## Perforation Data

Zone	Bnch/St g	Entered Shot Total	Top (ftKB)	Btm (ftKB)	Date

## Other In Hole

Run Date	Des	OD (in)	Top (ftKB)	Btm (ftKB)
3/21/2013	Sand plug	5 7/8	6,856.0	6,860.0
3/21/2013	Retrievable Bridge Plug	5 7/8	6,860.0	6,861.0

## Logs

Date	Type	Top (ftKB)	Btm (ftKB)