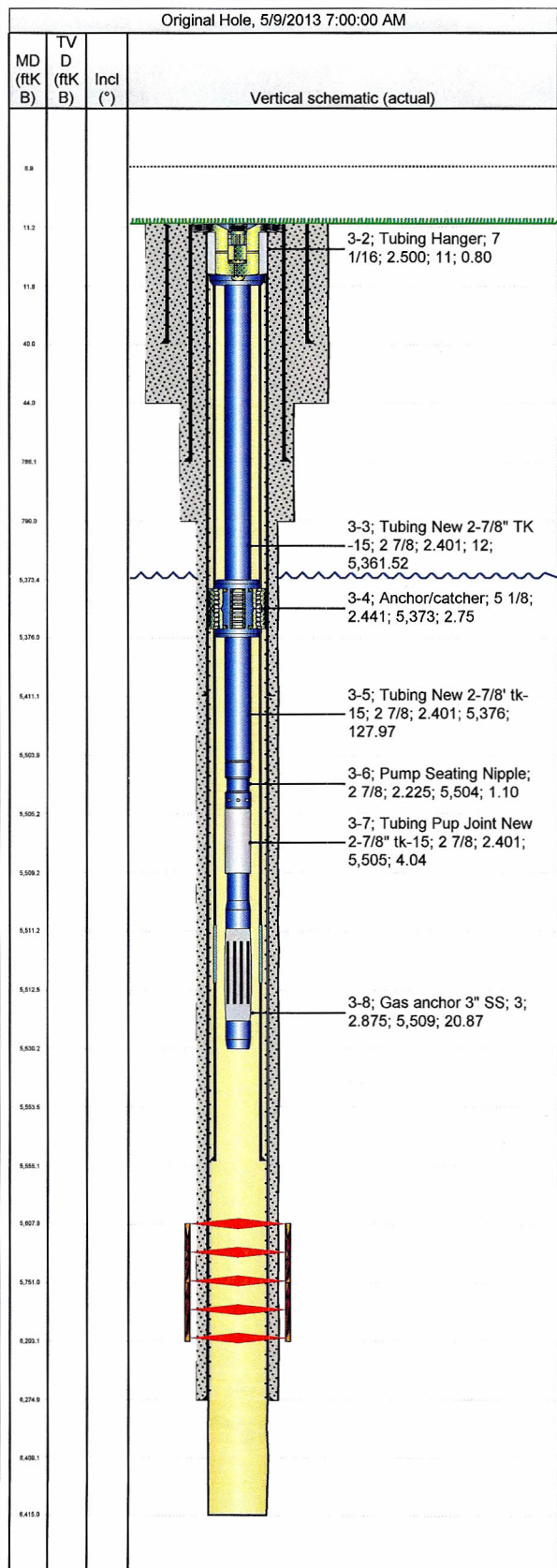




# Tubing Summary

Well Name Union Pacific 73X29	Lease Union Pacific	Field Name Rangely	Business Unit Mid-Continent/Alaska	
Ground Elevation (ft) 5,263.00	Original RKB Elevation (ft) 5,274.00	Current RKB Elevation 5,274.00, <elvdtmstart>	Mud Line Elevation (ft)	Water Depth (ft)
Current KB to Ground (ft) 11.00	Current KB to Mud Line (ft)	Current KB to Csg Flange (ft)	Current KB to Tubing Head (ft)	



Tubing Strings									
Tubing Description Tubing - Production		Planned Run? N		Set Depth (MD) (ftKB) 5,530.1			Set Depth (TVD) (ftKB)		
Run Date 5/9/2013		Run Job Casing Repair, 4/23/2013 13:00		Pull Date			Pull Job		
Jts	Item Des	OD (in)	ID (in)	Wt (lb/ft)	Grade	Top Thread	Len (ft)	Top (ftKB)	
	Tension 20,000#						2.00	9.0	
	Tubing Hanger	7 1/16	2.500				0.80	11.0	
167	Tubing New 2-7/8" TK-15	2 7/8	2.401	6.50	J-55		5,361.52	11.8	
	Anchor/catcher	5 1/8	2.441				2.75	5,373.3	
4	Tubing New 2-7/8' tk-15	2 7/8	2.401	6.50	J-55		127.97	5,376.1	
	Pump Seating Nipple	2 7/8	2.225				1.10	5,504.0	
	Tubing Pup Joint New 2-7/8" tk-15	2 7/8	2.401	6.50	J-55		4.04	5,505.1	
	Gas anchor 3" SS	3	2.875				20.87	5,509.2	
								5,530.1	