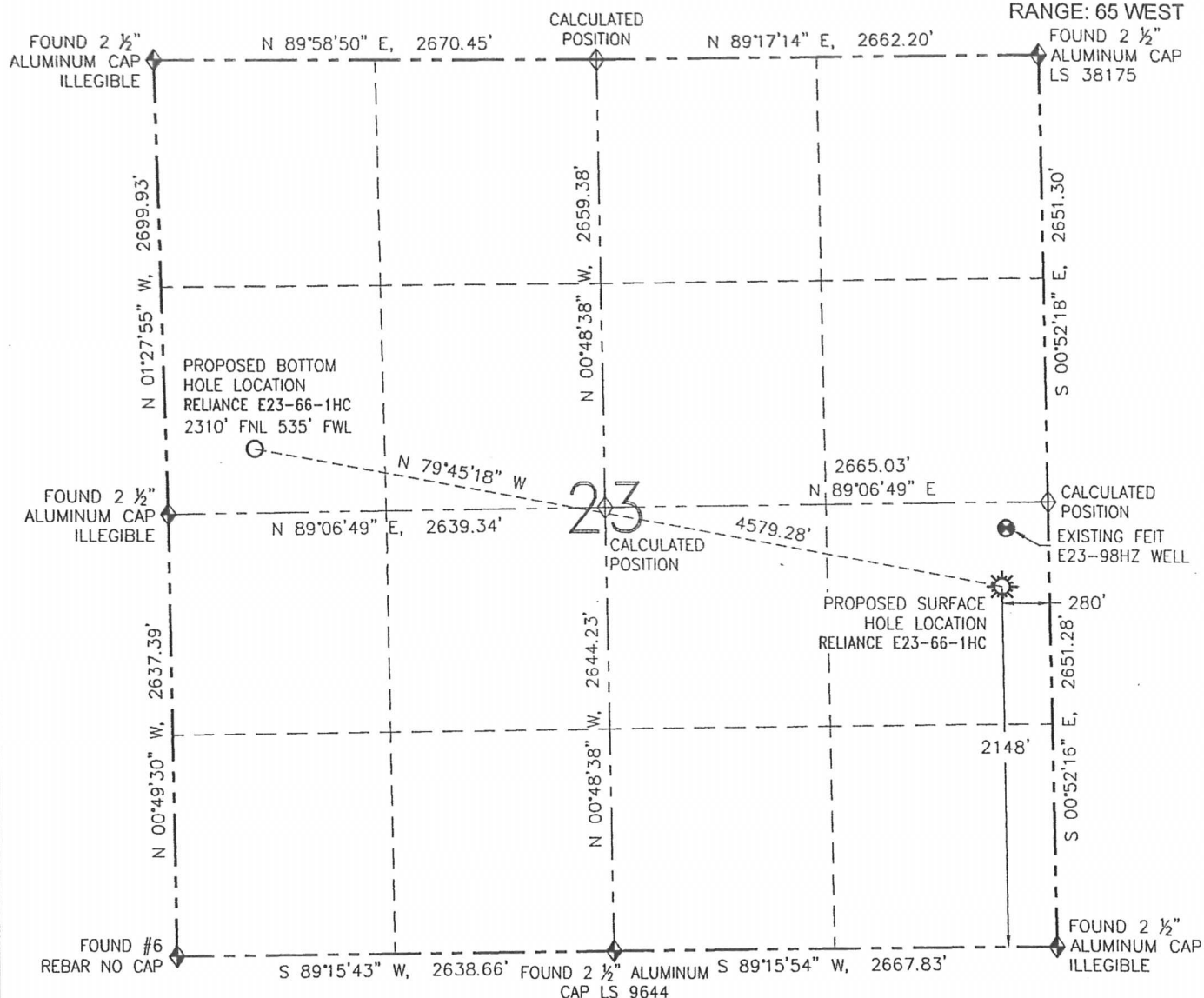


WELL LOCATION CERTIFICATE

RELIANCE E23-66-1HC

THIS MAP DOES NOT REPRESENT A BOUNDARY SURVEY

SECTION: 23
TOWNSHIP: 6 NORTH
RANGE: 65 WEST

SURFACE HOLE LOCATION (NAD 83)

LATITUDE: N 40.47010°

LONGITUDE: W 104.62185°

ELEVATION: 4695

PDOP: 1.6

1/4-1/4: NE SE

NEAREST PROPERTY LINE: 280' E

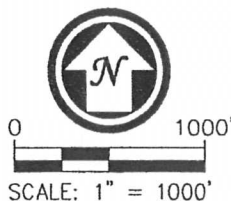
BOTTOM HOLE LOCATION

LATITUDE: N 40.47246°

LONGITUDE: W 104.63801°

IN ACCORDANCE WITH A REQUEST FROM GREG WILSON NOBLE ENERGY INC., R&R ENGINEERS-SURVEYORS, INC. HAS DETERMINED THE SURFACE HOLE LOCATION OF THE RELIANCE E23-66-1HC WELL TO BE 2148' FSL AND 280' FEL AS MEASURED AT (90) DEGREES FROM THE SECTION LINES OF SECTION 23, TOWNSHIP 6 NORTH, RANGE 65 WEST OF THE 6TH PRINCIPAL MERIDIAN, WELD COUNTY, COLORADO. THE BOTTOM HOLE LOCATION, AS PROVIDED BY THE CLIENT, IS TO BE 2310' FNL AND 535' FWL OF SECTION 23, TOWNSHIP 6 NORTH, RANGE 65 WEST.

I HEREBY CERTIFY THAT THIS WELL LOCATION CERTIFICATE WAS PREPARED BY ME, OR UNDER MY DIRECT SUPERVISION, THAT THE FIELD WORK WAS COMPLETED ON 03/12/13, FOR AND ON BEHALF OF NOBLE ENERGY INC., THAT IT IS NOT A LAND SURVEY PLAT OR AN IMPROVEMENT SURVEY PLAT, AND THAT IT IS NOT TO BE RELIED UPON FOR ESTABLISHMENT OF FENCES, BUILDINGS, OR OTHER FUTURE IMPROVEMENT LINES.



LEGEND

- PROPOSED WELL
- EXISTING WELL
- BOTTOM HOLE
- FOUND MONUMENT
- CALCULATED POSITION

NOTES:

1. BEARINGS ARE GRID BEARINGS OF THE COLORADO STATE PLANE COORDINATE SYSTEM, NORTH ZONE, NAD 83. THE LINEAL DIMENSIONS SHOWN HEREON ARE BASED UPON THE "U.S. SURVEY FOOT".
2. ELEVATIONS ARE BASED UPON NGS OPUS SOLUTION NAVD 88 DATUM COMPUTED USING GEOID09.
3. THE NEAREST EXISTING WELL IS: FEIT E23-98HZ 349' NE.
4. SEE LOCATION DRAWING FOR ALL IMPROVEMENTS WITHIN 400' OF THE OIL/GAS LOCATION.
5. SURFACE USE: CROPLAND.



FIELD DATE: 03/12/13

PLOT DATE: 04/23/13

DRAWN BY: CJD

JOB NO.: NE12383

SHEET NO.: 1 of 3

NOTICE:

ACCORDING TO COLORADO LAW, YOU MUST COMMENCE ANY LEGAL ACTION BASED UPON ANY DEFECT IN THIS W.L.C. WITHIN THREE YEARS AFTER YOU FIRST DISCOVER SUCH DEFECT. IN NO EVENT MAY ANY ACTION BASED UPON ANY DEFECT IN THIS W.L.C. BE COMMENCED MORE THAN TEN YEARS FROM THE DATE OF THE CERTIFICATION SHOWN HEREON (13-80-105 C.R.S.).



DAVID C. HOLMES, PLS 32828
FOR AND ON BEHALF OF R&R ENGINEERS-SURVEYORS, INC.

SITE SKETCH

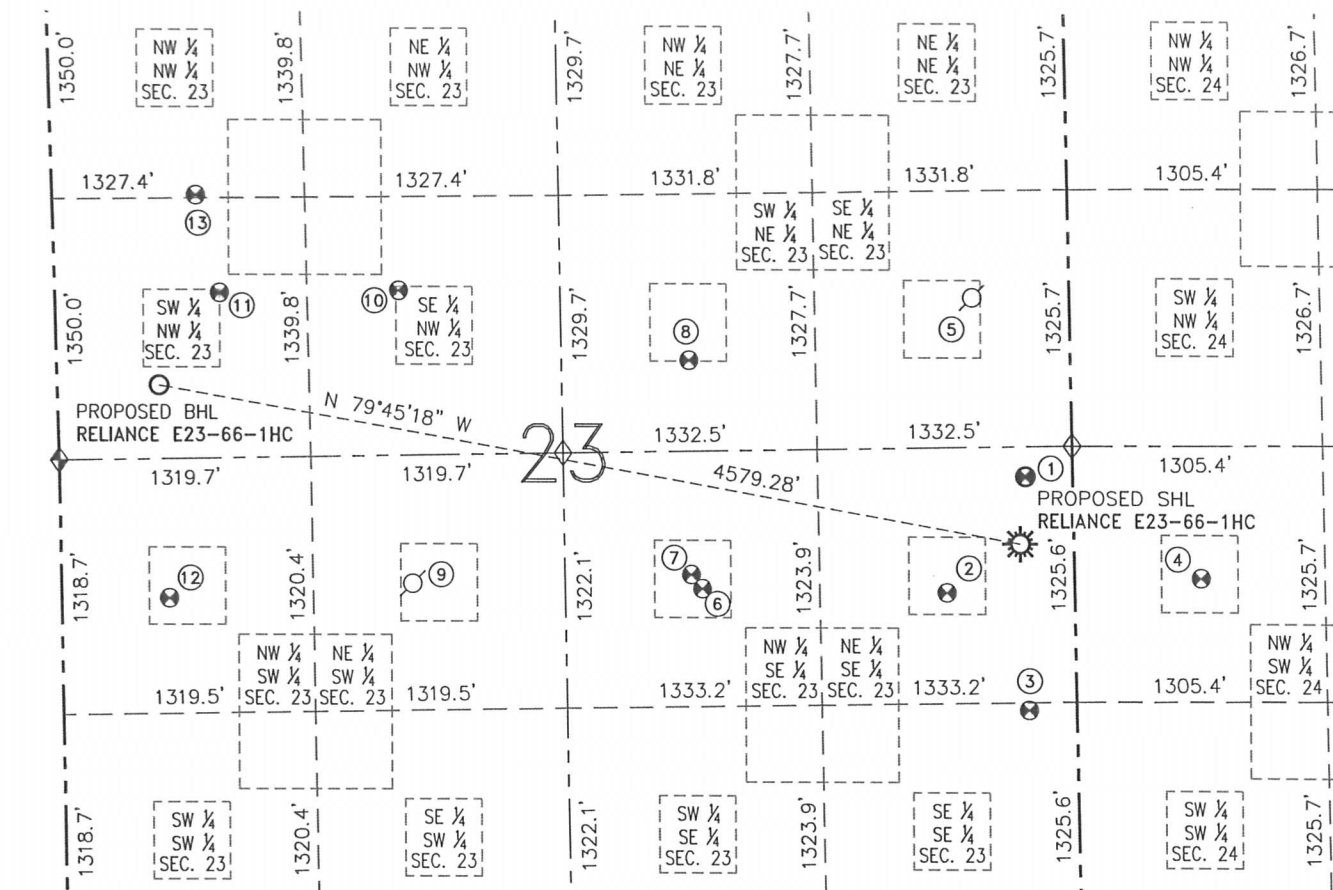
RELIANCE E23-66-1HC

THIS MAP DOES NOT REPRESENT A BOUNDARY SURVEY

SECTION: 23

TOWNSHIP: 6 NORTH

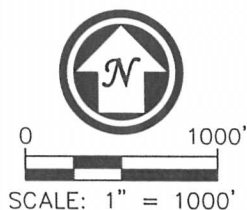
RANGE: 65 WEST



- ① FEIT E23-98HZ
NE/SE SEC. 23
2495' FSL
248' FEL
EL=4696
N 40.47106°
W 104.62174°
PDOP 2.6
- ② FEIT E23-09
NE/SE SEC. 23
1899' FSL
669' FEL
EL=4695
N 40.46942°
W 104.62325°
PDOP 2.0
- ③ FEIT E23-97HZ
SE/SE SEC. 23
1285' FSL
250' FEL
EL=4695
N 40.46774°
W 104.62173°
PDOP 4.6
- ④ ANDERSON E24-12
NW/SW SEC. 24
1965' FSL
660' FWL
EL=4692
N 40.46960°
W 104.61847°
PDOP 2.8
- ⑤ LI'L DARLIN'
NO. 8-23
SE/NE SEC. 23
PER COGCC:
1880' FNL
510' FEL
PLUGGED &
ABANDONED
- ⑥ FEIT E23-15D
NW/SE SEC. 23
1946' FSL
1962' FEL
EL=4699
N 40.46954°
W 104.62789°
PDOP 2.1
- ⑦ FEIT E23-10
NW/SE SEC. 23
1987' FSL
1988' FEL
EL=4699
N 40.46965°
W 104.62799°
PDOP 2.0
- ⑧ DINNER E23-7
SW/NE SEC. 23
2188' FNL
2000' FEL
EL=4700
N 40.47275°
W 104.62805°
PDOP 2.0
- ⑨ SITZMAN E23-11
NE/SW SEC. 23
PER COGCC:
1978' FSL
1840' FWL
PRODUCING (NO
VISIBLE WELLHEAD)
- ⑩ FEIT E23-6
SE/NW SEC. 23
1821' FNL
1803' FWL
EL=4708
N 40.47377°
W 104.63348°
PDOP 1.7
- ⑪ FEIT E23-5
SW/NW SEC. 23
1833' FNL
865' FWL
EL=4728
N 40.47376°
W 104.63685°
PDOP 1.8
- ⑫ SITZMAN E23-12
NW/SW SEC. 23
1918' FSL
565' FWL
EL=4719
N 40.46944°
W 104.63787°
PDOP 1.6
- ⑬ FEIT E23-99HZ
NW/NW SEC. 23
1327' FNL
754' FWL
EL=4732
N 40.47515°
W 104.63728°
PDOP 2.6



FIELD DATE: 03/12/13
PLOT DATE: 04/23/13
DRAWN BY: CJD
JOB NO.: NE12383
SHEET NO.: 2 of 3



NOTES:

- THIS SKETCH DOES NOT REPRESENT A BOUNDARY SURVEY.
- HORIZONTAL DATUM IS NAD 83.
- VERTICAL DATUM IS NAVD 88.

LEGEND

- PROPOSED WELL
- EXISTING WELL
- BOTTOM HOLE
- ABANDONED WELL
- FOUND MONUMENT
- CALCULATED POSITION