

Project: Wattenberg Field
Site: E (Sec.23-T06N-R65W) Weld County, CO
Well: Reliance E23-65-1HN
Wellbore: Original Drilling
Design: APD - Rev 0

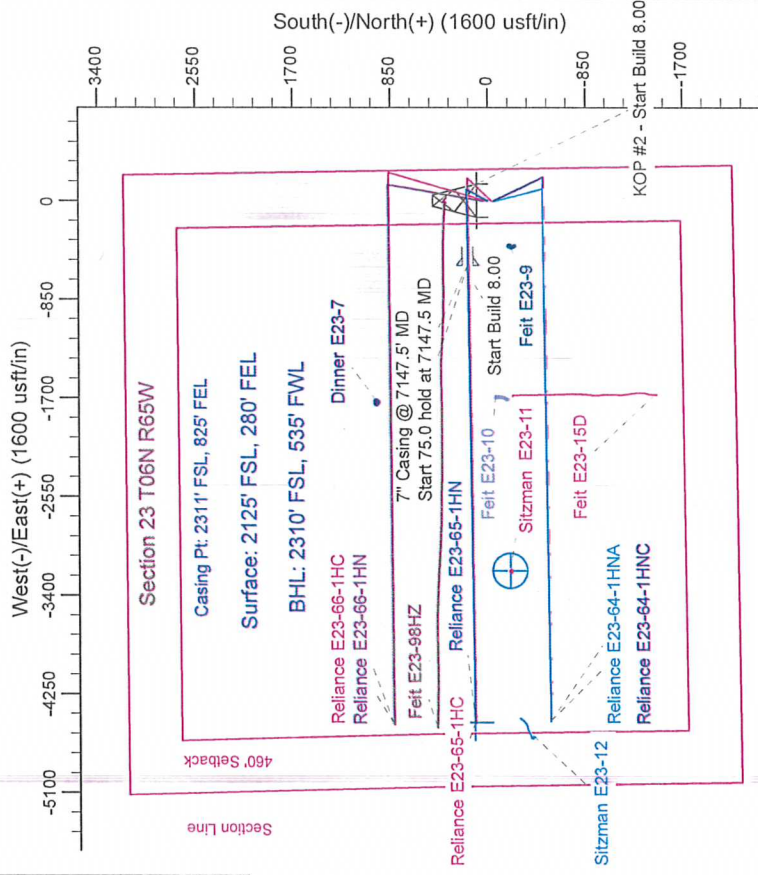
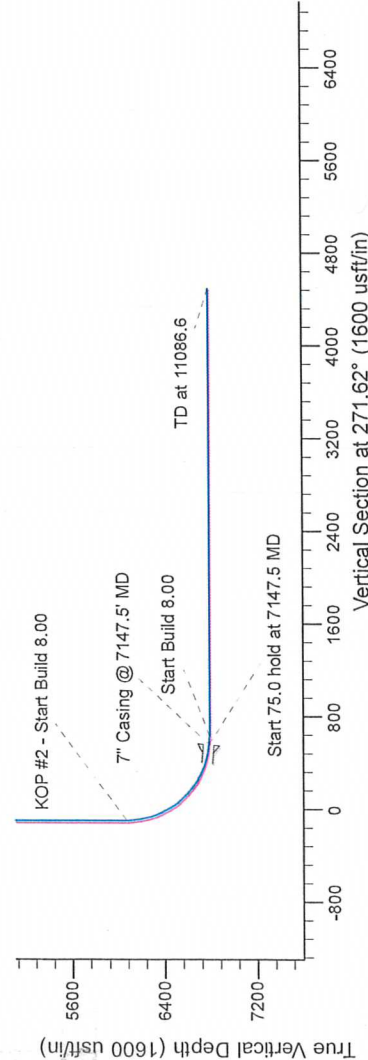
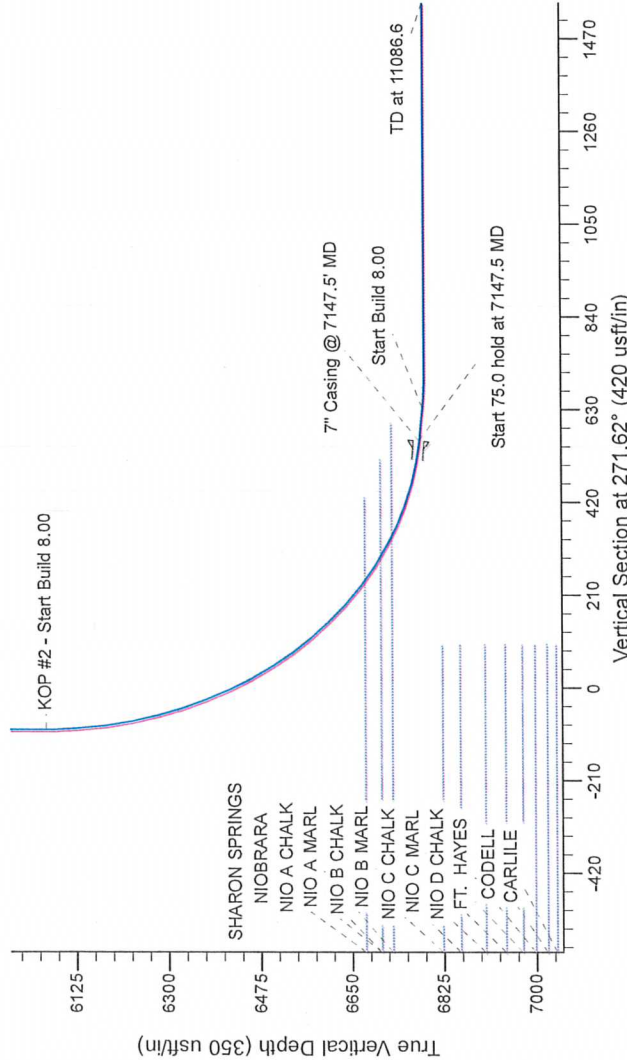
Northern Region Drilling

Geodetic System: US State Plane 1983
Datum: North American Datum 1983
Ellipsoid: GRS 1980
Zone: Colorado Northern Zone
System Datum: Mean Sea Level

SECTION DETAILS

Sec	MD	Inc	Azi	TVD	+N/S	+E/W	Dleg	TFace	VSecl	Target
1	0.0	0.00	0.00	0.0	0.0	0.0	0.00	0.00	0.0	
2	1500.0	0.00	0.00	1500.0	0.0	0.0	0.00	0.00	0.0	
3	2102.3	12.05	28.39	2097.9	55.5	30.0	2.00	28.39	-28.4	
4	2505.4	12.05	28.39	2492.1	129.5	70.0	0.00	0.00	-66.3	
5	3107.7	0.00	0.00	3090.0	185.0	100.0	2.00	180.00	-94.7	
6	6095.0	0.00	0.00	6067.3	185.0	100.0	0.00	0.00	-94.7	
7	7147.5	85.00	269.28	6780.7	176.8	-553.7	8.00	269.28	558.5	
8	7222.5	85.00	269.28	6787.3	175.8	-628.4	0.00	0.00	633.2	
9	7285.0	90.00	269.28	6790.0	175.0	-690.8	8.00	0.00	695.5	
10	11086.6	90.00	269.28	6790.0	127.2	-4492.1	0.00	0.00	4493.9	

Reliance E23-65-1HN BHL 2310FSL, 535FWL



T G M
Azimuths to Grid North
True North: -0.57°
Magnetic North: 7.92°
Magnetic Field
Strength: 53008.4snT
Dip Angle: 67.07°
Date: 5/14/2013
Model: IGRF200510

WELL DETAILS: Reliance E23-65-1HN

North	East	Ground Level	Longitude
0.0	1415285.69	4695.0	-104.621850
0.0	3244317.19	40.470040	

Plan: APD - Rev 0 (Reliance E23-65-1HN/Original Drilling)

Created By: Shalley Jewell	Date: 14:58, May 14 2013
Checked:	Date:
Reviewed:	Date:
Approved:	Date: