

Project: Wattenberg Field  
Site: E (Sec. 23-T06N-R65W) Weld County, CO  
Well: Reliance E23-64-1HNC  
Wellbore: Original Drilling  
Design: APD - Rev 0

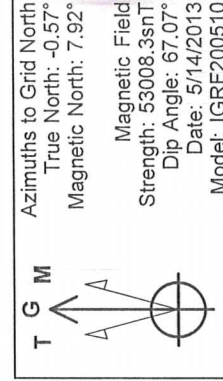
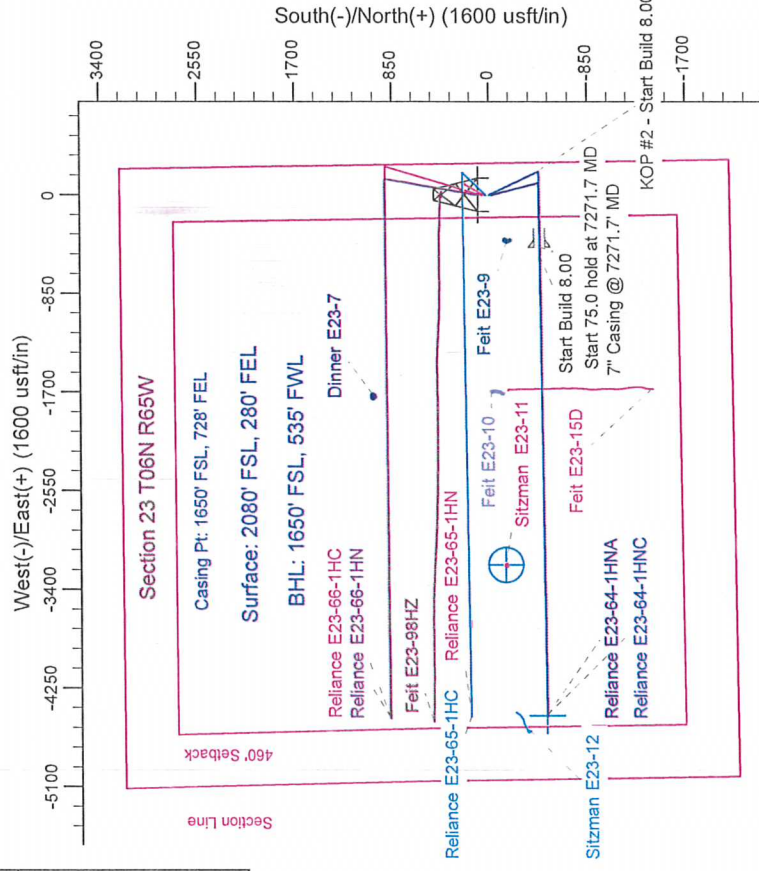
# Northern Region Drilling

Geodetic System: US State Plane 1983  
Datum: North American Datum 1983  
Ellipsoid: GRS 1980  
Zone: Colorado Northern Zone  
System Datum: Mean Sea Level

## SECTION DETAILS

Sec	MD	Inc	Azi	TVD	+N/S	+E/W	Dleg	TFace	VSecl	Target
1	0.0	0.00	0.00	0.0	0.0	0.0	0.00	0.00	0.00	0.0
2	1500.0	0.00	0.00	1500.0	0.0	0.0	0.00	0.00	0.00	0.0
3	2200.3	14.06	154.51	2192.9	-77.3	36.9	2.00	154.51	-28.3	-28.3
4	4169.8	0.00	0.00	4169.8	-352.7	168.1	0.00	0.00	-129.0	-129.0
5	6209.2	0.00	0.00	6209.2	-430.0	205.0	0.00	180.00	-157.2	-157.2
6	7271.7	85.00	269.29	6871.1	-438.2	-448.7	8.00	269.29	493.5	493.5
7	7346.7	85.00	269.29	6877.6	-439.1	-523.4	8.00	0.00	567.9	567.9
8	7403.0	89.50	269.29	6880.3	-439.8	-579.6	8.00	0.00	623.8	623.8
10	11307.2	89.50	269.29	6914.4	-488.5	-4483.4	0.00	0.00	4509.9	4509.9

Reliance E23-64-1HNC BHL 1650'FSL, 535'FWL



WELL DETAILS: Reliance E23-64-1HNC

Ground Level: 4695.0	Longitude
0.0	0.0
1415241.98	3244317.63
40.469920	-104.621850

Plan: APD - Rev 0 (Reliance E23-64-1HNC/Original Drilling)

Created By: Shailey Jewell	Date: 14:35, May 14 2013
Checked:	Date:
Reviewed:	Date:
Approved:	Date:

