

1625 Broadway
Suite 2000
Denver, CO 80202

Tel: 303.228.4000
Fax: 303.228.4280
www.nobleenergyinc.com



May 22, 2013

Colorado Oil and Gas Conservation Commission
The Chancery Building
1120 Lincoln Street, Suite 801
Denver, CO 80203
Attn: Mr. Matt Lepore, Director

RE: RELIANCE E23-66-1HN
Niobrara New Drill
Township 6 North, Range 65 West, 6th P.M.
Section 23: NE/4SE/4: 2170' FSL & 280' FEL (Surface Location)
Section 23: SE/4NE/4: 2308' FNL & 773' FEL (Beginning of Lateral)
Section 23: SW/4NW/4: 2310' FNL & 535' FWL (Bottom Hole Location)
Weld County, Colorado

Dear Director:

Noble Energy, Inc. ("NEI") is planning to drill the captioned boundary well in accordance with the provisions of COGCC Rule 318A.e.

NEI's proposed wellbore spacing unit consists of the N/2S/2, S/2N/2 of Section 23, T6N, R65W, creating a 324-acre wellbore spacing unit for the Niobrara formation. NEI is the only owner within the proposed wellbore spacing unit, therefore NEI hereby attests that no notice letters are required under COGCC Rule 318A(l).e.(6).

Enclosed are copies of the following documents to assist you in your review and approval of NEI's proposed APD for the captioned well:

- Map & plat illustrating proposed wellbore spacing unit.

Thank you for your attention to the enclosed. NEI respectfully requests that the COGCC review the enclosed information and approve the Application for Permit to Drill the captioned well.

Sincerely,

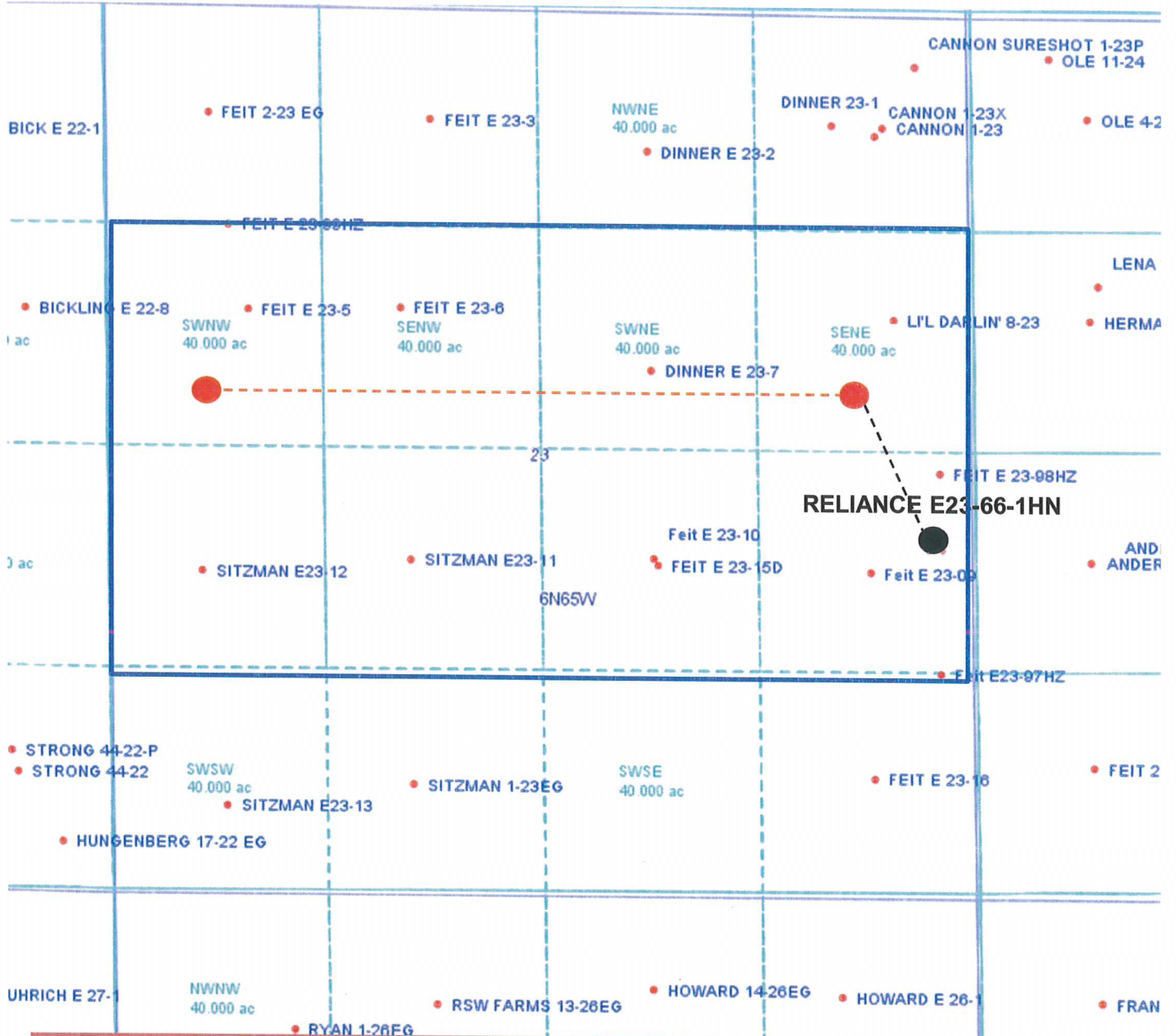
A handwritten signature in blue ink that reads 'Mari Clark'.

Mari Clark
Regulatory Analyst II
Noble Energy Inc.

Reliance E23-66-1HN

Proposed Spacing Unit – Noble Energy, Inc

N/2S/2, S/2N/2 Section 23 Township 6 North, Range 65 West



Legend



Proposed 323.63± acre spacing unit



Bottom Hole Location

WELL LOCATION CERTIFICATE

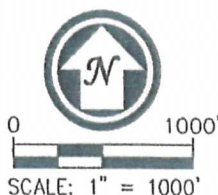
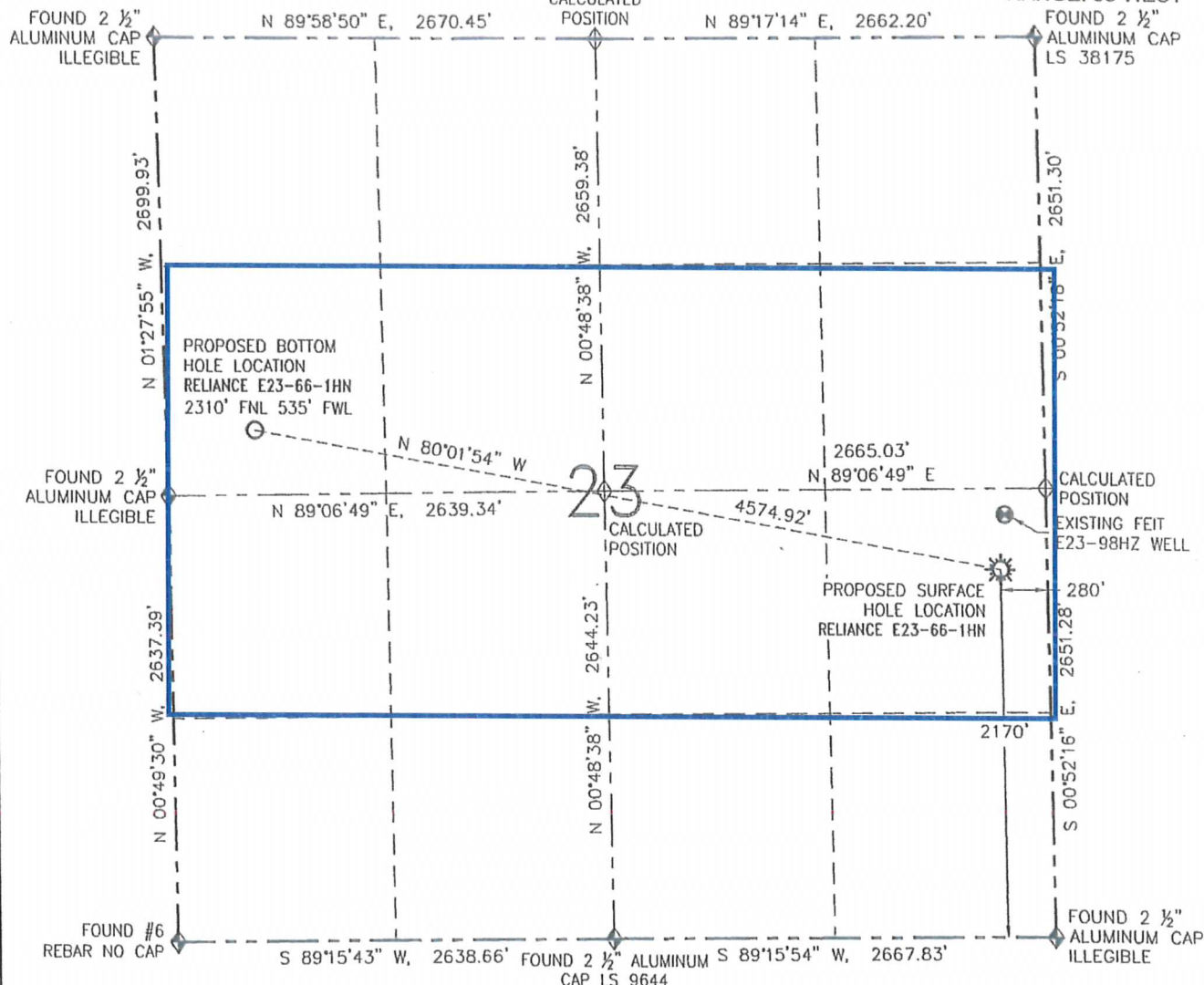
RELiance E23-66-1HN

THIS MAP DOES NOT REPRESENT A BOUNDARY SURVEY

SECTION: 23

TOWNSHIP: 6 NORTH

RANGE: 65 WEST



SURFACE HOLE LOCATION (NAD 83)

LATITUDE: N 40.47017°
 LONGITUDE: W 104.62185°
 ELEVATION: 4695
 PDOP: 1.6
 ¼-¼: NE SE
 NEAREST PROPERTY LINE: 280' E

BOTTOM HOLE LOCATION

LATITUDE: N 40.47246°
 LONGITUDE: W 104.63801°

IN ACCORDANCE WITH A REQUEST FROM GREG WILSON NOBLE ENERGY INC., R&R ENGINEERS-SURVEYORS, INC. HAS DETERMINED THE SURFACE HOLE LOCATION OF THE RELIANCE E23-66-1HN WELL TO BE 2170' FSL AND 280' FEL AS MEASURED AT (90) DEGREES FROM THE SECTION LINES OF SECTION 23, TOWNSHIP 6 NORTH, RANGE 65 WEST OF THE 6TH PRINCIPAL MERIDIAN, WELD COUNTY, COLORADO. THE BOTTOM HOLE LOCATION, AS PROVIDED BY THE CLIENT, IS TO BE 2310' FNL AND 535' FWL OF SECTION 23, TOWNSHIP 6 NORTH, RANGE 65 WEST.

I HEREBY CERTIFY THAT THIS WELL LOCATION CERTIFICATE WAS PREPARED BY ME, OR UNDER MY DIRECT SUPERVISION, THAT THE FIELD WORK WAS COMPLETED ON 03/12/13, FOR AND ON BEHALF OF NOBLE ENERGY INC., THAT IT IS NOT A LAND SURVEY PLAT OR AN IMPROVEMENT SURVEY PLAT, AND THAT IT IS NOT TO BE RELIED UPON FOR ESTABLISHMENT OF FENCES, BUILDINGS, OR OTHER FUTURE IMPROVEMENT LINES.

LEGEND

- ☼ PROPOSED WELL
- ⊙ EXISTING WELL
- BOTTOM HOLE
- ⬢ FOUND MONUMENT
- ⬢ CALCULATED POSITION

NOTES:

1. BEARINGS ARE GRID BEARINGS OF THE COLORADO STATE PLANE COORDINATE SYSTEM, NORTH ZONE, NAD 83. THE LINEAL DIMENSIONS SHOWN HEREON ARE BASED UPON THE "U.S. SURVEY FOOT".
2. ELEVATIONS ARE BASED UPON NGS OPUS SOLUTION NAVD 88 DATUM COMPUTED USING GEOID09.
3. THE NEAREST EXISTING WELL IS: FEIT E23-98HZ 327' NE.
4. SEE LOCATION DRAWING FOR ALL IMPROVEMENTS WITHIN 400' OF THE OIL/GAS LOCATION.
5. SURFACE USE: CROPLAND.



FIELD DATE: 03/12/13

PLOT DATE: 04/23/13

DRAWN BY: CJD

JOB NO.: NE12383

SHEET NO.: 1 of 16

NOTICE:

ACCORDING TO COLORADO LAW, YOU MUST COMMENCE ANY LEGAL ACTION BASED UPON ANY DEFECT IN THIS W.L.C. WITHIN THREE YEARS AFTER YOU FIRST DISCOVER SUCH DEFECT. IN NO EVENT MAY ANY ACTION BASED UPON ANY DEFECT IN THIS W.L.C. BE COMMENCED MORE THAN TEN YEARS FROM THE DATE OF THE CERTIFICATION SHOWN HEREON (13-80-105 C.R.S.).



DAVID C. HOLMES, PLS 32828
 FOR AND ON BEHALF OF R&R ENGINEERS-SURVEYORS, INC.