

## WELL LOCATION CERTIFICATE

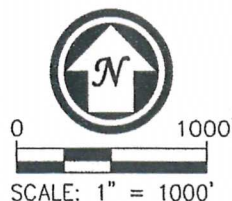
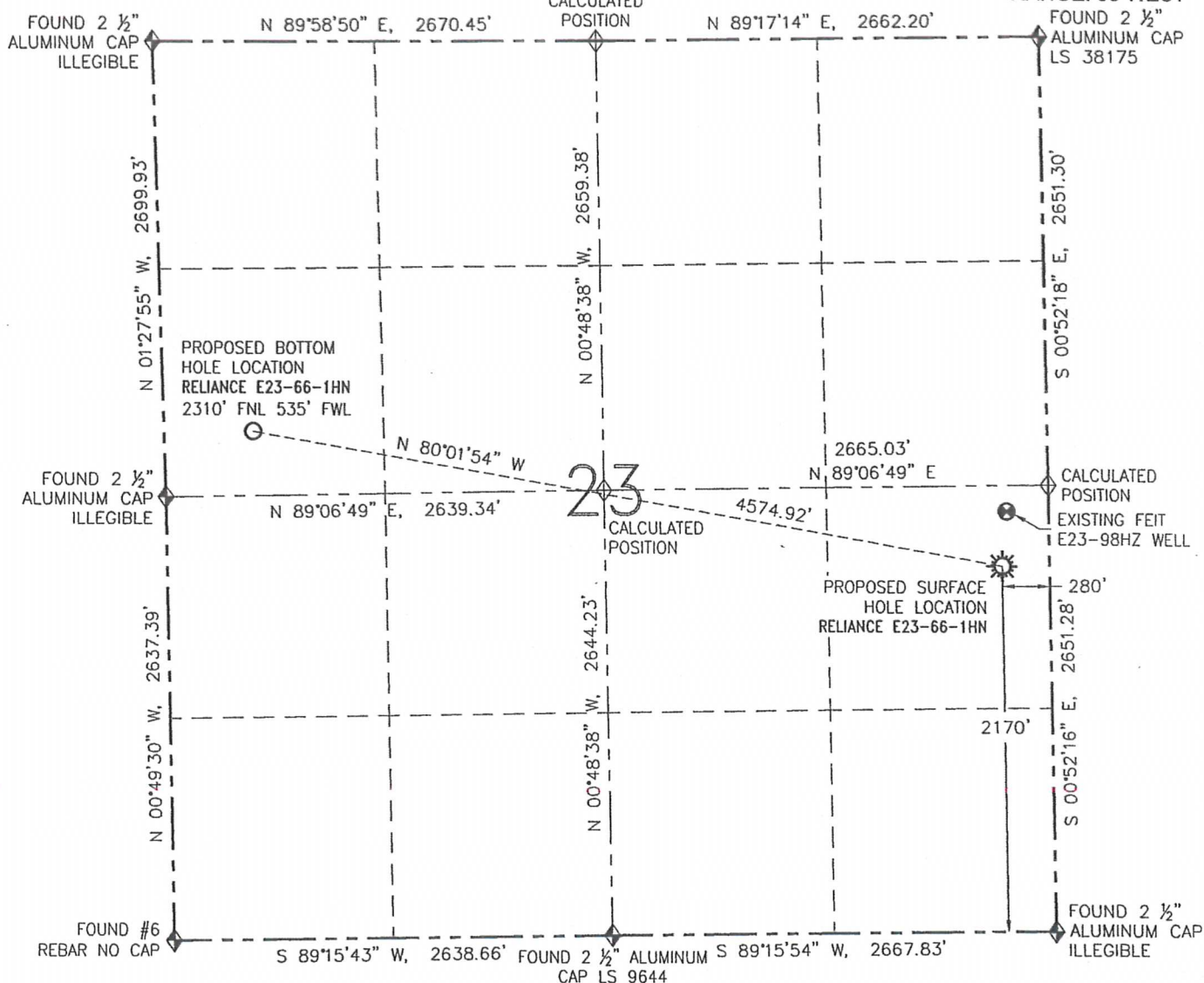
RELIANCE E23-66-1HN

THIS MAP DOES NOT REPRESENT A BOUNDARY SURVEY

SECTION: 23

TOWNSHIP: 6 NORTH

RANGE: 65 WEST



## SURFACE HOLE LOCATION (NAD 83)

LATITUDE: N 40.47017°  
 LONGITUDE: W 104.62185°  
 ELEVATION: 4695  
 PDOP: 1.6  
 1/4-1/4: NE SE  
 NEAREST PROPERTY LINE: 280' E

## BOTTOM HOLE LOCATION

LATITUDE: N 40.47246°  
 LONGITUDE: W 104.63801°

IN ACCORDANCE WITH A REQUEST FROM GREG WILSON NOBLE ENERGY INC., R&R ENGINEERS-SURVEYORS, INC. HAS DETERMINED THE SURFACE HOLE LOCATION OF THE RELIANCE E23-66-1HN WELL TO BE 2170' FSL AND 280' FEL AS MEASURED AT (90) DEGREES FROM THE SECTION LINES OF SECTION 23, TOWNSHIP 6 NORTH, RANGE 65 WEST OF THE 6TH PRINCIPAL MERIDIAN, WELD COUNTY, COLORADO. THE BOTTOM HOLE LOCATION, AS PROVIDED BY THE CLIENT, IS TO BE 2310' FNL AND 535' FWL OF SECTION 23, TOWNSHIP 6 NORTH, RANGE 65 WEST.

I HEREBY CERTIFY THAT THIS WELL LOCATION CERTIFICATE WAS PREPARED BY ME, OR UNDER MY DIRECT SUPERVISION, THAT THE FIELD WORK WAS COMPLETED ON 03/12/13, FOR AND ON BEHALF OF NOBLE ENERGY INC., THAT IT IS NOT A LAND SURVEY PLAT OR AN IMPROVEMENT SURVEY PLAT, AND THAT IT IS NOT TO BE RELIED UPON FOR ESTABLISHMENT OF FENCES, BUILDINGS, OR OTHER FUTURE IMPROVEMENT LINES.

## LEGEND

- PROPOSED WELL
- EXISTING WELL
- BOTTOM HOLE
- FOUND MONUMENT
- CALCULATED POSITION

## NOTES:

1. BEARINGS ARE GRID BEARINGS OF THE COLORADO STATE PLANE COORDINATE SYSTEM, NORTH ZONE, NAD 83. THE LINEAL DIMENSIONS SHOWN HEREON ARE BASED UPON THE "U.S. SURVEY FOOT".
2. ELEVATIONS ARE BASED UPON NGS OPUS SOLUTION NAVD 88 DATUM COMPUTED USING GEOID09.
3. THE NEAREST EXISTING WELL IS: FEIT E23-98HZ 327' NE.
4. SEE LOCATION DRAWING FOR ALL IMPROVEMENTS WITHIN 400' OF THE OIL/GAS LOCATION.
5. SURFACE USE: CROPLAND.



FIELD DATE: 03/12/13

PLOT DATE: 04/23/13

DRAWN BY: CJD

JOB NO.: NE12383

SHEET NO.: 1 of 16

## NOTICE:

ACCORDING TO COLORADO LAW, YOU MUST COMMENCE ANY LEGAL ACTION BASED UPON ANY DEFECT IN THIS W.L.C. WITHIN THREE YEARS AFTER YOU FIRST DISCOVER SUCH DEFECT. IN NO EVENT MAY ANY ACTION BASED UPON ANY DEFECT IN THIS W.L.C. BE COMMENCED MORE THAN TEN YEARS FROM THE DATE OF THE CERTIFICATION SHOWN HEREON (13-80-105 C.R.S.).



DAVID C. HOLMES, PLS 32828  
 FOR AND ON BEHALF OF R&R ENGINEERS-SURVEYORS, INC.

## SITE SKETCH

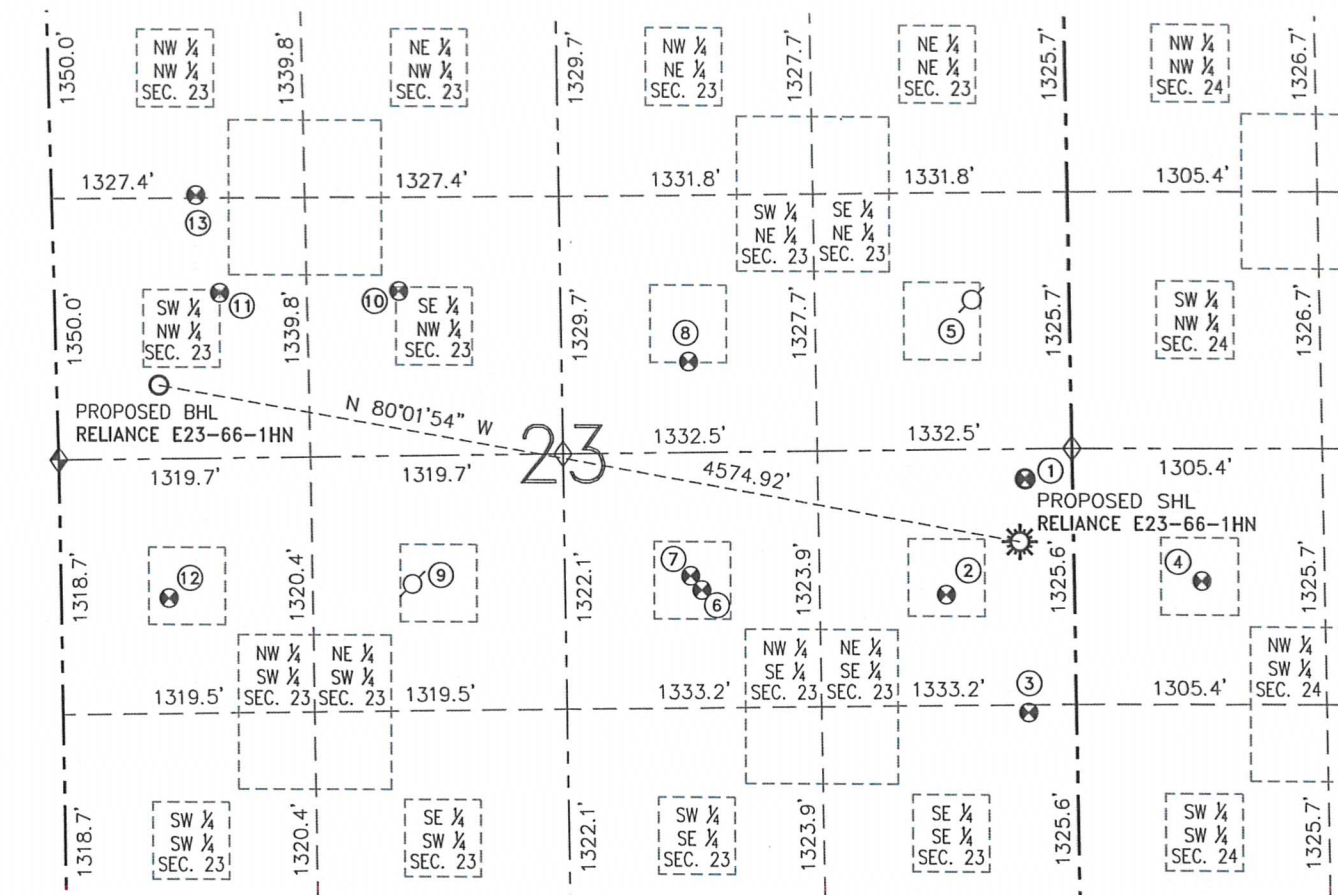
RELIANCE E23-66-1HN

THIS MAP DOES NOT REPRESENT A BOUNDARY SURVEY

SECTION: 23

TOWNSHIP: 6 NORTH

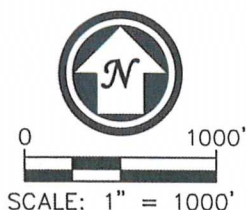
RANGE: 65 WEST



- ① FEIT E23-98HZ  
NE/SE SEC. 23  
2495' FSL  
248' FEL  
EL=4696  
N 40.47106°  
W 104.62174°  
PDOP 2.6
- ② FEIT E23-09  
NE/SE SEC. 23  
1899' FSL  
669' FEL  
EL=4695  
N 40.46942°  
W 104.62325°  
PDOP 2.0
- ③ FEIT E23-97HZ  
SE/SE SEC. 23  
1285' FSL  
250' FEL  
EL=4695  
N 40.46774°  
W 104.62173°  
PDOP 4.6
- ④ ANDERSON E24-12  
NW/SW SEC. 24  
1965' FSL  
660' FWL  
EL=4692  
N 40.46960°  
W 104.61847°  
PDOP 2.8
- ⑤ LI'L DARLIN'  
NO. 8-23  
SE/NE SEC. 23  
PER COGCC:  
1880' FNL  
510' FEL  
PLUGGED &  
ABANDONED
- ⑥ FEIT E23-15D  
NW/SE SEC. 23  
1946' FSL  
1962' FEL  
EL=4699  
N 40.46954°  
W 104.62789°  
PDOP 2.1
- ⑦ FEIT E23-10  
NW/SE SEC. 23  
1987' FSL  
1988' FEL  
EL=4699  
N 40.46965°  
W 104.62799°  
PDOP 2.0
- ⑧ DINNER E23-7  
SW/NE SEC. 23  
2188' FNL  
2000' FEL  
EL=4700  
N 40.47275°  
W 104.62805°  
PDOP 2.0
- ⑨ SITZMAN E23-11  
NE/SW SEC. 23  
PER COGCC:  
1978' FSL  
1840' FWL  
PRODUCING (NO  
VISIBLE WELLHEAD)
- ⑩ FEIT E23-6  
SE/NW SEC. 23  
1821' FNL  
1803' FWL  
EL=4708  
N 40.47377°  
W 104.63348°  
PDOP 1.7
- ⑪ FEIT E23-5  
SW/NW SEC. 23  
1833' FNL  
865' FWL  
EL=4728  
N 40.47376°  
W 104.63685°  
PDOP 1.8
- ⑫ SITZMAN E23-12  
NW/SW SEC. 23  
1918' FSL  
565' FWL  
EL=4719  
N 40.46944°  
W 104.63787°  
PDOP 1.6
- ⑬ FEIT E23-99HZ  
NW/NW SEC. 23  
1327' FNL  
754' FWL  
EL=4732  
N 40.47515°  
W 104.63728°  
PDOP 2.6



FIELD DATE: 03/12/13  
PLOT DATE: 04/23/13  
DRAWN BY: CJD  
JOB NO.: NE12383  
SHEET NO.: 2 of 16



## NOTES:

- THIS SKETCH DOES NOT REPRESENT A BOUNDARY SURVEY.
- HORIZONTAL DATUM IS NAD 83.
- VERTICAL DATUM IS NAVD 88.

## LEGEND

- PROPOSED WELL
- EXISTING WELL
- BOTTOM HOLE
- ABANDONED WELL
- FOUND MONUMENT
- CALCULATED POSITION