

The Road to Excellence Starts with Safety

Sold To #: 300721	Ship To #: 2975551	Quote #:	Sales Order #: 900150803
Customer: WPX ENERGY ROCKY MOUNTAIN LLC-EBUS	Customer Rep: Hartl, Al		
Well Name: RWF	Well #: 423-36	API/UWI #: 05-045-21481	
Field: RULISON	City (SAP): RIFLE	County/Parish: Garfield	State: Colorado
Lat: N 39.482 deg. OR N 39 deg. 28 min. 56.453 secs.	Long: W 107.837 deg. OR W -108 deg. 9 min. 48.204 secs.		
Contractor: NABORS 576	Rig/Platform Name/Num: NABORS 576		
Job Purpose: Cement Surface Casing			
Well Type: Development Well	Job Type: Cement Surface Casing		
Sales Person: MAYO, MARK	Srv Supervisor: CASTILLO, FRANCISCO	MBU ID Emp #: 513620	

Job Personnel

HES Emp Name	Exp Hrs	Emp #	HES Emp Name	Exp Hrs	Emp #	HES Emp Name	Exp Hrs	Emp #
BLUST, CHARLES Thomas	6.5	386662	BROWN, TRAVIS A	6.5	396848			
CASTILLO, FRANCISCO P	6.5	513620						

Equipment

HES Unit #	Distance-1 way	HES Unit #	Distance-1 way	HES Unit #	Distance-1 way	HES Unit #	Distance-1 way
10872429	60 mile	10951251	60 mile	11021972	60 mile	11027039	60 mile
11808847	60 mile						

Job Hours

Date	On Location Hours	Operating Hours	Date	On Location Hours	Operating Hours	Date	On Location Hours	Operating Hours
2/17/2013	6.5	1						
TOTAL			Total is the sum of each column separately					

Job				Job Times			
Formation Name				Date	Time	Time Zone	
Formation Depth (MD)	Top	SURFACE	Bottom	1145	Called Out	17 - Feb - 2013	10:15 MST
Form Type		BHST		On Location	17 - Feb - 2013	14:00	MST
Job depth MD	1145. ft	Job Depth TVD	1145. ft	Job Started	17 - Feb - 2013	18:18	MST
Water Depth		Wk Ht Above Floor	3. ft	Job Completed	17 - Feb - 2013	19:14	MST
Perforation Depth (MD)	From	To		Departed Loc	17 - Feb - 2013	20:30	MST

Well Data

Description	New / Used	Max pressure psig	Size in	ID in	Weight lbm/ft	Thread	Grade	Top MD ft	Bottom MD ft	Top TVD ft	Bottom TVD ft
-------------	------------	-------------------	---------	-------	---------------	--------	-------	-----------	--------------	------------	---------------

Sales/Rental/3rd Party (HES)

Description	Qty	Qty uom	Depth	Supplier
R/A DENSOMETER W/CHART RECORDER,/JOB,ZI	1	JOB		
PORT. DATA ACQUIS. W/OPTICEM RT W/HES	1	EA		
PLUG,CMTG, TOP, 9 5/8, HWE, 8.16 MIN/9.06 MA	1	EA		

Tools and Accessories

Type	Size	Qty	Make	Depth	Type	Size	Qty	Make	Depth	Type	Size	Qty	Make
Guide Shoe	9.625	1	WTF	1124.81	Packer					Top Plug	9.625	1	HES
Float Shoe					Bridge Plug					Bottom Plug			
Float Collar	9.625	1	WTF	1080.75	Retainer					SSR plug set			
Insert Float										Plug Container	9.625	1	HES
Stage Tool										Centralizers	9.625	9	WTF

Miscellaneous Materials

Gelling Agt	Conc	Surfactant	Conc	Acid Type	Qty	Conc	%
Treatment Fld	Conc	Inhibitor	Conc	Sand Type	Size	Qty	

Fluid Data

Stage/Plug #: 1

HALLIBURTON**Cementing Job Summary**

Fluid #	Stage Type	Fluid Name	Qty	Qty uom	Mixing Density lbm/gal	Yield ft ³ /sk	Mix Fluid Gal/sk	Rate bbl/min	Total Mix Fluid Gal/sk
1	Water Spacer		20.00	bbl	.	.0	.0	4	
2	Lead Cement	VERSACEM (TM) SYSTEM (452010)	160.0	sacks	12.3	2.38	13.75	8	13.75
	13.75 Gal	FRESH WATER							
3	Tail Cement	VERSACEM (TM) SYSTEM (452010)	160.0	sacks	12.8	2.11	11.75	8	11.75
4	Displacement		85.00	bbl	.	.0	.0	10	
Calculated Values		Pressures		Volumes					
Displacement	85	Shut In: Instant		Lost Returns	NONE	Cement Slurry	128	Pad	
Top Of Cement	SURFACE	5 Min		Cement Returns	30	Actual Displacement	85	Treatment	
Frac Gradient		15 Min		Spacers	20	Load and Breakdown		Total Job	233
Rates									
Circulating	RIG	Mixing	8	Displacement	10	Avg. Job	7.5		
Cement Left In Pipe	Amount	44.06 ft	Reason	Shoe Joint					
Frac Ring # 1 @	ID	Frac ring # 2 @	ID	Frac Ring # 3 @	ID	Frac Ring # 4 @	ID		
The Information Stated Herein Is Correct				Customer Representative Signature					

The Road to Excellence Starts with Safety

Sold To #: 300721	Ship To #: 2975551	Quote #:	Sales Order #: 900150803
Customer: WPX ENERGY ROCKY MOUNTAIN LLC-EBUS		Customer Rep: Hartl, Al	
Well Name: RWF	Well #: 423-36	API/UWI #: 05-045-21481	
Field: RULISON	City (SAP): RIFLE	County/Parish: Garfield	State: Colorado
Legal Description:			
Lat: N 39.482 deg. OR N 39 deg. 28 min. 56.453 secs.		Long: W 107.837 deg. OR W -108 deg. 9 min. 48.204 secs.	
Contractor: NABORS 576		Rig/Platform Name/Num: NABORS 576	
Job Purpose: Cement Surface Casing			Ticket Amount:
Well Type: Development Well		Job Type: Cement Surface Casing	
Sales Person: MAYO, MARK		Srv Supervisor: CASTILLO, FRANCISCO	MBU ID Emp #: 513620

Activity Description	Date/Time	Cht #	Rate bbl/min	Volume bbl		Pressure psig		Comments
				Stage	Total	Tubing	Casing	
Pre-Convoy Safety Meeting	02/17/2013 12:20							ALL HES PERSONEL
Crew Leave Yard	02/17/2013 12:30							
Arrive At Loc	02/17/2013 14:00							DRILLING RIG WAS PULLING DRILL PIPE OUT/LEFT CEMENT TRUCKS ON A LOCATION BELOW TO KEEP OUT OF THE WAY TILL RIG FINISHED PULLING PIPE.
Assessment Of Location Safety Meeting	02/17/2013 15:00							ALL HES PERSONEL/STAGE TRUCKS ON LOCATION
Rig-Up Equipment	02/17/2013 15:20							1-ELITE, 1-660 BULK TRUCK, 2' HIGH PRESSURE PUMPING IRON, PLUG CONTAINER AND QUICK LATCH
Rig-Up Completed	02/17/2013 16:20							COMPLETETLY RIGGED UP/WAITING ON RIG TO FINISH RUNNING CASING.
Other	02/17/2013 16:21							RIG BEGAN TO RUN CASING/LANDED CASING AT 17:30
Pre-Job Safety Meeting	02/17/2013 18:00							ALL HES PERSONEL AND RIG CREW
Activity Description	Date/Time	Cht #	Rate bbl/min	Volume bbl		Pressure psig		Comments
				Stage	Total	Tubing	Casing	

Sold To #: 300721

Ship To #: 2975551

Quote #:

Sales Order #: 900150803

SUMMIT Version: 7.3.0078

Tuesday, May 14, 2013 06:34:00

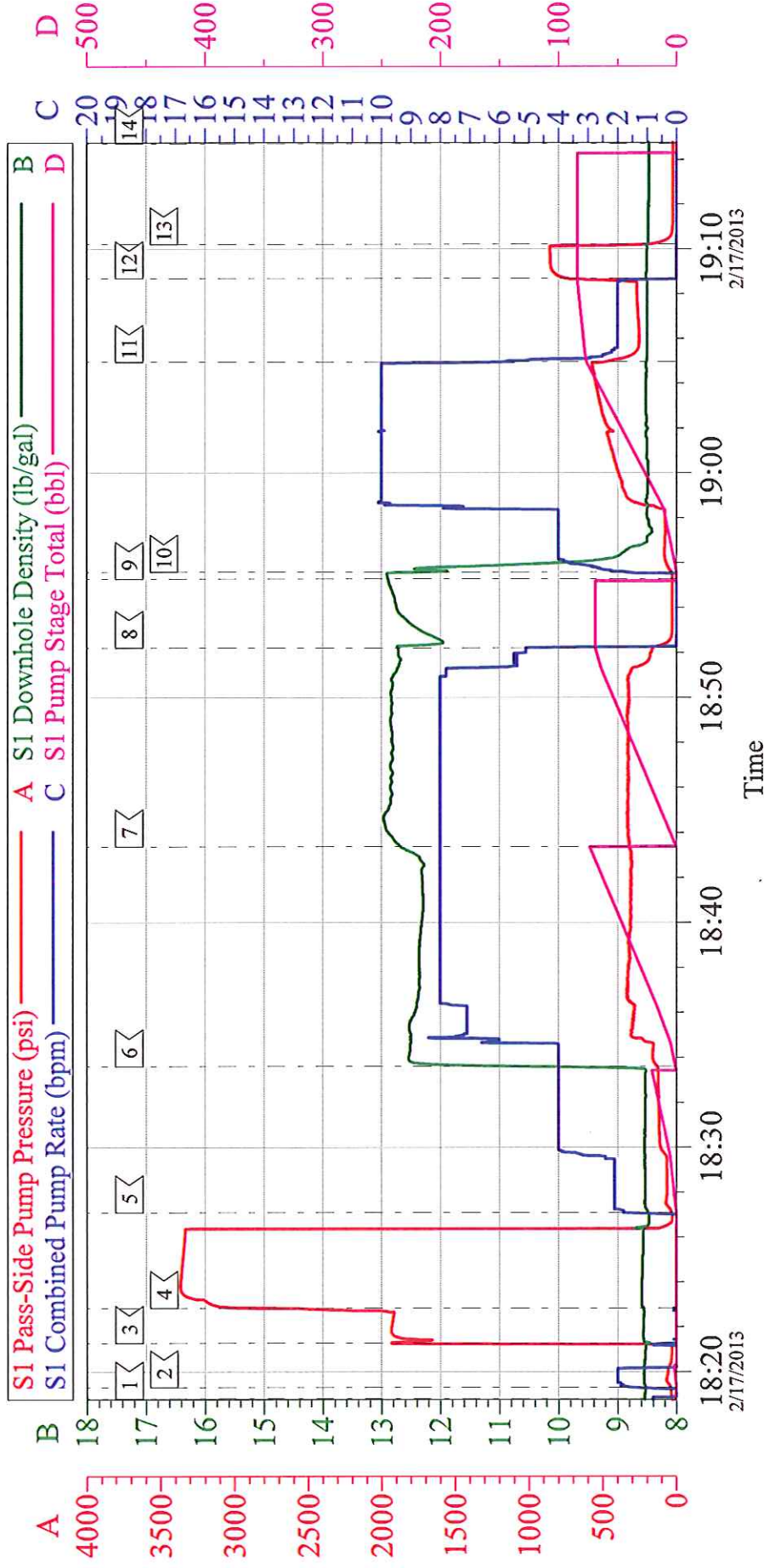
Start Job	02/17/2013 18:18							TP- 1124.81, TD- 1145, SJ- 44.06, CSG- 9.625 32.3# H-40, OH- 13.5, MUD-10 PPG, FV-90, PV-33, YP-8.4, TEMP- 68
Other	02/17/2013 18:19		2	2			65.0	FILL LINES
Other	02/17/2013 18:21		0.2	0.2				STALL OUT/PRESSURE HELD AT 1940 PSI
Pressure Test	02/17/2013 18:22		0.2	0.2				ALL LINES HELD PRESSURE AT 3365 PSI
Pump Spacer 1	02/17/2013 18:27		2	5			65.0	FRESH WATER
Pump Spacer 1	02/17/2013 18:30		4	10			125.0	FRESH WATER/TOTAL FRESH WATER SPACER 20 BBLS
Pump Lead Cement	02/17/2013 18:33		4	10			160.0	160 SKS, 12.3 PPG, 2.38 FT3/SK, 13.75 GAL/SK, SETUP TIME 2:38 HRS AT 70 BC
Pump Lead Cement	02/17/2013 18:36		7	6			300.0	
Pump Lead Cement	02/17/2013 18:37		8	52			310.0	TOTAL LEAD 68 BBLS
Pump Tail Cement	02/17/2013 18:43		8	60			315.0	160 SKS, 12.8 PPG, 2.11 FT3/ SK, 11.75 GAL/SK, SETUP TIME 2:38 HRS AT 70 BC
Shutdown	02/17/2013 18:52							
Drop Top Plug	02/17/2013 18:55							PLUG DROP VERIFIED BY DRILLER
Pump Displacement	02/17/2013 18:55		4	75			80.0	FRESH WATER, GOT RETURNS 55 BBLS INTO DISPLACEMENT, GOT 30 BBLS/71 SKS OF CEMENT TO SURFACE
Slow Rate	02/17/2013 19:04		2	10			540.0	
Bump Plug	02/17/2013 19:08			85			861.0	
Check Floats	02/17/2013 19:10							FLOATS HELD/ 0.5 BBLS FLOW BACK
End Job	02/17/2013 19:14							
Post-Job Safety Meeting (Pre Rig-Down)	02/17/2013 19:21							ALL HES PERSONEL

Cementing Job Log

Activity Description	Date/Time	Cht #	Rate bbl/ min	Volume bbl		Pressure psig		Comments
				Stage	Total	Tubing	Casing	
Depart Location for Service Center or Other Site	02/17/2013 20:30							
Other	02/17/2013 20:31							THANK YOU FOR CHOOSING HALLIBURTON, JAVIER CASTILLO AND CREW

WPX RWF 423-36

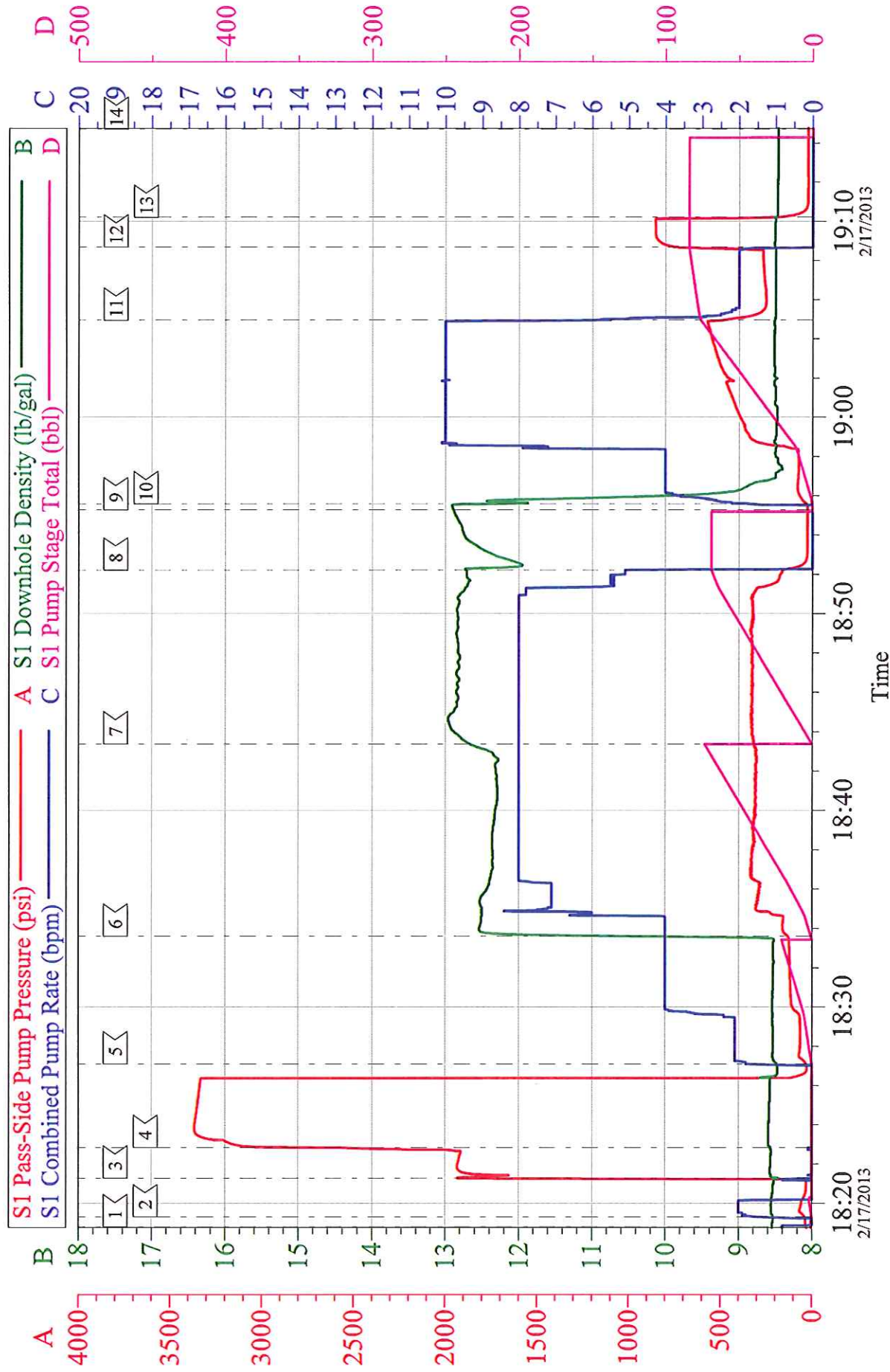
5/8 SURFACE



Customer:	WPX ENERGY ROCKY MOUNTAIN LLC-EBUS	Job Date:	17-Feb-2013	Sales Order #:	900150803
	Well Description: RWF 423-36	Job Type:	SURFACE	ADC Used:	YES
	Company Rep: AL HARTL	Cement Supervisor:	JAVIER CASTILLO	Elite #7:	TRAVIS BROWN

WPX RWF 423-36

5/8 SURFACE



Customer:	WPX ENERGY ROCKY MOUNTAIN LLC-EBUS	Job Date:	17-Feb-2013	Sales Order #:	900150803
Well Description:	RWF 423-36	Job Type:	SURFACE	ADC Used:	YES
Company Rep:	AL HARTL	Cement Supervisor:	JAVIER CASTILLO	Elite #7:	TRAVIS BROWN

OptiCem v6.4.10
17-Feb-13 19:41