

1996, Private Alum. Cap,
0.1' Above Ground,
LS30127,
Lat: 39.652208°
Long: 104.565967°

WELL LOCATION PLAT T5S, R64W, 6th P.M.

ConocoPhillips Company

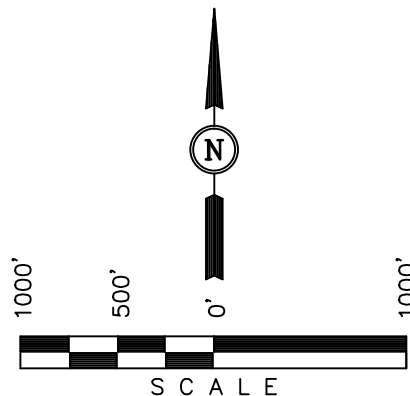
Well location, TEBO #4-1H, located as shown in
SW 1/4 SW 1/4 of Section 4, T5S, R64W, 6th
P.M., Arapahoe County, Colorado.

BASIS OF ELEVATION

BENCHMARK 374 LOCATED ON THE SECTION LINE BETWEEN
SECTIONS 12 & 13, T5S, R64W, 6th. P.M., TAKEN FROM 1988
PUBLISHED DATUM BY THE UNITED STATES DEPARTMENT OF
THE INTERIOR, GEOLOGICAL SURVEY AS BEING 6054.61 FEET.

BASIS OF BEARINGS

BASIS OF BEARINGS IS A G.P.S. OBSERVATION.



CERTIFICATE

THIS IS TO CERTIFY THAT THE ABOVE PLAT WAS PREPARED FROM
FIELD NOTES OF ACTUAL SURVEYS MADE BY ME OR UNDER MY
SUPERVISION AND THAT THE SAME ARE TRUE AND CORRECT TO THE
BEST OF MY KNOWLEDGE AND BELIEF.

REGISTERED LAND SURVEYOR
REGISTRATION NO. 17492
STATE OF COLORADO

REV: 02-18-13 J.W.
REV: 10-12-12 J.W.
REV: 09-21-12 J.W.

UINTAH ENGINEERING & LAND SURVEYING
85 SOUTH 200 EAST - VERNAL, UTAH 84078
(435) 789-1017

LEGEND:

- └─┘ = 90° SYMBOL
- = PROPOSED WELL HEAD.
- ▲ = SECTION CORNERS LOCATED.

PDOP = 1.9

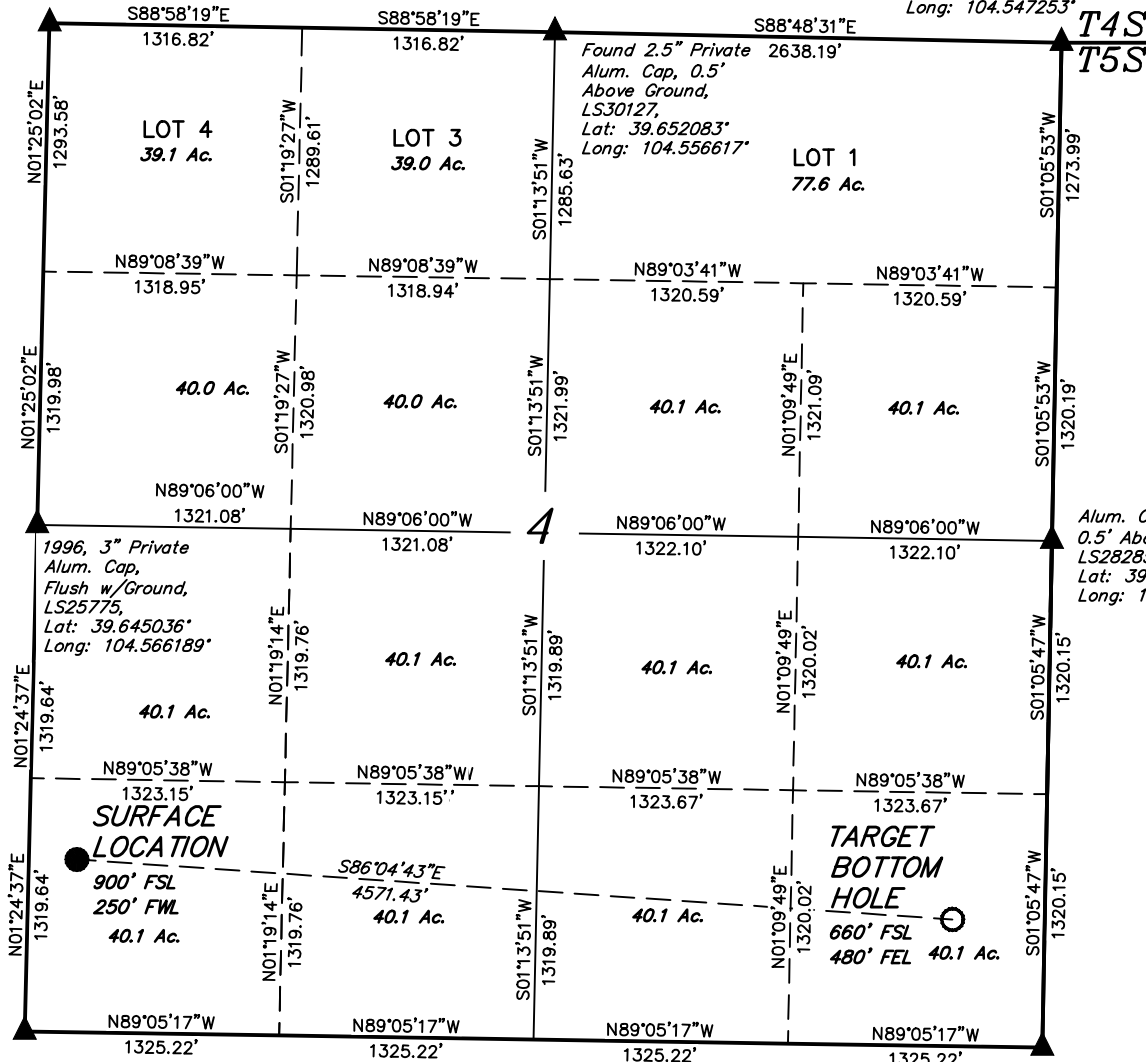
NAD 83 (TARGET BOTTOM HOLE)	NAD 83 (SURFACE LOCATION)
LATITUDE = 39°38'21.86" (39.639406)	LATITUDE = 39°38'24.92" (39.640256)
LONGITUDE = 104°32'57.33" (104.549258)	LONGITUDE = 104°33'55.62" (104.565450)
NAD 27 (TARGET BOTTOM HOLE)	NAD 27 (SURFACE LOCATION)
LATITUDE = 39°38'21.91" (39.639419)	LATITUDE = 39°38'24.97" (39.640269)
LONGITUDE = 104°32'55.45" (104.548736)	LONGITUDE = 104°33'53.74" (104.564928)

SCALE 1" = 1000'	DATE SURVEYED: 02-27-12	DATE DRAWN: 03-15-12
PARTY Z.B. A.G. S.S.	REFERENCES G.L.O. PLAT	
WEATHER COLD	FILE ConocoPhillips Company	

SECTION BREAKDOWN T5S, R64W, 6th P.M.

1996, Private Alum. Cap,
0.1' Above Ground,
LS30127,
Lat: 39.652208°
Long: 104.565967°

2011, UE Alum. Cap,
0.1' Above Ground,
LS28285
Lat: 39.651936°
Long: 104.547253°



2010, 3.25" Private Alum. Cap,
0.5' Below Ground,
LS33200,
Lat: 39.637797°
Long: 104.566414°

2010, 3.25" Private Alum. Cap,
0.5' Below Ground,
LS33200,
Lat: 39.637572°
Long: 104.547600°

ConocoPhillips Company

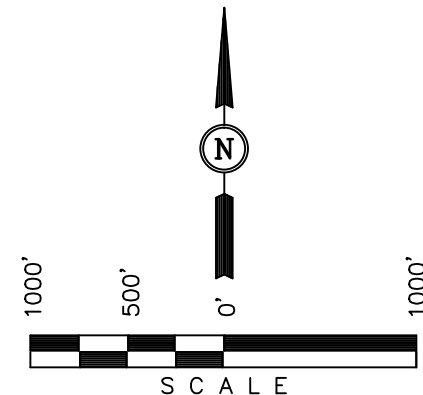
Well location, TEBO #4-1H, located as shown in
SE 1/4 SE 1/4 of Section 4, T5S, R64W, 6th
P.M., Arapahoe County, Colorado.

BASIS OF ELEVATION

BENCHMARK 374 LOCATED ON THE SECTION LINE BETWEEN
SECTIONS 12 & 13, T5S, R64W, 6th. P.M., TAKEN FROM 1988
PUBLISHED DATUM BY THE UNITED STATES DEPARTMENT OF
THE INTERIOR, GEOLOGICAL SURVEY AS BEING 6054.61 FEET.

BASIS OF BEARINGS

BASIS OF BEARINGS IS A G.P.S. OBSERVATION.



CERTIFICATE

THIS IS TO CERTIFY THAT THE ABOVE PLAT WAS PREPARED FROM
FIELD NOTES OF ACTUAL SURVEYS MADE BY ME OR UNDER MY
SUPERVISION AND THAT THE SAME ARE TRUE AND CORRECT TO THE
BEST OF MY KNOWLEDGE AND BELIEF.

REV: 02-18-13 J.W.
REV: 10-12-12 J.W.
REV: 09-21-12 J.W.
REV: 06-26-12 J.J.

REGISTERED LAND SURVEYOR
REGISTRATION NO. 17492
STATE OF COLORADO
02-18-13

LEGEND:

- └─┘ = 90° SYMBOL
- = PROPOSED WELL HEAD.
- ▲ = SECTION CORNERS LOCATED.

PDOP = 1.9

NAD 83 (TARGET BOTTOM HOLE)	NAD 83 (SURFACE LOCATION)
LATITUDE = 39°38'21.86" (39.639406)	LATITUDE = 39°38'24.92" (39.640256)
LONGITUDE = 104°32'57.33" (104.549258)	LONGITUDE = 104°33'55.62" (104.565450)
NAD 27 (TARGET BOTTOM HOLE)	NAD 27 (SURFACE LOCATION)
LATITUDE = 39°38'21.91" (39.639419)	LATITUDE = 39°38'24.97" (39.640269)
LONGITUDE = 104°32'55.45" (104.548736)	LONGITUDE = 104°33'53.74" (104.564928)

UTAH ENGINEERING & LAND SURVEYING 85 SOUTH 200 EAST - VERNAL, UTAH 84078 (435) 789-1017		
SCALE 1" = 1000'	DATE SURVEYED: 02-27-12	DATE DRAWN: 03-15-12
PARTY Z.B. A.G. S.S.	REFERENCES G.L.O. PLAT	
WEATHER COLD	FILE ConocoPhillips Company	