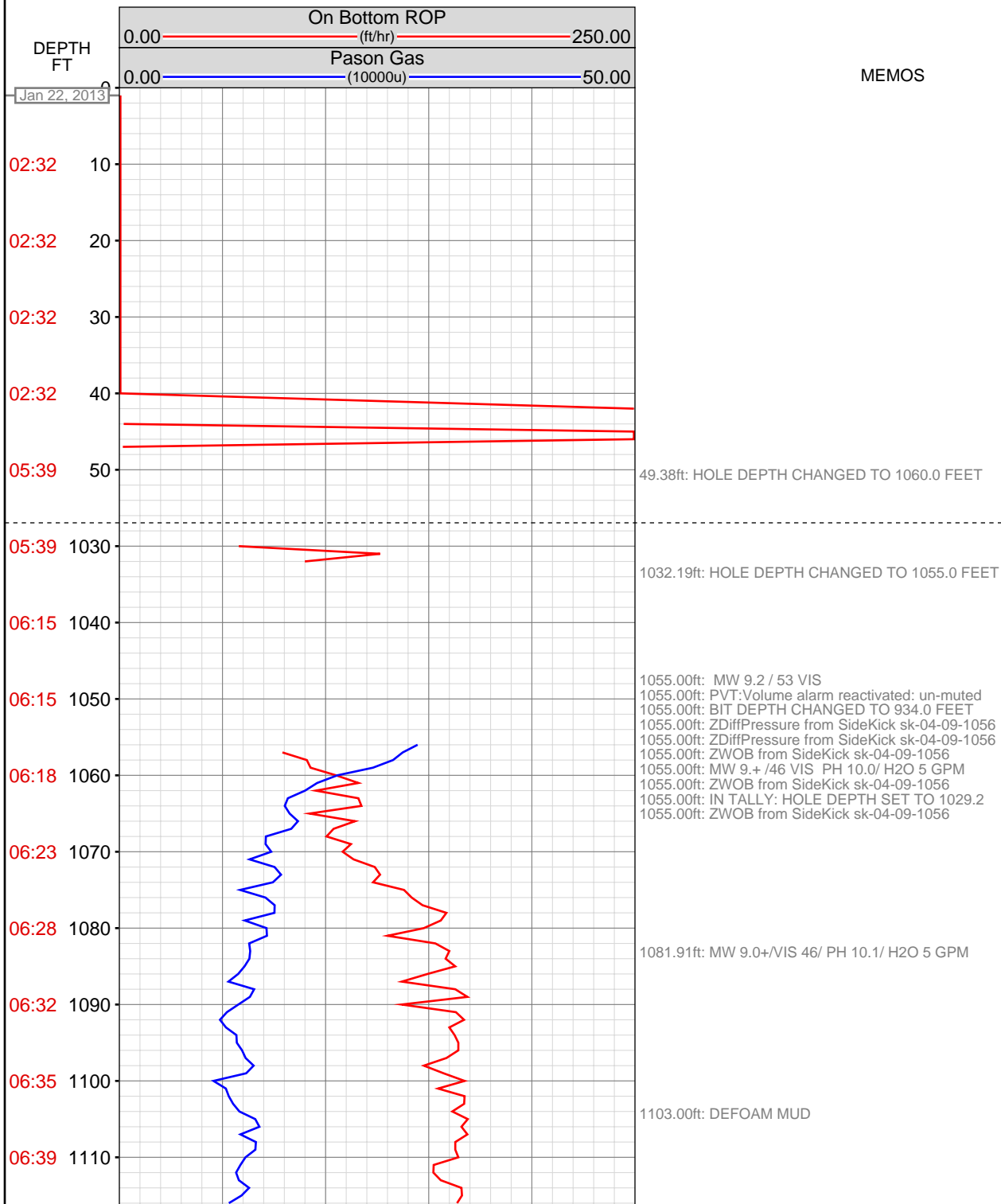


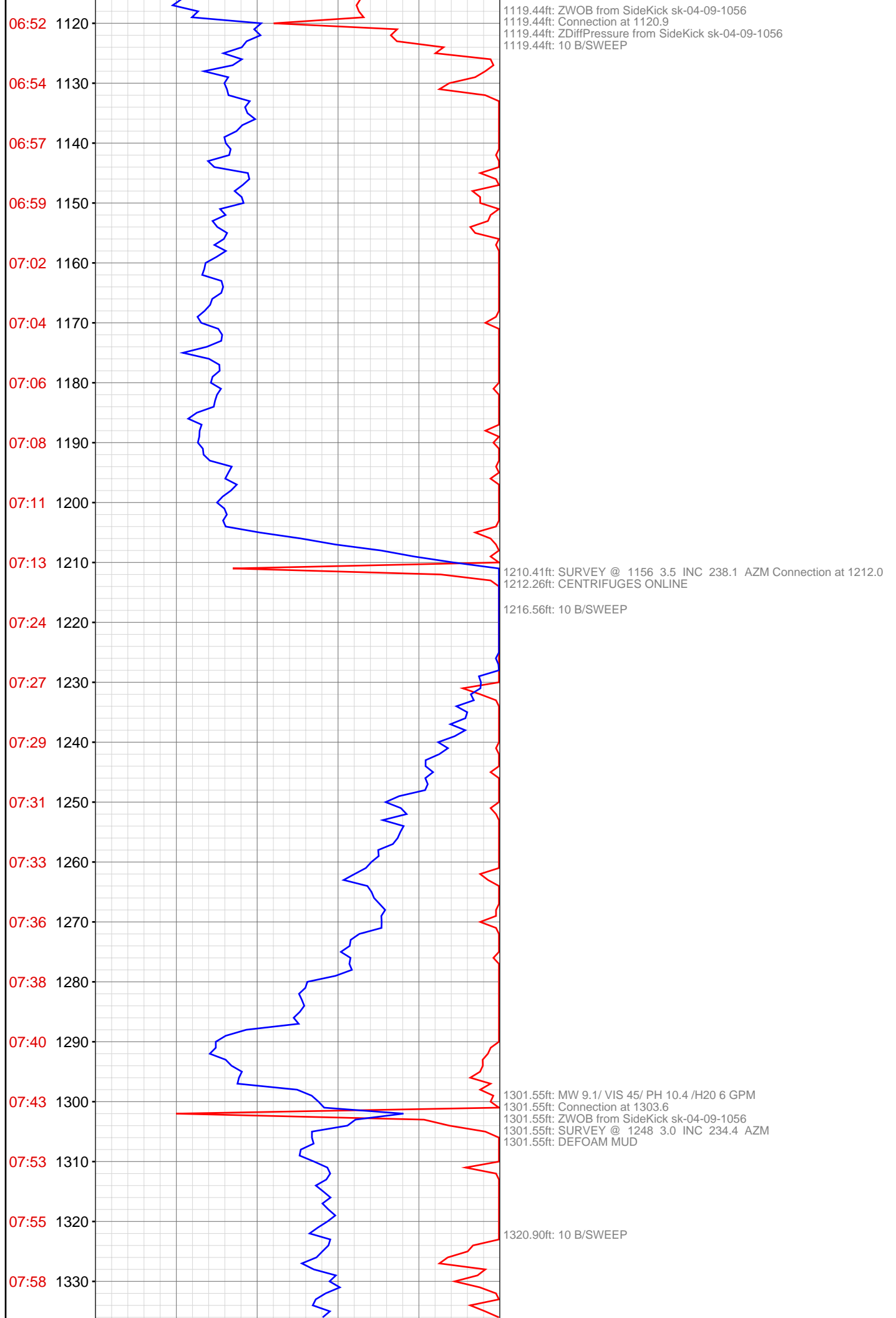
DataHub EDR Log

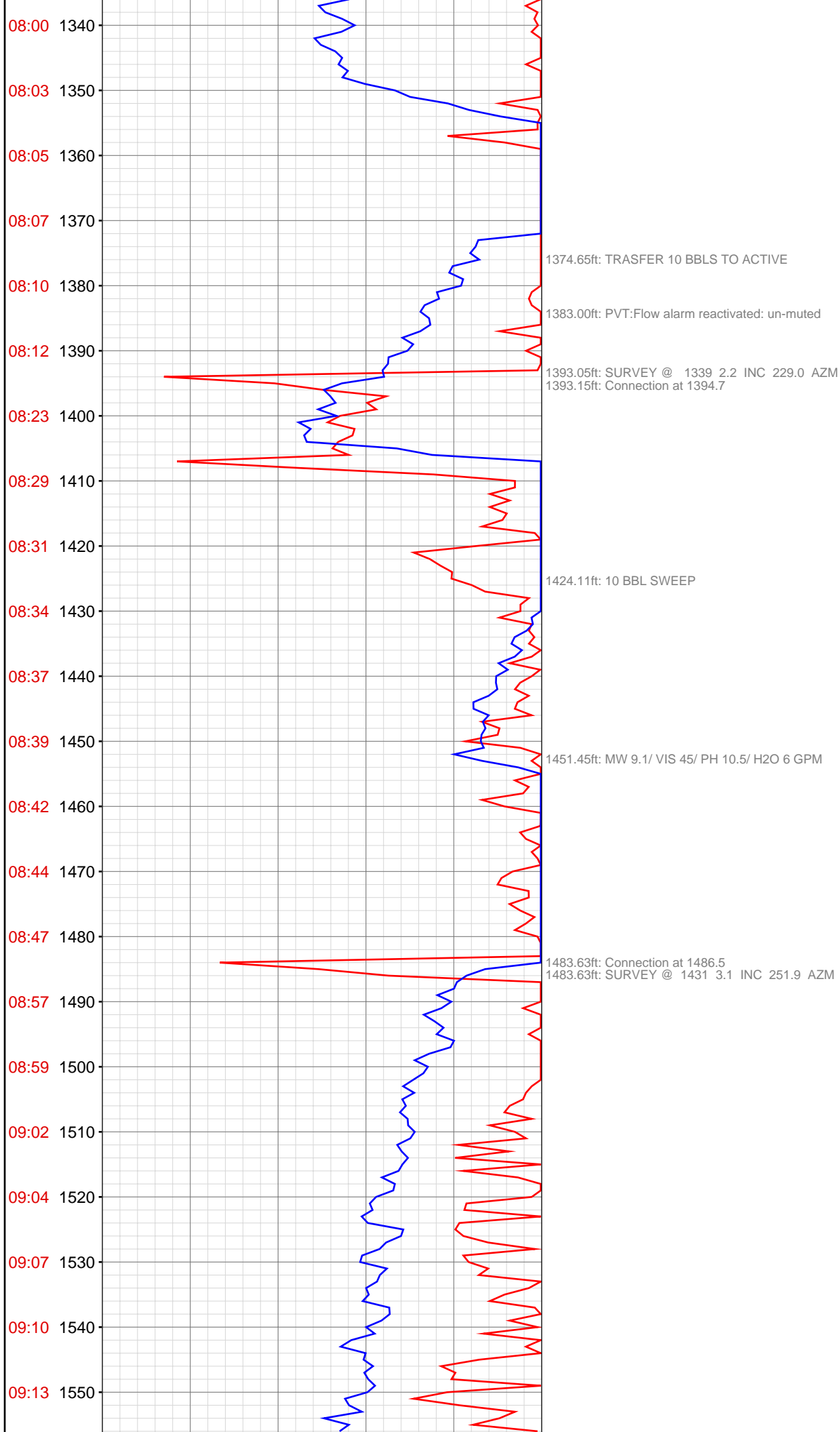
Mon Jan 28, 2013 09:09:14
Well Dossier 1358825937
Greg Veregin

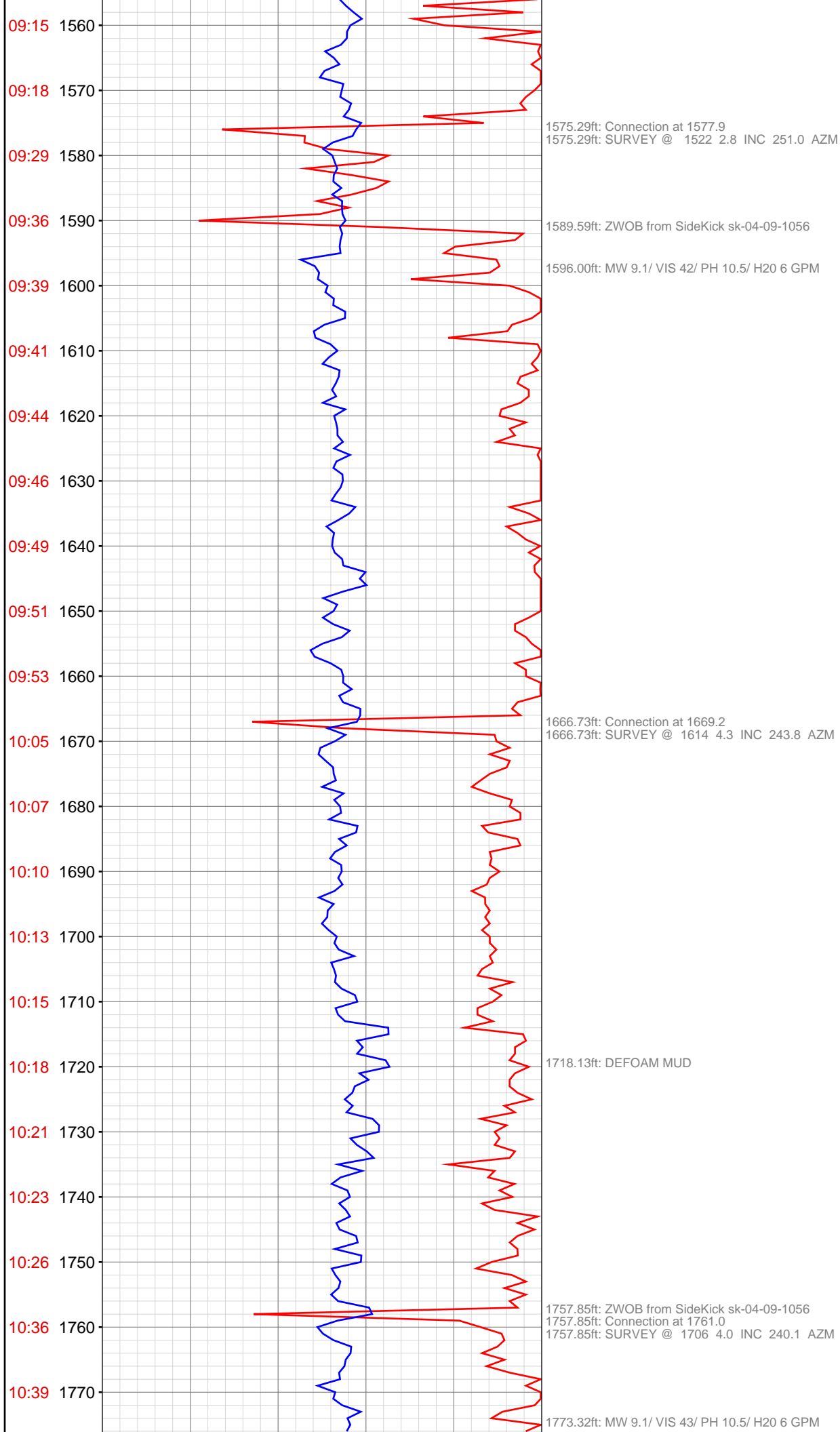
OPERATOR: EnCana Oil & Gas (USA), Inc.
WELL: SHIDELER FEE 6-3A
FIELD:
LOCATION: SW SE SEC 31, T007S, R92W6
COUNTRY: USA
RIG: Pat-UTI 303

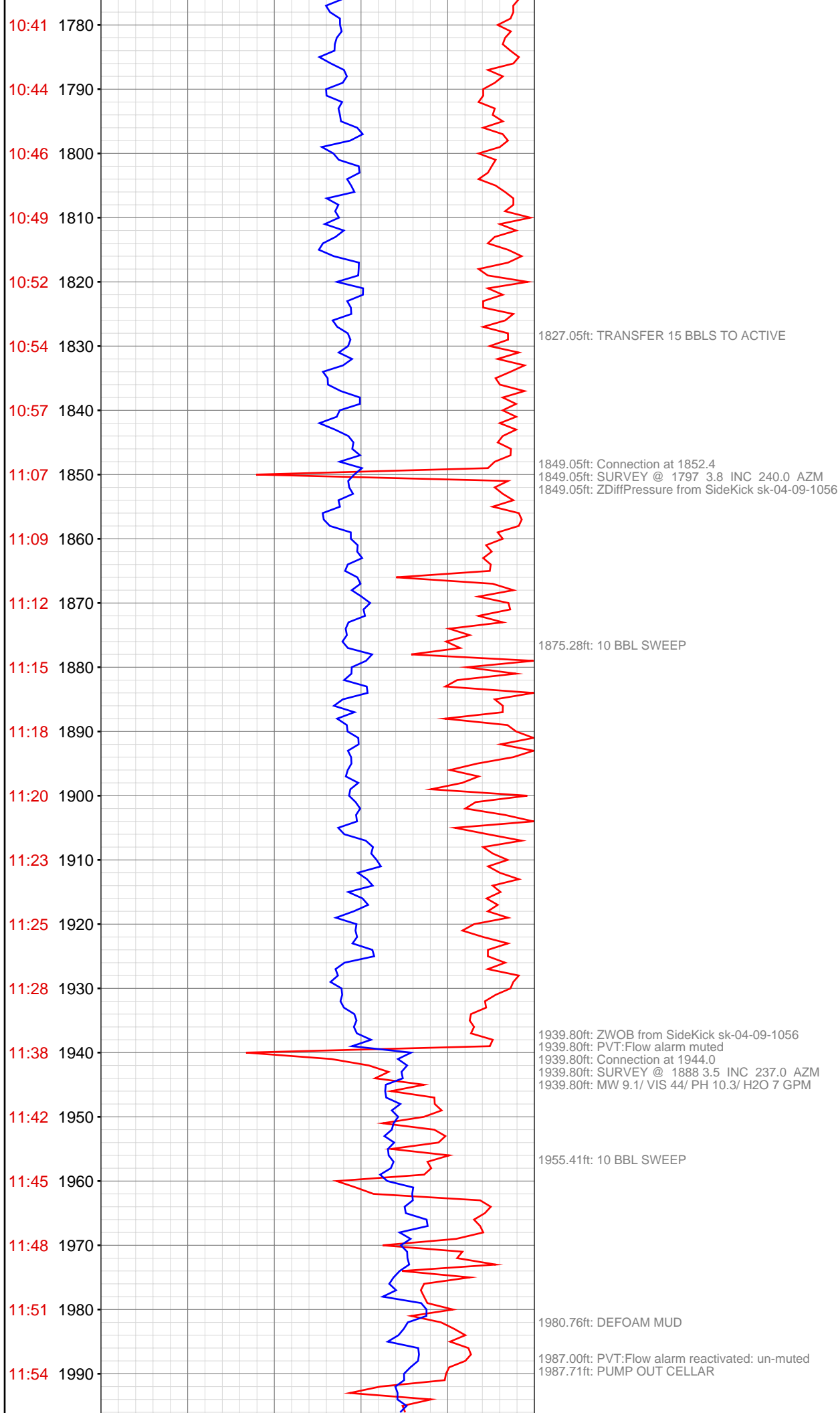
CONTRACTOR: Patterson-UTI Drilling Company
UNIQUE WELL ID: 05 045 21741 00
SPUD DATE: Jan 22, 2013 06:30
RELEASE DATE: Jan 27, 2013 00:00

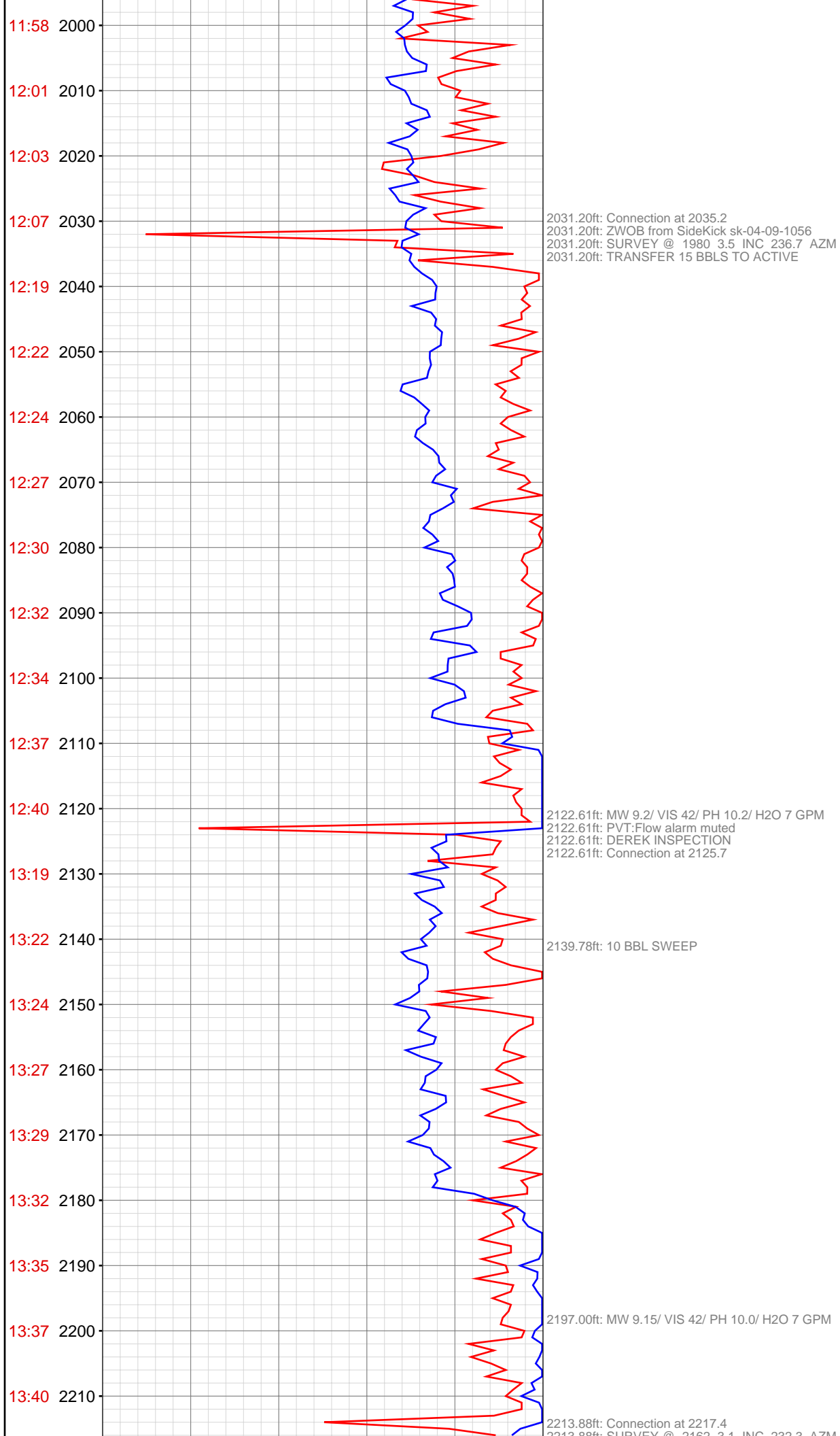


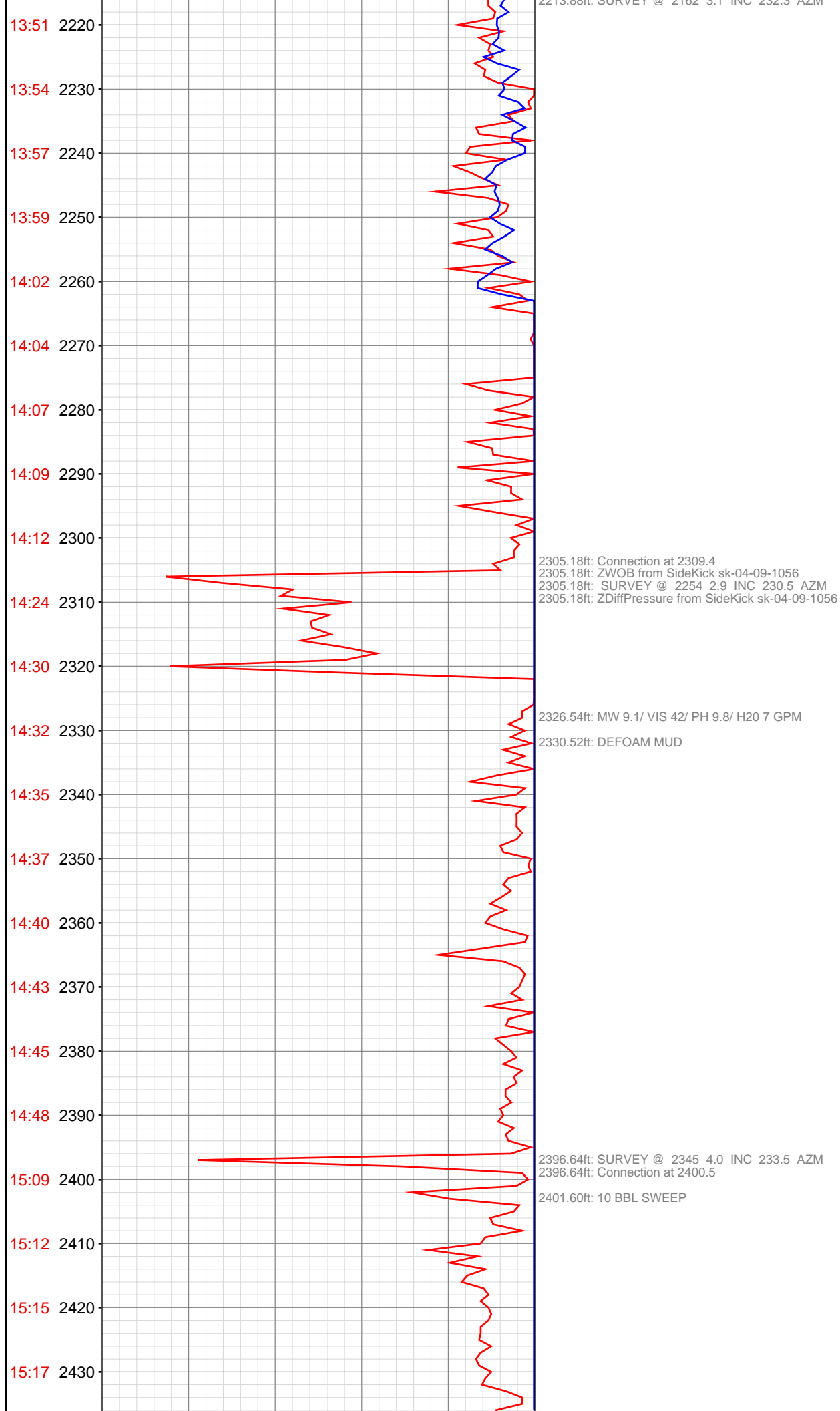


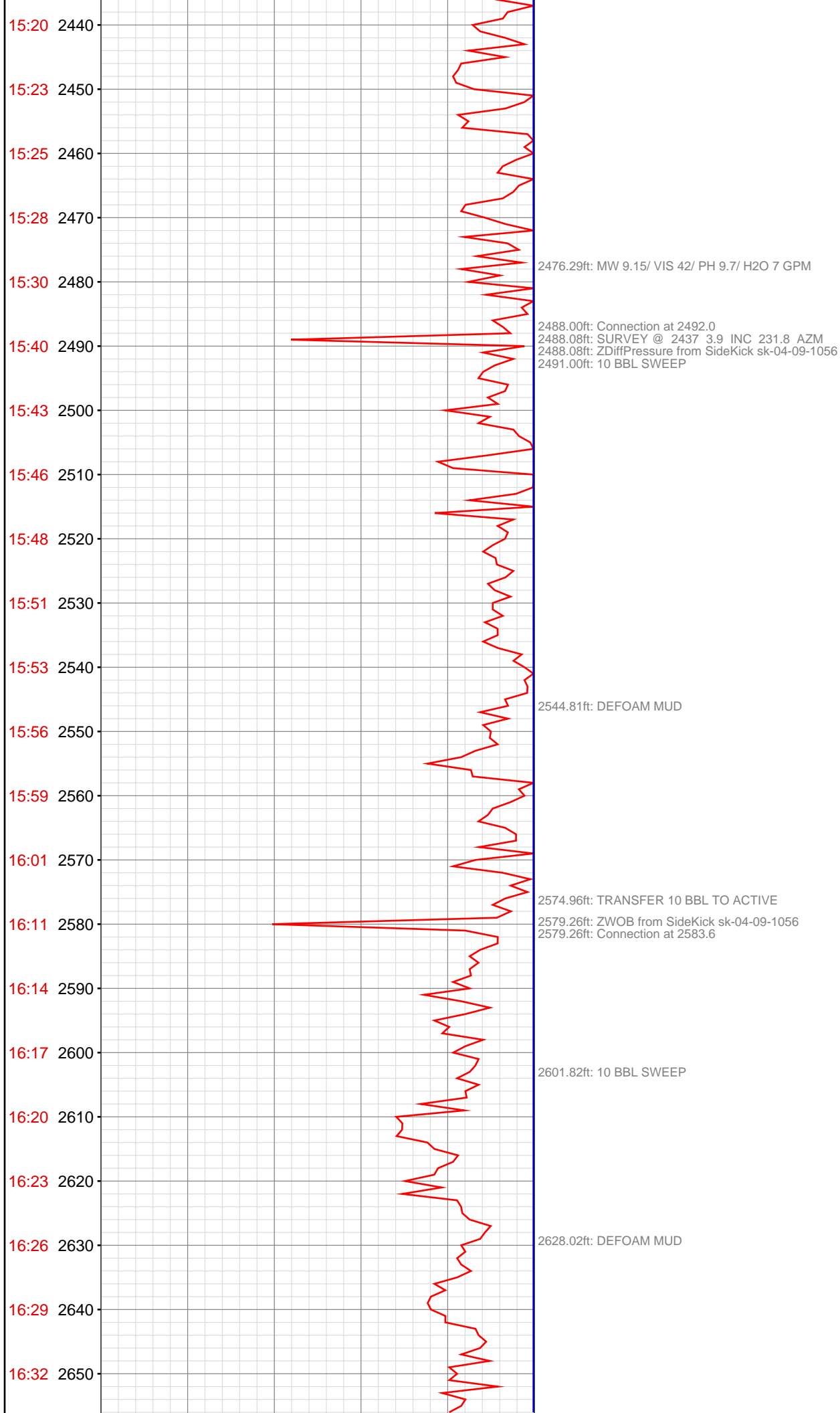


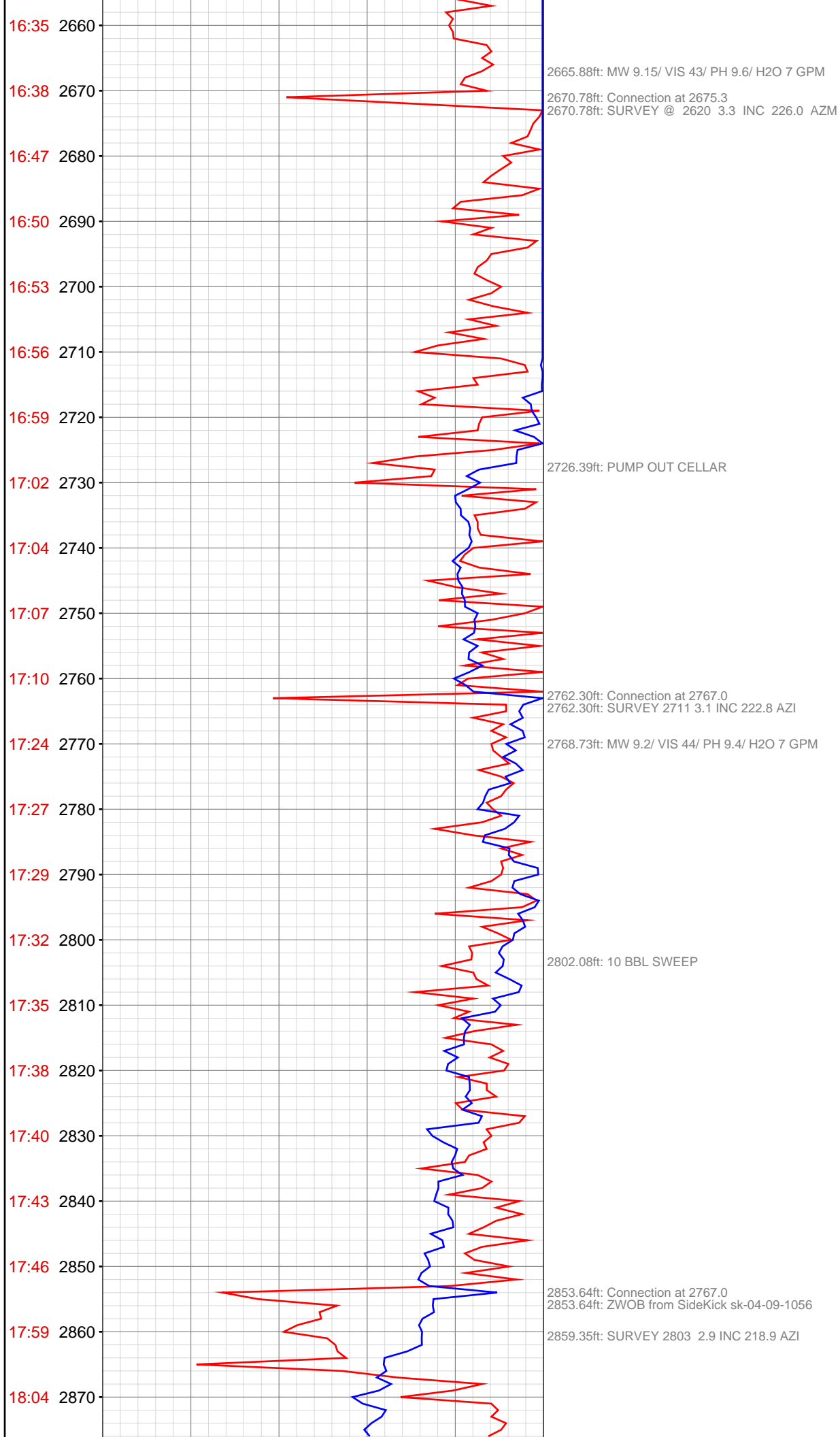


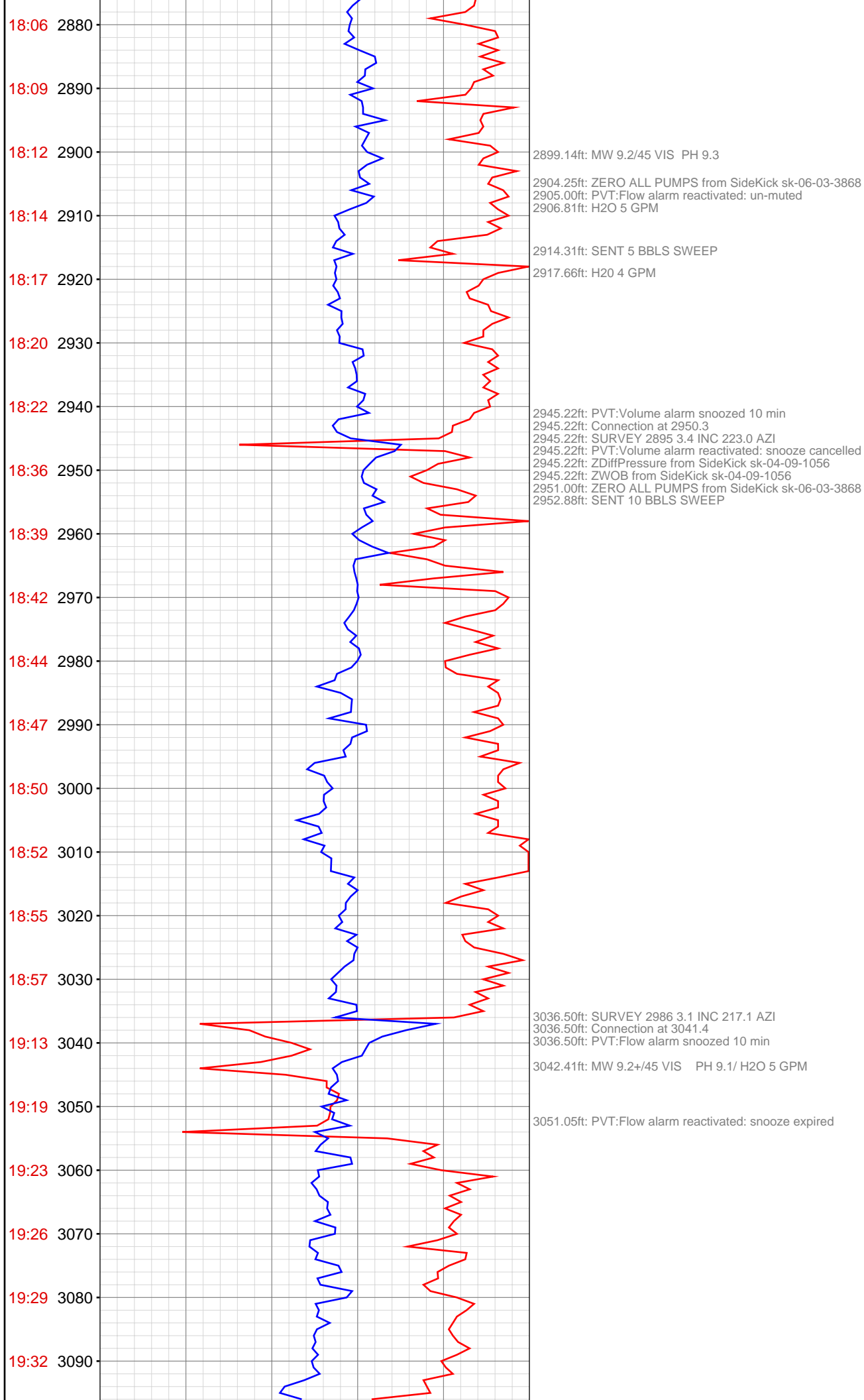


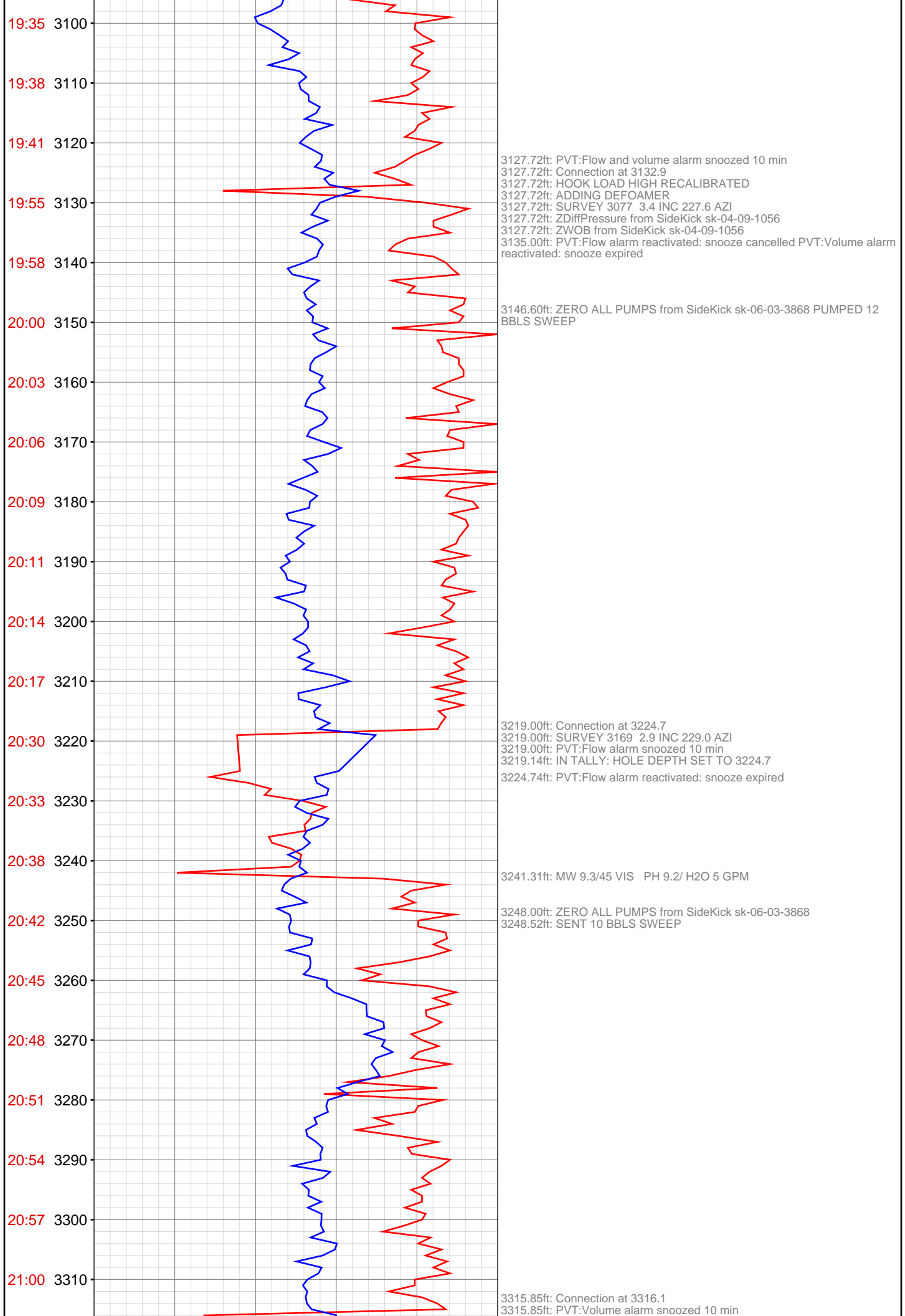


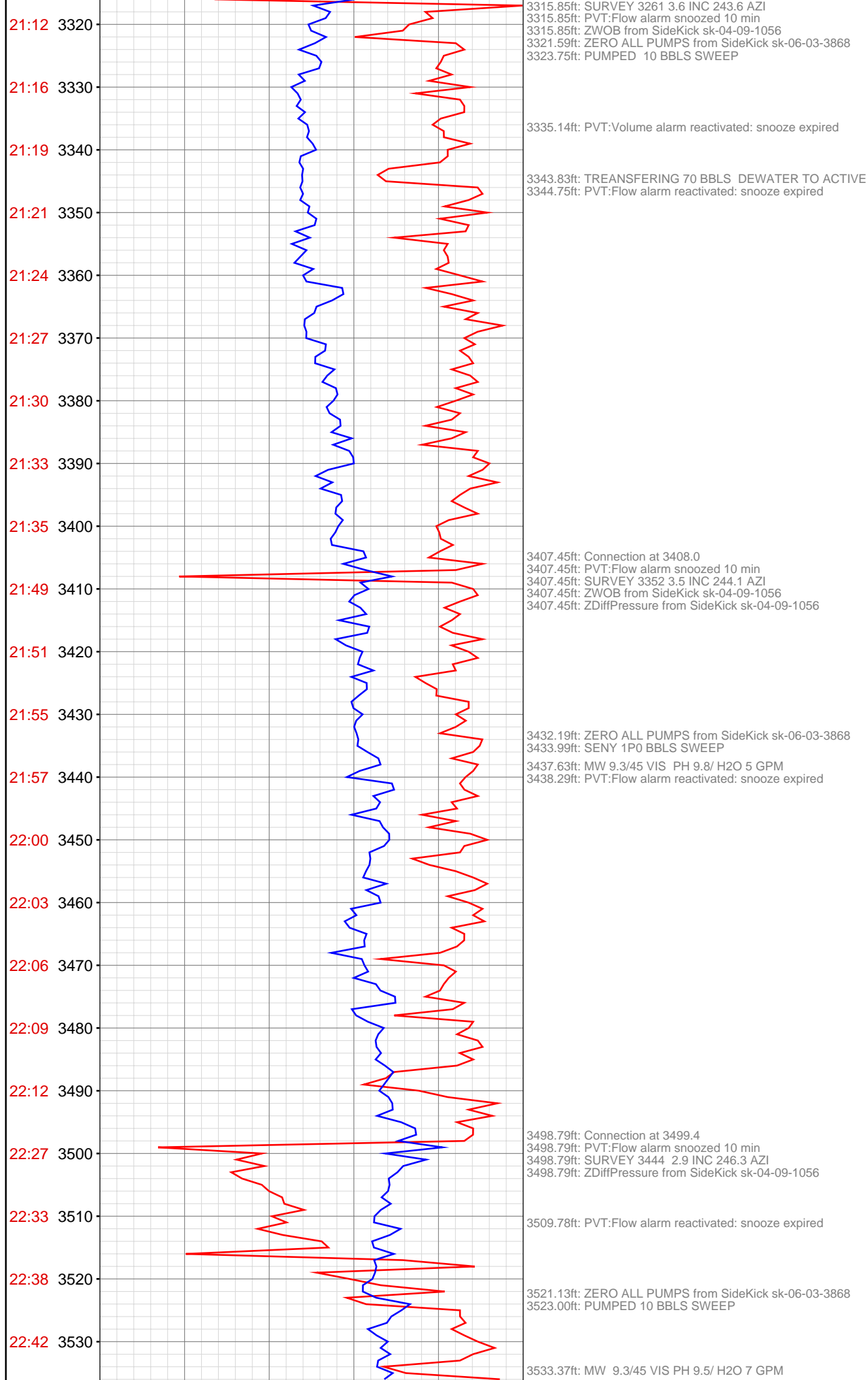


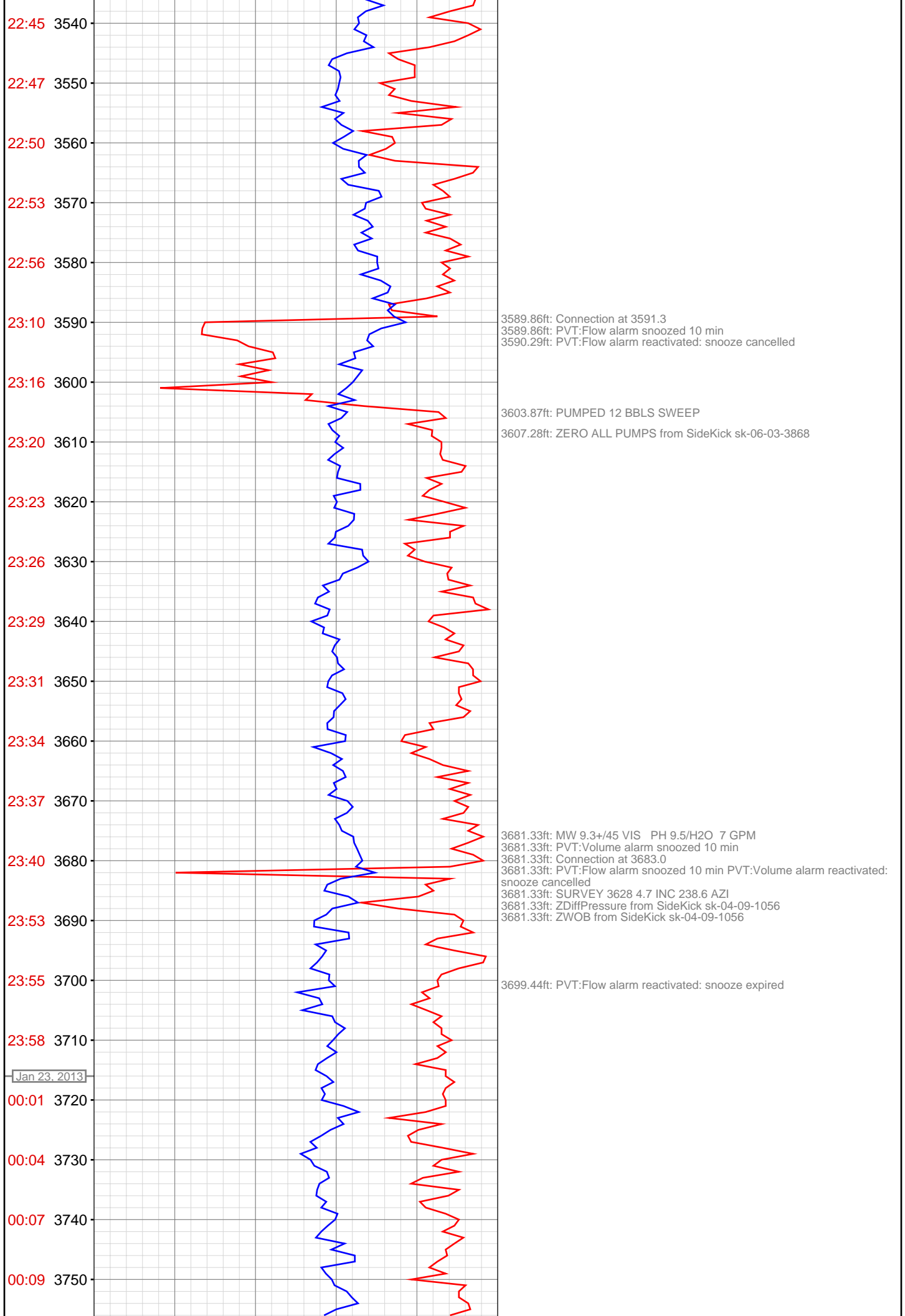


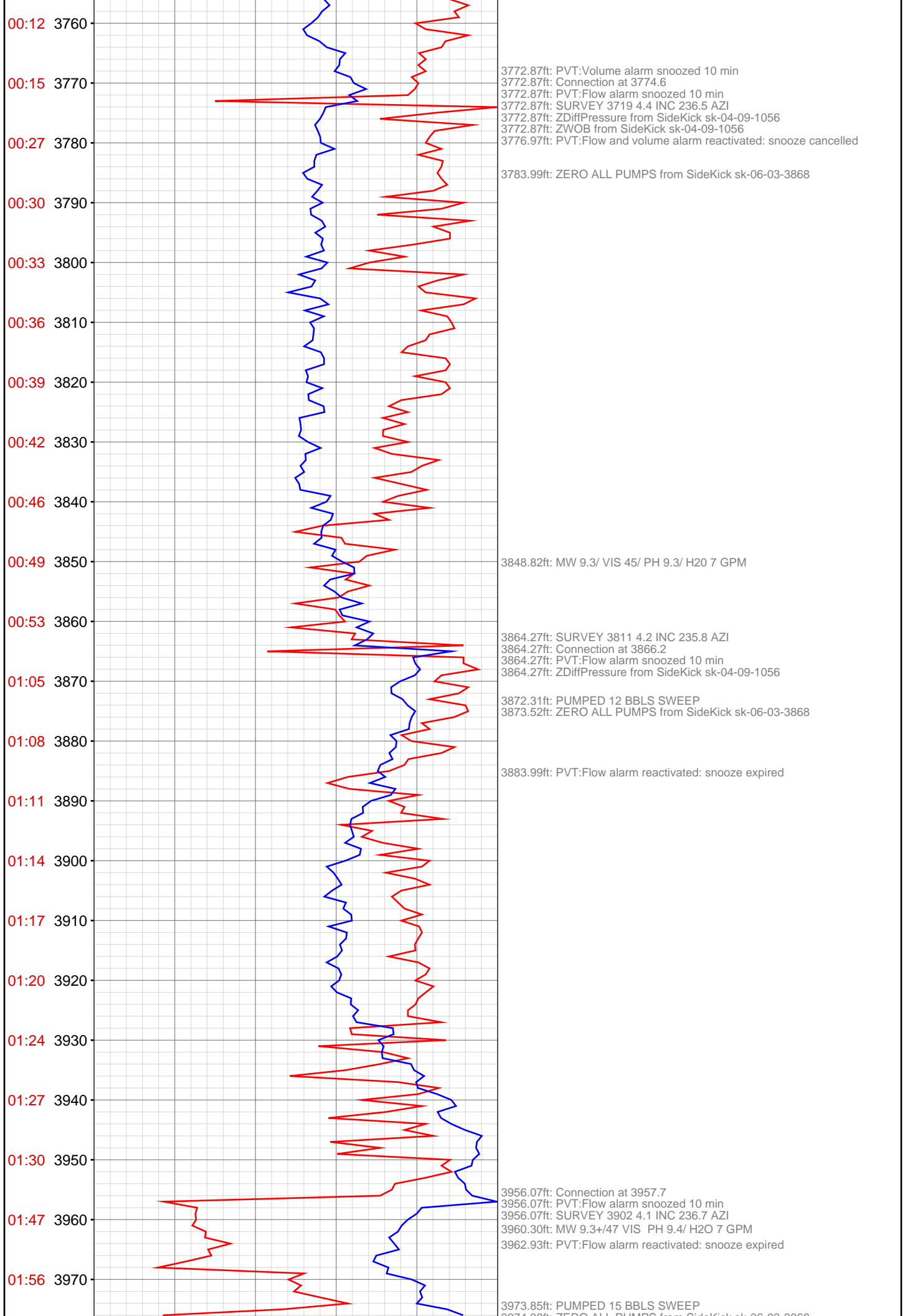


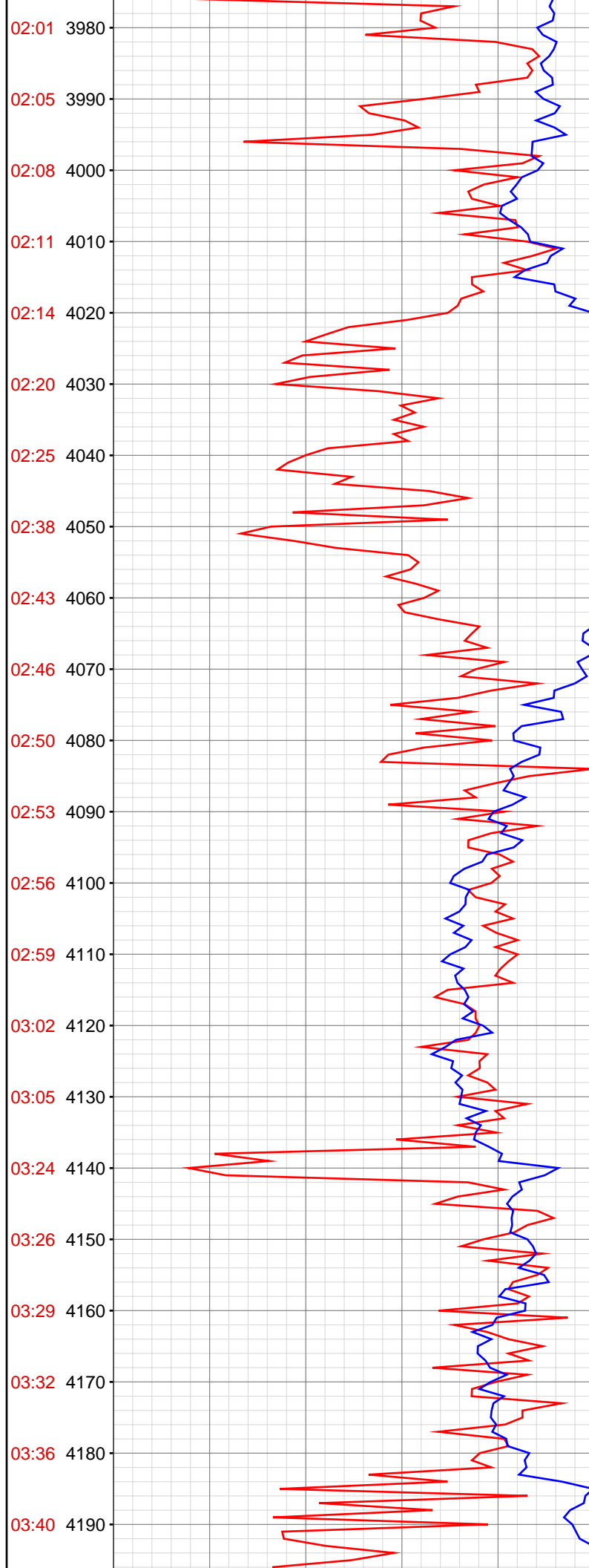








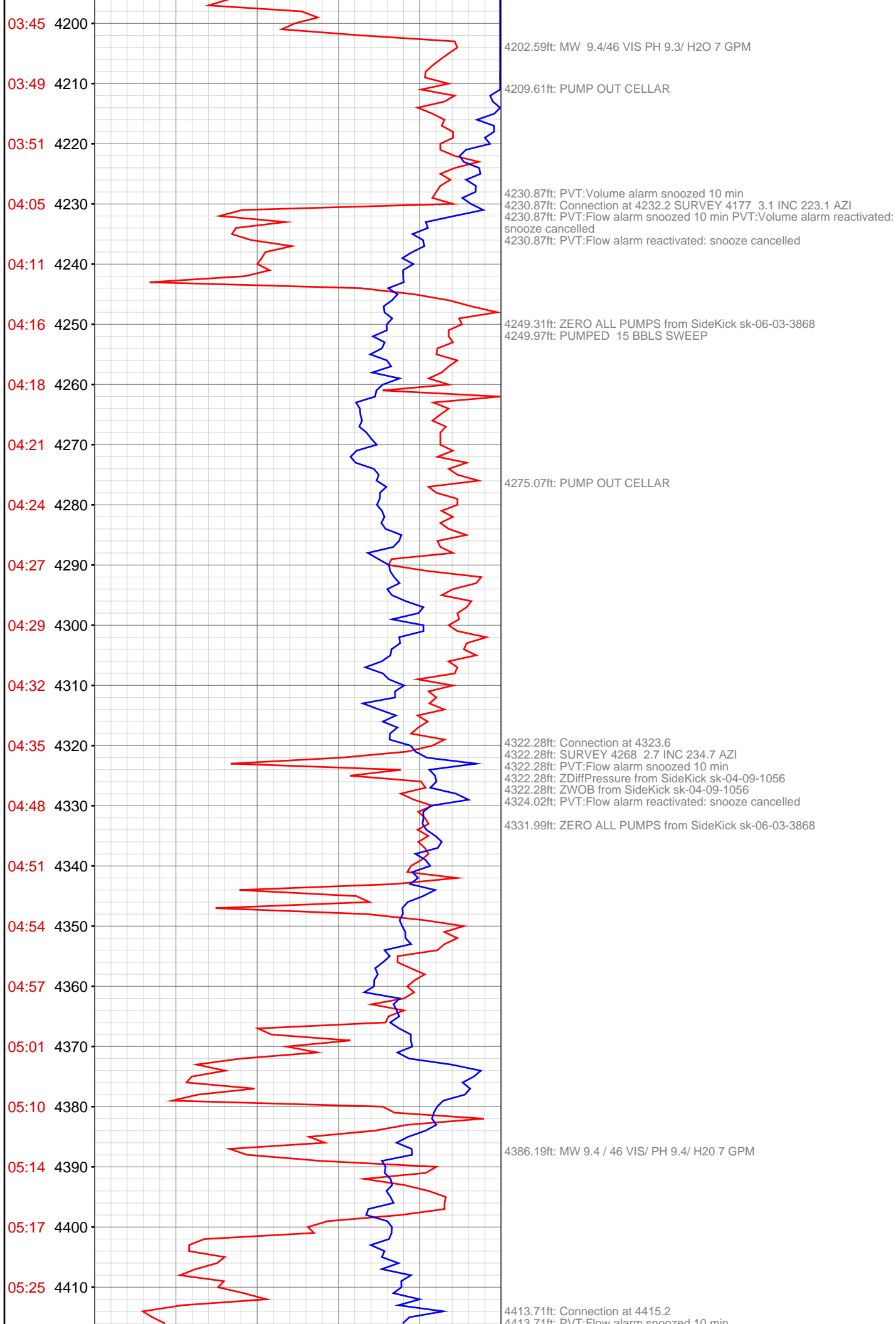


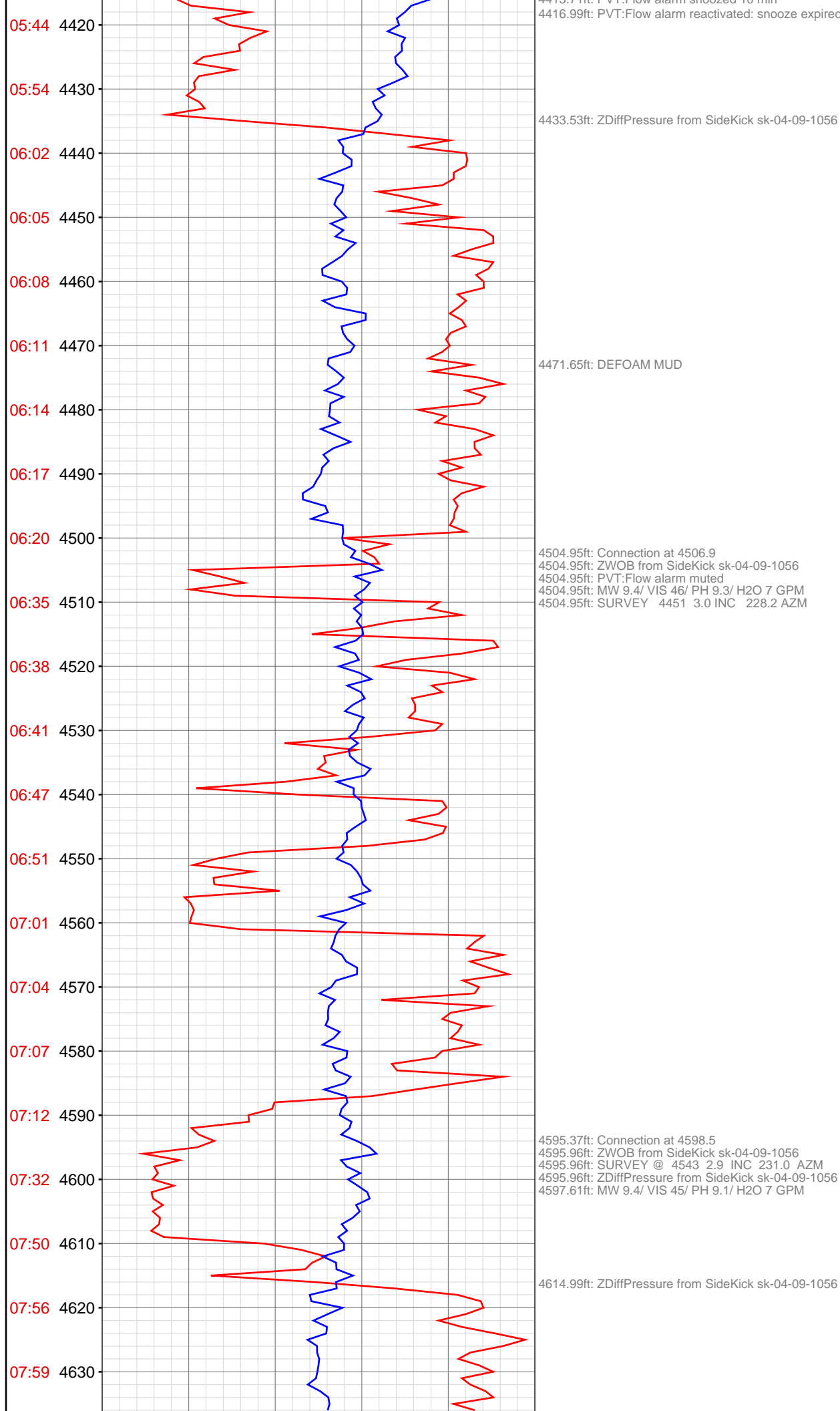


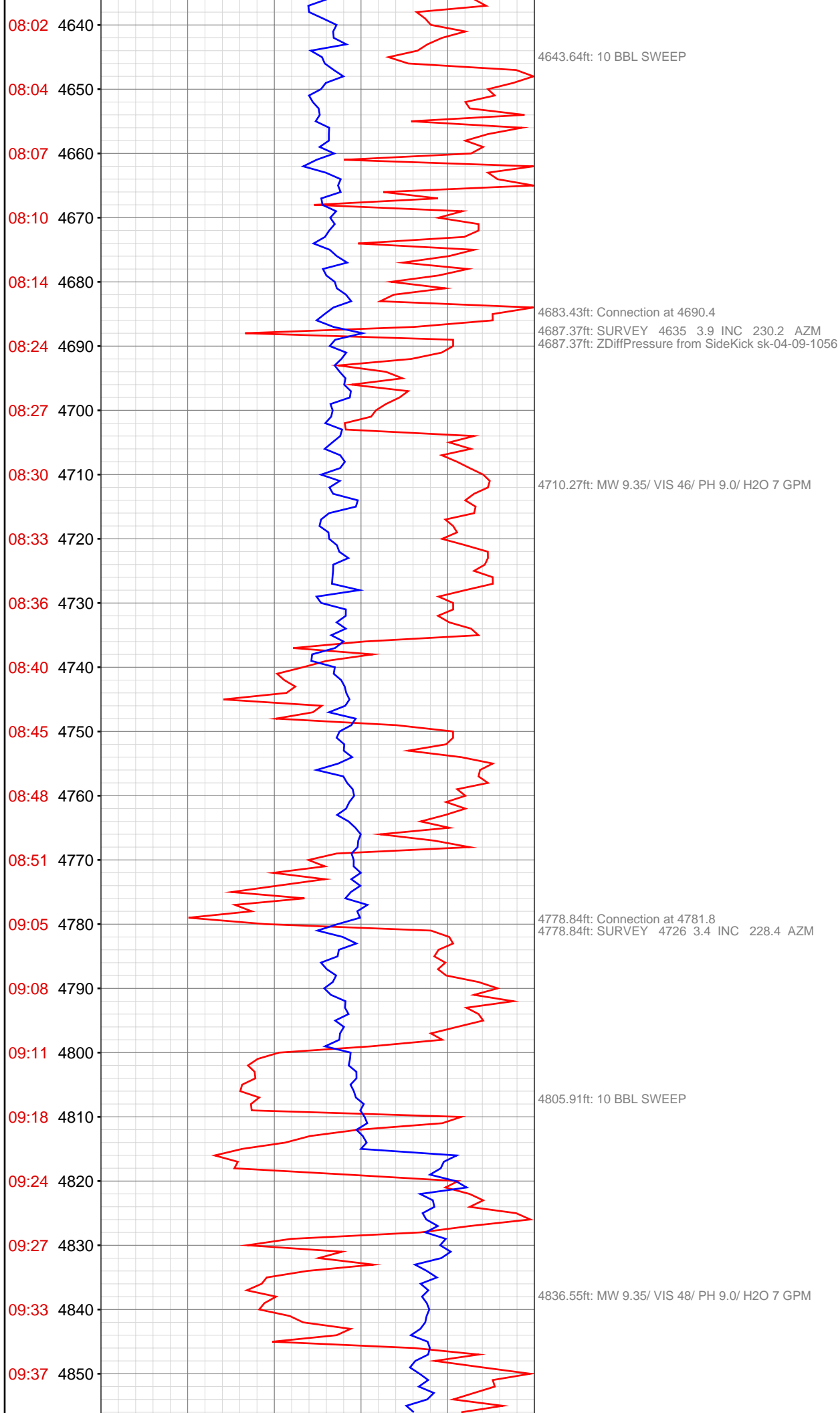
3974.38ft: ZERO ALL PUMPS from SideKick sk-06-03-3868
4047.57ft: MW 9.3+/47 VIS PH 9.2 /H2O 5GPM
4047.57ft: PVT:Flow and volume alarm snoozed 10 min
4047.57ft: Connection at 4049.1
4047.57ft: SURVEY 3994 3.7 INC 227.7 AZI
4047.57ft: PVT:Volume alarm reactivated: snooze cancelled
4047.57ft: ZWOB from SideKick sk-04-09-1056
4047.57ft: ZDiffPressure from SideKick sk-04-09-1056
4055.09ft: ZERO ALL PUMPS from SideKick sk-06-03-3868
4057.15ft: PUMPED 5 BBLS SWEEP
4058.50ft: PVT:Flow alarm reactivated: snooze expired

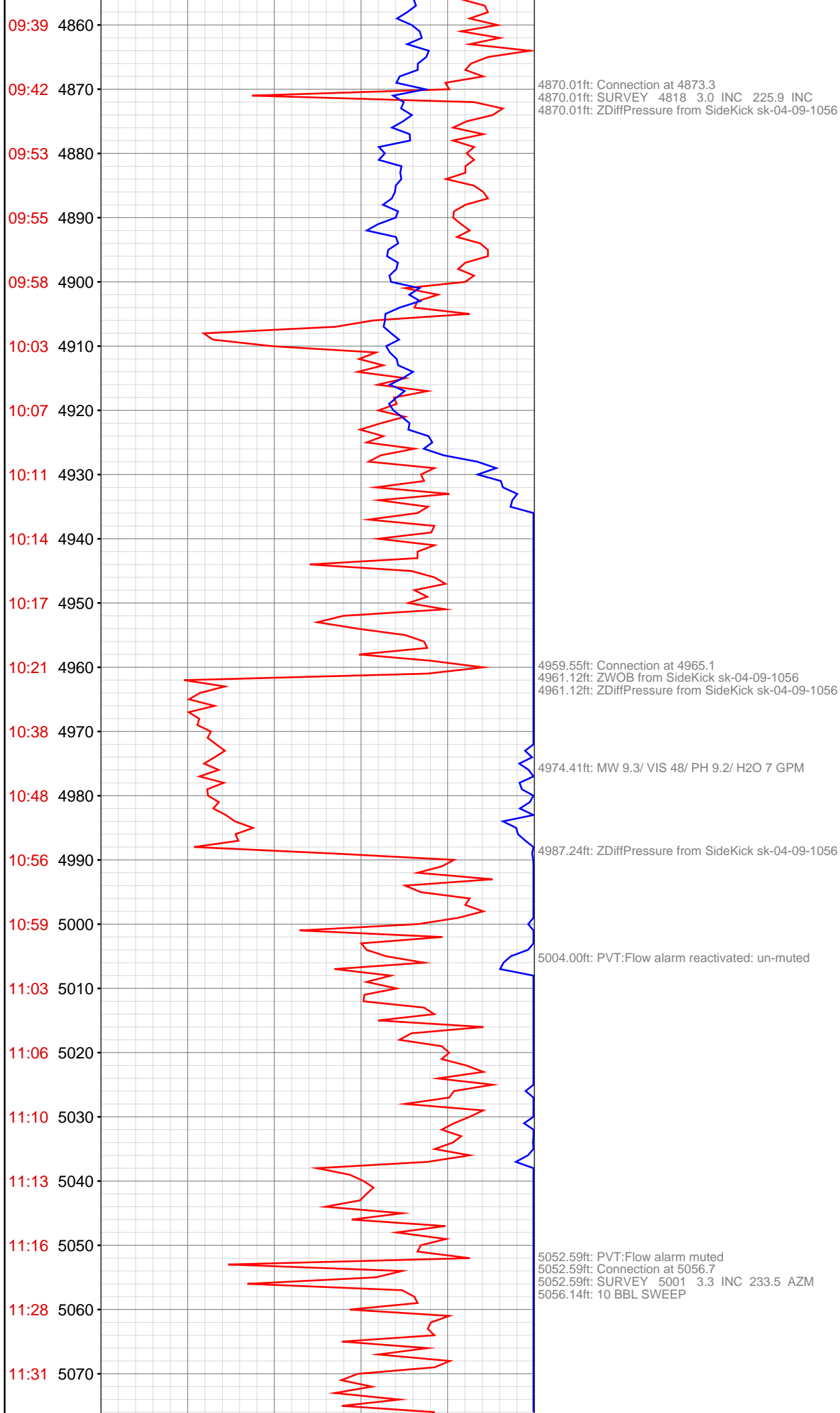
4089.37ft: ADD DEFOAMER

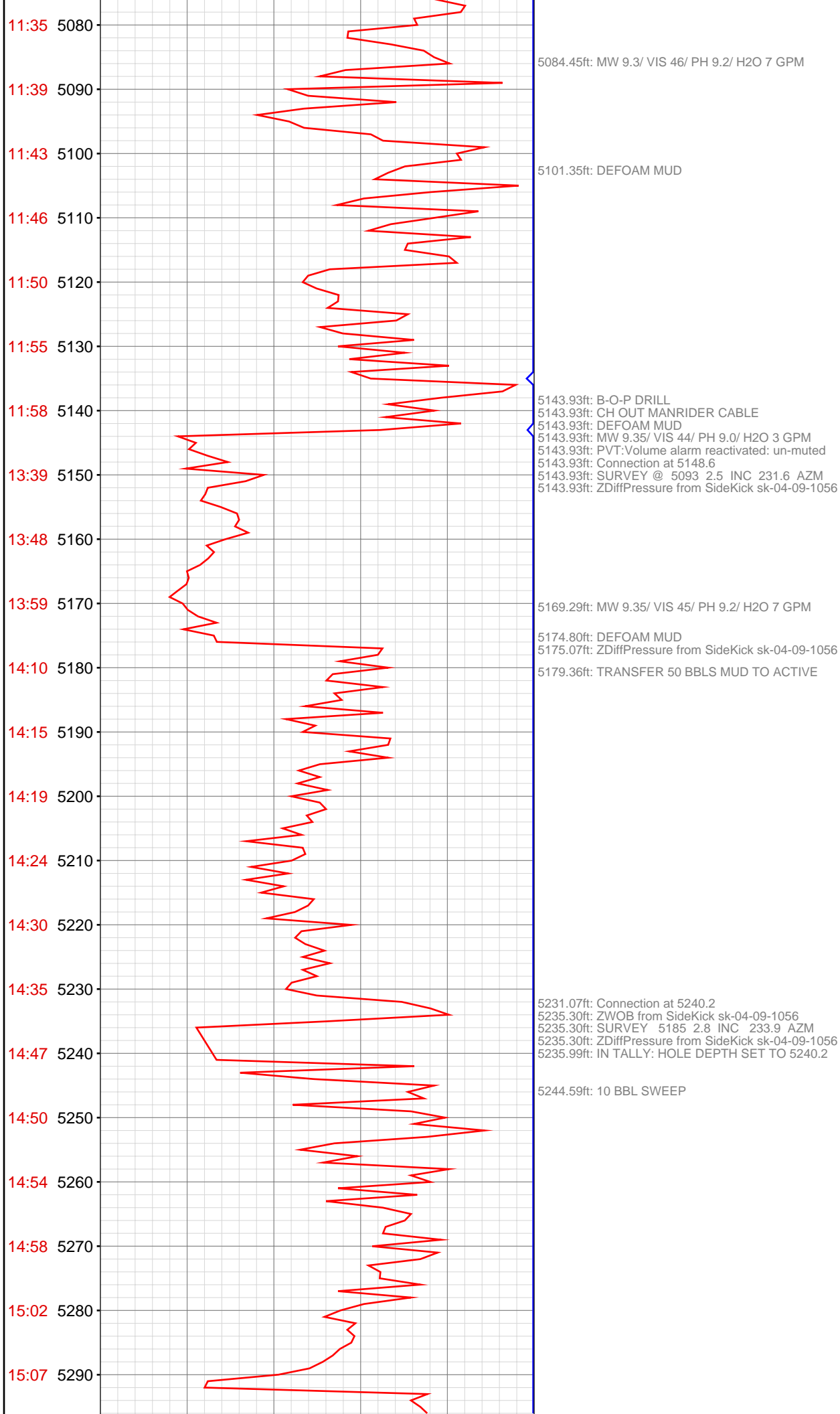
4139.27ft: PVT:Flow alarm snoozed 10 min
4139.27ft: Connection at 4140.8 SURVEY 4085 3.4 INC 225.2 AZI
4139.27ft: ZDiffPressure from SideKick sk-04-09-1056
4139.27ft: ZWOB from SideKick sk-04-09-1056
4143.21ft: PVT:Flow alarm reactivated: snooze expired
4143.21ft: ZERO ALL PUMPS from SideKick sk-06-03-3868
4143.70ft: PUMPED 10 BBLS SWEEP

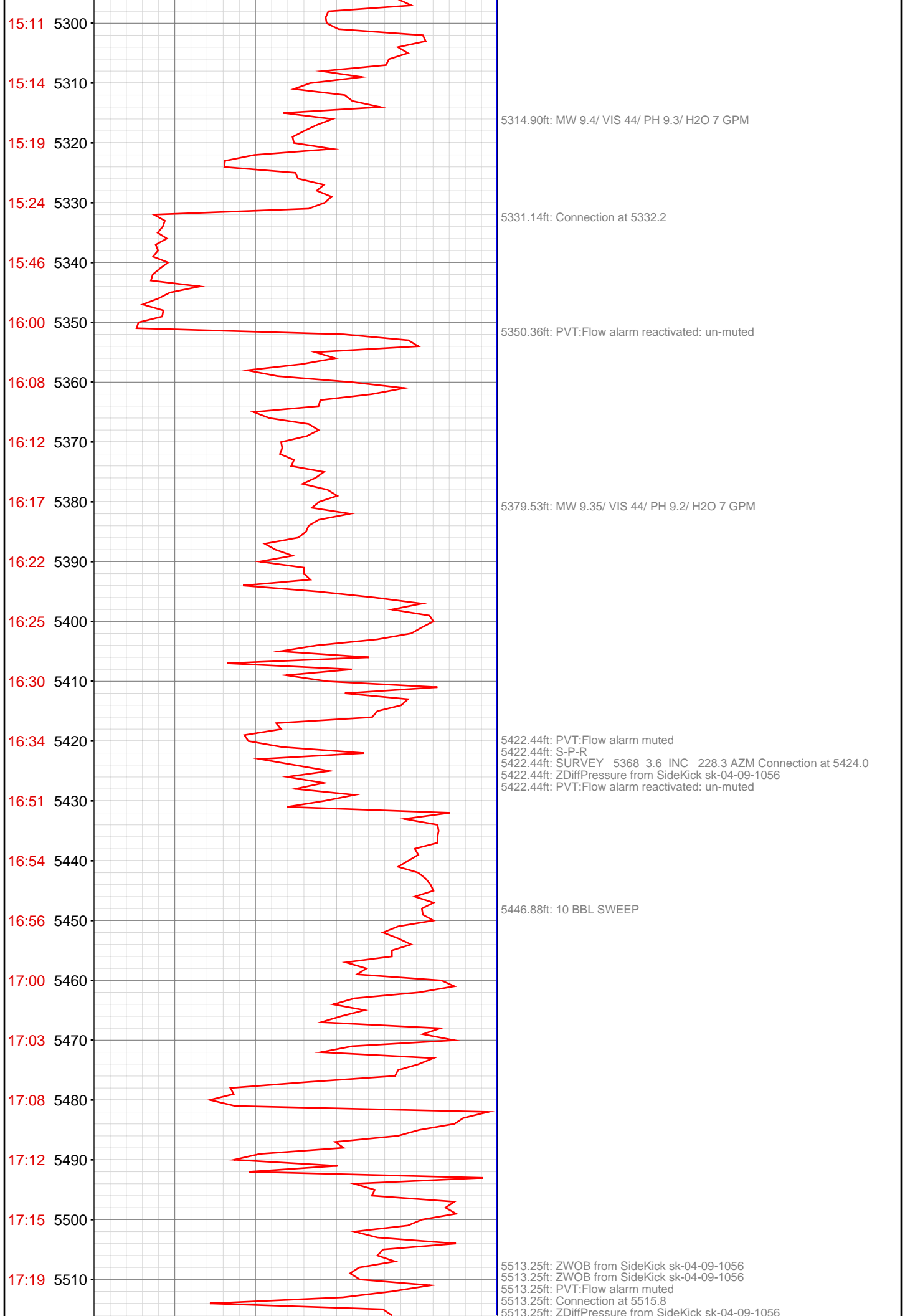












5513.25ft: SURVEY 5460 2.9 INC 223.0 AZI MW 9.35/ VIS 42/ PH 9.1/ H2O 7 GPM
5513.25ft: PVT:Flow alarm reactivated: un-muted

5529.69ft: DEFOAM MUD

5604.49ft: PVT:Flow alarm snoozed 10 min
5604.49ft: Connection at 5607.6
5604.49ft: SURVEY 5552 2.2 INC 209.9 AZI
5604.49ft: ZDiffPressure from SideKick sk-04-09-1056
5605.45ft: PVT:Flow alarm reactivated: snooze expired
5609.19ft: MW 9.4/ 44 VIS/ PH 9.3/ H2O 8 GPM

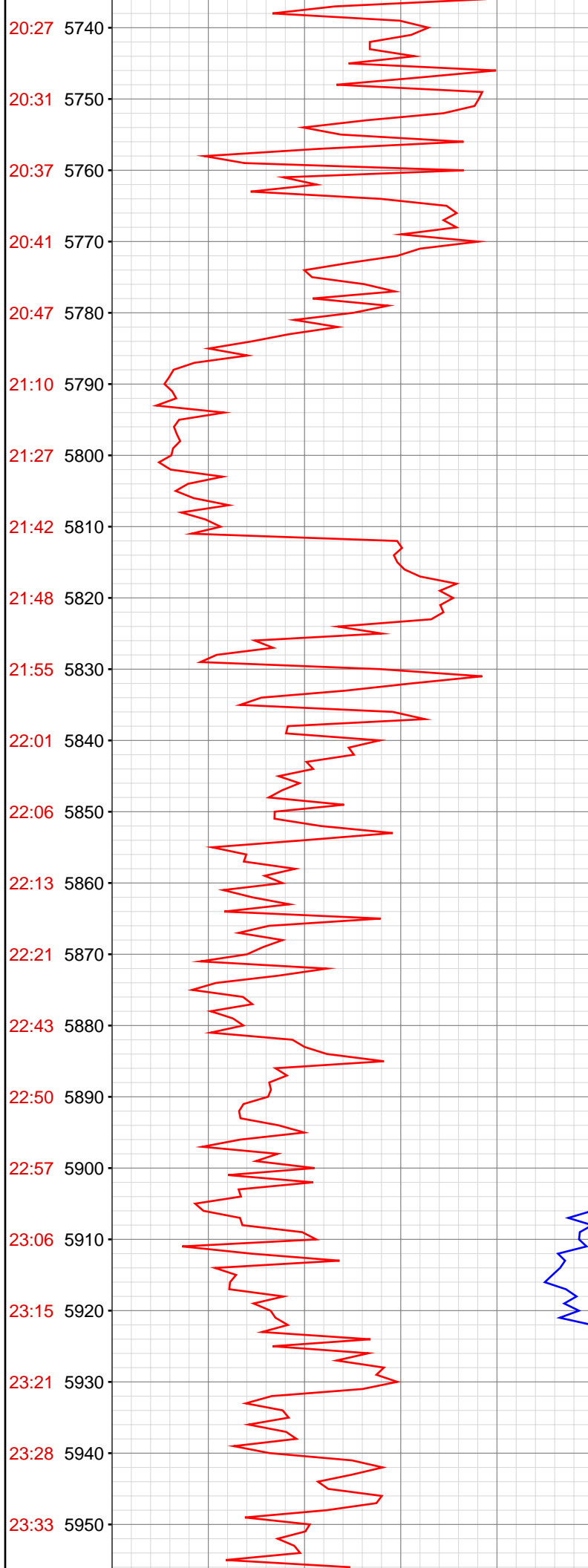
5631.69ft: ZDiffPressure from SideKick sk-04-09-1056

5637.66ft: ZERO ALL PUMPS from SideKick sk-06-03-3868
5638.48ft: PUMPED 15 BBLS SWEEP

5696.03ft: SURVEY 5644 3.1 INC 226.8 AZI
5696.03ft: Connection at 5699.2
5696.03ft: PVT:Flow alarm snoozed 10 min
5696.03ft: ZWOB from SideKick sk-04-09-1056
5696.03ft: ZDiffPressure from SideKick sk-04-09-1056
5700.62ft: ZERO ALL PUMPS from SideKick sk-06-03-3868
5700.82ft: PUMPED 15 BBLS SWEEP

5711.06ft: PVT:Flow alarm reactivated: snooze expired

5719.98ft: MW 9.4/ 42 VIS/ PH 9.3/ H2O 8 GPM



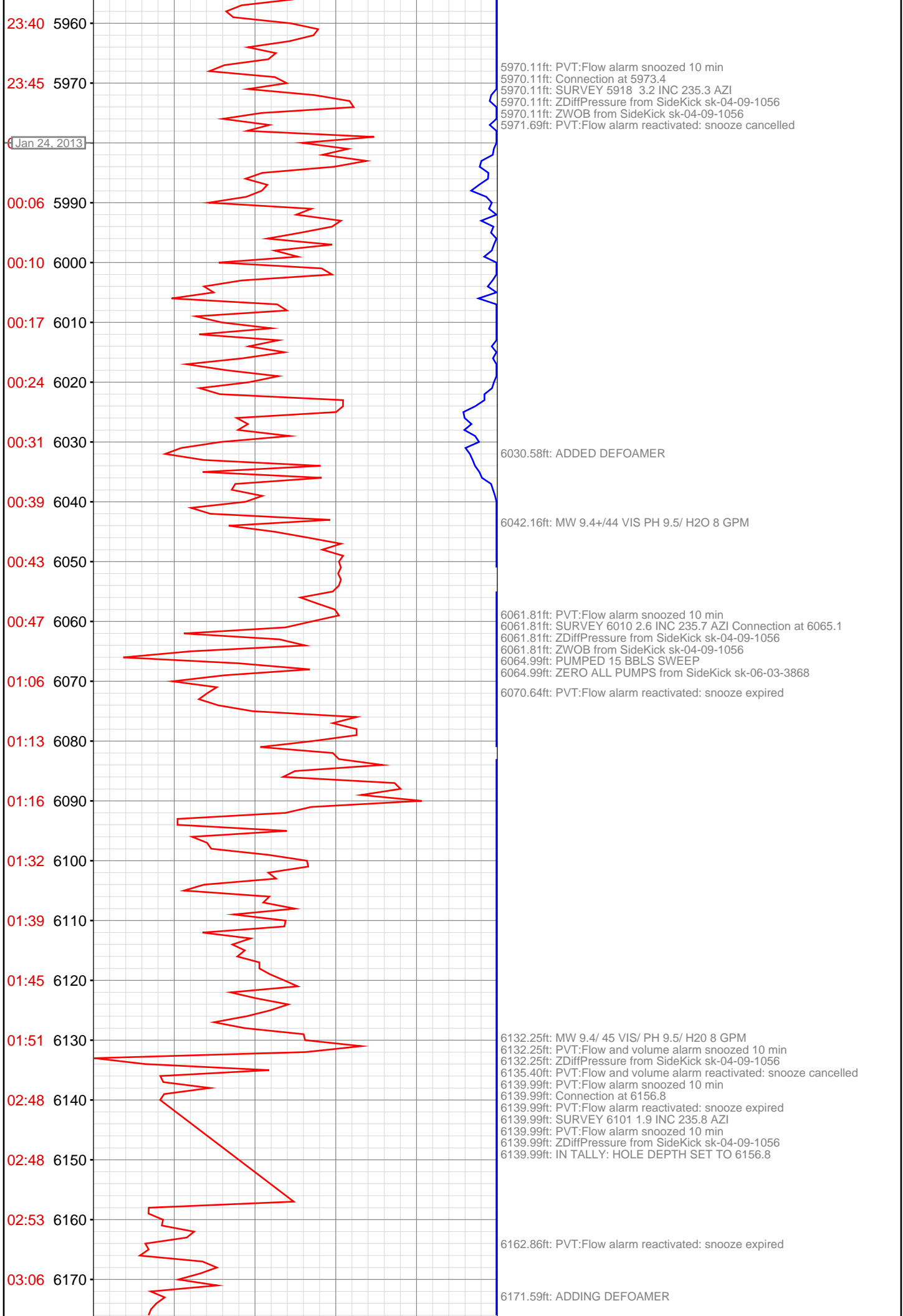
5787.34ft: Connection at 5791.0
5787.34ft: PVT:Flow alarm snoozed 10 min
5787.34ft: SURVEY 5735 2.2 INC 224.5 AZI
5787.34ft: ZDiffPressure from SideKick sk-04-09-1056
5787.34ft: PVT:Flow alarm reactivated: snooze cancelled
5792.49ft: MW 9.4+/ 46 VIS/ PH 9.4/ H2O 8 GPM
5793.73ft: POUMPING CELLAR

5816.67ft: ZERO ALL PUMPS from SideKick sk-06-03-3868
5817.68ft: PUMPED 15 BBLs SWEEP

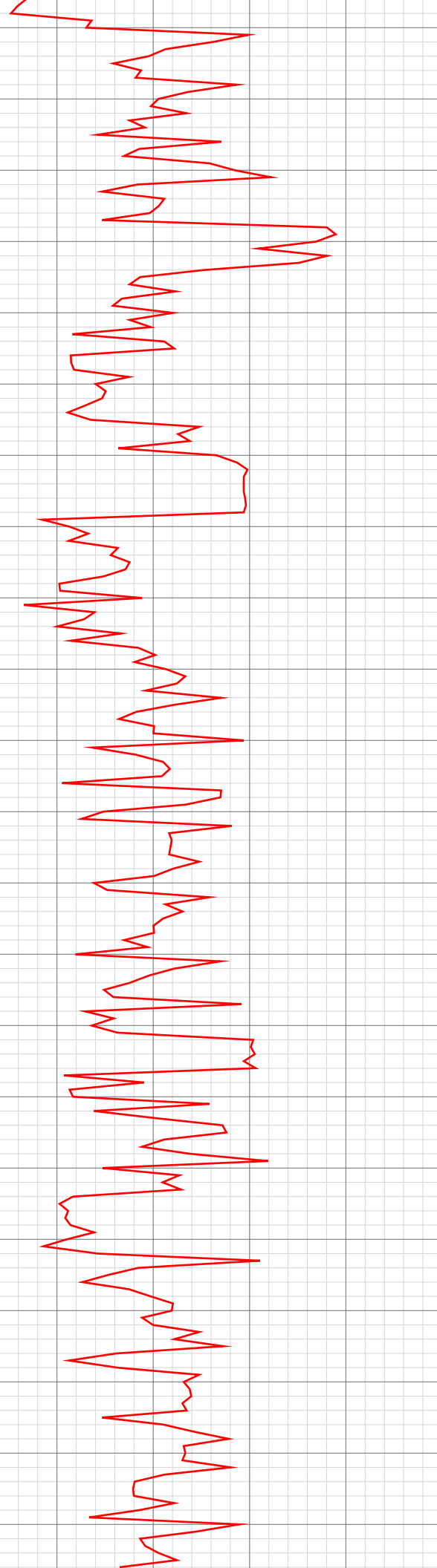
5878.87ft: PVT:Flow alarm snoozed 10 min
5878.87ft: MW 9.4/46 VIS PH 9.4/8 GPM
5878.87ft: PVT:Volume alarm snoozed 10 min
5878.87ft: SURVEY 5827 3.6 INC 236.7 AZI Connection at 5882.4
5878.87ft: PVT:Volume alarm reactivated: snooze expired
5878.87ft: ZWOB from SideKick sk-04-09-1056
5878.87ft: ZDiffPressure from SideKick sk-04-09-1056
5879.89ft: PVT:Flow alarm reactivated: snooze expired

5891.99ft: ZERO ALL PUMPS from SideKick sk-06-03-3868
5892.26ft: PUMPED 145 BBLs SWEEP

5947.80ft: MW 9.4+/44 VIS PH 9.5/ H2O 8 GPM



03:24 6180
03:30 6190
03:35 6200
03:40 6210
03:46 6220
03:55 6230
04:01 6240
04:15 6250
04:24 6260
04:34 6270
04:41 6280
04:48 6290
04:53 6300
04:59 6310
05:06 6320
05:13 6330
05:28 6340
05:37 6350
05:44 6360
05:50 6370
05:56 6380
06:02 6390



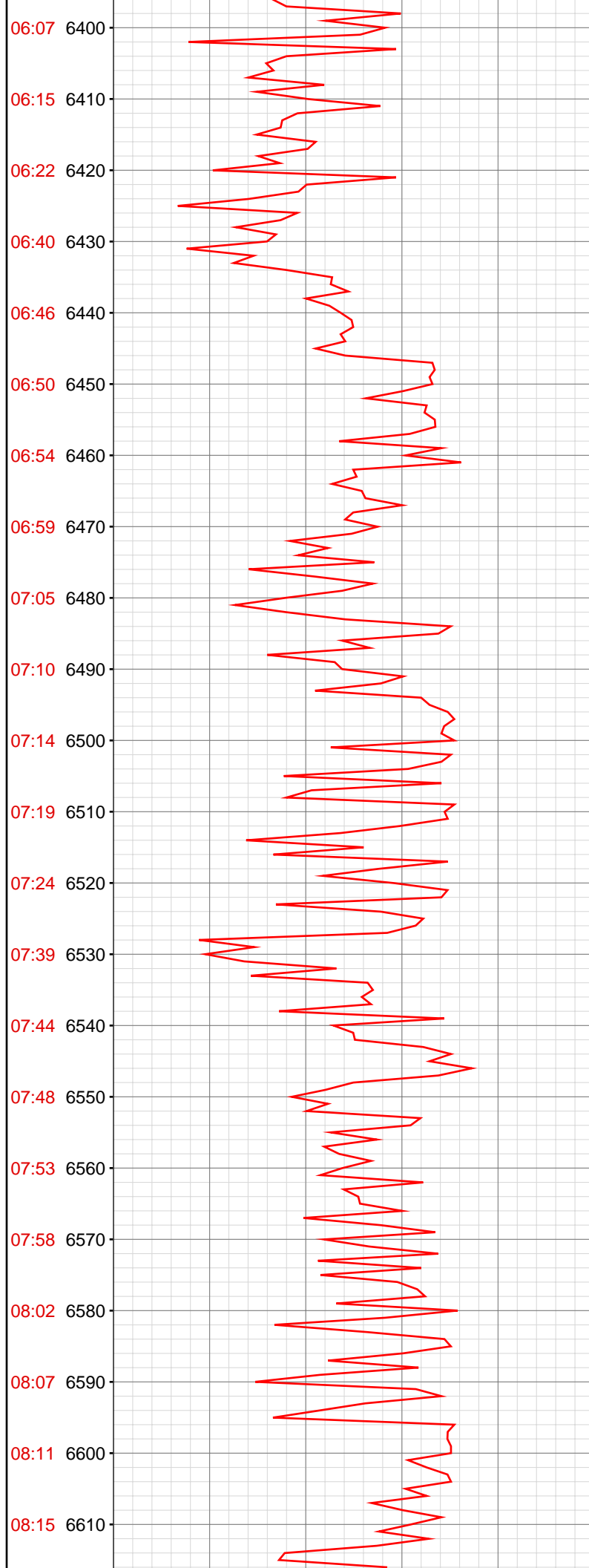
6179.10ft: MW 9.4+/44 VIS PH 9.5 / 8 GPM
6182.64ft: PUMPED 15 BBLS SWEEP
6182.64ft: ZERO ALL PUMPS from SideKick sk-06-03-3868

6248.20ft: PVT:Flow alarm snoozed 10 min
6248.20ft: Connection at 6248.6 SURVEY 6193 2.5 INC 235.4 AZI
6252.33ft: PVT:Flow alarm reactivated: snooze expired

6268.41ft: MW 9.4+/45 VIS PH 9.5 /H2O 6 GPM

6339.21ft: Connection at 6340.1
6339.21ft: PVT:Flow alarm snoozed 10 min
6339.21ft: Connection at 6340.1
6339.21ft: ZWOB from SideKick sk-04-09-1056
6339.21ft: ZDiffPressure from SideKick sk-04-09-1056
6343.18ft: ZERO ALL PUMPS from SideKick sk-06-03-3868
6343.27ft: 15 BBLS SWEEP
6344.65ft: PVT:Flow alarm reactivated: snooze expired

6393.31ft: WT 9.4+/ VIS 45/ PH 9.4/ H2O 6 GPM CENTRIFUGES OFF



6424.08ft: ZDiffPressure from SideKick sk-04-09-1056

6430.48ft: ZWOB from SideKick sk-04-09-1056

6430.48ft: PVT:Flow alarm muted

6430.48ft: Connection at 6432.0

6430.48ft: PVT:Flow alarm reactivated: un-muted

6452.79ft: ZERO ALL PUMPS from SideKick sk-06-03-3868

6463.16ft: WT 9.4+/ VIS 45/ PH 9.4/ H2O 6 GPM

6522.18ft: PVT:Flow alarm muted

6522.18ft: ZWOB from SideKick sk-04-09-1056

6522.18ft: FILL TRIP TANK 70 BBLs

6522.18ft: Connection at 6523.5

6522.18ft: SURVEY 6468 2.2 INC 230.9 AZM

6530.61ft: ZERO ALL PUMPS from SideKick sk-06-03-3868

6537.01ft: PVT:Flow alarm reactivated: un-muted

6576.41ft: WT 9.5/ VIS 45/ PH 9.5/ H2O 5 GPM

6613.98ft: PVT:Flow alarm snoozed 10 min

6613.98ft: Connection at 6615.2

6613.98ft: SURVEY 6560 1.6 INC 222.9 AZM

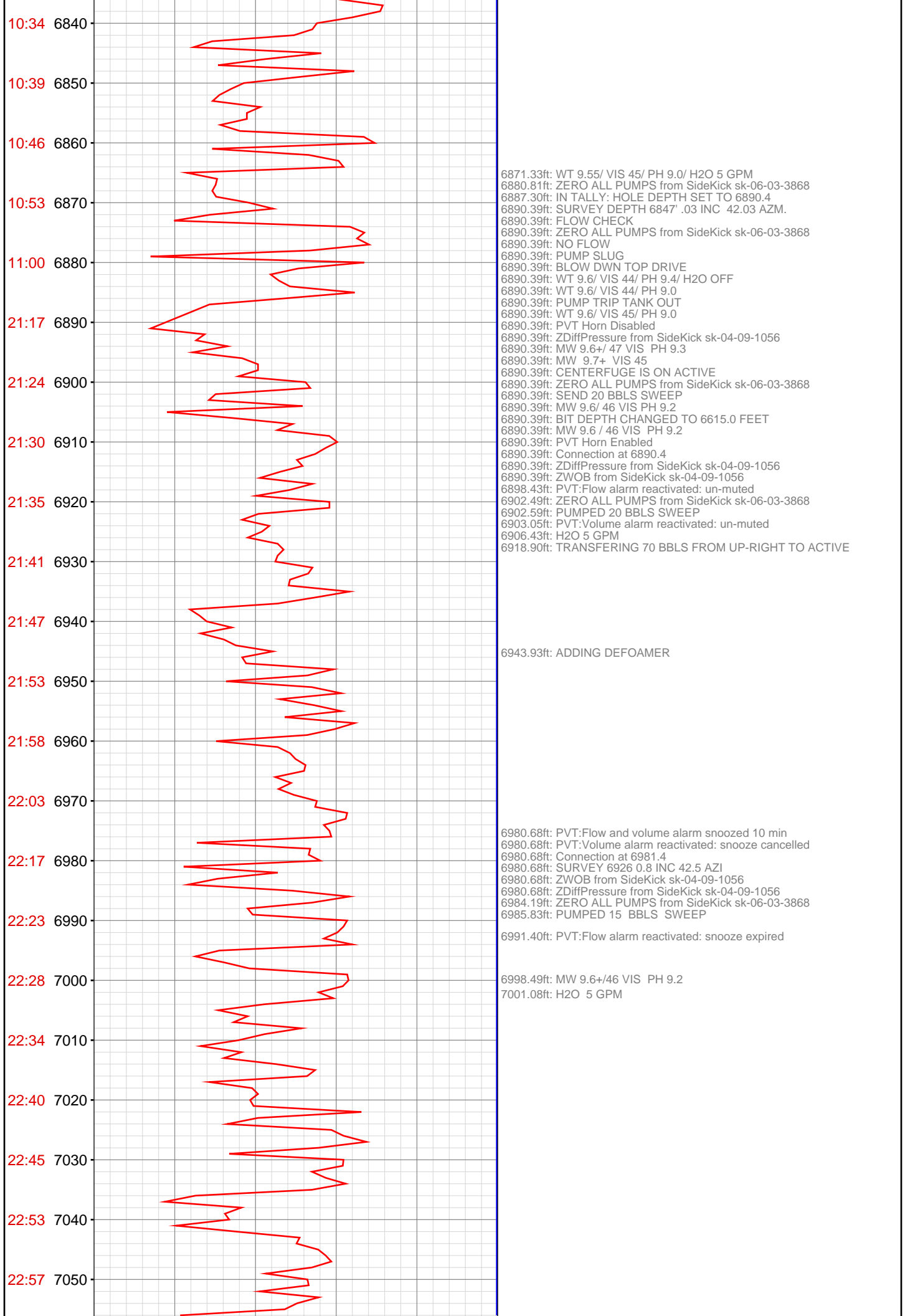
6613.98ft: PVT:Flow alarm reactivated: snooze cancelled
6613.98ft: PVT:Flow alarm snoozed 10 min
6619.36ft: ZERO ALL PUMPS from SideKick sk-06-03-3868
6622.34ft: PVT:Flow alarm reactivated: snooze expired

6705.05ft: PVT:Flow alarm muted
6705.05ft: ZWOB from SideKick sk-04-09-1056
6705.05ft: SURVEY 6651 1.0 INC 229.1 AZM Connection at 6706.9
6705.05ft: ZDiffPressure from SideKick sk-04-09-1056
6710.50ft: WT 9.5/ VIS 45/ PH 9.0/ H2O 5 GPM

6728.54ft: ZERO ALL PUMPS from SideKick sk-06-03-3868

6778.71ft: WT 9.55/ VIS 45/ PH 9.0/ H2O 5 GPM

6795.96ft: Connection at 6798.6
6795.96ft: SURVEY 6743 .5 INC 242.5 AZM
6795.96ft: ZWOB from SideKick sk-04-09-1056
6801.02ft: PUMP OUT CELLAR
6803.45ft: ZERO ALL PUMPS from SideKick sk-06-03-3868



23:03 7060
23:09 7070
23:23 7080
23:29 7090
23:34 7100
23:39 7110
23:45 7120
23:52 7130
23:59 7140
00:07 7150
00:13 7160
00:34 7170
00:48 7180
00:58 7190
01:04 7200
01:10 7210
01:13 7220
01:18 7230
01:23 7240
01:28 7250
01:44 7260
01:49 7270

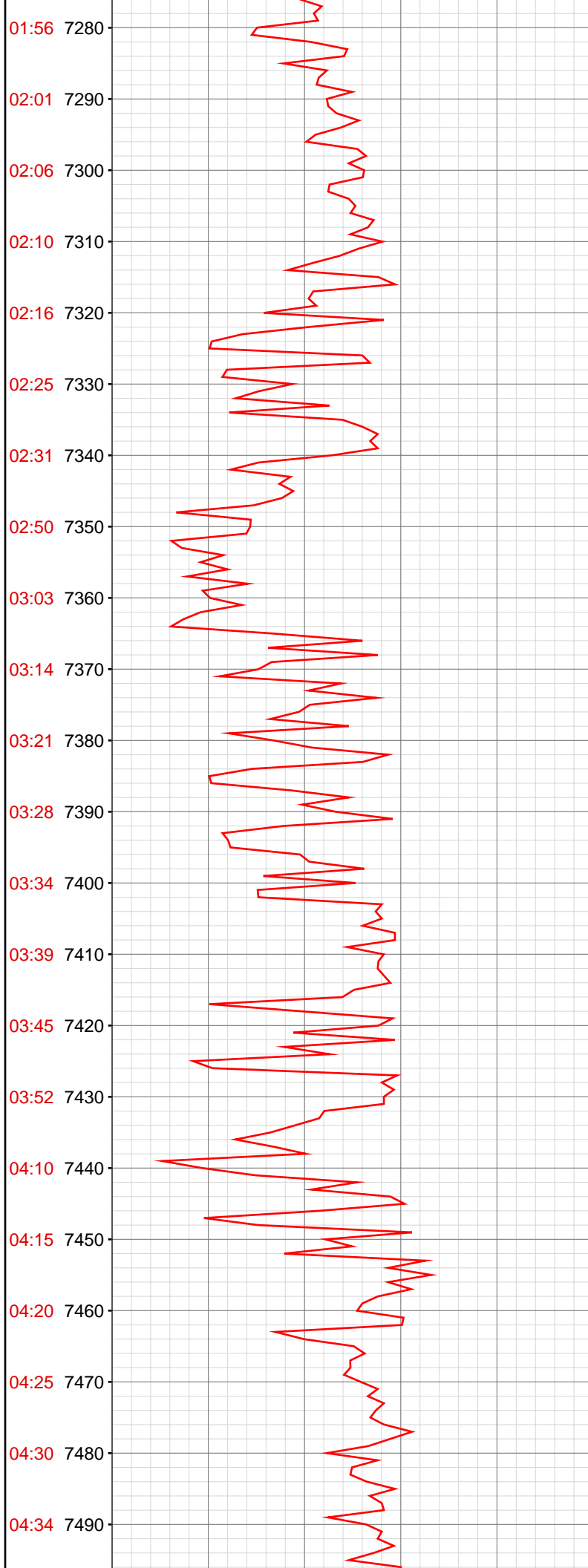
7072.34ft: PVT:Flow alarm snoozed 10 min
7072.34ft: Connection at 7072.9
7072.34ft: SURVEY 7017 1.0 INC 49.6 AZI
7072.34ft: ZWOB from SideKick sk-04-09-1056
7072.34ft: ZDiffPressure from SideKick sk-04-09-1056
7075.03ft: PVT:Flow alarm reactivated: snooze cancelled
7077.17ft: ZERO ALL PUMPS from SideKick sk-06-03-3868
7077.82ft: PUMPED 15 BBLs SWEEP

7125.62ft: MW 9.6+ / VIS 45 PH 9.5 / H2O 5 GPM

7163.85ft: PVT:Flow alarm snoozed 10 min
7163.85ft: Connection at 7164.3
7163.85ft: PVT:Flow alarm reactivated: snooze expired
7163.85ft: PVT:Flow alarm snoozed 10 min
7167.62ft: SURVEY 7109 1.5 INC 56.8 AZI
7170.57ft: PVT:Flow alarm reactivated: snooze expired
7173.29ft: MW 9.6+ / 46 VIS PH 9.5 / H2O 6 GPM

7188.16ft: ZDiffPressure from SideKick sk-04-09-1056
7192.91ft: PUMPED 15 BBLs SWEEP
7193.31ft: ZERO ALL PUMPS from SideKick sk-06-03-3868

7255.41ft: Connection at 7255.9
7255.41ft: SURVEY 7200 0.5 INC 37.8 AZI
7255.41ft: PVT:Flow alarm snoozed 10 min
7255.41ft: MW 9.7 / 46 VIS PH 9.5 / H2O 6 GPM
7255.41ft: ZDiffPressure from SideKick sk-04-09-1056
7255.41ft: ZWOB from SideKick sk-04-09-1056
7258.73ft: PVT:Flow alarm reactivated: snooze cancelled
7258.79ft: PUMPED 15 BBLs SWEEP
7258.99ft: ZERO ALL PUMPS from SideKick sk-06-03-3868
7260.53ft: PUMPED 5 BBLs SWEEP
7260.53ft: ZERO ALL PUMPS from SideKick sk-06-03-3868



7337.07ft: MW 9.7+/46 VIS PH 9.5 /H2O 6 GPM

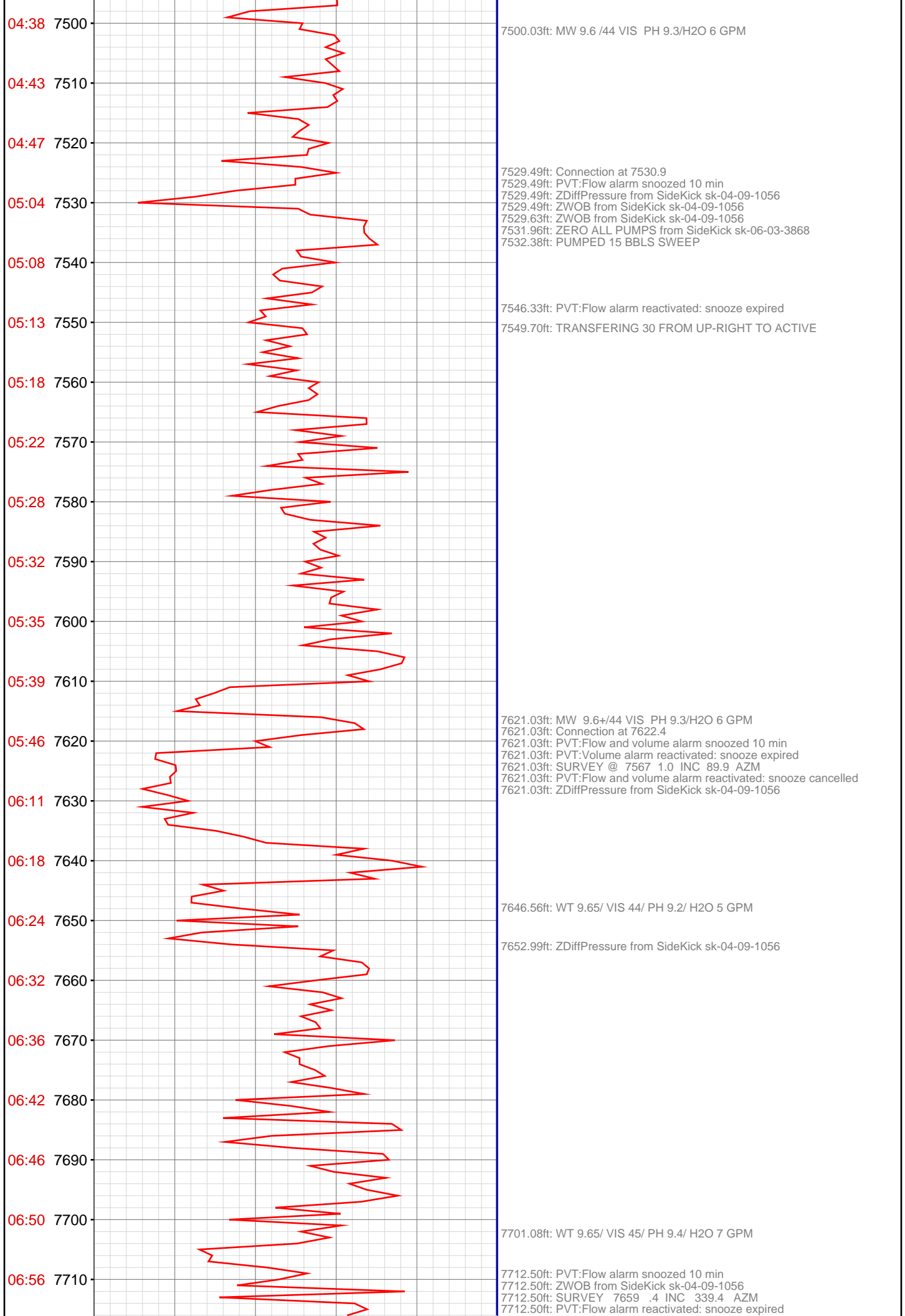
7340.75ft: CENTRIFUGE ON ACTIVE
7347.05ft: PVT:Flow alarm snoozed 10 min
7347.05ft: Connection at 7347.4
7347.05ft: PVT:Flow alarm reactivated: snooze expired
7347.05ft: PVT:Flow alarm snoozed 10 min
7347.05ft: SURVEY 7292 0.8 INC 29.2 AZI
7347.05ft: ZDiffPressure from SideKick sk-04-09-1056
7353.94ft: PVT:Flow alarm reactivated: snooze expired

7363.39ft: ZDiffPressure from SideKick sk-04-09-1056

7416.40ft: MW 9.6 /45 VIS PH 9.5 /H2O 6 GPM

7428.61ft: ADD DEFOAMER

7438.35ft: PVT:Flow alarm snoozed 10 min
7438.35ft: Connection at 7439.2
7438.35ft: SURVEY 7384 0.1 INC 100.0 AZI
7438.35ft: ZDiffPressure from SideKick sk-04-09-1056
7438.35ft: CENTRIFUGE OFF
7442.13ft: PVT:Flow alarm reactivated: snooze expired
7444.00ft: ZERO ALL PUMPS from SideKick sk-06-03-3868
7446.23ft: PUMPED 15 BBLS SWEEP



7712.50ft: Connection at 7714.1
7716.83ft: ZERO ALL PUMPS from SideKick sk-06-03-3868

7784.55ft: DEFOAM MUD

7803.97ft: PVT:Flow and volume alarm snoozed 10 min
7803.97ft: WT 9.6+/ VIS 45/ PH 9.4/ H2O 7 GPM
7803.97ft: SURVEY @ 7750 .8 INC 46.7 AZM Connection at 7805.9
7803.97ft: PVT:Flow and volume alarm reactivated: snooze expired
7803.97ft: ZDiffPressure from SideKick sk-04-09-1056

7837.66ft: ZERO ALL PUMPS from SideKick sk-06-03-3868

7887.76ft: WT 9.75/ VIS 45/ PH 9.3/ H2O 7 GPM

7895.54ft: Connection at 7897.8
7895.54ft: ZWOB from SideKick sk-04-09-1056
7895.54ft: PVT:Flow and volume alarm snoozed 10 min
7895.54ft: SURVEY 7842 .8 INC 108.7 AZM
7895.54ft: ZDiffPressure from SideKick sk-04-09-1056

7904.27ft: ZERO ALL PUMPS from SideKick sk-06-03-3868

7907.32ft: PVT:Flow and volume alarm reactivated: snooze expired

