

ConocoPhillips Company

CONSTRUCTION LAYOUT FOR

TEBO #4-1H
SECTION 4, T5S, R64W, 6th P.M.
900' FSL 250' FWL

FIGURE #1

SCALE: 1" = 60'

DATE: 02-18-13

DRAWN BY: S.S.

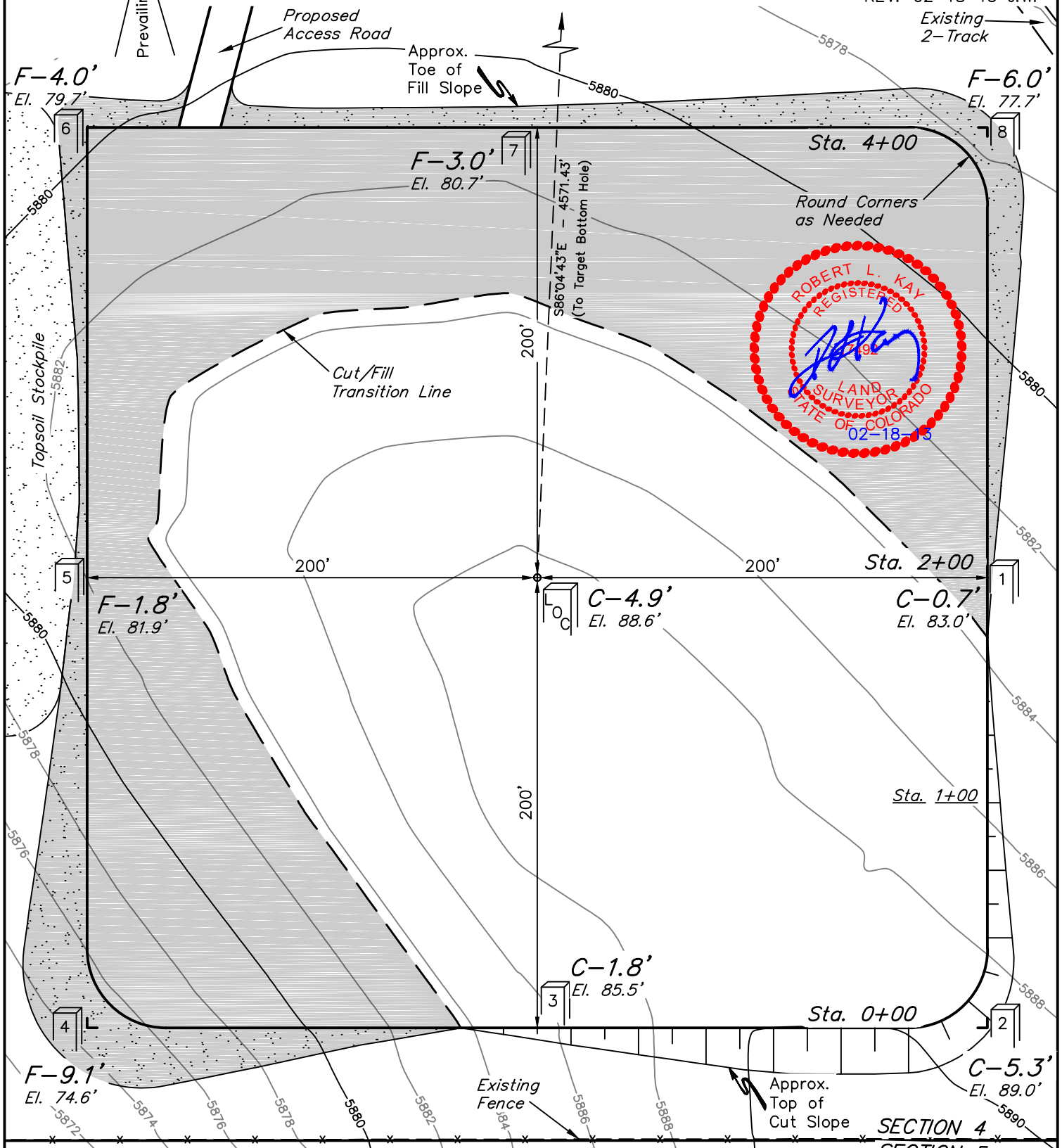
REV: 09-21-12 J.W.

REV: 10-09-12 J.W.

REV: 10-12-12 J.W.

REV: 02-18-13 J.W.

Existing
2-Track



Elev. Ungraded Ground At Loc. Stake = 5888.6'
FINISHED GRADE ELEV. AT LOC. STAKE = 5883.7'

UINTAH ENGINEERING & LAND SURVEYING
85 So. 200 East * Vernal, Utah 84078 * (435) 789-1017

ConocoPhillips Company

FIGURE #2

CONSTRUCTION LAYOUT CROSS SECTIONS FOR

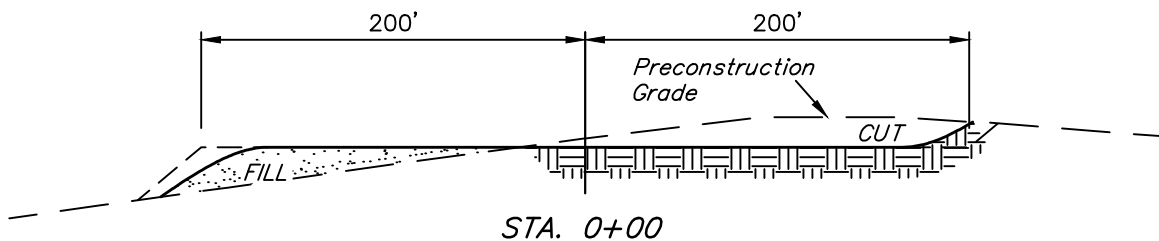
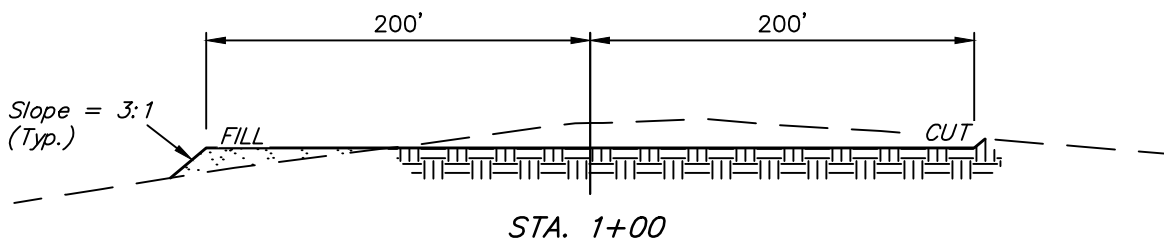
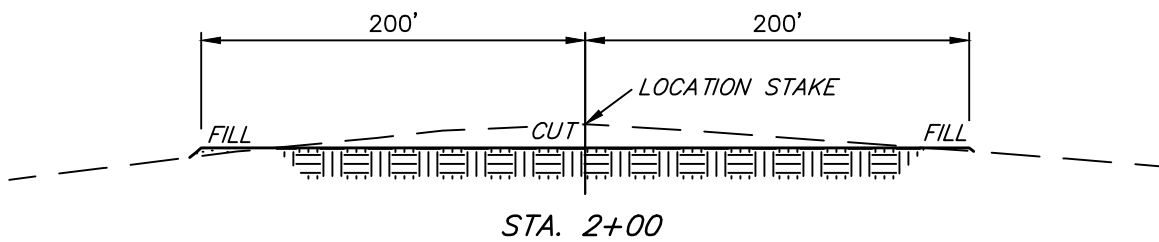
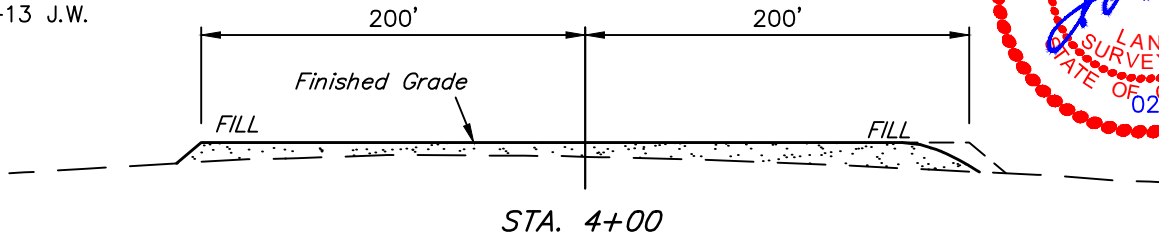
TEBO #4-1H

SECTION 4, T5S, R64W, 6th P.M.

900' FSL 250' FWL

1" = 20'
X-Section
Scale
1" = 50'

DATE: 03-15-12
DRAWN BY: S.S.
REV: 09-21-12 J.W.
REV: 10-09-12 J.W.
REV: 02-18-13 J.W.



NOTE:

Topsoil should not be Stripped Below Finished Grade on Substructure Area.

APPROXIMATE ACREAGES

WELL SITE DISTURBANCE = ± 4.422 ACRES
ACCESS ROAD DISTURBANCE = ± 1.154 ACRES
TOTAL = ± 5.576 ACRES

* NOTE:
FILL QUANTITY INCLUDES 5% FOR COMPACTION

APPROXIMATE YARDAGES

(6") Topsoil Stripping = 3,320 Cu. Yds.
Remaining Location = 8,820 Cu. Yds.
TOTAL CUT = 12,140 CU. YDS.
FILL = 8,820 CU. YDS.

EXCESS MATERIAL = 3,320 Cu. Yds.
Topsoil = 3,320 Cu. Yds.
EXCESS UNBALANCE = 0 Cu. Yds.
(After Interim Rehabilitation)

UINTAH ENGINEERING & LAND SURVEYING
85 So. 200 East * Vernal, Utah 84078 * (435) 789-1017