

ConocoPhillips Company

TEBO #4-1H

LOCATED IN ARAPAHOE COUNTY, COLORADO

SECTION 4, T5S, R64W, 6th P.M.



PHOTO: VIEW OF REFERENCE AREA

CAMERA ANGLE: NORTHERLY



PHOTO: VIEW OF REFERENCE AREA

CAMERA ANGLE: EASTERLY



- Since 1964 -

UELS

Uintah Engineering & Land Surveying

85 South 200 East Vernal, Utah 84078
(435) 789-1017 * FAX (435) 789-1813

REFERENCE AREA
PHOTOS

03 08 12
MONTH DAY YEAR

TAKEN BY: D.L.S. DRAWN BY: J.L.G. REV: 02-15-13 J.L.H.

PHOTO
REF 1

ConocoPhillips Company

TEBO #4-1H

LOCATED IN ARAPAHOE COUNTY, COLORADO

SECTION 4, T5S, R64W, 6th P.M.



PHOTO: VIEW OF REFERENCE AREA

CAMERA ANGLE: SOUTHERLY

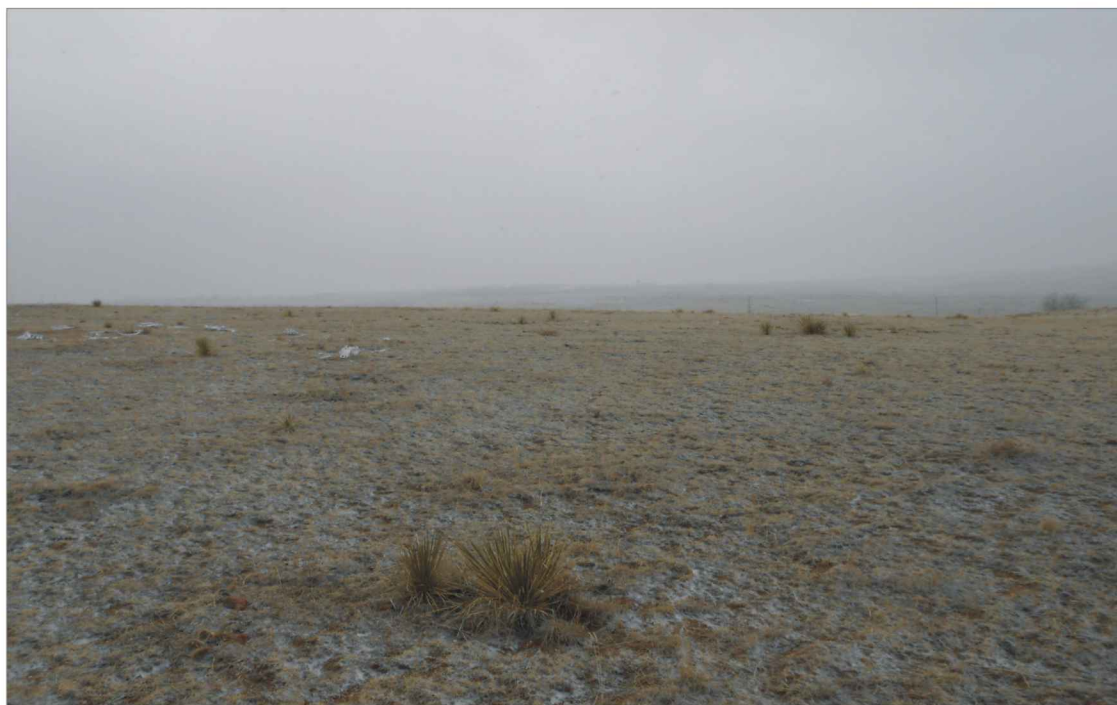


PHOTO: VIEW OF REFERENCE AREA

CAMERA ANGLE: WESTERLY



- Since 1964 -

U
E
L
S

Uintah Engineering & Land Surveying

85 South 200 East Vernal, Utah 84078
(435) 789-1017 * FAX (435) 789-1813

REFERENCE AREA
PHOTOS

03 08 12
MONTH DAY YEAR

TAKEN BY: D.L.S. DRAWN BY: J.L.G. REV: 02-15-13 J.L.H.

PHOTO
REF2