

# ConocoPhillips Company

## LOCATION DRAWING FOR

TEBO #4-1H  
SECTION 4, T5S, R64W, 6th P.M.  
900' FSL 250' FWL

FIGURE #4



1996, 3" Private Alum. Cap,  
Flush with Ground,  
LS25775,  
Lat: 39.645036°  
Long: 104.566189°

1/4 Section Line

4



SCALE

DATE: 03-15-12  
DRAWN BY: S.S.  
REV: 10-01-12 J.W.  
REV: 10-09-12 J.W.  
REV: 02-18-13 J.W.

### FEATURE TABLE

EXISTING FEATURE	DIRECTION	LENGTH
PUBLIC ROAD(E. Quincy Ave.)	SOUTH	885'
RAILROAD	N11°W	39392'
PROPERTY LINE	WEST	250'
SURFACE WATER - POND	N75°W	3663'
EXISTING POWERLINE	S18°E	336'
BUILDING	S60°W	786'

S01°24'37"W - 2639.28' (Meas.)

Section Line

1/16 Section Line

SW 1/4 1/16 Section Line

Property Line

PROPOSED  
TEBO #4-1H  
WELL PAD

Proposed  
Access Road

STEVEN D.  
TEBO

Existing  
Overhead  
Power

Existing  
Fenceline

1/4 Section Line

2010, 3.25" Private  
Alum. Cap,  
0.5' Below Ground,  
LS33200,  
Lat: 39.637572°  
Long: 104.547600°

2010, 3.25" Private Alum. Cap,  
0.5' Below Ground,  
LS33200  
Lat: 39.637797°  
Long: 104.566414°

Existing E. Quincy Avenue

Section Line

S89°05'17"E - 5300.87' (Meas.)

### PLANT COMMUNITY

- ☐ DISTURBED GRASSLAND
- ☐ NATIVE GRASSLAND
- ☐ SHRUB LAND
- ☐ PLAINS RIPARIAN
- ☐ MOUNTAIN RIPARIAN
- ☐ FOREST LAND
- ☐ WETLANDS AQUATIC
- ☐ ALPINE
- ☐ OTHER (Describe): \_\_\_\_\_

### CURRENT LAND USE

- CROP LAND: ☐ IRRIGATED ☐ DRY LAND ☐ IMPROVED PASTURE ☐ HAY MEADOW ☐ CRP
- NON-CROP LAND: ☐ RANGELAND ☐ TIMBER ☐ RECREATIONAL ☐ OTHER (Describe) \_\_\_\_\_
- SUBDIVIDED: ☐ INDUSTRIAL ☐ COMMERCIAL ☐ RESIDENTIAL

### FUTURE LAND USE

- CROP LAND: ☐ IRRIGATED ☐ DRY LAND ☐ IMPROVED PASTURE ☐ HAY MEADOW ☐ CRP
- NON-CROP LAND: ☐ RANGELAND ☐ TIMBER ☐ RECREATIONAL ☐ OTHER (Describe) \_\_\_\_\_
- SUBDIVIDED: ☐ INDUSTRIAL ☐ COMMERCIAL ☐ RESIDENTIAL

# ConocoPhillips Company

## LOCATION DRAWING DETAIL FOR

TEBO #4-1H

SECTION 4, T5S, R64W, 6th P.M.

900' FSL 250' FWL

**FIGURE #4A**

SCALE: 1" = 200'

DATE: 03-15-12

DRAWN BY: S.S.

REV: 09-21-12 J.W.

REV: 10-09-12 J.W.

REV: 02-18-13 J.W.



LINE TABLE

LINE	DIRECTION	LENGTH
L1	N48°E	13'
L2	N48°E	339'
L3	S35°E	38'
L4	S18°E	74'
L5	S35°E	322'

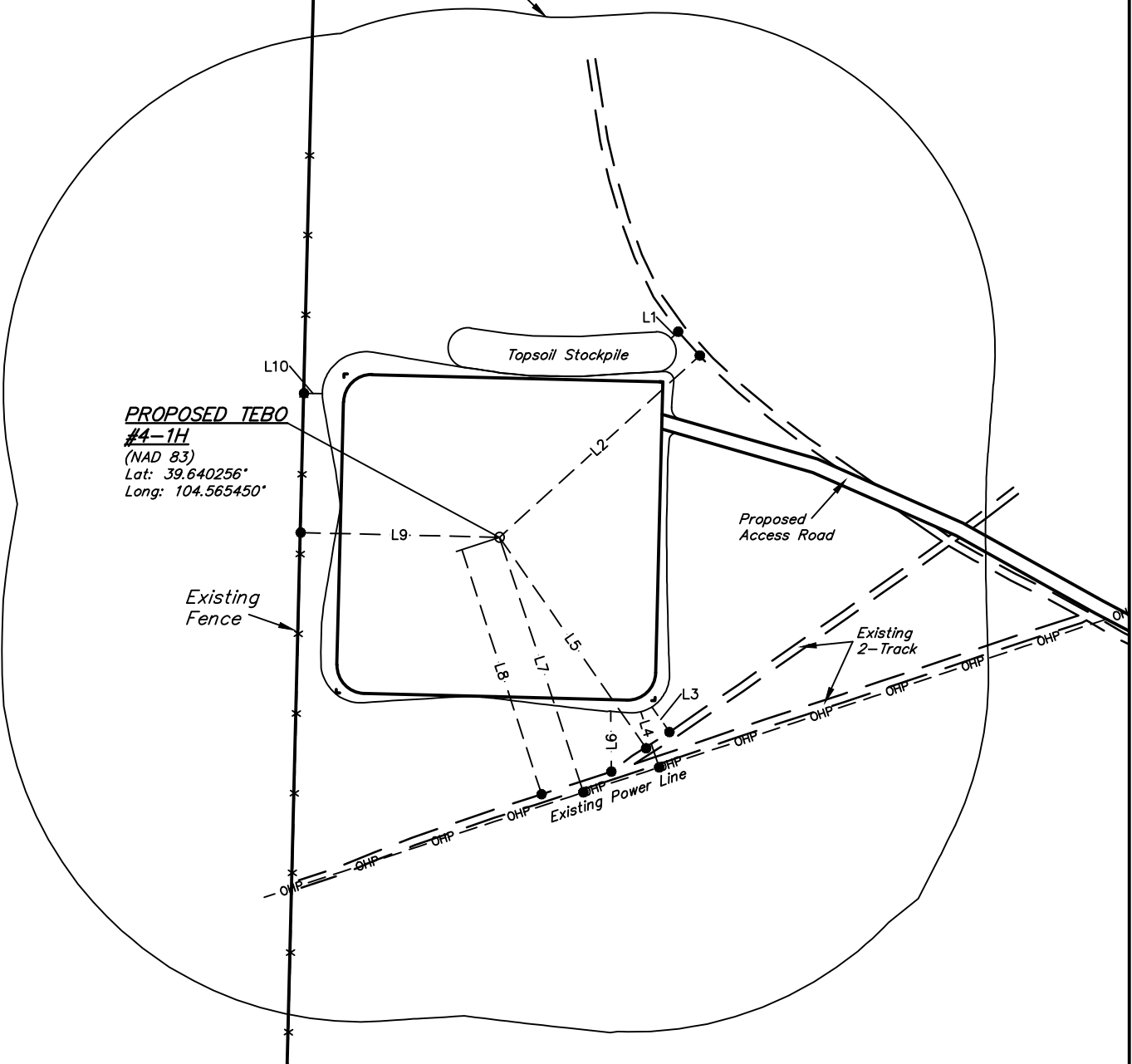
LINE TABLE

LINE	DIRECTION	LENGTH
L6	S01°E	76'
L7	S18°E	337'
L8	S18°E	323'
L9	N89°W	249'
L10	N89°W	23'



SECTION 5  
SECTION 4

400' Offset  
from Edge of  
Disturbance



UINTAH ENGINEERING & LAND SURVEYING

85 So. 200 East \* Vernal, Utah 84078 \* (435) 789-1017