

Location:	COLORADO	Slot:	SLOT#18 POWERS 4N-27HZ (510' FSL & 570' FWL, SEC.27)
Field:	WELD COUNTY (KERR MCGEE)	Well:	POWERS 4N-27HZ
Facility:	SEC.27-T2N-R65W	Wellbore:	POWERS 4N-27HZ PWB

Plot reference wellpath is POWERS 4N-27HZ (REV-D.0) PWP

True vertical depths are referenced to ENSIGN 138 (RKB)

Measured depths are referenced to ENSIGN 138 (RKB)

ENSIGN 138 (RKB) to Mean Sea Level: 4948 feet

Mean Sea Level to Mud line (At Slot: SLOT#18 POWERS 4N-27HZ (510' FSL & 570' FWL, SEC.27)): 0 feet

Coordinates are in feet referenced to Slot

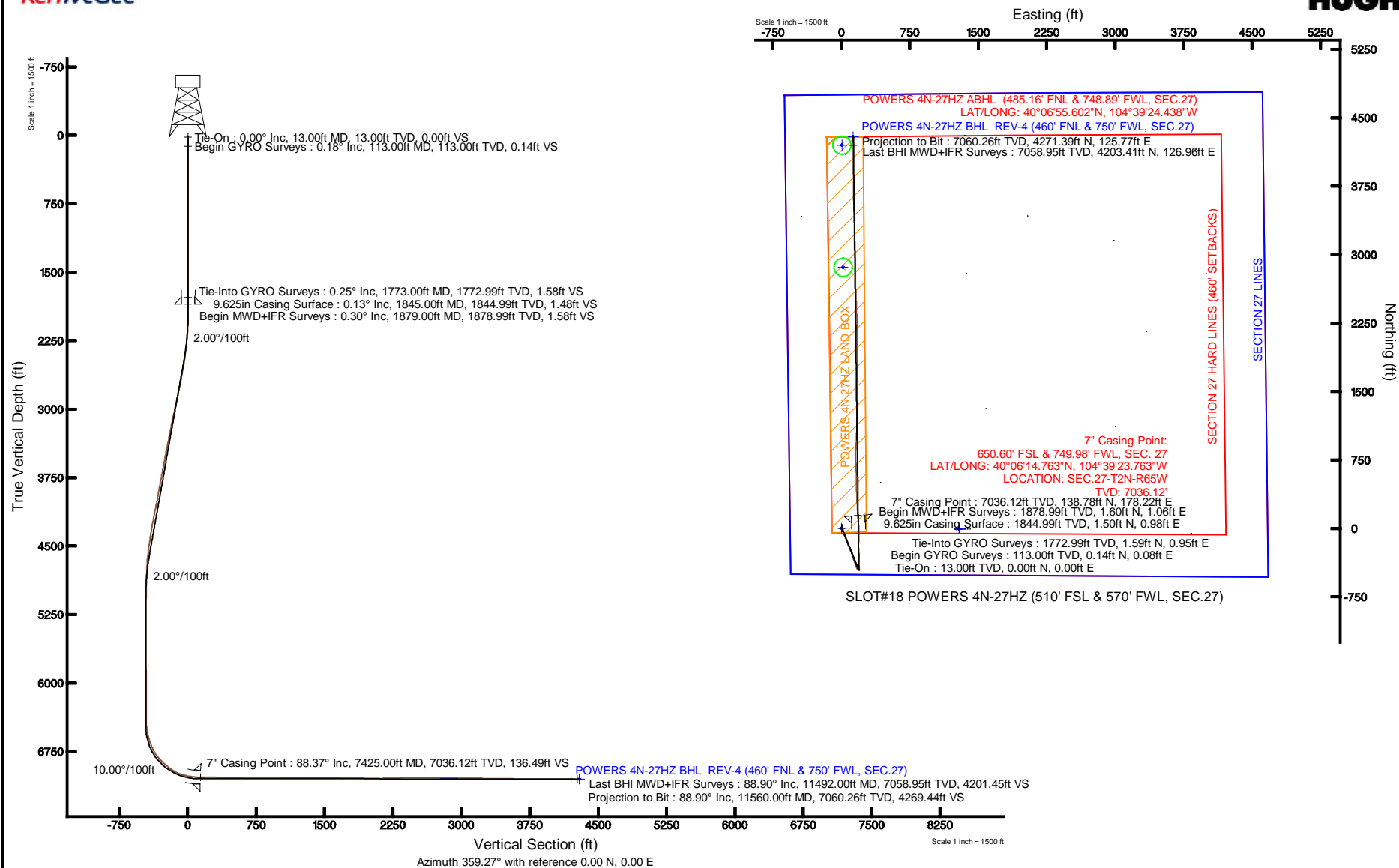
Grid System: NAD83 / Lambert Colorado SP. Northern Zone (501). US feet

North Reference: True north

Scale: True distance

Depths are in feet

Created by: precain on 4/2/2013





Actual Wellpath Report

POWERS 4N-27HZ AWP

Page 1 of 6



REFERENCE WELLPATH IDENTIFICATION			
Operator	KERR-MCGEE OIL & GAS ONSHORE LP	Slot	SLOT#18 POWERS 4N-27HZ (510' FSL & 570' FWL, SEC.27)
Area	COLORADO	Well	POWERS 4N-27HZ
Field	WELD COUNTY (KERR MCGEE)	Wellbore	POWERS 4N-27HZ AWB
Facility	SEC.27-T2N-R65W		

REPORT SETUP INFORMATION			
Projection System	NAD83 / Lambert Colorado SP, Northern Zone (501), US feet	Software System	WellArchitect® 3.0.2
North Reference	True	User	Precain
Scale	0.99996	Report Generated	4/3/2013 at 8:53:00 AM
Convergence at slot	0.54° East	Database/Source file	WellArchitectDB/POWERS_4N-27HZ_AWB.xml

WELLPATH LOCATION						
	Local coordinates		Grid coordinates		Geographic coordinates	
	North[ft]	East[ft]	Easting[US ft]	Northing[US ft]	Latitude	Longitude
Slot Location	7.72	-1290.30	3235740.15	1281749.77	40°06'13.392"N	104°39'26.057"W
Facility Reference Pt			3237030.41	1281754.37	40°06'13.316"N	104°39'09.452"W
Field Reference Pt			3197771.84	1268891.29	40°04'09.600"N	104°47'36.000"W

WELLPATH DATUM			
Calculation method	Minimum curvature	ENSIGN 138 (RKB) to Facility Vertical Datum	4948.00ft
Horizontal Reference Pt	Slot	ENSIGN 138 (RKB) to Mean Sea Level	4948.00ft
Vertical Reference Pt	ENSIGN 138 (RKB)	ENSIGN 138 (RKB) to Mud Line at Slot (SLOT#18 POWERS 4N-27HZ (510' FSL & 570' FWL, SEC.27))	4948.00ft
MD Reference Pt	ENSIGN 138 (RKB)	Section Origin	N 0.00, E 0.00 ft
Field Vertical Reference	Mean Sea Level	Section Azimuth	359.27°



Actual Wellpath Report

POWERS 4N-27HZ AWP

Page 2 of 6



REFERENCE WELLPATH IDENTIFICATION

Operator	KERR-MCGEE OIL & GAS ONSHORE LP	Slot	SLOT#18 POWERS 4N-27HZ (510' FSL & 570' FWL, SEC.27)
Area	COLORADO	Well	POWERS 4N-27HZ
Field	WELD COUNTY (KERR MCGEE)	Wellbore	POWERS 4N-27HZ AWB
Facility	SEC.27-T2N-R65W		

WELLPATH DATA (119 stations) † = interpolated/extrapolated station

MD [ft]	Inclination [°]	Azimuth [°]	TVD [ft]	Vert Sect [ft]	North [ft]	East [ft]	Latitude	Longitude	DLS [°/100ft]	Comments
0.00†	0.000	28.670	0.00	0.00	0.00	0.00	40°06'13.392"N	104°39'26.057"W	0.00	
13.00	0.000	28.670	13.00	0.00	0.00	0.00	40°06'13.392"N	104°39'26.057"W	0.00	Tie-On
113.00	0.180	28.670	113.00	0.14	0.14	0.08	40°06'13.393"N	104°39'26.056"W	0.18	Begin GYRO Surveys
213.00	0.330	87.240	213.00	0.28	0.29	0.44	40°06'13.395"N	104°39'26.051"W	0.28	
313.00	0.100	259.030	313.00	0.28	0.29	0.64	40°06'13.395"N	104°39'26.049"W	0.43	
413.00	0.450	343.040	413.00	0.64	0.65	0.44	40°06'13.398"N	104°39'26.051"W	0.45	
513.00	0.230	58.270	513.00	1.12	1.13	0.50	40°06'13.403"N	104°39'26.051"W	0.45	
613.00	0.260	267.400	613.00	1.22	1.22	0.44	40°06'13.404"N	104°39'26.051"W	0.47	
713.00	0.100	108.490	713.00	1.18	1.18	0.30	40°06'13.404"N	104°39'26.053"W	0.36	
813.00	0.260	301.170	813.00	1.27	1.27	0.19	40°06'13.405"N	104°39'26.055"W	0.36	
913.00	0.260	133.360	912.99	1.23	1.24	0.16	40°06'13.404"N	104°39'26.055"W	0.52	
1013.00	0.170	315.760	1012.99	1.18	1.19	0.22	40°06'13.404"N	104°39'26.054"W	0.43	
1113.00	0.210	108.190	1112.99	1.23	1.24	0.29	40°06'13.404"N	104°39'26.053"W	0.37	
1213.00	0.120	333.750	1212.99	1.27	1.27	0.42	40°06'13.405"N	104°39'26.052"W	0.31	
1313.00	0.260	103.450	1312.99	1.31	1.31	0.59	40°06'13.405"N	104°39'26.049"W	0.35	
1413.00	0.250	349.990	1412.99	1.47	1.48	0.77	40°06'13.407"N	104°39'26.047"W	0.43	
1513.00	0.160	166.950	1512.99	1.54	1.55	0.77	40°06'13.407"N	104°39'26.047"W	0.41	
1613.00	0.230	55.780	1612.99	1.52	1.53	0.96	40°06'13.407"N	104°39'26.045"W	0.32	
1713.00	0.120	297.080	1712.99	1.68	1.69	1.04	40°06'13.409"N	104°39'26.044"W	0.31	
1773.00	0.250	191.500	1772.99	1.58	1.59	0.95	40°06'13.408"N	104°39'26.045"W	0.51	Tie-Into GYRO Surveys
1879.00	0.300	32.900	1878.99	1.58	1.60	1.06	40°06'13.408"N	104°39'26.043"W	0.51	Begin MWD+IFR Surveys
1973.00	1.500	152.200	1972.98	0.69	0.72	1.77	40°06'13.399"N	104°39'26.034"W	1.77	
2068.00	2.500	141.500	2067.92	-2.05	-2.01	3.64	40°06'13.372"N	104°39'26.010"W	1.12	
2162.00	4.300	151.300	2161.75	-6.78	-6.70	6.61	40°06'13.326"N	104°39'25.972"W	2.01	
2257.00	5.400	162.000	2256.41	-14.20	-14.08	9.70	40°06'13.253"N	104°39'25.932"W	1.49	
2354.00	7.000	164.500	2352.84	-24.27	-24.11	12.69	40°06'13.154"N	104°39'25.894"W	1.67	
2449.00	8.900	159.800	2446.93	-36.80	-36.59	16.77	40°06'13.030"N	104°39'25.841"W	2.11	
2544.00	10.500	159.900	2540.57	-51.90	-51.62	22.28	40°06'12.882"N	104°39'25.770"W	1.68	
2638.00	11.500	158.900	2632.84	-68.76	-68.40	28.60	40°06'12.716"N	104°39'25.689"W	1.08	
2734.00	11.900	160.200	2726.84	-87.09	-86.64	35.40	40°06'12.536"N	104°39'25.601"W	0.50	
2828.00	12.900	156.900	2818.65	-105.95	-105.41	42.80	40°06'12.350"N	104°39'25.506"W	1.30	
2923.00	13.100	160.600	2911.22	-125.96	-125.32	50.54	40°06'12.154"N	104°39'25.407"W	0.90	
3017.00	12.800	159.500	3002.83	-145.85	-145.12	57.72	40°06'11.958"N	104°39'25.314"W	0.41	
3113.00	12.500	160.500	3096.50	-165.69	-164.88	64.91	40°06'11.763"N	104°39'25.222"W	0.39	
3207.00	12.000	157.700	3188.36	-184.41	-183.51	72.02	40°06'11.579"N	104°39'25.130"W	0.83	
3303.00	12.100	156.700	3282.24	-202.98	-201.98	79.78	40°06'11.396"N	104°39'25.030"W	0.24	
3398.00	12.500	157.400	3375.06	-221.72	-220.62	87.67	40°06'11.212"N	104°39'24.929"W	0.45	
3493.00	11.900	154.300	3467.92	-240.14	-238.94	95.87	40°06'11.031"N	104°39'24.823"W	0.93	
3588.00	11.000	155.700	3561.02	-257.33	-256.02	103.85	40°06'10.862"N	104°39'24.721"W	0.99	
3682.00	11.300	160.000	3653.25	-274.24	-272.85	110.69	40°06'10.696"N	104°39'24.633"W	0.94	
3776.00	11.500	162.200	3745.40	-291.89	-290.43	116.70	40°06'10.522"N	104°39'24.555"W	0.51	
3872.00	11.800	164.300	3839.42	-310.52	-308.99	122.29	40°06'10.339"N	104°39'24.483"W	0.54	
3966.00	9.900	163.500	3931.74	-327.59	-325.99	127.18	40°06'10.170"N	104°39'24.420"W	2.03	
4060.00	11.100	163.200	4024.16	-344.06	-342.40	132.09	40°06'10.008"N	104°39'24.357"W	1.28	
4156.00	12.000	162.400	4118.22	-362.49	-360.76	137.78	40°06'09.827"N	104°39'24.284"W	0.95	



Actual Wellpath Report

POWERS 4N-27HZ AWP

Page 3 of 6



REFERENCE WELLPATH IDENTIFICATION

Operator	KERR-MCGEE OIL & GAS ONSHORE LP	Slot	SLOT#18 POWERS 4N-27HZ (510' FSL & 570' FWL, SEC.27)
Area	COLORADO	Well	POWERS 4N-27HZ
Field	WELD COUNTY (KERR MCGEE)	Wellbore	POWERS 4N-27HZ AWB
Facility	SEC.27-T2N-R65W		

WELLPATH DATA (119 stations) † = interpolated/extrapolated station

MD [ft]	Inclination [°]	Azimuth [°]	TVD [ft]	Vert Sect [ft]	North [ft]	East [ft]	Latitude	Longitude	DLS [°/100ft]	Comments
4251.00	11.300	163.200	4211.26	-380.88	-379.09	143.46	40°06'09.646"N	104°39'24.211"W	0.76	
4345.00	10.500	160.500	4303.56	-397.84	-395.98	148.98	40°06'09.479"N	104°39'24.140"W	1.01	
4441.00	9.100	158.000	4398.16	-413.20	-411.26	154.74	40°06'09.328"N	104°39'24.066"W	1.52	
4537.00	8.700	158.100	4493.00	-427.05	-425.04	160.29	40°06'09.192"N	104°39'23.994"W	0.42	
4633.00	6.800	154.400	4588.12	-438.97	-436.90	165.46	40°06'09.074"N	104°39'23.928"W	2.05	
4728.00	5.000	148.000	4682.62	-447.62	-445.48	170.08	40°06'08.990"N	104°39'23.868"W	2.01	
4822.00	3.600	144.900	4776.35	-453.55	-451.37	173.95	40°06'08.931"N	104°39'23.818"W	1.51	
4913.00	2.200	129.000	4867.23	-457.03	-454.81	176.95	40°06'08.897"N	104°39'23.780"W	1.76	
5008.00	1.300	124.000	4962.19	-458.81	-456.56	179.26	40°06'08.880"N	104°39'23.750"W	0.96	
5102.00	1.500	137.400	5056.16	-460.33	-458.06	180.98	40°06'08.865"N	104°39'23.728"W	0.41	
5198.00	0.700	136.900	5152.14	-461.70	-459.42	182.23	40°06'08.852"N	104°39'23.712"W	0.83	
5294.00	0.700	125.700	5248.13	-462.48	-460.19	183.11	40°06'08.844"N	104°39'23.701"W	0.14	
5483.00	0.500	109.000	5437.12	-463.44	-461.13	184.82	40°06'08.835"N	104°39'23.679"W	0.14	
5673.00	0.600	35.300	5627.12	-462.92	-460.59	186.18	40°06'08.840"N	104°39'23.661"W	0.35	
5864.00	0.900	41.600	5818.10	-461.00	-458.65	187.76	40°06'08.860"N	104°39'23.641"W	0.16	
6055.00	1.500	71.600	6009.06	-459.13	-456.74	191.12	40°06'08.878"N	104°39'23.597"W	0.44	
6150.00	1.100	87.100	6104.03	-458.72	-456.30	193.22	40°06'08.883"N	104°39'23.571"W	0.56	
6244.00	1.000	121.700	6198.02	-459.13	-456.68	194.81	40°06'08.879"N	104°39'23.550"W	0.67	
6340.00	0.500	342.400	6294.02	-459.18	-456.72	195.40	40°06'08.879"N	104°39'23.542"W	1.48	
6413.00	0.400	342.300	6367.01	-458.63	-456.18	195.23	40°06'08.884"N	104°39'23.545"W	0.14	
6481.00	1.500	326.800	6435.00	-457.65	-455.21	194.67	40°06'08.894"N	104°39'23.552"W	1.65	
6529.00	5.600	349.000	6482.90	-454.81	-452.38	193.88	40°06'08.921"N	104°39'23.562"W	8.85	
6576.00	9.600	349.300	6529.48	-448.70	-446.28	192.71	40°06'08.982"N	104°39'23.577"W	8.51	
6623.00	13.100	351.700	6575.55	-439.55	-437.15	191.21	40°06'09.072"N	104°39'23.596"W	7.51	
6670.00	16.400	355.800	6621.00	-427.65	-425.26	189.96	40°06'09.190"N	104°39'23.612"W	7.36	
6718.00	20.700	358.200	6666.50	-412.39	-410.02	189.20	40°06'09.340"N	104°39'23.622"W	9.10	
6765.00	24.900	358.500	6709.81	-394.19	-391.81	188.67	40°06'09.520"N	104°39'23.629"W	8.94	
6813.00	30.100	358.800	6752.38	-372.03	-369.66	188.16	40°06'09.739"N	104°39'23.636"W	10.84	
6860.00	35.400	359.100	6791.89	-346.62	-344.25	187.70	40°06'09.990"N	104°39'23.642"W	11.28	
6908.00	40.100	359.700	6829.83	-317.24	-314.88	187.40	40°06'10.280"N	104°39'23.645"W	9.82	
6955.00	44.700	357.500	6864.53	-285.56	-283.21	186.60	40°06'10.593"N	104°39'23.656"W	10.28	
7003.00	49.200	358.000	6897.29	-250.51	-248.17	185.23	40°06'10.940"N	104°39'23.673"W	9.41	
7050.00	52.900	359.200	6926.83	-213.96	-211.63	184.34	40°06'11.301"N	104°39'23.685"W	8.12	
7098.00	55.800	1.200	6954.81	-174.97	-172.64	184.49	40°06'11.686"N	104°39'23.683"W	6.93	
7145.00	61.400	0.900	6979.29	-134.89	-132.54	185.22	40°06'12.082"N	104°39'23.673"W	11.93	
7193.00	69.400	0.300	6999.25	-91.29	-88.94	185.67	40°06'12.513"N	104°39'23.668"W	16.71	
7240.00	75.500	0.100	7013.42	-46.51	-44.15	185.83	40°06'12.956"N	104°39'23.666"W	12.99	
7287.00	79.800	359.000	7023.47	-0.61	1.75	185.46	40°06'13.409"N	104°39'23.670"W	9.43	
7334.00	82.600	357.300	7030.66	45.82	48.17	183.96	40°06'13.868"N	104°39'23.690"W	6.95	
7379.00	87.600	356.400	7034.50	90.60	92.92	181.50	40°06'14.310"N	104°39'23.721"W	11.29	
7425.00†	88.367	355.424	7036.12	136.49	138.78	178.22	40°06'14.763"N	104°39'23.763"W	2.70	7" Casing Point
7445.00	88.700	355.000	7036.63	156.44	158.70	176.55	40°06'14.960"N	104°39'23.785"W	2.70	
7508.00	89.700	356.300	7037.51	219.30	221.51	171.77	40°06'15.581"N	104°39'23.846"W	2.60	
7604.00	88.900	357.400	7038.68	315.21	317.36	166.50	40°06'16.528"N	104°39'23.914"W	1.42	
7700.00	89.000	358.300	7040.44	411.16	413.27	162.90	40°06'17.476"N	104°39'23.961"W	0.94	



Actual Wellpath Report

POWERS 4N-27HZ AWP

Page 4 of 6



REFERENCE WELLPATH IDENTIFICATION

Operator	KERR-MCGEE OIL & GAS ONSHORE LP	Slot	SLOT#18 POWERS 4N-27HZ (510' FSL & 570' FWL, SEC.27)
Area	COLORADO	Well	POWERS 4N-27HZ
Field	WELD COUNTY (KERR MCGEE)	Wellbore	POWERS 4N-27HZ AWB
Facility	SEC.27-T2N-R65W		

WELLPATH DATA (119 stations)

MD [ft]	Inclination [°]	Azimuth [°]	TVD [ft]	Vert Sect [ft]	North [ft]	East [ft]	Latitude	Longitude	DLS [°/100ft]	Comments
7794.00	88.800	359.700	7042.25	505.14	507.24	161.26	40°06'18.405"N	104°39'23.982"W	1.50	
7889.00	89.000	357.800	7044.07	600.12	602.19	159.19	40°06'19.343"N	104°39'24.008"W	2.01	
7984.00	90.100	356.000	7044.82	695.03	697.05	154.05	40°06'20.280"N	104°39'24.074"W	2.22	
8175.00	89.900	4.400	7044.82	885.83	887.87	154.71	40°06'22.166"N	104°39'24.066"W	4.40	
8270.00	90.800	2.700	7044.24	980.56	982.68	160.60	40°06'23.103"N	104°39'23.990"W	2.02	
8461.00	91.200	1.600	7040.90	1171.29	1173.52	167.76	40°06'24.989"N	104°39'23.898"W	0.61	
8650.00	89.800	1.100	7039.25	1360.15	1362.45	172.21	40°06'26.856"N	104°39'23.841"W	0.79	
8746.00	89.300	359.100	7040.01	1456.13	1458.44	172.38	40°06'27.805"N	104°39'23.838"W	2.15	
8935.00	88.500	358.600	7043.64	1645.09	1647.37	168.59	40°06'29.672"N	104°39'23.887"W	0.50	
9125.00	89.000	1.900	7047.78	1834.99	1837.30	169.42	40°06'31.548"N	104°39'23.877"W	1.76	
9316.00	89.800	359.600	7049.78	2025.90	2028.25	171.92	40°06'33.435"N	104°39'23.844"W	1.27	
9411.00	90.900	358.400	7049.20	2120.89	2123.24	170.26	40°06'34.374"N	104°39'23.866"W	1.71	
9602.00	91.800	358.400	7044.70	2311.82	2314.11	164.93	40°06'36.260"N	104°39'23.934"W	0.47	
9696.00	90.600	357.600	7042.73	2405.77	2408.03	161.65	40°06'37.188"N	104°39'23.977"W	1.53	
9791.00	90.200	357.500	7042.07	2500.73	2502.94	157.59	40°06'38.126"N	104°39'24.029"W	0.43	
9886.00	90.200	357.900	7041.74	2595.69	2597.86	153.77	40°06'39.064"N	104°39'24.078"W	0.42	
9980.00	89.500	359.900	7041.98	2689.68	2691.84	151.97	40°06'39.993"N	104°39'24.101"W	2.25	
10170.00	90.100	358.800	7042.65	2879.68	2881.82	149.81	40°06'41.871"N	104°39'24.129"W	0.66	
10265.00	88.600	358.200	7043.73	2974.66	2976.78	147.33	40°06'42.809"N	104°39'24.161"W	1.70	
10360.00	88.700	358.400	7045.96	3069.62	3071.71	144.51	40°06'43.747"N	104°39'24.197"W	0.24	
10456.00	89.100	358.800	7047.81	3165.59	3167.66	142.17	40°06'44.695"N	104°39'24.227"W	0.59	
10552.00	88.800	358.300	7049.57	3261.57	3263.61	139.74	40°06'45.643"N	104°39'24.258"W	0.61	
10648.00	89.100	358.500	7051.33	3357.54	3359.56	137.06	40°06'46.592"N	104°39'24.293"W	0.38	
10837.00	89.300	358.900	7053.96	3546.51	3548.49	132.77	40°06'48.459"N	104°39'24.348"W	0.24	
11026.00	89.500	358.800	7055.94	3735.50	3737.44	128.98	40°06'50.326"N	104°39'24.397"W	0.12	
11216.00	90.100	0.000	7056.61	3925.49	3927.43	126.99	40°06'52.203"N	104°39'24.423"W	0.71	
11406.00	89.300	0.300	7057.60	4115.47	4117.42	127.48	40°06'54.081"N	104°39'24.416"W	0.45	
11492.00	88.900	359.000	7058.95	4201.45	4203.41	126.96	40°06'54.931"N	104°39'24.423"W	1.58	Last BHI MWD+IFR Surveys
11560.00	88.900	359.000	7060.26	4269.44	4271.39	125.77	40°06'55.602"N	104°39'24.438"W	0.00	Projection to Bit

HOLE & CASING SECTIONS - Ref Wellbore: POWERS 4N-27HZ AWB Ref Wellpath: POWERS 4N-27HZ AWP

String/Diameter	Start MD [ft]	End MD [ft]	Interval [ft]	Start TVD [ft]	End TVD [ft]	Start N/S [ft]	Start E/W [ft]	End N/S [ft]	End E/W [ft]
13.5in Open Hole	13.00	1845.00	1832.00	13.00	1844.99	0.00	0.00	1.50	0.98
9.625in Casing Surface	13.00	1845.00	1832.00	13.00	1844.99	0.00	0.00	1.50	0.98
8.75in Open Hole	1845.00	7433.00	5588.00	1844.99	7036.34	1.50	0.98	146.75	177.57
7in Casing Intermediate	13.00	7425.00	7412.00	13.00	7036.12	0.00	0.00	138.78	178.22
6.125in Open Hole	7425.00	11560.00	4135.00	7036.12	7060.26	138.78	178.22	4271.39	125.77



Actual Wellpath Report

POWERS 4N-27HZ AWP

Page 5 of 6



REFERENCE WELLPATH IDENTIFICATION

Operator	KERR-MCGEE OIL & GAS ONSHORE LP	Slot	SLOT#18 POWERS 4N-27HZ (510' FSL & 570' FWL, SEC.27)
Area	COLORADO	Well	POWERS 4N-27HZ
Field	WELD COUNTY (KERR MCGEE)	Wellbore	POWERS 4N-27HZ AWB
Facility	SEC.27-T2N-R65W		

TARGETS

Name	MD [ft]	TVD [ft]	North [ft]	East [ft]	Grid East [US ft]	Grid North [US ft]	Latitude	Longitude	Shape
SECTION 27 LINES		-18.00	-7.66	1290.14	3237030.25	1281754.37	40°06'13.316"N	104°39'09.454"W	polygon
ROBERT POWERS USX X 27-05 100' RADIUS (MIN C-C 153', 1.90 SF)		7049.58	4203.42	1.63	3235701.83	1285952.84	40°06'54.931"N	104°39'26.036"W	circle
ROBERT POWERS USX X 27-05 100' RADIUS (MIN C-C 105', 1.64 SF)		7053.00	2863.22	14.28	3235727.22	1284612.87	40°06'41.687"N	104°39'25.873"W	circle
POWERS 4N-27HZ BHL REV-4 (460' FNL & 750' FWL, SEC.27)		7057.00	4296.44	126.56	3235825.87	1286047.04	40°06'55.850"N	104°39'24.428"W	point
POWERS 4N-27HZ LAND BOX		7057.00	0.00	0.00	3235740.15	1281749.77	40°06'13.392"N	104°39'26.057"W	polygon
SECTION 27 HARD LINES (460' SETBACKS)		7255.00	-7.66	1290.14	3237030.25	1281754.37	40°06'13.316"N	104°39'09.454"W	polygon

WELLPATH COMPOSITION - Ref Wellbore: POWERS 4N-27HZ AWB Ref Wellpath: POWERS 4N-27HZ AWP

Start MD [ft]	End MD [ft]	Positional Uncertainty Model	Log Name/Comment	Wellbore
13.00	1773.00	Generic gyro - continuous (Standard)	MS GYRO SURVEYS <113-1773>	POWERS 4N-27HZ AWB
1773.00	7379.00	NaviTrak (MagCorr, Floater)	BHI MWD+IFR SURVEYS 8 3/4" HOLE <1879-7379>	POWERS 4N-27HZ AWB
7379.00	11492.00	OnTrak (MAGCORR, IFR)	BHI MWD+IFR SURVEYS 6 1/8" HOLE <7445-11492>	POWERS 4N-27HZ AWB
11492.00	11560.00	Blind Drilling (std)	Projection to bit	POWERS 4N-27HZ AWB



Actual Wellpath Report

POWERS 4N-27HZ AWP

Page 6 of 6



REFERENCE WELLPATH IDENTIFICATION

Operator	KERR-MCGEE OIL & GAS ONSHORE LP	Slot	SLOT#18 POWERS 4N-27HZ (510' FSL & 570' FWL, SEC.27)
Area	COLORADO	Well	POWERS 4N-27HZ
Field	WELD COUNTY (KERR MCGEE)	Wellbore	POWERS 4N-27HZ AWB
Facility	SEC.27-T2N-R65W		

WELLPATH COMMENTS

MD [ft]	Inclination [°]	Azimuth [°]	TVD [ft]	Comment
13.00	0.000	28.670	13.00	Tie-On
113.00	0.180	28.670	113.00	Begin GYRO Surveys
1773.00	0.250	191.500	1772.99	Tie-Into GYRO Surveys
1879.00	0.300	32.900	1878.99	Begin MWD+IFR Surveys
7425.00	88.367	355.424	7036.12	7" Casing Point
11492.00	88.900	359.000	7058.95	Last BHI MWD+IFR Surveys
11560.00	88.900	359.000	7060.26	Projection to Bit