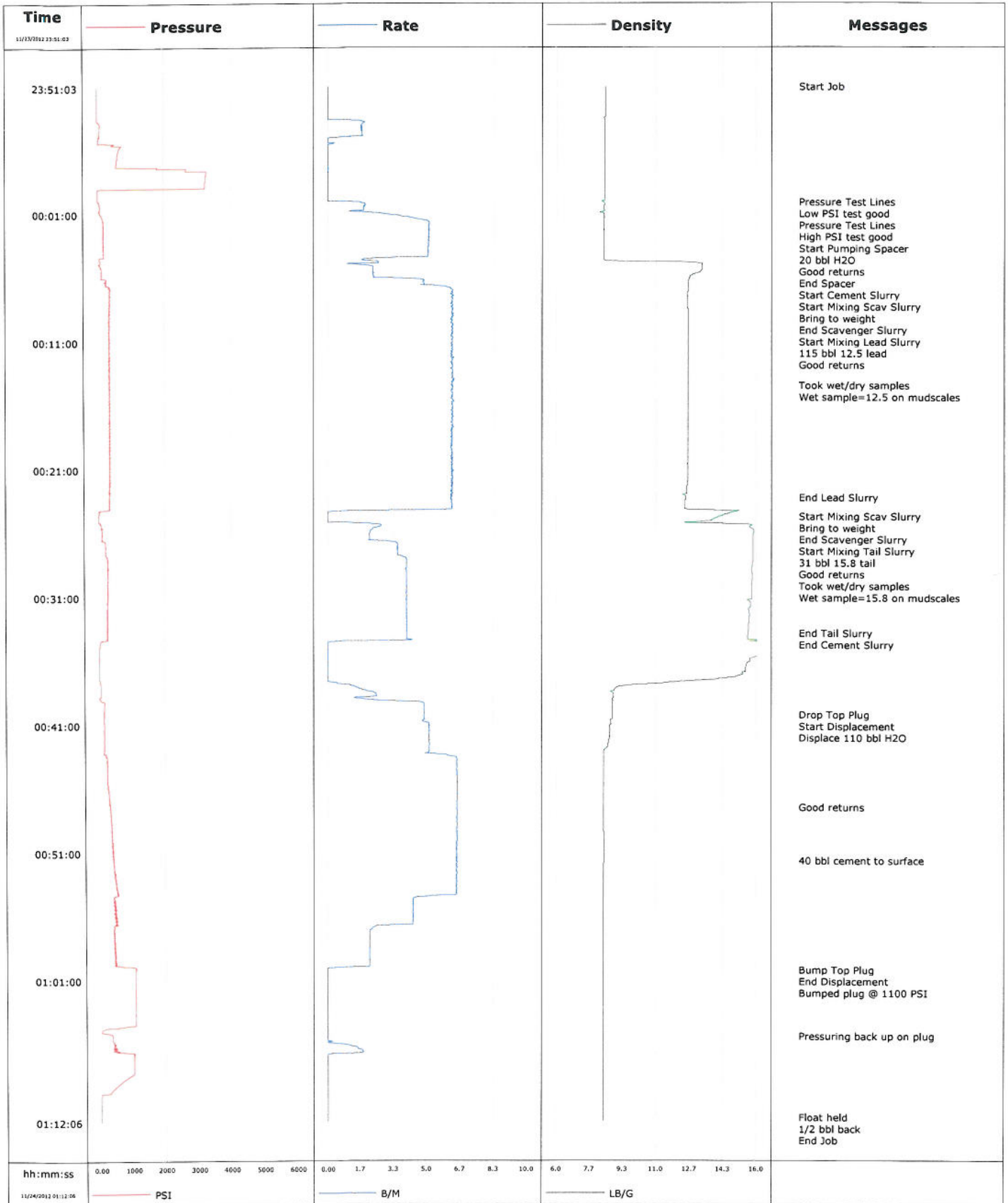
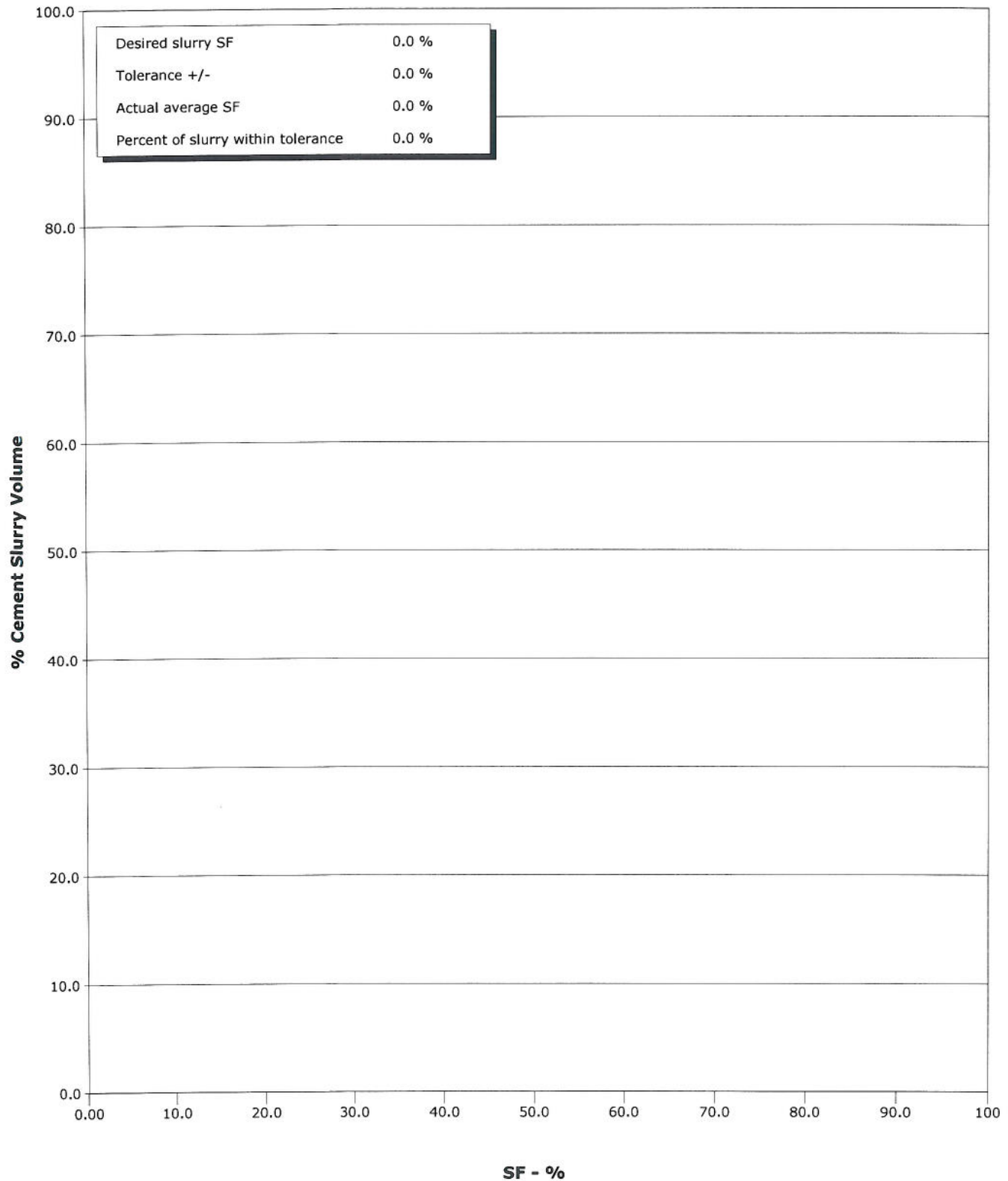


Well	Shideler Fee 6-3AA	Client	Encana
Field	Mamm Creek	SIR No.	CE6H-00010
Engineer	Matt Fair/Mike Reedy	Job Type	9 5/8" Surface
Country	United States	Job Date	11-23-2012



Well	Shideler Fee 6-3AA	Client	Encana
Field	Mamm Creek	SIR No.	CE6H-00010
Engineer	Matt Fair/Mike Reedy	Job Type	9 5/8" Surface
Country	United States	Job Date	11-23-2012

- 12/24/1971 20:05:12 to 12/24/1971 20:15:52



				Customer Encana		Job Number CE6H-00010	
Well Shideler Fee 6-3AA			Location (legal)		Schlumberger Location		Job Start Nov/23/2012
Field Mamm Creek		Formation Name/Type Shale		Deviation deg	Bit Size 12.3 in	Well MD 1462.0 ft	Well TVD 1462.0 ft
County Garfield		State/Province Colorado		BHP psi	BHST 100 degF	BHCT 85 degF	Pore Press. Gradient lb/gal
Well Master 0631419464		API/UWI					
Rig Name Patterson 303		Drilled For Gas	Service Via Land		Casing/Liner		
			Depth, ft	Size, in	Weight, lb/ft	Grade	Thread
Offshore Zone		Well Class New	Well Type Development		1462.0	9.6	36.0
			0.0	0.0	0.0		
Drilling Fluid Type Bentonite		Max. Density 10.00 lb/gal	Plastic Viscosity cP		Tubing/Drill Pipe		
			T/D	Depth, ft	Size, in	Weight, lb/ft	Grade
Service Line Cementing		Job Type 9 5/8" Surface					
Max. Allowed Tub. Press 3520 psi		Max. Allowed Ann. Press 2030 psi		WH Connection Single Cement head		Perforations/Open Hole	
				Top, ft	Bottom, ft	shot/ft	No. of Shots
				ft	ft		Total Interval ft
				ft	ft		Diameter in
				ft	ft		
				Treat Down Casing	Displacement 110.0 bbl	Packer Type	Packer Depth ft
				Tubing Vol. bbl	Casing Vol. 113.0 bbl	Annular Vol. 85.0 bbl	Openhole Vol. 201.0 bbl
Service Instructions 306sks/115bbl 12.5 Lead Y=2.11 149sks/31bbl 15.8 Tail Y=1.18							
Casing/Tubing Secured <input checked="" type="checkbox"/>		1 Hole Vol. Circulated prior to Cement <input checked="" type="checkbox"/>		Casing Tools		Squeeze Job	
Lift Pressure 723 psi				Shoe Type Float		Squeeze Type	
Pipe Rotated <input type="checkbox"/>		Pipe Reciprocated <input type="checkbox"/>		Shoe Depth 1462.0 ft		Tool Type	
No. Centralizers		Top Plugs 1	Bottom Plugs 0	Stage Tool Type		Tool Depth ft	
Cement Head Type Single				Stage Tool Depth ft		Tail Pipe Size in	
Job Scheduled For Nov/23/2012 18:00		Arrived on Location Nov/23/2012 18:00		Leave Location Nov/24/2012 03:00		Collar Type Float	
						Tail Pipe Depth ft	
				Collar Depth 1418.0 ft		Sqz. Total Vol. bbl	
Date	Time 24-hr clock	CPF1_DENSITY LB/G	CPF1_PRESS PSI	CPF1_TTL_RATE B/M	CPF1_TTL_STAGE BBL	CPF1_TTL_VOLUME BBL	Message
11/23/2012	23:51:03	8.45	9	0.0	0.0	0.0	Started Acquisition
11/23/2012	23:51:04	8.45	10	0.0	0.0	0.0	Start Job
11/23/2012	23:53:33	8.40	7	0.0	0.0	0.0	
11/23/2012	23:56:03	8.40	647	0.0	2.3	2.3	
11/23/2012	23:58:33	8.40	3234	0.0	2.3	2.3	
11/24/2012	00:00:07	8.34	54	1.5	2.4	2.4	Pressure Test Lines
11/24/2012	00:00:08	8.34	61	1.6	2.4	2.4	Low PSI test good
11/24/2012	00:00:09	8.37	66	1.6	2.4	2.4	Pressure Test Lines
11/24/2012	00:00:10	8.39	66	1.7	2.4	2.4	High PSI test good
11/24/2012	00:00:12	8.40	73	1.8	2.5	2.5	Start Pumping Spacer
11/24/2012	00:00:16	8.40	73	1.8	2.6	2.6	20 bbl H2O
11/24/2012	00:01:03	8.38	117	2.9	4.1	4.1	
11/24/2012	00:03:33	8.39	186	5.1	16.2	16.2	
11/24/2012	00:04:08	8.40	197	5.0	19.1	19.1	Good returns
11/24/2012	00:04:22	8.40	197	5.0	20.3	20.3	End Spacer
11/24/2012	00:04:29	8.40	72	2.6	20.8	20.8	Start Cement Slurry
11/24/2012	00:04:30	8.40	72	2.3	20.8	20.8	Start Mixing Scav Slurry
11/24/2012	00:06:03	12.66	196	2.8	0.4	24.2	
11/24/2012	00:06:51	12.59	378	6.1	4.3	28.1	End Scavenger Slurry
11/24/2012	00:06:52	12.58	364	6.2	4.5	28.2	115 bbl 12.5 lead
11/24/2012	00:08:33	12.57	345	6.2	14.9	38.7	

Well		Field			Job Start		Customer		Job Number
Shideler Fee 6-3AA		Mamm Creek			Nov/23/2012		Encana		CE6H-00010
Date	Time 24-hr clock	CPF1_DENSITY LB/G	CPF1_PRESS PSI	CPF1_TTL_RATE B/M	CPF1_TTL_STAGE BBL	CPF1_TTL_VOLUME BBL	Message		
11/24/2012	00:11:03	12.58	369	6.2	30.5	54.3			
11/24/2012	00:13:33	12.59	364	6.2	46.1	69.9			
11/24/2012	00:14:29	12.59	373	6.3	51.9	75.7	Took wet/dry samples		
11/24/2012	00:14:55	12.59	358	6.2	54.6	78.4	Wet sample=12.5 on mudscales		
11/24/2012	00:16:03	12.59	358	6.3	61.7	85.5			
11/24/2012	00:18:33	12.58	357	6.2	77.3	101.0			
11/24/2012	00:21:03	12.58	360	6.2	92.8	116.6			
11/24/2012	00:23:14	12.47	352	6.2	106.4	130.2	End Lead Slurry		
11/24/2012	00:23:33	12.44	337	6.2	108.4	132.2			
11/24/2012	00:24:44	14.22	25	0.0	112.9	136.7	Start Mixing Scav Slurry		
11/24/2012	00:24:45	14.17	25	0.0	112.9	136.7	Bring to weight		
11/24/2012	00:25:37	15.70	147	2.4	113.8	137.6	End Scavenger Slurry		
11/24/2012	00:25:38	15.71	96	2.4	113.9	137.6	Start Mixing Tail Slurry		
11/24/2012	00:25:39	15.72	94	2.3	113.9	137.7	31 bbl 15.8 tail		
11/24/2012	00:26:03	15.88	118	2.1	0.0	138.6			
11/24/2012	00:26:29	15.85	111	2.1	0.9	139.5	Good returns		
11/24/2012	00:26:35	15.85	100	2.1	1.1	139.7	Took wet/dry samples		
11/24/2012	00:26:43	15.85	221	3.2	1.5	140.0	Wet sample=15.8 on mudscales		
11/24/2012	00:28:33	15.81	278	4.0	8.2	146.7			
11/24/2012	00:31:03	15.79	270	4.0	18.1	156.6			
11/24/2012	00:33:33	15.61	272	4.0	28.0	166.6			
11/24/2012	00:33:53	15.60	256	4.0	29.3	167.9	End Tail Slurry		
11/24/2012	00:33:54	15.60	258	4.0	29.4	167.9	End Cement Slurry		
11/24/2012	00:36:03	15.67	21	0.0	31.8	170.3			
11/24/2012	00:38:33	8.81	60	2.4	1.2	171.5			
11/24/2012	00:40:15	8.83	162	4.8	7.6	177.9	Drop Top Plug		
11/24/2012	00:40:16	8.83	162	4.8	7.7	178.0	Displace 110 bbl H2O		
11/24/2012	00:41:03	8.76	171	5.1	11.5	181.8			
11/24/2012	00:43:33	8.40	233	6.3	24.4	194.8			
11/24/2012	00:46:03	8.40	275	6.5	40.7	211.0			
11/24/2012	00:47:31	8.40	320	6.5	50.2	220.5	Good returns		
11/24/2012	00:48:33	8.40	367	6.5	56.9	227.3			
11/24/2012	00:51:03	8.40	419	6.5	73.2	243.5			
11/24/2012	00:51:41	8.41	416	6.5	77.3	247.6	40 bbl cement to surface		
11/24/2012	00:53:33	8.39	489	6.5	89.4	259.7			
11/24/2012	00:56:03	8.38	508	4.3	102.2	272.5			
11/24/2012	00:58:33	8.38	446	2.1	109.1	279.5			
11/24/2012	01:00:13	8.38	1091	0.0	112.4	282.7	Bump Top Plug		
11/24/2012	01:00:14	8.38	1088	0.0	112.4	282.7	Bumped plug @ 1100 PSI		
11/24/2012	01:01:03	8.38	1081	0.0	112.4	282.7			
11/24/2012	01:03:33	8.38	1077	0.0	112.4	282.7			
11/24/2012	01:05:27	8.38	369	0.0	112.4	282.7	Pressuring back up on plug		
11/24/2012	01:06:03	8.38	423	0.6	112.4	282.7			
11/24/2012	01:08:33	8.38	894	0.0	113.5	283.9			
11/24/2012	01:11:03	8.38	22	0.0	113.5	283.9			
11/24/2012	01:11:47	8.38	22	0.0	113.5	283.9	Float held		
11/24/2012	01:11:49	8.38	21	0.0	113.5	283.9	1/2 bbl back		

Well Shideler Fee 6-3AA	Field Mamm Creek	Job Start Nov/23/2012	Customer Encana	Job Number CE6H-00010
-----------------------------------	----------------------------	---------------------------------	---------------------------	---------------------------------

Post Job Summary

Average Pump Rates, bbl/min					Volume of Fluid Injected, bbl					
Slurry 4.8	N2	Mud	Maximum Rate 6.5	Total Slurry 146.0	Mud 0.0	Spacer 20.3	N2			
Treating Pressure Summary, psi					Breakdown Fluid					
Maximum 3276	Final 21	Average 392	Bump Plug to 1000	Breakdown	Type	Volume bbl	Density lb/gal			
Avg. N2 Percent %	Designed Slurry Volume 146.0 bbl		Displacement 108.8 bbl	Mix Water Temp 68 degF	Cement Circulated to Surface? <input checked="" type="checkbox"/>	Volume 40.0 bbl				
					Washed Thru Perfs <input type="checkbox"/>	To ft				
Customer or Authorized Representative Erasmio Parras			Schlumberger Supervisor Matt Fair/Mike Reedy			Circulation Lost <input type="checkbox"/>	Job Completed <input checked="" type="checkbox"/>			
						-	-			