

Scale 1:240 (5"=100') Imperial
Measured Depth Log

Well Name: MELBON 19N-E8HZ
Location: Section 17, T2N, R65W, Weld County, CO.
License Number: API#0512336754
Spud Date: 27 April 2013
Surface Coordinates: Sec 17, T2N, R65W 2,499' FNL & 1,125' FWL
LAT: 40°08'20.758" N LONG: -104°41'35.962" W
Bottom Hole Coordinates: Section 8, T2N R65W 2,115' FSL & 1601' FWL
Lat: 40°09'07.038" N Long: -104°41'29.107"
Ground Elevation (ft): 4949'
Logged Interval (ft): 6560' To: 11607'
Formation: Pierre Shale (Sharon Springs) Niobrara Chalks
Type of Drilling Fluid: WBM

Region: Wattenberg
Drilling Completed: 04 May 2013

K.B. Elevation (ft): 4965'
Total Depth (ft): 11607'

Printed by HORIZONTAL.LOG from WellSight Systems 1-800-447-1534 www.WellSight.com

OPERATOR

Company: Anadarko/Kerr-McGee Oil & Gas Onshore LP
Address: Granite Tower - 1099 18th St, Ste 1800
Denver, CO 80202
CO Geologist, Tom Birmingham

GEOLOGIST

Name: W. H. McCroskey III, Jack Rogers
Company: Goolsby Brothers & Assoc. (GBA), Inc. (www.goolsbybrothers.com)
Address: 575 Union Blvd.
Suite 208,
Lakewood CO. 80228

E-logs

MWD GR: 6,560' - 11,607'
MWD Resistivity: 7,610' - 11,607'


Casing

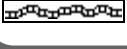
9 5/8" Surface Casing set @ 1,074'
7" Intermediate Casing set @ 7,609'
4 1/2" Production Liner to be set to @ 11,592'

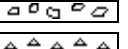
Comments


1) Drilling Contractor: Xtreme Drilling, Rig # 22
Rig Manager: Mike Headley / Tyler Humphrey
2) Company Man: Dave Cornett / Jim Boyd / Will Pettijohn/Pete Perry
3) Well Site Geologists: Goolsby Brothers & Assoc. :
W. H McCroskey III / Jack Rogers
4) Mud Company : Newpark Drilling Fluids,
Mud Engineer: Jody Graham/Michael Cook
5) Directional Drilling: Sperry / Halliburton
Drillers: Chad Ruehlin, Cody Ruehlen/Alejandro Duran, Jesse Corral,
MWD:
6) Gas Equipment: Mudlogging Systems Inc.
by Terra Services
Redbox # ML-336 w/ Ratcliff Agitator


ROCK TYPES


Anhy

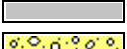
Bent

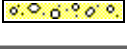
Brec


Cht


Clyst


Coal

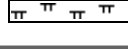
Oil sat.


Congl


Dol

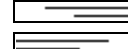
Gyp


Lmst


Mrlst


Salt


Shale


Shcol


Shgy


Ss

Sltst

Ss

Chalk

Carb sh

Sltly sh

ACCESSORIES

MINERAL

Anhy

Arggrn

Arg

Bent

Bit

Brecfrag

Calc

Carb

Chtdk

Chtlt

Dol

Feldspar

Ferrpel

Ferr

Glau

Gyp

Hvymin

Kaol

Marl

Minxl

Nodule

Phos

Pyr

Salt

Sandy

Silt

Sil

Sulphur

Tuff

FOSSIL

Algae

Amph

Belm

Bioclst

Brach

Bryozoa

Cephal

Coral

Crin

Echin

Fish

Foram

Fossil

Gastro

Oolite

Ostra

Pelec

Pellet

Pisolite

Plant

Strom

STRINGER

Chlkstg

Anhy

Arg

Bent

Coal

Dol

Gyp

Ls

Mrst

Sltstrg

Ssstrg


TEXTURE

Boundst

Chalky

Cryxln

Earthy

Finexln

Grainst

Lithogr

Microxln

Mudst

Packst

Wackest

OIL SHOWS

- Even
- Spotted



Ques



Dead



Vspotty



near even

POROSITY TYPE

- Earthy
- Fenest



Fracture



Inter



Moldic

OTHER SYMBOLS



Organic



Pinpoint



Vuggy

ROUNDING

- Rounded
- Subrnd



Subang



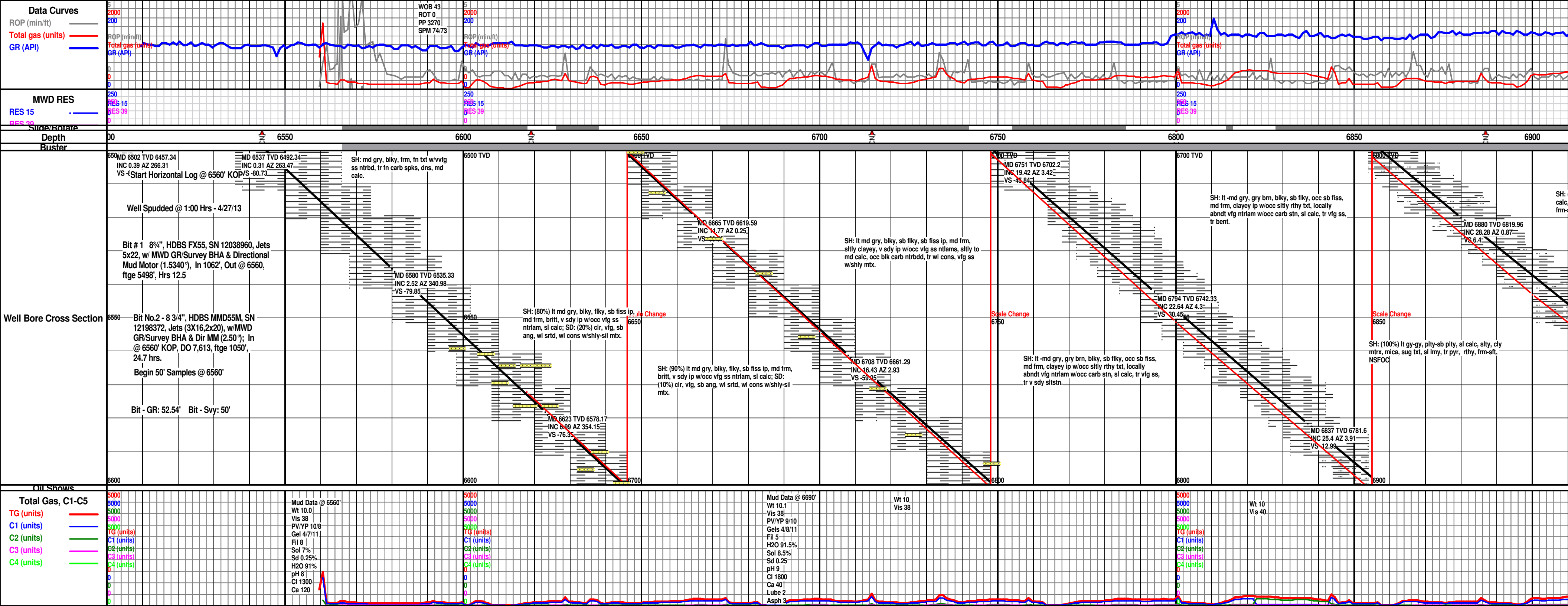
Angular

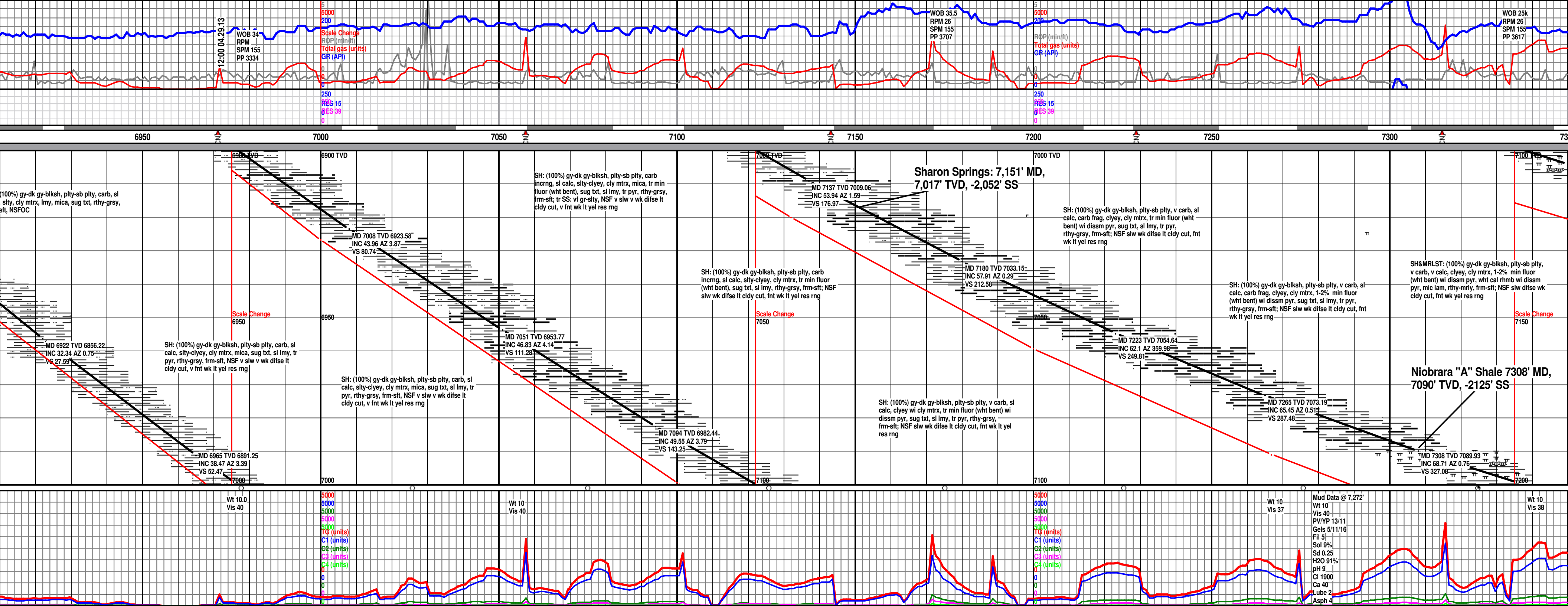
SORTING

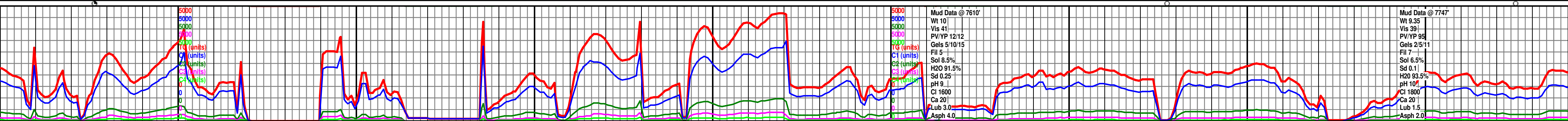
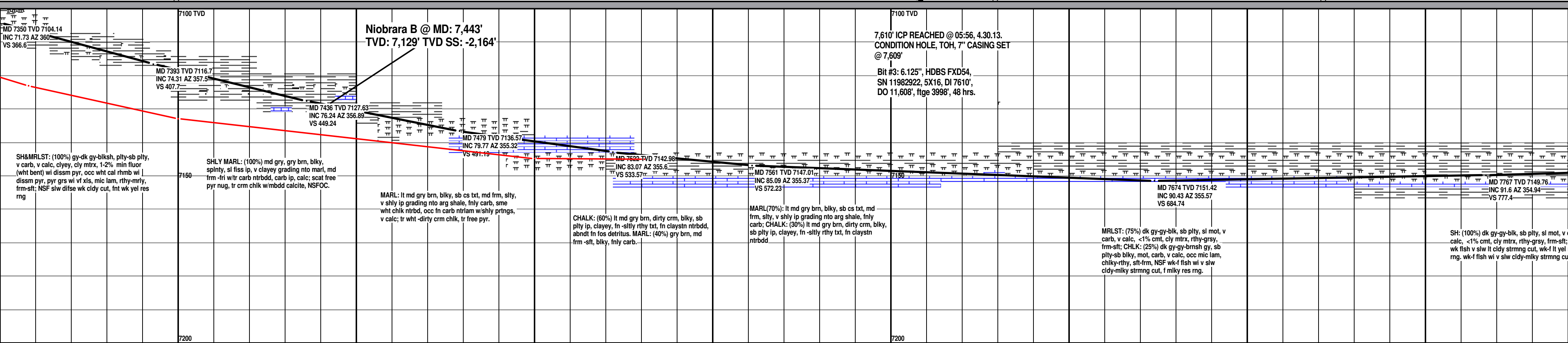
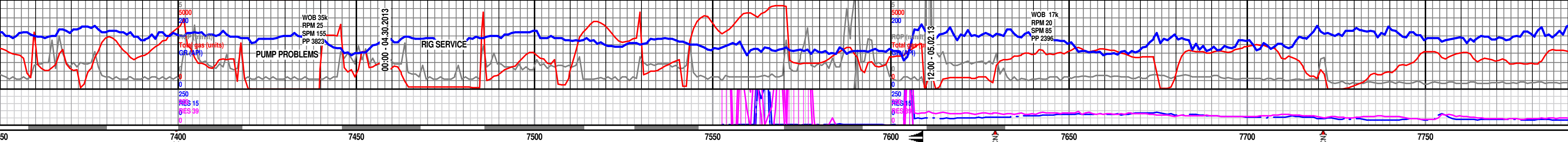
- Well
- Moderate

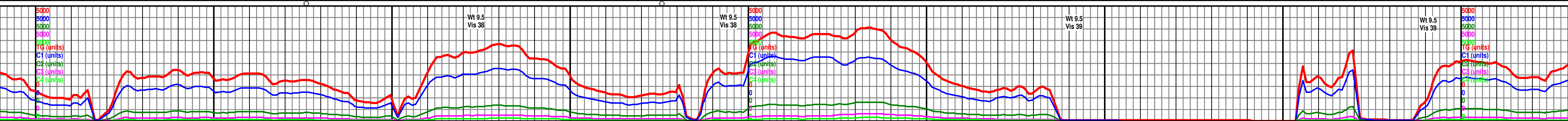
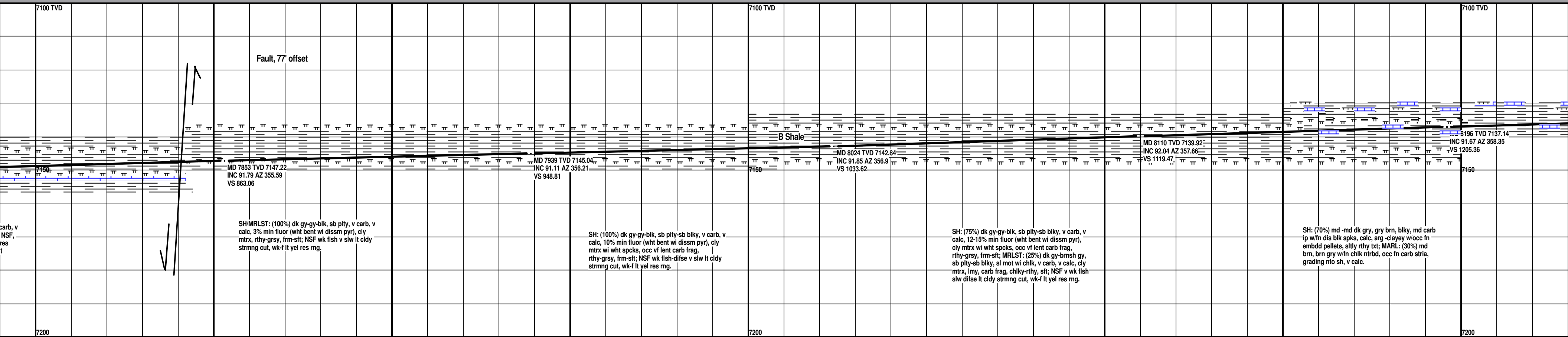


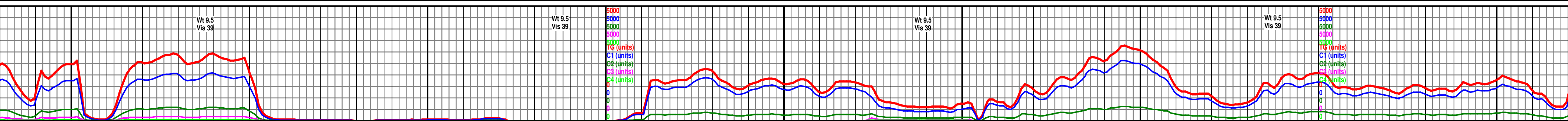
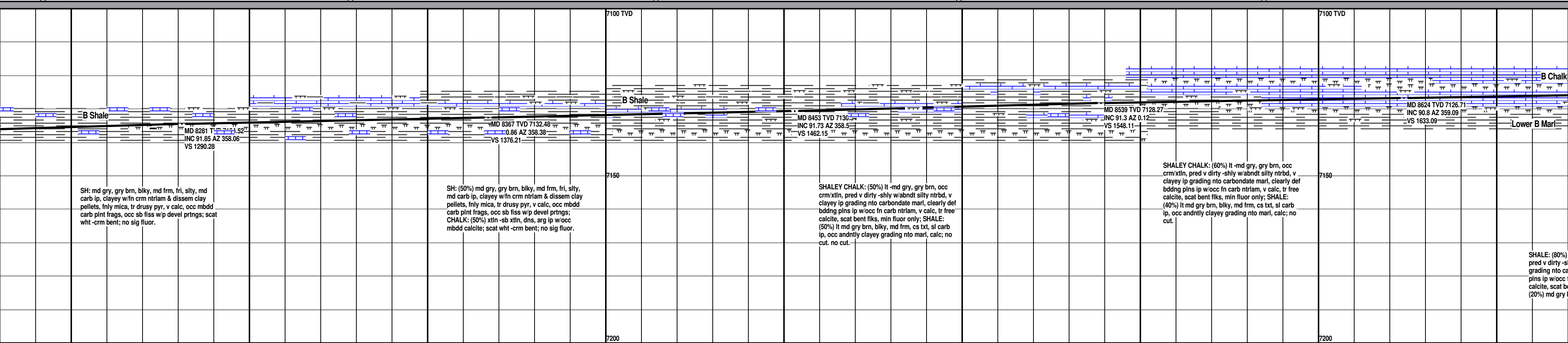
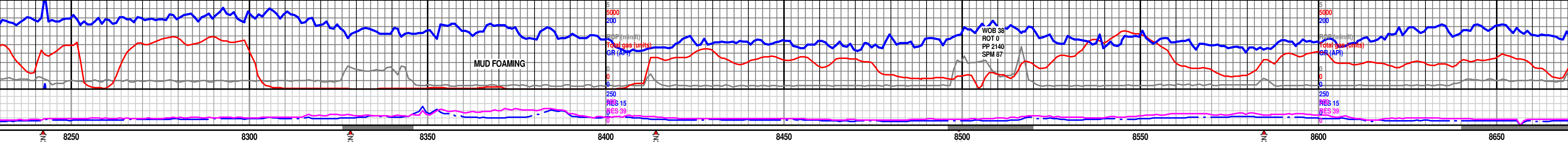
Poor

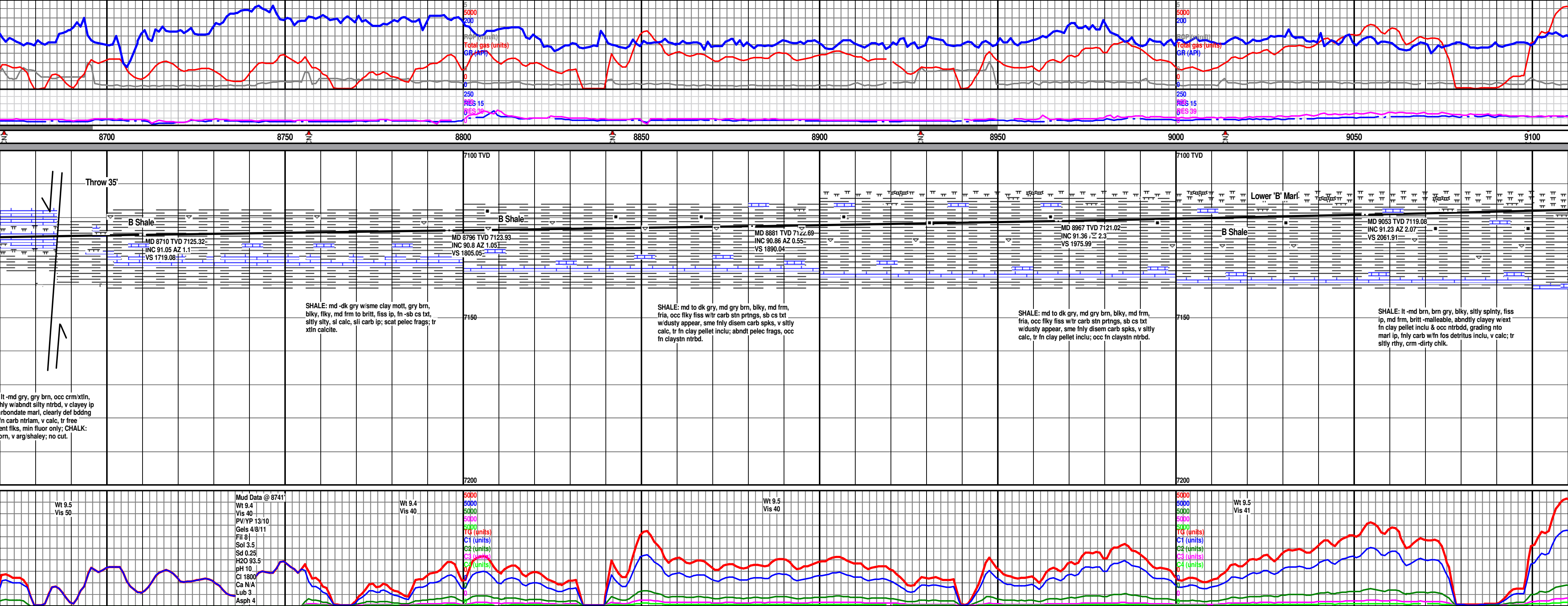


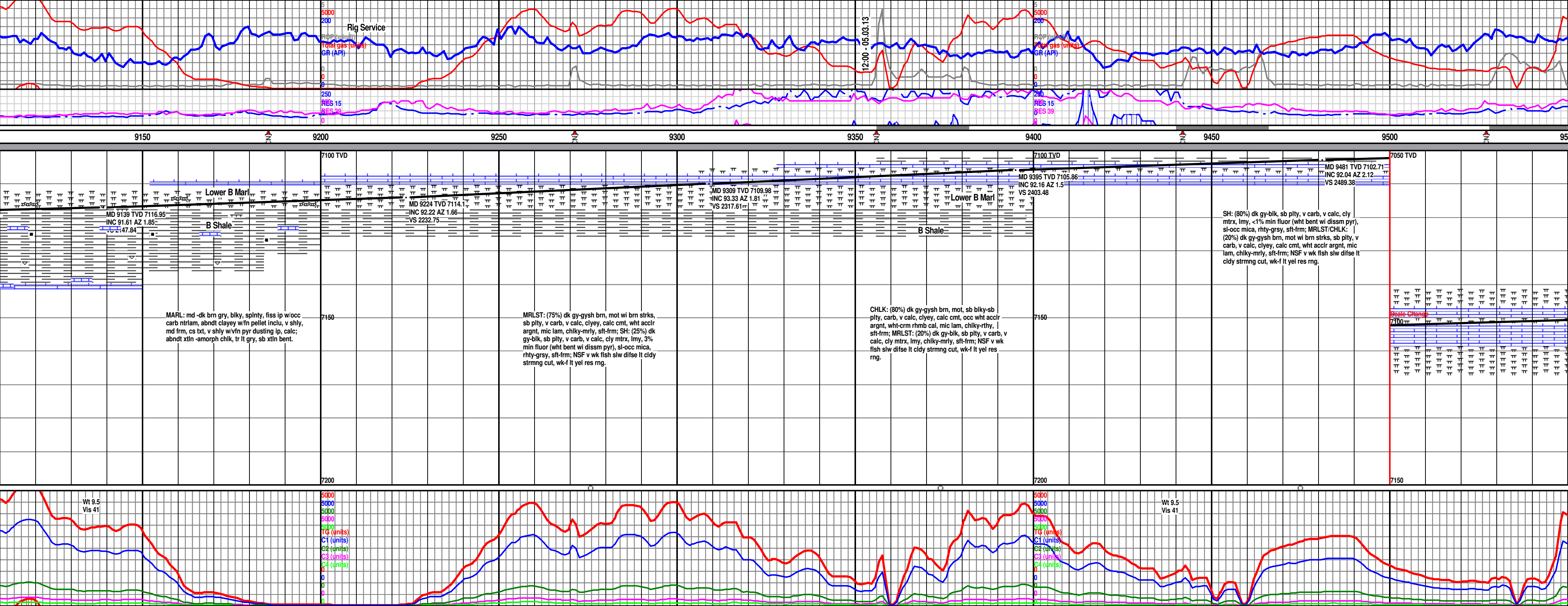


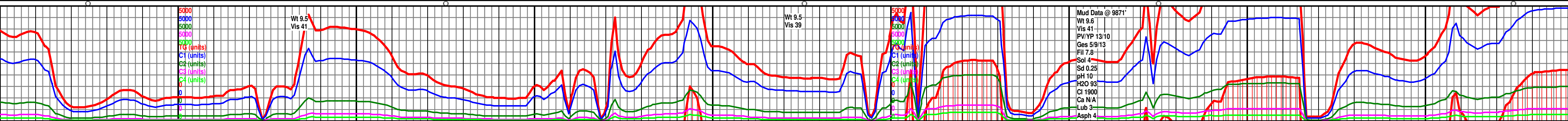
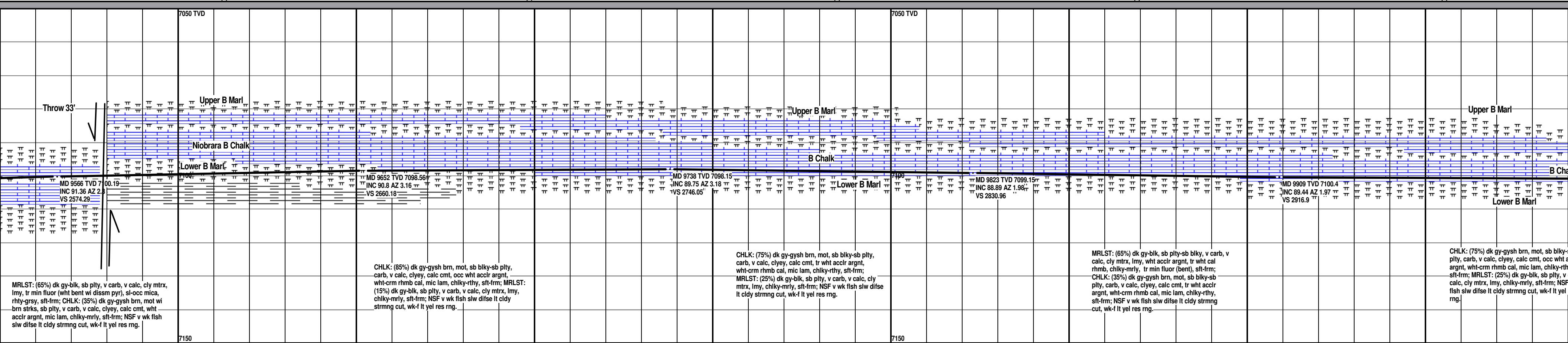
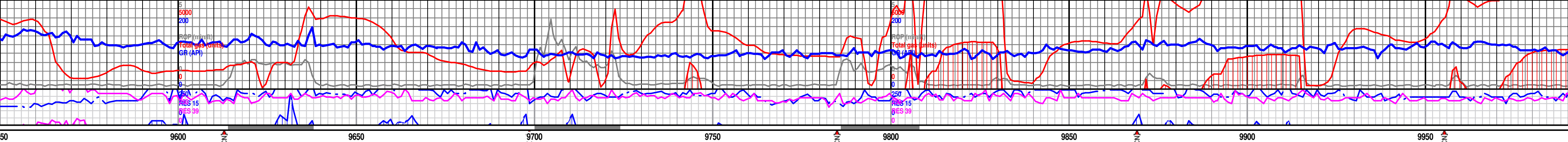


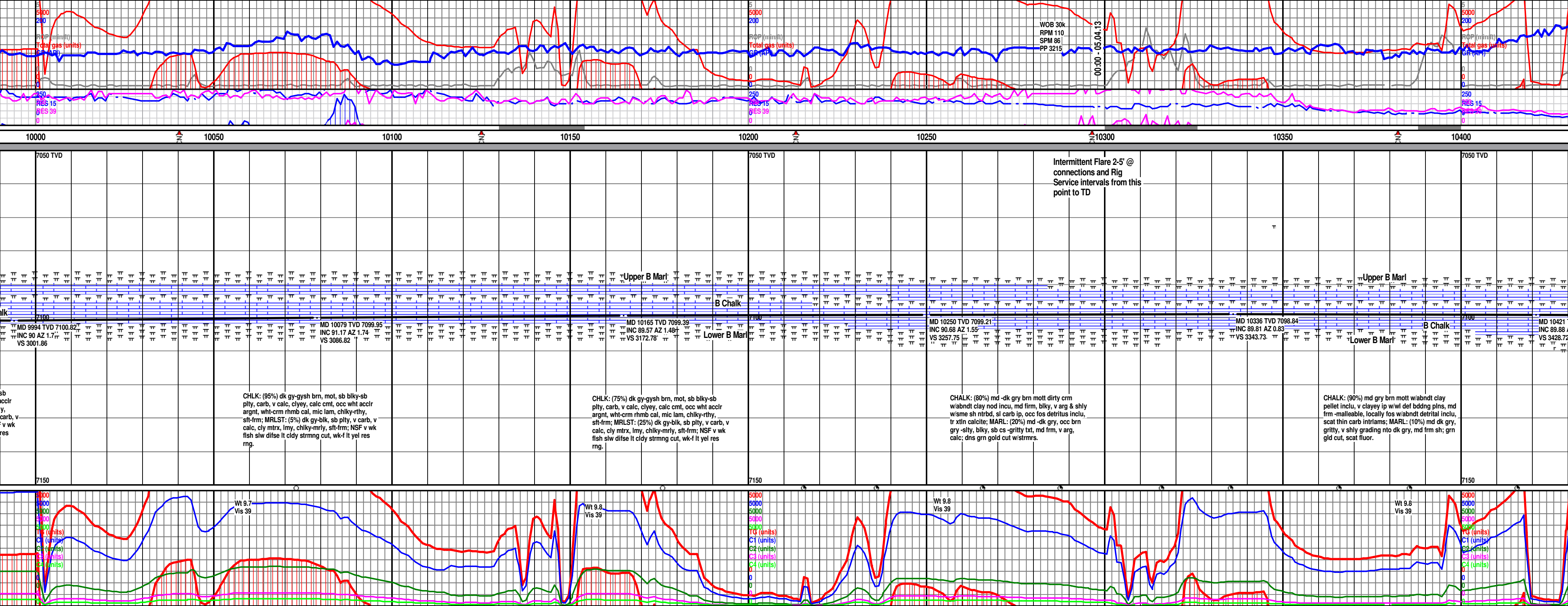


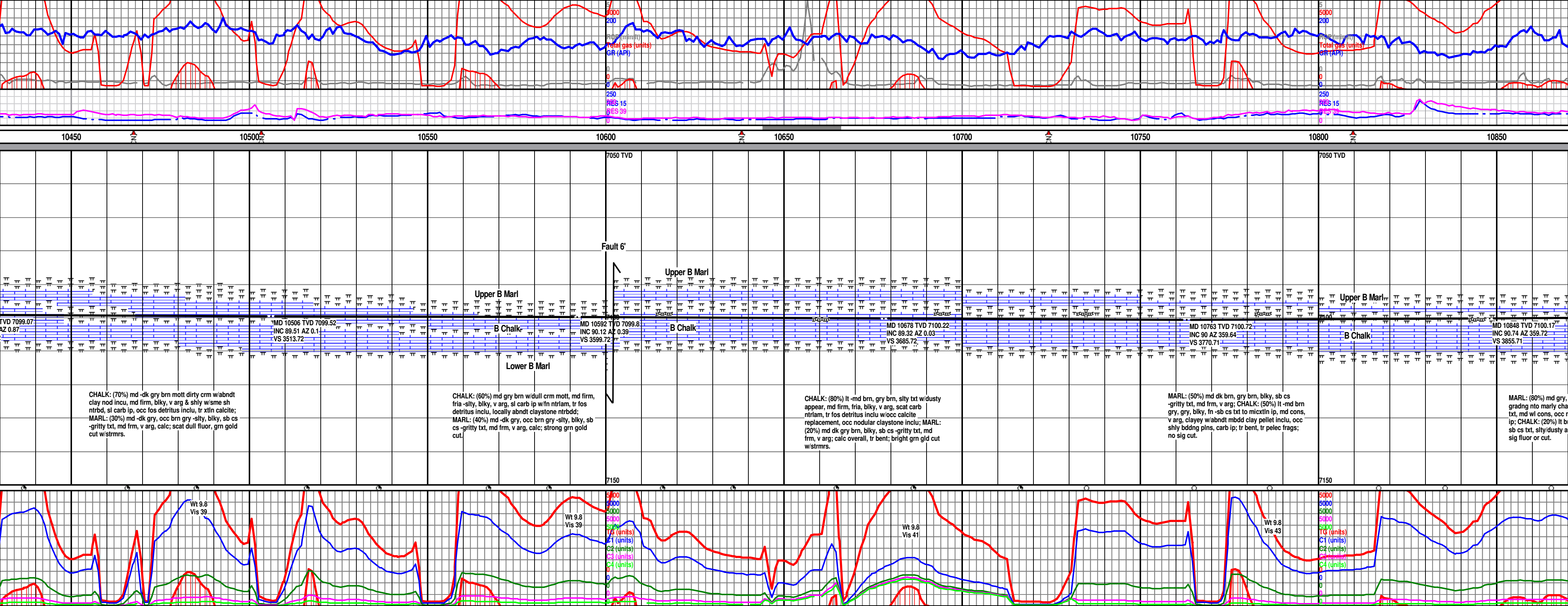


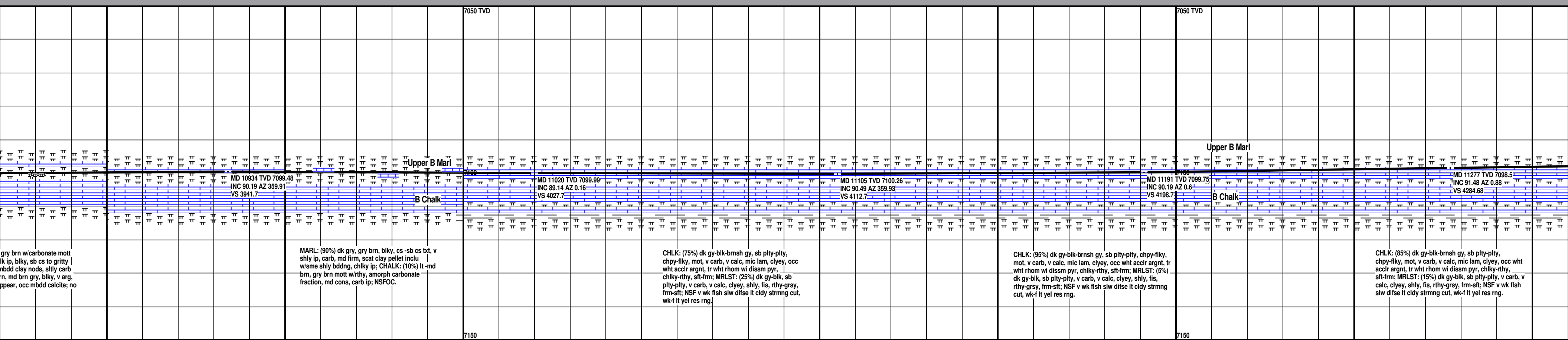


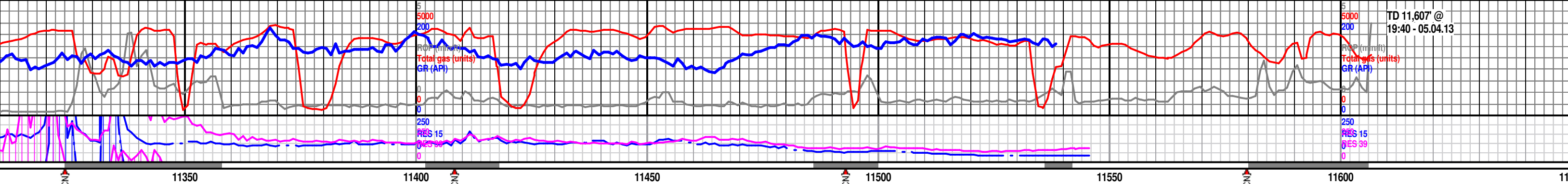












7050 TVD										7050 TVD									
MD 11362 TVD 7097.13 INC 90.37 AZ 1.17 VS 4369.65										MD 11447 TVD 7096.12 INC 90.99 AZ 1.17 VS 4454.63									
Upper B Marl										MD 11533 TVD 7094.22 INC 91.55 AZ 0.74 VS 4540.6									
B Chalk										MD 11561 TVD 7093.45 INC 91.61 AZ 0.47 VS 4568.59									
MRLST: (65%) dk gy-blk, sb plty-plty, v carb, v calc, clyey, shly, fis, rthy-grsy, frm-sft; tr SH: aa mrlst aa tr min fluor (wht bent); CHLK: (85%) dk gy-blk-brnsh gy, sb plty-plty, chpy-flky, mot, v carb, v calc, mic lam, clyey, occ wht acclr argnt, tr wht rhom wi diss pyr, chky-rthy, sft-frm; NSF v wk flsh slw difse lt cldy strmg cut, wk-f lt yel res rng.										MRLST: (65%) dk gy-blk, sb plty-plty, v carb, v calc, clyey, shly, fis, rthy-grsy, frm-sft; CHLK: (35%) dk gy-blk-brnsh gy, sb plty-plty, chpy-flky, mot, v carb, v calc, mic lam, clyey, occ wht acclr argnt, tr wht rhom wi diss pyr, chky-rthy, sft-frm; NSF v wk flsh slw difse lt cldy strmg cut, wk-f lt yel res rng.									
										MRLST: (55%) dk gy-blk, sb plty-plty, v carb, v calc, clyey, shly, fis, rthy-grsy, frm-sft; CHLK: (45%) dk gy-blk-brnsh gy, sb plty-plty, chpy-flky, mot, v carb, v calc, mic lam, clyey, occ wht acclr argnt, tr wht rhom wi diss pyr, chky-rthy, sft-frm; NSF v wk flsh slw difse lt cldy strmg cut, wk-f lt yel res rng.									
7100										7100									
7150										7150									
Reach 11,607' MD TD @ 19:40 Hrs - 05.04.13; Circ & Cond; TOH f/ 4.5" Liner set 11,592'										Reach 11,607' MD TD @ 19:40 Hrs - 05.04.13; Circ & Cond; TOH f/ 4.5" Liner set 11,592'									
Reached TD 100'+ early due to Mud Motor failure.										Reached TD 100'+ early due to Mud Motor failure.									
BTM Hole Coordinates Sec 08, T2N, R65W 2,115' FSL 1,601' FWL										BTM Hole Coordinates Sec 08, T2N, R65W 2,115' FSL 1,601' FWL									
MD 11607 TVD 7092.16 INC 91.61 AZ 0.47 VS 4614.57										MD 11607 TVD 7092.16 INC 91.61 AZ 0.47 VS 4614.57									
THANK YOU FOR CHOOSING GOOLSBY BROTHERS & ASSOCIATES										THANK YOU FOR CHOOSING GOOLSBY BROTHERS & ASSOCIATES									
Jack R. Rogers W. H. McCroskey, III										Jack R. Rogers W. H. McCroskey, III									

