

2.5" Alum. Cap,
0.3' High
Lat: 39.681119°
Long: 104.565311°

WELL LOCATION PLAT T4S, R64W, 6th P.M.

1996 Private Alum.
Cap, Flush w/Ground,
LS 27941
Lat: 39.680936°
Long: 104.546328°

ConocoPhillips Company

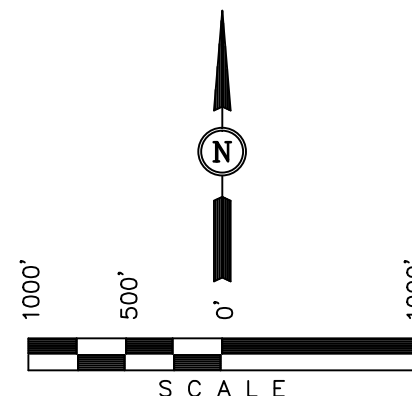
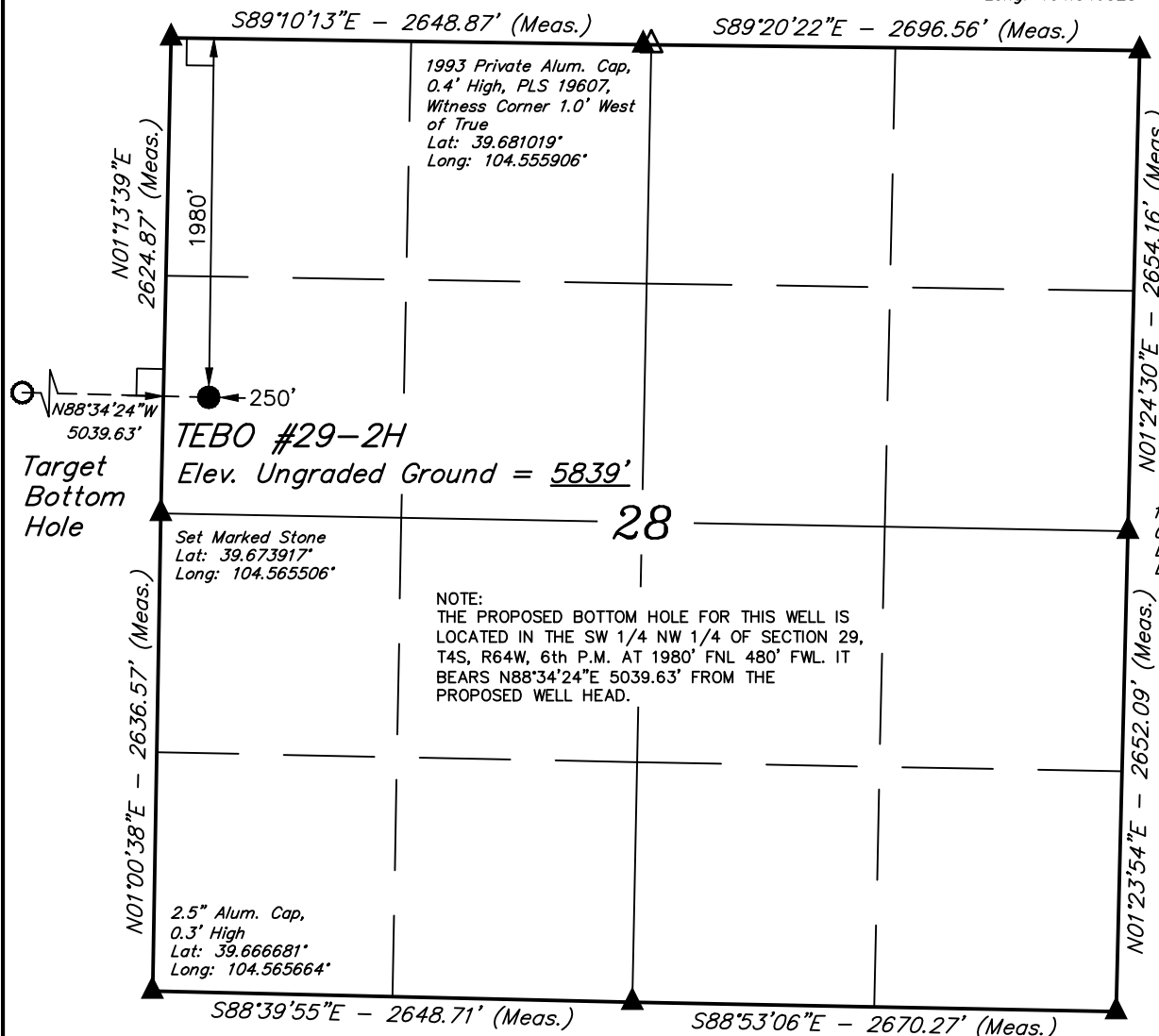
Well location, TEBO #29-2H (SURFACE LOCATION),
located as shown in the SW 1/4 NW 1/4 of
Section 28, T4S, R64W, 6th P.M., Arapahoe
County, Colorado.

BASIS OF ELEVATION

BENCHMARK 374 LOCATED ON THE SECTION LINE BETWEEN
SECTIONS 12 & 13, T5S, R64W, 6th. P.M., TAKEN FROM 1988
PUBLISHED DATUM BY THE UNITED STATES DEPARTMENT OF
THE INTERIOR, GEOLOGICAL SURVEY AS BEING 6054.61 FEET.

BASIS OF BEARINGS

BASIS OF BEARINGS IS A G.P.S. OBSERVATION.



CERTIFICATE

THIS IS TO CERTIFY THAT THE ABOVE PLAT WAS PREPARED FROM
FIELD NOTES OF ACTUAL SURVEYS MADE BY ME OR UNDER MY
SUPERVISION AND THAT THE SAME ARE TRUE AND CORRECT TO THE
BEST OF MY KNOWLEDGE AND BELIEF.

REGISTERED LAND SURVEYOR
REGISTRATION NO. 17492
STATE OF COLORADO

LEGEND:

- └─┘ = 90° SYMBOL
- = PROPOSED WELL HEAD.
- ▲ = SECTION CORNERS LOCATED.
- △ = SECTION CORNERS
RE-ESTABLISHED. (Not Set
on Ground.)

PDOP = 1.3

NAD 83 (SURFACE LOCATION)	
LATITUDE	= 39°40'32.43" (39.675675)
LONGITUDE	= 104°33'52.45" (104.564569)
NAD 27 (SURFACE LOCATION)	
LATITUDE	= 39°40'32.48" (39.675689)
LONGITUDE	= 104°33'50.57" (104.564047)

UINTAH ENGINEERING & LAND SURVEYING
85 SOUTH 200 EAST - VERNAL, UTAH 84078
(435) 789-1017

SCALE 1" = 1000'	DATE SURVEYED: 02-14-13	DATE DRAWN: 02-19-13
PARTY J.H. C.M. A.D.	REFERENCES G.L.O. PLAT	
WEATHER COLD	FILE ConocoPhillips Company	

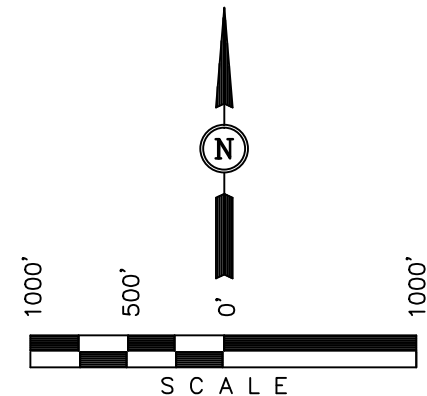
2.5" Alum. Cap,
PLS 28285
Lat: 39.681475°
Long: 104.584100°

2.5" Alum. Cap,
0.3' High
Lat: 39.681119°
Long: 104.565311°

Well location, TEBO #29-2H (TARGET BOTTOM HOLE), located as shown in the SW 1/4 NW 1/4 of Section 29, T4S, R64W, 6th P.M., Arapahoe County, Colorado.

BENCHMARK 374 LOCATED ON THE SECTION LINE BETWEEN
SECTIONS 12 & 13, T5S, R64W, 6th. P.M., TAKEN FROM 1988
PUBLISHED DATUM BY THE UNITED STATES DEPARTMENT OF
THE INTERIOR, GEOLOGICAL SURVEY AS BEING 6054.61 FEET.

BASIS OF BEARINGS IS A G.P.S. OBSERVATION.






THIS IS TO CERTIFY THAT THE ABOVE PLAT WAS PREPARED FROM
FIELD NOTES OF ACTUAL SURVEYS MADE BY ME OR UNDER MY
SUPERVISION AND THAT THE SAME ARE TRUE AND CORRECT TO THE
BEST OF MY KNOWLEDGE AND BELIEF.

REGISTERED LAND SURVEYOR
REGISTRATION NO. 17492
STATE OF COLORADO
09-25-13

UINTAH ENGINEERING & LAND SURVEYING
85 SOUTH 200 EAST - VERNAL, UTAH 84078
(435) 789-1017

SCALE 1" = 1000'	DATE SURVEYED: 02-14-13	DATE DRAWN: 02-19-13
PARTY J.H. C.M A.D.	REFERENCES G.L.O. PLAT	
WEATHER COLD	FILE ConocoPhillips Company	

 = 90° SYMBOL
 = PROPOSED WELL HEAD.
 = SECTION CORNERS LOCATED.

NAD 83 (TARGET BOTTOM HOLE)	
LATITUDE =	39°40'33.63" (39.676008)
LONGITUDE =	104°34'56.87" (104.582464)
NAD 27 (TARGET BOTTOM HOLE)	
LATITUDE =	39°40'33.68" (39.676022)
LONGITUDE =	104°34'54.99" (104.581942)

SCALE 1" = 1000'	DATE SURVEYED: 02-14-13	DATE DRAWN: 02-19-13
PARTY J.H. C.M A.D.	REFERENCES G.L.O. PLAT	
WEATHER COLD	FILE ConocoPhillips Company	

SECTION BREAKDOWN T4S, R64W, 6th P.M.

2.5" Alum. Cap,
PLS 28285
Lat: 39.681475°
Long: 104.584100°

2.5" Alum. Cap,
0.3' High
Lat: 39.681119°
Long: 104.565311°

ConocoPhillips Company

Well location, TEBO #29-2H (TARGET BOTTOM HOLE), located as shown in the SW 1/4 NW 1/4 of Section 29, T4S, R64W, 6th P.M., Arapahoe County, Colorado.

BASIS OF ELEVATION

BENCHMARK 374 LOCATED ON THE SECTION LINE BETWEEN SECTIONS 12 & 13, T5S, R64W, 6th. P.M., TAKEN FROM 1988 PUBLISHED DATUM BY THE UNITED STATES DEPARTMENT OF THE INTERIOR, GEOLOGICAL SURVEY AS BEING 6054.61 FEET.

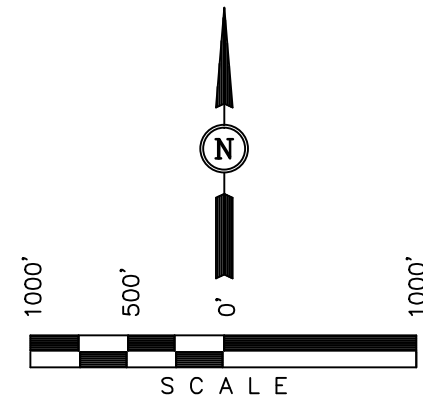
BASIS OF BEARINGS

BASIS OF BEARINGS IS A G.P.S. OBSERVATION.

Surface Location

Set Marked Stone
Lat: 39.673917°
Long: 104.565506°

NOTE:
THE PROPOSED BOTTOM HOLE BEARS N88°34'24"E 5039.63' FROM THE PROPOSED WELL HEAD WHICH IS LOCATED IN THE SW 1/4 NW 1/4 OF SECTION 28, T4S, R64W, 6th P.M. AT 1980' FNL 250' FWL.



CERTIFICATE

THIS IS TO CERTIFY THAT THE ABOVE PLAT WAS PREPARED FROM FIELD NOTES OF ACTUAL SURVEYS MADE BY ME OR UNDER MY SUPERVISION AND THAT THE SAME ARE TRUE AND CORRECT TO THE BEST OF MY KNOWLEDGE AND BELIEF.

REGISTERED LAND SURVEYOR
REGISTRATION NO. 17492
STATE OF COLORADO

UINTAH ENGINEERING & LAND SURVEYING
85 SOUTH 200 EAST - VERNAL, UTAH 84078
(435) 789-1017

SCALE 1" = 1000'	DATE SURVEYED: 02-14-13	DATE DRAWN: 02-19-13
PARTY J.H. C.M. A.D.	REFERENCES G.L.O. PLAT	
WEATHER COLD	FILE ConocoPhillips Company	

LEGEND:

- └─┘ = 90° SYMBOL
- = PROPOSED WELL HEAD.
- ▲ = SECTION CORNERS LOCATED.

NAD 83 (TARGET BOTTOM HOLE)
LATITUDE = 39°40'33.63" (39.676008)
LONGITUDE = 104°34'56.87" (104.582464)
NAD 27 (TARGET BOTTOM HOLE)
LATITUDE = 39°40'33.68" (39.676022)
LONGITUDE = 104°34'54.99" (104.581942)

Set Marked Stone
0.3' High
Lat: 39.666850°
Long: 104.574992°

2.5" Alum. Cap,
0.3' High
Lat: 39.666681°
Long: 104.565664°

29

