

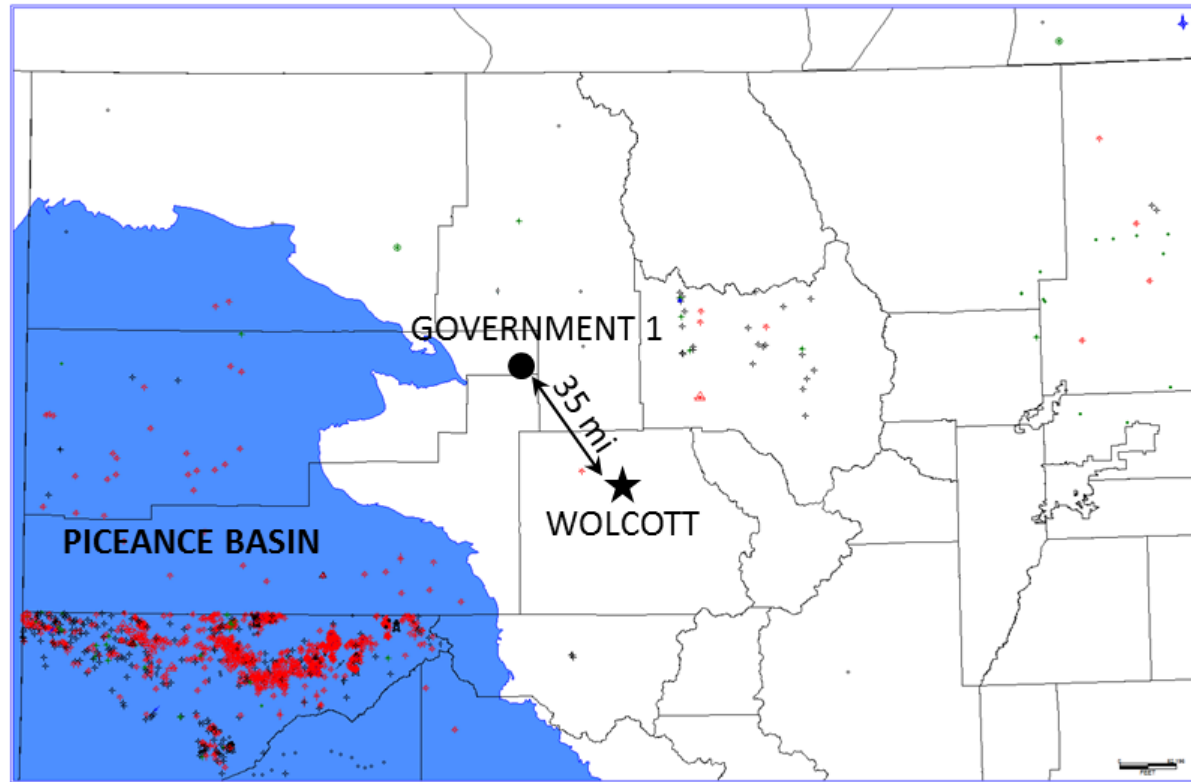
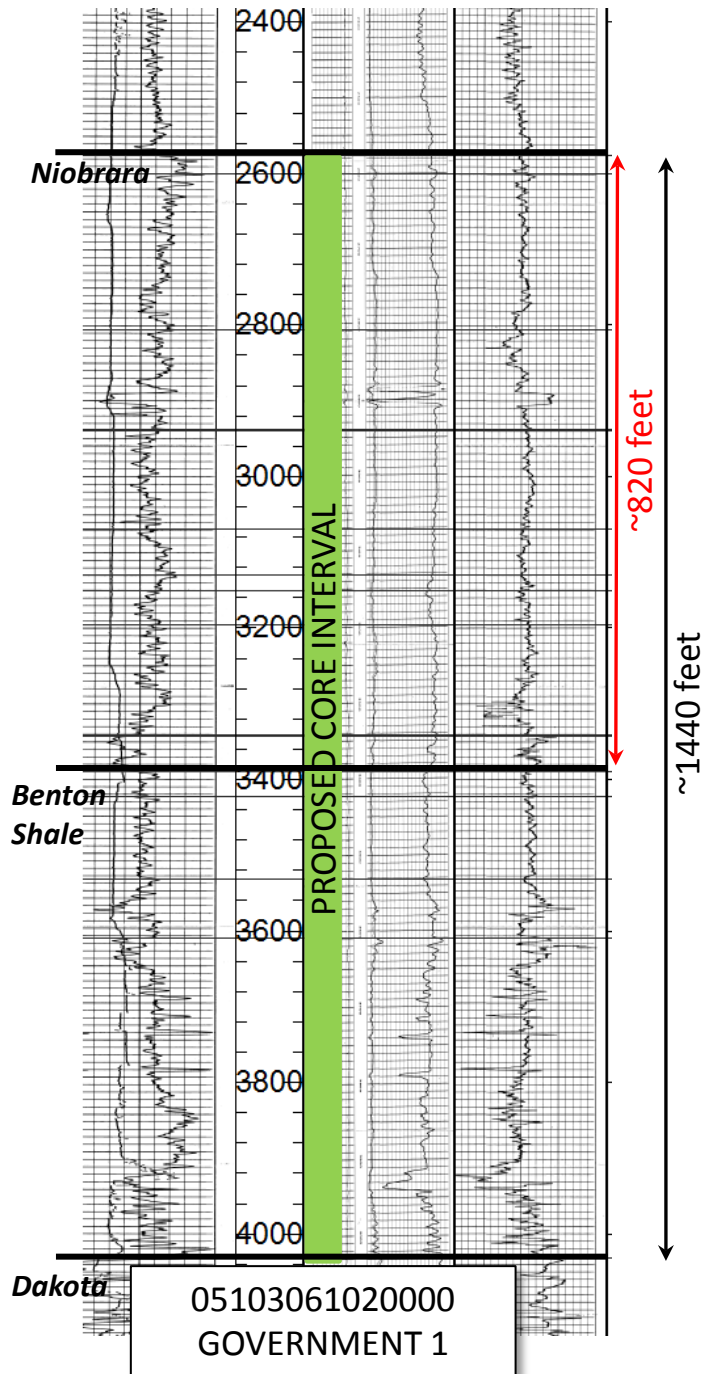
# HM-1-13

Location

Type Log

Estimates of Formation Thickness

# Type Log – GOVERNMENT 1

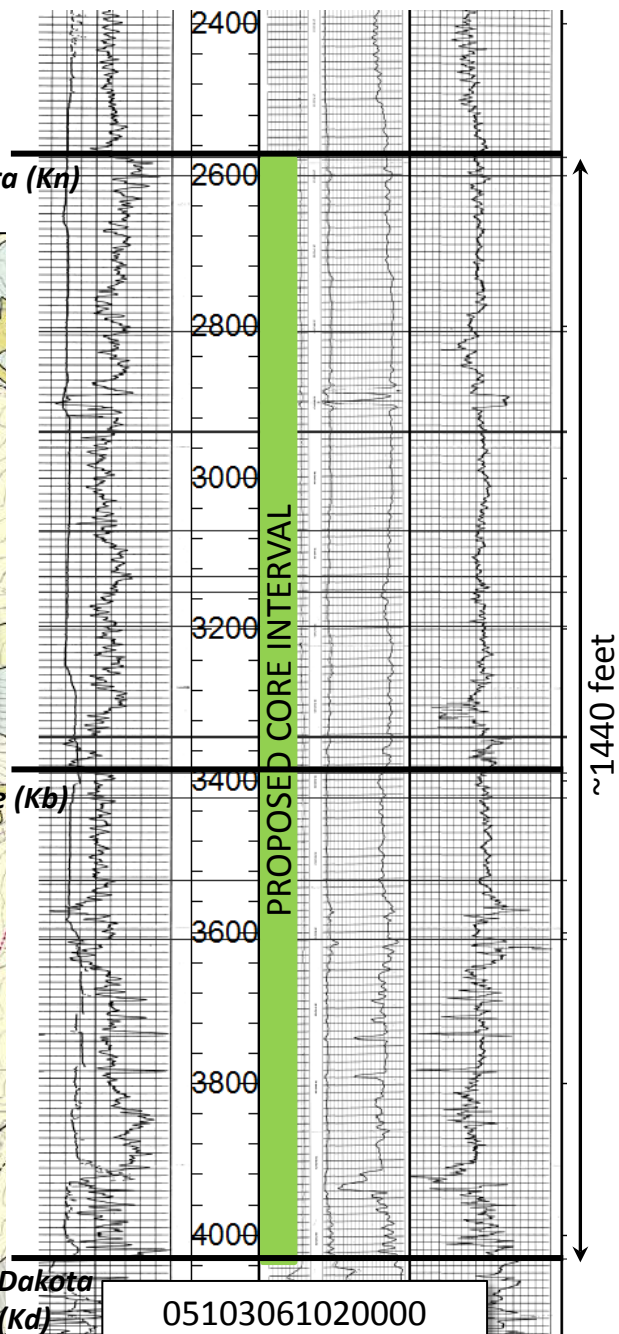
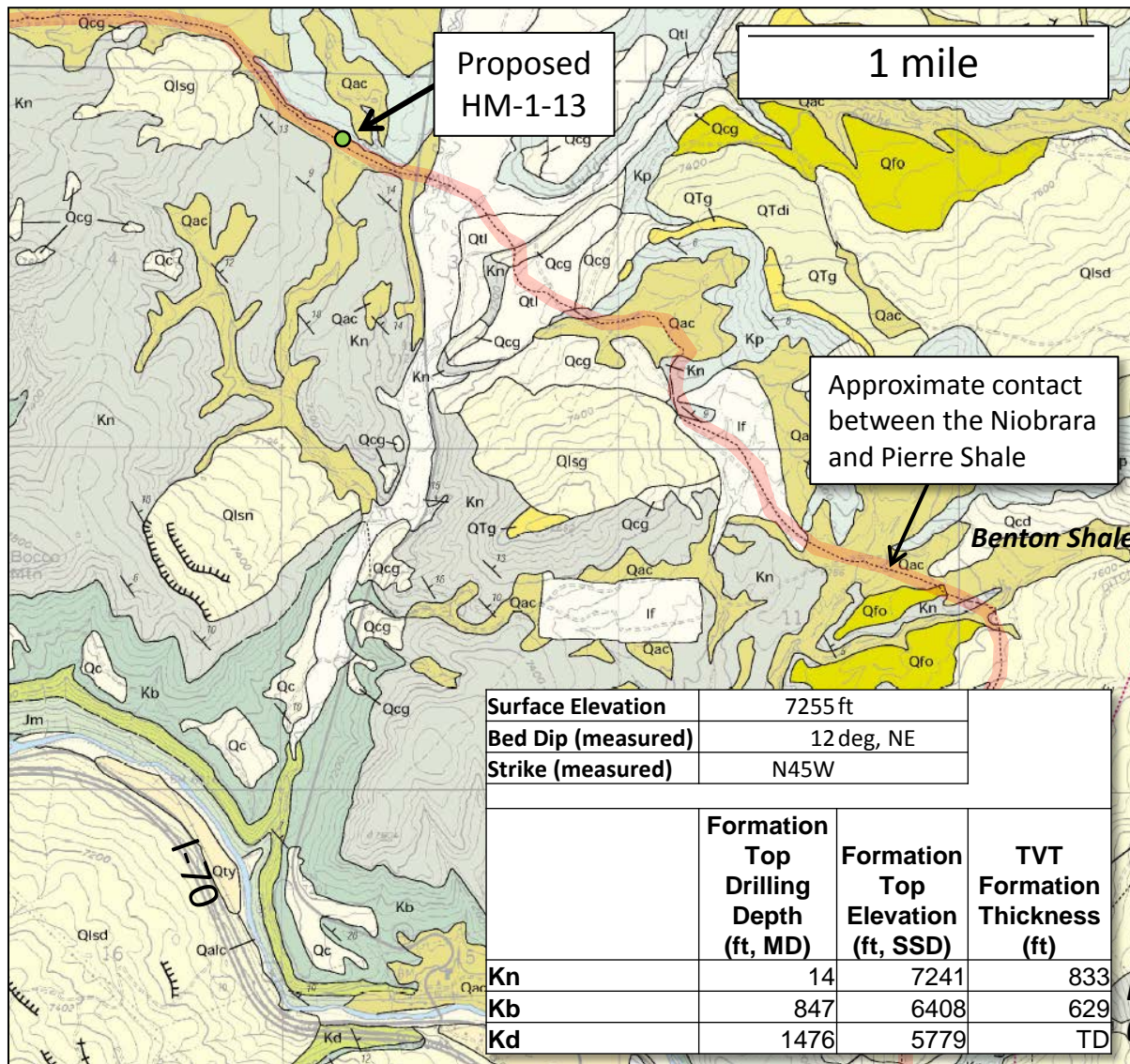


Assumed flat lying strata at type log, GOVERNMENT 1

35 miles NW of proposed coring site

Estimated TST (Niobrara-Top Dakota) = ~ 1440 feet

# Coring Estimates



05103061020000  
GOVERNMENT 1