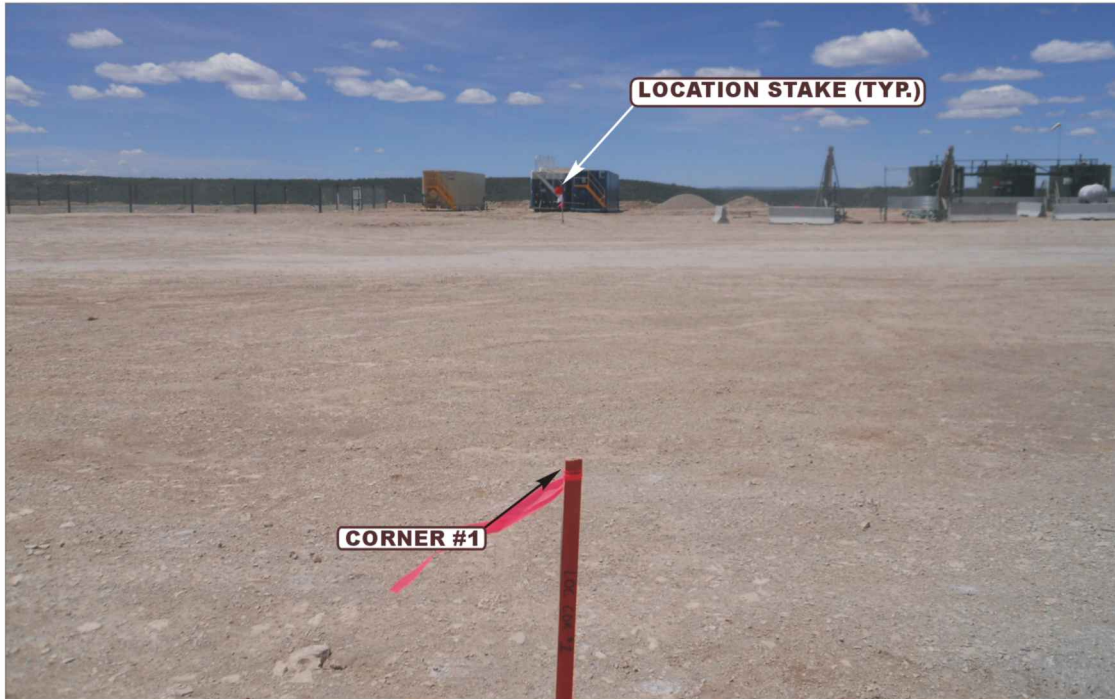


**Encana OIL & GAS (USA) INC.**  
**WELL PAD SG E34 496**  
**LOCATED IN GARFIELD COUNTY, COLORADO**  
**SECTION 34, T4S, R96W, 6th P.M.**



**PHOTO: VIEW FROM CORNER #1 TO LOCATION STAKES**

**CAMERA ANGLE: NORTHWESTERLY**



**PHOTO: VIEW OF EXISTING ACCESS**

**CAMERA ANGLE: NORTHERLY**



**UELS** Uintah Engineering & Land Surveying  
85 South 200 East Vernal, Utah 84078  
(435) 789-1017 \* FAX (435) 789-1813

**LOCATION PHOTOS**

**08** **05** **10**  
MONTH DAY YEAR

TAKEN BY: B.E.B. DRAWN BY: J.L.G. REVISED: 12-19-12

**PHOTO**  
**P1**

**Encana OIL & GAS (USA) INC.**  
**WELL PAD SG E34 496**  
**LOCATED IN GARFIELD COUNTY, COLORADO**  
**SECTION 34, T4S, R96W, 6th P.M.**



**PHOTO: VIEW OF LOCATION STAKES**

**CAMERA ANGLE: NORTHERLY**



**PHOTO: VIEW OF LOCATION STAKES**

**CAMERA ANGLE: SOUTHERLY**



**UELS** Uintah Engineering & Land Surveying  
85 South 200 East Vernal, Utah 84078  
(435) 789-1017 \* FAX (435) 789-1813

**LOCATION PHOTOS**

**08** **05** **10**  
MONTH DAY YEAR

TAKEN BY: B.E.B. DRAWN BY: J.L.G. REVISED: 12-19-12

**PHOTO**  
**P2**



**Encana OIL & GAS (USA) INC.**  
**WELL PAD SG E34 496**  
LOCATED IN GARFIELD COUNTY, COLORADO  
SECTION 34, T4S, R96W, 6th P.M.



PHOTO: VIEW OF LOCATION STAKES

CAMERA ANGLE: EASTERLY



PHOTO: VIEW OF LOCATION STAKES

CAMERA ANGLE: WESTERLY



- Since 1964 -

**U  
E  
L  
S**

Uintah Engineering & Land Surveying  
85 South 200 East Vernal, Utah 84078  
(435) 789-1017 \* FAX (435) 789-1813

**LOCATION PHOTOS**

**08** **05** **10**  
MONTH DAY YEAR

TAKEN BY: B.E.B.

DRAWN BY: J.L.G.

REVISED: 12-19-12

PHOTO  
**P3**