



410 17th Street, Suite 1500  
Denver, CO 80202  
(720) 440-6100 phone  
(720) 305-0804 fax

[BonanzaCrk.com](http://BonanzaCrk.com)

18 April 2013

Colorado Oil and Gas Conservation  
Commission  
The Chancery Building  
1120 Lincoln Street, Suite 801  
Denver, CO 80203

Attn: Mr. Matt Lepore, Director

Re: Notice of 318A(I).a.(4)D. Horizontal Wellbore Spacing Unit Proposal  
North Platte Federal K-O-22HNB  
SHL: NWNE (324' FNL, 2561' FEL) Sec 22-5N-63W, 6<sup>TH</sup> PM  
Top of Production: NWNE (470' FNL, 2550' FEL) Sec 22-5N-63W, 6<sup>TH</sup> PM  
Bottom of Production: SWSE (470' FSL, 2600' FEL) Sec 34-5N-63W, 6<sup>TH</sup> PM  
Weld County, Colorado

Mr. Lepore:

Bonanza Creek Energy, Inc. (Bonanza) intends to permit, drill and operate the referenced Niobrara Horizontal Well. As defined by Colorado Oil and Gas Conservation Commission (COGCC) Rule 318A(I).a.(4)D., Bonanza proposes the following wellbore spacing unit:

E/2W/2 & W/2E/2 Sec 22-5N-63W, 6<sup>TH</sup> PM, Weld County, CO – 320 Acres

Bonanza has notified the other owners in the unit and no objections were received. Copies of the notifications are maintained in Bonanza's files.

Bonanza respectfully requests that you review the enclosed wellbore spacing unit documentation and approve the referenced APD.

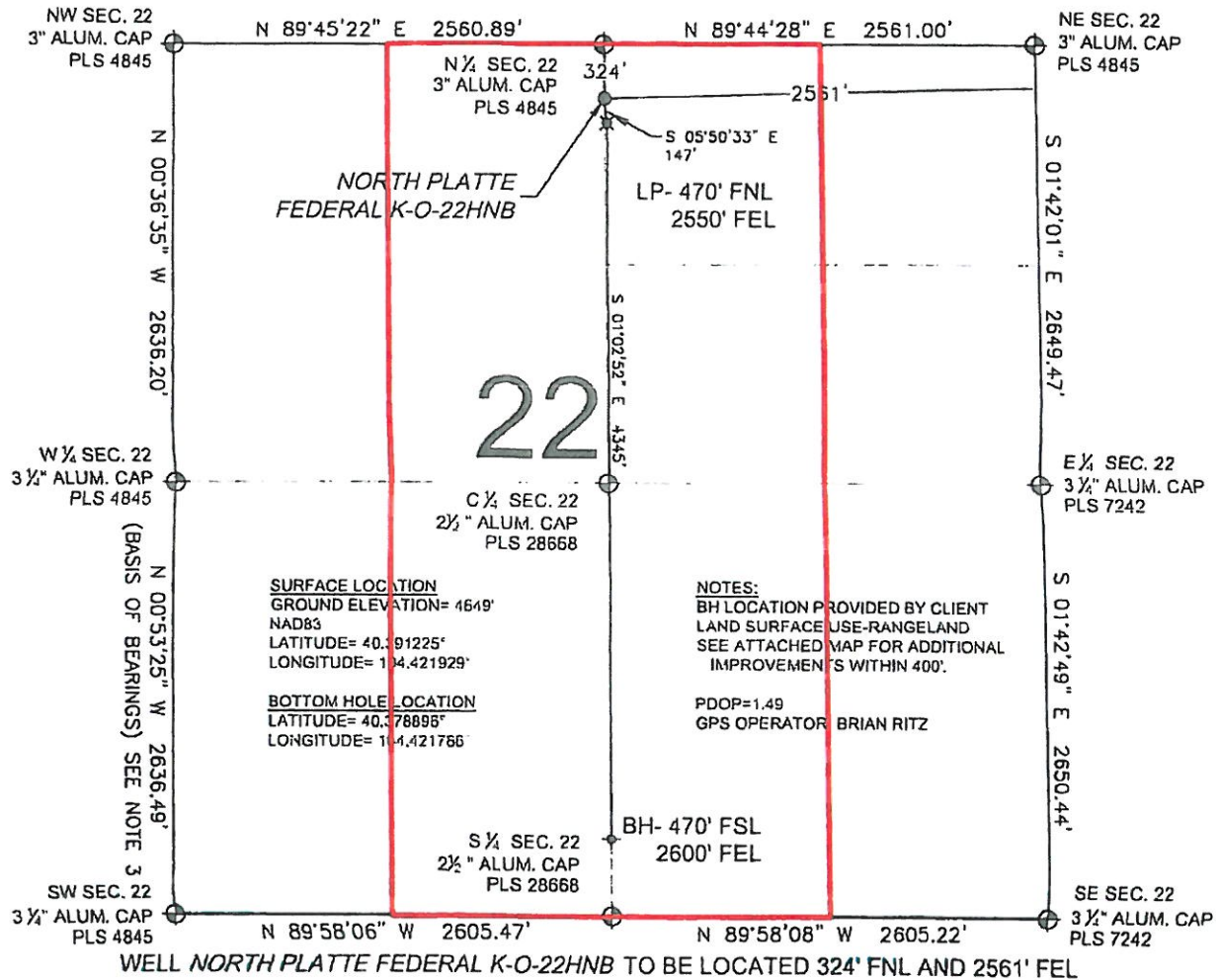
Please do not hesitate to call or email me, directly, at (720) 440-6112 or [kcaplan@bonanzaCrk.com](mailto:kcaplan@bonanzaCrk.com), should you have any questions pertaining to this matter.

Thank you for your cooperation.

Sincerely,  
BONANZA CREEK ENERGY, INC.  
BONANZA CREEK ENERGY OPERATING COMPANY, LLC

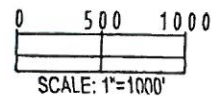
  
Keith S. Caplan  
Sr. Regulatory Specialist

# WELL LOCATION CERTIFICATE



## LEGEND

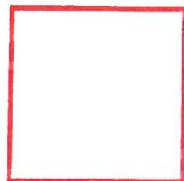
- ⊕ = EXISTING MONUMENT
- ⊕ = PROPOSED WELL
- ⊕ = BOTTOM HOLE
- ⊕ = EXISTING WELL
- BH = BOTTOM HOLE
- ⊕ = LANDING POINT
- LP = LANDING POINT



## NOTES:

1. THIS FIELD SURVEY CONFORMS TO THE MINIMUM

I, L. KELLEY STEVENSON, A LICENSED PROFESSIONAL LAND SURVEYOR IN THE STATE OF COLORADO DO HEREBY CERTIFY TO BONANZA CREEK ENERGY OPERATING, LLC, THAT



Wellbore Spacing Unit Outline



Wellbore Spacing Unit Map

05 March 2013 ksc

North Platte Federal K-O-22HNB  
E/2 W/2 & W/2 E/2 Sec 22 T5N R63W 6th PM  
Weld County, Colorado