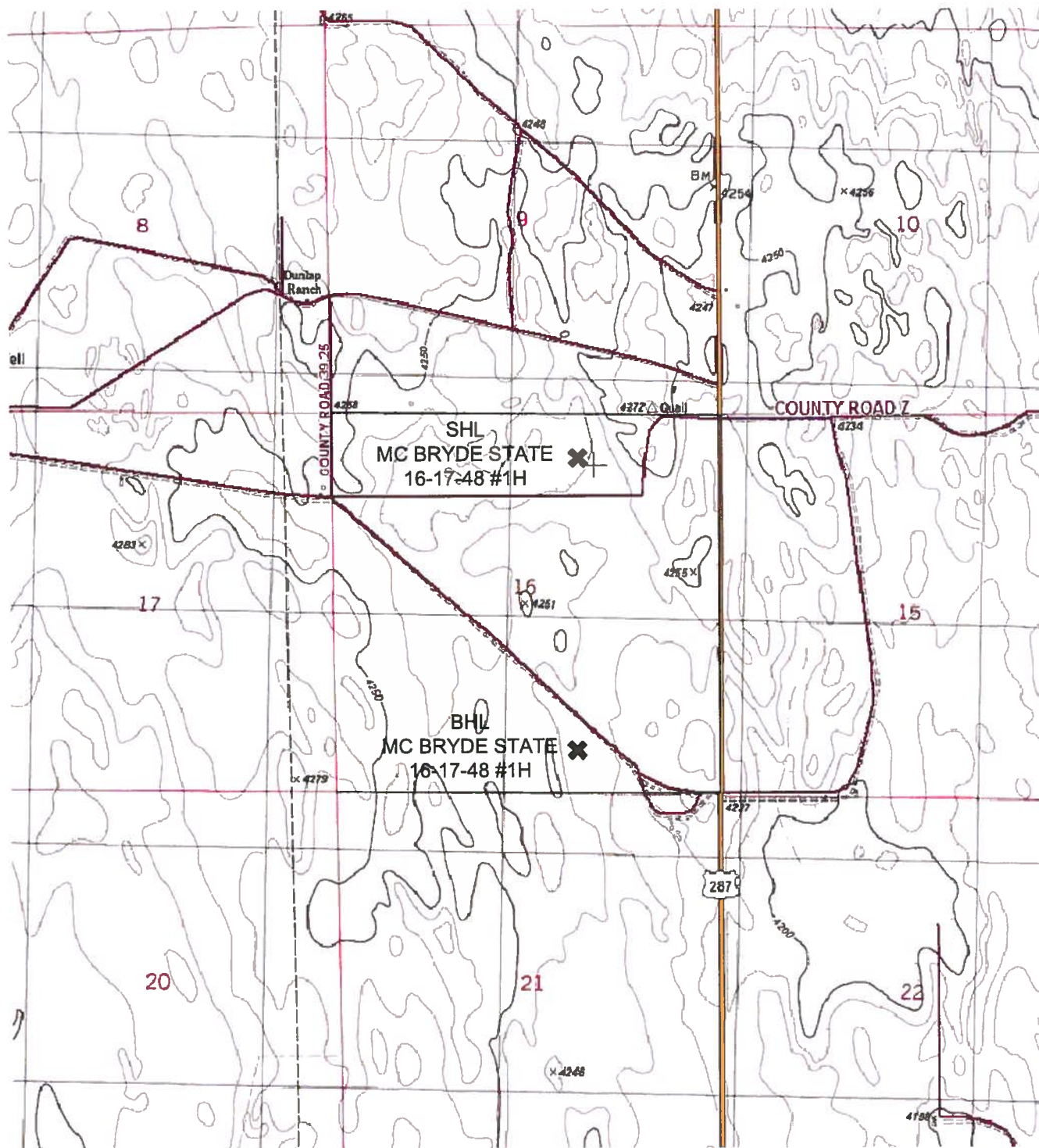


# TOPOGRAPHY MAP

## MC BRYDE STATE 16-17-48 #1H



**POWER**<sup>TM</sup>  
Surveying Company, Inc.  
*Established 1948*

120 W. 84TH AVENUE  
THORNTON, COLORADO 80260  
PH. 303-702-1817  
FAX. 303-702-1488  
WWW.POWERSURVEYING.COM



SCALE 1" = ±2000'

T 17 S  
R 48 W  
KIOWA  
COUNTY

DATE OF FIELD WORK: 04/25/13  
DATE OF COMPLETION: 5/2/13  
PROJECT NUMBER: 501-13-101