

ENCANA OIL & GAS (USA) INC. - EBUS
DO NOT MAIL-3601 N STAGECOACH RD
LONGMONT, Colorado

Echeverria
Echeverria 2B-2H

Ensign/135

Post Job Summary

Cement Intermediate Casing

Date Prepared: 09/15/2012
Version: 1

Service Supervisor: OZBUN, RYAN

Submitted by: MCKAY, ADAM

HALLIBURTON

HALLIBURTON

Wellbore Geometry

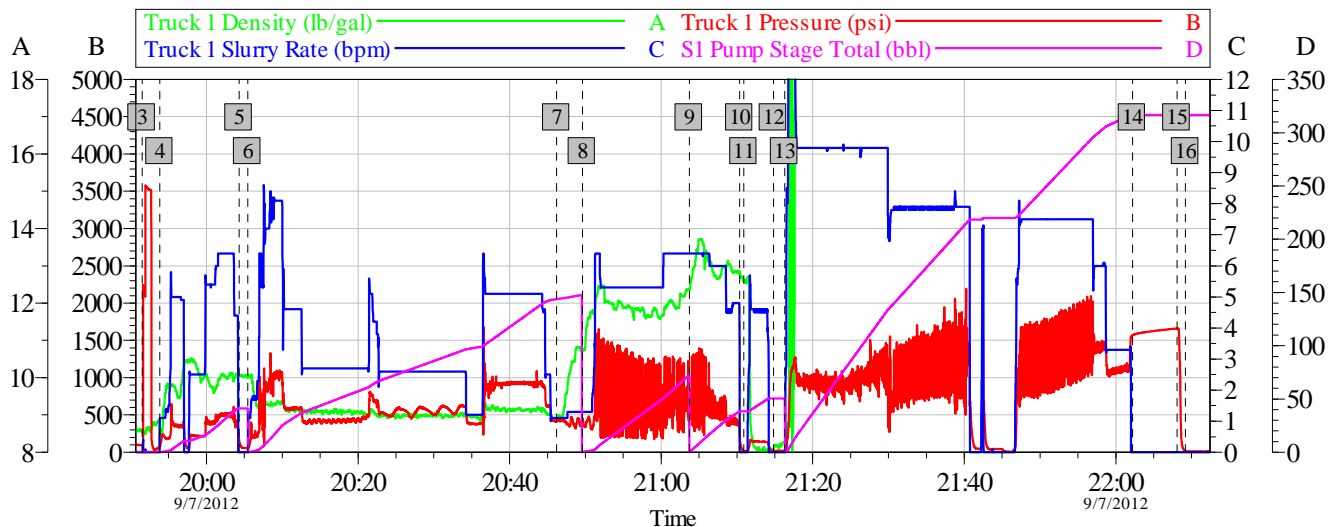
Job Tubulars					MD		TVD		Excess	Shoe Joint Length
Type	Description	Size in	ID in	Wt lbm/ft	Top ft	Bottom ft	Top ft	Bottom ft	%	ft
Open Hole Section	Open Hole Section		8.750		955.00	7,502.00	955.00	7,502.00		
Casing	Intermediate Casing	7.00	6.276	26.00	0.00	7,490.00	0.00	7,490.00		93.00
Casing	Surface Casing	9.63	8.921	36.00	0.00	955.00	0.00	955.00		

Pumping Schedule

Stage /Plug #	Fluid #	Fluid Type	Fluid Name	Surface Density lbm/gal	Avg Rate bbl/min	Surface Volume	Downhole Volume
1	1	Spacer	TUNED SPACER III	9.80	4.00	50.0 bbl	50.0 bbl
1	2	Cement Slurry	Tuned Light 10#	10.00	2.00	330.0 sacks	330.0 sacks
1	3	Cement Slurry	Varicem 12#	12.00	5.00	170.0 sacks	170.0 sacks
1	4	Cement Slurry	Varicem 13#	13.00	6.00	100.0 sacks	100.0 sacks

Data Acquisition

ENCANA ECHEVERRIA 2B-2H 7 INCH INTERMEDIATE



Global Event Log								
	Intersection		TID	TIP	TISR		Intersection	
3	Test Lines	19:51:30	8.560	94.00	0.000	4	Pump Spacer 1	19:53:50
5	Drop Bottom Plug	20:04:19	10.09	159.0	0.000	6	Pump Lead Cement	20:05:26
7	Drop Bottom Plug	20:46:12	8.880	417.3	1.100	8	Pump Cement	20:49:36
9	Pump Tail Cement	21:03:43	12.38	663.1	6.400	10	Shutdown	21:10:22
11	Clean Lines	21:10:55	12.58	18.98	0.000	12	Drop Top Plug	21:14:49
13	Pump Displacement	21:16:19	8.299	21.00	0.000	14	Bump Plug	22:02:11
15	Check Floats	22:08:04	243.7	1659	0.000	16	End Job	22:09:12

OptiCem v6.4.10
07-Sep-12 22:35

Service Supervisor Reports

Job Log

Date/Time	Chart #	Activity Code	Pump Rate	Cum Vol	Pump		Pressure (psig)		Comments
09/07/2012 19:51		Start Job							SPOKE WITH COMPANY MAN ABOUT FLUIDS BEING LIGHTER THAN DRILLING MUD COMPANY MAN SAID TO GO AHEAD WITH JOB PUMP TRUCK WOULD NOT MIX ON ADC HAD TO HAND MIX DOWNHOLE DENSOMETER WAS ALSO NO WORKING CORRECTLY AS SEEN ON THE CHART AT THE START OF DISPLACEMENT
09/07/2012 19:51		Test Lines							TEST LINES TO 3500 ALL CHECKED OUT GOOD
09/07/2012 19:53		Pump Spacer 1	6	50					PUMP 50 BBL TUNED SPACER @ 9.8 PPG MIXED ON THE FLY
09/07/2012 20:04		Drop Bottom Plug							PLUG PRE LOADED PLUG DROP WITNESSED BY COMPANY MAN PLUG TRIGGERED TATTLE TAIL AND DEPLOYED
09/07/2012 20:05		Pump Lead Cement	6	137					PUMP 330 SKS TUNED LIGHT 10 PPG 137 BBL MIXED ON THE BATCH MIXER
09/07/2012 20:46		Drop Bottom Plug							PLUG PRE LOADED WITNESSED BY COMPANY MAN PLUG TRIGGERED TATTLE TAIL AND DEPLOYED
09/07/2012 20:49		Pump Cement	6	75.4					PUMP 170 SKS 12 PPG VARICEM 75.4 BBL MIXED ON THE FLY
09/07/2012 21:03		Pump Tail Cement	6	34.9					PUMP 100 SKS 13 PPG VARICEM 34.9 BBL MIXED ON THE FLY
09/07/2012 21:10		Shutdown							SHUTDOWN
09/07/2012 21:10		Clean Lines							WASH PUMPS AND LINES UNTIL CLEAN
09/07/2012 21:14		Drop Top Plug							BROKE CAP OFF PLUG CONTAINER DROPPED TOP PLUG WITNESSED BY COMPANY MAN PLUG TRIGGERED TATTLE TAIL AND DEPLOYED
09/07/2012 21:16		Pump Displacement	8	292.7					PUMP 292.7 BBL MUD DISPLACEMENT HAD TO SHUTDOWN ONCE TO REPLACE GASKET ON STANDPIPE
09/07/2012 22:02		Bump Plug							BUMP PLUG AT 293 BBL AWAY AND 1100 PSI PRESSURED UP TO 1600 HELD FOR 6 MINUTES
09/07/2012 22:08		Check Floats							RELEASED PRESSURE CHECKED FLOATS- FLOATS HELD RECEIVED ALL SPACER BACK AND 13 BBL OF CEMENT TO SURFACE
09/07/2012 22:09		End Job							END JOB

HALLIBURTON

The Road to Excellence Starts with Safety

Sold To #: 340078	Ship To #: 2946266	Quote #:	Sales Order #: 9797324
Customer: ENCANA OIL & GAS (USA) INC. - EBUS		Customer Rep:	
Well Name: Echeverria		Well #: 2B-2H	API/UWI #:
Field: Wattenberg	City (SAP): GILL	County/Parish: Weld	State: Colorado
Contractor: Ensign		Rig/Platform Name/Num: 135	
Job Purpose: Cement Intermediate Casing			
Well Type: Development Well		Job Type: Cement Intermediate Casing	
Sales Person: AARON, WESLEY		Srvc Supervisor: OZBUN, RYAN MBU ID Emp #: 475709	

Job Personnel

HES Emp Name	Exp Hrs	Emp #	HES Emp Name	Exp Hrs	Emp #	HES Emp Name	Exp Hrs	Emp #
BANUELOS, GUADALUPE	0.0	372277	BARNES, BRIAN L	0.0	485204	DIRKS, RICHARD E	0.0	485940
EDWARDS, MICHEAL H	0.0	522592	HOLMES, ANDREW Malcom	0.0	520802	MEADOWS, DANIEL Graham	0.0	500668
OZBUN, RYAN Jacob	0.0	475709	PLIENESS, RYAN	19.3	490745	SINCLAIR, RICHARD	0.0	368195

Equipment

HES Unit #	Distance-1 way	HES Unit #	Distance-1 way	HES Unit #	Distance-1 way	HES Unit #	Distance-1 way
10829457	17 mile	10867419C	17 mile	10972458	17 mile	11019275	17 mile
11064046	17 mile	11488570C	17 mile	11527041C	17 mile	11562570C	17 mile
11605597	17 mile	11748359	17 mile	11764739	17 mile	NA	17 mile

Job Hours

Date	On Location Hours	Operating Hours	Date	On Location Hours	Operating Hours	Date	On Location Hours	Operating Hours
TOTAL			Total is the sum of each column separately					

Job

Formation Name	Formation Depth (MD)	Top	Bottom	Form Type	Job depth MD	Job Depth TVD	Water Depth	Perforation Depth (MD)	From	To
				BHST	7766. ft	7766. ft	8. ft			

Job Times

Date	Time	Time Zone
07 - Sep - 2012	01:00	MST
07 - Sep - 2012	04:10	MST
07 - Sep - 2012	19:45	MST
07 - Sep - 2012	22:10	MST
07 - Sep - 2012	23:30	MST

Well Data

Description	New / Used	Max pressure psig	Size in	ID in	Weight lbm/ft	Thread	Grade	Top MD ft	Bottom MD ft	Top TVD ft	Bottom TVD ft
Open Hole Section				8.75				955.	7502.	955.	7502.
Intermediate Casing	Unknown		7.	6.276	26.		P-110	.	7490.	.	7490.
Surface Casing	Used		9.625	8.921	36.		K-55	.	955.	.	955.

Tools and Accessories

Type	Size	Qty	Make	Depth	Type	Size	Qty	Make	Depth	Type	Size	Qty	Make
Guide Shoe					Packer					Top Plug			
Float Shoe					Bridge Plug					Bottom Plug			
Float Collar					Retainer					SSR plug set			
Insert Float										Plug Container			
Stage Tool										Centralizers			

Miscellaneous Materials

Gelling Agt	Conc	Surfactant	Conc	Acid Type	Qty	Conc	%
Treatment Fld	Conc	Inhibitor	Conc	Sand Type	Size	Qty	

Fluid Data

HALLIBURTON

Stage/Plug #: 1										
Fluid #	Stage Type	Fluid Name	Qty	Qty uom	Mixing Density lbm/gal	Yield ft ³ /sk	Mix Fluid Gal/sk	Rate bbl/min	Total Mix Fluid Gal/sk	
1	TUNED SPACER III	TUNED SPACER III - SBM (483826)	50.00	bbl	9.8	5.78	43.22	4.0		
39.07 gal/bbl		FRESH WATER								
30.27 lbm/bbl		BARITE, 100 LB SK (100003680)								
2	Tuned Light 10#	TUNED LIGHT (TM) SYSTEM (452984)	330.0	sacks	10.	2.33	8.84	4.0	8.84	
8.84 Gal		FRESH WATER								
3	Varicem 12#	VARICEM (TM) CEMENT (452009)	170.0	sacks	12.	2.49	13.92	4.0	13.92	
13.92 Gal		FRESH WATER								
4	Varicem 13#	VARICEM (TM) CEMENT (452009)	100.0	sacks	13.	1.96	11.92	4.0	11.92	
11.92 Gal		FRESH WATER								
5	ClayWeb III			bbl	8.34	.0	.0	.0		
0.2 gal/Mgal		CLA-WEB - TOTE (101985045)								
Calculated Values		Pressures		Volumes						
Displacement		Shut In: Instant		Lost Returns		Cement Slurry		Pad		
Top Of Cement		5 Min		Cement Returns		Actual Displacement		Treatment		
Frac Gradient		15 Min		Spacers		Load and Breakdown		Total Job		
Rates										
Circulating		Mixing		Displacement		Avg. Job				
Cement Left In Pipe	Amount	93 ft	Reason	Shoe Joint						
Frac Ring # 1 @	ID		Frac ring # 2 @	ID		Frac Ring # 3 @	ID		Frac Ring # 4 @	ID
The Information Stated Herein Is Correct				Customer Representative Signature						