

ENCANA OIL & GAS (USA) INC. - EBUS

Echeverria
Echeverria 2B-2H

Ensign/135

Post Job Summary

Cement Production Casing

Date Prepared: 09/16/2012
Version: 1

Service Supervisor: PICKELL, CHRISTOPHER

Submitted by: MCKAY, ADAM

HALLIBURTON

HALLIBURTON

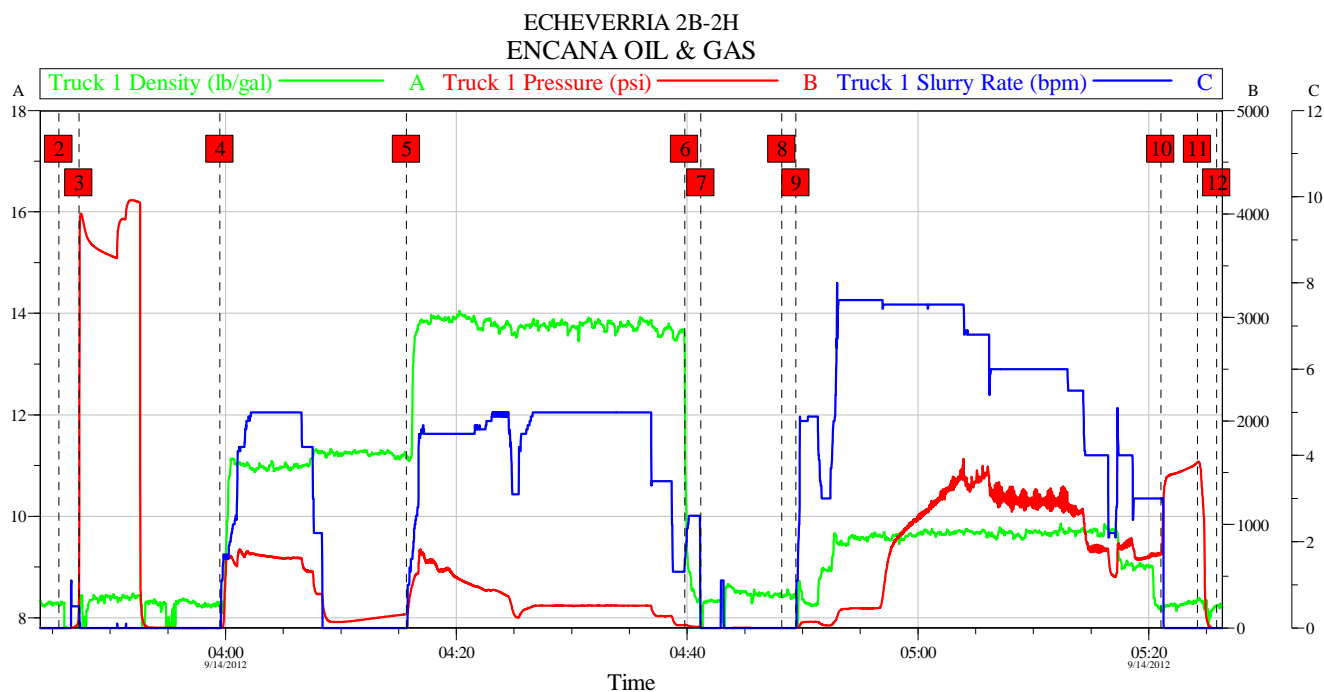
Wellbore Geometry

Job Tubulars					MD		TVD		Excess	Shoe Joint Length
Type	Description	Size in	ID in	Wt lbm/ft	Top ft	Bottom ft	Top ft	Bottom ft	%	ft
Casing	Production Casing	4.50	4.000	11.60	0.00	11,833.00	0.00			45.00
Open Hole Section	Open Hole Section		6.125		7,758.00	11,879.00				
Casing	Intermediate Casing	7.00	6.276	26.00	0.00	7,758.00	0.00	0.00		

Pumping Schedule

Stage /Plug #	Fluid #	Fluid Type	Fluid Name	Surface Density lbm/gal	Avg Rate bbl/min	Surface Volume	Downhole Volume
1	1	Spacer	TUNED SPACER III	11.00	5.00	40.0 bbl	40.0 bbl
1	2	Cement Slurry	EXPANDACEM B2	13.80	5.00	330.0 sacks	330.0 sacks

Data Acquisition



Global Event Log

Intersection	T1P	Intersection	T1P	Intersection	T1P
2 Start Job	03:45:34 0.000	3 Test Lines	03:47:18 226.3	4 Pump Tuned Spacer 11#	03:59:31 -1.000
5 Pump Expandacem 13.8#	04:15:41 131.0	6 Pump Retarded Water	04:39:47 25.00	7 Shutdown	04:41:11 5.001
8 Drop Top Plug	04:48:12 -6.000	9 Pump Displacement	04:49:25 -5.000	10 Bump Plug	05:21:03 719.7
11 Check Floats	05:24:13 1600	12 End Job	05:25:53 -4.000		

Customer: ENCANA OIL & GAS
Well Description: ECHEVERRIA 2B-2H
SERVICE SUPERVISOR CHRISTOPHER PICKELL

Job Date: 14-Sep-2012
UWI: 05-123-35810
SERVICE OPERATOR VAUGHN OTERI

Sales Order #: 9813869

OptiCem v6.4.10
14-Sep-12 05:44

Service Supervisor Reports

Job Log

Date/Time	Chart #	Activity Code	Pump Rate	Cum Vol	Pump		Pressure (psig)		Comments
09/14/2012 03:45		Start Job							
09/14/2012 03:47		Test Lines	1					4000.0	PRESSURE TEST LINES TO 4000 PSI. CHECK FOR VISIBLE LEAKS AND PRESSURE LOSS
09/14/2012 03:59		Pump Spacer 1	5	40				600.0	PUMP TUNED SPACER 11 PPG 6.74 CUFT/SK 42.3 GAL/SK MIXED WITH RIG WATER
09/14/2012 04:15		Pump Cement	5	98.7				200.0	PUMP EXPANDACEM CEMENT 330 SKS 13.8 PPG 1.68 CUFT/SK 7.75 GAL/SK MIXED WITH RIG WATER
09/14/2012 04:39		Pump Spacer 2	2.5	3				20.0	PUMP 3 BBL OF WATER RETARDED WITH SUGAR
09/14/2012 04:41		Shutdown							LINES WERE CLEANED BY THE 3 BBL OF RETARDED WATER PUMPED PRIOR TO SHUTTING DOWN
09/14/2012 04:48		Drop Top Plug							TESCO HEAD STUNG OUT OF CSG. HALLIBURTON TOOL HAND DROPPED PLUG
09/14/2012 04:49		Pump Displacement	8	176.2				1600.0	PUMP THE FIRST 7 BBL OF DISPLACEMENT WITH WATER RETARDED BY SUGAR FOLLOWED BY 10 PPG BRINE WATER
09/14/2012 05:21		Bump Plug	3					719.0	CALCULATED PRESSURE TO LAND WAS 780. PLUG LANDED WITH 719 PSI GOING 750 PSI OVER FINAL LIFT
09/14/2012 05:24		Check Floats							PRESSURE WAS HELD FOR 3 MINUTES THEN RELEASED. FLOATS HELD. 1 BBL BACK TO THE TANKS
09/14/2012 05:25		End Job							

HALLIBURTON

The Road to Excellence Starts with Safety

Sold To #: 340078		Ship To #: 2946266		Quote #:		Sales Order #: 9813869	
Customer: ENCANA OIL & GAS (USA) INC. - EBUS				Customer Rep: ELROD, DENNIS			
Well Name: Echeverria			Well #: 2B-2H			API/UWI #: 05-123-35810	
Field: Wattenberg		City (SAP): GILL		County/Parish: Weld		State: Colorado	
Lat: N 40.173 deg. OR N 40 deg. 10 min. 22.548 secs.				Long: W 104.862 deg. OR W -105 deg. 8 min. 17.7 secs.			
Contractor: Ensign			Rig/Platform Name/Num: 135				
Job Purpose: Cement Production Casing							
Well Type: Development Well			Job Type: Cement Production Casing				
Sales Person: AARON, WESLEY			Srvc Supervisor: PICKELL, CHRISTOPHER			MBU ID Emp #: 396838	

Job Personnel

HES Emp Name	Exp Hrs	Emp #	HES Emp Name	Exp Hrs	Emp #	HES Emp Name	Exp Hrs	Emp #
BANUELOS, GUADALUPE	0.0	372277	EDWARDS, MICHEAL H	0.0	522592	OTERI, VAUGHN Steeves	0.0	443828
PICKELL, CHRISTOPHER Lee	0.0	396838						

Equipment

HES Unit #	Distance-1 way	HES Unit #	Distance-1 way	HES Unit #	Distance-1 way	HES Unit #	Distance-1 way
10867419C	14 mile	10948694	14 mile	11019824C	14 mile	11341988C	14 mile
11764739	14 mile						

Job Hours

Date	On Location Hours	Operating Hours	Date	On Location Hours	Operating Hours	Date	On Location Hours	Operating Hours
TOTAL			Total is the sum of each column separately					

Job

Formation Name					Job Times			
Formation Depth (MD)	Top	Bottom			Called Out	Date	Time	Time Zone
Form Type	BHST				On Location	14 - Sep - 2012	00:00	MST
Job depth MD	11879. ft		Job Depth TVD	11879. ft	Job Started	14 - Sep - 2012	03:45	MST
Water Depth	Wk Ht Above Floor		12. ft		Job Completed	14 - Sep - 2012	05:25	MST
Perforation Depth (MD)	From	To			Departed Loc	14 - Sep - 2012	07:00	MST

Well Data

Description	New / Used	Max pressure psig	Size in	ID in	Weight lbm/ft	Thread	Grade	Top MD ft	Bottom MD ft	Top TVD ft	Bottom TVD ft
Open Hole Section				6.125				7758.	11879.		
Intermediate Casing	Unknown		7.	6.276	26.			.	7758.	.	.
Production Casing	Unknown		4.5	4.	11.6			.	11833.	.	

Tools and Accessories

Type	Size	Qty	Make	Depth	Type	Size	Qty	Make	Depth	Type	Size	Qty	Make
Guide Shoe					Packer					Top Plug			
Float Shoe					Bridge Plug					Bottom Plug			
Float Collar					Retainer					SSR plug set			
Insert Float										Plug Container			
Stage Tool										Centralizers			

Miscellaneous Materials

HALLIBURTON

Gelling Agt		Conc		Surfactant		Conc		Acid Type		Qty		Conc	%
Treatment Fld		Conc		Inhibitor		Conc		Sand Type		Size		Qty	

Fluid Data

Stage/Plug #: 1

Fluid #	Stage Type	Fluid Name	Qty	Qty uom	Mixing Density lbm/gal	Yield ft3/sk	Mix Fluid Gal/sk	Rate bbl/min	Total Mix Fluid Gal/sk
1	TUNED SPACER III	TUNED SPACER III - SBM (483826)	40.00	bbl	11.	6.74	42.3	4.0	
	30.27 lbm/bbl	BARITE, 100 LB SK (100003680)							
	39.07 gal/bbl	FRESH WATER							
2	EXPANDACEM B2	EXPANDACEM (TM) SYSTEM (452979)	330.0	sacks	13.8	1.68	7.75	4.0	7.75
	7.75 Gal	FRESH WATER							
3	ClayWeb III			bbl	8.34	.0	.0	.0	
	0.2 gal/Mgal	CLA-WEB - TOTE (101985045)							

Calculated Values

Pressures

Volumes

Displacement		Shut In: Instant		Lost Returns		Cement Slurry		Pad	
Top Of Cement		5 Min		Cement Returns		Actual Displacement		Treatment	
Frac Gradient		15 Min		Spacers		Load and Breakdown		Total Job	

Rates

Circulating				Mixing				Displacement				Avg. Job							
Cement Left In Pipe			Amount		45 ft		Reason		Shoe Joint										
Frac Ring # 1 @			ID		Frac ring # 2 @			ID		Frac Ring # 3 @			ID		Frac Ring # 4 @			ID	

The Information Stated Herein Is Correct

Customer Representative Signature