

**CARRIZO OIL & GAS INC - EBUS  
DO NOT MAIL - 500 DALLAS ST  
HOUSTON, Texas**

Timbro Ranch 1-41-9-59

EXTREME/19

## **Post Job Summary** **Cement Intermediate Casing**

Date Prepared: 3/2/2012  
Version: 1

Service Supervisor: NIELSON, BRANDON

Submitted by: PLIENESS, RYAN

**HALLIBURTON**

## Wellbore Geometry

---

Job Tubulars					MD		Excess	Shoe Joint Length
Type	Description	Size in	ID in	Wt lbm/ft	Top ft	Bottom ft	%	ft
Casing	Surface Casing	9.63	8.921	36.00	0.00	1,400.00	0.00	
Open Hole Section	Open Hole Section		8.750		1,400.00	6,120.00	35.00	
Casing	Intermediate Casing	7.00	6.276	26.00	0.00	6,120.00	0.00	42.00

# HALLIBURTON

## ***Pumping Schedule***

---

Stage /Plug #	Fluid #	Fluid Type	Fluid Name	Surface Density lbm/gal	Avg Rate bbl/min	Surface Volume	Downhole Volume
1	1	Spacer	TUNED SPACER III	11.00	5.00	20.0 bbl	20.0 bbl
1	2	Cement Slurry	FILLCEM B1 11.8#	11.80	5.00	345.0 sacks	345.0 sacks
1	3	Cement Slurry	ExpandaCem B1 14.6#	14.60	5.00	170.0 sacks	170.0 sacks

# HALLIBURTON

## Service Supervisor Reports

### Job Log

Date/Time	Chart #	Activity Code	Pump Rate	Cum Vol	Pump		Pressure (psig)	Comments
02/13/2012 15:03		Test Lines						PRESSURE TEST TO 3500 PSI NO VISIBLE LEAKS
02/13/2012 15:04		Pump Spacer 1	5	68			300.0	RIG WATER WITH 5 LBS OF BE-3
02/13/2012 15:20		Pump Spacer 2	5	20			308.0	TUNE SPACER II MIXED @ 11 PPG WITH RIG WATER
02/13/2012 15:24		Pump Lead Cement	8	126.5			546.0	345 SKS FILLCEM MIXED @ 11.8 PPG WITH RIG WATER
02/13/2012 15:40		Pump Tail Cement	8	44			246.0	170 SKS EXPANDICEM MIXED @ 14.6 PPG WITH RIG WATER
02/13/2012 15:51		Shutdown						
02/13/2012 15:52		Clean Lines						
02/13/2012 16:04		Drop Top Plug						PUMPED THROUGH A SWAGE BECAUSE THE CASING COLLARE WAS BENT SO DROPPED PLUG WHILE WASHING UP PUMP
02/13/2012 16:11		Pump Displacement	8	229.4			858.0	RIG MUD
02/13/2012 16:39		Bump Plug	3				981.0	CALCULATED PRESSURE TO LAND WAS 921. LANDED PLUG WITH 500 PSI OVER FINAL PUMP PRESSURE.
02/13/2012 16:41		Check Floats						FLOATS HELD
02/13/2012 16:43		End Job						

### The Road to Excellence Starts with Safety

<b>Sold To #:</b> 301228	<b>Ship To #:</b> 2906840	<b>Quote #:</b>	<b>Sales Order #:</b> 9277718
<b>Customer:</b> CARRIZO OIL & GAS INC - EBUS		<b>Customer Rep:</b> HARRIS, TOM	
<b>Well Name:</b> Timbro Ranch		<b>Well #:</b> 1-41-9-59	<b>API/UWI #:</b>
<b>Field:</b> Wattenberg	<b>City (SAP):</b> NEW RAYMER	<b>County/Parish:</b> Weld	<b>State:</b> Colorado
<b>Contractor:</b> EXTREME		<b>Rig/Platform Name/Num:</b> 19	
<b>Job Purpose:</b> Cement Intermediate Casing			
<b>Well Type:</b> Development Well		<b>Job Type:</b> Cement Intermediate Casing	
<b>Sales Person:</b> FLING, MATTHEW		<b>Srvc Supervisor:</b> NIELSON, BRANDON	<b>MBU ID Emp #:</b> 479703

### Job Personnel

HES Emp Name	Exp Hrs	Emp #	HES Emp Name	Exp Hrs	Emp #	HES Emp Name	Exp Hrs	Emp #
CARPENTER, JACOB P	0.0	499500	NIELSON, BRANDON K	0.0	479703	ROMERO, JOSEPH Michael	0.0	512137
TAYLOR, JOSHUA Lin	0.0	485939	VIGIL, NICHOLAS	0.0	443481			

### Equipment

HES Unit #	Distance-1 way	HES Unit #	Distance-1 way	HES Unit #	Distance-1 way	HES Unit #	Distance-1 way
10246780C	105 mile	10857012C	105 mile	10866493C	105 mile	10951212	105 mile
11019275C	105 mile	11398490	105 mile	11764052	105 mile	11764739	105 mile

### Job Hours

Date	On Location Hours	Operating Hours	Date	On Location Hours	Operating Hours	Date	On Location Hours	Operating Hours
<b>TOTAL</b>			Total is the sum of each column separately					

### Job

Formation Name				Date	Time	Time Zone
Formation Depth (MD)	Top		Bottom	Called Out	13 - Feb - 2012	07:00 CST
Form Type	BHST			On Location	13 - Feb - 2012	12:15 CST
Job depth MD	6104. ft			Job Started	13 - Feb - 2012	15:00 CST
Water Depth	Wk Ht Above Floor 5. ft			Job Completed	13 - Feb - 2012	16:43 CST
Perforation Depth (MD)	From		To	Departed Loc	13 - Feb - 2012	17:30 CST

### Well Data

Description	New / Used	Max pressure psig	Size in	ID in	Weight lbm/ft	Thread	Grade	Top MD ft	Bottom MD ft	Top TVD ft	Bottom TVD ft
Open Hole Section				8.75				1400.	6120.	.	.
Intermediate Casing	Unknown		7.	6.276	26.			.	6120.	.	.
Surface Casing	Unknown		9.625	8.921	36.		J-55	.	1400.		

### Tools and Accessories

Type	Size	Qty	Make	Depth	Type	Size	Qty	Make	Depth	Type	Size	Qty	Make
Guide Shoe					Packer					Top Plug			
Float Shoe					Bridge Plug					Bottom Plug			
Float Collar					Retainer					SSR plug set			
Insert Float										Plug Container			
Stage Tool										Centralizers			

### Miscellaneous Materials

Gelling Agt		Conc		Surfactant		Conc		Acid Type		Qty		Conc	%
Treatment Fld		Conc		Inhibitor		Conc		Sand Type		Size		Qty	

Fluid Data									
Stage/Plug #: 1									
Fluid #	Stage Type	Fluid Name	Qty	Qty uom	Mixing Density lbm/gal	Yield ft <sup>3</sup> /sk	Mix Fluid Gal/sk	Rate bbl/min	Total Mix Fluid Gal/sk
1	TUNED SPACER III	TUNED SPACER III - SBM (483826)	20.00	bbl	11.	6.74	42.28	5.0	
2	FILLCEM B1 11.8#	EXTENDACEM (TM) SYSTEM (452981)	345.0	sacks	11.8	2.06	11.25	5.0	11.25
11.25 Gal		FRESH WATER							
3	ExpandaCem B1 14.6#	EXPANDACEM (TM) SYSTEM (452979)	170.0	sacks	14.6	1.46	6.1	5.0	6.1
6.1 Gal		FRESH WATER							

Calculated Values		Pressures		Volumes			
Displacement		Shut In: Instant		Lost Returns		Cement Slurry	
Top Of Cement		5 Min		Cement Returns		Actual Displacement	
Frac Gradient		15 Min		Spacers		Load and Breakdown	

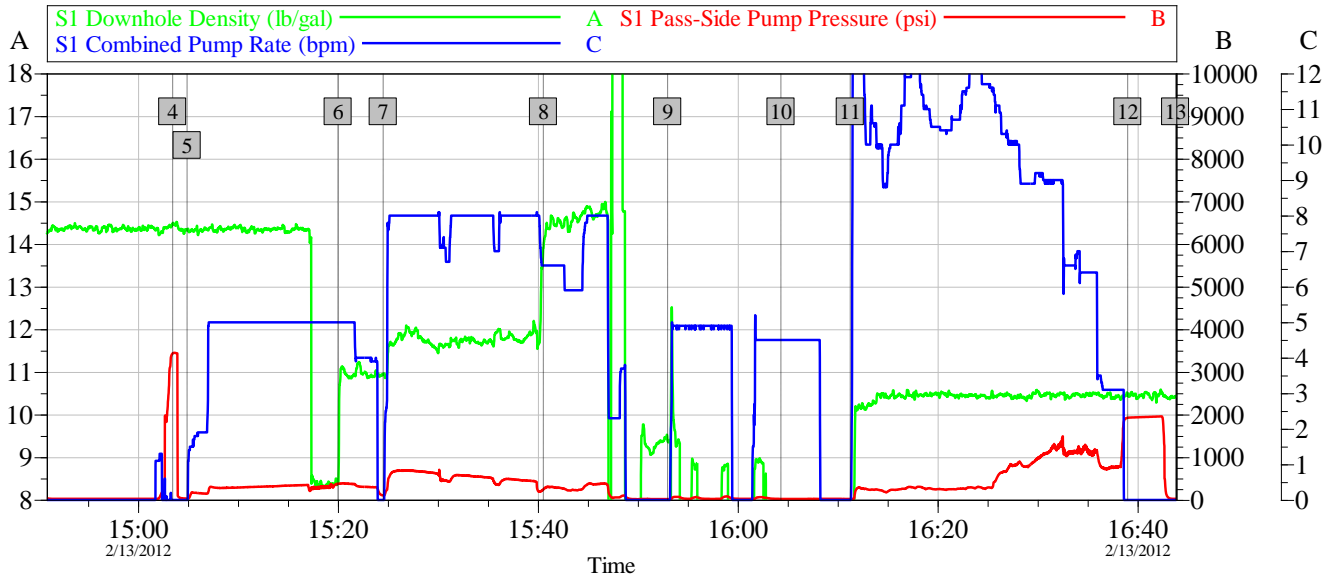
Rates							
Circulating		Mixing		Displacement		Avg. Job	
Cement Left In Pipe	Amount	42 ft	Reason	Shoe Joint			
Frac Ring # 1 @	ID	Frac ring # 2 @	ID	Frac Ring # 3 @	ID	Frac Ring # 4 @	ID

The Information Stated Herein Is Correct	Customer Representative Signature
--	-----------------------------------

# HALLIBURTON

## Data Acquisition

### CARRIZO TIMBRO RANCH 1-41-9-59 7 INTERMEDIATE



#### Global Event Log

Intersection	SPPP	Intersection	SPPP	Intersection	SPPP
1 Starting Job	13:11:53 24.00	2 Start Job	14:50:09 144.8	3 Test Lines	14:50:21 83.00
4 Test Lines	15:03:27 3436	5 Pump Spacer 1	15:04:54 33.00	6 Pump Spacer 2	15:20:00 376.0
7 Pump Lead Cement	15:24:31 106.0	8 Pump Tail Cement	15:40:33 246.0	9 Clean Lines	15:52:58 21.00
10 Drop Top Plug	16:04:19 24.00	11 Pump Displacement	16:11:15 24.00	12 Bump Plug	16:39:01 1927
13 End Job	16:43:47 25.00	14 Ending Job	16:48:21 23.00		

Customer: CARRIZO  
Well Description: INTERMEDIATE

Job Date: 13-Feb-2012  
UWI: 05-123-33946

Sales Order #: 9277718

OptiCem v6.4.10  
13-Feb-12 16:57