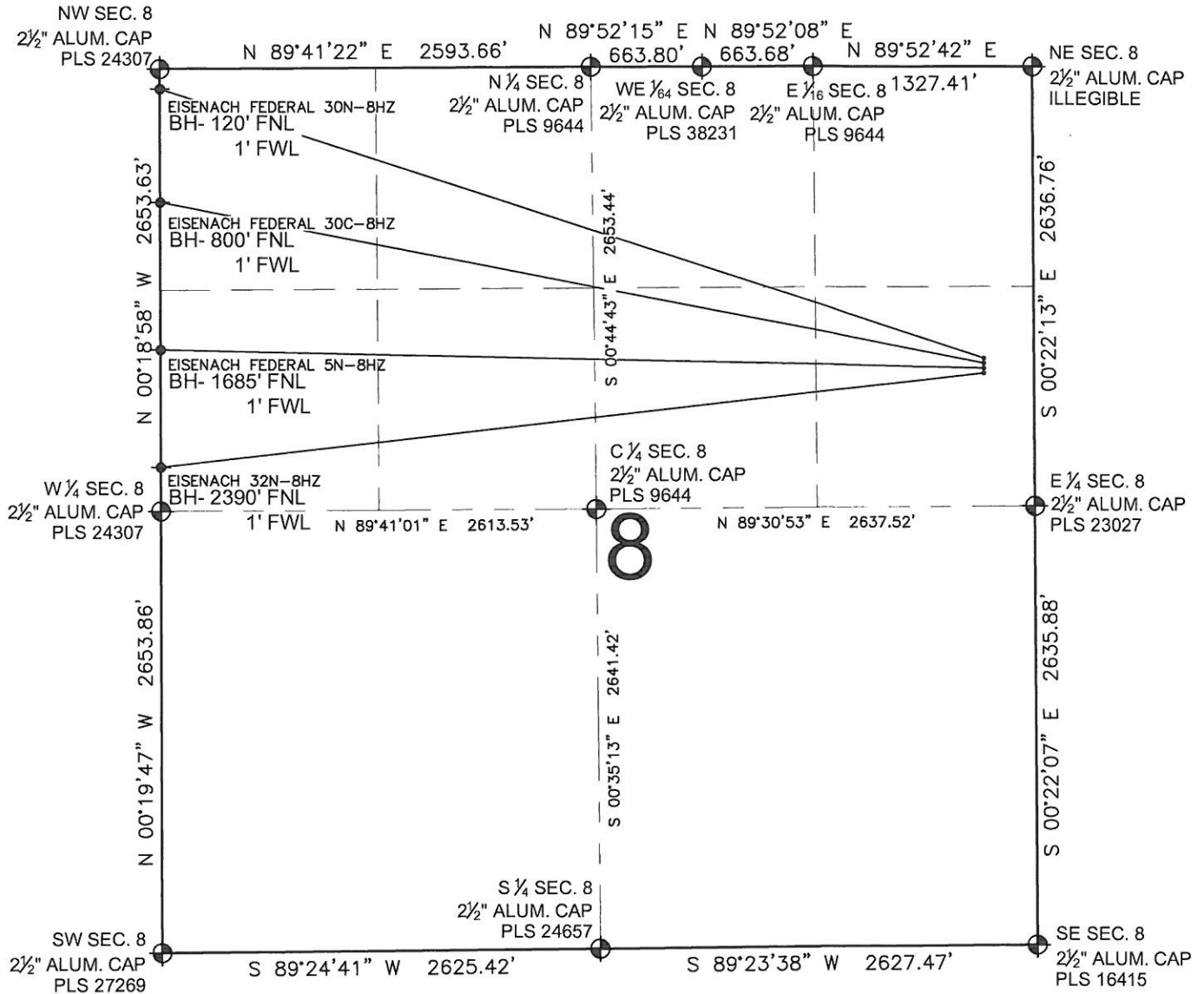


EISENACH FEDERAL 30N-8HZ MULTI-WELL PLAN

SECTION 8, TOWNSHIP 3 NORTH, RANGE 66 WEST, 6TH P.M.



NOTES:

EISENACH 32N-8HZ TO BE AT 1838' FNL, 306' FEL.
 BOTTOM HOLE AT 2390' FNL & 1' FWL.
 EISENACH FEDERAL 5N-8HZ TO BE AT 1808' FNL, 305' FEL.
 BOTTOM HOLE AT 1685' FNL & 1' FWL.
 EISENACH FEDERAL 30C-8HZ TO BE AT 1778' FNL, 305' FEL.
 BOTTOM HOLE AT 800' FNL & 1' FWL.
 EISENACH FEDERAL 30N-8HZ TO BE AT 1748' FNL, 305' FEL.
 BOTTOM HOLE AT 120' FNL & 1' FWL.

LEGEND

= EXISTING MONUMENT
 = BOTTOM HOLE
 BH= BOTTOM HOLE
 = PROPOSED WELL
 = EXISTING WELL

PREPARED BY:

PFS llc
 Petroleum Field Services, LLC
 1801 W. 13th Ave.
 Denver, CO 80204

KERR-MCGEE OIL & GAS ONSHORE LP

FIELD DATE:
01-07-13

DRAWING DATE:
05-09-13

SURFACE LOCATION:

SE 1/4 NE 1/4, SEC. 8, T3N, R66W, 6TH P.M.
 WELD COUNTY, COLORADO

