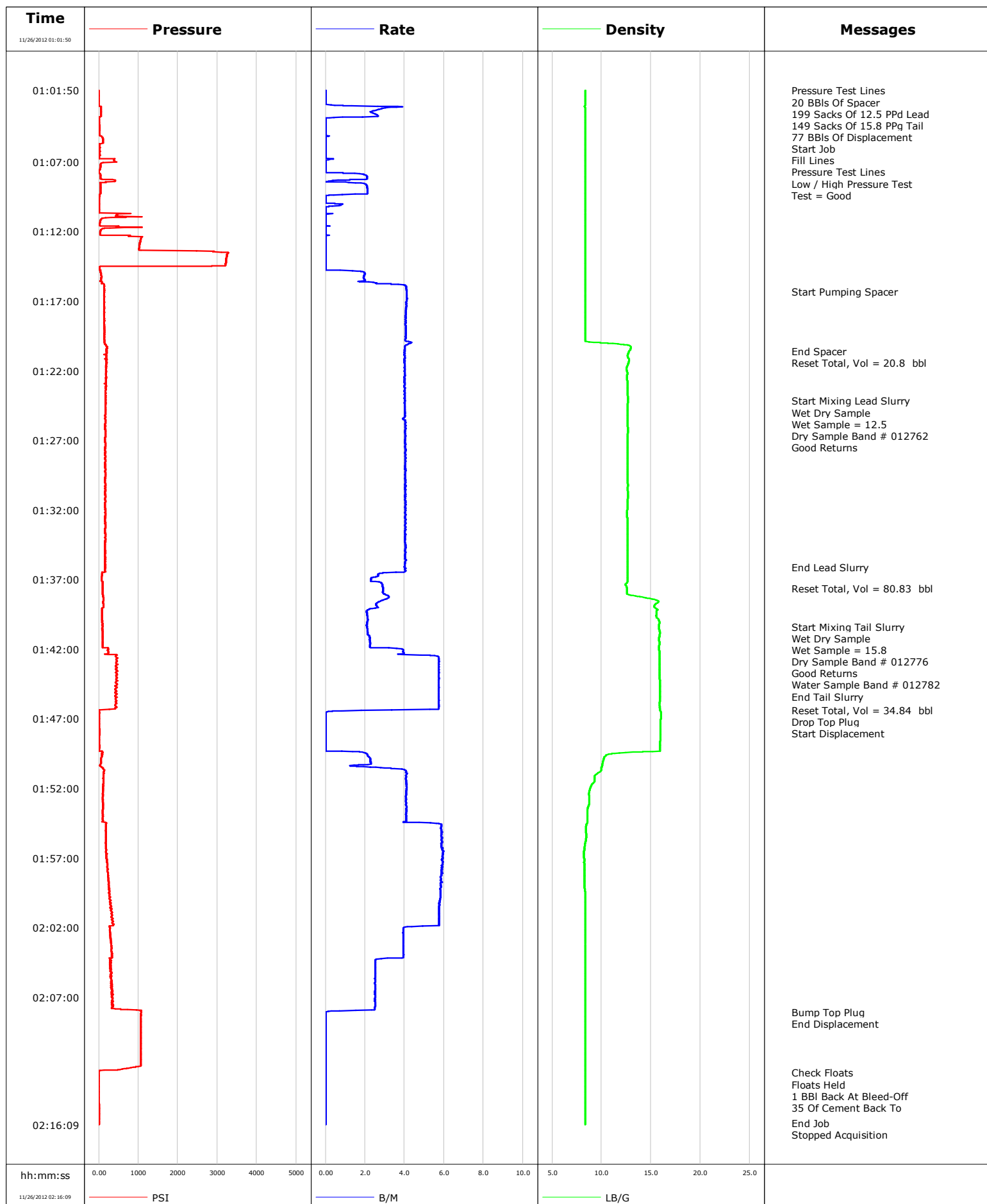


Well	Shideler Fee 6-3DD	Client	Encana
Field	Mamm Creek	SIR No.	CE6H-00012
Engineer	ROGERS / FAIRBROOK	Job Type	Surface
Country	United States	Job Date	11-25-2012





Cementing Service Report

				Customer Encana			Job Number CE6H-00012								
Well Shideler Fee 6-3DD			Location (legal) O31E			Schlumberger Location Grand Junction, CO.			Job Start Nov/25/2012						
Field Mamm Creek		Formation Name/Type Dirty-Sandstone			Deviation		Bit Size		Well MD		Well TVD				
County Garfield		State/Province Colorado			BHP		BHST		BHCT		Pore Press. Gradient				
Well Master 12169340		API/UWI 05045217390000													
Rig Name Patterson 303		Drilled For Gas		Service Via Land		Casing/Liner									
						Depth, ft		Size, in		Weight, lb/ft		Grade		Thread	
Offshore Zone		Well Class New		Well Type Development		1038.0		9.630		36.0		J55		BUSC	
						0.0		0.000		0.0					
Drilling Fluid Type		Max. Density		Plastic Viscosity		Tubing/Drill Pipe									
						Depth,		Size,		Weight,		Grade		Thread	
Service Line Cementing		Job Type Surface													
Max. Allowed Tub. Press		Max. Allowed Ann. Press		WH Connection Single Cement head		Perforations/Open Hole									
						Top,		Bottom,				No. of Shots		Total Interval	
Service Instructions														Diameter	
Treat Down Casing				Displacement				Packer Type				Packer Depth			
Tubing Vol.				Casing Vol.				Annular Vol.				Openhole Vol.			
Casing/Tubing Secured <input checked="" type="checkbox"/>		1 Hole Vol. Circulated prior to Cement <input checked="" type="checkbox"/>				Casing Tools				Squeeze Job					
Lift Pressure				Shoe Type Float				Squeeze Type							
Pipe Rotated <input type="checkbox"/>		Pipe Reciprocated <input type="checkbox"/>		Shoe Depth 1038.0 ft				Tool Type							
No. Centralizers		Top Plugs 1		Bottom Plugs		Stage Tool Type				Tool Depth					
Cement Head Type				Stage Tool Depth				Tail Pipe Size							
Job Scheduled For Nov/25/2012		Arrived on Location Nov/25/2012		Leave Location Nov/25/2012		Collar Type Float				Tail Pipe Depth					
						Collar Depth				Sqz. Total Vol.					
Date	Time 24-hr clock	Treating Pressure PSI	Flow Rate B/M	Density LB/G	Volume BBL	Message									
11/26/2012	00:28:51					Started Acquisition									
11/26/2012	01:01:50	-3	0.0	8.36	0.0										
11/26/2012	01:01:51					Pressure Test Lines									
11/26/2012	01:01:51					20 BBIs Of Spacer									
11/26/2012	01:01:51	-3	0.0	8.36	0.0										
11/26/2012	01:01:53					199 Sacks Of 12.5 PPD Lead									
11/26/2012	01:01:53	-3	0.0	8.36	0.0										
11/26/2012	01:01:54					149 Sacks Of 15.8 PPG Tail									
11/26/2012	01:01:54	-3	0.0	8.36	0.0										
11/26/2012	01:01:55					77 BBIs Of Displacement									
11/26/2012	01:01:55	-3	0.0	8.36	0.0										
11/26/2012	01:02:01					Start Job									
11/26/2012	01:02:01	-3	0.0	8.36	0.0										
11/26/2012	01:02:02					Fill Lines									
11/26/2012	01:02:02	-3	0.0	8.36	0.0										
11/26/2012	01:02:10					Pressure Test Lines									
11/26/2012	01:02:10	-3	0.0	8.36	0.0										
11/26/2012	01:02:13					Low / High Pressure Test									
11/26/2012	01:02:13	-3	0.0	8.36	0.0										
11/26/2012	01:02:15					Test = Good									
11/26/2012	01:02:15	-3	0.0	8.36	0.0										

Well			Field		Job Start		Customer		Job Number	
Shideler Fee 6-3DD			Mamm Creek		Nov/25/2012		Encana		CE6H-00012	
Date	Time 24-hr clock	Treating Pressure PSI	Flow Rate B/M	Density LB/G	Volume BBL	Message				
11/26/2012	01:08:51	41	2.1	8.36	4.1					
11/26/2012	01:13:51	3231	0.0	8.36	5.3					
11/26/2012	01:16:19					Start Pumping Spacer				
11/26/2012	01:16:19	131	4.1	8.35	9.5					
11/26/2012	01:18:51	140	4.1	8.35	19.8					
11/26/2012	01:20:36					End Spacer				
11/26/2012	01:20:36	209	4.0	12.79	26.9					
11/26/2012	01:20:39					Reset Total, Vol = 20.8 bbl				
11/26/2012	01:20:39	203	4.0	12.74	27.1					
11/26/2012	01:23:51	180	4.0	12.66	39.9					
11/26/2012	01:24:09					Start Mixing Lead Slurry				
11/26/2012	01:24:09	168	4.0	12.68	41.2					
11/26/2012	01:24:15					Wet Dry Sample				
11/26/2012	01:24:15	176	4.0	12.66	41.6					
11/26/2012	01:24:16					Wet Sample = 12.5				
11/26/2012	01:24:16	165	4.0	12.66	41.6					
11/26/2012	01:24:17					Dry Sample Band # 012762				
11/26/2012	01:24:17	174	4.0	12.66	41.7					
11/26/2012	01:24:21					Good Returns				
11/26/2012	01:24:21	172	4.0	12.64	42.0					
11/26/2012	01:28:51	169	4.0	12.62	60.1					
11/26/2012	01:33:51	161	4.0	12.62	80.3					
11/26/2012	01:36:08					End Lead Slurry				
11/26/2012	01:36:08	156	4.0	12.60	89.5					
11/26/2012	01:37:36					Reset Total, Vol = 80.83 bbl				
11/26/2012	01:37:36	88	2.9	12.56	93.8					
11/26/2012	01:38:51	111	2.6	15.37	97.5					
11/26/2012	01:40:23					Start Mixing Tail Slurry				
11/26/2012	01:40:23	86	2.1	15.81	100.8					
11/26/2012	01:40:24					Wet Dry Sample				
11/26/2012	01:40:24	86	2.1	15.81	100.8					
11/26/2012	01:40:26					Wet Sample = 15.8				
11/26/2012	01:40:26	87	2.1	15.81	100.9					
11/26/2012	01:40:27					Dry Sample Band # 012776				
11/26/2012	01:40:27	87	2.1	15.81	100.9					
11/26/2012	01:40:31					Good Returns				
11/26/2012	01:40:31	86	2.1	15.81	101.1					
11/26/2012	01:41:36					Water Sample Band # 012782				
11/26/2012	01:41:36	95	2.3	15.85	103.5					
11/26/2012	01:43:51	448	5.7	15.87	114.3					
11/26/2012	01:44:48					End Tail Slurry				
11/26/2012	01:44:48	441	5.7	15.90	119.8					
11/26/2012	01:46:22					Reset Total, Vol = 34.84 bbl				
11/26/2012	01:46:22					Drop Top Plug				
11/26/2012	01:46:22					Start Displacement				
11/26/2012	01:46:22	18	3.4	15.89	128.7					
11/26/2012	01:48:51	11	0.0	15.91	128.8					
11/26/2012	01:53:51	97	4.1	8.57	144.8					
11/26/2012	01:58:51	255	5.8	8.27	173.1					
11/26/2012	02:03:51	331	3.9	8.35	198.4					
11/26/2012	02:08:04					Bump Top Plug				
11/26/2012	02:08:04	1067	0.0	8.36	209.2					
11/26/2012	02:08:05					End Displacement				
11/26/2012	02:08:05	1067	0.0	8.36	209.2					

Well			Field		Job Start	Customer	Job Number
Shideler Fee 6-3DD			Mamm Creek		Nov/25/2012	Encana	CE6H-00012
Date	Time 24-hr clock	Treating Pressure PSI	Flow Rate B/M	Density LB/G	Volume BBL	Message	
11/26/2012	02:12:24					Check Floats	
11/26/2012	02:12:24	-1	0.0	8.37	209.2		
11/26/2012	02:12:25					Floats Held	
11/26/2012	02:12:25	-1	0.0	8.37	209.2		
11/26/2012	02:12:30					1 BBL Back At Bleed-Off	
11/26/2012	02:12:30	-3	0.0	8.37	209.2		
11/26/2012	02:13:14					35 Of Cement Back To	
11/26/2012	02:13:14	-4	0.0	8.37	209.2		
11/26/2012	02:13:51	-4	0.0	8.37	209.2		
11/26/2012	02:16:01					End Job	
11/26/2012	02:16:01	7	0.0	8.37	209.2		

Post Job Summary

Average Pump Rates, bbl/min					Volume of Fluid Injected, bbl						
Slurry 3.9	N2	Mud 0.0	Maximum Rate 6.0		Total Slurry 209.2	Mud 0.0	Spacer 26.9	N2			
Treating Pressure Summary, psi					Breakdown Fluid						
Maximum 3283	Final 7	Average 284	Bump Plug to	Breakdown	Type		Volume		Density		
Avg. N2 Percent		Designed Slurry Volume		Displacement 26.4 bbl	Mix Water Temp		Cement Circulated to Surface?		<input checked="" type="checkbox"/>	Volume	
							Washed Thru Perfs		<input type="checkbox"/>	To	
Customer or Authorized Representative Erasmo Parras				Schlumberger Supervisor ROGERS / FAIRBROOK			Circulation Lost		<input type="checkbox"/>	Job Completed	<input checked="" type="checkbox"/>
							-			-	