

# ConocoPhillips Company

## CONSTRUCTION LAYOUT FOR

YOUNGBERG #10-11-1H  
SECTION 11, T4S, R64W, 6th. P.M.  
1320' FSL 255' FEL

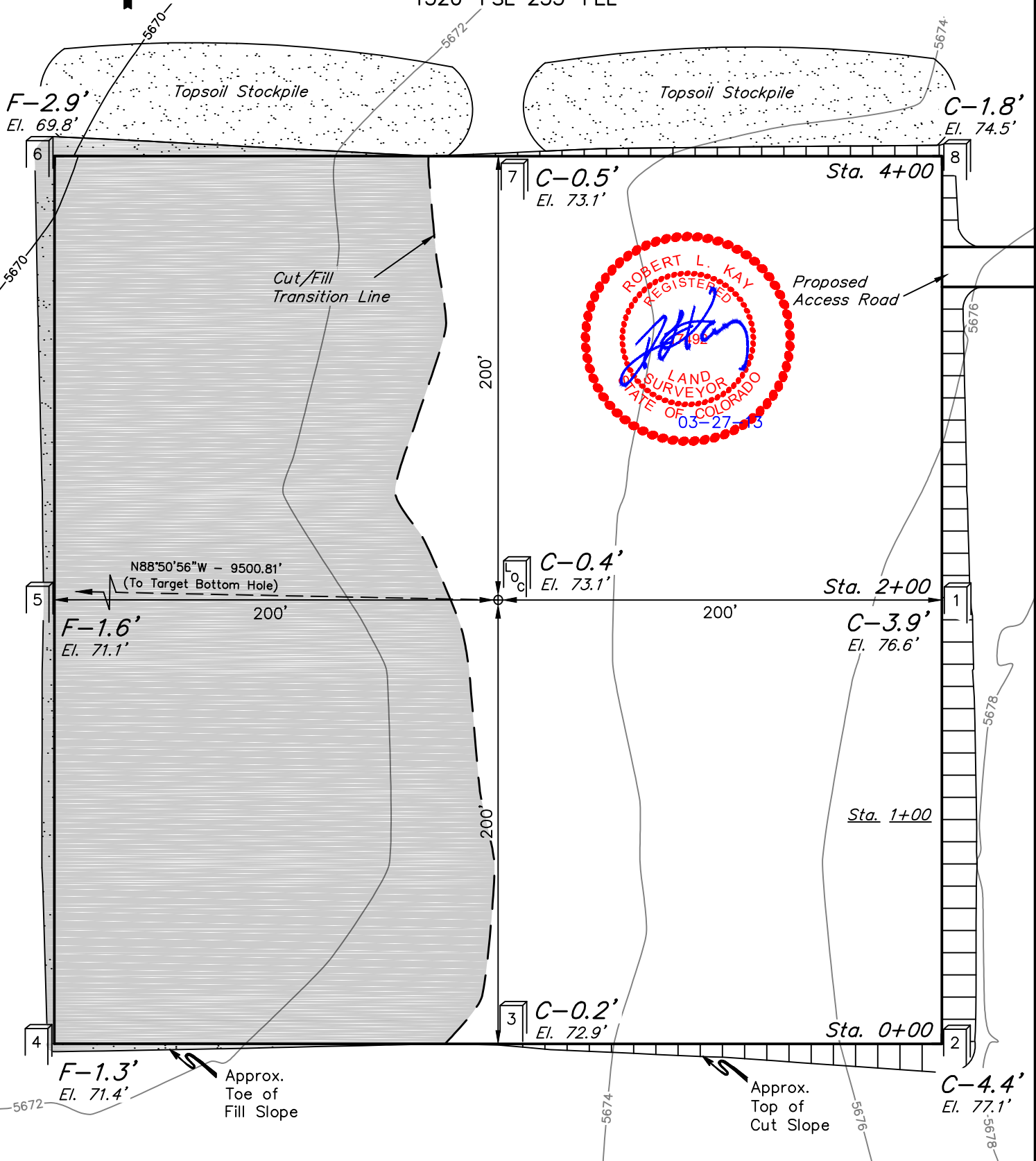
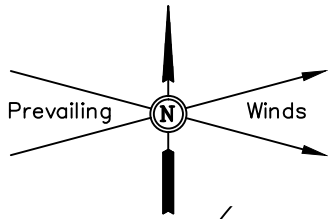
FIGURE #1

SCALE: 1" = 60'

DATE: 10-12-12

DRAWN BY: H.K.W.

REV.: 03-27-13 J.W.



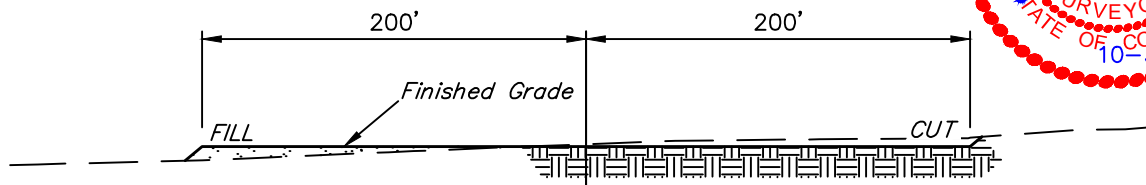
Elev. Ungraded Ground At Loc. Stake = 5673.1'  
FINISHED GRADE ELEV. AT LOC. STAKE = 5672.7'

UINTAH ENGINEERING & LAND SURVEYING  
85 So. 200 East \* Vernal, Utah 84078 \* (435) 789-1017

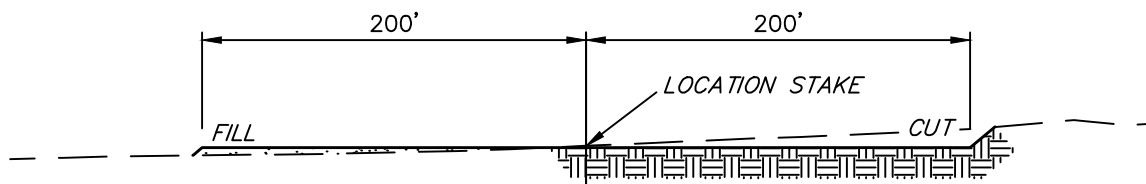
1" = 40'  
 X-Section  
 Scale  
 1" = 100'  
 DATE: 10-12-12  
 DRAWN BY: H.K.W.

**ConocoPhillips Company**  
 CONSTRUCTION LAYOUT CROSS SECTIONS FOR  
 YOUNGBERG #10-11-1H  
 SECTION 11, T4S, R64W, 6th. P.M.  
 1320' FSL 255' FEL

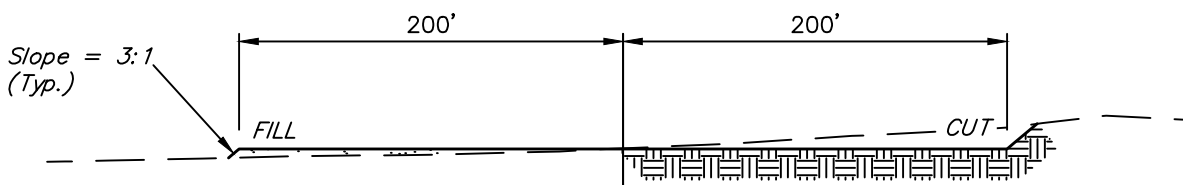
**FIGURE #2**



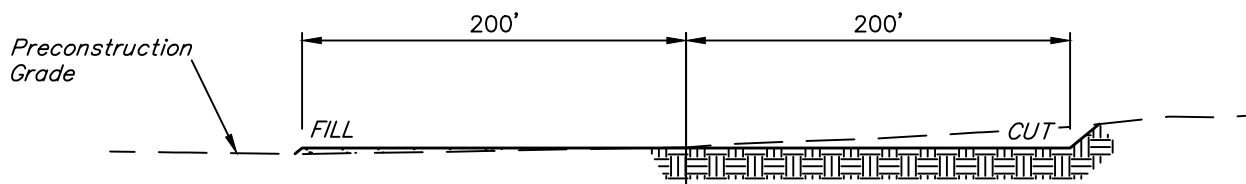
STA. 4+00



STA. 2+00



STA. 1+00



STA. 0+00

**NOTE:**

Topsoil should not be Stripped Below Finished Grade on Substructure Area.

**APPROXIMATE ACREAGES**  
 WELL SITE DISTURBANCE = ± 4.297 ACRES  
 ACCESS ROAD DISTURBANCE = ± 0.048 ACRES  
 TOTAL = ± 4.345 ACRES

**\* NOTE:**  
 FILL QUANTITY INCLUDES 5% FOR COMPACTION

**APPROXIMATE YARDAGES**

(6") Topsoil Stripping = 3,160 Cu. Yds.  
 Remaining Location = 4,670 Cu. Yds.  
**TOTAL CUT = 7,830 CU. YDS.**  
**FILL = 4,670 CU. YDS.**

EXCESS MATERIAL = 3,160 Cu. Yds.  
 Topsoil = 3,160 Cu. Yds.

EXCESS UNBALANCE = 0 Cu. Yds.  
 (After Interim Rehabilitation)

**UINTAH ENGINEERING & LAND SURVEYING**  
 85 So. 200 East \* Vernal, Utah 84078 \* (435) 789-1017