

ConocoPhillips Company
YOUNGBERG #10-11-1H
LOCATED IN ARAPAHOE COUNTY, COLORADO
SECTION 11, T4S, R64W, 6th P.M.

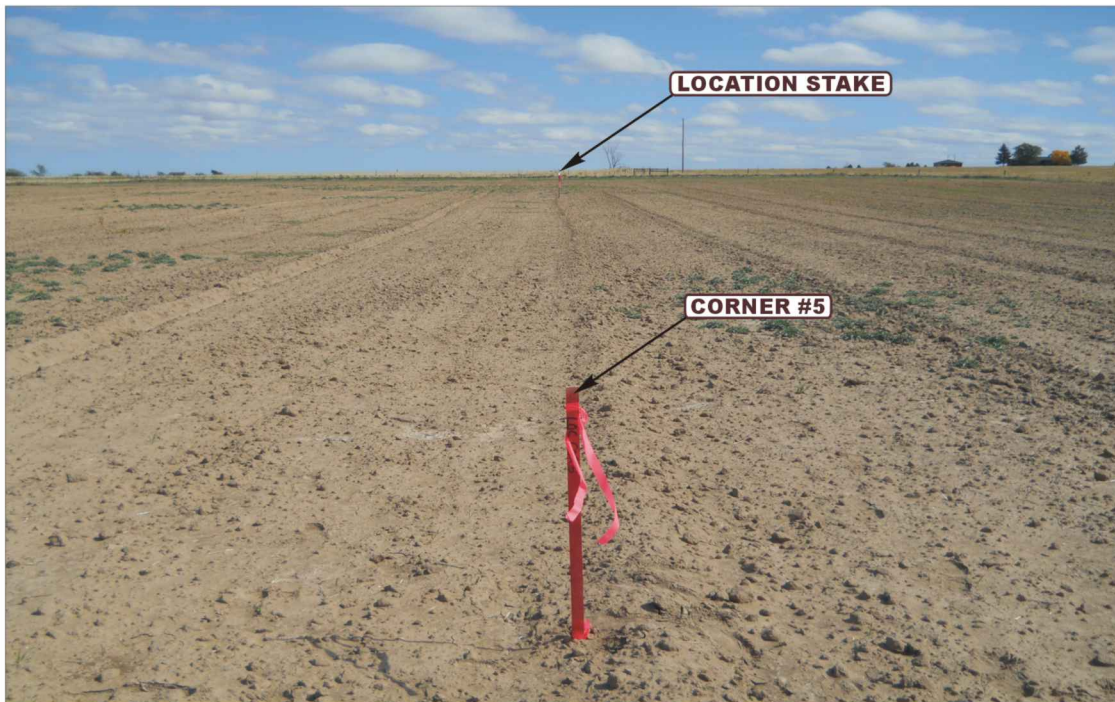


PHOTO: VIEW FROM CORNER #5 TO LOCATION STAKE

CAMERA ANGLE: EASTERLY

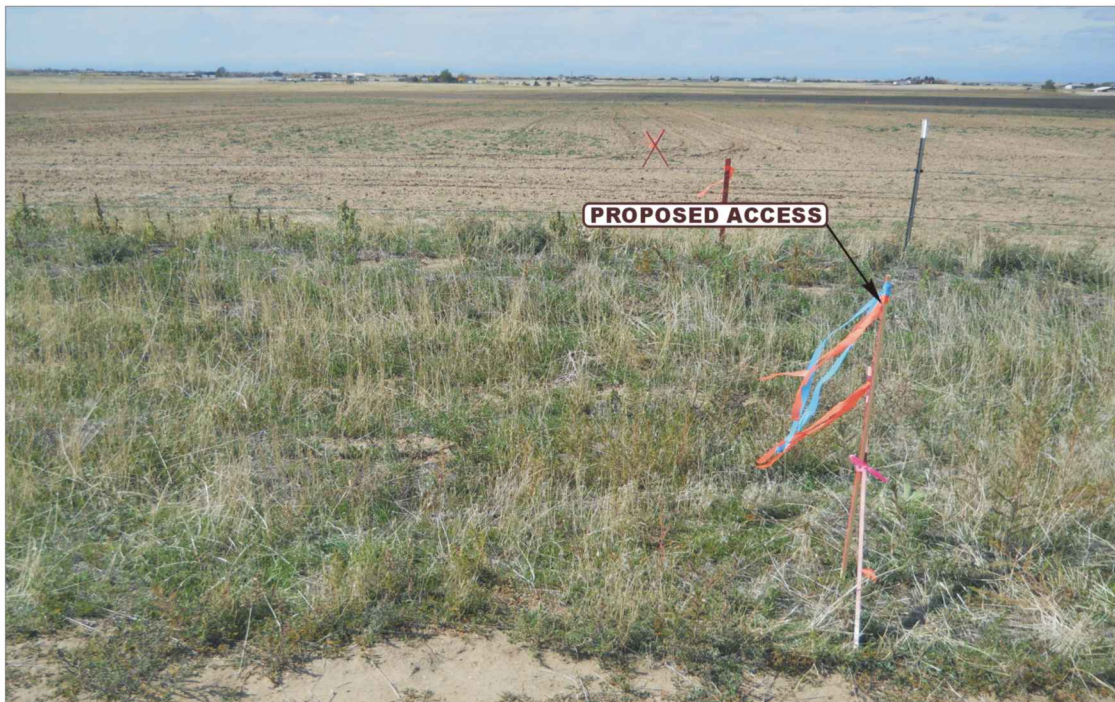


PHOTO: VIEW OF PROPOSED ACCESS

CAMERA ANGLE: WESTERLY



UELS Uintah Engineering & Land Surveying
85 South 200 East Vernal, Utah 84078
(435) 789-1017 * FAX (435) 789-1813

LOCATION PHOTOS

10 **23** **12**
MONTH DAY YEAR

TAKEN BY: Z.B.

DRAWN BY: C.I.

REVISED: 00-00-00

PHOTO
P1

ConocoPhillips Company
YOUNGBERG #10-11-1H
LOCATED IN ARAPAHOE COUNTY, COLORADO
SECTION 11, T4S, R64W, 6th P.M.

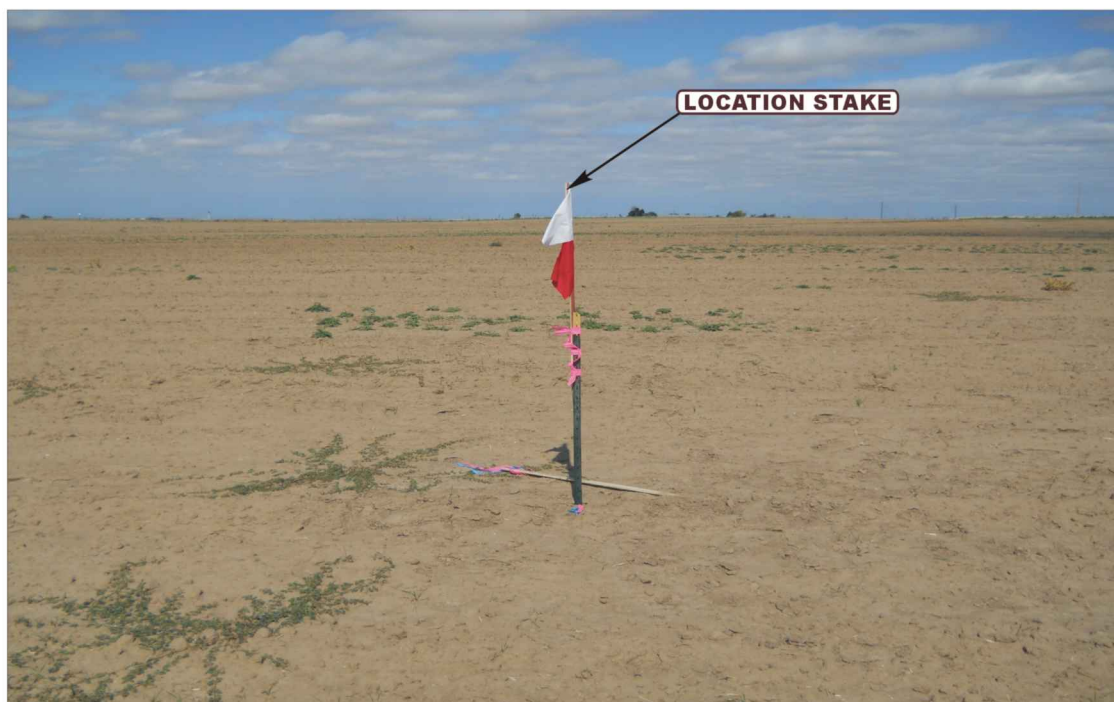


PHOTO: VIEW OF LOCATION STAKE

CAMERA ANGLE: NORTHERLY



PHOTO: VIEW OF LOCATION STAKE

CAMERA ANGLE: EASTERLY



UELS Uintah Engineering & Land Surveying
85 South 200 East Vernal, Utah 84078
(435) 789-1017 * FAX (435) 789-1813

LOCATION PHOTOS

10 **23** **12**
MONTH DAY YEAR

TAKEN BY: Z.B.

DRAWN BY: C.I.

REVISED: 00-00-00

PHOTO
P2

ConocoPhillips Company
YOUNGBERG #10-11-1H
LOCATED IN ARAPAHOE COUNTY, COLORADO
SECTION 11, T4S, R64W, 6th P.M.

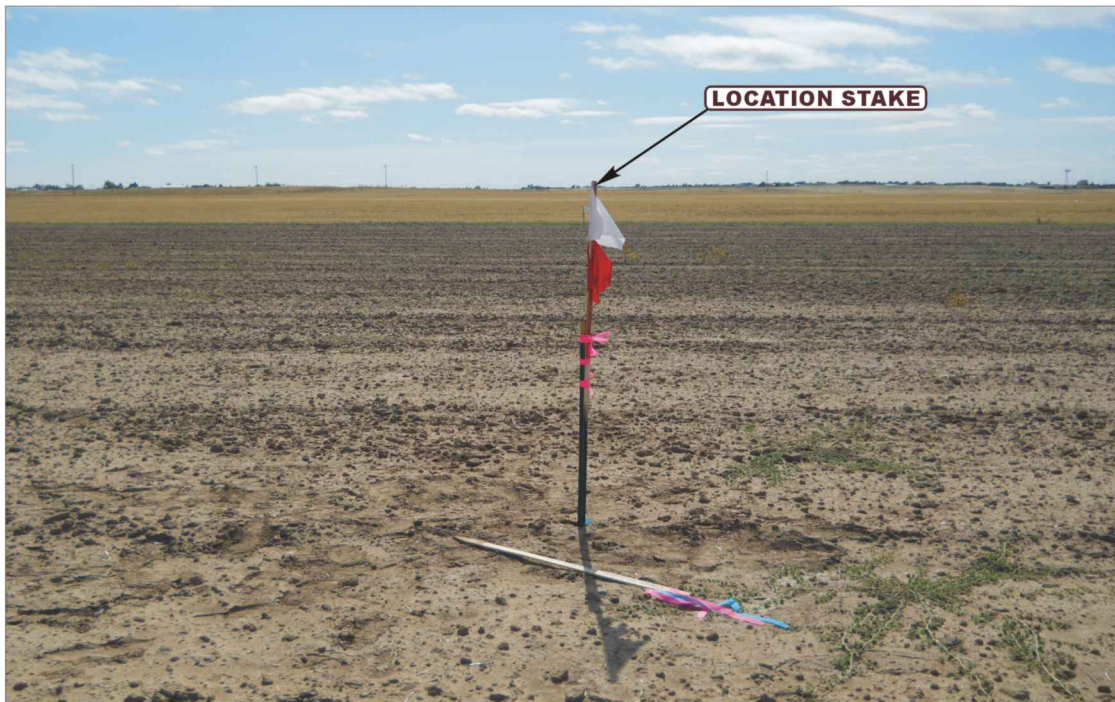


PHOTO: VIEW OF LOCATION STAKE

CAMERA ANGLE: SOUTHERLY



PHOTO: VIEW OF LOCATION STAKE

CAMERA ANGLE: WESTERLY



UELS Uintah Engineering & Land Surveying
85 South 200 East Vernal, Utah 84078
(435) 789-1017 * FAX (435) 789-1813

LOCATION PHOTOS

10 **23** **12**
MONTH DAY YEAR

TAKEN BY: Z.B.

DRAWN BY: C.I.

REVISED: 00-00-00

PHOTO
P3