

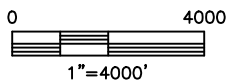
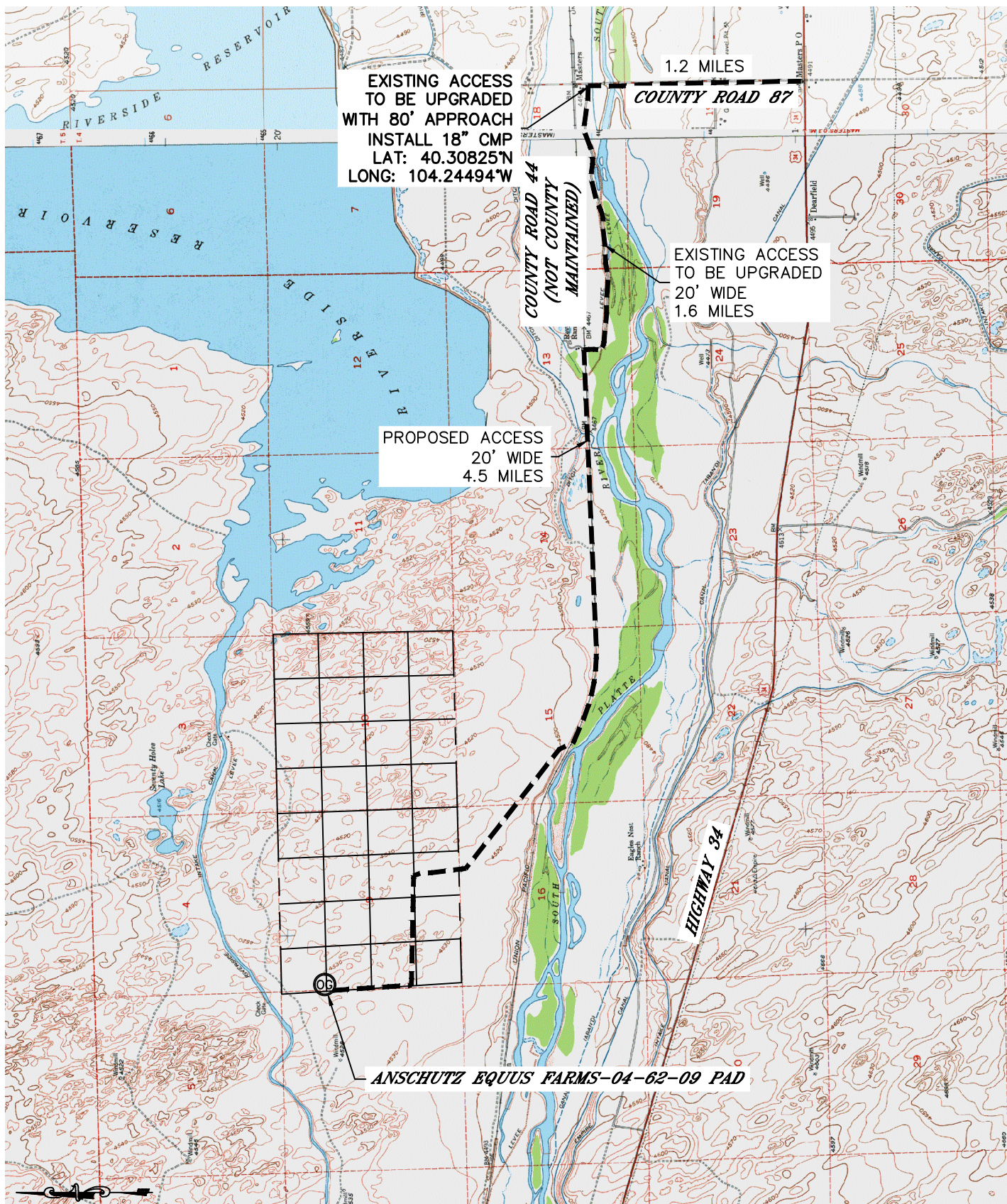


Lat40°, Inc. 1635 Foxtrail Drive, Suite 325 Loveland, CO 970-776-3321

## ACCESS ROAD MAP-A

ANSCHUTZ EQUUS FARMS-04-62-09 PAD

SECTION: 9  
TOWNSHIP: 4N  
RANGE: 62W



### DIRECTIONS:

FROM THE INTERSECTION OF HIGHWAY 34 AND COUNTY ROAD 87, GO NORTH 1.2 MILES TO AN EXISTING ACCESS TO THE WEST. GO WEST ON SAID ACCESS 1.6 MILES TO A PROPOSED ACCESS TO THE WEST. THENCE FOLLOW THE PROPOSED ACCESS WEST, NORTHWEST AND NORTH 4.5 MILES TO PROPOSED WELL PAD.

DATE: 4/1/2013  
PROJECT#: 2013006



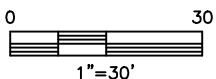
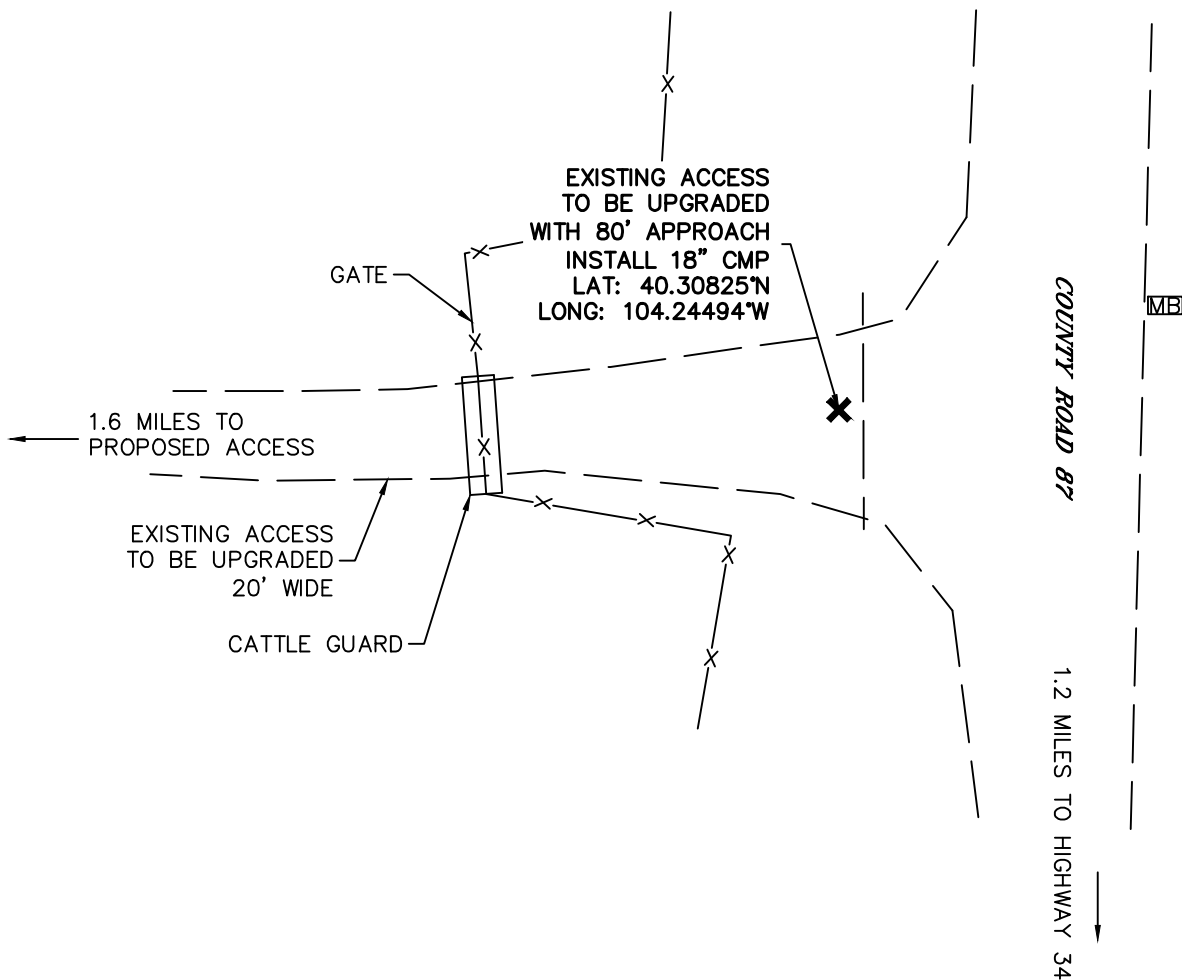


Lat40°, Inc. 1635 Foxtrail Drive, Suite 325 Loveland, CO 970-776-3321

## ACCESS ROAD MAP-B

ANSCHUTZ EQUUS FARMS-04-62-09 PAD

SECTION: 9  
TOWNSHIP: 4N  
RANGE: 62W



PROPOSED PERMANENT ACCESS WILL BE A CLAY BASE WITH A 1.5" GRAVEL TOP 20' WIDE BUILT TO BLM GOLD BOOK STANDARDS. THE MAXIMUM GRADE WILL NOT EXCEED 6%.

DATE: 3/28/2013  
PROJECT#: 2013006



Lat40°, Inc. 1635 Foxtrail Drive, Suite 325 Loveland, CO 970-776-3321

## ACCESS PICTURES

ANSCHUTZ EQUUS FARMS-04-62-09 PAD

SECTION: 9  
TOWNSHIP: 4N  
RANGE: 62W

DATE: 3/21/2013



VIEW NORTH (CR 87)



VIEW WEST



VIEW SOUTH (CR 87)

DATE: 3/28/2013  
PROJECT#: 2013006