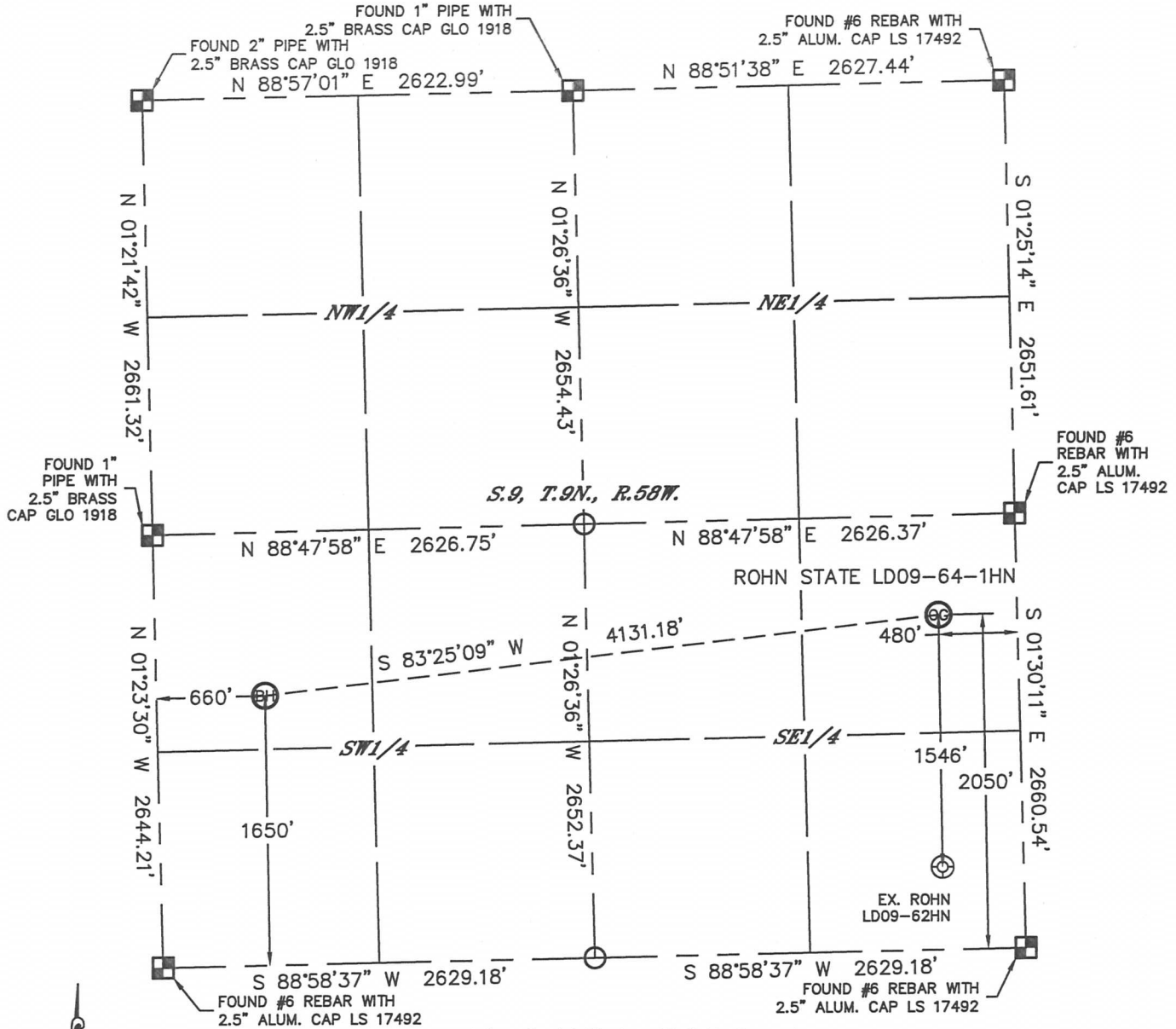


WELL LOCATION CERTIFICATE

SECTION: 9
TOWNSHIP: 9N
RANGE: 58W

THIS MAP DOES NOT REPRESENT A BOUNDARY SURVEY



In accordance with a request from Derrick Worden with Noble Energy Inc. Lat40°, Inc. has determined the surface location of the ROHN STATE LD09-64-1HN to be 2050' from the SOUTH line and 480' from the EAST line and the bottom hole to be 1650' from the SOUTH line and 660' from the WEST line as measured at right angles from the section lines of Section 9, Township 9 North, Range 58 West of the Sixth Principal Meridian, County of Weld, State of Colorado.

I hereby state that this Well Location Certificate was prepared by me, or under my direct supervision, that the fieldwork was completed on 11/29/2012, for and on behalf of Noble Energy Inc. That this is not a Land Survey Plat or an Improvement Survey Plat, and that it is not to be relied upon for establishment of fence, building, or other future improvement lines.

NOTE:

- 1) Bearings shown are Grid Bearings of the Colorado State Plane Coordinate System, North Zone, North American Datum 1983/2007. The lineal dimensions as contained herein are based upon the "U.S. Survey Foot."
- 2) Ground elevations are based on an observed GPS elevation (NAVD 1988 DATUM).
- 3) NEAREST EXISTING WELL: ROHN LD09-62HN, 1546'
- 4) IMPROVEMENTS: See LOCATION DRAWING for all visible improvements within 400' of disturbed area.
- 5) SURFACE USE: RANGELAND
- 6) INSTRUMENT OPERATOR: BRIAN ROTTINGHAUS

NOTE

According to Colorado law, you must commence any legal action based upon any defect in this W.L.C. within three years after you discover such defect. In no event, may any action based upon any defect in this survey be commenced more than ten years after the date of the certificate shown hereon. (13-80-105 C.R.S.)

LEGEND

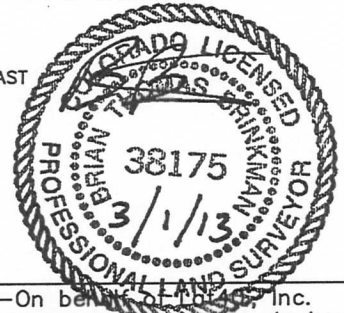
- = ALIQUOT MONUMENT AS DESCRIBED
- = CALCULATED POSITION

SURFACE LOCATION

LAT: 40.76421°N
LONG: 103.86165°W
PDOP: 2.8
ELEV: 4716'
1/4, 1/4: NE1/4SE1/4
NEAREST PROPERTY LINE: 480' EAST

BOTTOM HOLE

LAT: 40.76312°N
LONG: 103.87649°W



Brian T. Brinkman—On behalf of Lat40°, Inc.
Colorado Licensed Professional
Land Surveyor No. 38175
DATE: 2/28/2013
PROJECT#: 2012159

SECTION: 9
TOWNSHIP: 9N
RANGE: 58W