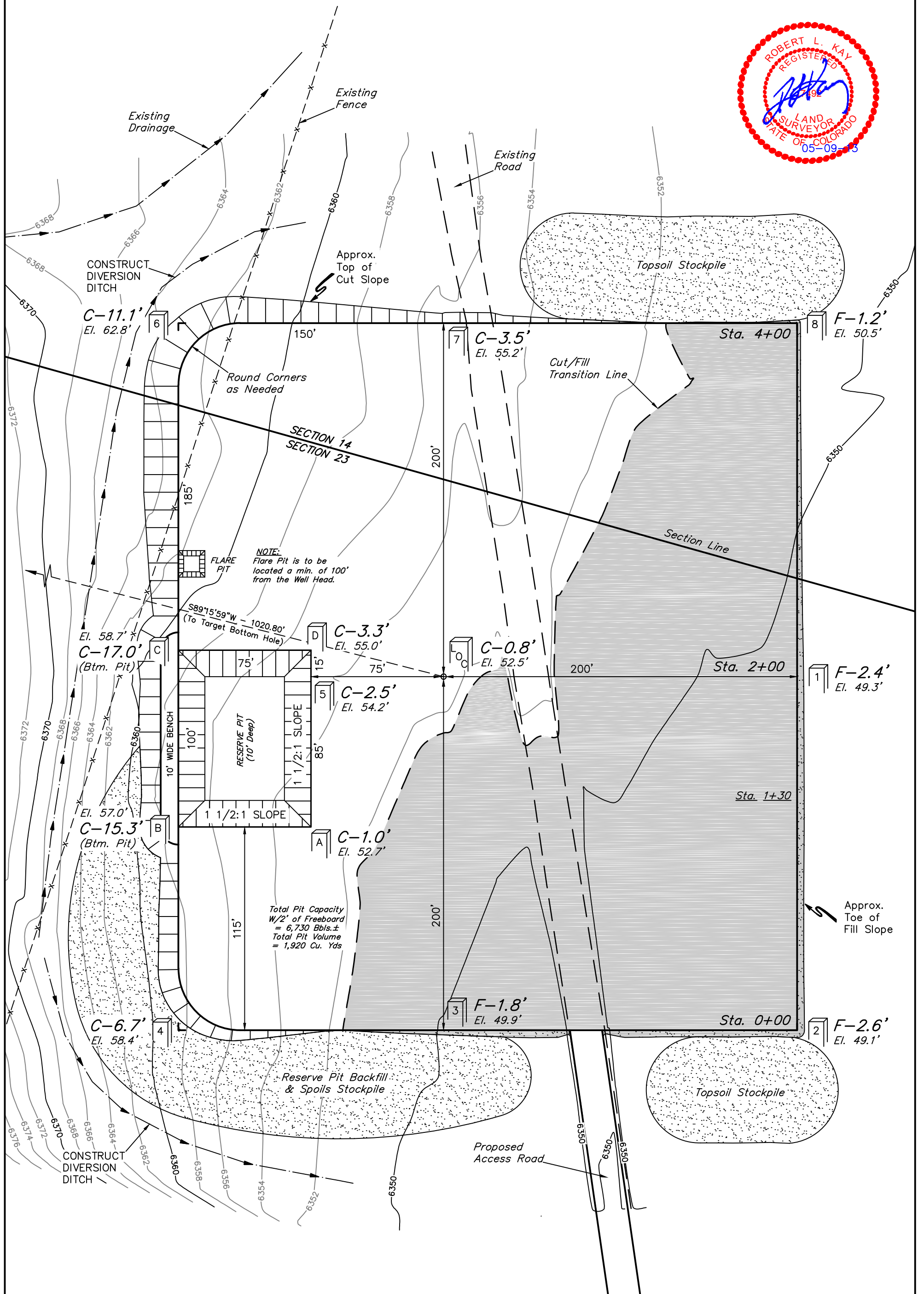


AXIA ENERGY  
CONSTRUCTION LAYOUT FOR  
BULLDOG #22-41V-890  
SECTION 23, T8N, R90W, 6th P.M.  
107' FNL 320' FWL

FIGURE #1

SCALE: 1" = 50'  
DATE: 05-07-13  
DRAWN BY: A.D.



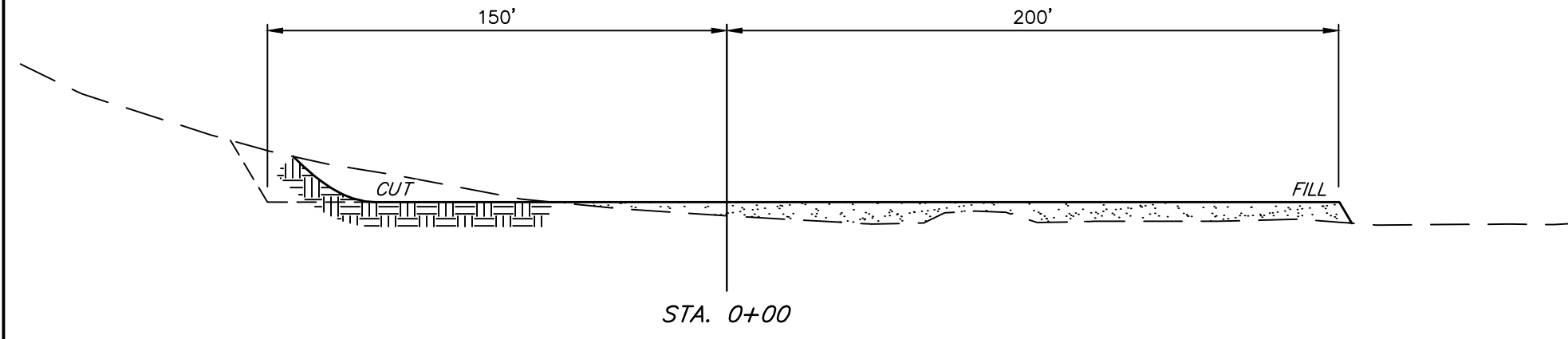
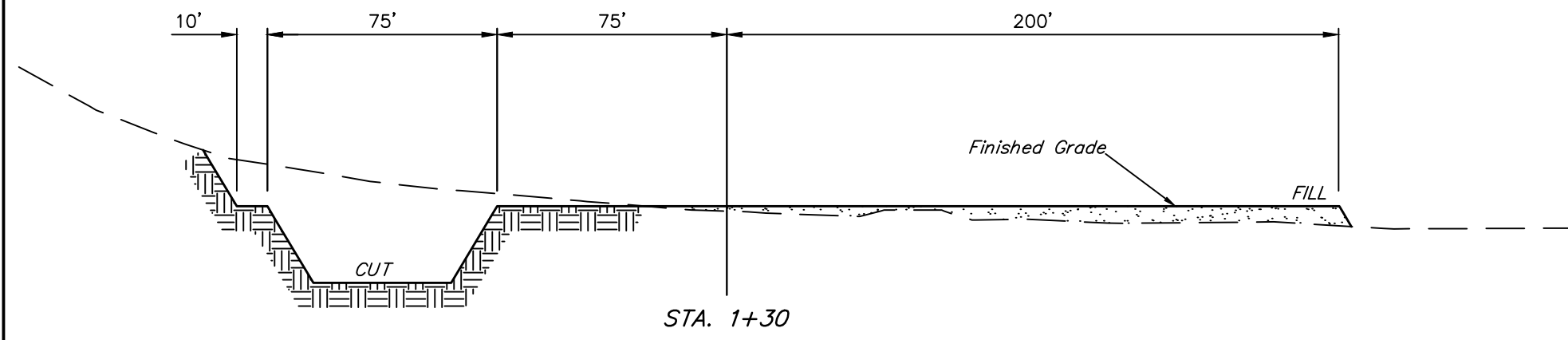
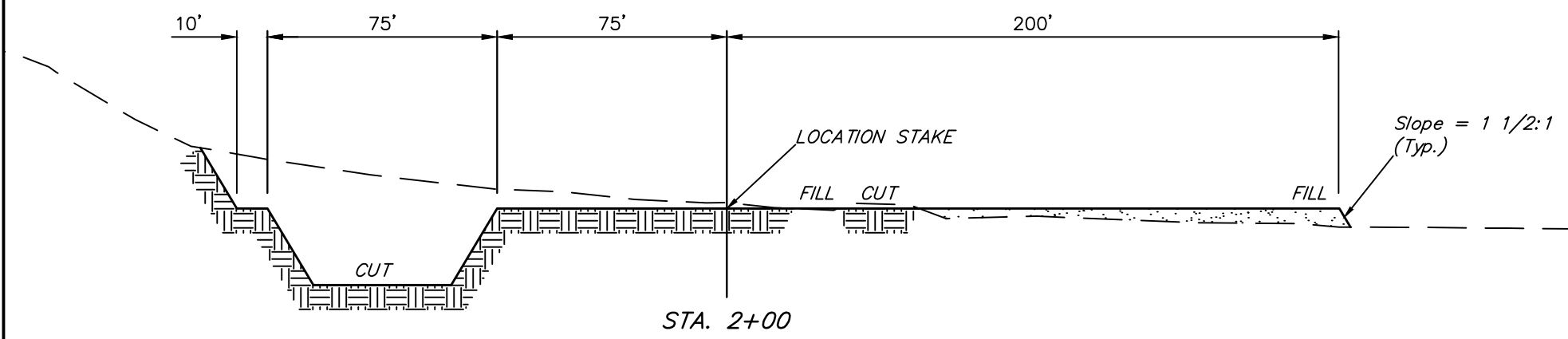
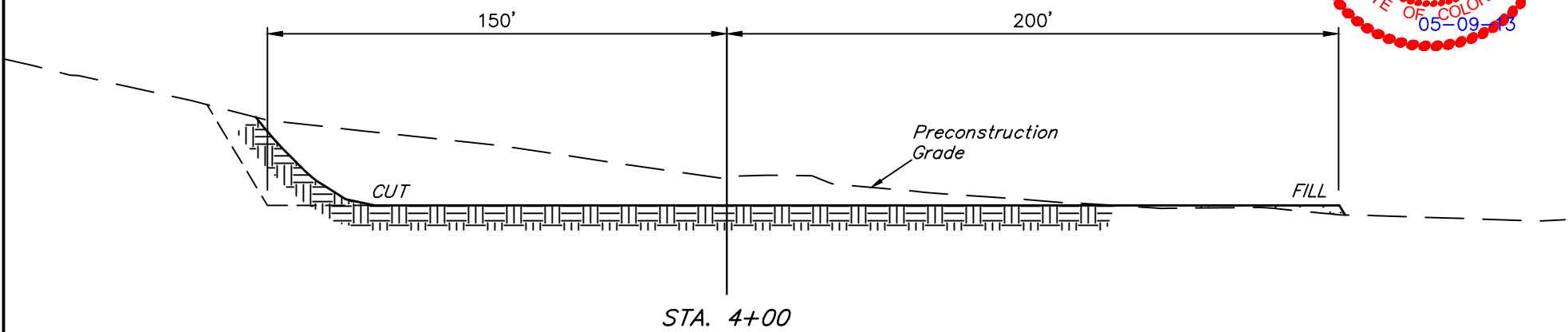
Elev. Ungraded Ground At Loc. Stake = 6352.5  
FINISHED GRADE ELEV. AT LOC. STAKE = 6351.7'

UINTAH ENGINEERING & LAND SURVEYING  
85 So. 200 East \* Vernal, Utah 84078 \* (435) 789-1017

1" = 20'  
X-Section  
Scale  
1" = 50'  
DATE: 05-07-13  
DRAWN BY: A.D.

AXIA ENERGY  
CONSTRUCTION LAYOUT CROSS SECTIONS FOR  
BULLDOG #22-41V-890  
SECTION 23, T8N, R90W, 6th P.M.  
107' FNL 320' FWL

FIGURE #2



NOTE:  
Topsoil should not be  
Stripped Below Finished  
Grade on Substructure Area.

\* NOTE:  
FILL QUANTITY INCLUDES  
5% FOR COMPACTION

APPROXIMATE YARDAGES

(12") Topsoil Stripping = 5,600 Cu. Yds.  
Remaining Location = 10,550 Cu. Yds.  
TOTAL CUT = 16,150 CU. YDS.  
FILL = 6,760 CU. YDS.

EXCESS MATERIAL = 9,390 Cu. Yds.  
Topsoil & Pit Backfill = 6,560 Cu. Yds.  
(1/2 Pit Vol.)  
EXCESS UNBALANCE = 2,830 Cu. Yds.  
(After Interim Rehabilitation)

APPROXIMATE ACREAGE

WELL SITE DISTURBANCE = ± 4.260 ACRES  
ACCESS ROAD DISTURBANCE = ± 0.599 ACRES  
TOTAL = ± 4.859 ACRES

UINTAH ENGINEERING & LAND SURVEYING  
85 So. 200 East \* Vernal, Utah 84078 \* (435) 789-1017