

1910 Brass Cap,
1.1' High,
Pile of Stones
Lat: 40.644628°
Long: 107.468453°

T8N, R90W, 6th P.M.

S89°22'08"E

2630.55' (Meas.)

S89°11'E - 2788.50' (G.L.O.)

320'

Target

Bottom

Hole

BULLDOG #22-41V-890

Elev. Ungraded Ground = 6352'

LOT 1

H.E. 221

LOT 2

D.S. 54

LOT 3

23

1910 Brass Cap, 1.0'
High, N-E Fence
Lat: 40.637228°
Long: 107.467858°

LOT 4

NOTE:
THE PROPOSED TARGET BOTTOM HOLE FOR
THIS WELL IS LOCATED IN THE LOT 1 OF
SECTION 22, T8N, R90W, 6th P.M. AT 107'
FNL 700' FEL. IT BEARS S89°15'59"W
1020.80' FROM THE PROPOSED WELL HEAD.

H.E. 508

LOT 5

LOT 6

LOT 7

S89°14'E - 5347.32' (G.L.O.)

LEGEND:

— = 90° SYMBOL

● = PROPOSED WELL HEAD.

▲ = SECTION CORNERS LOCATED.

LINE TABLE

| LINE | DIRECTION | LENGTH |
|------|-------------|----------|
| L1 | S89°15'59"W | 1020.80' |

| | |
|--|--|
| NAD 83 (SURFACE LOCATION) | |
| LATITUDE = 40°38'39.56" (40.644322) | |
| LONGITUDE = 107°28'02.19" (107.467275) | |
| NAD 27 (SURFACE LOCATION) | |
| LATITUDE = 40°38'39.67" (40.644353) | |
| LONGITUDE = 107°27'59.96" (107.466656) | |
| STATE PLANE NAD 83 | |
| N: 1483624.56 E: 2454113.23 | |
| STATE PLANE NAD 27 | |
| N: 483623.21 E: 1454270.68 | |

PDOP = 1.3

SCALE 1" = 1000'

DATE SURVEYED: 05-02-13

DATE DRAWN: 05-03-13

REFERENCES

G.L.O. PLAT

WEATHER

AXIA ENERGY

AXIA ENERGY

Well location, BULLDOG #22-41V-890 (SURFACE LOCATION), located as shown in Lot 1 of Section 23, T8N, R90W, 6th P.M., Moffat County, Colorado.

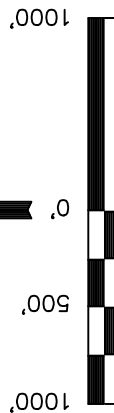
BASIS OF ELEVATION

SPOT ELEVATION LOCATED AT THE SOUTHWEST CORNER OF SECTION 15, T7N, R91W, 6th P.M. TAKEN FROM THE CRAIG QUADRANGLE, COLORADO, MOFFAT COUNTY, 7.5 MINUTE QUAD (TOPOGRAPHIC MAP) PUBLISHED BY THE UNITED STATES DEPARTMENT OF THE INTERIOR, GEOLOGICAL SURVEY. SAID ELEVATION IS MARKED AS BEING 6672 FEET.

BASIS OF BEARINGS

BASIS OF BEARINGS IS A G.P.S. OBSERVATION.

N02°42'W - 5377.02' (G.L.O.)



SCALE

CERTIFICATE

THIS IS TO CERTIFY THAT THE ABOVE PLAT WAS PREPARED FROM FIELD NOTES OF ACTUAL SURVEYS MADE BY ME OR UNDER MY SUPERVISION AND THAT THE SAME ARE TRUE AND CORRECT TO THE BEST OF MY KNOWLEDGE AND BELIEF.

REGISTERED LAND SURVEYOR
REGISTRATION NO. 17492
STATE OF COLORADO
05-09-13

UINTAH ENGINEERING & LAND SURVEYING

85 SOUTH 200 EAST - VERNAL, UTAH 84078

(435) 789-1017

T8N, R90W, 6th P.M.

AXIA ENERGY

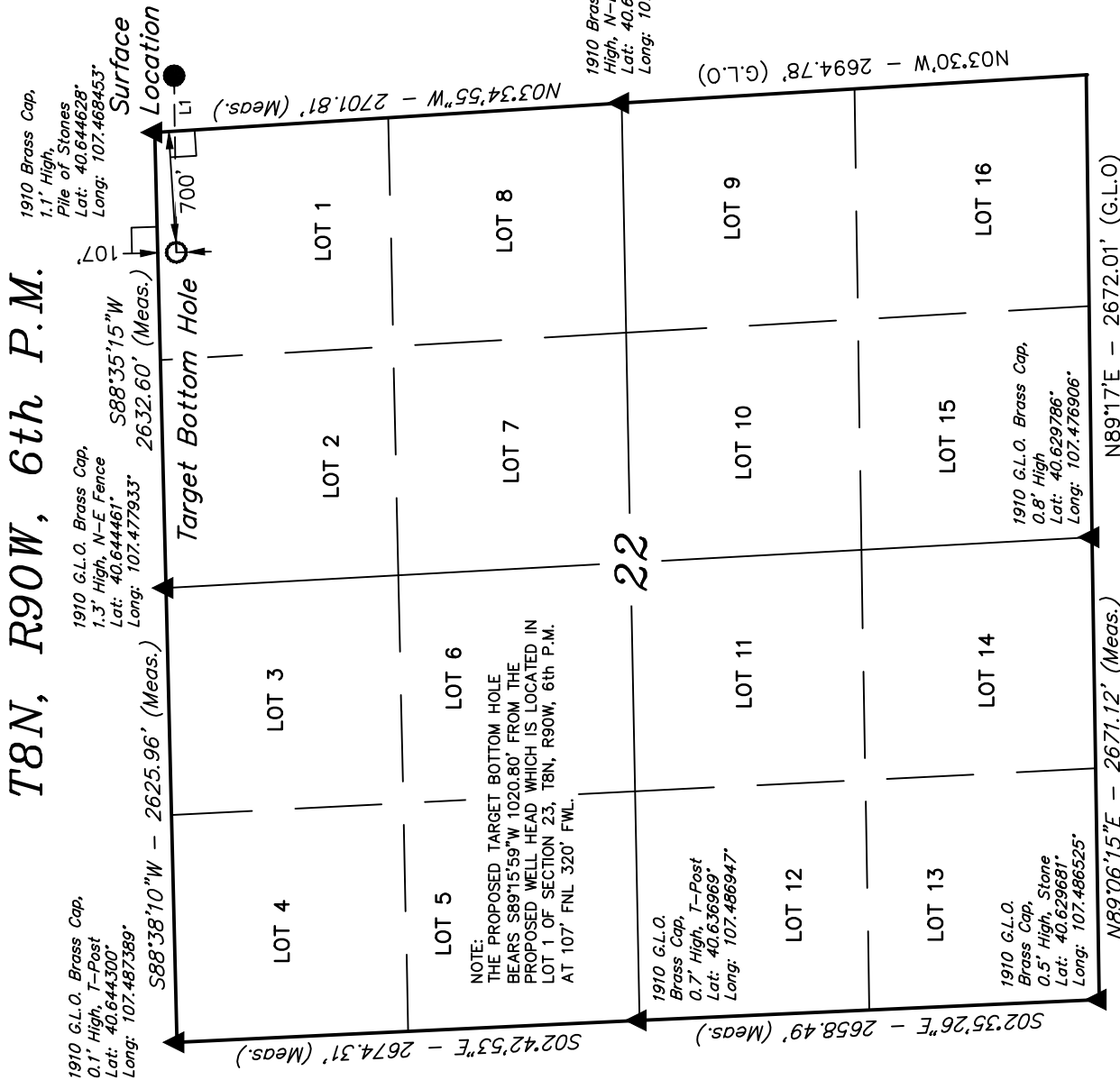
Well location, BULLDOG #22-41V-890 (TARGET BOTTOM HOLE), located as shown in Lot 1 of Section 22, T8N, R90W, 6th P.M., Moffat County, Colorado.

BASIS OF ELEVATION

SPOT ELEVATION LOCATED AT THE SOUTHWEST CORNER OF SECTION 15, T7N, R91W, 6th P.M. TAKEN FROM THE CRAIG QUADRANGLE, COLORADO, MOFFAT COUNTY, 7.5 MINUTE QUAD (TOPOGRAPHIC MAP) PUBLISHED BY THE UNITED STATES DEPARTMENT OF THE INTERIOR, GEOLOGICAL SURVEY. SAID ELEVATION IS MARKED AS BEING 6672 FEET.

BASIS OF BEARINGS

BASIS OF BEARINGS IS A G.P.S. OBSERVATION.

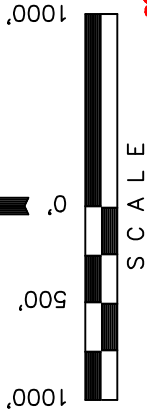


LEGEND:

- = 90° SYMBOL
- = PROPOSED WELL HEAD.
- ▲ = SECTION CORNERS LOCATED.

| LINE TABLE | | |
|------------|--------------|----------|
| LINE | DIRECTION | LENGTH |
| L1 | S89°15'59\"W | 1020.80' |

| | |
|-----------------------------|---------------|
| NAD 83 (TARGET BOTTOM HOLE) | |
| LATITUDE = 40°38'39.45\" | (40.644292) |
| LONGITUDE = 107°28'15.42\" | (107.470950) |
| NAD 27 (TARGET BOTTOM HOLE) | |
| LATITUDE = 40°38'39.55\" | (40.644319) |
| LONGITUDE = 107°28'13.19\" | (107.470331) |
| STATE PLANE NAD 83 | |
| N: 1483635.68 | E: 2453092.84 |
| STATE PLANE NAD 27 | |
| N: 483634.34 | E: 1453250.29 |



CERTIFICATE

THIS IS TO CERTIFY THAT THE ABOVE PLAT WAS PREPARED FROM FIELD NOTES OF ACTUAL SURVEYS MADE BY ME OR UNDER MY SUPERVISION AND THAT THE SAME ARE TRUE AND CORRECT TO THE BEST OF MY KNOWLEDGE AND BELIEF.

REGISTERED LAND SURVEYOR
REGISTRATION NO. 17492
STATE OF COLORADO
08-09-13

UNTAH ENGINEERING & LAND SURVEYING
85 SOUTH 200 EAST - VERNAL, UTAH 84078
(435) 789-1017

| | | |
|-------------------------|----------------------------|-------------------------|
| SCALE 1" = 1000' | DATE SURVEYED: 05-02-13 | DATE DRAWN: 05-03-13 |
| PARTY B.H. A.H. A.D. | REFERENCES G.L.O. PLAT | |
| WEATHER WARM | FILE | AXIA ENERGY |