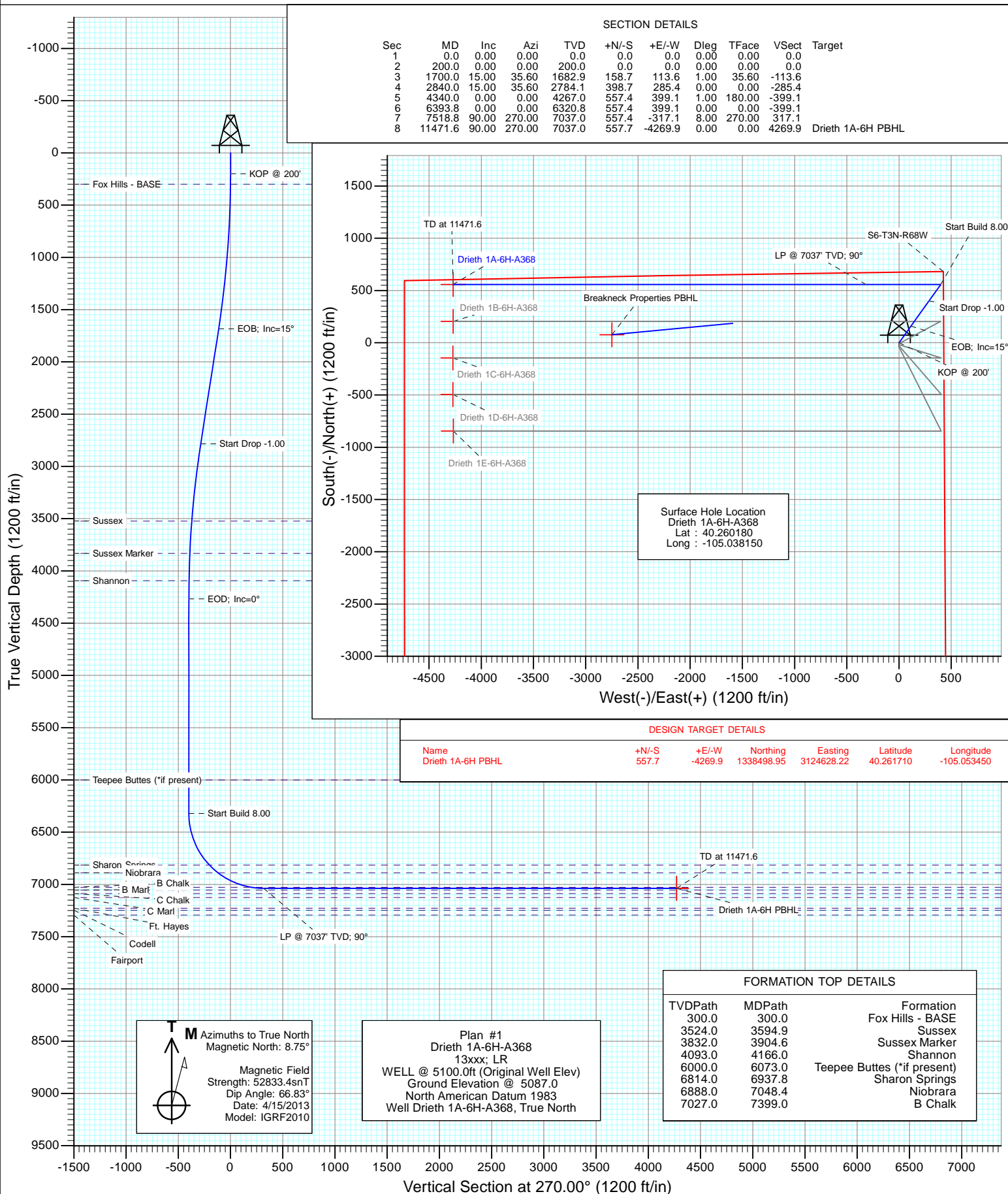




Project: DJ Wattenberg  
Site: S6-T3N-R68W (Zisch/Drieth 1)  
Well: Drieth 1A-6H-A368  
Wellbore: Hz  
Design: Plan #1



## Planning Report

<b>Database:</b>	USA EDM 5000 Multi Users DB	<b>Local Co-ordinate Reference:</b>	Well Drieth 1A-6H-A368
<b>Company:</b>	EnCana Oil & Gas (USA) Inc	<b>TVD Reference:</b>	WELL @ 5100.0ft (Original Well Elev)
<b>Project:</b>	DJ Wattenberg	<b>MD Reference:</b>	WELL @ 5100.0ft (Original Well Elev)
<b>Site:</b>	S6-T3N-R68W (Zisch/Drieth 1)	<b>North Reference:</b>	True
<b>Well:</b>	Drieth 1A-6H-A368	<b>Survey Calculation Method:</b>	Minimum Curvature
<b>Wellbore:</b>	Hz		
<b>Design:</b>	Plan #1		

<b>Project</b>	DJ Wattenberg		
<b>Map System:</b>	US State Plane 1983	<b>System Datum:</b>	Mean Sea Level
<b>Geo Datum:</b>	North American Datum 1983		
<b>Map Zone:</b>	Colorado Northern Zone		

Site		S6-T3N-R68W (Zisch/Drieth 1)			
Site Position:		Northing:	1,333,692.15 ft	Latitude:	40.248510
From:	Lat/Long	Easting:	3,124,995.76 ft	Longitude:	-105.052220
Position Uncertainty:	0.0 ft	Slot Radius:	13.200 in	Grid Convergence:	0.29 °

Well	Drieth 1A-6H-A368					
Well Position	+N/-S	0.0 ft	Northing:	1,337,963.46 ft	Latitude:	40.260180
	+E/-W	0.0 ft	Easting:	3,128,900.97 ft	Longitude:	-105.038150
Position Uncertainty		0.0 ft	Wellhead Elevation:	ft	Ground Level:	5,087.0 ft

<b>Wellbore</b>	Hz				
<b>Magnetics</b>	<b>Model Name</b>	<b>Sample Date</b>	<b>Declination (°)</b>	<b>Dip Angle (°)</b>	<b>Field Strength (nT)</b>
	IGRF2010	4/15/2013	8.75	66.83	52,833

<b>Design</b>	Plan #1			
<b>Audit Notes:</b>				
<b>Version:</b>	<b>Phase:</b>	PLAN	<b>Tie On Depth:</b>	0.0
<b>Vertical Section:</b>	<b>Depth From (TVD) (ft)</b>	<b>+N/-S (ft)</b>	<b>+E/-W (ft)</b>	<b>Direction (°)</b>
	0.0	0.0	0.0	270.00

<b>Plan Sections</b>										
Measured Depth (ft)	Inclination (°)	Azimuth (°)	Vertical Depth (ft)	+N/-S (ft)	+E/-W (ft)	Dogleg Rate (°/100ft)	Build Rate (°/100ft)	Turn Rate (°/100ft)	TFO (°)	Target
0.0	0.00	0.00	0.0	0.0	0.0	0.00	0.00	0.00	0.00	
200.0	0.00	0.00	200.0	0.0	0.0	0.00	0.00	0.00	0.00	
1,700.0	15.00	35.60	1,682.9	158.7	113.6	1.00	1.00	0.00	35.60	
2,840.0	15.00	35.60	2,784.1	398.7	285.4	0.00	0.00	0.00	0.00	
4,340.0	0.00	0.00	4,267.0	557.4	399.1	1.00	-1.00	0.00	180.00	
6,393.8	0.00	0.00	6,320.8	557.4	399.1	0.00	0.00	0.00	0.00	
7,518.8	90.00	270.00	7,037.0	557.4	-317.1	8.00	8.00	0.00	270.00	
11,471.6	90.00	270.00	7,037.0	557.7	-4,269.9	0.00	0.00	0.00	0.00	Drieth 1A-6H PBHL

# Planning Report

<b>Database:</b>	USA EDM 5000 Multi Users DB	<b>Local Co-ordinate Reference:</b>	Well Drieth 1A-6H-A368
<b>Company:</b>	EnCana Oil & Gas (USA) Inc	<b>TVD Reference:</b>	WELL @ 5100.0ft (Original Well Elev)
<b>Project:</b>	DJ Wattenberg	<b>MD Reference:</b>	WELL @ 5100.0ft (Original Well Elev)
<b>Site:</b>	S6-T3N-R68W (Zisch/Drieth 1)	<b>North Reference:</b>	True
<b>Well:</b>	Drieth 1A-6H-A368	<b>Survey Calculation Method:</b>	Minimum Curvature
<b>Wellbore:</b>	Hz		
<b>Design:</b>	Plan #1		

Planned Survey									
Measured Depth (ft)	Inclination (°)	Azimuth (°)	Vertical Depth (ft)	+N/-S (ft)	+E/-W (ft)	Vertical Section (ft)	Dogleg Rate (°/100ft)	Build Rate (°/100ft)	Comments / Formations
0.0	0.00	0.00	0.0	0.0	0.0	0.0	0.00	0.00	
100.0	0.00	0.00	100.0	0.0	0.0	0.0	0.00	0.00	
200.0	0.00	0.00	200.0	0.0	0.0	0.0	0.00	0.00	KOP @ 200'
300.0	1.00	35.60	300.0	0.7	0.5	-0.5	1.00	1.00	Fox Hills - BASE
400.0	2.00	35.60	400.0	2.8	2.0	-2.0	1.00	1.00	
500.0	3.00	35.60	499.9	6.4	4.6	-4.6	1.00	1.00	
600.0	4.00	35.60	599.7	11.3	8.1	-8.1	1.00	1.00	
700.0	5.00	35.60	699.4	17.7	12.7	-12.7	1.00	1.00	
800.0	6.00	35.60	798.9	25.5	18.3	-18.3	1.00	1.00	
900.0	7.00	35.60	898.3	34.7	24.9	-24.9	1.00	1.00	
1,000.0	8.00	35.60	997.4	45.3	32.5	-32.5	1.00	1.00	
1,100.0	9.00	35.60	1,096.3	57.4	41.1	-41.1	1.00	1.00	
1,200.0	10.00	35.60	1,194.9	70.8	50.7	-50.7	1.00	1.00	
1,300.0	11.00	35.60	1,293.3	85.6	61.3	-61.3	1.00	1.00	
1,400.0	12.00	35.60	1,391.2	101.8	72.9	-72.9	1.00	1.00	
1,500.0	13.00	35.60	1,488.9	119.4	85.5	-85.5	1.00	1.00	
1,600.0	14.00	35.60	1,586.1	138.4	99.1	-99.1	1.00	1.00	
1,700.0	15.00	35.60	1,682.9	158.7	113.6	-113.6	1.00	1.00	EOB; Inc=15°
1,800.0	15.00	35.60	1,779.5	179.8	128.7	-128.7	0.00	0.00	
1,900.0	15.00	35.60	1,876.1	200.8	143.8	-143.8	0.00	0.00	
2,000.0	15.00	35.60	1,972.7	221.9	158.8	-158.8	0.00	0.00	
2,100.0	15.00	35.60	2,069.3	242.9	173.9	-173.9	0.00	0.00	
2,200.0	15.00	35.60	2,165.9	264.0	189.0	-189.0	0.00	0.00	
2,300.0	15.00	35.60	2,262.5	285.0	204.0	-204.0	0.00	0.00	
2,400.0	15.00	35.60	2,359.1	306.1	219.1	-219.1	0.00	0.00	
2,500.0	15.00	35.60	2,455.7	327.1	234.2	-234.2	0.00	0.00	
2,600.0	15.00	35.60	2,552.3	348.1	249.2	-249.2	0.00	0.00	
2,700.0	15.00	35.60	2,648.8	369.2	264.3	-264.3	0.00	0.00	
2,800.0	15.00	35.60	2,745.4	390.2	279.4	-279.4	0.00	0.00	
2,840.0	15.00	35.60	2,784.1	398.7	285.4	-285.4	0.00	0.00	Start Drop -1.00
2,900.0	14.40	35.60	2,842.1	411.0	294.3	-294.3	1.00	-1.00	
3,000.0	13.40	35.60	2,939.2	430.6	308.3	-308.3	1.00	-1.00	
3,100.0	12.40	35.60	3,036.7	448.7	321.2	-321.2	1.00	-1.00	
3,200.0	11.40	35.60	3,134.5	465.5	333.3	-333.3	1.00	-1.00	
3,300.0	10.40	35.60	3,232.7	480.9	344.3	-344.3	1.00	-1.00	
3,400.0	9.40	35.60	3,331.2	494.8	354.3	-354.3	1.00	-1.00	
3,500.0	8.40	35.60	3,430.0	507.4	363.3	-363.3	1.00	-1.00	
3,594.9	7.45	35.60	3,524.0	518.1	370.9	-370.9	1.00	-1.00	Sussex
3,600.0	7.40	35.60	3,529.1	518.6	371.3	-371.3	1.00	-1.00	
3,700.0	6.40	35.60	3,628.3	528.4	378.3	-378.3	1.00	-1.00	
3,800.0	5.40	35.60	3,727.8	536.7	384.3	-384.3	1.00	-1.00	
3,900.0	4.40	35.60	3,827.4	543.7	389.2	-389.2	1.00	-1.00	
3,904.6	4.35	35.60	3,832.0	543.9	389.4	-389.4	1.00	-1.00	Sussex Marker
4,000.0	3.40	35.60	3,927.2	549.2	393.2	-393.2	1.00	-1.00	
4,100.0	2.40	35.60	4,027.1	553.3	396.1	-396.1	1.00	-1.00	
4,166.0	1.74	35.60	4,093.0	555.2	397.5	-397.5	1.00	-1.00	Shannon
4,200.0	1.40	35.60	4,127.0	556.0	398.1	-398.1	1.00	-1.00	
4,300.0	0.40	35.60	4,227.0	557.3	399.0	-399.0	1.00	-1.00	
4,340.0	0.00	0.00	4,267.0	557.4	399.1	-399.1	1.00	-1.00	EOB; Inc=0°
4,400.0	0.00	0.00	4,327.0	557.4	399.1	-399.1	0.00	0.00	
4,500.0	0.00	0.00	4,427.0	557.4	399.1	-399.1	0.00	0.00	
4,600.0	0.00	0.00	4,527.0	557.4	399.1	-399.1	0.00	0.00	

# Planning Report

<b>Database:</b>	USA EDM 5000 Multi Users DB	<b>Local Co-ordinate Reference:</b>	Well Drieth 1A-6H-A368
<b>Company:</b>	EnCana Oil & Gas (USA) Inc	<b>TVD Reference:</b>	WELL @ 5100.0ft (Original Well Elev)
<b>Project:</b>	DJ Wattenberg	<b>MD Reference:</b>	WELL @ 5100.0ft (Original Well Elev)
<b>Site:</b>	S6-T3N-R68W (Zisch/Drieth 1)	<b>North Reference:</b>	True
<b>Well:</b>	Drieth 1A-6H-A368	<b>Survey Calculation Method:</b>	Minimum Curvature
<b>Wellbore:</b>	Hz		
<b>Design:</b>	Plan #1		

## Planned Survey

Measured Depth (ft)	Inclination (°)	Azimuth (°)	Vertical Depth (ft)	+N/-S (ft)	+E/-W (ft)	Vertical Section (ft)	Dogleg Rate (°/100ft)	Build Rate (°/100ft)	Comments / Formations
4,700.0	0.00	0.00	4,627.0	557.4	399.1	-399.1	0.00	0.00	
4,800.0	0.00	0.00	4,727.0	557.4	399.1	-399.1	0.00	0.00	
4,900.0	0.00	0.00	4,827.0	557.4	399.1	-399.1	0.00	0.00	
5,000.0	0.00	0.00	4,927.0	557.4	399.1	-399.1	0.00	0.00	
5,100.0	0.00	0.00	5,027.0	557.4	399.1	-399.1	0.00	0.00	
5,200.0	0.00	0.00	5,127.0	557.4	399.1	-399.1	0.00	0.00	
5,300.0	0.00	0.00	5,227.0	557.4	399.1	-399.1	0.00	0.00	
5,400.0	0.00	0.00	5,327.0	557.4	399.1	-399.1	0.00	0.00	
5,500.0	0.00	0.00	5,427.0	557.4	399.1	-399.1	0.00	0.00	
5,600.0	0.00	0.00	5,527.0	557.4	399.1	-399.1	0.00	0.00	
5,700.0	0.00	0.00	5,627.0	557.4	399.1	-399.1	0.00	0.00	
5,800.0	0.00	0.00	5,727.0	557.4	399.1	-399.1	0.00	0.00	
5,900.0	0.00	0.00	5,827.0	557.4	399.1	-399.1	0.00	0.00	
6,000.0	0.00	0.00	5,927.0	557.4	399.1	-399.1	0.00	0.00	
6,073.0	0.00	0.00	6,000.0	557.4	399.1	-399.1	0.00	0.00	Teepee Buttes (*if present)
6,100.0	0.00	0.00	6,027.0	557.4	399.1	-399.1	0.00	0.00	
6,200.0	0.00	0.00	6,127.0	557.4	399.1	-399.1	0.00	0.00	
6,300.0	0.00	0.00	6,227.0	557.4	399.1	-399.1	0.00	0.00	
6,393.8	0.00	0.00	6,320.8	557.4	399.1	-399.1	0.00	0.00	Start Build 8.00
6,400.0	0.50	270.00	6,327.0	557.4	399.0	-399.0	8.00	8.00	
6,500.0	8.50	270.00	6,426.6	557.4	391.2	-391.2	8.00	8.00	
6,600.0	16.50	270.00	6,524.2	557.4	369.6	-369.6	8.00	8.00	
6,700.0	24.50	270.00	6,617.8	557.4	334.6	-334.6	8.00	8.00	
6,800.0	32.50	270.00	6,705.6	557.4	286.9	-286.9	8.00	8.00	
6,900.0	40.50	270.00	6,785.9	557.4	227.5	-227.5	8.00	8.00	
6,937.8	43.52	270.00	6,814.0	557.4	202.2	-202.2	8.00	8.00	Sharon Springs
7,000.0	48.50	270.00	6,857.2	557.4	157.5	-157.5	8.00	8.00	
7,048.4	52.37	270.00	6,888.0	557.4	120.2	-120.2	8.00	8.00	Niobrara
7,100.0	56.50	270.00	6,918.0	557.4	78.2	-78.2	8.00	8.00	
7,200.0	64.50	270.00	6,967.2	557.4	-8.8	8.8	8.00	8.00	
7,300.0	72.50	270.00	7,003.8	557.4	-101.7	101.7	8.00	8.00	
7,399.0	80.41	270.00	7,027.0	557.4	-197.9	197.9	8.00	8.00	B Chalk
7,400.0	80.50	270.00	7,027.2	557.4	-198.9	198.9	8.00	8.00	
7,500.0	88.50	270.00	7,036.8	557.4	-298.3	298.3	8.00	8.00	
7,518.8	90.00	270.00	7,037.0	557.4	-317.1	317.1	8.00	8.00	LP @ 7037' TVD; 90°
7,600.0	90.00	270.00	7,037.0	557.5	-398.3	398.3	0.00	0.00	
7,700.0	90.00	270.00	7,037.0	557.5	-498.3	498.3	0.00	0.00	
7,800.0	90.00	270.00	7,037.0	557.5	-598.3	598.3	0.00	0.00	
7,900.0	90.00	270.00	7,037.0	557.5	-698.3	698.3	0.00	0.00	
8,000.0	90.00	270.00	7,037.0	557.5	-798.3	798.3	0.00	0.00	
8,100.0	90.00	270.00	7,037.0	557.5	-898.3	898.3	0.00	0.00	
8,200.0	90.00	270.00	7,037.0	557.5	-998.3	998.3	0.00	0.00	
8,300.0	90.00	270.00	7,037.0	557.5	-1,098.3	1,098.3	0.00	0.00	
8,400.0	90.00	270.00	7,037.0	557.5	-1,198.3	1,198.3	0.00	0.00	
8,500.0	90.00	270.00	7,037.0	557.5	-1,298.3	1,298.3	0.00	0.00	
8,600.0	90.00	270.00	7,037.0	557.5	-1,398.3	1,398.3	0.00	0.00	
8,700.0	90.00	270.00	7,037.0	557.5	-1,498.3	1,498.3	0.00	0.00	
8,800.0	90.00	270.00	7,037.0	557.5	-1,598.3	1,598.3	0.00	0.00	
8,900.0	90.00	270.00	7,037.0	557.5	-1,698.3	1,698.3	0.00	0.00	
9,000.0	90.00	270.00	7,037.0	557.6	-1,798.3	1,798.3	0.00	0.00	
9,100.0	90.00	270.00	7,037.0	557.6	-1,898.3	1,898.3	0.00	0.00	
9,200.0	90.00	270.00	7,037.0	557.6	-1,998.3	1,998.3	0.00	0.00	

## Planning Report

<b>Database:</b>	USA EDM 5000 Multi Users DB	<b>Local Co-ordinate Reference:</b>	Well Drieth 1A-6H-A368
<b>Company:</b>	EnCana Oil & Gas (USA) Inc	<b>TVD Reference:</b>	WELL @ 5100.0ft (Original Well Elev)
<b>Project:</b>	DJ Wattenberg	<b>MD Reference:</b>	WELL @ 5100.0ft (Original Well Elev)
<b>Site:</b>	S6-T3N-R68W (Zisch/Drieth 1)	<b>North Reference:</b>	True
<b>Well:</b>	Drieth 1A-6H-A368	<b>Survey Calculation Method:</b>	Minimum Curvature
<b>Wellbore:</b>	Hz		
<b>Design:</b>	Plan #1		

### Planned Survey

Measured Depth (ft)	Inclination (°)	Azimuth (°)	Vertical Depth (ft)	+N/-S (ft)	+E/-W (ft)	Vertical Section (ft)	Dogleg Rate (°/100ft)	Build Rate (°/100ft)	Comments / Formations
9,300.0	90.00	270.00	7,037.0	557.6	-2,098.3	2,098.3	0.00	0.00	
9,400.0	90.00	270.00	7,037.0	557.6	-2,198.3	2,198.3	0.00	0.00	
9,500.0	90.00	270.00	7,037.0	557.6	-2,298.3	2,298.3	0.00	0.00	
9,600.0	90.00	270.00	7,037.0	557.6	-2,398.3	2,398.3	0.00	0.00	
9,700.0	90.00	270.00	7,037.0	557.6	-2,498.3	2,498.3	0.00	0.00	
9,800.0	90.00	270.00	7,037.0	557.6	-2,598.3	2,598.3	0.00	0.00	
9,900.0	90.00	270.00	7,037.0	557.6	-2,698.3	2,698.3	0.00	0.00	
10,000.0	90.00	270.00	7,037.0	557.6	-2,798.3	2,798.3	0.00	0.00	
10,100.0	90.00	270.00	7,037.0	557.6	-2,898.3	2,898.3	0.00	0.00	
10,200.0	90.00	270.00	7,037.0	557.6	-2,998.3	2,998.3	0.00	0.00	
10,300.0	90.00	270.00	7,037.0	557.7	-3,098.3	3,098.3	0.00	0.00	
10,400.0	90.00	270.00	7,037.0	557.7	-3,198.3	3,198.3	0.00	0.00	
10,500.0	90.00	270.00	7,037.0	557.7	-3,298.3	3,298.3	0.00	0.00	
10,600.0	90.00	270.00	7,037.0	557.7	-3,398.3	3,398.3	0.00	0.00	
10,700.0	90.00	270.00	7,037.0	557.7	-3,498.3	3,498.3	0.00	0.00	
10,800.0	90.00	270.00	7,037.0	557.7	-3,598.3	3,598.3	0.00	0.00	
10,900.0	90.00	270.00	7,037.0	557.7	-3,698.3	3,698.3	0.00	0.00	
11,000.0	90.00	270.00	7,037.0	557.7	-3,798.3	3,798.3	0.00	0.00	
11,100.0	90.00	270.00	7,037.0	557.7	-3,898.3	3,898.3	0.00	0.00	
11,200.0	90.00	270.00	7,037.0	557.7	-3,998.3	3,998.3	0.00	0.00	
11,300.0	90.00	270.00	7,037.0	557.7	-4,098.3	4,098.3	0.00	0.00	
11,400.0	90.00	270.00	7,037.0	557.7	-4,198.3	4,198.3	0.00	0.00	
11,471.6	90.00	270.00	7,037.0	557.7	-4,269.9	4,269.9	0.00	0.00	TD at 11471.6 - Drieth 1A-6H PBHL

### Targets

#### Target Name

- hit/miss target	Dip Angle (°)	Dip Dir. (°)	TVD (ft)	+N/-S (ft)	+E/-W (ft)	Northing (ft)	Easting (ft)	Latitude	Longitude
- Shape									
Drieth 1A-6H PBHL	0.00	0.00	7,037.0	557.7	-4,269.9	1,338,498.95	3,124,628.22	40.261710	-105.053450
- plan hits target center									
- Point									

### Formations

Measured Depth (ft)	Vertical Depth (ft)	Name	Lithology	Dip (°)	Dip Direction (°)
300.0	300.0	Fox Hills - BASE			
3,594.9	3,524.0	Sussex			
3,904.6	3,832.0	Sussex Marker			
4,166.0	4,093.0	Shannon			
6,073.0	6,000.0	Teepee Buttes (*if present)			
6,937.8	6,814.0	Sharon Springs			
7,048.4	6,888.0	Niobrara			
7,399.0	7,027.0	B Chalk			

## Planning Report

<b>Database:</b>	USA EDM 5000 Multi Users DB	<b>Local Co-ordinate Reference:</b>	Well Drieth 1A-6H-A368
<b>Company:</b>	EnCana Oil & Gas (USA) Inc	<b>TVD Reference:</b>	WELL @ 5100.0ft (Original Well Elev)
<b>Project:</b>	DJ Wattenberg	<b>MD Reference:</b>	WELL @ 5100.0ft (Original Well Elev)
<b>Site:</b>	S6-T3N-R68W (Zisch/Drieth 1)	<b>North Reference:</b>	True
<b>Well:</b>	Drieth 1A-6H-A368	<b>Survey Calculation Method:</b>	Minimum Curvature
<b>Wellbore:</b>	Hz		
<b>Design:</b>	Plan #1		

### Plan Annotations

Measured Depth (ft)	Vertical Depth (ft)	Local Coordinates		Comment
		+N/-S (ft)	+E/-W (ft)	
200.0	200.0	0.0	0.0	KOP @ 200'
1,700.0	1,682.9	158.7	113.6	EOB; Inc=15°
2,840.0	2,784.1	398.7	285.4	Start Drop -1.00
4,340.0	4,267.0	557.4	399.1	EOD; Inc=0°
6,393.8	6,320.8	557.4	399.1	Start Build 8.00
7,518.8	7,037.0	557.4	-317.1	LP @ 7037' TVD; 90°
11,471.6	7,037.0	557.7	-4,269.9	TD at 11471.6

# **EnCana Oil & Gas (USA) Inc**

**DJ Wattenberg**

**S6-T3N-R68W (Zisch/Drieth 1)**

**Drieth 1A-6H-A368**

**Hz**

**Plan #1**

## **Anticollision Report**

**15 April, 2013**

## Anticollision Report

<b>Company:</b>	EnCana Oil & Gas (USA) Inc	<b>Local Co-ordinate Reference:</b>	Well Drieth 1A-6H-A368
<b>Project:</b>	DJ Wattenberg	<b>TVD Reference:</b>	WELL @ 5100.0ft (Original Well Elev)
<b>Reference Site:</b>	S6-T3N-R68W (Zisch/Drieth 1)	<b>MD Reference:</b>	WELL @ 5100.0ft (Original Well Elev)
<b>Site Error:</b>	0.0ft	<b>North Reference:</b>	True
<b>Reference Well:</b>	Drieth 1A-6H-A368	<b>Survey Calculation Method:</b>	Minimum Curvature
<b>Well Error:</b>	0.0ft	<b>Output errors are at</b>	2.00 sigma
<b>Reference Wellbore</b>	Hz	<b>Database:</b>	USA EDM 5000 Multi Users DB
<b>Reference Design:</b>	Plan #1	<b>Offset TVD Reference:</b>	Offset Datum

<b>Reference</b>	Plan #1		
<b>Filter type:</b>	NO GLOBAL FILTER: Using user defined selection & filtering criteria		
<b>Interpolation Method:</b>	MD Interval 100.0ft	<b>Error Model:</b>	Systematic Ellipse
<b>Depth Range:</b>	Unlimited	<b>Scan Method:</b>	Closest Approach 3D
<b>Results Limited by:</b>	Maximum center-center distance of 500.0ft	<b>Error Surface:</b>	Elliptical Conic
<b>Warning Levels Evaluated at:</b>	2.00 Sigma		

<b>Survey Tool Program</b>	<b>Date</b>	4/15/2013		
<b>From (ft)</b>	<b>To (ft)</b>	<b>Survey (Wellbore)</b>	<b>Tool Name</b>	<b>Description</b>
0.0	11,471.6	Plan #1 (Hz)	MWD	Geolink MWD

<b>Summary</b>						
<b>Site Name</b>	<b>Reference Measured Depth (ft)</b>	<b>Offset Measured Depth (ft)</b>	<b>Distance Between Centres (ft)</b>	<b>Distance Between Ellipses (ft)</b>	<b>Separation Factor</b>	<b>Warning</b>
<b>Offset Well - Wellbore - Design</b>						
S6-T3N-R68W (Zisch/Drieth 1)						
Breakneck Properties 21-6 - DD - Plan #1	9,950.8	7,178.0	480.9	383.7	4.946	CC, ES
Breakneck Properties 21-6 - DD - Plan #1	10,000.0	7,178.0	483.5	385.0	4.911	SF
Drieth 1B-6H-A368 - Hz - Plan #1	200.0	200.0	7.3	6.6	11.162	CC, ES
Drieth 1B-6H-A368 - Hz - Plan #1	11,472.5	11,655.4	416.2	228.1	2.212	SF
Drieth 1C-6H-A368 - Hz - Plan #1	200.0	199.0	18.2	17.6	27.979	CC, ES
Drieth 1C-6H-A368 - Hz - Plan #1	500.0	498.8	25.1	23.4	14.774	SF
Drieth 1D-6H-A368 - Hz - Plan #1	200.0	199.0	29.1	28.5	44.766	CC, ES
Drieth 1D-6H-A368 - Hz - Plan #1	500.0	498.0	38.2	36.5	22.421	SF
Drieth 1E-6H-A368 - Hz - Plan #1	200.0	199.0	40.1	39.4	61.553	CC, ES
Drieth 1E-6H-A368 - Hz - Plan #1	600.0	595.1	63.7	61.7	30.916	SF
SUMMER 6-1 (EXISTING) - EXISTING - NO SURVEYS						Out of range



## Anticollision Report

<b>Company:</b>	EnCana Oil & Gas (USA) Inc	<b>Local Co-ordinate Reference:</b>	Well Drieth 1A-6H-A368
<b>Project:</b>	DJ Wattenberg	<b>TVD Reference:</b>	WELL @ 5100.0ft (Original Well Elev)
<b>Reference Site:</b>	S6-T3N-R68W (Zisch/Drieth 1)	<b>MD Reference:</b>	WELL @ 5100.0ft (Original Well Elev)
<b>Site Error:</b>	0.0ft	<b>North Reference:</b>	True
<b>Reference Well:</b>	Drieth 1A-6H-A368	<b>Survey Calculation Method:</b>	Minimum Curvature
<b>Well Error:</b>	0.0ft	<b>Output errors are at</b>	2.00 sigma
<b>Reference Wellbore</b>	Hz	<b>Database:</b>	USA EDM 5000 Multi Users DB
<b>Reference Design:</b>	Plan #1	<b>Offset TVD Reference:</b>	Offset Datum

<b>Offset Design</b> S6-T3N-R68W (Zisch/Drieth 1) - Breakneck Properties 21-6 - DD - Plan #1													<b>Offset Site Error:</b> 0.0 ft
Survey Program: 0-MWD													<b>Offset Well Error:</b> 0.0 ft
Reference		Offset		Semi Major Axis			Distance						Warning
Measured Depth (ft)	Vertical Depth (ft)	Measured Depth (ft)	Vertical Depth (ft)	Reference (ft)	Offset (ft)	Highside Toolface (°)	Offset Wellbore Centre +N/-S (ft)	+E/-W (ft)	Between Centres (ft)	Between Ellipses (ft)	Total Uncertainty Axis	Separation Factor	
9,900.0	7,037.0	7,178.0	7,036.0	72.2	24.3	-90.00	76.7	-2,749.2	483.6	387.6	96.00	5.038	
9,950.8	7,037.0	7,178.0	7,036.0	73.4	24.3	-90.00	76.7	-2,749.2	480.9	383.7	97.24	4.946 CC, ES	
10,000.0	7,037.0	7,178.0	7,036.0	74.6	24.3	-90.00	76.7	-2,749.2	483.5	385.0	98.44	4.911 SF	

# Anticollision Report

<b>Company:</b>	EnCana Oil & Gas (USA) Inc	<b>Local Co-ordinate Reference:</b>	Well Drieth 1A-6H-A368
<b>Project:</b>	DJ Wattenberg	<b>TVD Reference:</b>	WELL @ 5100.0ft (Original Well Elev)
<b>Reference Site:</b>	S6-T3N-R68W (Zisch/Drieth 1)	<b>MD Reference:</b>	WELL @ 5100.0ft (Original Well Elev)
<b>Site Error:</b>	0.0ft	<b>North Reference:</b>	True
<b>Reference Well:</b>	Drieth 1A-6H-A368	<b>Survey Calculation Method:</b>	Minimum Curvature
<b>Well Error:</b>	0.0ft	<b>Output errors are at</b>	2.00 sigma
<b>Reference Wellbore</b>	Hz	<b>Database:</b>	USA EDM 5000 Multi Users DB
<b>Reference Design:</b>	Plan #1	<b>Offset TVD Reference:</b>	Offset Datum

Offset Design S6-T3N-R68W (Zisch/Drieth 1) - Drieth 1B-6H-A368 - Hz - Plan #1													Offset Site Error:	0.0 ft
Survey Program: 0-MWD													Offset Well Error:	0.0 ft
Reference		Offset		Semi Major Axis		Distance		Total		Separation		Warning		
Measured Depth (ft)	Vertical Depth (ft)	Measured Depth (ft)	Vertical Depth (ft)	Reference (ft)	Offset (ft)	Highside Toolface (°)	Offset Wellbore Centre +N/-S (ft)	+E/-W (ft)	Between Centres (ft)	Between Ellipses (ft)	Uncertainty Axis			
0.0	0.0	0.0	0.0	0.0	0.0	180.00	-7.3	0.0	7.3					
100.0	100.0	100.0	100.0	0.2	0.2	180.00	-7.3	0.0	7.3	7.0	0.30	23.991		
200.0	200.0	200.0	200.0	0.3	0.3	180.00	-7.3	0.0	7.3	6.6	0.65	11.162 CC, ES		
300.0	300.0	300.0	300.0	0.5	0.5	148.03	-7.3	0.0	8.0	7.0	1.00	7.995		
400.0	400.0	400.1	400.1	0.7	0.7	151.79	-6.9	0.8	9.8	8.4	1.35	7.242		
500.0	499.9	500.1	500.1	0.9	0.9	151.43	-5.6	3.1	12.1	10.4	1.71	7.101		
600.0	599.7	600.2	600.1	1.1	1.0	148.91	-3.6	6.9	15.0	12.9	2.07	7.239		
700.0	699.4	700.3	700.0	1.3	1.2	145.48	-0.7	12.3	18.5	16.0	2.45	7.527		
800.0	798.9	800.4	799.8	1.5	1.4	141.82	3.0	19.3	22.6	19.7	2.86	7.897		
900.0	898.3	900.4	899.3	1.8	1.7	138.31	7.5	27.8	27.4	24.1	3.30	8.304		
1,000.0	997.4	1,000.4	998.7	2.0	1.9	135.10	12.8	37.8	33.0	29.2	3.79	8.716		
1,100.0	1,096.3	1,100.4	1,097.8	2.3	2.2	132.23	18.9	49.3	39.3	35.0	4.32	9.114		
1,200.0	1,194.9	1,200.3	1,196.6	2.7	2.5	129.70	25.9	62.3	46.4	41.5	4.90	9.486		
1,300.0	1,293.3	1,300.2	1,295.1	3.0	2.8	127.48	33.6	76.9	54.3	48.8	5.53	9.826		
1,400.0	1,391.2	1,400.0	1,393.2	3.4	3.2	125.53	42.1	92.9	63.0	56.8	6.22	10.133		
1,500.0	1,488.9	1,499.7	1,491.0	3.8	3.5	123.81	51.5	110.5	72.4	65.5	6.96	10.408		
1,600.0	1,586.1	1,599.2	1,588.2	4.2	3.9	122.89	61.2	128.8	82.7	75.0	7.72	10.717		
1,700.0	1,682.9	1,698.5	1,685.4	4.7	4.3	123.04	70.9	147.0	94.0	85.5	8.49	11.080		
1,800.0	1,779.5	1,797.8	1,782.6	5.2	4.7	123.64	80.6	165.2	105.8	96.5	9.25	11.440		
1,900.0	1,876.1	1,897.1	1,879.7	5.6	5.1	124.12	90.3	183.5	117.5	107.5	10.01	11.741		
2,000.0	1,972.7	1,996.4	1,976.8	6.1	5.5	124.51	100.0	201.7	129.3	118.5	10.78	11.995		
2,100.0	2,069.3	2,095.7	2,074.0	6.6	5.8	124.83	109.6	219.9	141.1	129.5	11.55	12.212		
2,200.0	2,165.9	2,195.0	2,171.1	7.1	6.2	125.11	119.3	238.1	152.8	140.5	12.33	12.399		
2,300.0	2,262.5	2,294.3	2,268.2	7.5	6.6	125.35	129.0	256.4	164.6	151.5	13.10	12.563		
2,400.0	2,359.1	2,393.6	2,365.4	8.0	7.0	125.55	138.7	274.6	176.4	162.5	13.88	12.707		
2,500.0	2,455.7	2,492.8	2,462.3	8.5	7.4	125.76	148.4	292.7	188.2	173.5	14.66	12.840		
2,600.0	2,552.3	2,591.4	2,559.1	9.0	7.8	126.31	157.3	309.6	200.2	184.9	15.37	13.027		
2,700.0	2,648.8	2,689.9	2,656.0	9.5	8.1	127.26	165.5	325.0	212.6	196.6	16.02	13.273		
2,800.0	2,745.4	2,788.2	2,753.0	9.9	8.4	128.52	172.9	338.9	225.5	208.9	16.60	13.579		
2,900.0	2,842.1	2,886.2	2,850.0	10.4	8.7	130.04	179.5	351.3	238.6	221.5	17.12	13.940		
3,000.0	2,939.2	2,984.1	2,947.2	10.9	9.0	131.54	185.3	362.2	251.3	233.7	17.57	14.303		
3,100.0	3,036.7	3,081.9	3,044.4	11.3	9.2	132.97	190.3	371.6	263.4	245.4	17.97	14.660		
3,200.0	3,134.5	3,179.7	3,141.8	11.7	9.5	134.35	194.5	379.6	275.0	256.7	18.31	15.014		
3,300.0	3,232.7	3,277.3	3,239.1	12.0	9.6	135.69	198.0	386.1	286.0	267.4	18.61	15.367		
3,400.0	3,331.2	3,374.8	3,336.5	12.4	9.8	137.00	200.6	391.1	296.5	277.7	18.86	15.720		
3,500.0	3,430.0	3,472.2	3,433.8	12.7	10.0	138.29	202.5	394.6	306.5	287.4	19.07	16.074		
3,600.0	3,529.1	3,569.5	3,531.0	13.0	10.1	139.58	203.6	396.7	316.0	296.7	19.23	16.432		
3,700.0	3,628.3	3,666.8	3,628.3	13.2	10.2	140.86	204.0	397.3	324.9	305.6	19.35	16.789		
3,800.0	3,727.8	3,766.3	3,727.8	13.4	10.3	142.03	204.0	397.3	333.0	313.5	19.48	17.096		
3,900.0	3,827.4	3,865.9	3,827.4	13.6	10.4	142.95	204.0	397.3	339.8	320.2	19.62	17.314		
4,000.0	3,927.2	3,965.7	3,927.2	13.8	10.5	143.66	204.0	397.3	345.2	325.4	19.79	17.443		
4,100.0	4,027.1	4,065.6	4,027.1	14.0	10.6	144.18	204.0	397.3	349.3	329.3	19.98	17.483		
4,200.0	4,127.0	4,165.5	4,127.0	14.1	10.8	144.51	204.0	397.3	352.0	331.8	20.19	17.437		
4,300.0	4,227.0	4,265.5	4,227.0	14.2	10.9	144.67	204.0	397.3	353.3	332.9	20.41	17.308		
4,400.0	4,327.0	4,365.5	4,327.0	14.3	11.0	-179.72	204.0	397.3	353.4	332.5	20.93	16.889		
4,500.0	4,427.0	4,465.5	4,427.0	14.4	11.1	-179.72	204.0	397.3	353.4	332.2	21.19	16.677		
4,600.0	4,527.0	4,565.5	4,527.0	14.5	11.2	-179.72	204.0	397.3	353.4	332.0	21.46	16.470		
4,700.0	4,627.0	4,665.5	4,627.0	14.6	11.4	-179.72	204.0	397.3	353.4	331.7	21.73	16.266		
4,800.0	4,727.0	4,765.5	4,727.0	14.7	11.5	-179.72	204.0	397.3	353.4	331.4	22.00	16.065		
4,900.0	4,827.0	4,865.5	4,827.0	14.8	11.6	-179.72	204.0	397.3	353.4	331.1	22.27	15.868		
5,000.0	4,927.0	4,965.5	4,927.0	14.9	11.7	-179.72	204.0	397.3	353.4	330.9	22.55	15.675		
5,100.0	5,027.0	5,065.5	5,027.0	15.0	11.9	-179.72	204.0	397.3	353.4	330.6	22.82	15.485		

CC - Min centre to center distance or convergent point, SF - min separation factor, ES - min ellipse separation

# Anticollision Report

<b>Company:</b>	EnCana Oil & Gas (USA) Inc	<b>Local Co-ordinate Reference:</b>	Well Drieth 1A-6H-A368
<b>Project:</b>	DJ Wattenberg	<b>TVD Reference:</b>	WELL @ 5100.0ft (Original Well Elev)
<b>Reference Site:</b>	S6-T3N-R68W (Zisch/Drieth 1)	<b>MD Reference:</b>	WELL @ 5100.0ft (Original Well Elev)
<b>Site Error:</b>	0.0ft	<b>North Reference:</b>	True
<b>Reference Well:</b>	Drieth 1A-6H-A368	<b>Survey Calculation Method:</b>	Minimum Curvature
<b>Well Error:</b>	0.0ft	<b>Output errors are at</b>	2.00 sigma
<b>Reference Wellbore</b>	Hz	<b>Database:</b>	USA EDM 5000 Multi Users DB
<b>Reference Design:</b>	Plan #1	<b>Offset TVD Reference:</b>	Offset Datum

Offset Design S6-T3N-R68W (Zisch/Drieth 1) - Drieth 1B-6H-A368 - Hz - Plan #1													Offset Site Error:	0.0 ft
Survey Program: 0-MWD													Offset Well Error:	0.0 ft
Reference		Offset		Semi Major Axis			Distance							Warning
Measured Depth (ft)	Vertical Depth (ft)	Measured Depth (ft)	Vertical Depth (ft)	Reference (ft)	Offset (ft)	Highside Toolface (°)	Offset Wellbore Centre +N/-S (ft)	+E/-W (ft)	Between Centres (ft)	Between Ellipses (ft)	Total Uncertainty Axis	Separation Factor		
5,200.0	5,127.0	5,165.5	5,127.0	15.1	12.0	-179.72	204.0	397.3	353.4	330.3	23.10	15.298		
5,300.0	5,227.0	5,265.5	5,227.0	15.2	12.1	-179.72	204.0	397.3	353.4	330.0	23.38	15.115		
5,400.0	5,327.0	5,365.5	5,327.0	15.3	12.3	-179.72	204.0	397.3	353.4	329.8	23.66	14.935		
5,500.0	5,427.0	5,465.5	5,427.0	15.4	12.4	-179.72	204.0	397.3	353.4	329.5	23.95	14.758		
5,600.0	5,527.0	5,565.5	5,527.0	15.5	12.5	-179.72	204.0	397.3	353.4	329.2	24.23	14.584		
5,700.0	5,627.0	5,665.5	5,627.0	15.6	12.7	-179.72	204.0	397.3	353.4	328.9	24.52	14.414		
5,800.0	5,727.0	5,765.5	5,727.0	15.7	12.8	-179.72	204.0	397.3	353.4	328.6	24.81	14.247		
5,900.0	5,827.0	5,865.5	5,827.0	15.8	12.9	-179.72	204.0	397.3	353.4	328.3	25.10	14.082		
6,000.0	5,927.0	5,965.5	5,927.0	16.0	13.1	-179.72	204.0	397.3	353.4	328.0	25.39	13.921		
6,100.0	6,027.0	6,065.5	6,027.0	16.1	13.2	-179.72	204.0	397.3	353.4	327.7	25.68	13.763		
6,200.0	6,127.0	6,165.5	6,127.0	16.2	13.4	-179.72	204.0	397.3	353.4	327.4	25.97	13.607		
6,300.0	6,227.0	6,265.5	6,227.0	16.3	13.5	-179.72	204.0	397.3	353.4	327.2	26.27	13.455		
6,400.0	6,327.0	6,365.5	6,327.0	16.4	13.6	-89.73	204.0	397.3	353.4	327.2	26.24	13.467		
6,443.1	6,370.1	6,408.6	6,370.1	16.4	13.7	-90.00	204.0	397.3	353.4	327.1	26.36	13.407		
6,500.0	6,426.6	6,465.1	6,426.6	16.5	13.8	-90.99	204.0	397.3	353.5	326.9	26.59	13.293		
6,600.0	6,524.2	6,562.7	6,524.2	16.4	13.9	-94.31	204.0	397.3	354.5	327.5	27.04	13.113		
6,700.0	6,617.8	6,663.3	6,624.6	16.3	14.0	-98.92	204.0	392.4	358.2	330.8	27.34	13.103		
6,800.0	6,705.6	6,769.5	6,728.8	16.1	14.0	-103.44	204.0	372.2	364.3	337.1	27.22	13.383		
6,900.0	6,785.9	6,881.3	6,834.0	15.9	13.8	-107.68	204.0	334.6	372.4	345.7	26.72	13.938		
7,000.0	6,857.2	6,999.2	6,937.1	15.8	13.6	-111.55	204.0	277.7	381.8	355.8	25.96	14.705		
7,100.0	6,918.0	7,123.4	7,034.1	15.8	13.3	-114.93	204.0	200.4	391.5	366.3	25.22	15.522		
7,200.0	6,967.2	7,254.0	7,120.0	16.0	13.2	-117.73	204.0	102.3	400.8	375.9	24.90	16.092		
7,300.0	7,003.8	7,390.3	7,189.3	16.4	13.6	-119.87	204.0	-14.8	408.5	383.0	25.47	16.036		
7,400.0	7,027.2	7,531.1	7,236.2	17.2	15.0	-121.27	204.0	-147.4	413.8	386.6	27.25	15.186		
7,500.0	7,036.8	7,674.7	7,256.4	18.5	17.1	-121.88	204.0	-289.3	416.2	385.9	30.27	13.751		
7,600.0	7,037.0	7,783.8	7,257.0	20.0	18.9	-121.90	204.0	-398.4	416.3	383.0	33.32	12.492		
7,700.0	7,037.0	7,883.8	7,257.0	21.8	20.8	-121.90	204.1	-498.4	416.3	379.8	36.46	11.419		
7,800.0	7,037.0	7,983.8	7,257.0	23.7	22.8	-121.90	204.1	-598.4	416.3	376.5	39.79	10.463		
7,900.0	7,037.0	8,083.8	7,257.0	25.7	24.8	-121.90	204.1	-698.4	416.3	373.0	43.27	9.621		
8,000.0	7,037.0	8,183.8	7,257.0	27.8	27.0	-121.90	204.1	-798.4	416.3	369.4	46.87	8.881		
8,100.0	7,037.0	8,283.8	7,257.0	29.9	29.1	-121.90	204.1	-898.4	416.3	365.7	50.57	8.232		
8,200.0	7,037.0	8,383.8	7,257.0	32.1	31.4	-121.90	204.1	-998.4	416.3	361.9	54.34	7.661		
8,300.0	7,037.0	8,483.8	7,257.0	34.3	33.6	-121.90	204.1	-1,098.4	416.3	358.1	58.17	7.157		
8,400.0	7,037.0	8,583.8	7,257.0	36.6	35.9	-121.90	204.1	-1,198.4	416.3	354.2	62.05	6.709		
8,500.0	7,037.0	8,683.8	7,257.0	38.9	38.2	-121.90	204.1	-1,298.4	416.3	350.3	65.97	6.311		
8,600.0	7,037.0	8,783.8	7,257.0	41.2	40.6	-121.90	204.1	-1,398.4	416.3	346.4	69.92	5.954		
8,700.0	7,037.0	8,883.8	7,257.0	43.5	42.9	-121.90	204.1	-1,498.4	416.3	342.4	73.90	5.633		
8,800.0	7,037.0	8,983.8	7,257.0	45.8	45.3	-121.90	204.1	-1,598.4	416.3	338.4	77.90	5.344		
8,900.0	7,037.0	9,083.8	7,257.0	48.2	47.7	-121.90	204.2	-1,698.4	416.3	334.3	81.93	5.081		
9,000.0	7,037.0	9,183.8	7,257.0	50.6	50.0	-121.90	204.2	-1,798.4	416.3	330.3	85.97	4.842		
9,100.0	7,037.0	9,283.8	7,257.0	52.9	52.4	-121.90	204.2	-1,898.4	416.3	326.2	90.03	4.624		
9,200.0	7,037.0	9,383.8	7,257.0	55.3	54.8	-121.90	204.2	-1,998.4	416.3	322.2	94.10	4.424		
9,300.0	7,037.0	9,483.8	7,257.0	57.7	57.2	-121.90	204.2	-2,098.4	416.3	318.1	98.18	4.240		
9,400.0	7,037.0	9,583.8	7,257.0	60.1	59.6	-121.90	204.2	-2,198.4	416.3	314.0	102.27	4.070		
9,500.0	7,037.0	9,683.8	7,257.0	62.5	62.1	-121.90	204.2	-2,298.4	416.3	309.9	106.37	3.913		
9,600.0	7,037.0	9,783.8	7,257.0	64.9	64.5	-121.90	204.2	-2,398.4	416.3	305.8	110.48	3.768		
9,700.0	7,037.0	9,883.8	7,257.0	67.3	66.9	-121.90	204.2	-2,498.4	416.3	301.7	114.59	3.633		
9,800.0	7,037.0	9,983.8	7,257.0	69.8	69.3	-121.90	204.2	-2,598.4	416.3	297.5	118.72	3.506		
9,900.0	7,037.0	10,083.8	7,257.0	72.2	71.8	-121.90	204.2	-2,698.4	416.3	293.4	122.84	3.389		
10,000.0	7,037.0	10,183.8	7,257.0	74.6	74.2	-121.90	204.3	-2,798.4	416.3	289.3	126.98	3.278		
10,100.0	7,037.0	10,283.8	7,257.0	77.0	76.6	-121.91	204.3	-2,898.4	416.3	285.1	131.11	3.175		
10,200.0	7,037.0	10,383.8	7,257.0	79.5	79.1	-121.91	204.3	-2,998.4	416.3	281.0	135.25	3.078		

CC - Min centre to center distance or convergent point, SF - min separation factor, ES - min ellipse separation

# Anticollision Report

<b>Company:</b>	EnCana Oil & Gas (USA) Inc	<b>Local Co-ordinate Reference:</b>	Well Drieth 1A-6H-A368
<b>Project:</b>	DJ Wattenberg	<b>TVD Reference:</b>	WELL @ 5100.0ft (Original Well Elev)
<b>Reference Site:</b>	S6-T3N-R68W (Zisch/Drieth 1)	<b>MD Reference:</b>	WELL @ 5100.0ft (Original Well Elev)
<b>Site Error:</b>	0.0ft	<b>North Reference:</b>	True
<b>Reference Well:</b>	Drieth 1A-6H-A368	<b>Survey Calculation Method:</b>	Minimum Curvature
<b>Well Error:</b>	0.0ft	<b>Output errors are at</b>	2.00 sigma
<b>Reference Wellbore</b>	Hz	<b>Database:</b>	USA EDM 5000 Multi Users DB
<b>Reference Design:</b>	Plan #1	<b>Offset TVD Reference:</b>	Offset Datum

Offset Design													S6-T3N-R68W (Zisch/Drieth 1) - Drieth 1B-6H-A368 - Hz - Plan #1		Offset Site Error:		0.0 ft			
Survey Program:				0-MWD														Offset Well Error:		0.0 ft
Reference		Offset		Semi Major Axis			Distance													
Measured Depth (ft)	Vertical Depth (ft)	Measured Depth (ft)	Vertical Depth (ft)	Reference (ft)	Offset (ft)	Highside Toolface (°)	Offset Wellbore Centre +N/-S (ft)	+E/-W (ft)	Between Centres (ft)	Between Ellipses (ft)	Total Uncertainty Axis	Separation Factor	Warning							
10,300.0	7,037.0	10,483.8	7,257.0	81.9	81.5	-121.91	204.3	-3,098.4	416.3	276.9	139.40	2.986								
10,400.0	7,037.0	10,583.8	7,257.0	84.3	84.0	-121.91	204.3	-3,198.4	416.3	272.7	143.55	2.900								
10,500.0	7,037.0	10,683.8	7,257.0	86.8	86.4	-121.91	204.3	-3,298.4	416.3	268.6	147.70	2.818								
10,600.0	7,037.0	10,783.8	7,257.0	89.2	88.8	-121.91	204.3	-3,398.4	416.3	264.4	151.86	2.741								
10,700.0	7,037.0	10,883.8	7,257.0	91.7	91.3	-121.91	204.3	-3,498.4	416.3	260.2	156.01	2.668								
10,800.0	7,037.0	10,983.8	7,257.0	94.1	93.7	-121.91	204.3	-3,598.4	416.3	256.1	160.18	2.599								
10,900.0	7,037.0	11,083.8	7,257.0	96.5	96.2	-121.91	204.3	-3,698.4	416.3	251.9	164.34	2.533								
11,000.0	7,037.0	11,183.8	7,257.0	99.0	98.6	-121.91	204.3	-3,798.4	416.3	247.8	168.50	2.470								
11,100.0	7,037.0	11,283.8	7,257.0	101.4	101.1	-121.91	204.3	-3,898.4	416.3	243.6	172.67	2.411								
11,200.0	7,037.0	11,383.8	7,257.0	103.9	103.6	-121.91	204.4	-3,998.4	416.3	239.4	176.84	2.354								
11,300.0	7,037.0	11,483.8	7,257.0	106.3	106.0	-121.91	204.4	-4,098.4	416.2	235.2	181.01	2.300								
11,400.0	7,037.0	11,583.8	7,257.0	108.8	108.5	-121.91	204.4	-4,198.4	416.2	231.1	185.18	2.248								
11,453.2	7,037.0	11,637.0	7,257.0	110.1	109.8	-121.91	204.4	-4,251.6	416.2	228.8	187.40	2.221								
11,472.5	7,037.0	11,655.4	7,257.0	110.6	110.2	-121.91	204.4	-4,270.0	416.2	228.1	188.19	2.212 SF								

# Anticollision Report

<b>Company:</b>	EnCana Oil & Gas (USA) Inc	<b>Local Co-ordinate Reference:</b>	Well Drieth 1A-6H-A368
<b>Project:</b>	DJ Wattenberg	<b>TVD Reference:</b>	WELL @ 5100.0ft (Original Well Elev)
<b>Reference Site:</b>	S6-T3N-R68W (Zisch/Drieth 1)	<b>MD Reference:</b>	WELL @ 5100.0ft (Original Well Elev)
<b>Site Error:</b>	0.0ft	<b>North Reference:</b>	True
<b>Reference Well:</b>	Drieth 1A-6H-A368	<b>Survey Calculation Method:</b>	Minimum Curvature
<b>Well Error:</b>	0.0ft	<b>Output errors are at</b>	2.00 sigma
<b>Reference Wellbore</b>	Hz	<b>Database:</b>	USA EDM 5000 Multi Users DB
<b>Reference Design:</b>	Plan #1	<b>Offset TVD Reference:</b>	Offset Datum

Offset Design S6-T3N-R68W (Zisch/Drieth 1) - Drieth 1C-6H-A368 - Hz - Plan #1													Offset Site Error: 0.0 ft	
Survey Program: 0-MWD													Offset Well Error: 0.0 ft	
Reference		Offset		Semi Major Axis			Distance							Warning
Measured Depth (ft)	Vertical Depth (ft)	Measured Depth (ft)	Vertical Depth (ft)	Reference (ft)	Offset (ft)	Highside Toolface (°)	Offset Wellbore Centre +N/-S (ft)	+E/-W (ft)	Between Centres (ft)	Between Ellipses (ft)	Total Uncertainty Axis	Separation Factor		
0.0	0.0	0.0	0.0	0.0	0.0	180.00	-18.2	0.0	18.2					
100.0	100.0	99.0	99.0	0.2	0.2	180.00	-18.2	0.0	18.2	17.9	0.30	60.279		
200.0	200.0	199.0	199.0	0.3	0.3	180.00	-18.2	0.0	18.2	17.6	0.65	27.979	CC, ES	
300.0	300.0	299.0	299.0	0.5	0.5	145.93	-18.2	0.0	18.9	17.9	1.00	18.925		
400.0	400.0	399.0	399.0	0.7	0.7	149.90	-18.2	0.0	21.2	19.8	1.35	15.663		
500.0	499.9	498.8	498.8	0.9	0.8	152.96	-18.5	0.8	25.1	23.4	1.70	14.774	SF	
600.0	599.7	598.6	598.5	1.1	1.0	153.33	-19.2	3.3	31.0	28.9	2.06	15.056		
700.0	699.4	698.2	698.0	1.3	1.2	152.17	-20.5	7.4	38.6	36.2	2.42	15.944		
800.0	798.9	797.6	797.2	1.5	1.4	150.33	-22.4	13.1	48.2	45.4	2.81	17.169		
900.0	898.3	896.7	896.1	1.8	1.6	148.31	-24.7	20.5	59.6	56.4	3.21	18.577		
1,000.0	997.4	995.5	994.4	2.0	1.8	146.36	-27.5	29.5	72.9	69.3	3.63	20.069		
1,100.0	1,096.3	1,093.9	1,092.2	2.3	2.1	144.56	-30.8	40.0	88.3	84.2	4.09	21.575		
1,200.0	1,194.9	1,191.9	1,189.3	2.7	2.3	142.94	-34.6	52.1	105.5	101.0	4.58	23.049		
1,300.0	1,293.3	1,289.3	1,285.7	3.0	2.6	141.50	-38.9	65.7	124.8	119.7	5.10	24.463		
1,400.0	1,391.2	1,386.2	1,381.3	3.4	2.9	140.22	-43.7	80.7	146.0	140.3	5.66	25.798		
1,500.0	1,488.9	1,483.4	1,477.1	3.8	3.2	139.26	-48.7	96.8	168.9	162.6	6.24	27.069		
1,600.0	1,586.1	1,580.4	1,572.6	4.2	3.5	138.83	-53.8	112.9	193.1	186.3	6.83	28.254		
1,700.0	1,682.9	1,677.1	1,667.8	4.7	3.9	138.77	-58.9	128.9	218.6	211.1	7.44	29.371		
1,800.0	1,779.5	1,773.6	1,762.9	5.2	4.2	138.99	-63.9	144.9	244.7	236.7	8.06	30.360		
1,900.0	1,876.1	1,870.1	1,857.9	5.6	4.5	139.17	-68.9	160.9	270.9	262.2	8.68	31.189		
2,000.0	1,972.7	1,966.7	1,953.0	6.1	4.8	139.32	-74.0	176.9	297.0	287.7	9.31	31.894		
2,100.0	2,069.3	2,063.2	2,048.0	6.6	5.2	139.44	-79.0	192.8	323.1	313.2	9.94	32.499		
2,200.0	2,165.9	2,159.7	2,143.1	7.1	5.5	139.55	-84.1	208.8	349.3	338.7	10.58	33.024		
2,300.0	2,262.5	2,256.2	2,238.2	7.5	5.8	139.64	-89.1	224.8	375.4	364.2	11.21	33.482		
2,400.0	2,359.1	2,352.7	2,333.2	8.0	6.2	139.72	-94.1	240.8	401.6	389.7	11.85	33.886		
2,500.0	2,455.7	2,449.3	2,428.3	8.5	6.5	139.79	-99.2	256.8	427.7	415.2	12.49	34.245		
2,600.0	2,552.3	2,545.8	2,523.3	9.0	6.8	139.85	-104.2	272.8	453.8	440.7	13.13	34.565		
2,700.0	2,648.8	2,642.3	2,618.4	9.5	7.2	139.90	-109.3	288.8	480.0	466.2	13.77	34.852		

# Anticollision Report

<b>Company:</b>	EnCana Oil & Gas (USA) Inc	<b>Local Co-ordinate Reference:</b>	Well Drieth 1A-6H-A368
<b>Project:</b>	DJ Wattenberg	<b>TVD Reference:</b>	WELL @ 5100.0ft (Original Well Elev)
<b>Reference Site:</b>	S6-T3N-R68W (Zisch/Drieth 1)	<b>MD Reference:</b>	WELL @ 5100.0ft (Original Well Elev)
<b>Site Error:</b>	0.0ft	<b>North Reference:</b>	True
<b>Reference Well:</b>	Drieth 1A-6H-A368	<b>Survey Calculation Method:</b>	Minimum Curvature
<b>Well Error:</b>	0.0ft	<b>Output errors are at</b>	2.00 sigma
<b>Reference Wellbore</b>	Hz	<b>Database:</b>	USA EDM 5000 Multi Users DB
<b>Reference Design:</b>	Plan #1	<b>Offset TVD Reference:</b>	Offset Datum

Offset Design S6-T3N-R68W (Zisch/Drieth 1) - Drieth 1D-6H-A368 - Hz - Plan #1													Offset Site Error: 0.0 ft	
Survey Program: 0-MWD													Offset Well Error: 0.0 ft	
Reference		Offset		Semi Major Axis			Distance							
Measured Depth	Vertical Depth	Measured Depth	Vertical Depth	Reference	Offset	Highside Toolface	Offset Wellbore Centre		Between Centres	Between Ellipses	Total Uncertainty Axis	Separation Factor	Warning	
(ft)	(ft)	(ft)	(ft)	(ft)	(ft)	(°)	+N/-S (ft)	+E/-W (ft)	(ft)	(ft)				
0.0	0.0	0.0	0.0	0.0	0.0	180.00	-29.1	0.0	29.2					
100.0	100.0	99.0	99.0	0.2	0.2	180.00	-29.1	0.0	29.1	28.8	0.30	96.446		
200.0	200.0	199.0	199.0	0.3	0.3	180.00	-29.1	0.0	29.1	28.5	0.65	44.766	CC, ES	
300.0	300.0	299.0	299.0	0.5	0.5	145.37	-29.1	0.0	29.9	28.9	1.00	29.848		
400.0	400.0	398.6	398.6	0.7	0.7	146.96	-29.8	0.6	32.7	31.3	1.35	24.186		
500.0	499.9	498.0	497.9	0.9	0.9	147.82	-31.7	2.2	38.2	36.5	1.70	22.421	SF	
600.0	599.7	597.1	597.0	1.1	1.0	148.06	-35.0	5.1	46.4	44.4	2.06	22.516		
700.0	699.4	695.9	695.5	1.3	1.2	147.90	-39.5	9.0	57.4	54.9	2.43	23.615		
800.0	798.9	794.1	793.5	1.5	1.4	147.54	-45.2	14.0	71.0	68.2	2.81	25.286		
900.0	898.3	891.8	890.8	1.8	1.7	147.10	-52.2	20.0	87.3	84.1	3.20	27.286		
1,000.0	997.4	988.8	987.2	2.0	1.9	146.64	-60.4	27.1	106.2	102.6	3.61	29.465		
1,100.0	1,096.3	1,085.1	1,082.6	2.3	2.2	146.20	-69.7	35.2	127.8	123.8	4.03	31.728		
1,200.0	1,194.9	1,180.4	1,176.9	2.7	2.4	145.78	-80.1	44.3	152.0	147.5	4.47	34.010		
1,300.0	1,293.3	1,274.8	1,270.1	3.0	2.7	145.39	-91.6	54.3	178.7	173.8	4.93	36.268		
1,400.0	1,391.2	1,368.1	1,361.9	3.4	3.0	145.02	-104.1	65.1	208.0	202.5	5.41	38.473		
1,500.0	1,488.9	1,460.2	1,452.3	3.8	3.4	144.67	-117.5	76.8	239.7	233.8	5.90	40.606		
1,600.0	1,586.1	1,553.0	1,543.1	4.2	3.7	144.37	-132.0	89.4	273.8	267.3	6.42	42.636		
1,700.0	1,682.9	1,646.5	1,634.5	4.7	4.1	144.27	-146.6	102.1	309.2	302.3	6.95	44.474		
1,800.0	1,779.5	1,739.7	1,725.7	5.2	4.4	144.45	-161.3	114.8	345.4	337.9	7.50	46.045		
1,900.0	1,876.1	1,833.0	1,816.9	5.6	4.8	144.59	-175.9	127.6	381.5	373.5	8.05	47.375		
2,000.0	1,972.7	1,926.2	1,908.1	6.1	5.2	144.71	-190.5	140.3	417.7	409.1	8.61	48.513		
2,100.0	2,069.3	2,019.4	1,999.3	6.6	5.5	144.81	-205.1	153.0	453.8	444.7	9.17	49.496		
2,200.0	2,165.9	2,112.7	2,090.5	7.1	5.9	144.90	-219.8	165.7	490.0	480.2	9.73	50.354		

# Anticollision Report

<b>Company:</b>	EnCana Oil & Gas (USA) Inc	<b>Local Co-ordinate Reference:</b>	Well Drieth 1A-6H-A368
<b>Project:</b>	DJ Wattenberg	<b>TVD Reference:</b>	WELL @ 5100.0ft (Original Well Elev)
<b>Reference Site:</b>	S6-T3N-R68W (Zisch/Drieth 1)	<b>MD Reference:</b>	WELL @ 5100.0ft (Original Well Elev)
<b>Site Error:</b>	0.0ft	<b>North Reference:</b>	True
<b>Reference Well:</b>	Drieth 1A-6H-A368	<b>Survey Calculation Method:</b>	Minimum Curvature
<b>Well Error:</b>	0.0ft	<b>Output errors are at</b>	2.00 sigma
<b>Reference Wellbore</b>	Hz	<b>Database:</b>	USA EDM 5000 Multi Users DB
<b>Reference Design:</b>	Plan #1	<b>Offset TVD Reference:</b>	Offset Datum

Offset Design S6-T3N-R68W (Zisch/Drieth 1) - Drieth 1E-6H-A368 - Hz - Plan #1													Offset Site Error: 0.0 ft	
Survey Program: 0-MWD													Offset Well Error: 0.0 ft	
Reference		Offset		Semi Major Axis			Distance						Warning	
Measured Depth (ft)	Vertical Depth (ft)	Measured Depth (ft)	Vertical Depth (ft)	Reference (ft)	Offset (ft)	Highside Toolface (°)	Offset Wellbore Centre +N/-S (ft)	+E/-W (ft)	Between Centres (ft)	Between Ellipses (ft)	Total Uncertainty Axis	Separation Factor		
0.0	0.0	0.0	0.0	0.0	0.0	180.00	-40.1	0.0	40.1					
100.0	100.0	99.0	99.0	0.2	0.2	180.00	-40.1	0.0	40.1	39.8	0.30	132.613		
200.0	200.0	199.0	199.0	0.3	0.3	180.00	-40.1	0.0	40.1	39.4	0.65	61.553 CC, ES		
300.0	300.0	298.4	298.4	0.5	0.5	144.57	-40.8	0.4	41.5	40.5	1.00	41.566		
400.0	400.0	397.6	397.5	0.7	0.7	144.98	-43.1	1.5	46.0	44.6	1.35	34.069		
500.0	499.9	496.6	496.4	0.9	0.9	145.51	-46.9	3.4	53.4	51.7	1.70	31.343		
600.0	599.7	595.1	594.8	1.1	1.1	146.02	-52.2	6.1	63.7	61.7	2.06	30.916 SF		
700.0	699.4	693.2	692.6	1.3	1.3	146.47	-59.0	9.5	77.1	74.6	2.43	31.746		
800.0	798.9	790.6	789.5	1.5	1.5	146.83	-67.3	13.6	93.3	90.5	2.80	33.312		
900.0	898.3	887.2	885.6	1.8	1.7	147.10	-76.9	18.4	112.4	109.2	3.18	35.321		
1,000.0	997.4	983.0	980.6	2.0	2.0	147.30	-87.8	23.9	134.4	130.8	3.57	37.597		
1,100.0	1,096.3	1,077.8	1,074.3	2.3	2.3	147.44	-100.1	30.0	159.2	155.2	3.98	40.026		
1,200.0	1,194.9	1,171.4	1,166.8	2.7	2.6	147.52	-113.5	36.8	186.8	182.4	4.39	42.531		
1,300.0	1,293.3	1,263.9	1,257.8	3.0	2.9	147.57	-128.1	44.1	217.2	212.4	4.82	45.062		
1,400.0	1,391.2	1,355.1	1,347.3	3.4	3.2	147.58	-143.8	52.0	250.2	245.0	5.26	47.583		
1,500.0	1,488.9	1,444.9	1,435.1	3.8	3.6	147.56	-160.5	60.3	286.0	280.3	5.71	50.069		
1,600.0	1,586.1	1,533.2	1,521.2	4.2	3.9	147.52	-178.1	69.1	324.3	318.1	6.18	52.503		
1,700.0	1,682.9	1,620.0	1,605.5	4.7	4.3	147.45	-196.6	78.4	365.2	358.5	6.65	54.875		
1,800.0	1,779.5	1,705.8	1,688.6	5.2	4.7	147.55	-216.0	88.1	407.9	400.7	7.15	57.024		
1,900.0	1,876.1	1,796.0	1,775.7	5.6	5.1	147.60	-236.9	98.5	451.1	443.5	7.67	58.836		
2,000.0	1,972.7	1,886.2	1,862.8	6.1	5.6	147.63	-257.7	109.0	494.3	486.2	8.19	60.392		

## Anticollision Report

<b>Company:</b>	EnCana Oil & Gas (USA) Inc	<b>Local Co-ordinate Reference:</b>	Well Drieth 1A-6H-A368
<b>Project:</b>	DJ Wattenberg	<b>TVD Reference:</b>	WELL @ 5100.0ft (Original Well Elev)
<b>Reference Site:</b>	S6-T3N-R68W (Zisch/Drieth 1)	<b>MD Reference:</b>	WELL @ 5100.0ft (Original Well Elev)
<b>Site Error:</b>	0.0ft	<b>North Reference:</b>	True
<b>Reference Well:</b>	Drieth 1A-6H-A368	<b>Survey Calculation Method:</b>	Minimum Curvature
<b>Well Error:</b>	0.0ft	<b>Output errors are at</b>	2.00 sigma
<b>Reference Wellbore</b>	Hz	<b>Database:</b>	USA EDM 5000 Multi Users DB
<b>Reference Design:</b>	Plan #1	<b>Offset TVD Reference:</b>	Offset Datum

Reference Depths are relative to WELL @ 5100.0ft (Original Well Elev)

Offset Depths are relative to Offset Datum

Central Meridian is -105.500000 °

Coordinates are relative to: Drieth 1A-6H-A368

Coordinate System is US State Plane 1983, Colorado Northern Zone

Grid Convergence at Surface is: 0.30°

