

LEGEND:

 PROPOSED LOCATION



EE3 LLC.

HEBRON #02-07H & MARR #06-07H
SECTION 7, T7N, R80W, 6th P.M.
NW 1/4 NE 1/4



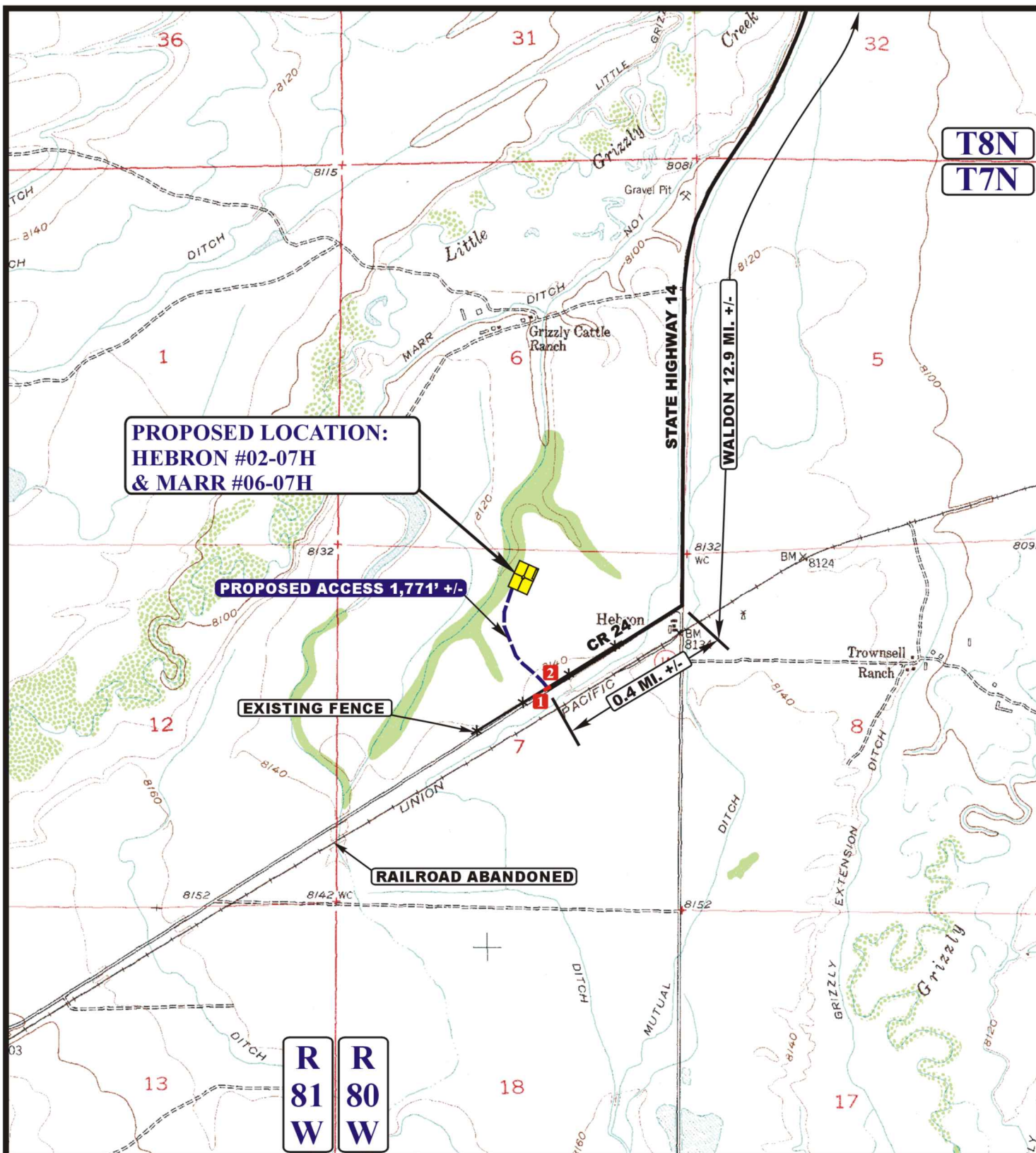
Uintah Engineering & Land Surveying
85 South 200 East Vernal, Utah 84078
(435) 789-1017 * FAX (435) 789-1813

ACCESS ROAD
MAP

12 **04** **08**
MONTH DAY YEAR

SCALE: 1:100,000 DRAWN BY: J.H. REV: 04-15-13 J.L.H.





LEGEND:

- EXISTING ROAD
- PROPOSED ACCESS ROAD
- EXISTING FENCE
- 18" CMP REQUIRED
- INSTALL CATTLEGUARD



Uintah Engineering & Land Surveying
 85 South 200 East Vernal, Utah 84078
 (435) 789-1017 * FAX (435) 789-1813



EE3 LLC.

HEBRON #02-07H & MARR #06-07H
SECTION 7, T7N, R80W, 6th P.M.
NW 1/4 NE 1/4

ACCESS ROAD
MAP

12 04 08
 MONTH DAY YEAR

SCALE: 1" = 2000' DRAWN BY: J.H. REV: 04-15-13 J.L.H.

B
TOPO