

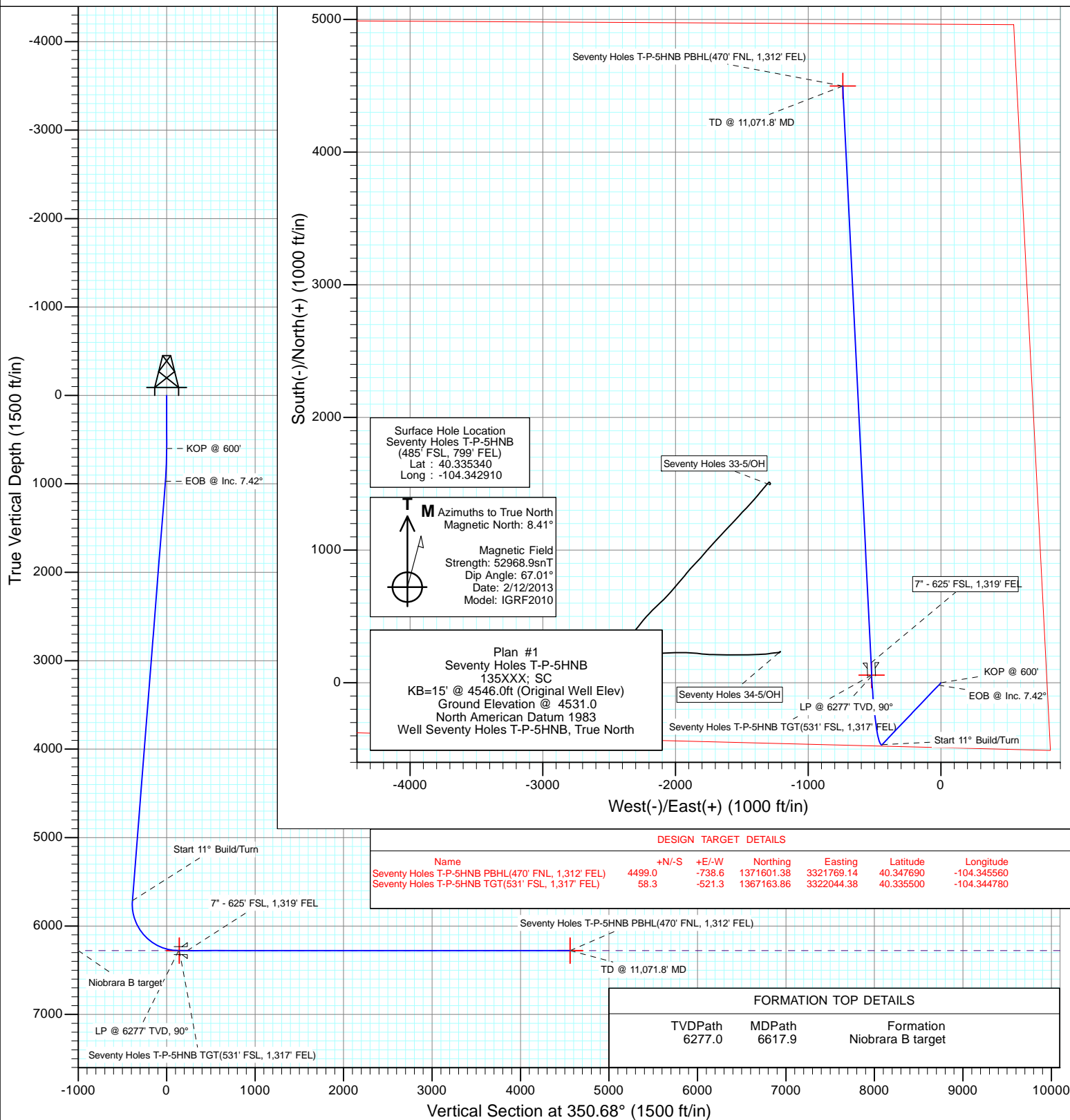


Project: Weld County
Site: Seventy Holes 44-5 Pad
Well: Seventy Holes T-P-5HNB
Wellbore: OH
Design: Plan #1



SECTION DETAILS

Sec	MD	Inc	Azi	TVD	+N/-S	+E/-W	Dleg	TFace	VSec	Target
1	0.0	0.00	0.00	0.0	0.0	0.0	0.00	0.00	0.0	
2	600.0	0.00	0.00	600.0	0.0	0.0	0.00	0.00	0.0	
3	971.1	7.42	223.57	970.1	-17.4	-16.5	2.00	223.57	-14.5	
4	5753.3	7.42	223.57	5712.2	-465.0	-442.4	0.00	0.00	-387.2	
5	6618.0	90.00	357.20	6277.0	50.6	-520.9	11.00	133.39	134.3	
6	11071.8	90.00	357.20	6277.0	4499.0	-738.6	0.00	0.00	4559.3	Seventy Holes T-P-5HNB PBHL(470' FNL, 1,312' FEL)



Cathedral Energy Services

Planning Report

Database:	USA EDM 5000 Multi Users DB	Local Co-ordinate Reference:	Well Seventy Holes T-P-5HNB
Company:	Bonanza Creek Energy Operating Company, LLC	TVD Reference:	KB=15' @ 4546.0ft (Original Well Elev)
Project:	Weld County	MD Reference:	KB=15' @ 4546.0ft (Original Well Elev)
Site:	Seventy Holes 44-5 Pad	North Reference:	True
Well:	Seventy Holes T-P-5HNB	Survey Calculation Method:	Minimum Curvature
Wellbore:	OH		
Design:	Plan #1		

Project	Weld County		
Map System:	US State Plane 1983	System Datum:	Mean Sea Level
Geo Datum:	North American Datum 1983		
Map Zone:	Colorado Northern Zone		

Site		Seventy Holes 44-5 Pad			
Site Position:		Northing:	1,367,090.52 ft	Latitude:	40.335280
From:	Lat/Long	Easting:	3,322,566.69 ft	Longitude:	-104.342910
Position Uncertainty:	0.0 ft	Slot Radius:	13.200 in	Grid Convergence:	0.75 °

Well	Seventy Holes T-P-5HNB					
Well Position	+N/-S	0.0 ft	Northing:	1,367,112.37 ft	Latitude:	40.335340
	+E/-W	0.0 ft	Easting:	3,322,566.41 ft	Longitude:	-104.342910
Position Uncertainty		0.0 ft	Wellhead Elevation:	ft	Ground Level:	4,531.0 ft

Wellbore	OH				
Magnetics	Model Name	Sample Date	Declination	Dip Angle	Field Strength
			(°)	(°)	(nT)
	IGRF2010	2/12/2013	8.41	67.01	52,969

Design	Plan #1			
Audit Notes:				
Version:	Phase:	PLAN	Tie On Depth:	0.0
Vertical Section:	Depth From (TVD)	+N/-S	+E/-W	Direction
	(ft)	(ft)	(ft)	(°)
	0.0	0.0	0.0	350.68

Plan Sections										
Measured Depth	Inclination	Azimuth	Vertical Depth	+N/-S	+E/-W	Dogleg Rate	Build Rate	Turn Rate	TFO	Target
(ft)	(°)	(°)	(ft)	(ft)	(ft)	(°/100ft)	(°/100ft)	(°/100ft)	(°)	
0.0	0.00	0.00	0.0	0.0	0.0	0.00	0.00	0.00	0.00	
600.0	0.00	0.00	600.0	0.0	0.0	0.00	0.00	0.00	0.00	
971.1	7.42	223.57	970.1	-17.4	-16.5	2.00	2.00	0.00	223.57	
5,753.3	7.42	223.57	5,712.2	-465.0	-442.4	0.00	0.00	0.00	0.00	
6,618.0	90.00	357.20	6,277.0	50.6	-520.9	11.00	9.55	15.45	133.39	
11,071.8	90.00	357.20	6,277.0	4,499.0	-738.6	0.00	0.00	0.00	0.00	Seventy Holes T-P-5H

Cathedral Energy Services

Planning Report

Database:	USA EDM 5000 Multi Users DB	Local Co-ordinate Reference:	Well Seventy Holes T-P-5HNB
Company:	Bonanza Creek Energy Operating Company, LLC	TVD Reference:	KB=15' @ 4546.0ft (Original Well Elev)
Project:	Weld County	MD Reference:	KB=15' @ 4546.0ft (Original Well Elev)
Site:	Seventy Holes 44-5 Pad	North Reference:	True
Well:	Seventy Holes T-P-5HNB	Survey Calculation Method:	Minimum Curvature
Wellbore:	OH		
Design:	Plan #1		

Planned Survey

Measured Depth (ft)	Inclination (°)	Azimuth (°)	Vertical Depth (ft)	+N/-S (ft)	+E/-W (ft)	Vertical Section (ft)	Dogleg Rate (°/100ft)	Build Rate (°/100ft)	Comments / Formations
0.0	0.00	0.00	0.0	0.0	0.0	0.0	0.00	0.00	
100.0	0.00	0.00	100.0	0.0	0.0	0.0	0.00	0.00	
200.0	0.00	0.00	200.0	0.0	0.0	0.0	0.00	0.00	
300.0	0.00	0.00	300.0	0.0	0.0	0.0	0.00	0.00	
400.0	0.00	0.00	400.0	0.0	0.0	0.0	0.00	0.00	
500.0	0.00	0.00	500.0	0.0	0.0	0.0	0.00	0.00	
600.0	0.00	0.00	600.0	0.0	0.0	0.0	0.00	0.00	KOP @ 600'
700.0	2.00	223.57	700.0	-1.3	-1.2	-1.1	2.00	2.00	
800.0	4.00	223.57	799.8	-5.1	-4.8	-4.2	2.00	2.00	
900.0	6.00	223.57	899.5	-11.4	-10.8	-9.5	2.00	2.00	
971.1	7.42	223.57	970.1	-17.4	-16.5	-14.5	2.00	2.00	EOB @ Inc. 7.42°
1,000.0	7.42	223.57	998.7	-20.1	-19.1	-16.7	0.00	0.00	
1,100.0	7.42	223.57	1,097.9	-29.5	-28.0	-24.5	0.00	0.00	
1,200.0	7.42	223.57	1,197.0	-38.8	-36.9	-32.3	0.00	0.00	
1,300.0	7.42	223.57	1,296.2	-48.2	-45.8	-40.1	0.00	0.00	
1,400.0	7.42	223.57	1,395.4	-57.5	-54.7	-47.9	0.00	0.00	
1,500.0	7.42	223.57	1,494.5	-66.9	-63.6	-55.7	0.00	0.00	
1,600.0	7.42	223.57	1,593.7	-76.3	-72.5	-63.5	0.00	0.00	
1,700.0	7.42	223.57	1,692.9	-85.6	-81.4	-71.3	0.00	0.00	
1,800.0	7.42	223.57	1,792.0	-95.0	-90.4	-79.1	0.00	0.00	
1,900.0	7.42	223.57	1,891.2	-104.3	-99.3	-86.9	0.00	0.00	
2,000.0	7.42	223.57	1,990.3	-113.7	-108.2	-94.7	0.00	0.00	
2,100.0	7.42	223.57	2,089.5	-123.1	-117.1	-102.5	0.00	0.00	
2,200.0	7.42	223.57	2,188.7	-132.4	-126.0	-110.3	0.00	0.00	
2,300.0	7.42	223.57	2,287.8	-141.8	-134.9	-118.1	0.00	0.00	
2,400.0	7.42	223.57	2,387.0	-151.1	-143.8	-125.8	0.00	0.00	
2,500.0	7.42	223.57	2,486.2	-160.5	-152.7	-133.6	0.00	0.00	
2,600.0	7.42	223.57	2,585.3	-169.9	-161.6	-141.4	0.00	0.00	
2,700.0	7.42	223.57	2,684.5	-179.2	-170.5	-149.2	0.00	0.00	
2,800.0	7.42	223.57	2,783.6	-188.6	-179.4	-157.0	0.00	0.00	
2,900.0	7.42	223.57	2,882.8	-197.9	-188.3	-164.8	0.00	0.00	
3,000.0	7.42	223.57	2,982.0	-207.3	-197.2	-172.6	0.00	0.00	
3,100.0	7.42	223.57	3,081.1	-216.7	-206.1	-180.4	0.00	0.00	
3,200.0	7.42	223.57	3,180.3	-226.0	-215.0	-188.2	0.00	0.00	
3,300.0	7.42	223.57	3,279.4	-235.4	-223.9	-196.0	0.00	0.00	
3,400.0	7.42	223.57	3,378.6	-244.7	-232.8	-203.8	0.00	0.00	
3,500.0	7.42	223.57	3,477.8	-254.1	-241.7	-211.6	0.00	0.00	
3,600.0	7.42	223.57	3,576.9	-263.5	-250.6	-219.4	0.00	0.00	
3,700.0	7.42	223.57	3,676.1	-272.8	-259.5	-227.2	0.00	0.00	
3,800.0	7.42	223.57	3,775.3	-282.2	-268.4	-235.0	0.00	0.00	
3,900.0	7.42	223.57	3,874.4	-291.5	-277.3	-242.8	0.00	0.00	
4,000.0	7.42	223.57	3,973.6	-300.9	-286.3	-250.6	0.00	0.00	
4,100.0	7.42	223.57	4,072.7	-310.3	-295.2	-258.3	0.00	0.00	
4,200.0	7.42	223.57	4,171.9	-319.6	-304.1	-266.1	0.00	0.00	
4,300.0	7.42	223.57	4,271.1	-329.0	-313.0	-273.9	0.00	0.00	
4,400.0	7.42	223.57	4,370.2	-338.3	-321.9	-281.7	0.00	0.00	
4,500.0	7.42	223.57	4,469.4	-347.7	-330.8	-289.5	0.00	0.00	
4,600.0	7.42	223.57	4,568.6	-357.1	-339.7	-297.3	0.00	0.00	
4,700.0	7.42	223.57	4,667.7	-366.4	-348.6	-305.1	0.00	0.00	
4,800.0	7.42	223.57	4,766.9	-375.8	-357.5	-312.9	0.00	0.00	
4,900.0	7.42	223.57	4,866.0	-385.1	-366.4	-320.7	0.00	0.00	
5,000.0	7.42	223.57	4,965.2	-394.5	-375.3	-328.5	0.00	0.00	

Cathedral Energy Services

Planning Report

Database:	USA EDM 5000 Multi Users DB	Local Co-ordinate Reference:	Well Seventy Holes T-P-5HNB
Company:	Bonanza Creek Energy Operating Company, LLC	TVD Reference:	KB=15' @ 4546.0ft (Original Well Elev)
Project:	Weld County	MD Reference:	KB=15' @ 4546.0ft (Original Well Elev)
Site:	Seventy Holes 44-5 Pad	North Reference:	True
Well:	Seventy Holes T-P-5HNB	Survey Calculation Method:	Minimum Curvature
Wellbore:	OH		
Design:	Plan #1		

Planned Survey									
Measured Depth (ft)	Inclination (°)	Azimuth (°)	Vertical Depth (ft)	+N/-S (ft)	+E/-W (ft)	Vertical Section (ft)	Dogleg Rate (°/100ft)	Build Rate (°/100ft)	Comments / Formations
5,100.0	7.42	223.57	5,064.4	-403.9	-384.2	-336.3	0.00	0.00	
5,200.0	7.42	223.57	5,163.5	-413.2	-393.1	-344.1	0.00	0.00	
5,300.0	7.42	223.57	5,262.7	-422.6	-402.0	-351.9	0.00	0.00	
5,400.0	7.42	223.57	5,361.8	-431.9	-410.9	-359.7	0.00	0.00	
5,500.0	7.42	223.57	5,461.0	-441.3	-419.8	-367.5	0.00	0.00	
5,600.0	7.42	223.57	5,560.2	-450.7	-428.7	-375.3	0.00	0.00	
5,700.0	7.42	223.57	5,659.3	-460.0	-437.6	-383.0	0.00	0.00	
5,753.3	7.42	223.57	5,712.2	-465.0	-442.4	-387.2	0.00	0.00	Start 11° Build/Turn
5,800.0	5.39	267.42	5,758.6	-467.3	-446.6	-388.8	11.00	-4.36	
5,850.0	7.71	313.03	5,808.3	-465.1	-451.4	-385.8	11.00	4.64	
5,900.0	12.25	331.46	5,857.6	-458.2	-456.4	-378.2	11.00	9.09	
5,950.0	17.35	339.63	5,905.9	-446.5	-461.6	-365.8	11.00	10.20	
6,000.0	22.64	344.13	5,952.9	-430.2	-466.8	-348.9	11.00	10.57	
6,050.0	28.00	346.98	5,998.0	-409.5	-472.1	-327.6	11.00	10.73	
6,100.0	33.41	348.98	6,041.0	-384.6	-477.4	-302.2	11.00	10.81	
6,150.0	38.84	350.47	6,081.4	-355.6	-482.6	-272.7	11.00	10.86	
6,200.0	44.28	351.65	6,118.8	-322.8	-487.7	-239.5	11.00	10.89	
6,250.0	49.74	352.62	6,152.9	-286.6	-492.7	-203.0	11.00	10.91	
6,300.0	55.20	353.44	6,183.3	-247.3	-497.5	-163.4	11.00	10.92	
6,350.0	60.66	354.16	6,209.9	-205.1	-502.1	-121.1	11.00	10.93	
6,400.0	66.13	354.81	6,232.2	-160.7	-506.4	-76.5	11.00	10.94	
6,450.0	71.61	355.40	6,250.3	-114.2	-510.3	-30.0	11.00	10.94	
6,500.0	77.08	355.96	6,263.8	-66.2	-514.0	17.9	11.00	10.95	
6,550.0	82.55	356.49	6,272.6	-17.1	-517.2	66.9	11.00	10.95	
6,600.0	88.03	357.01	6,276.7	32.6	-520.0	116.4	11.00	10.95	
6,617.9	89.99	357.20	6,277.0	50.5	-520.9	134.2	11.00	10.95	LP @ 6277' TVD, 90° - Niobrara B target
6,700.0	90.00	357.20	6,277.0	132.5	-524.9	215.8	0.01	0.01	
6,718.0	90.00	357.20	6,277.0	150.4	-525.8	233.6	0.00	0.00	7" - 625' FSL, 1,319' FEL
6,800.0	90.00	357.20	6,277.0	232.3	-529.8	315.1	0.00	0.00	
6,900.0	90.00	357.20	6,277.0	332.2	-534.7	414.5	0.00	0.00	
7,000.0	90.00	357.20	6,277.0	432.1	-539.6	513.8	0.00	0.00	
7,100.0	90.00	357.20	6,277.0	532.0	-544.5	613.2	0.00	0.00	
7,200.0	90.00	357.20	6,277.0	631.9	-549.4	712.5	0.00	0.00	
7,300.0	90.00	357.20	6,277.0	731.8	-554.3	811.9	0.00	0.00	
7,400.0	90.00	357.20	6,277.0	831.6	-559.2	911.2	0.00	0.00	
7,500.0	90.00	357.20	6,277.0	931.5	-564.0	1,010.6	0.00	0.00	
7,600.0	90.00	357.20	6,277.0	1,031.4	-568.9	1,109.9	0.00	0.00	
7,700.0	90.00	357.20	6,277.0	1,131.3	-573.8	1,209.3	0.00	0.00	
7,800.0	90.00	357.20	6,277.0	1,231.2	-578.7	1,308.6	0.00	0.00	
7,900.0	90.00	357.20	6,277.0	1,331.0	-583.6	1,408.0	0.00	0.00	
8,000.0	90.00	357.20	6,277.0	1,430.9	-588.5	1,507.3	0.00	0.00	
8,100.0	90.00	357.20	6,277.0	1,530.8	-593.4	1,606.7	0.00	0.00	
8,200.0	90.00	357.20	6,277.0	1,630.7	-598.3	1,706.1	0.00	0.00	
8,300.0	90.00	357.20	6,277.0	1,730.6	-603.1	1,805.4	0.00	0.00	
8,400.0	90.00	357.20	6,277.0	1,830.4	-608.0	1,904.8	0.00	0.00	
8,500.0	90.00	357.20	6,277.0	1,930.3	-612.9	2,004.1	0.00	0.00	
8,600.0	90.00	357.20	6,277.0	2,030.2	-617.8	2,103.5	0.00	0.00	
8,700.0	90.00	357.20	6,277.0	2,130.1	-622.7	2,202.8	0.00	0.00	
8,800.0	90.00	357.20	6,277.0	2,230.0	-627.6	2,302.2	0.00	0.00	
8,900.0	90.00	357.20	6,277.0	2,329.8	-632.5	2,401.5	0.00	0.00	
9,000.0	90.00	357.20	6,277.0	2,429.7	-637.4	2,500.9	0.00	0.00	
9,100.0	90.00	357.20	6,277.0	2,529.6	-642.2	2,600.2	0.00	0.00	

Cathedral Energy Services

Planning Report

Database:	USA EDM 5000 Multi Users DB	Local Co-ordinate Reference:	Well Seventy Holes T-P-5HNB
Company:	Bonanza Creek Energy Operating Company, LLC	TVD Reference:	KB=15' @ 4546.0ft (Original Well Elev)
Project:	Weld County	MD Reference:	KB=15' @ 4546.0ft (Original Well Elev)
Site:	Seventy Holes 44-5 Pad	North Reference:	True
Well:	Seventy Holes T-P-5HNB	Survey Calculation Method:	Minimum Curvature
Wellbore:	OH		
Design:	Plan #1		

Planned Survey									
Measured Depth (ft)	Inclination (°)	Azimuth (°)	Vertical Depth (ft)	+N/-S (ft)	+E/-W (ft)	Vertical Section (ft)	Dogleg Rate (°/100ft)	Build Rate (°/100ft)	Comments / Formations
9,200.0	90.00	357.20	6,277.0	2,629.5	-647.1	2,699.6	0.00	0.00	
9,300.0	90.00	357.20	6,277.0	2,729.4	-652.0	2,798.9	0.00	0.00	
9,400.0	90.00	357.20	6,277.0	2,829.2	-656.9	2,898.3	0.00	0.00	
9,500.0	90.00	357.20	6,277.0	2,929.1	-661.8	2,997.6	0.00	0.00	
9,600.0	90.00	357.20	6,277.0	3,029.0	-666.7	3,097.0	0.00	0.00	
9,700.0	90.00	357.20	6,277.0	3,128.9	-671.6	3,196.3	0.00	0.00	
9,800.0	90.00	357.20	6,277.0	3,228.8	-676.5	3,295.7	0.00	0.00	
9,900.0	90.00	357.20	6,277.0	3,328.6	-681.3	3,395.1	0.00	0.00	
10,000.0	90.00	357.20	6,277.0	3,428.5	-686.2	3,494.4	0.00	0.00	
10,100.0	90.00	357.20	6,277.0	3,528.4	-691.1	3,593.8	0.00	0.00	
10,200.0	90.00	357.20	6,277.0	3,628.3	-696.0	3,693.1	0.00	0.00	
10,300.0	90.00	357.20	6,277.0	3,728.2	-700.9	3,792.5	0.00	0.00	
10,400.0	90.00	357.20	6,277.0	3,828.0	-705.8	3,891.8	0.00	0.00	
10,500.0	90.00	357.20	6,277.0	3,927.9	-710.7	3,991.2	0.00	0.00	
10,600.0	90.00	357.20	6,277.0	4,027.8	-715.6	4,090.5	0.00	0.00	
10,700.0	90.00	357.20	6,277.0	4,127.7	-720.5	4,189.9	0.00	0.00	
10,800.0	90.00	357.20	6,277.0	4,227.6	-725.3	4,289.2	0.00	0.00	
10,900.0	90.00	357.20	6,277.0	4,327.4	-730.2	4,388.6	0.00	0.00	
11,000.0	90.00	357.20	6,277.0	4,427.3	-735.1	4,487.9	0.00	0.00	
11,071.8	90.00	357.20	6,277.0	4,499.0	-738.6	4,559.3	0.00	0.00	TD @ 11,071.8' MD

Targets									
Target Name	- hit/miss target	Dip Angle (°)	Dip Dir. (°)	TVD (ft)	+N/-S (ft)	+E/-W (ft)	Northing (ft)	Easting (ft)	Latitude Longitude
Seventy Holes T-P-5HNI	- plan hits target center	0.00	0.00	6,277.0	4,499.0	-738.6	1,371,601.38	3,321,769.14	40.347690 -104.345560
Seventy Holes T-P-5HNI	- plan hits target center	0.00	0.00	6,277.0	58.3	-521.3	1,367,163.86	3,322,044.38	40.335500 -104.344780

Casing Points				
Measured Depth (ft)	Vertical Depth (ft)	Name	Casing Diameter (in)	Hole Diameter (in)
6,718.0	6,277.0	7" - 625' FSL, 1,319' FEL		

Formations				
Measured Depth (ft)	Vertical Depth (ft)	Name	Lithology	Dip (°) Dip Direction (°)
6,617.9	6,277.0	Niobrara B target		0.00

Cathedral Energy Services

Planning Report

Database:	USA EDM 5000 Multi Users DB	Local Co-ordinate Reference:	Well Seventy Holes T-P-5HNB
Company:	Bonanza Creek Energy Operating Company, LLC	TVD Reference:	KB=15' @ 4546.0ft (Original Well Elev)
Project:	Weld County	MD Reference:	KB=15' @ 4546.0ft (Original Well Elev)
Site:	Seventy Holes 44-5 Pad	North Reference:	True
Well:	Seventy Holes T-P-5HNB	Survey Calculation Method:	Minimum Curvature
Wellbore:	OH		
Design:	Plan #1		

Plan Annotations				
Measured Depth (ft)	Vertical Depth (ft)	Local Coordinates		Comment
		+N/-S (ft)	+E/-W (ft)	
600.0	600.0	0.0	0.0	KOP @ 600'
971.1	970.1	-17.4	-16.5	EOB @ Inc. 7.42°
5,753.3	5,712.2	-465.0	-442.4	Start 11° Build/Turn
6,618.0	6,277.0	50.6	-520.9	LP @ 6277' TVD, 90°
11,071.8	6,277.0	4,499.0	-738.6	TD @ 11,071.8' MD

Bonanza Creek Energy Operating Company, LLC

Weld County

Seventy Holes 44-5 Pad

Seventy Holes T-P-5HNB

OH

Plan #1

Anticollision Report

12 February, 2013

Cathedral Energy Services

Anticollision Report

Company:	Bonanza Creek Energy Operating Company, LLC	Local Co-ordinate Reference:	Well Seventy Holes T-P-5HNB
Project:	Weld County	TVD Reference:	KB=15' @ 4546.0ft (Original Well Elev)
Reference Site:	Seventy Holes 44-5 Pad	MD Reference:	KB=15' @ 4546.0ft (Original Well Elev)
Site Error:	0.0ft	North Reference:	True
Reference Well:	Seventy Holes T-P-5HNB	Survey Calculation Method:	Minimum Curvature
Well Error:	0.0ft	Output errors are at	2.00 sigma
Reference Wellbore	OH	Database:	USA EDM 5000 Multi Users DB
Reference Design:	Plan #1	Offset TVD Reference:	Offset Datum

Reference	Plan #1		
Filter type:	NO GLOBAL FILTER: Using user defined selection & filtering criteria		
Interpolation Method:	MD Interval 100.0ft	Error Model:	Systematic Ellipse
Depth Range:	Unlimited	Scan Method:	Closest Approach 3D
Results Limited by:	Maximum center-center distance of 500.0ft	Error Surface:	Elliptical Conic
Warning Levels Evaluated at:	2.00 Sigma		

Survey Tool Program		Date	2/12/2013		
From (ft)	To (ft)	Survey (Wellbore)	Tool Name	Description	
0.0	11,071.8	Plan #1 (OH)	MWD	Geolink MWD	

Summary						
Site Name	Reference	Offset	Distance		Separation	Warning
	Measured	Measured	Between	Between		
	Depth	Depth	Centres	Ellipses		
Offset Well - Wellbore - Design	(ft)	(ft)	(ft)	(ft)	Factor	
Seventy Holes 24-5 Pad						
Seventy Holes 33-5 - OH - OH						Out of range
Seventy Holes 34-5 - OH - OH						Out of range

Cathedral Energy Services

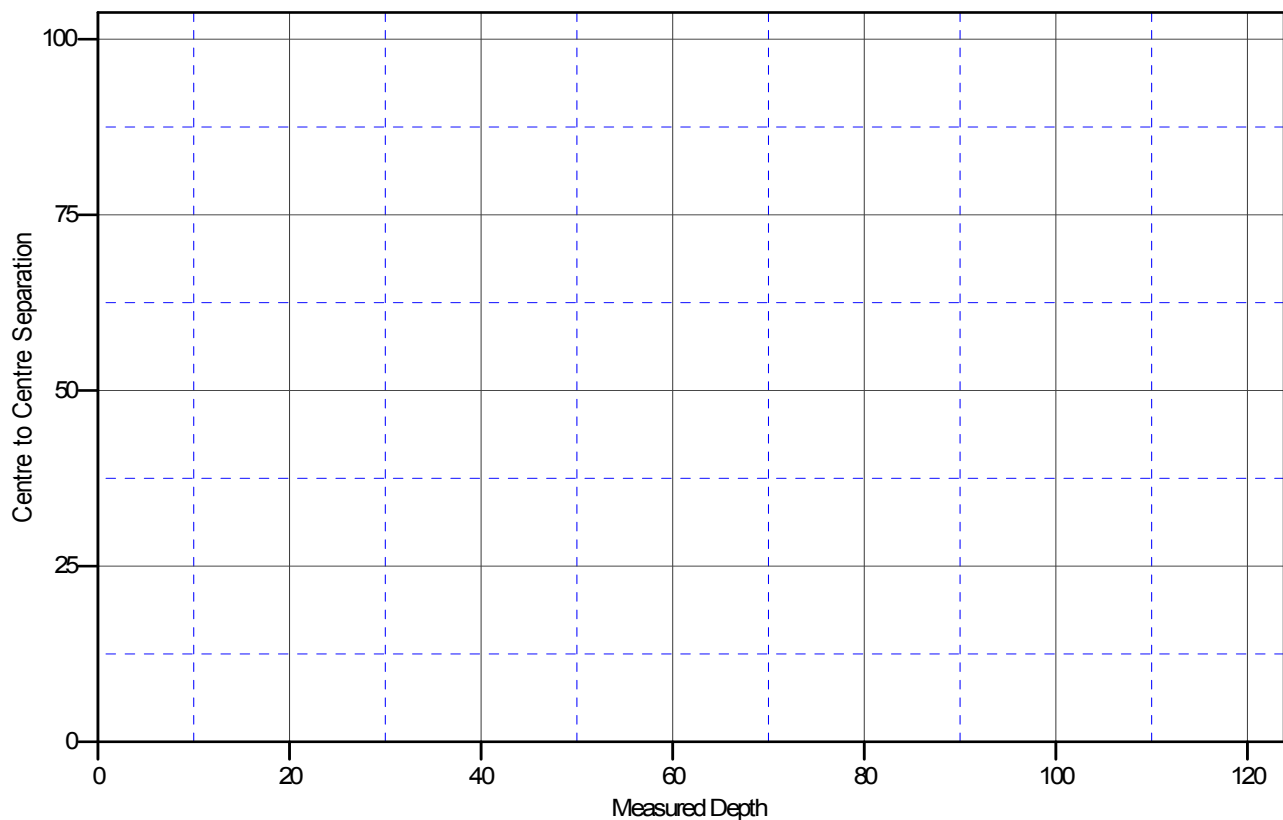
Anticollision Report

Company:	Bonanza Creek Energy Operating Company, LLC	Local Co-ordinate Reference:	Well Seventy Holes T-P-5HNB
Project:	Weld County	TVD Reference:	KB=15' @ 4546.0ft (Original Well Elev)
Reference Site:	Seventy Holes 44-5 Pad	MD Reference:	KB=15' @ 4546.0ft (Original Well Elev)
Site Error:	0.0ft	North Reference:	True
Reference Well:	Seventy Holes T-P-5HNB	Survey Calculation Method:	Minimum Curvature
Well Error:	0.0ft	Output errors are at	2.00 sigma
Reference Wellbore	OH	Database:	USA EDM 5000 Multi Users DB
Reference Design:	Plan #1	Offset TVD Reference:	Offset Datum

Reference Depths are relative to KB=15' @ 4546.0ft (Original Well Elev)
Offset Depths are relative to Offset Datum
Central Meridian is -105.500000 °

Coordinates are relative to: Seventy Holes T-P-5HNB
Coordinate System is US State Plane 1983, Colorado Northern Zone
Grid Convergence at Surface is: 0.75°

Ladder Plot



LEGEND