



## Exploration and Production Conversion to Injection Procedure

Wellname: DOE 1-W-26  
Location: SENW S26 T6S R95W  
Field: Parachute  
API: 05-045-06583

Prepared By: Mark Graeve  
Office phone: 970.379.5857

Date: 4/19/2013

Surface Casing: 8-5/8" 24# set @ 315-ft  
Production Casing: 4-1/2" 10.5# set @ 3,851-ft  
PBTD: 3,690-ft  
TOC: 2,434-ft  
Tubing: 2 3/8" 4.7# set @ 2,804-ft  
Wasatch Completions: 2,666-2,728-ft  
Correlate Log: AWS CBL dated 3/22/1990

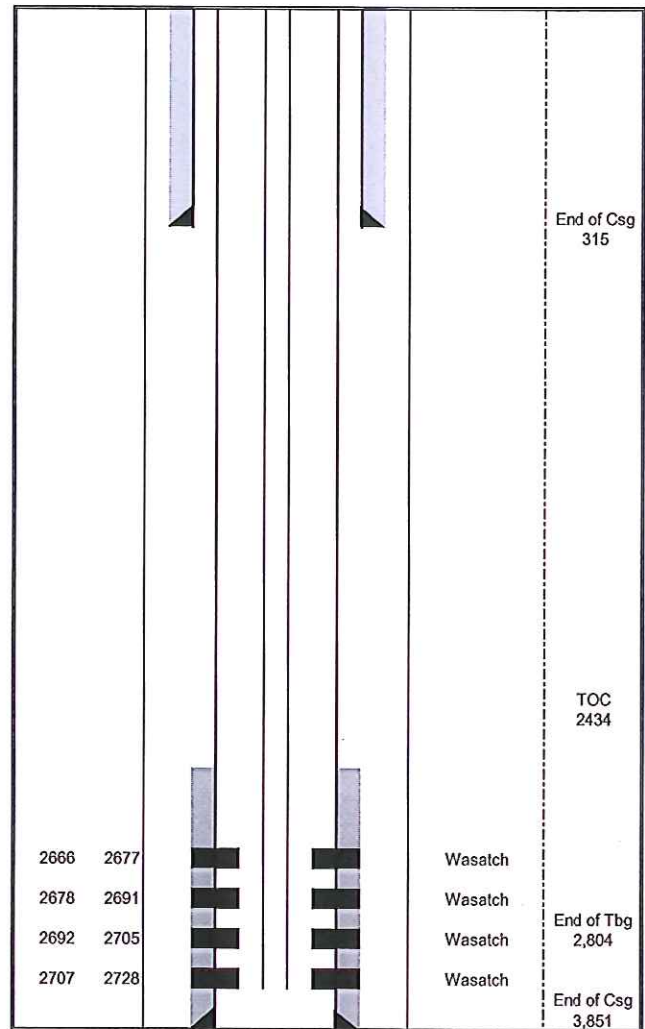
Purpose: Convert To Injection

### Proposed Procedure:

- 1) MIRU pulling unit, NU and P-Test BOPs, ensure all tanks are clean and water filtered to 10 micron
- 2) RIH to Tag fill
- 3) Clean out any sand fill to PBTD or Hard Tag
- 4) Land 2 7/8" Flush joint tubing and set packer at 2,600'
- 5) MIT the Casing in front of BLM and COGCC to 1,000 psi
- 6) Submit required paper work to State and BLM

**Current DOE 1-W-26 Wellbore Diagram**

Well	Pad	API
DOE 1-W-26	DOE 1-W-26 Pad	05-045-06583
EU	First Sales	Spud Date
62058393	3/1/1990	9/7/1989
Bottom Surf Csg	Bottom Prod Csg	TOC
315	3,851	2,434
Top Perf	Bottom Perf	Current EOT
2,666	2,728	2,804



***Proposed DOE 1-W-26 Wellbore Diagram***

Well	Pad	API
DOE 1-W-26	DOE 1-W-26 Pad	05-045-06583
EU	First Sales	Spud Date
62058393	3/1/1990	9/7/1989
Bottom Surf Csg	Bottom Prod Csg	TOC
315	3,851	2,434
Top Perf	Bottom Perf	Packer/ New EOT
2,666	2,728	2,600

