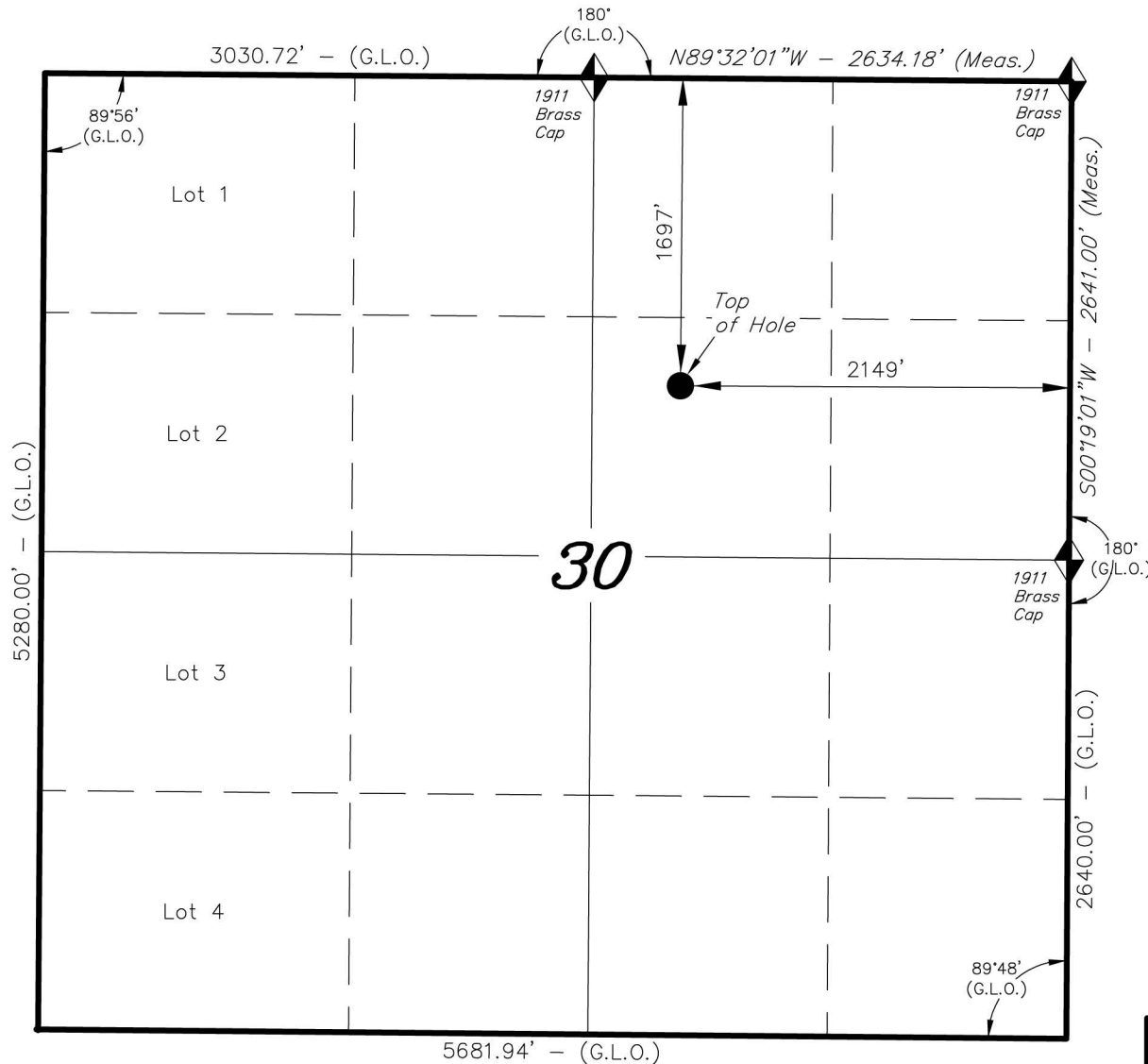
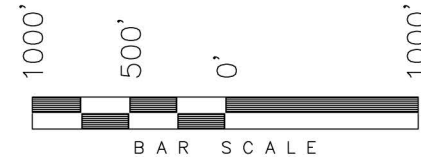


**T8S, R91W, 6th P.M.**

**ENCANA OIL & GAS (USA) INC**



WELL LOCATION, GHG 30-7-2 (NGG30NE), LOCATED AS SHOWN IN THE SW 1/4 NE 1/4 OF SECTION 30, T8S, R91W, 6th P.M. MESA COUNTY, COLORADO.



**NOTES:**

1. Well footages are measured at right angles to the Section Lines.
2. Bearings are based on Global Positioning Satellite observations.
3. G.P.S. Operator: C.D. Slauch, (PDOP) = 3.2

**WELL LOCATION:**  
**GHG 30-7-2 (NGG30NE)**

ELEV. UNGRADED GROUND = 7247.1'

THIS IS TO CERTIFY THAT THE ABOVE PLAT WAS PREPARED FROM FIELD NOTES AND SURVEYS MADE BY ME OR UNDER MY SUPERVISION. THE LOCATION HAS BEEN STAKED ON THE GROUND AS SHOWN ON THE PLAT, AND THAT THE SAID NOTES AND PLAT ARE TRUE AND CORRECT TO THE BEST OF MY KNOWLEDGE AND BELIEF.

*[Signature]*  
REGISTERED LAND SURVEYOR  
REGISTRATION NO. 30125  
STATE OF COLORADO  
# 30125

◆ = SECTION CORNERS LOCATED

Basis of elevation is the Rifle 2 Triangulation Station. 39°31'53.80" N Lat. & 107°47'07.78" W Long. (NAD 83). Elevation = 5323.1' (NAVD88).

NAD 83 (SURFACE HOLE LOCATION)	
LATITUDE	= 39°20'02.20" (39.333944°)
LONGITUDE	= 107°35'37.12" (107.593644°)

**TRI STATE LAND SURVEYING & CONSULTING**

180 NORTH VERNAL AVE. - VERNAL, UTAH 84078  
(435) 781-2501

DATE SURVEYED: 10-06-11	SURVEYED BY: C.D.S	SHEET <b>2</b> OF 8
DATE DRAWN: 03-07-13	DRAWN BY: M.W.	
REVISED: 04-26-13 M.W.	SCALE: 1" = 1000'	