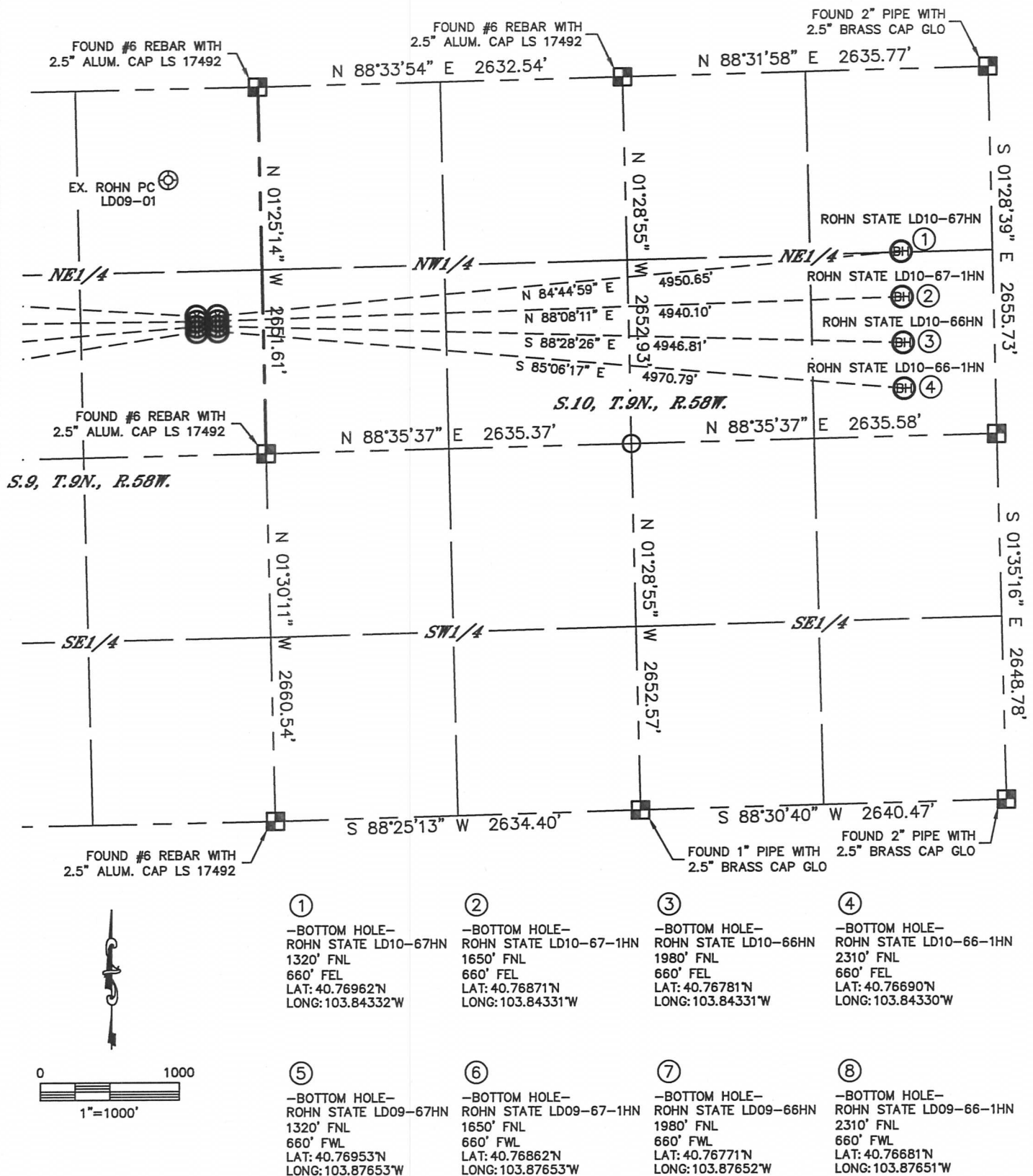


ROHN STATE LD10-67HN PAD,
ROHN STATE LD09-67HN PAD

THIS MAP DOES NOT REPRESENT A BOUNDARY SURVEY

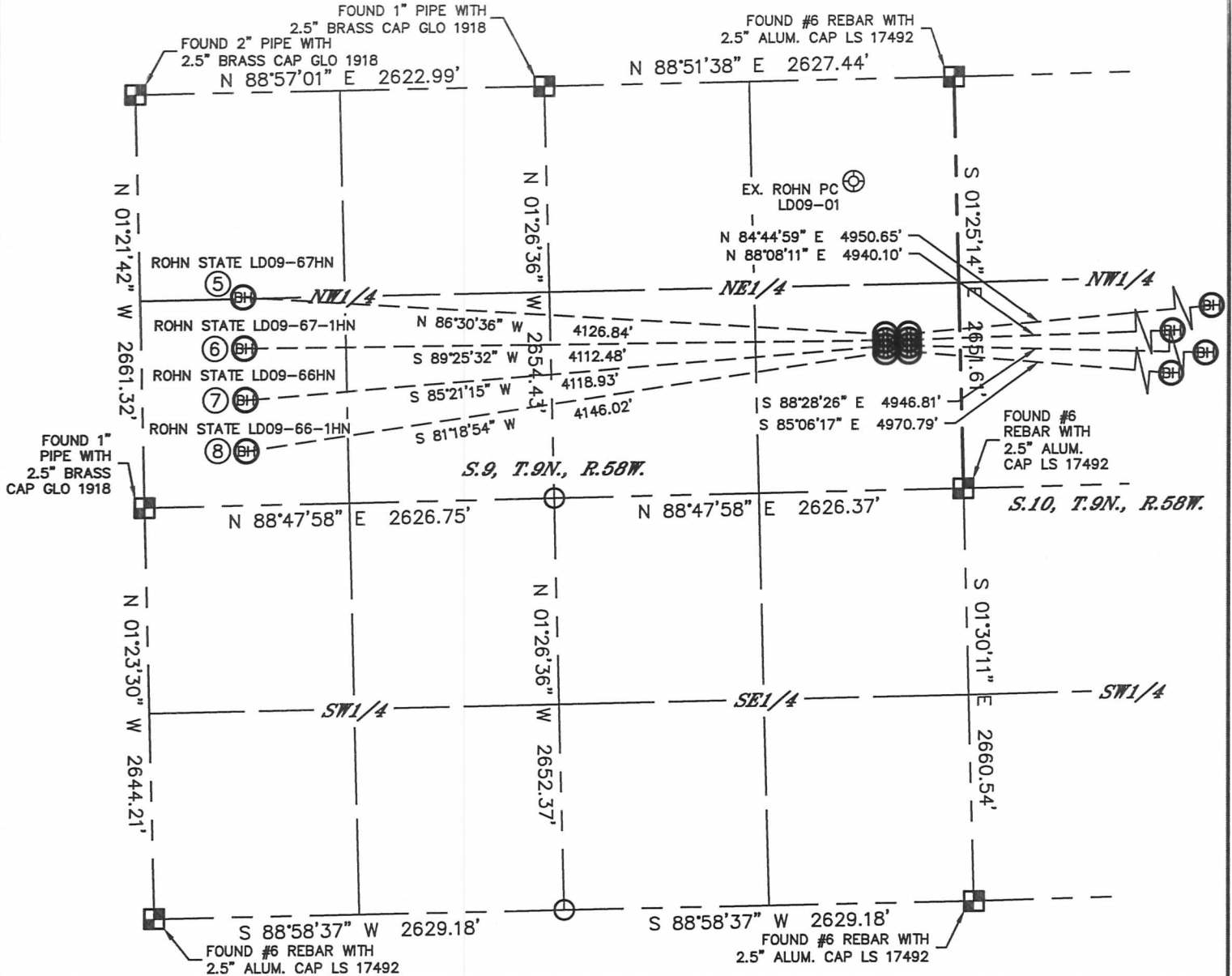


MULTI-WELL PLAN

ROHN STATE LD10-67HN PAD,
ROHN STATE LD09-67HN PAD

SECTION: 9
TOWNSHIP: 9N
RANGE: 58W

THIS MAP DOES NOT REPRESENT A BOUNDARY SURVEY



①

-BOTTOM HOLE-
ROHN STATE LD10-67HN
1320' FNL
660' FEL
LAT: 40.76962°N
LONG: 103.84332°W

②

-BOTTOM HOLE-
ROHN STATE LD10-67-1HN
1650' FNL
660' FEL
LAT: 40.76871°N
LONG: 103.84331°W

③

-BOTTOM HOLE-
ROHN STATE LD10-66HN
1980' FNL
660' FEL
LAT: 40.76781°N
LONG: 103.84331°W

④

-BOTTOM HOLE-
ROHN STATE LD10-66-1HN
2310' FNL
660' FEL
LAT: 40.76690°N
LONG: 103.84330°W

⑤

-BOTTOM HOLE-
ROHN STATE LD09-67HN
1320' FNL
660' FNL
LAT: 40.76953°N
LONG: 103.87653°W

⑥

-BOTTOM HOLE-
ROHN STATE LD09-67-1HN
1650' FNL
660' FNL
LAT: 40.76862°N
LONG: 103.87653°W

⑦

-BOTTOM HOLE-
ROHN STATE LD09-66HN
1980' FNL
660' FNL
LAT: 40.76771°N
LONG: 103.87652°W

⑧

-BOTTOM HOLE-
ROHN STATE LD09-66-1HN
2310' FNL
660' FNL
LAT: 40.76681°N
LONG: 103.87651°W

LEGEND

- = ALIQUOT MONUMENT AS DESCRIBED
- = CALCULATED POSITION

SHEET 2 OF 2

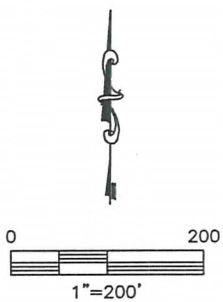
DATE: rev 3/14/13
PROJECT#: 2012159

Lat40°, Inc. 1635 Foxtrail Drive, Suite 325 Loveland, CO 970-776-3321

MULTI-WELL PLAN

ROHN STATE LD10-67HN PAD,
ROHN STATE LD09-67HN PAD

SECTION: 9
TOWNSHIP: 9N
RANGE: 58W



DATE: rev 3/14/13
PROJECT#: 2012159