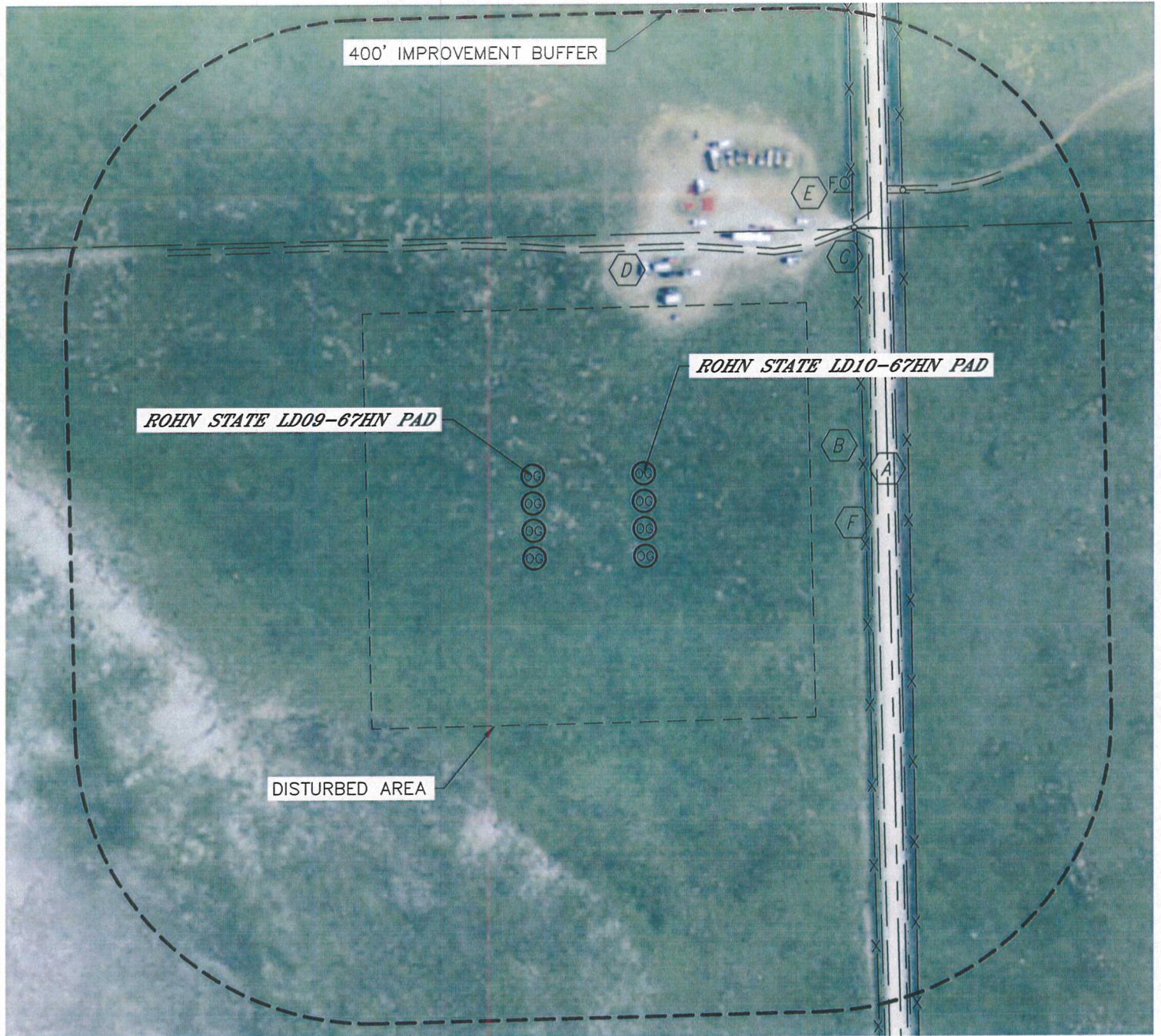


## LOCATION DRAWING

ROHN STATE LD10-67HN PAD,  
ROHN STATE LD09-67HN PAD

SECTION: 9  
TOWNSHIP: 9N  
RANGE: 58W



### IMPROVEMENTS:

(MEASURED FROM THE PROPOSED ROHN STATE LD10-67HN WELL LOCATION)

- A** COUNTY ROAD 127 315' E
- B** FENCE 298' & 358' E
- C** GATE 437' & 519' NE
- D** FIELD ROAD 301' N, 504' NE
- E** FIBER OPTIC MARKER 454' NE

- F** BARROW DITCH 308' & 343' E

NEAREST: BUILDING 5280'+, PUBLIC ROAD 315' E (CR 127),  
ABOVE GROUND UTILITY 1095' NE, RAILROAD 5280'+, PROPERTY LINE 330' E

DATE: rev 3/14/13  
PROJECT#: 2012159