

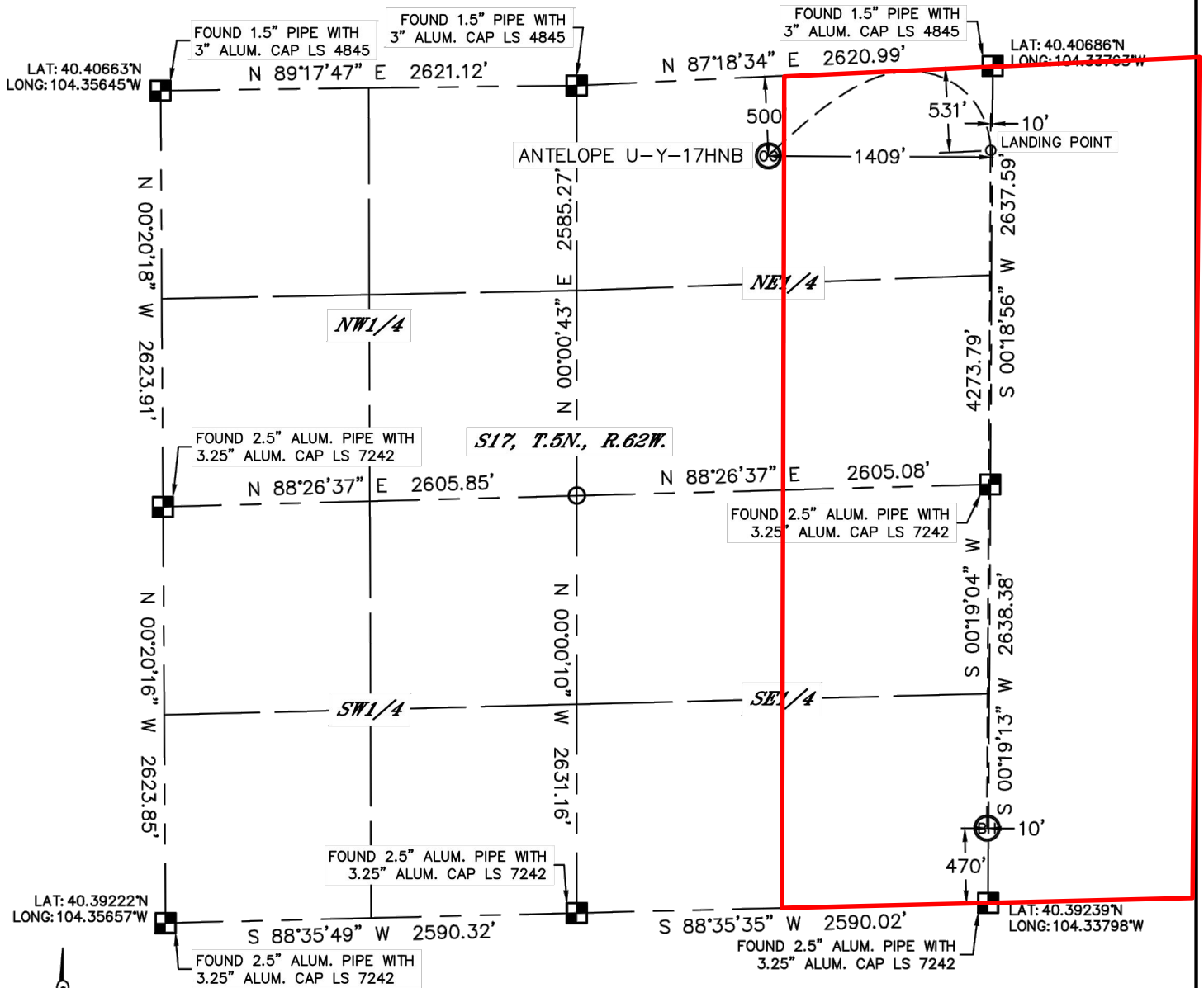


Lat40°, Inc. 1635 Foxtrail Drive, Suite 325 Loveland, CO 970-776-3321

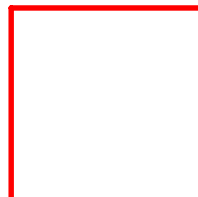
WELL LOCATION CERTIFICATE

SECTION: 17
TOWNSHIP: 5N
RANGE: 62W

THIS MAP DOES NOT REPRESENT A BOUNDARY SURVEY



In accordance with a request from Keith Caplan with BONANZA CREEK ENERGY, INC.
Lat40°, Inc. has determined the surface location of the ANTELOPE U-Y-17HNB to be 500' from the NORTH
line and 1409' from the EAST line and the bottom hole to be 470' from the SOUTH line and 10' from the



Wellbore Spacing Unit Outline



Wellbore Spacing Unit Map

22 April 2013 ksc

Antelope U-Y-17HNB
E/2E/2 Sec. 17 T5N R62W 6th PM
W/2W/2 Sec. 16 T5N R62W 6th PM
Weld County, Colorado