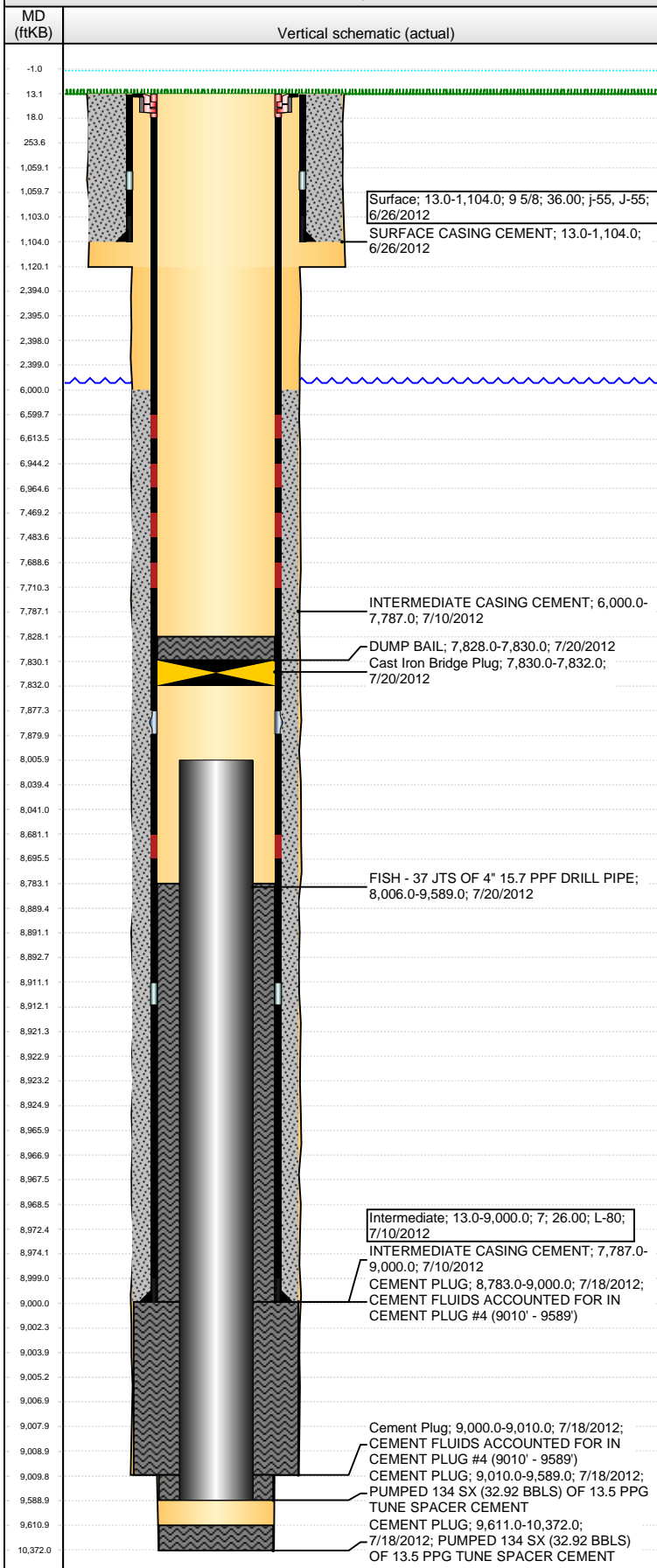


Well Name: CON GQ07-01

DEVIATED - ORIGINAL HOLE, 5/10/2013 8:50:05 AM



Well Header

API	Business Unit	District	Well Config
05-123-35654	WATTENBERG	25	DEVIATED
Original KB Elevation (ft)	KB - GL / MSL (ftKB)	Spud Date	P & A Date
5,091.00	13.00	6/26/2012	

Comment

STAGE TOOL @ 7877'
DRILLED & ABANDONED - DRY HOLE
DRILL PIPE STUCK IN WELLBORE - TOP OF FISH @ 8006'

Directions To Well

CR 120 & CR 87, SOUTH 1/10TH, WEST 1/10TH INTO LOCATION

Congressional Location

Quarter 1	Quarter 2	Quarter 3	Quarter 4	Section	Township	Twnshp N...	Range	Rng E/W Dir
		NE	NE	7	10	N	61	W

Bottom Hole Location

North-South Distance (ft)	From N or S Line	East-West Distance (ft)	From E or W Line

Plug Back Total Depths

Date	Depth (ftKB)	Method	Com

Wellbore Sections

Section Des	Size (in)	Act Top (ftKB)	Act Btm (ftKB)
SURFACE	13 1/2	13.0	1,120.0
INTERMEDIATE	8 3/4	1,120.0	9,010.0
BASEMENT	6 1/8	9,010.0	10,372.0

Zone Statuses

Zone Name	Status Date	Status	Job

Casing Strings

Surface, 1,104.0ftKB

Casing Description	Run Date	OD (in)	Wt/Len (l...)	Grade	Top (ftKB)	MD (ftKB)
Surface	6/26/2012	9 5/8	36.00	J-55	13.0	1,104.0

Intermediate, 9,000.0ftKB

Casing Description	Run Date	OD (in)	Wt/Len (l...)	Grade	Top (ftKB)	MD (ftKB)
Intermediate	7/10/2012	7	26.00	L-80	13.0	9,000.0

Cement

Description	Top Depth (ftKB)	Bottom Depth (ftKB)
SURFACE CASING CEMENT	13.0	1,104.0
INTERMEDIATE CASING CEMENT	6,000.0	7,787.0
INTERMEDIATE CASING CEMENT	7,787.0	9,000.0
CEMENT PLUG	8,783.0	9,000.0
CEMENT PLUG	9,010.0	9,589.0
CEMENT PLUG	9,611.0	10,372.0
Cement Plug	9,000.0	9,010.0
DUMP BAIL	7,828.0	7,830.0

Tubing Components

Item Des	OD (in)	Wt (lb/ft)	Grade	Jts	Len (ft)	Btm (ftKB)	Btm (TVD) (ftKB)

Perforation Data

Zone	Bnch/St g	Entered Shot Total	Top (ftKB)	Btm (ftKB)	Date

Other In Hole

Run Date	Des	OD (in)	Top (ftKB)	Btm (ftKB)
7/20/2012	Cast Iron Bridge Plug	6.276	7,830.0	7,832.0
7/20/2012	FISH - 37 JTS OF 4" 15.7 PPF DRILL PIPE	4	8,006.0	9,589.0

Logs

Date	Type	Top (ftKB)	Btm (ftKB)
7/9/2012	SONIC SCANNER, IMAGE LOG	1,110.0	8,997.0
7/18/2012	BOREHOLE COMPENSATED SONIC	9,006.0	10,175.0
7/18/2012	CBL/CCL/GR	4,400.0	9,006.0

Well Name: CON GQ07-01

DEVIATED - ORIGINAL HOLE, 5/10/2013 8:50:06 AM

Logs

