

Schlumberger

Company: **Conoco Phillips Company**

Well: **Tebo 32-2**

Field: **Wildcat**

County: **Arapahoe**

State: **Colorado**

Well:	Tebo 32-2
Field:	Wildcat
County:	Arapahoe
State:	Colorado

Field: **Wildcat**
County: **Arapahoe**
State: **Colorado**

County: **Arapahoe** State: **Colorado**

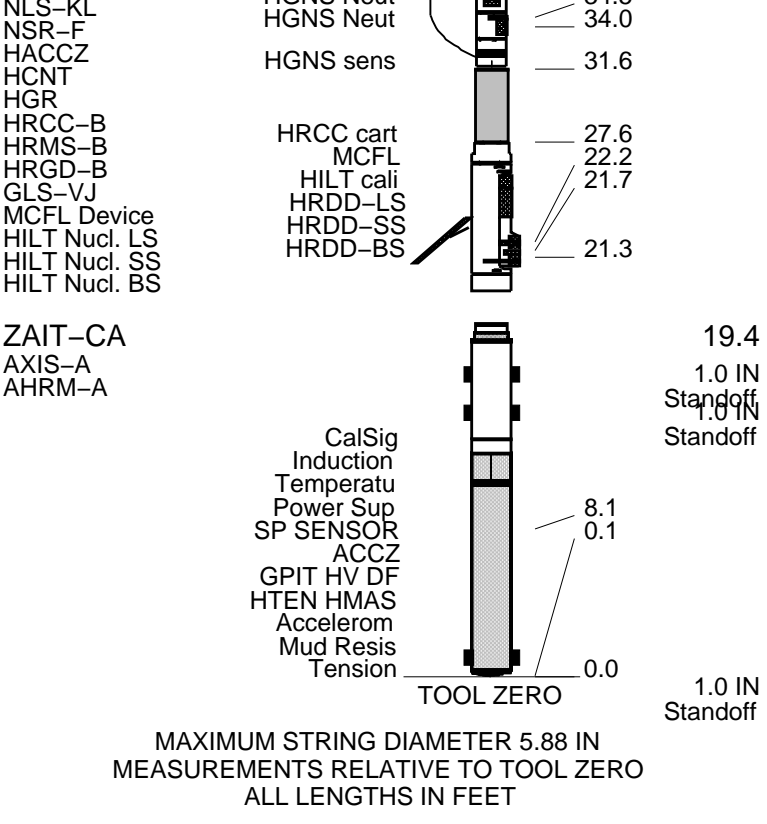
1

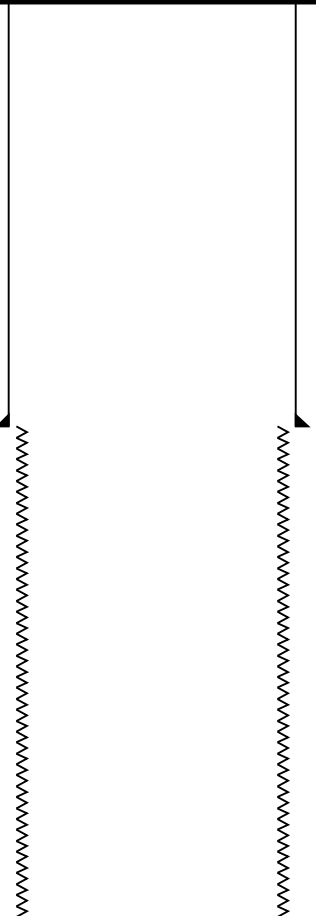
[illegible]

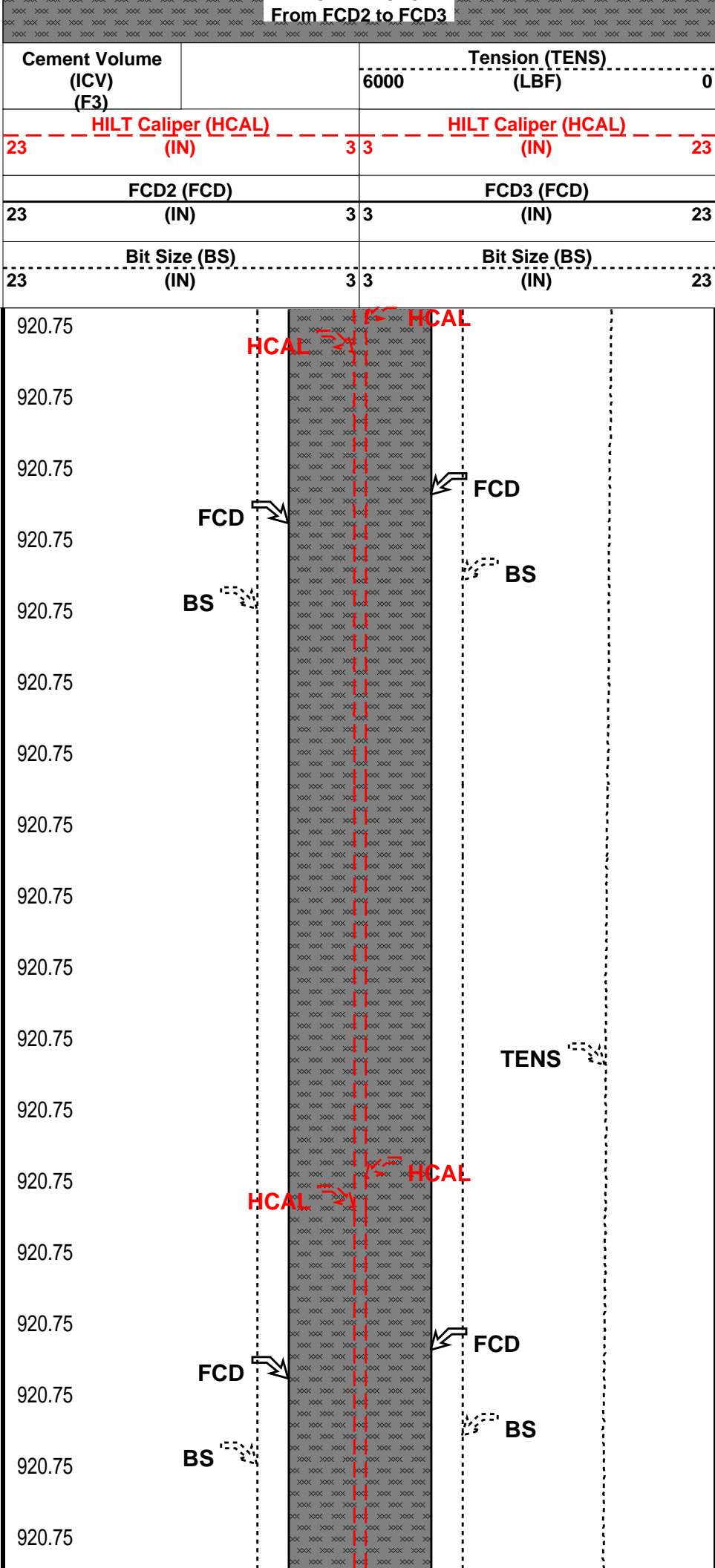
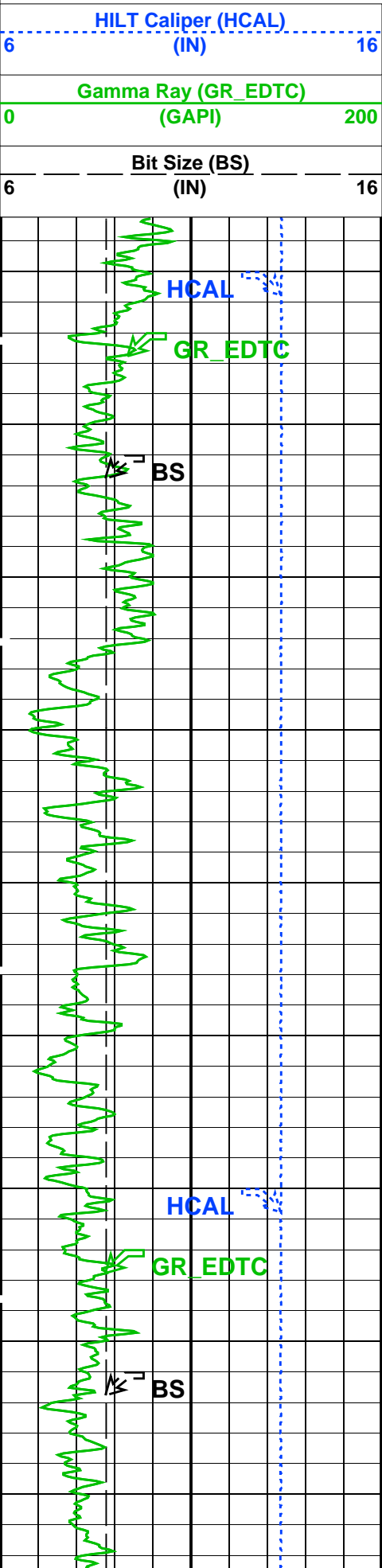
Logging Date					
Run Number					
Depth Driller					
Schlumberger Depth					
Bottom Log Interval					
Top Log Interval					
Casing Driller Size @ Depth		@			
Casing Schlumberger					
Bit Size					
Type Fluid In Hole					
Density		Viscosity			
Fluid Loss		PH			
Source Of Sample					
RM @ Measured Temperature		@			
RMF @ Measured Temperature		@			
RMC @ Measured Temperature		@			
Source RMF	RMF				
RM @ MRT		@		@	
Maximum Recorded Temperatures					
Circulation Stopped		Time			
Logger On Bottom		Time			
Unit Number		Location			
Recorded By					
Witnessed By					

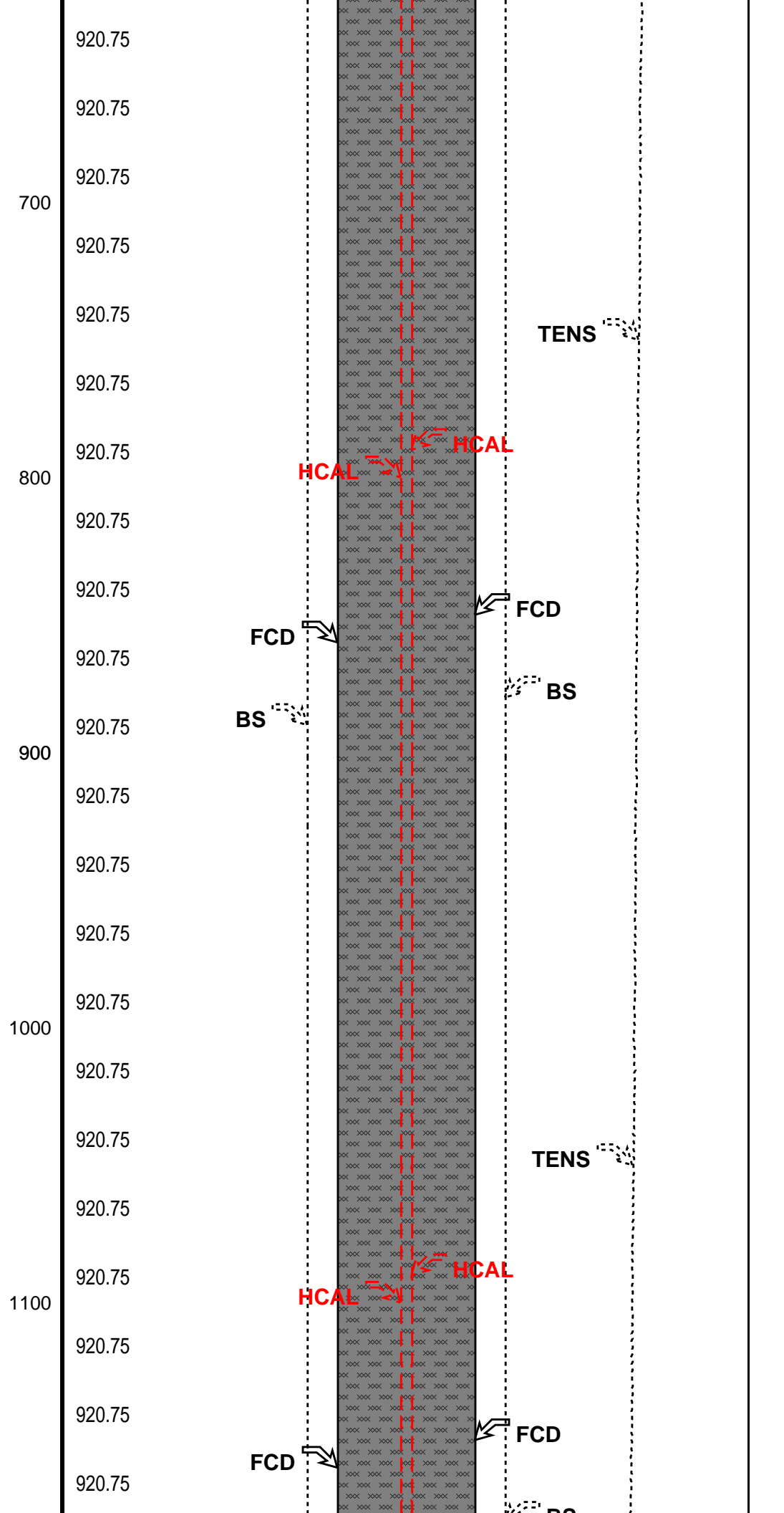
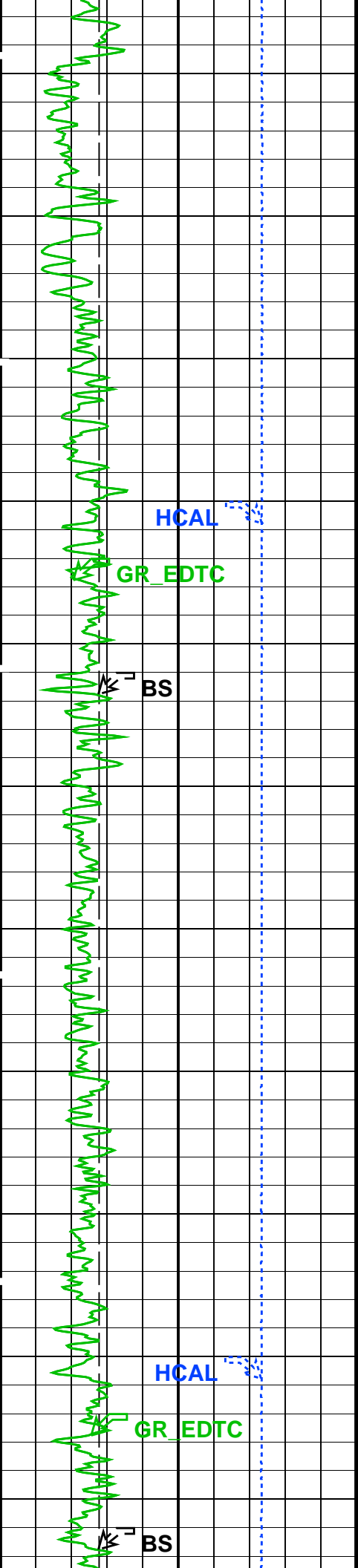
Due to difficulty's acquiring filtrate and mudcake samples, the values were calculated

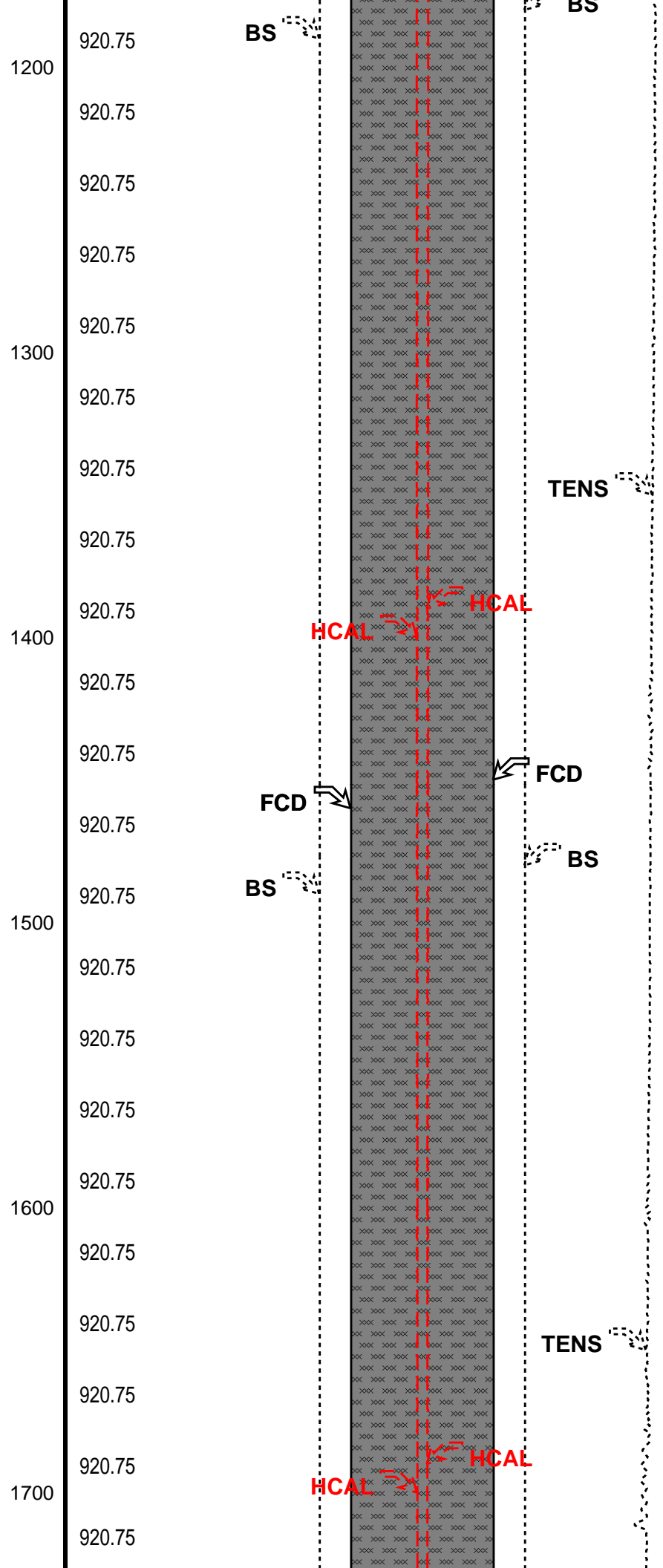
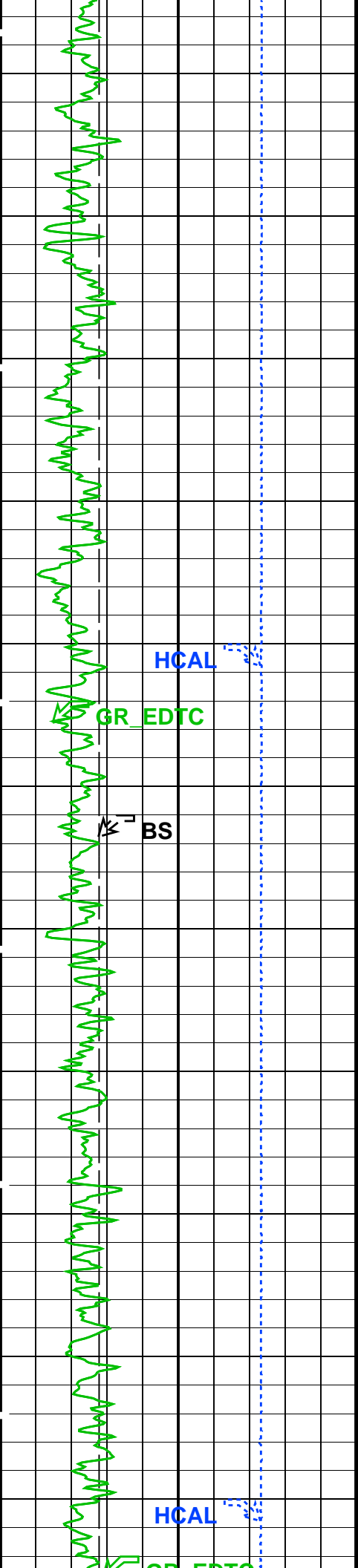
Matrix: Limestone (2.71 g/cc)					
Rig: PD 522					
Crew: Mark Hoffman, Gary Lapp					
RUN 1			RUN 2		
SERVICE ORDER #:		BFN8-00151	SERVICE ORDER #:		
PROGRAM VERSION:		19C0-187	PROGRAM VERSION:		
FLUID LEVEL:		300 ft	FLUID LEVEL:		
LOGGED INTERVAL	START	STOP	LOGGED INTERVAL	START	STOP
EQUIPMENT DESCRIPTION					
RUN 1			RUN 2		
SURFACE EQUIPMENT					
WITM (EDTS)-A					
GSR-U/Y NCT-B CNB-AB NCS-VB					
DOWNHOLE EQUIPMENT					
LEH-QT		84.1			
LEH-QT					
EDTC-B	MDSB_EDTC	81.2			
EDTH-B	Mud Tempe	77.7			
EDTC-B	CTEM	75.9			
EDTG-A/B	Gamma Ray				
	EFTB DIAG				
	TelStatus				
	EDTCB Ele	74.7			
ADT-C		74.7			
ADC-C					
ADS-C					
HECH-KDB	ADT Pad R	65.9			
ADP-C	ADT Cartr	65.8			
F0F1	ADT Pad	65.4			
F2F3	ADT Calip				
ECC-B		63.2			
ECH-A	ECC Statu	61.4			
ECC-B					
ECS-HP		59.7			
ECS-HP	Detector	58.4			
NSR-F					
ECSD-A					
ECSH-HP					
AH-NMA		53.0			
AH-NMA					
GPIT-C		45.0			
GPIC-C					
GPIH-B					
HILTB-FTB	HGNS HTEM	41.0			
HGNSD-B	HMCA	40.3			
HMCA	HGNS Gamm				
HGNH					
	HGNS Neut	34.5			

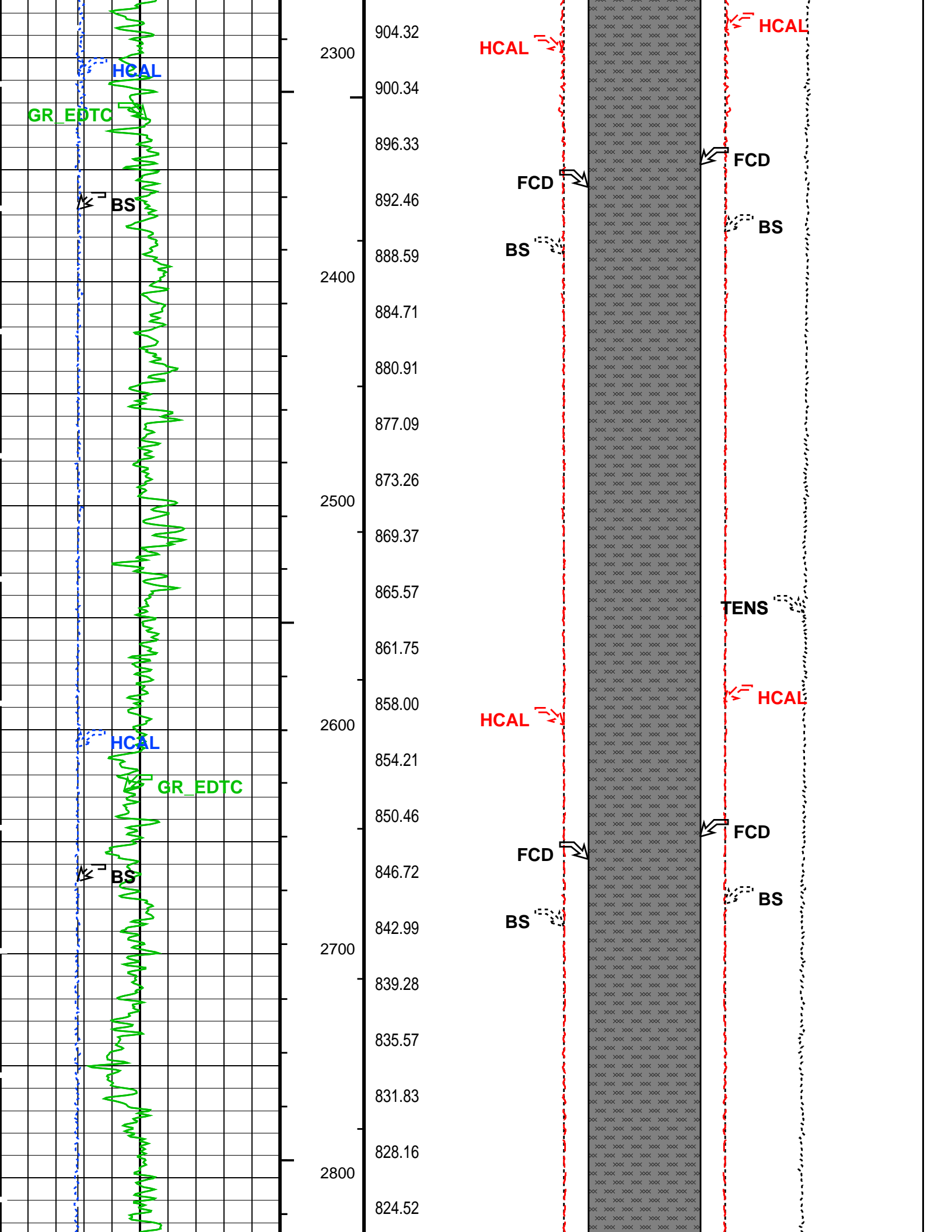


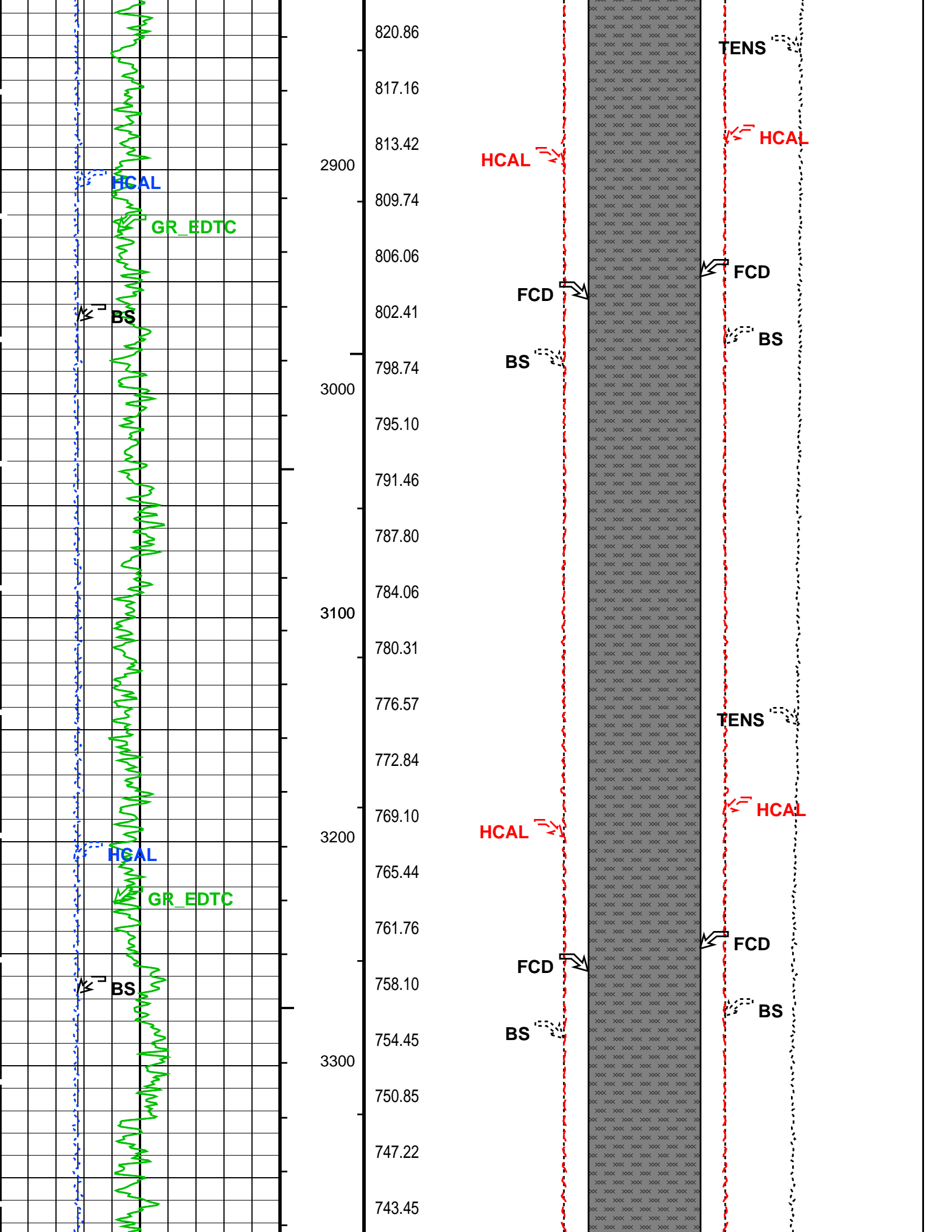
Production String	(in)		(ft)	Well Schematic	(ft)		(in)		Casing String
	OD	ID	MD		MD	OD	ID		
					0.0	9.625		Casing String	
					2188.0	9.625		Casing Shoe	
					2188.0	8.750		Borehole Segment	

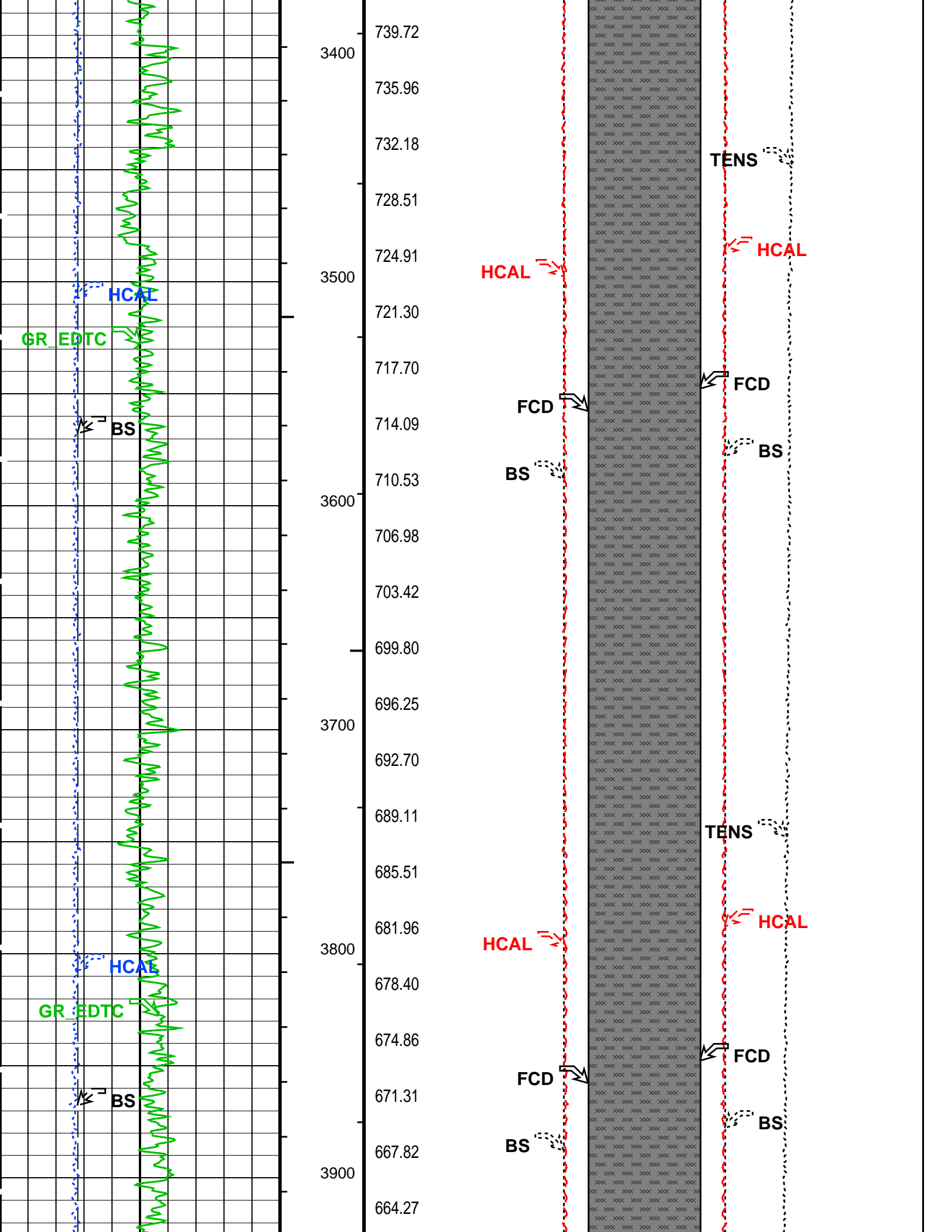


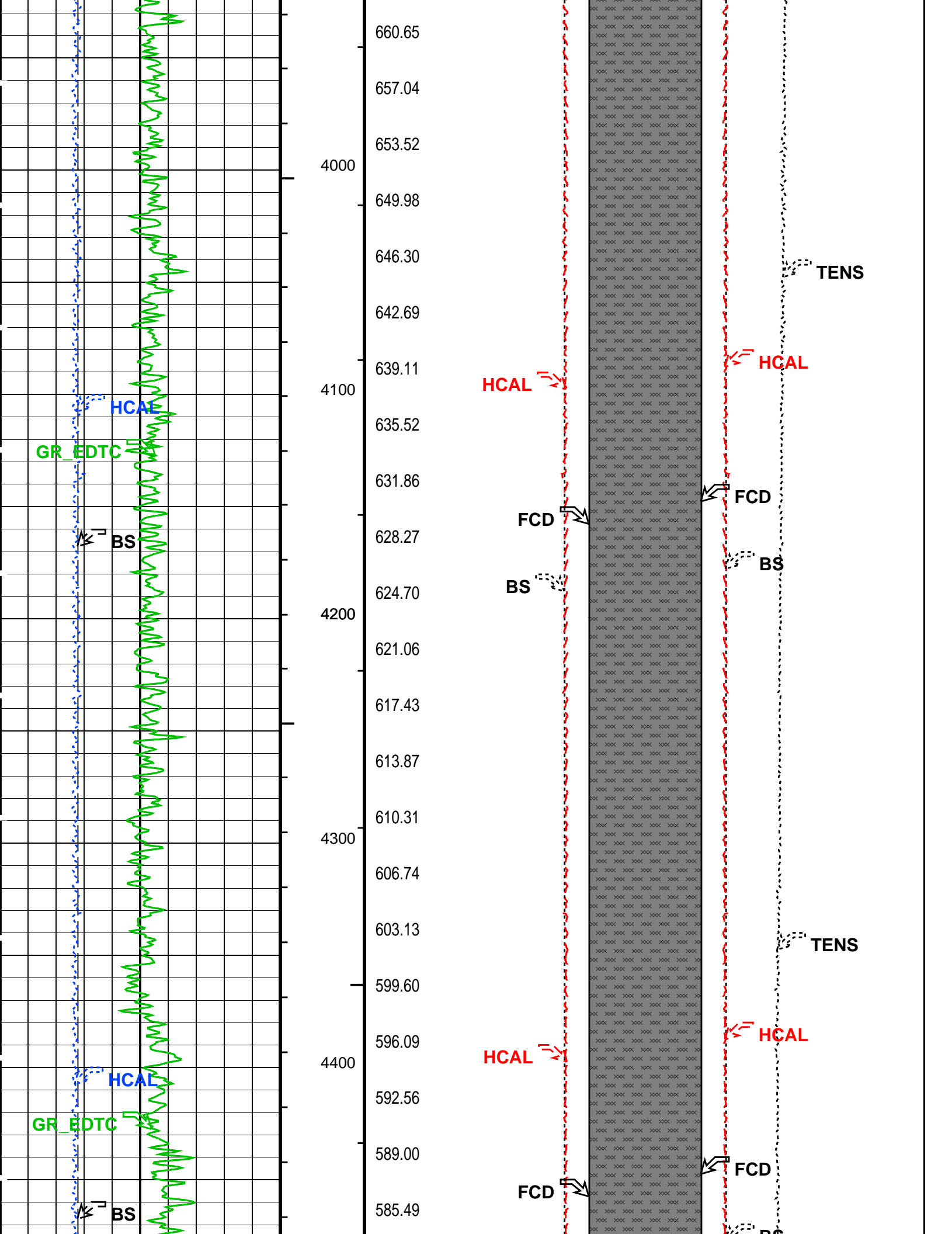


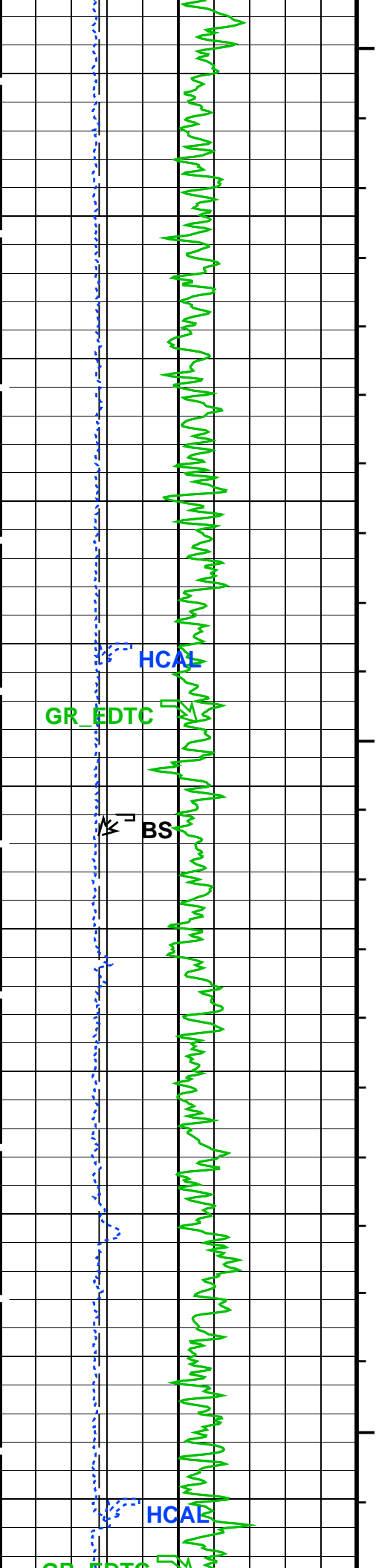




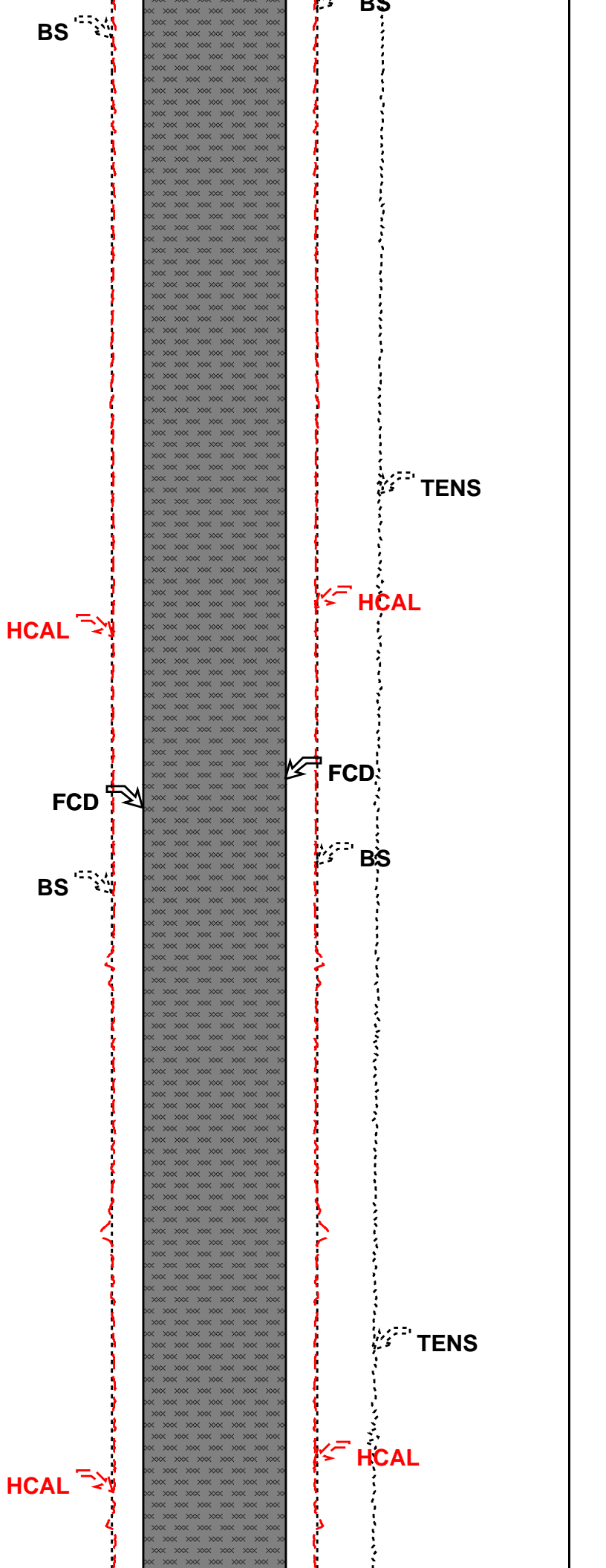


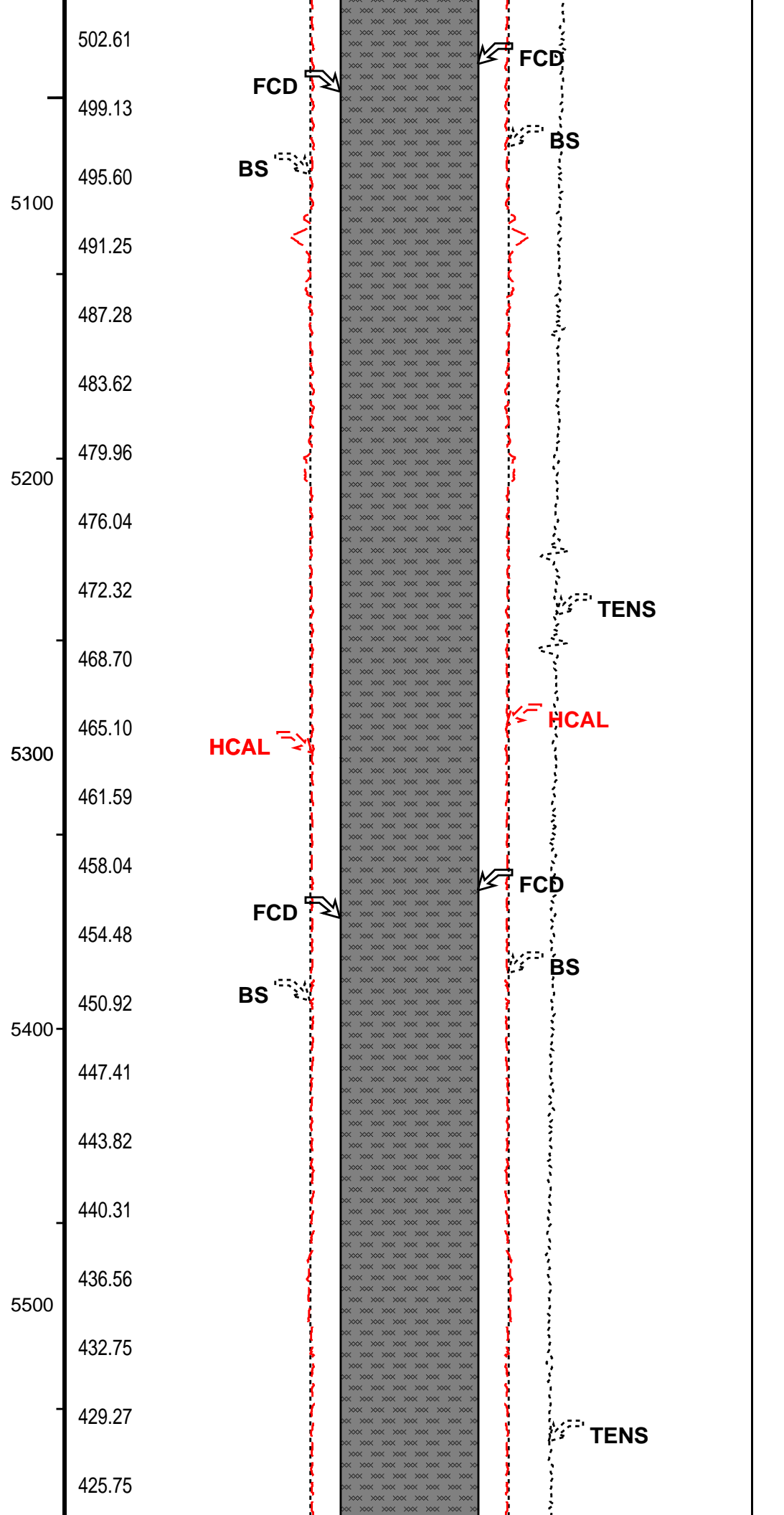
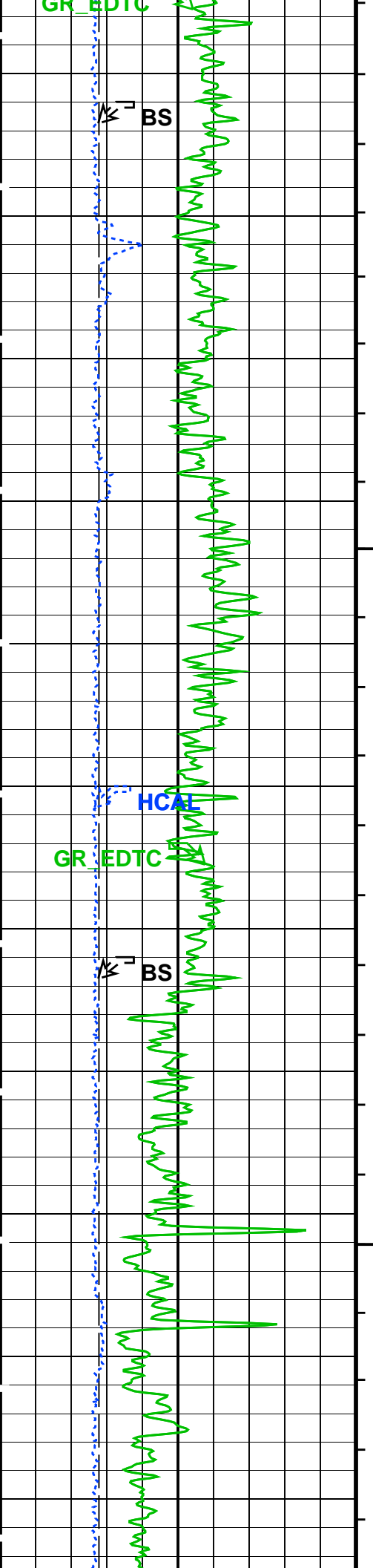


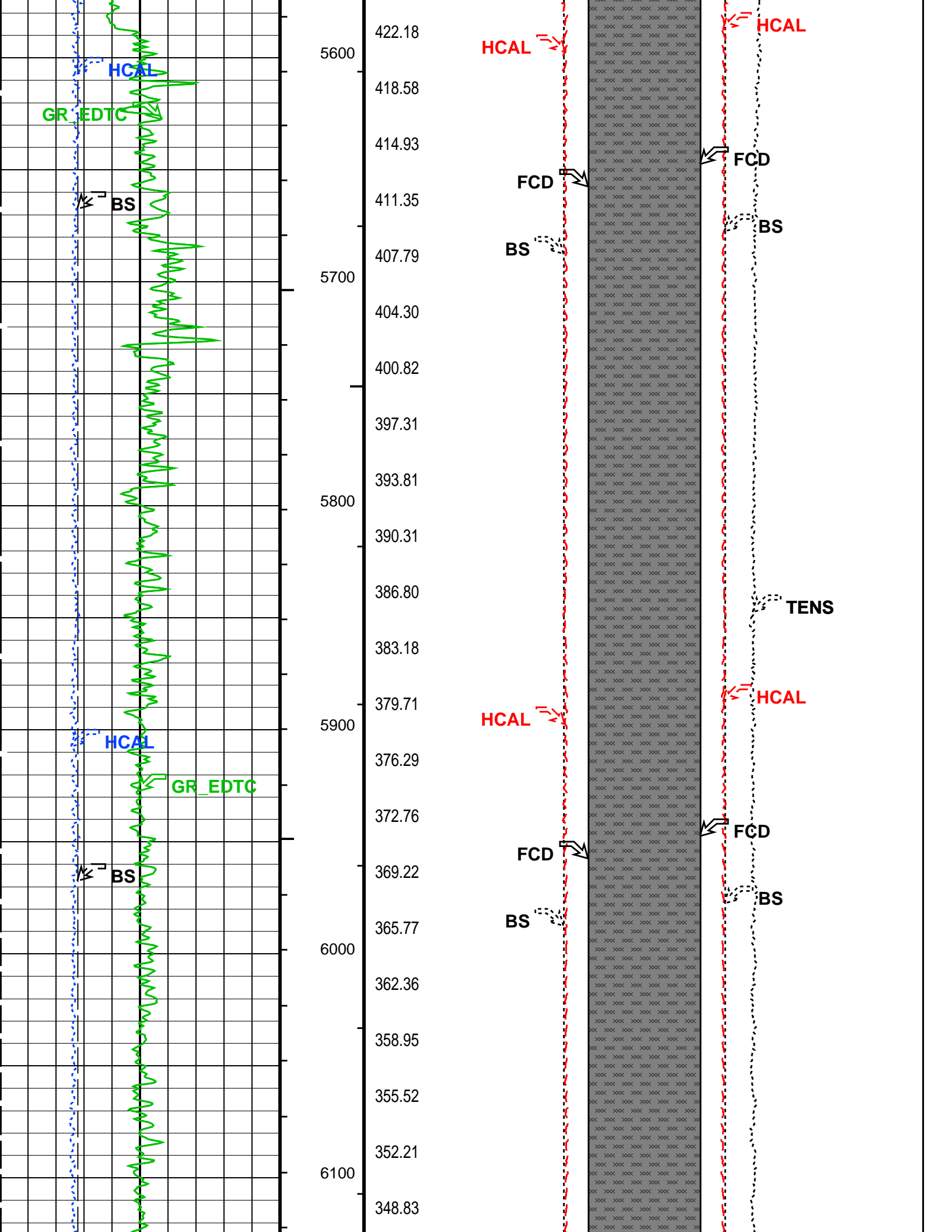


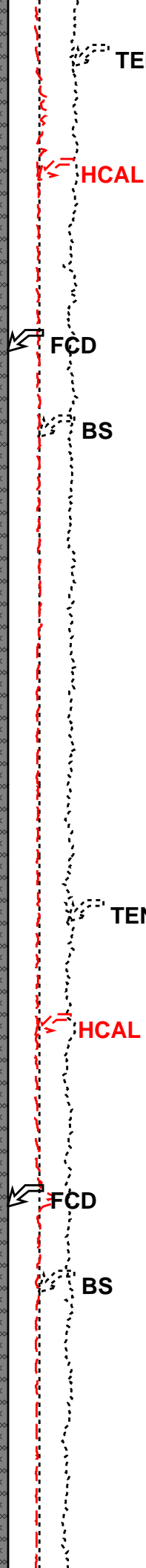
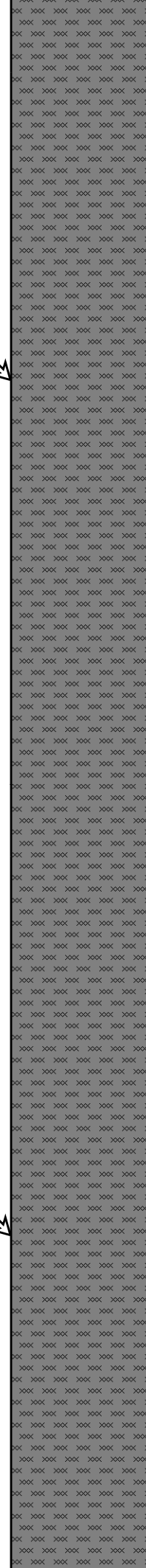
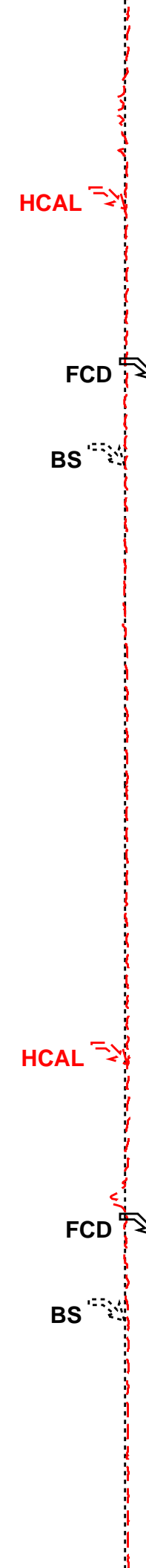
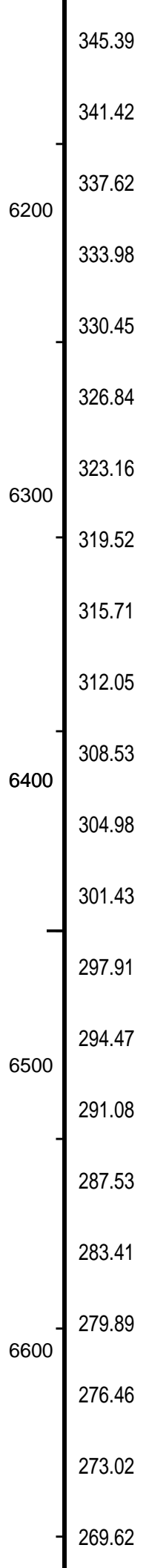
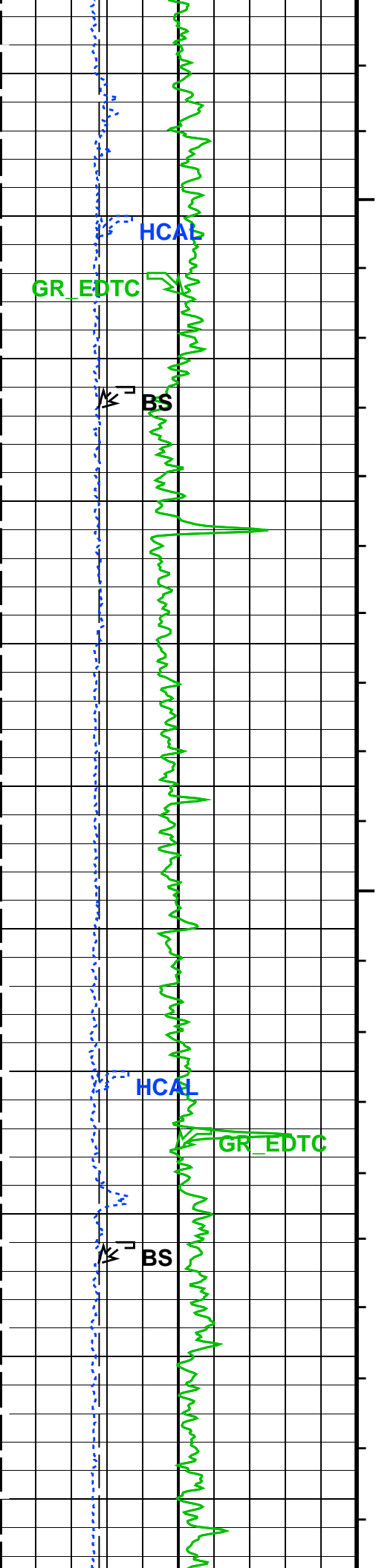


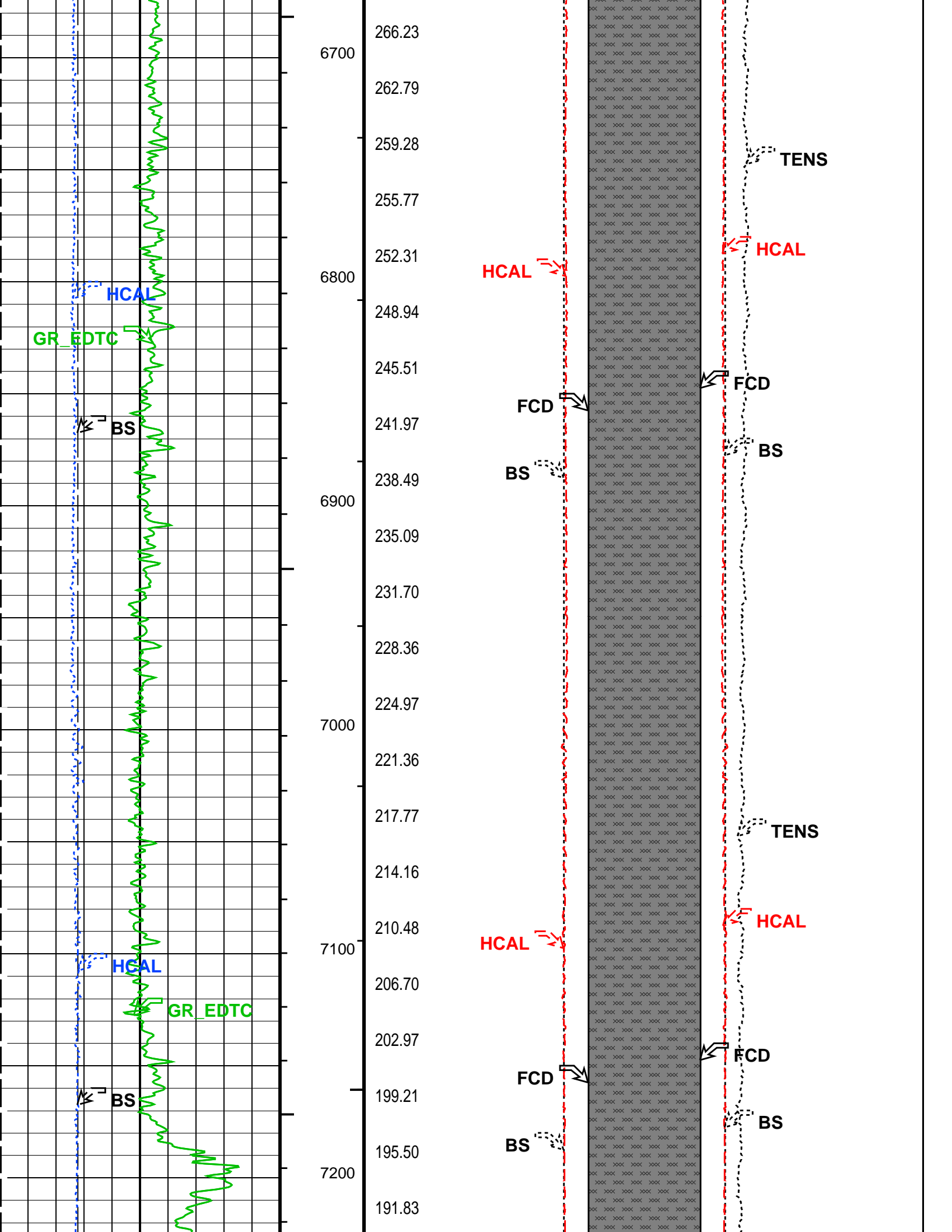
582.00
4500
578.52
574.99
571.43
567.78
4600
564.06
560.37
556.76
4700
553.18
549.57
545.96
542.36
4800
538.85
535.17
531.49
527.97
524.44
4900
520.35
516.71
513.22
509.73
5000
506.11

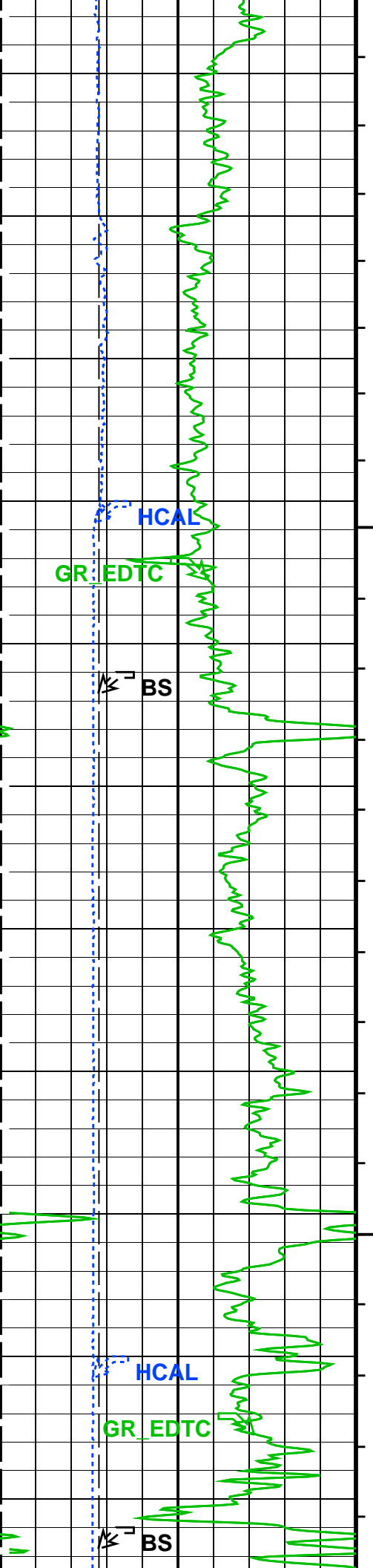












188.19
184.48
180.80
176.93
172.83
168.74
164.74
161.00
157.57
154.17
150.75
147.33
143.97
140.55
137.15
133.73
130.33
126.91
123.51
120.12
116.75
113.39

7300
7400
7500
7600
7700

HCAL

FCD

BS

HCAL

FCD

TENS

HCAL

FCD

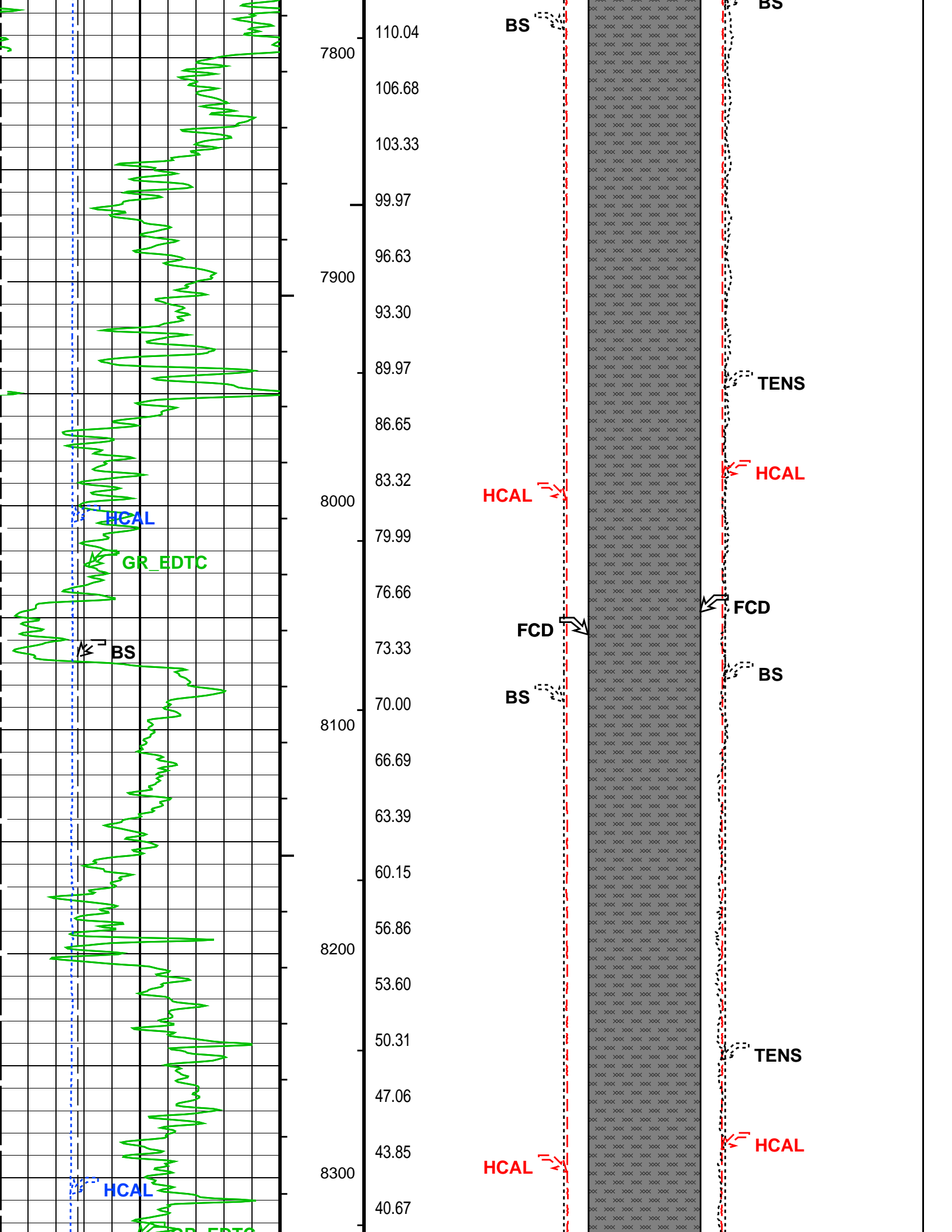
BS

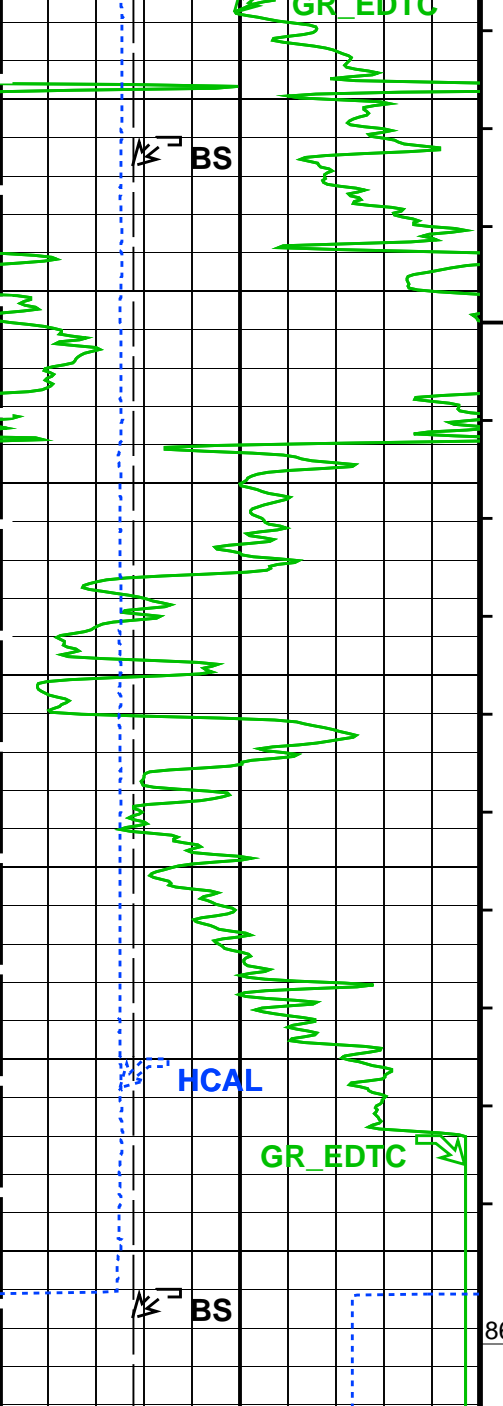
TENS

HCAL

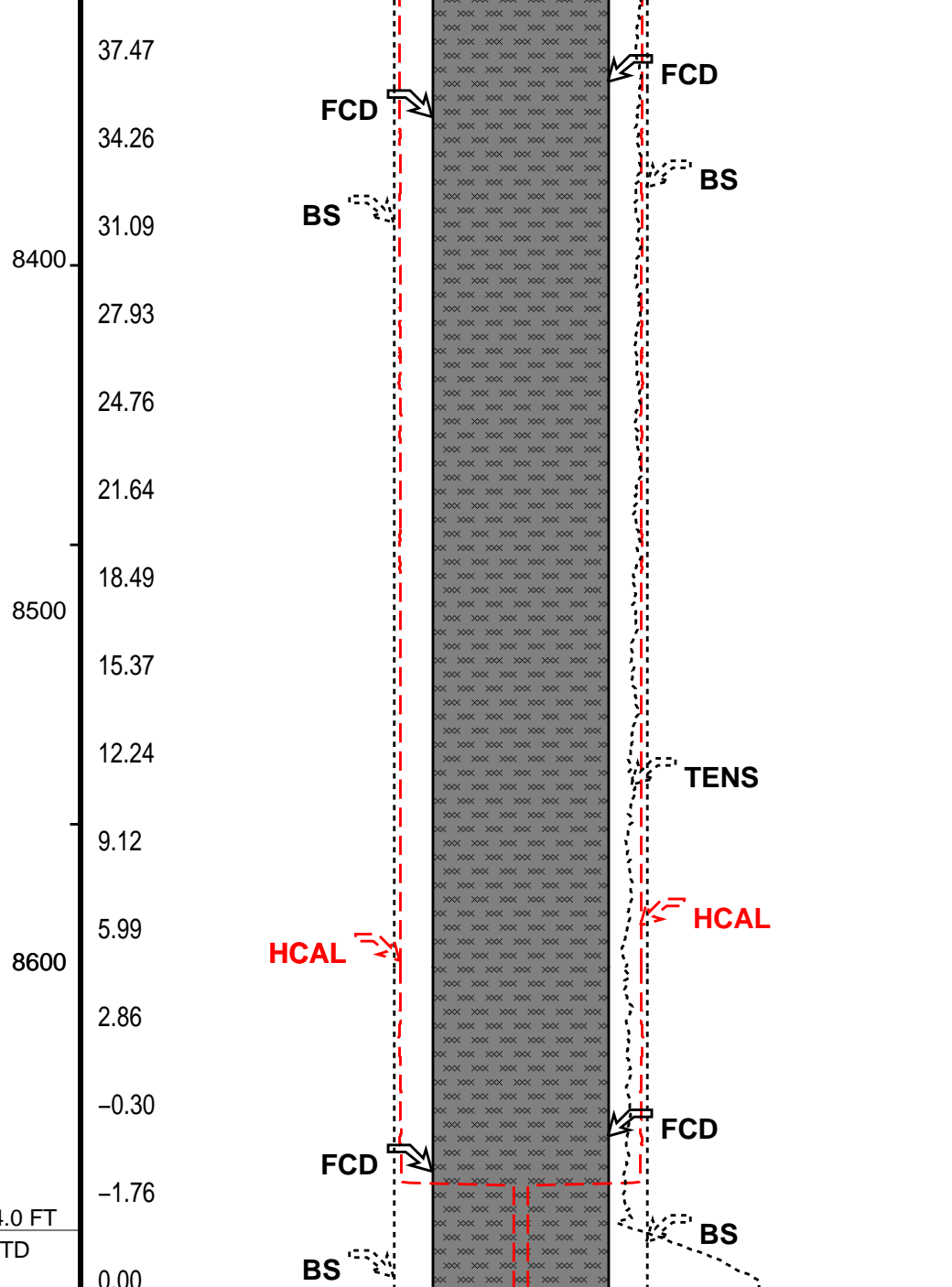
FCD

BS





Bit Size (BS)		
(IN)		
6		16
Gamma Ray (GR_EDTC)		
0	(GAPI)	200
HILT Caliper (HCAL)		
6	(IN)	16



Bit Size (BS)		Bit Size (BS)	
(IN)		(IN)	
23		3 3	23
FCD2 (FCD)		FCD3 (FCD)	
(IN)		(IN)	
23		3 3	23
HILT Caliper (HCAL)		HILT Caliper (HCAL)	
(IN)		(IN)	
23		3 3	23
Cement Volume (ICV) (F3)		Tension (TENS) (LBF)	
		6000	0

FCD2 – FCD3
From FCD2 to FCD3

PIP SUMMARY

- └ Integrated Hole Volume Minor Pip Every 10 F3
- └ Integrated Hole Volume Major Pip Every 100 F3
- └ Integrated Cement Volume Minor Pip Every 10 F3
- └ Integrated Cement Volume Major Pip Every 100 F3

Time Mark Every 60 S

Parameters

DLIS Name	Description	Value	
DIR: Directional Survey Computation			
SPVD	TVD of Starting Point	0	FT
TIMD	Along-hole depth of Tie-in Point	0	FT
TIVD	TVD of Tie-in Point	0	FT
HOLEV: Integrated Hole/Cement Volume			
FCD	Future Casing (Outer) Diameter	7	IN
HVCS	Integrated Hole Volume Caliper Selection	AUTOMATIC	
System and Miscellaneous			
BS	Bit Size	8.750	IN
DO	Depth Offset for Playback	0.0	FT
PP	Playback Processing	NORMAL	
TD	Total Depth	8674	FT

Format: G_DCAL_FORMAT Vertical Scale: 2" per 100' Graphics File Created: 17-Jan-2012 10:17

OP System Version: 18C0-147

ZAIT-CA	18C0-147	HILTB-FTB	18C0-147
GPIT-C	SRPC-4072-Q4_2010_OP18	ECS-HP	HFE-4001-OP18-NUCL
ECC-B	HFE-4001-OP18-NUCL	ADT-C	SRPC-5036-ADT-C
EDTC-B	SRPC-4072-Q4_2010_OP18		

Input DLIS Files

DEFAULT	Splice_AIT_TLD_MCFL_051CUP	FN:1	PRODUCER	17-Jan-2012 02:57	8691.0 FT	182.0 FT
---------	----------------------------	------	----------	-------------------	-----------	----------

Output DLIS Files

DEFAULT	AIT_TLD_MCFL_CNL_010PUP	FN:9	PRODUCER	17-Jan-2012 10:17
---------	-------------------------	------	----------	-------------------

Company: **Conoco Phillips Company**

Schlumberger

Well: **Tebo 32-2**
Field: **Wildcat**
County: **Arapahoe**
State: **Colorado**

Platform Express
Cement Volume