

Décollement
Consulting
Inc.



Scale: 5.65" / 100'
Measured Depth Log

Well Name Antelope F-J-18-HNB

Location NWNW Sec 18, T5N, R62W

State Colorado

Country USA

API Number 05-123-35865-00

Spud Date 3/17/2013

Surface Coordinates 585 FNL X 1178 FWL

County Weld

Rig Number Ensign 136

Ground Elevation 4,614

Logged Interval 6,100

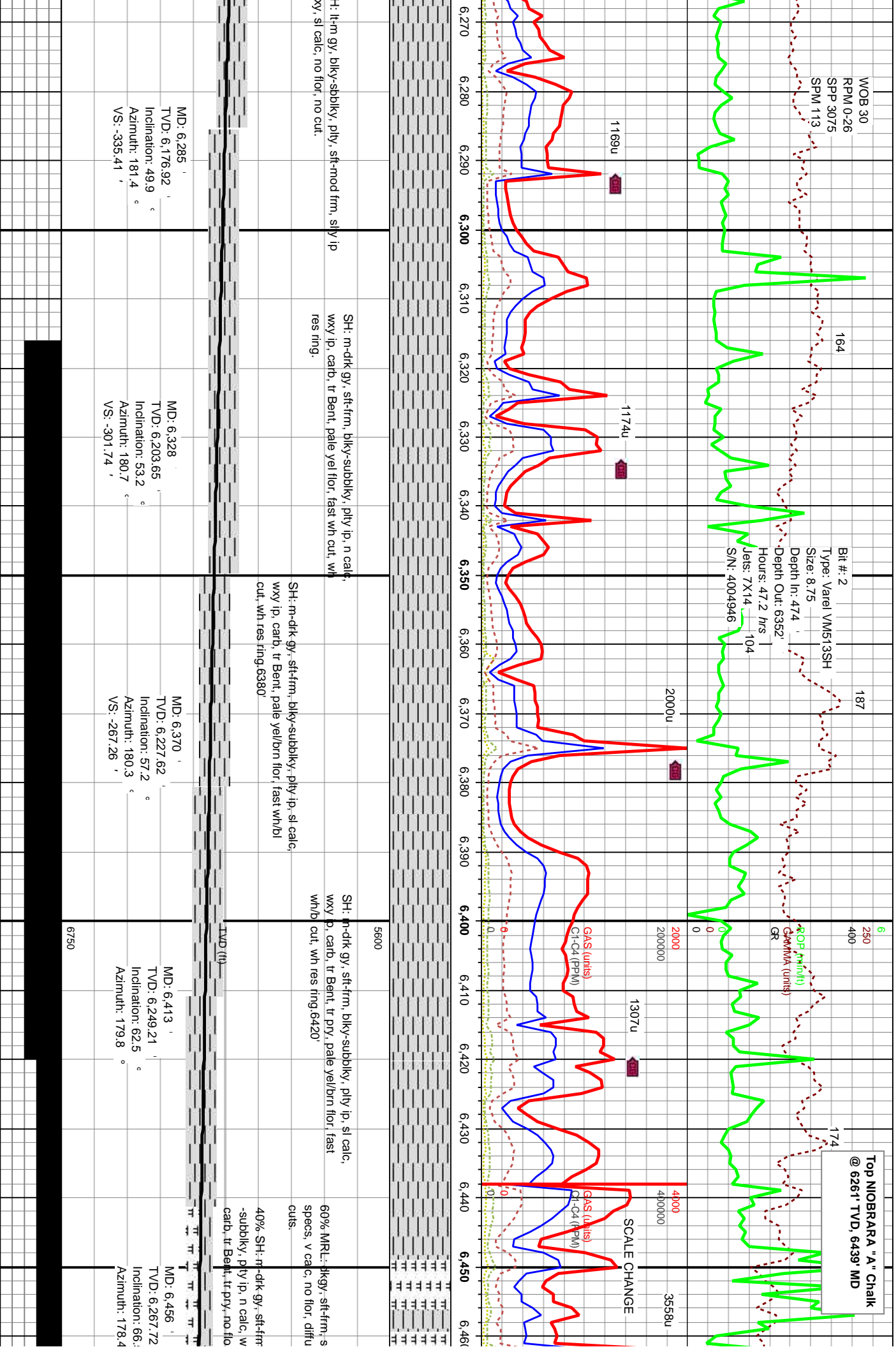
Formation Niobrara "B" Chalk

K.B. Elevation 4,626

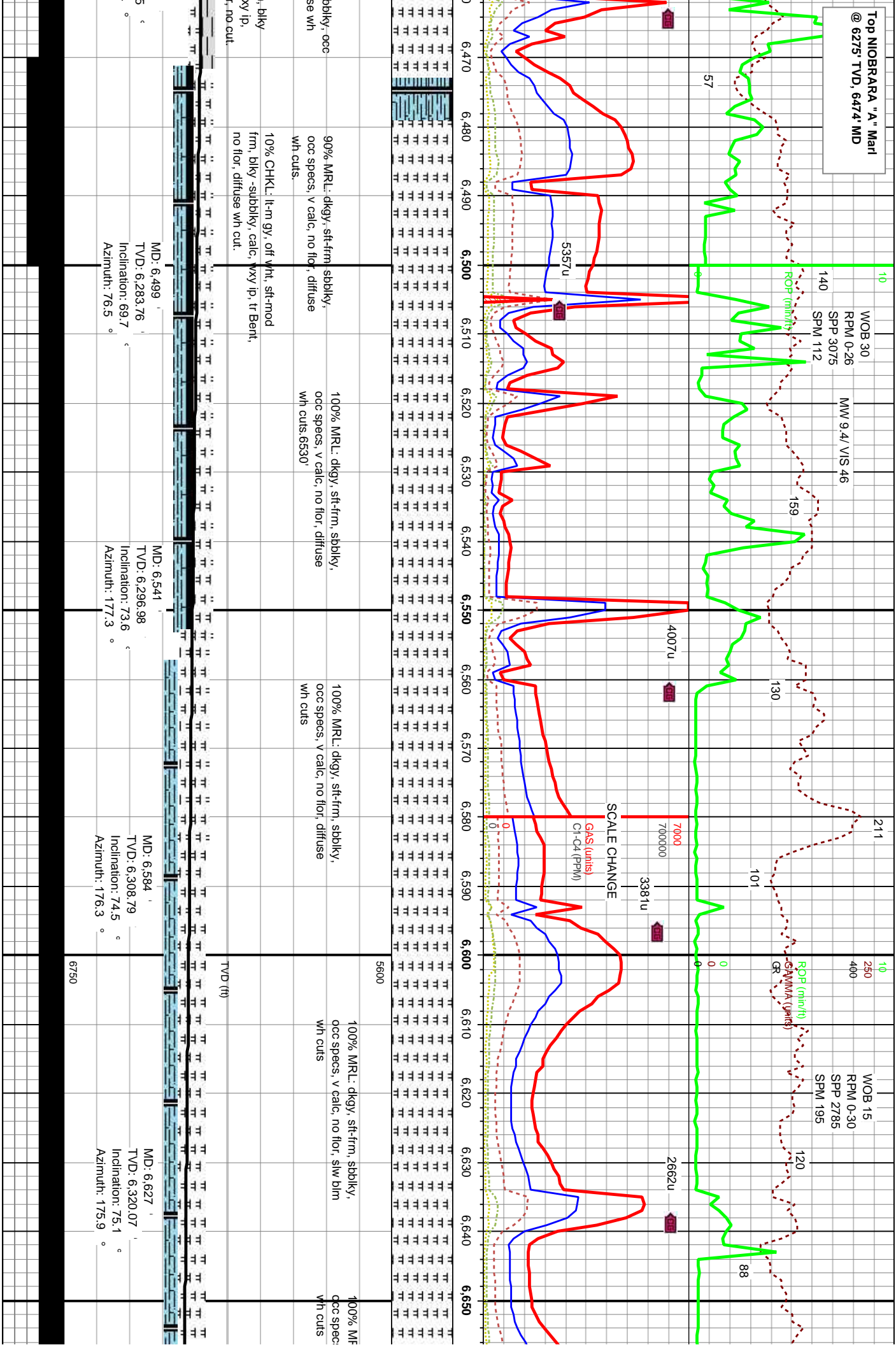
Company Bonanza Creek Energy
Address 410 17th Street, Suite
Denver, CO 80202

Name Leo Carrasco/Chirs
Company Décollement Consulting
13300 Braun Road
Golden, CO 80401





**Top NIOBRARA "A" Marl
@ 6275' TVD, 6474' MD**



MM 9.2/ VIS 47

127

WOB 221
RPM 0-30
SPP 3028
SPM 206

114

MM 9.3/ VIS 42

91

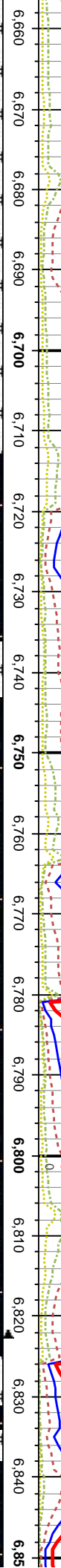
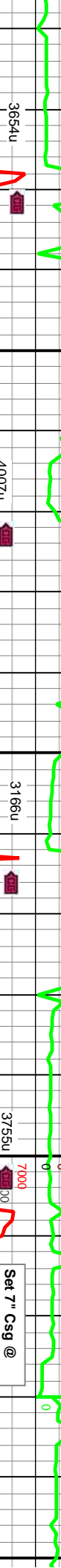
MND @ 6826' 03/25/2013

Resumed Drilling
03/26/2013
12:19 am

Bit #: 3
Type: Varel
Size: 6 1/8
Depth In: 6826'
Depth Out: 10982'
Hours: 26.2 hrs
S/N: 4005167

ROP (min/ft)
GAMMA (units)
GR

ROP (min/ft)
GAMMA (units)
GR



MD: 6,670
TVD: 6,330.72
Inclination: 76.2
Azimuth: 176.1

MD: 6,713
TVD: 6,339.07
Inclination: 81.4
Azimuth: 176.3

MD: 6,755
TVD: 6,343.83
Inclination: 85.6
Azimuth: 177.3

MD: 6,777
TVD: 6,345.21
Inclination: 87.2
Azimuth: 176.8

60% CHKL: lt-m gy, off wht, sft-mod
frm, blkly -subdkly, calc, wxy ip, no flr,
diffuse wh cut.

80% CHKL: lt-m gy, off wht, sft-mod
frm, blkly -subdkly, calc, wxy ip, no flr,
wh/bl cut.

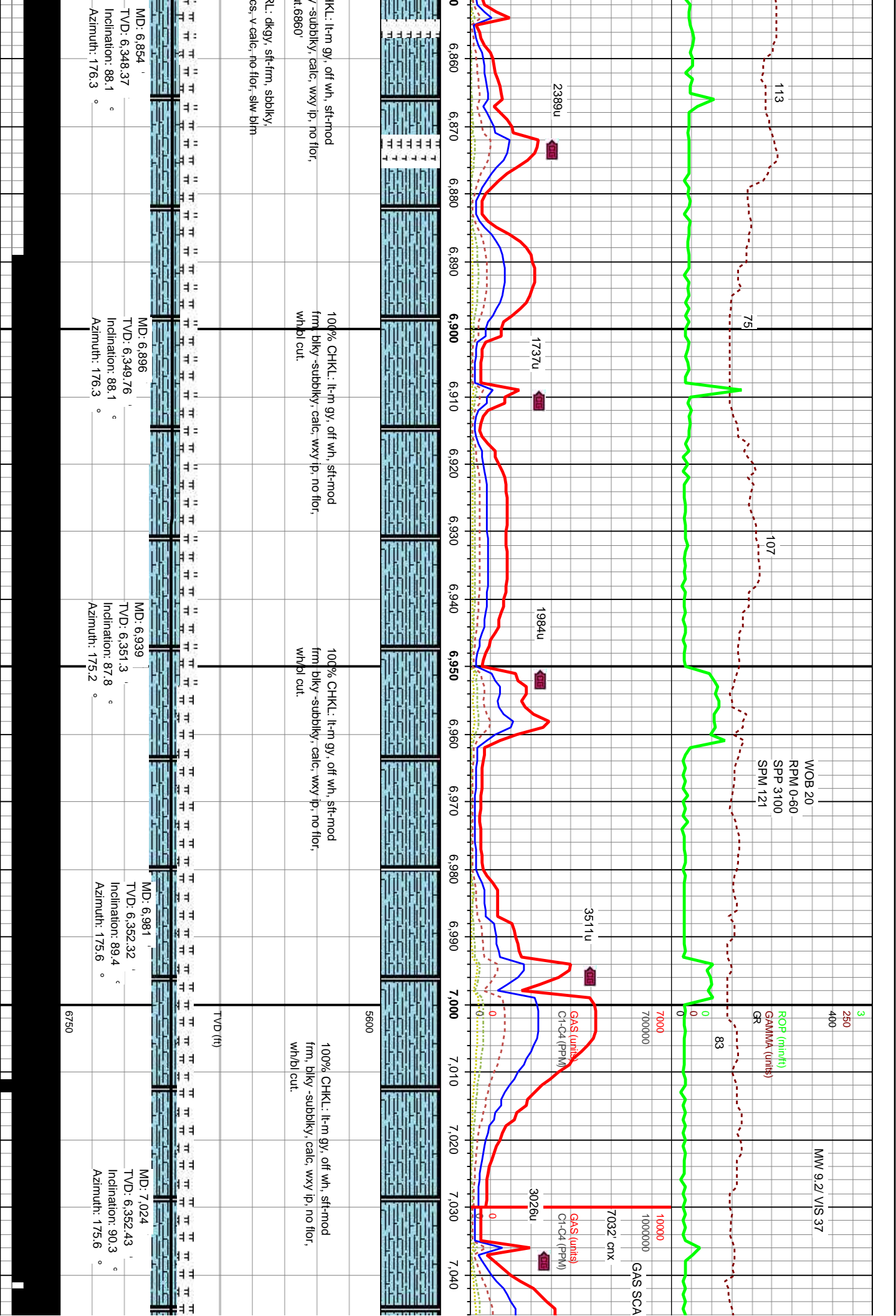
100% CHKL: lt-m gy, off wht, sft-mod
frm, blkly -subdkly, calc, wxy ip, no flr,
wh/bl cut.

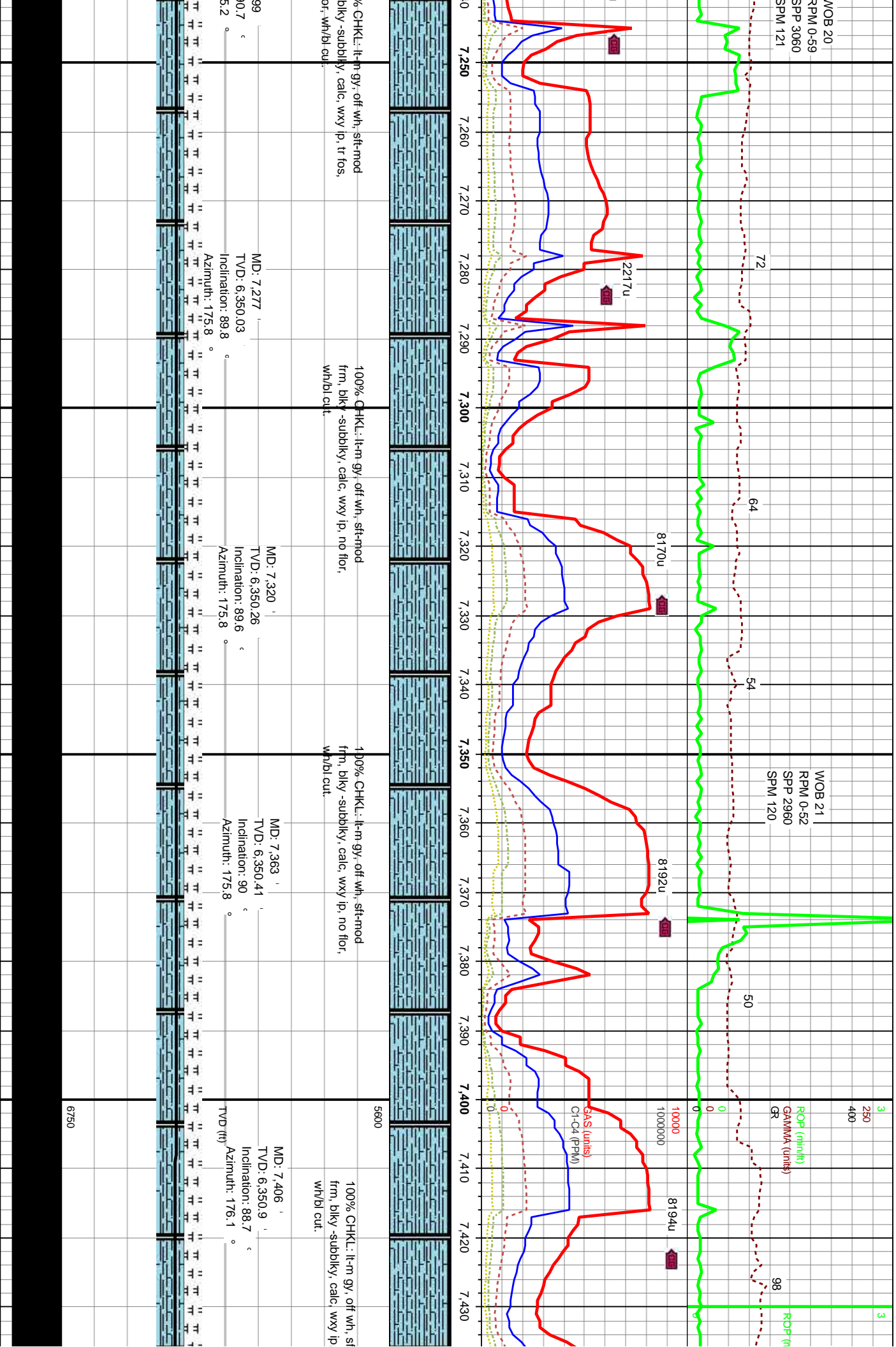
100% CHKL: lt-m gy, off wht, sft-mod
frm, blkly -subdkly, calc, wxy ip, no flr,
wh/bl cut.

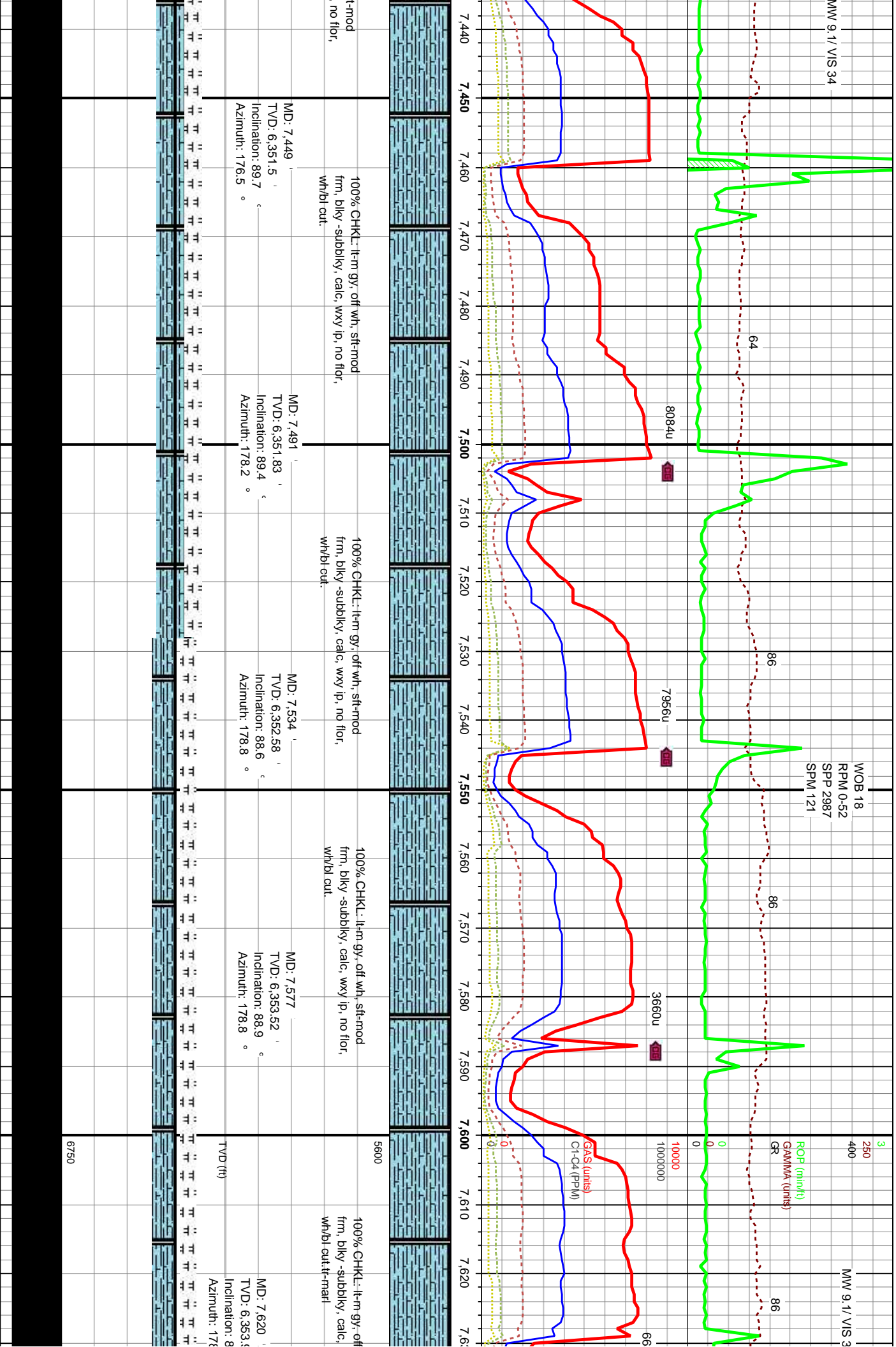
90% CHKL: lt-m gy, off wht, sft-mod
frm, blkly -subdkly, calc, wxy ip, no flr,
wh/bl cut.

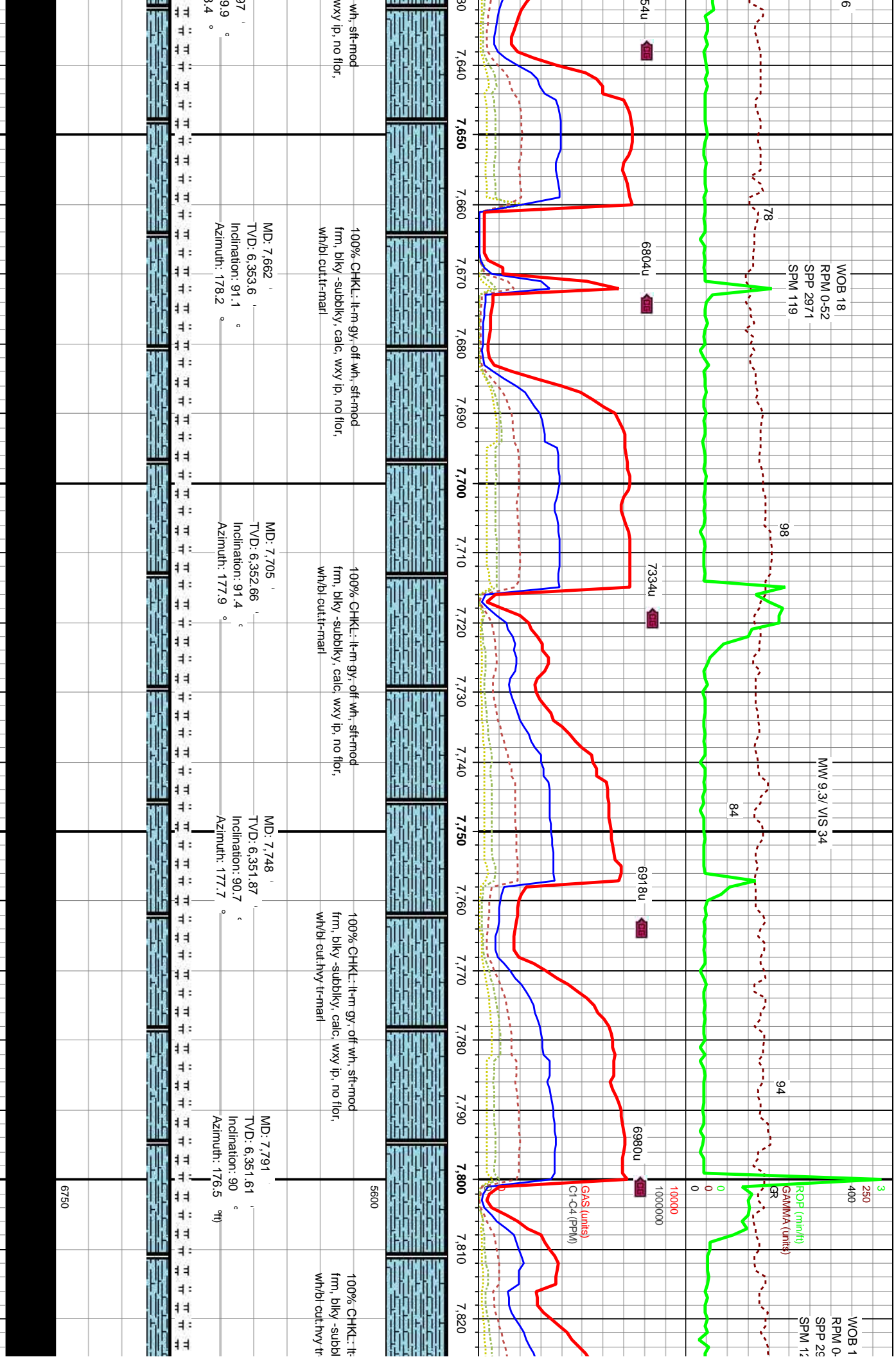
5600

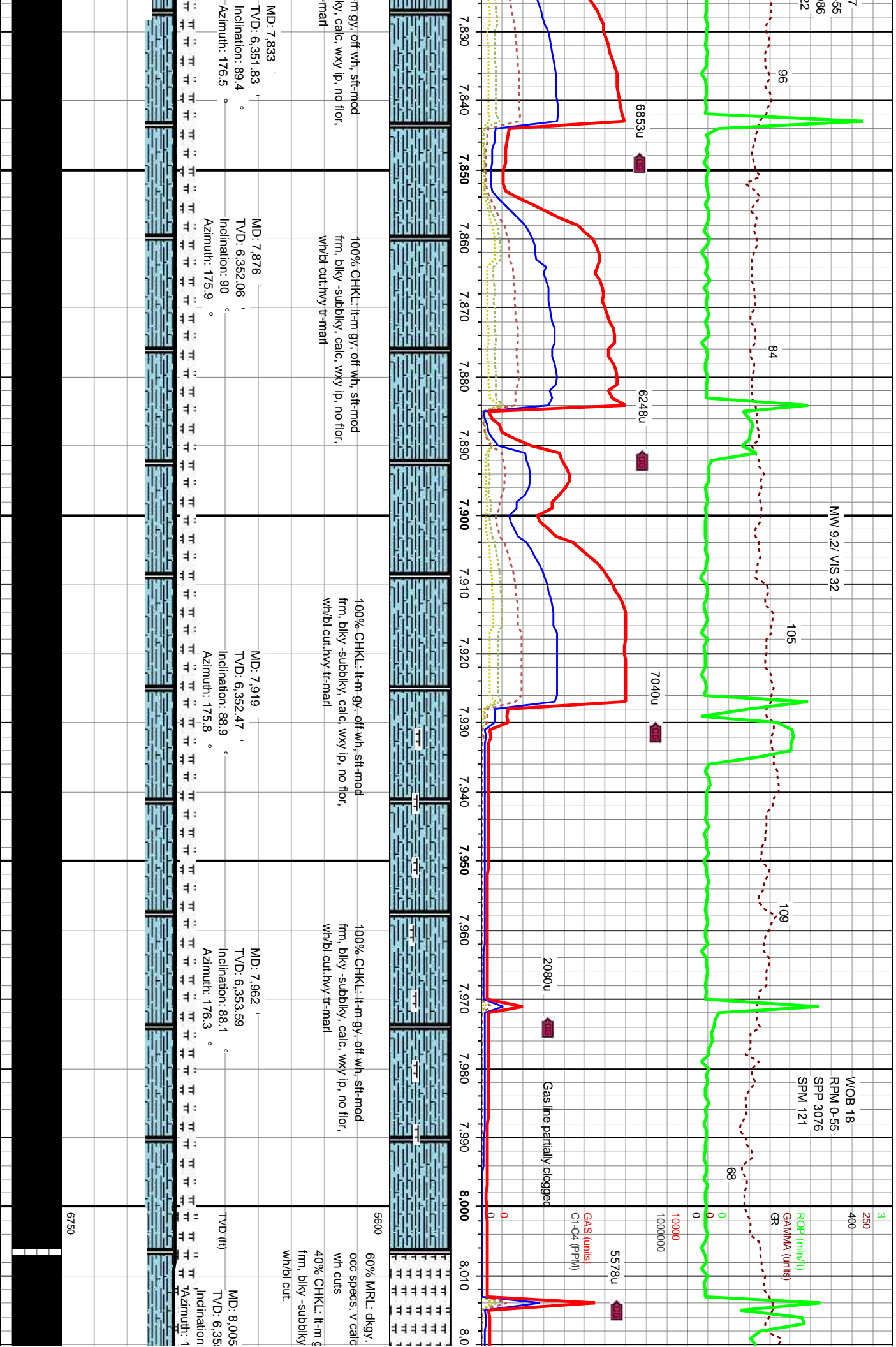
TVD (ft)

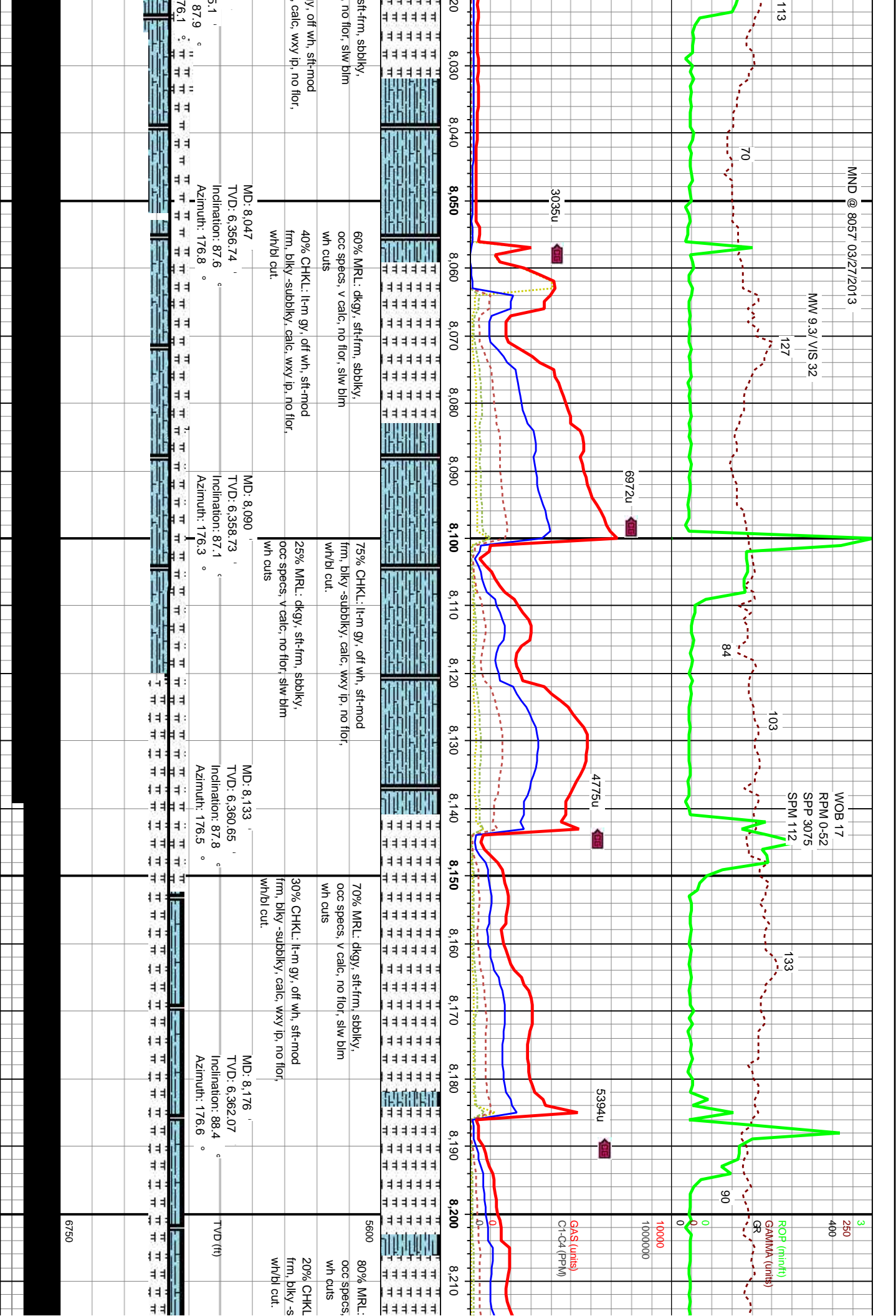


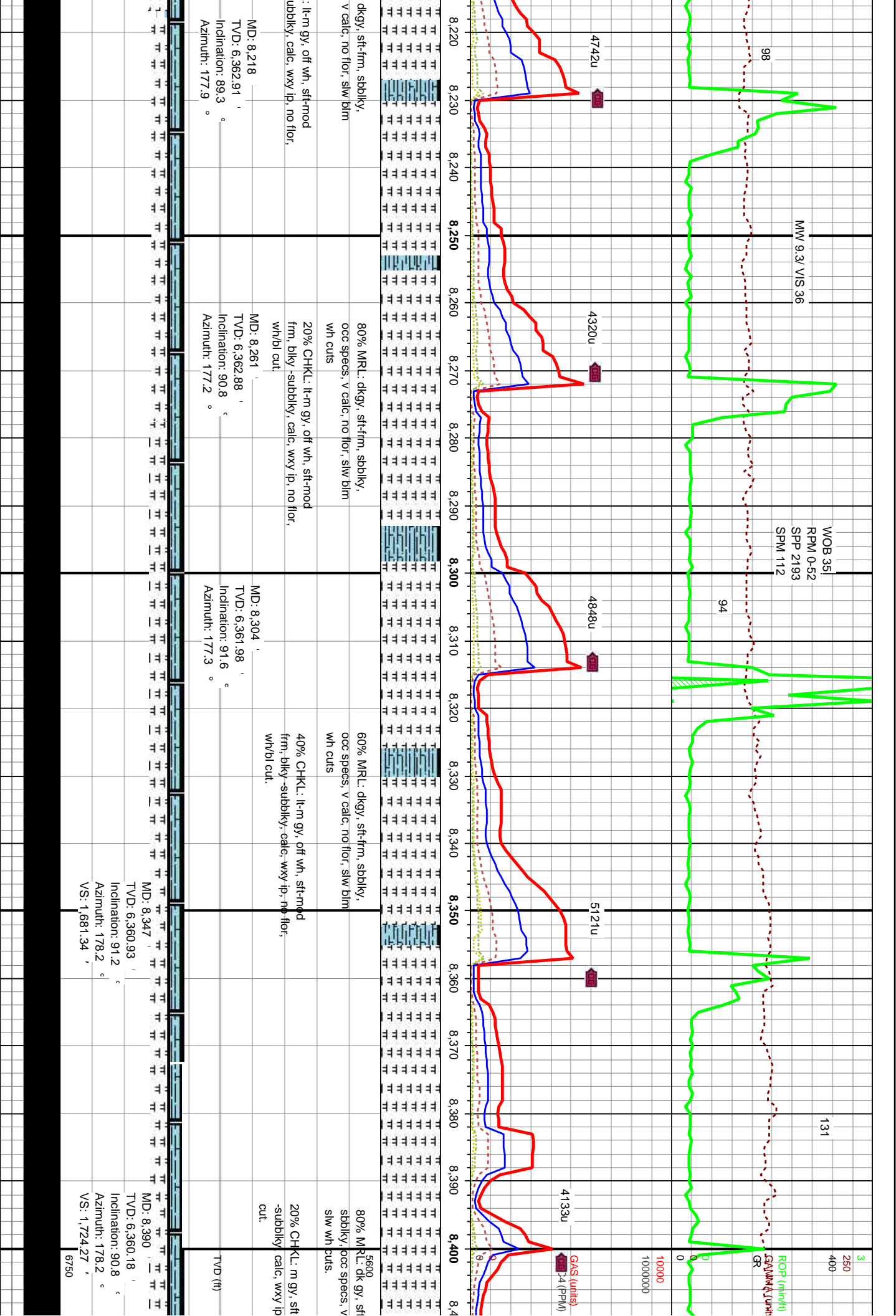




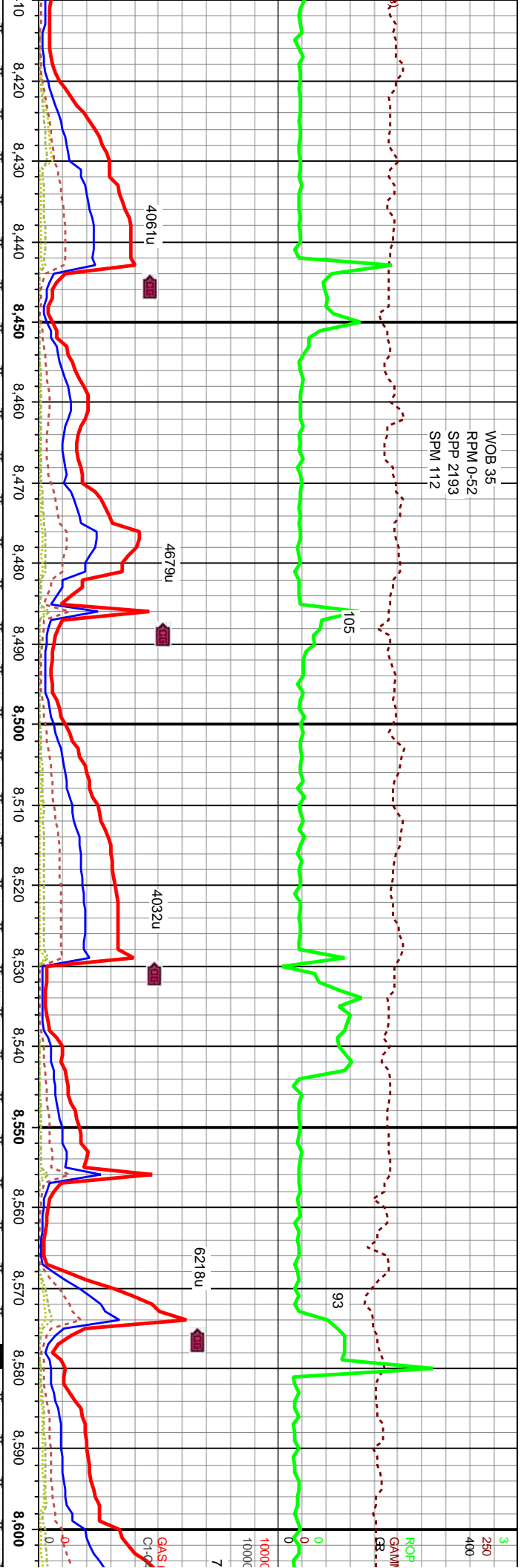








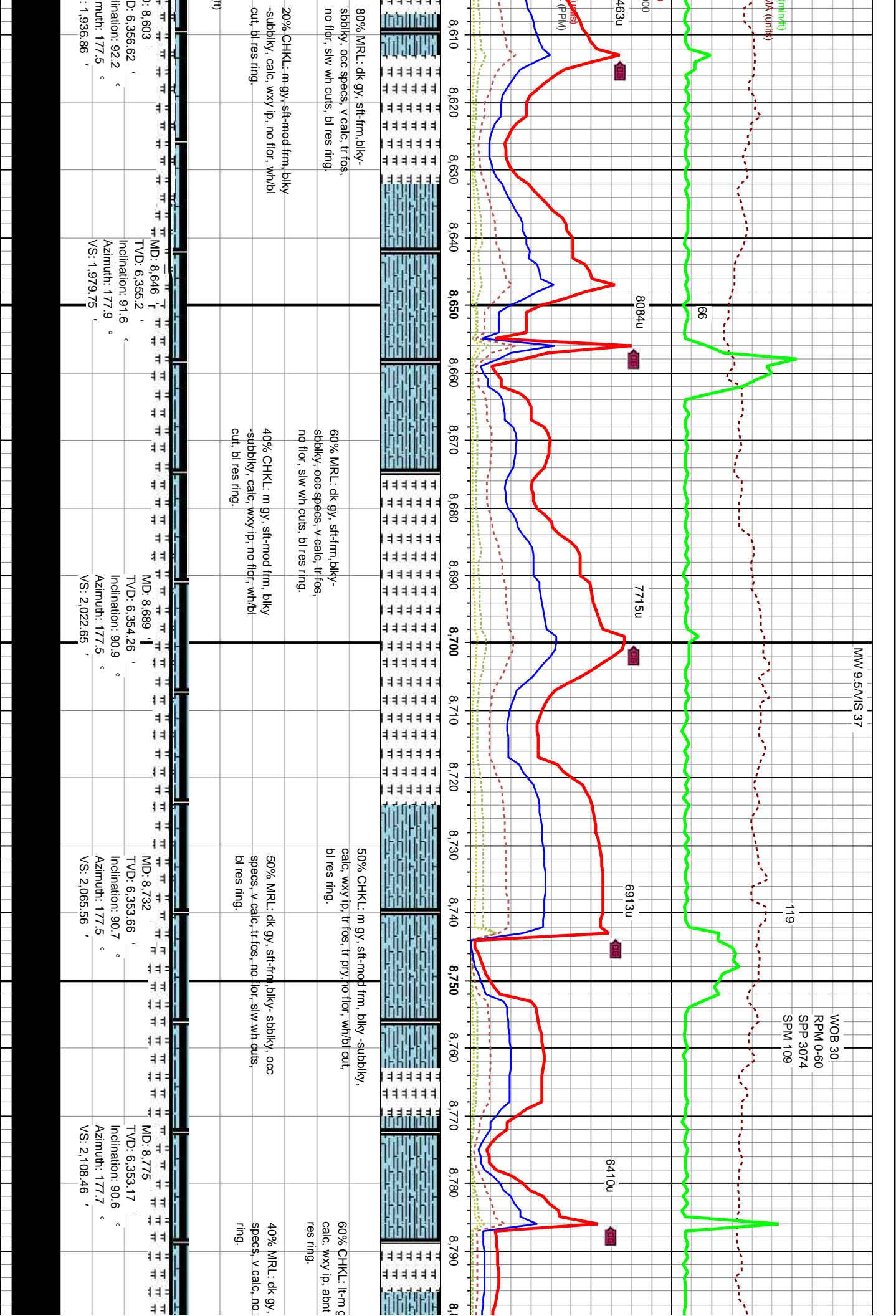
WOB 35
RPM 0-52
SPM 2193
SPM 112



90% MRL: dk gy, sft-frm, biky-
sbbiky, odc specs, v calc, tr fos,
no flr, slw wh cuts.
10% CHKL: m gy, sft-mod frm, biky
-subbiky, calc, wxy ip, no flr, wh/bl
cut.

MD: 8,432	MD: 8,475	MD: 8,518	MD: 8,561
TVD: 6,359.7	TVD: 6,359.44	TVD: 6,359.17	TVD: 6,358.2
Inclination: 90.5 °	Inclination: 90.2 °	Inclination: 90.5 °	Inclination: 92.1 °
Azimuth: 178.6 °	Azimuth: 177.7 °	Azimuth: 178.4 °	Azimuth: 177.2 °
VS: 1,766.21	VS: 1,809.15	VS: 1,852.08	VS: 1,894.98

ME	TV	Inc	Az	VS
6750				



3
250
400

ROP (min/ft)
GAMMA (units)
GR

0
10000
1000000

GAAS (units)
Ct-C4 (PPM)

500
8,810
8,820
8,830
8,840
8,850
8,860
8,870
8,880
8,890
8,900
8,910
8,920
8,930
8,940
8,950
8,960
8,970
8,980
8,990

5600

y, sft-mod frm, blkly- subblkly,
os, tr pry, no flor, wh/bl cut, bl

sft-frm, blkly- sbblkly, occ
or, slw wh cuts, bl res

TVD (ft)

MD: 8,817
TVD: 6,353.02

Inclination: 89.8 °
Azimuth: 176.5 °
VS: 2,150.35 '

6750

80% CHKL: lt-m gy, sft-mod frm, blkly- subblkly,
calc, wxy ip, abnt fos, tr pry, no flor, wh/bl cut, bl
res ring.

40% MRL: dk gy, sft-frm, blkly- sbblkly, occ specs,
v calc, no flor, slw wh cuts, bl res ring.

MD: 8,860
TVD: 6,352.84

Inclination: 90.7 °
Azimuth: 179.8 °
VS: 2,193.28 '

60% CHKL: lt-m gy, sft-mod frm, blkly- subblkly,
calc, wxy ip, abnt fos, tr pry, no flor, wh/bl cut, bl
res ring.

40% MRL: dk gy, sft-frm, blkly- sbblkly, occ specs,
v calc, no flor, slw wh cuts, bl res ring.

MD: 8,903
TVD: 6,352.69

Inclination: 89.7 °
Azimuth: 178.6 °
VS: 2,236.25 '

60% CHKL: lt-m gy, sft-mod frm,
wxy ip, abnt fos, tr pry, no flor,

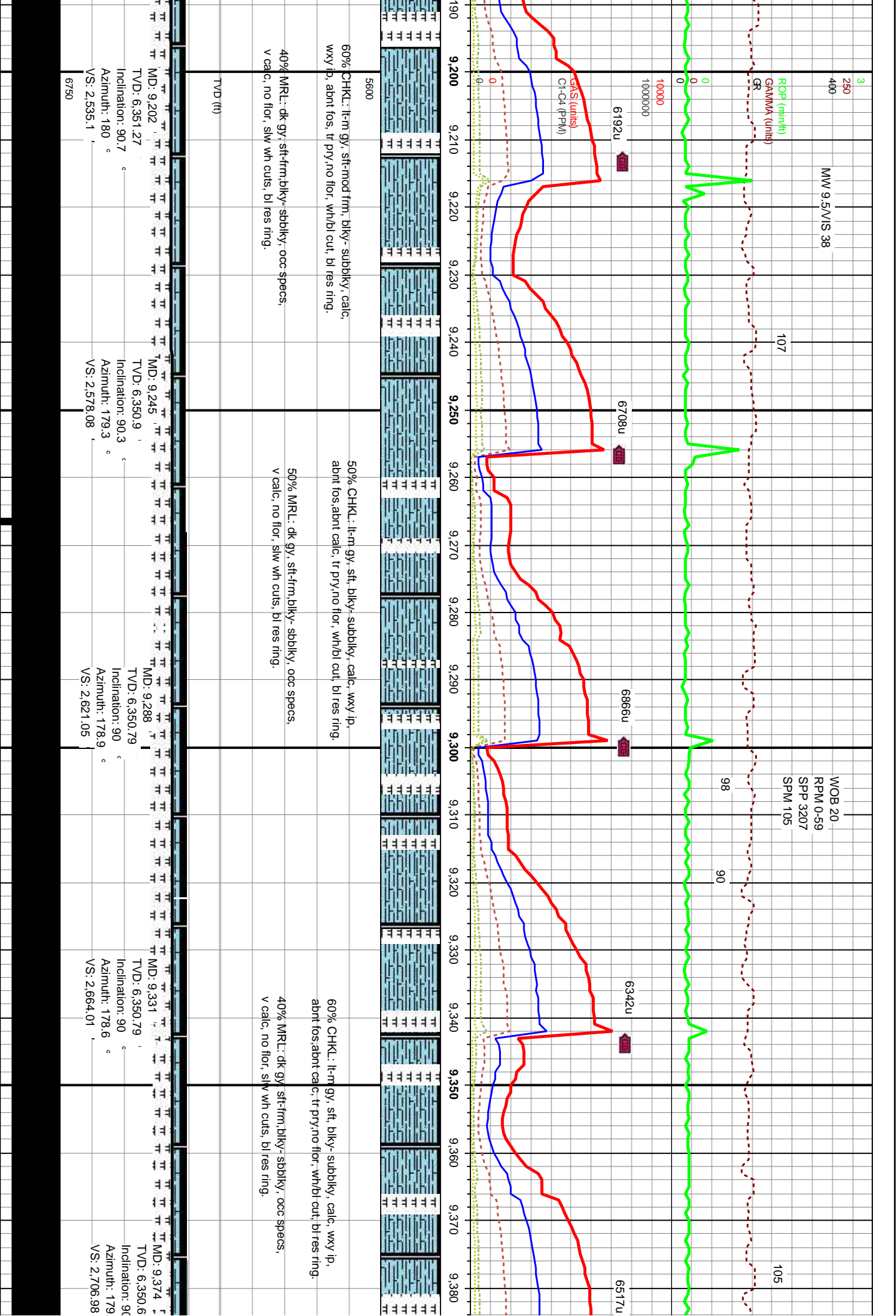
40% MRL: dk gy, sft-frm, blkly
calc, no flor, slw wh cuts, bl fr

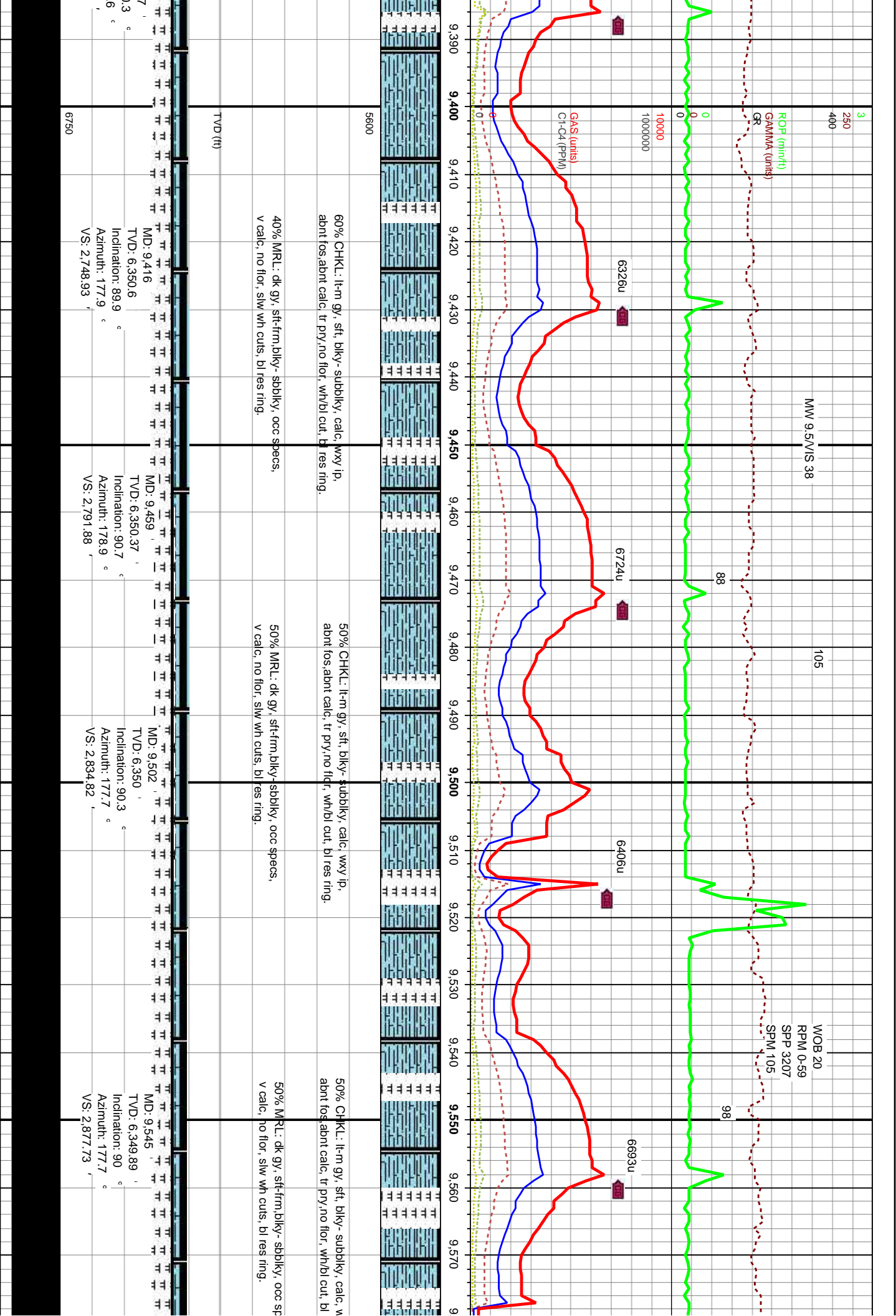
MD: 8,988
TVD: 6,352.61

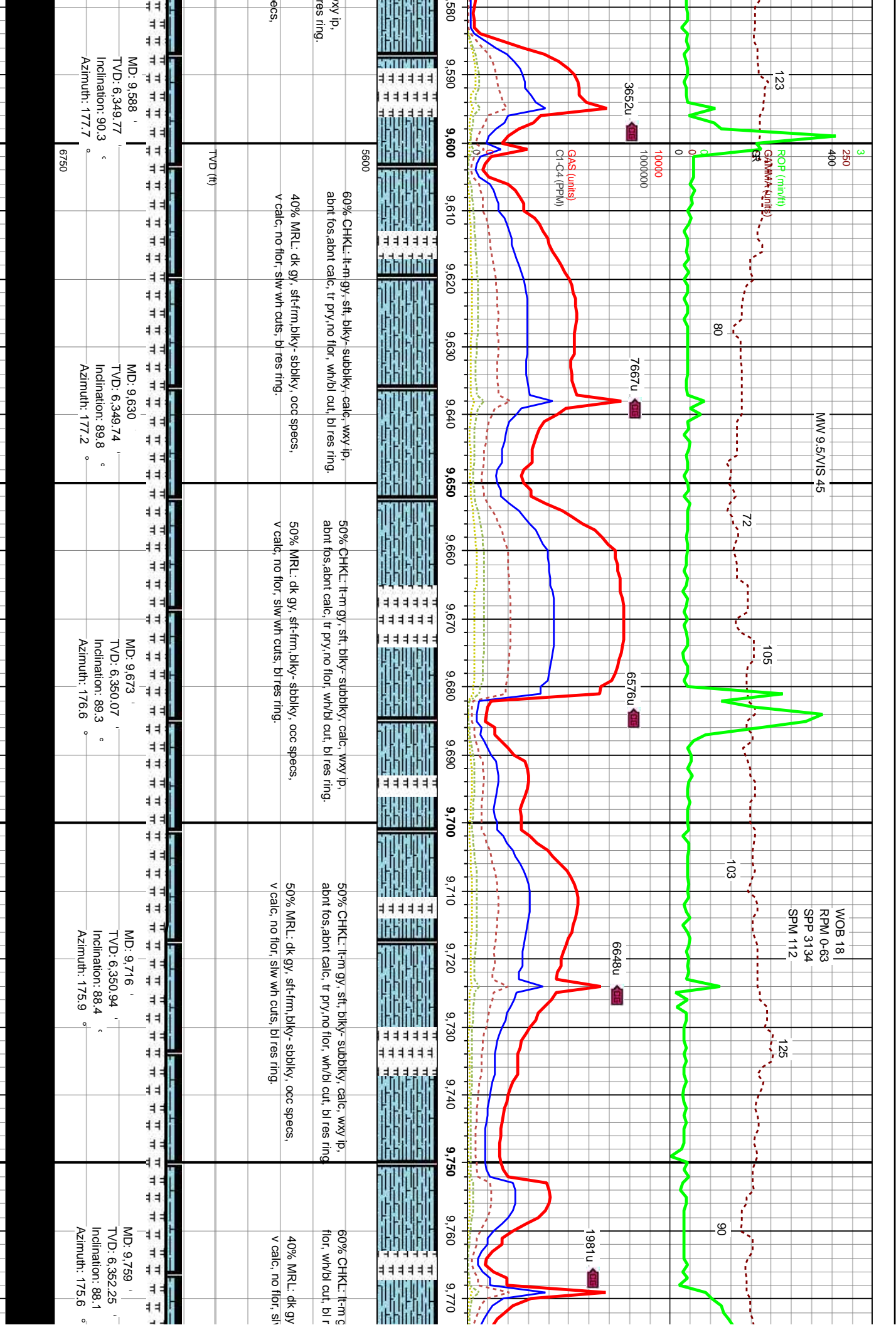
Inclination: 90.5 °
Azimuth: 179.3 °
VS: 2,321.1 '

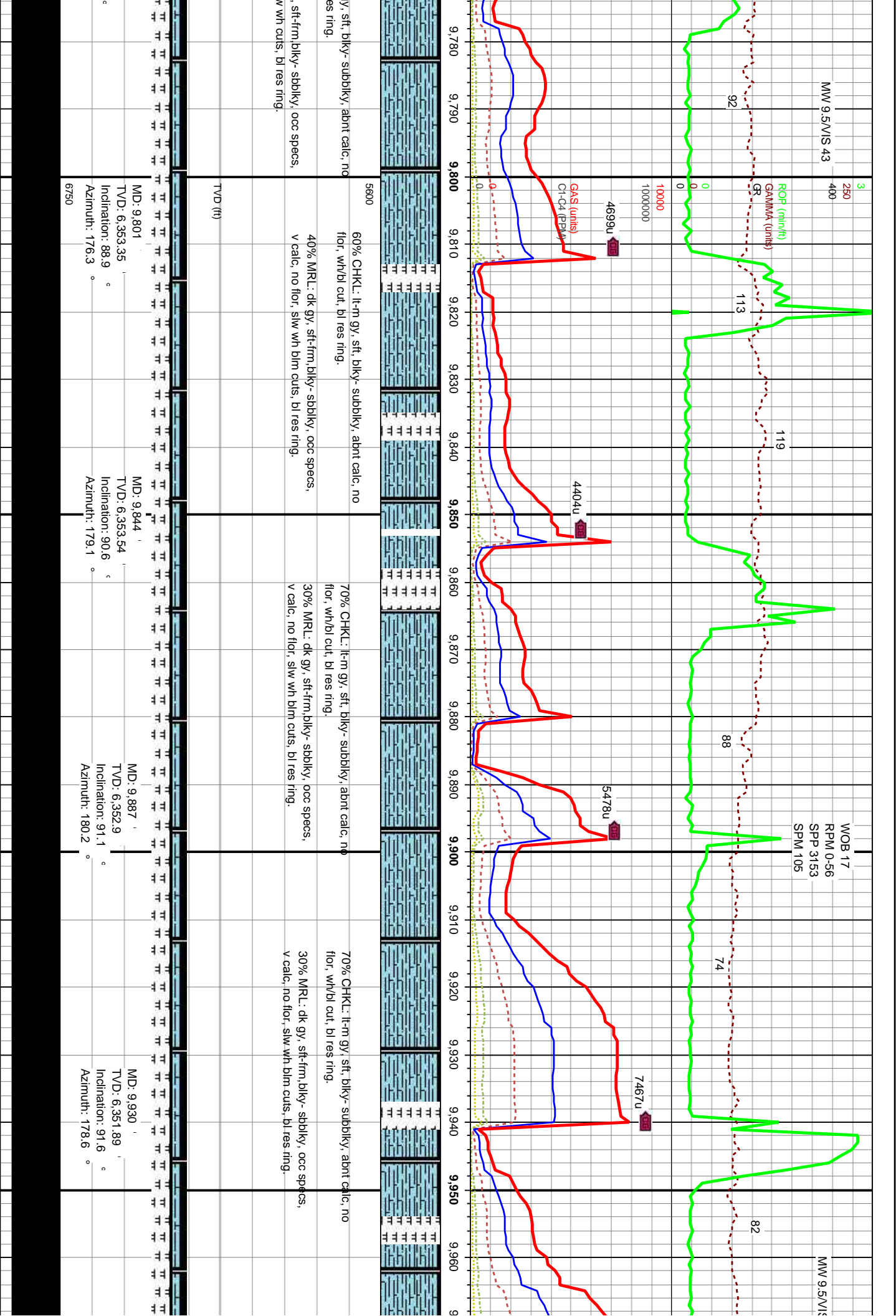
MW 9.5/VIS 37

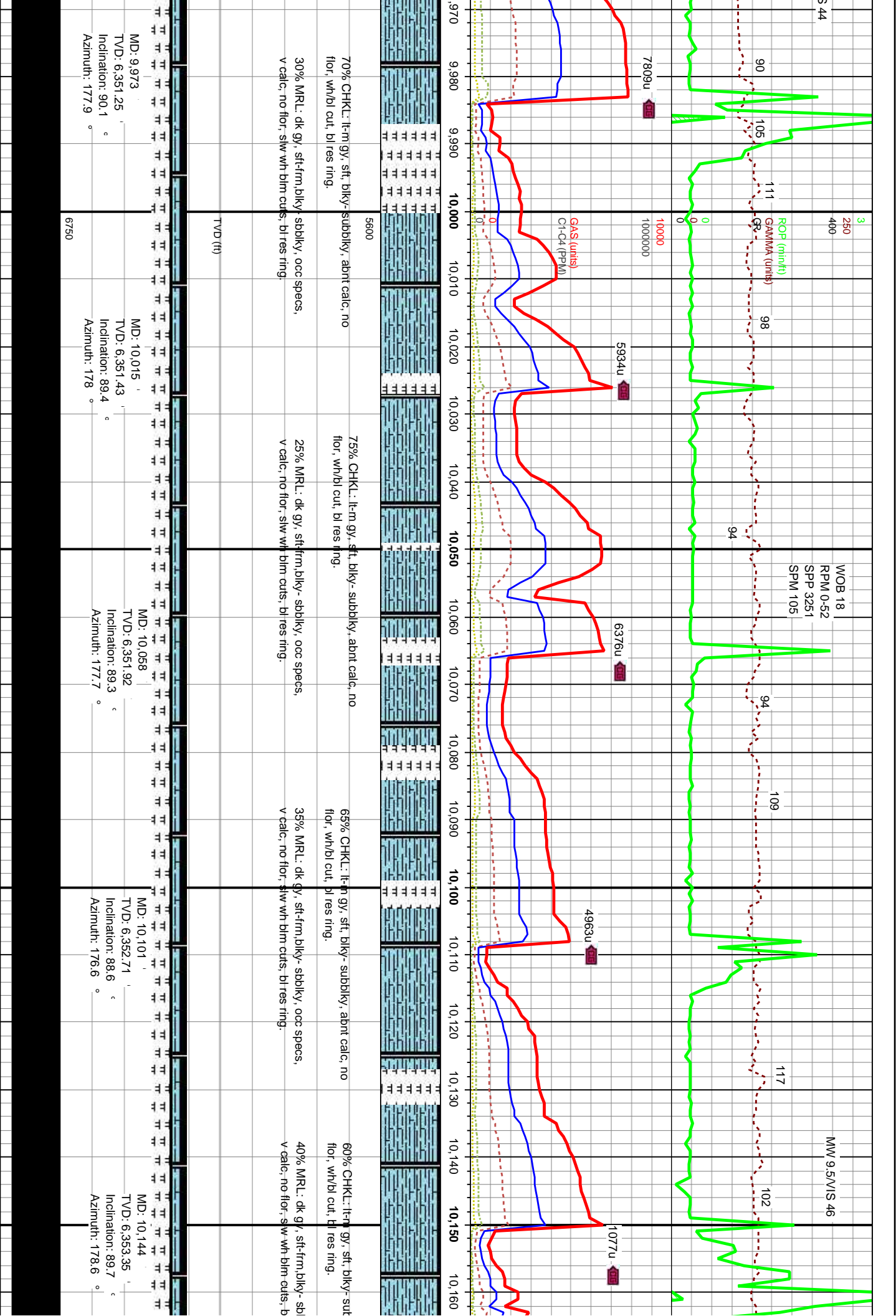
6

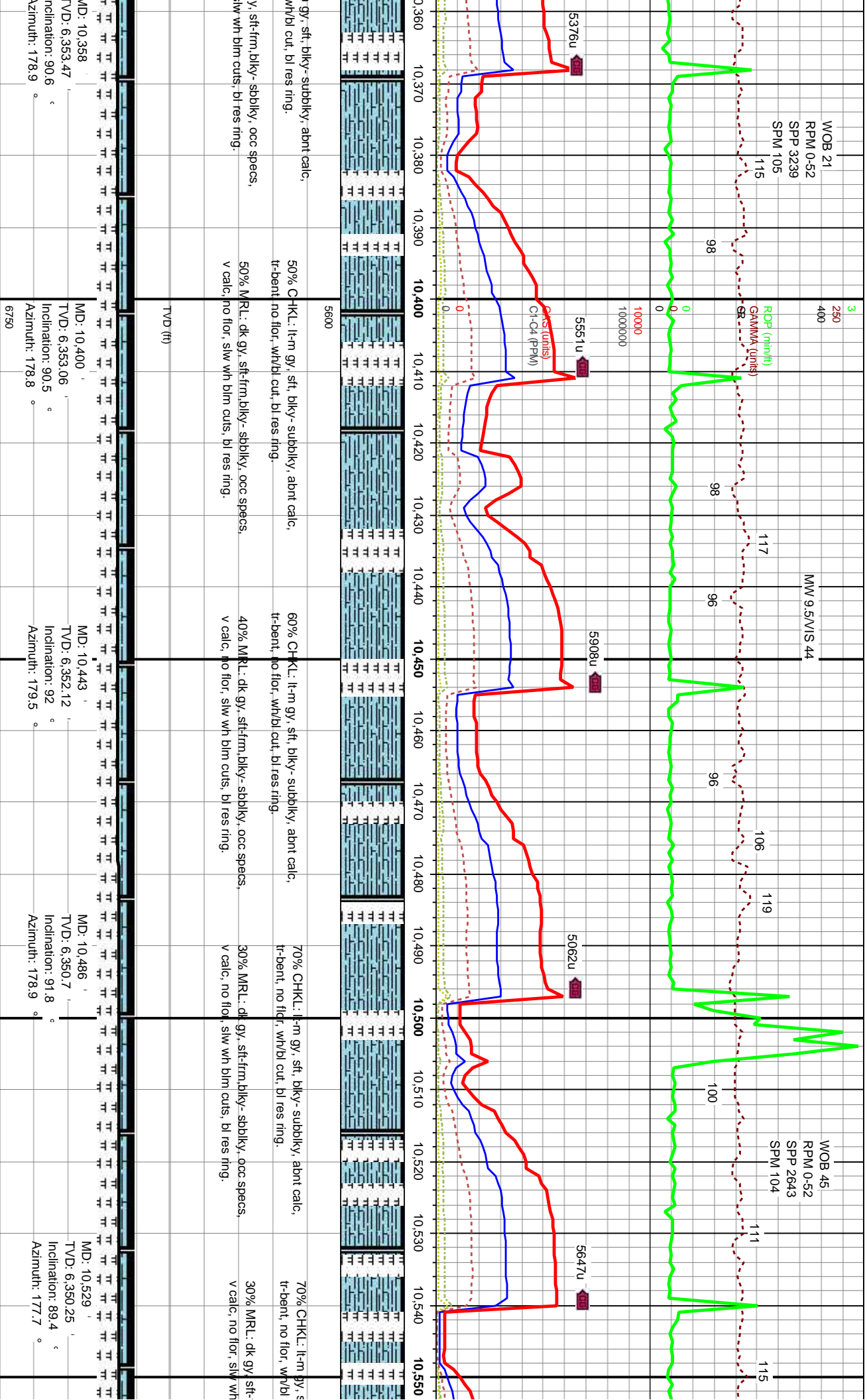












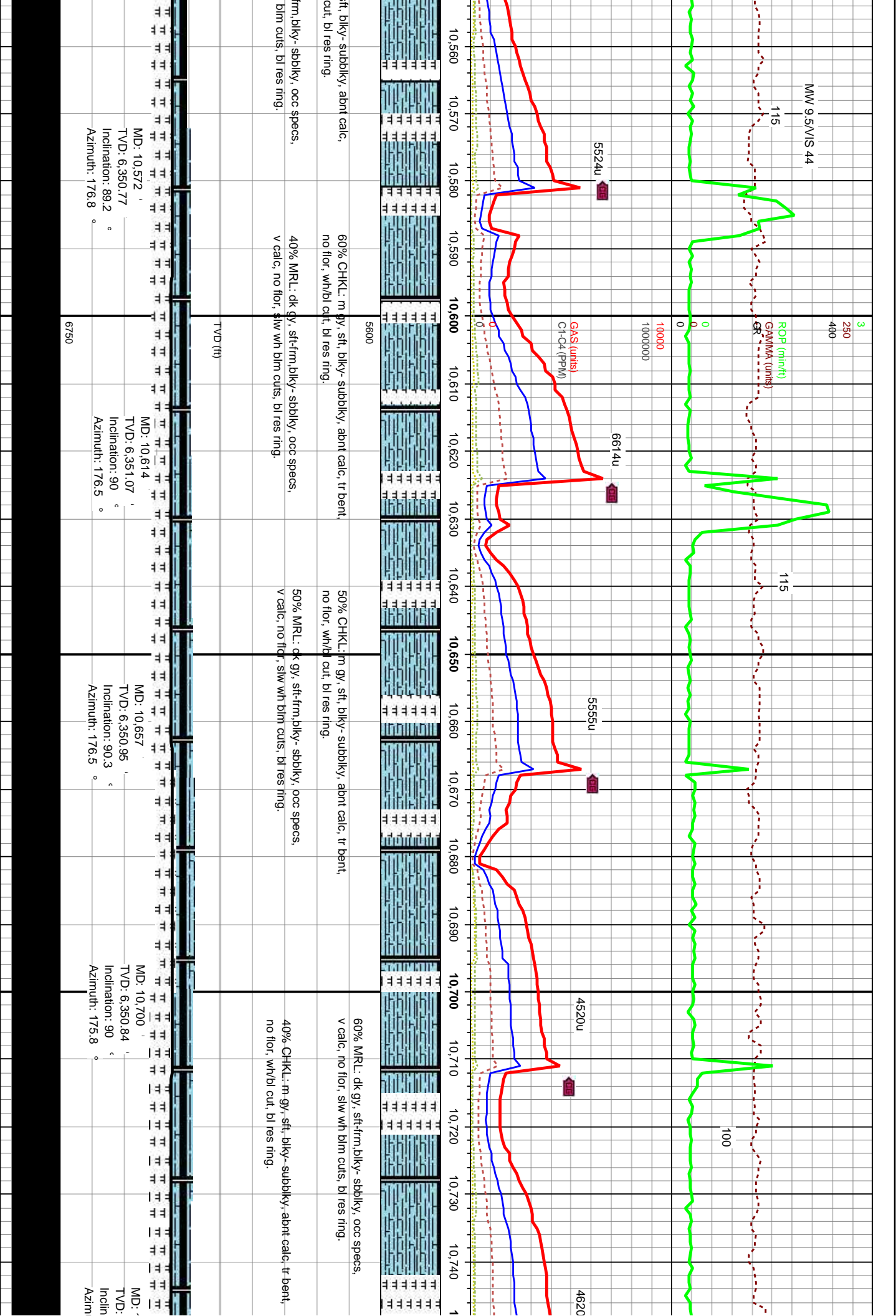
MD: 10,358
TVD: 6,353.47
Inclination: 90.6
Azimuth: 178.9

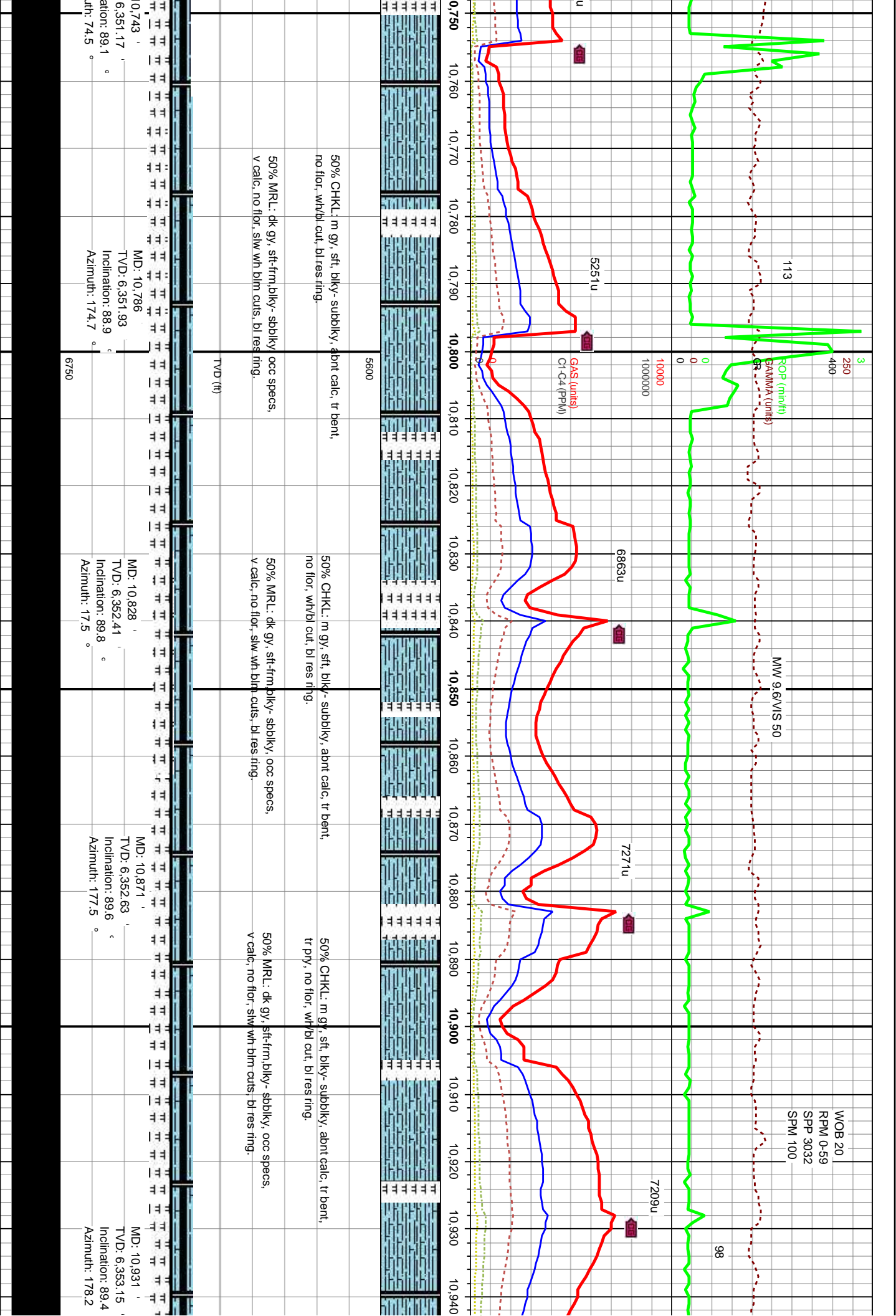
MD: 10,400 '
TVD: 6,353.06
Inclination: 90.5 °
Azimuth: 178.8 °

MD: 10,443
TVD: 6,352.12
Inclination: 92
Azimuth: 179.5

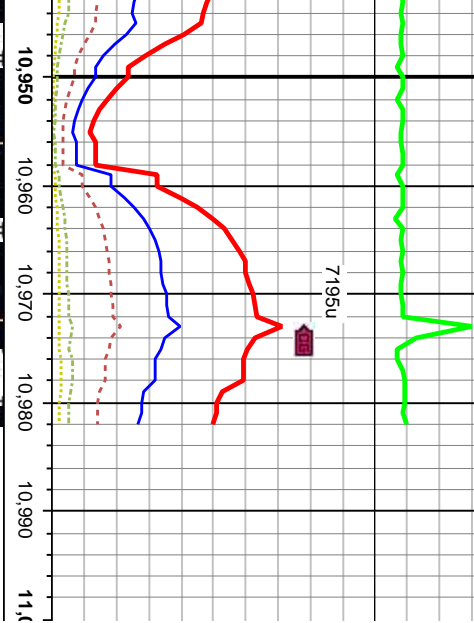
MD: 10,486
TVD: 6,350.7
Inclination: 91.8
Azimuth: 178.9

MD: 10,529
TVD: 6,350.25
Inclination: 89.4
Azimuth: 177.7 °





TD @ 10982'
03/28/2013 07:10 am



50% CHKL: m gy, sft, biky- subbiky, abnt calc, tr bent,
t pry, no flor, wtr/bl cut, bl res ring.

50% MRL: dk gy, sft-firm, biky- sbbiky, occ specs,
v calc, no flor, slw wth blm cuts, bl res ring.



MD: 10,982
TVD: 6,353.68
Inclination: 89.4 °
Azimuth: 178.2 °

