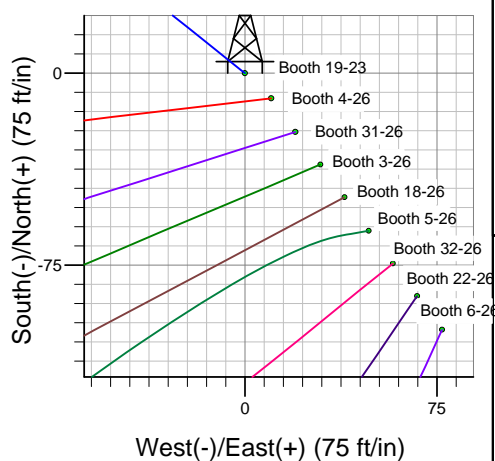
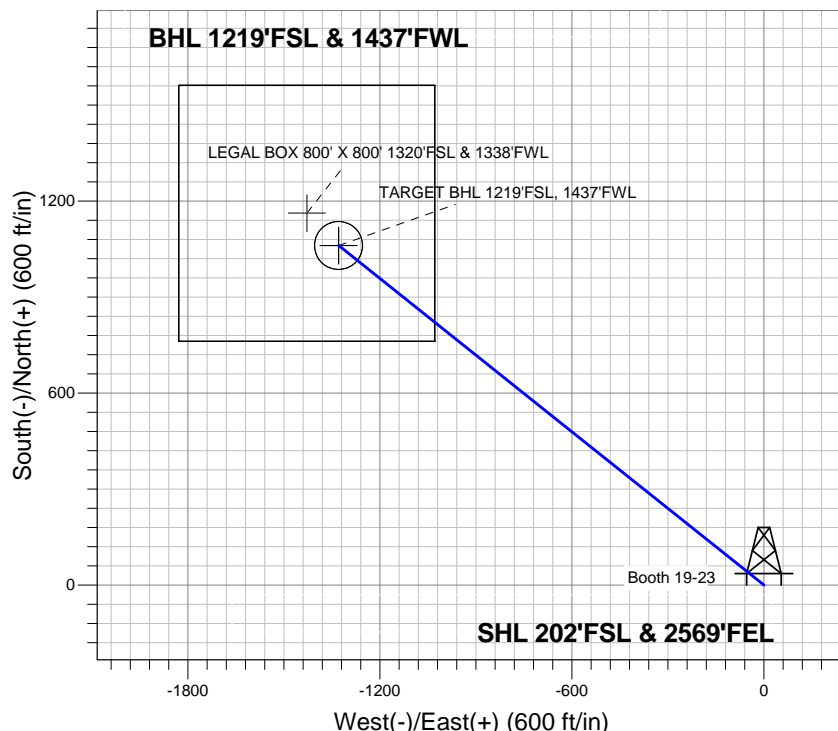
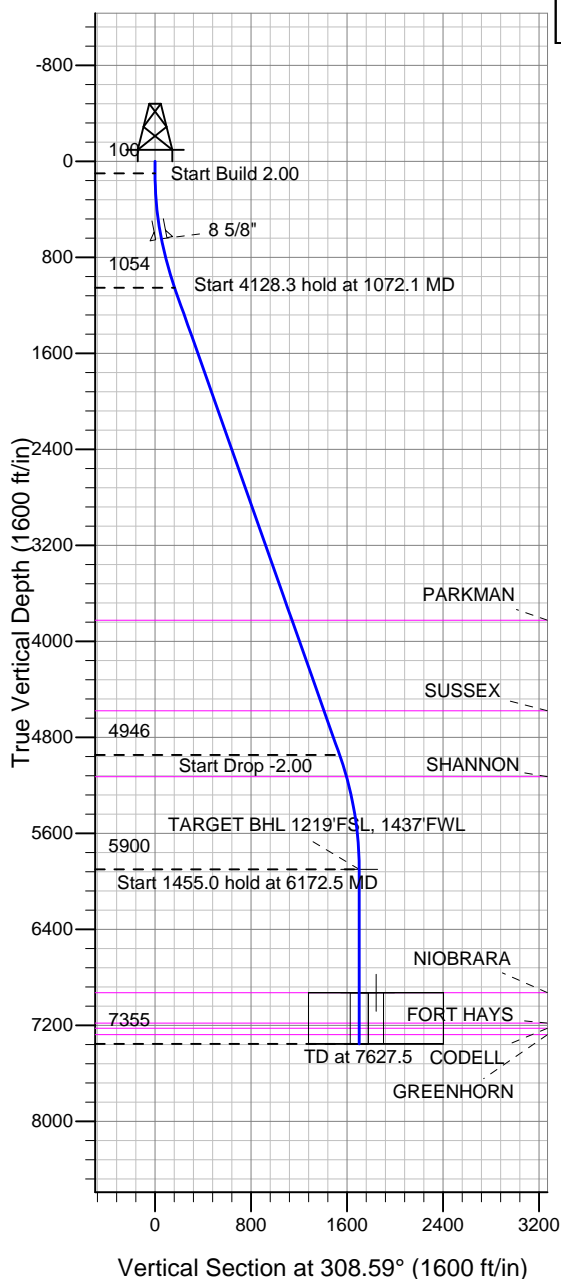


Bayswater Exploration & Production, LLC



Booth 19-23
 Plan #1 (5-02-13)
 13:30, May 02 2013



Azimuths to True North
 Magnetic North: 8.55°

Magnetic Field
 Strength: 53026.5nT
 Dip Angle: 67.13°
 Date: 5/2/2013
 Model: IGRF2010

WELLBORE TARGET DETAILS (LAT/LONG)

Name	TVD	+N/-S	+E/-W	Latitude	Longitude	Shape
TARGET BHL 1219'FSL, 1437'FWL	5900.0	1060.9	-1329.4	40.555231	-104.634581	Point
LEGAL BOX 800' X 800' 1320'FSL & 1338'FWL	6929.0	1161.9	-1428.4	40.555508	-104.634937	Rectangle (Sides: L800.0 W800.0)
TARGET CIRCLE 1219'FSL & 1437'FWL	6929.0	1060.9	-1329.4	40.555231	-104.634581	Circle (Radius: 75.0)

SECTION DETAILS

Sec	MD	Inc	Azi	TVD	+N/-S	+E/-W	DLeg	TFace	VSec	Target
1	0.0	0.00	0.00	0.0	0.0	0.0	0.00	0.00	0.0	
2	100.0	0.00	0.00	100.0	0.0	0.0	0.00	0.00	0.0	
3	1072.1	19.44	308.59	1053.6	101.9	-127.7	2.00	308.59	163.4	
4	5200.4	19.44	308.59	4946.4	959.0	-1201.7	0.00	0.00	1537.5	
5	6172.5	0.00	0.00	5900.0	1060.9	-1329.4	2.00	180.00	1700.8	TARGET BHL 1219'FSL, 1437'FWL
6	7627.5	0.00	0.00	7355.0	1060.9	-1329.4	0.00	0.00	1700.8	



Bayswater Exploration & Production, LLC

SEC.26-T7N-R65W

Booth 8 Pad Sec.26-T7N-R65W

Booth 19-23

Wellbore #1

Plan: Plan #1 (5-02-13)

Standard Planning Report

02 May, 2013



Database:	Landmark	Local Co-ordinate Reference:	Well Booth 19-23
Company:	Bayswater Exploration & Production, LLC	TVD Reference:	WELL @ 4900.0ft (Original Well Elev)
Project:	SEC.26-T7N-R65W	MD Reference:	WELL @ 4900.0ft (Original Well Elev)
Site:	Booth 8 Pad Sec.26-T7N-R65W	North Reference:	True
Well:	Booth 19-23	Survey Calculation Method:	Minimum Curvature
Wellbore:	Wellbore #1		
Design:	Plan #1 (5-02-13)		

Project	SEC.26-T7N-R65W, Weld County, CO		
Map System:	US State Plane 1983	System Datum:	Mean Sea Level
Geo Datum:	North American Datum 1983		Using Well Reference Point
Map Zone:	Colorado Northern Zone		Using geodetic scale factor

Site		Booth 8 Pad Sec.26-T7N-R65W			
Site Position:		Northing:	1,445,227.50ft	Latitude:	40.552292
From:	Lat/Long	Easting:	3,241,822.49ft	Longitude:	-104.629760
Position Uncertainty:	0.0 ft	Slot Radius:	"	Grid Convergence:	0.56 °

Well	Booth 19-23					
Well Position	+N-S	9.8 ft	Northing:	1,445,237.22 ft	Latitude:	40.552319
	+E-W	-10.3 ft	Easting:	3,241,812.12 ft	Longitude:	-104.629797
Position Uncertainty		0.0 ft	Wellhead Elevation:	ft	Ground Level:	4,884.0 ft

Wellbore	Wellbore #1				
Magnetics	Model Name	Sample Date	Declination (°)	Dip Angle (°)	Field Strength (nT)
	IGRF2010	5/2/2013	8.55	67.13	53,027

Design	Plan #1 (5-02-13)			
Audit Notes:				
Version:	Phase:	PROTOTYPE	Tie On Depth:	0.0
Vertical Section:	Depth From (TVD) (ft)	+N/-S (ft)	+E/-W (ft)	Direction (°)
	0.0	0.0	0.0	308.59

Plan Sections										
Measured Depth (ft)	Inclination (°)	Azimuth (°)	Vertical Depth (ft)	+N/-S (ft)	+E/-W (ft)	Dogleg Rate (°/100ft)	Build Rate (°/100ft)	Turn Rate (°/100ft)	TFO (°)	Target
0.0	0.00	0.00	0.0	0.0	0.0	0.00	0.00	0.00	0.00	
100.0	0.00	0.00	100.0	0.0	0.0	0.00	0.00	0.00	0.00	
1,072.1	19.44	308.59	1,053.6	101.9	-127.7	2.00	2.00	0.00	308.59	
5,200.4	19.44	308.59	4,946.4	959.0	-1,201.7	0.00	0.00	0.00	0.00	
6,172.5	0.00	0.00	5,900.0	1,060.9	-1,329.4	2.00	-2.00	0.00	180.00	TARGET BHL 1219
7,627.5	0.00	0.00	7,355.0	1,060.9	-1,329.4	0.00	0.00	0.00	0.00	

Database:	Landmark	Local Co-ordinate Reference:	Well Booth 19-23
Company:	Bayswater Exploration & Production, LLC	TVD Reference:	WELL @ 4900.0ft (Original Well Elev)
Project:	SEC.26-T7N-R65W	MD Reference:	WELL @ 4900.0ft (Original Well Elev)
Site:	Booth 8 Pad Sec.26-T7N-R65W	North Reference:	True
Well:	Booth 19-23	Survey Calculation Method:	Minimum Curvature
Wellbore:	Wellbore #1		
Design:	Plan #1 (5-02-13)		

Planned Survey									
Measured Depth (ft)	Inclination (°)	Azimuth (°)	Vertical Depth (ft)	+N/-S (ft)	+E/-W (ft)	Vertical Section (ft)	Dogleg Rate (°/100ft)	Build Rate (°/100ft)	Turn Rate (°/100ft)
0.0	0.00	0.00	0.0	0.0	0.0	0.0	0.00	0.00	0.00
40.0	0.00	0.00	40.0	0.0	0.0	0.0	0.00	0.00	0.00
80.0	0.00	0.00	80.0	0.0	0.0	0.0	0.00	0.00	0.00
100.0	0.00	0.00	100.0	0.0	0.0	0.0	0.00	0.00	0.00
120.0	0.40	308.59	120.0	0.0	-0.1	0.1	2.00	2.00	0.00
160.0	1.20	308.59	160.0	0.4	-0.5	0.6	2.00	2.00	0.00
200.0	2.00	308.59	200.0	1.1	-1.4	1.7	2.00	2.00	0.00
240.0	2.80	308.59	239.9	2.1	-2.7	3.4	2.00	2.00	0.00
280.0	3.60	308.59	279.9	3.5	-4.4	5.7	2.00	2.00	0.00
320.0	4.40	308.59	319.8	5.3	-6.6	8.4	2.00	2.00	0.00
360.0	5.20	308.59	359.6	7.4	-9.2	11.8	2.00	2.00	0.00
400.0	6.00	308.59	399.5	9.8	-12.3	15.7	2.00	2.00	0.00
440.0	6.80	308.59	439.2	12.6	-15.8	20.2	2.00	2.00	0.00
480.0	7.60	308.59	478.9	15.7	-19.7	25.2	2.00	2.00	0.00
520.0	8.40	308.59	518.5	19.2	-24.0	30.7	2.00	2.00	0.00
560.0	9.20	308.59	558.0	23.0	-28.8	36.9	2.00	2.00	0.00
600.0	10.00	308.59	597.5	27.1	-34.0	43.5	2.00	2.00	0.00
640.0	10.80	308.59	636.8	31.7	-39.7	50.7	2.00	2.00	0.00
648.3	10.97	308.59	645.0	32.6	-40.9	52.3	2.00	2.00	0.00
8 5/8"									
680.0	11.60	308.59	676.0	36.5	-45.7	58.5	2.00	2.00	0.00
720.0	12.40	308.59	715.2	41.7	-52.2	66.8	2.00	2.00	0.00
760.0	13.20	308.59	754.2	47.2	-59.2	75.7	2.00	2.00	0.00
800.0	14.00	308.59	793.1	53.1	-66.5	85.1	2.00	2.00	0.00
840.0	14.80	308.59	831.8	59.3	-74.3	95.0	2.00	2.00	0.00
880.0	15.60	308.59	870.4	65.8	-82.5	105.5	2.00	2.00	0.00
920.0	16.40	308.59	908.8	72.7	-91.1	116.6	2.00	2.00	0.00
960.0	17.20	308.59	947.1	79.9	-100.1	128.1	2.00	2.00	0.00
1,000.0	18.00	308.59	985.3	87.5	-109.6	140.2	2.00	2.00	0.00
1,040.0	18.80	308.59	1,023.2	95.3	-119.5	152.8	2.00	2.00	0.00
1,072.1	19.44	308.59	1,053.6	101.9	-127.7	163.4	2.00	2.00	0.00
1,080.0	19.44	308.59	1,061.0	103.5	-129.7	166.0	0.00	0.00	0.00
1,120.0	19.44	308.59	1,098.7	111.8	-140.1	179.3	0.00	0.00	0.00
1,160.0	19.44	308.59	1,136.4	120.1	-150.5	192.6	0.00	0.00	0.00
1,200.0	19.44	308.59	1,174.2	128.5	-161.0	205.9	0.00	0.00	0.00
1,240.0	19.44	308.59	1,211.9	136.8	-171.4	219.2	0.00	0.00	0.00
1,280.0	19.44	308.59	1,249.6	145.1	-181.8	232.6	0.00	0.00	0.00
1,320.0	19.44	308.59	1,287.3	153.4	-192.2	245.9	0.00	0.00	0.00
1,360.0	19.44	308.59	1,325.0	161.7	-202.6	259.2	0.00	0.00	0.00
1,400.0	19.44	308.59	1,362.8	170.0	-213.0	272.5	0.00	0.00	0.00
1,440.0	19.44	308.59	1,400.5	178.3	-223.4	285.8	0.00	0.00	0.00
1,480.0	19.44	308.59	1,438.2	186.6	-233.8	299.1	0.00	0.00	0.00
1,520.0	19.44	308.59	1,475.9	194.9	-244.2	312.4	0.00	0.00	0.00
1,560.0	19.44	308.59	1,513.6	203.2	-254.6	325.8	0.00	0.00	0.00
1,600.0	19.44	308.59	1,551.3	211.5	-265.0	339.1	0.00	0.00	0.00
1,640.0	19.44	308.59	1,589.1	219.8	-275.4	352.4	0.00	0.00	0.00
1,680.0	19.44	308.59	1,626.8	228.1	-285.8	365.7	0.00	0.00	0.00
1,720.0	19.44	308.59	1,664.5	236.4	-296.2	379.0	0.00	0.00	0.00
1,760.0	19.44	308.59	1,702.2	244.7	-306.6	392.3	0.00	0.00	0.00
1,800.0	19.44	308.59	1,739.9	253.0	-317.0	405.6	0.00	0.00	0.00
1,840.0	19.44	308.59	1,777.7	261.3	-327.5	419.0	0.00	0.00	0.00
1,880.0	19.44	308.59	1,815.4	269.6	-337.9	432.3	0.00	0.00	0.00
1,920.0	19.44	308.59	1,853.1	277.9	-348.3	445.6	0.00	0.00	0.00
1,960.0	19.44	308.59	1,890.8	286.3	-358.7	458.9	0.00	0.00	0.00

Database:	Landmark	Local Co-ordinate Reference:	Well Booth 19-23
Company:	Bayswater Exploration & Production, LLC	TVD Reference:	WELL @ 4900.0ft (Original Well Elev)
Project:	SEC.26-T7N-R65W	MD Reference:	WELL @ 4900.0ft (Original Well Elev)
Site:	Booth 8 Pad Sec.26-T7N-R65W	North Reference:	True
Well:	Booth 19-23	Survey Calculation Method:	Minimum Curvature
Wellbore:	Wellbore #1		
Design:	Plan #1 (5-02-13)		

Planned Survey									
Measured Depth (ft)	Inclination (°)	Azimuth (°)	Vertical Depth (ft)	+N/-S (ft)	+E/-W (ft)	Vertical Section (ft)	Dogleg Rate (°/100ft)	Build Rate (°/100ft)	Turn Rate (°/100ft)
2,000.0	19.44	308.59	1,928.5	294.6	-369.1	472.2	0.00	0.00	0.00
2,040.0	19.44	308.59	1,966.3	302.9	-379.5	485.5	0.00	0.00	0.00
2,080.0	19.44	308.59	2,004.0	311.2	-389.9	498.8	0.00	0.00	0.00
2,120.0	19.44	308.59	2,041.7	319.5	-400.3	512.2	0.00	0.00	0.00
2,160.0	19.44	308.59	2,079.4	327.8	-410.7	525.5	0.00	0.00	0.00
2,200.0	19.44	308.59	2,117.1	336.1	-421.1	538.8	0.00	0.00	0.00
2,240.0	19.44	308.59	2,154.9	344.4	-431.5	552.1	0.00	0.00	0.00
2,280.0	19.44	308.59	2,192.6	352.7	-441.9	565.4	0.00	0.00	0.00
2,320.0	19.44	308.59	2,230.3	361.0	-452.3	578.7	0.00	0.00	0.00
2,360.0	19.44	308.59	2,268.0	369.3	-462.7	592.0	0.00	0.00	0.00
2,400.0	19.44	308.59	2,305.7	377.6	-473.1	605.4	0.00	0.00	0.00
2,440.0	19.44	308.59	2,343.5	385.9	-483.6	618.7	0.00	0.00	0.00
2,480.0	19.44	308.59	2,381.2	394.2	-494.0	632.0	0.00	0.00	0.00
2,520.0	19.44	308.59	2,418.9	402.5	-504.4	645.3	0.00	0.00	0.00
2,560.0	19.44	308.59	2,456.6	410.8	-514.8	658.6	0.00	0.00	0.00
2,600.0	19.44	308.59	2,494.3	419.1	-525.2	671.9	0.00	0.00	0.00
2,640.0	19.44	308.59	2,532.0	427.4	-535.6	685.2	0.00	0.00	0.00
2,680.0	19.44	308.59	2,569.8	435.7	-546.0	698.6	0.00	0.00	0.00
2,720.0	19.44	308.59	2,607.5	444.0	-556.4	711.9	0.00	0.00	0.00
2,760.0	19.44	308.59	2,645.2	452.4	-566.8	725.2	0.00	0.00	0.00
2,800.0	19.44	308.59	2,682.9	460.7	-577.2	738.5	0.00	0.00	0.00
2,840.0	19.44	308.59	2,720.6	469.0	-587.6	751.8	0.00	0.00	0.00
2,880.0	19.44	308.59	2,758.4	477.3	-598.0	765.1	0.00	0.00	0.00
2,920.0	19.44	308.59	2,796.1	485.6	-608.4	778.4	0.00	0.00	0.00
2,960.0	19.44	308.59	2,833.8	493.9	-618.8	791.8	0.00	0.00	0.00
3,000.0	19.44	308.59	2,871.5	502.2	-629.2	805.1	0.00	0.00	0.00
3,040.0	19.44	308.59	2,909.2	510.5	-639.7	818.4	0.00	0.00	0.00
3,080.0	19.44	308.59	2,947.0	518.8	-650.1	831.7	0.00	0.00	0.00
3,120.0	19.44	308.59	2,984.7	527.1	-660.5	845.0	0.00	0.00	0.00
3,160.0	19.44	308.59	3,022.4	535.4	-670.9	858.3	0.00	0.00	0.00
3,200.0	19.44	308.59	3,060.1	543.7	-681.3	871.6	0.00	0.00	0.00
3,240.0	19.44	308.59	3,097.8	552.0	-691.7	885.0	0.00	0.00	0.00
3,280.0	19.44	308.59	3,135.6	560.3	-702.1	898.3	0.00	0.00	0.00
3,320.0	19.44	308.59	3,173.3	568.6	-712.5	911.6	0.00	0.00	0.00
3,360.0	19.44	308.59	3,211.0	576.9	-722.9	924.9	0.00	0.00	0.00
3,400.0	19.44	308.59	3,248.7	585.2	-733.3	938.2	0.00	0.00	0.00
3,440.0	19.44	308.59	3,286.4	593.5	-743.7	951.5	0.00	0.00	0.00
3,480.0	19.44	308.59	3,324.1	601.8	-754.1	964.8	0.00	0.00	0.00
3,520.0	19.44	308.59	3,361.9	610.2	-764.5	978.2	0.00	0.00	0.00
3,560.0	19.44	308.59	3,399.6	618.5	-774.9	991.5	0.00	0.00	0.00
3,600.0	19.44	308.59	3,437.3	626.8	-785.3	1,004.8	0.00	0.00	0.00
3,640.0	19.44	308.59	3,475.0	635.1	-795.7	1,018.1	0.00	0.00	0.00
3,680.0	19.44	308.59	3,512.7	643.4	-806.2	1,031.4	0.00	0.00	0.00
3,720.0	19.44	308.59	3,550.5	651.7	-816.6	1,044.7	0.00	0.00	0.00
3,760.0	19.44	308.59	3,588.2	660.0	-827.0	1,058.0	0.00	0.00	0.00
3,800.0	19.44	308.59	3,625.9	668.3	-837.4	1,071.4	0.00	0.00	0.00
3,840.0	19.44	308.59	3,663.6	676.6	-847.8	1,084.7	0.00	0.00	0.00
3,880.0	19.44	308.59	3,701.3	684.9	-858.2	1,098.0	0.00	0.00	0.00
3,920.0	19.44	308.59	3,739.1	693.2	-868.6	1,111.3	0.00	0.00	0.00
3,960.0	19.44	308.59	3,776.8	701.5	-879.0	1,124.6	0.00	0.00	0.00
4,000.0	19.44	308.59	3,814.5	709.8	-889.4	1,137.9	0.00	0.00	0.00
4,010.1	19.44	308.59	3,824.0	711.9	-892.0	1,141.3	0.00	0.00	0.00
PARKMAN									

Database:	Landmark	Local Co-ordinate Reference:	Well Booth 19-23
Company:	Bayswater Exploration & Production, LLC	TVD Reference:	WELL @ 4900.0ft (Original Well Elev)
Project:	SEC.26-T7N-R65W	MD Reference:	WELL @ 4900.0ft (Original Well Elev)
Site:	Booth 8 Pad Sec.26-T7N-R65W	North Reference:	True
Well:	Booth 19-23	Survey Calculation Method:	Minimum Curvature
Wellbore:	Wellbore #1		
Design:	Plan #1 (5-02-13)		

Planned Survey									
Measured Depth (ft)	Inclination (°)	Azimuth (°)	Vertical Depth (ft)	+N/-S (ft)	+E/-W (ft)	Vertical Section (ft)	Dogleg Rate (°/100ft)	Build Rate (°/100ft)	Turn Rate (°/100ft)
4,040.0	19.44	308.59	3,852.2	718.1	-899.8	1,151.2	0.00	0.00	0.00
4,080.0	19.44	308.59	3,889.9	726.4	-910.2	1,164.6	0.00	0.00	0.00
4,120.0	19.44	308.59	3,927.7	734.7	-920.6	1,177.9	0.00	0.00	0.00
4,160.0	19.44	308.59	3,965.4	743.0	-931.0	1,191.2	0.00	0.00	0.00
4,200.0	19.44	308.59	4,003.1	751.3	-941.4	1,204.5	0.00	0.00	0.00
4,240.0	19.44	308.59	4,040.8	759.6	-951.8	1,217.8	0.00	0.00	0.00
4,280.0	19.44	308.59	4,078.5	768.0	-962.3	1,231.1	0.00	0.00	0.00
4,320.0	19.44	308.59	4,116.2	776.3	-972.7	1,244.4	0.00	0.00	0.00
4,360.0	19.44	308.59	4,154.0	784.6	-983.1	1,257.8	0.00	0.00	0.00
4,400.0	19.44	308.59	4,191.7	792.9	-993.5	1,271.1	0.00	0.00	0.00
4,440.0	19.44	308.59	4,229.4	801.2	-1,003.9	1,284.4	0.00	0.00	0.00
4,480.0	19.44	308.59	4,267.1	809.5	-1,014.3	1,297.7	0.00	0.00	0.00
4,520.0	19.44	308.59	4,304.8	817.8	-1,024.7	1,311.0	0.00	0.00	0.00
4,560.0	19.44	308.59	4,342.6	826.1	-1,035.1	1,324.3	0.00	0.00	0.00
4,600.0	19.44	308.59	4,380.3	834.4	-1,045.5	1,337.6	0.00	0.00	0.00
4,640.0	19.44	308.59	4,418.0	842.7	-1,055.9	1,351.0	0.00	0.00	0.00
4,680.0	19.44	308.59	4,455.7	851.0	-1,066.3	1,364.3	0.00	0.00	0.00
4,720.0	19.44	308.59	4,493.4	859.3	-1,076.7	1,377.6	0.00	0.00	0.00
4,760.0	19.44	308.59	4,531.2	867.6	-1,087.1	1,390.9	0.00	0.00	0.00
4,800.0	19.44	308.59	4,568.9	875.9	-1,097.5	1,404.2	0.00	0.00	0.00
4,810.7	19.44	308.59	4,579.0	878.1	-1,100.3	1,407.8	0.00	0.00	0.00
SUSSEX									
4,840.0	19.44	308.59	4,606.6	884.2	-1,107.9	1,417.5	0.00	0.00	0.00
4,880.0	19.44	308.59	4,644.3	892.5	-1,118.3	1,430.8	0.00	0.00	0.00
4,920.0	19.44	308.59	4,682.0	900.8	-1,128.8	1,444.2	0.00	0.00	0.00
4,960.0	19.44	308.59	4,719.8	909.1	-1,139.2	1,457.5	0.00	0.00	0.00
5,000.0	19.44	308.59	4,757.5	917.4	-1,149.6	1,470.8	0.00	0.00	0.00
5,040.0	19.44	308.59	4,795.2	925.7	-1,160.0	1,484.1	0.00	0.00	0.00
5,080.0	19.44	308.59	4,832.9	934.1	-1,170.4	1,497.4	0.00	0.00	0.00
5,120.0	19.44	308.59	4,870.6	942.4	-1,180.8	1,510.7	0.00	0.00	0.00
5,160.0	19.44	308.59	4,908.3	950.7	-1,191.2	1,524.0	0.00	0.00	0.00
5,200.0	19.44	308.59	4,946.1	959.0	-1,201.6	1,537.4	0.00	0.00	0.00
5,200.4	19.44	308.59	4,946.4	959.0	-1,201.7	1,537.5	0.00	0.00	0.00
5,240.0	18.65	308.59	4,983.9	967.1	-1,211.8	1,550.4	2.00	-2.00	0.00
5,280.0	17.85	308.59	5,021.9	974.9	-1,221.6	1,562.9	2.00	-2.00	0.00
5,320.0	17.05	308.59	5,060.0	982.4	-1,231.0	1,574.9	2.00	-2.00	0.00
5,360.0	16.25	308.59	5,098.3	989.6	-1,239.9	1,586.4	2.00	-2.00	0.00
5,391.9	15.61	308.59	5,129.0	995.0	-1,246.8	1,595.1	2.00	-2.00	0.00
SHANNON									
5,400.0	15.45	308.59	5,136.8	996.4	-1,248.5	1,597.3	2.00	-2.00	0.00
5,440.0	14.65	308.59	5,175.5	1,002.9	-1,256.6	1,607.7	2.00	-2.00	0.00
5,480.0	13.85	308.59	5,214.2	1,009.0	-1,264.3	1,617.6	2.00	-2.00	0.00
5,520.0	13.05	308.59	5,253.1	1,014.8	-1,271.6	1,626.9	2.00	-2.00	0.00
5,560.0	12.25	308.59	5,292.2	1,020.3	-1,278.4	1,635.6	2.00	-2.00	0.00
5,600.0	11.45	308.59	5,331.3	1,025.4	-1,284.8	1,643.8	2.00	-2.00	0.00
5,640.0	10.65	308.59	5,370.6	1,030.2	-1,290.8	1,651.5	2.00	-2.00	0.00
5,680.0	9.85	308.59	5,409.9	1,034.6	-1,296.4	1,658.6	2.00	-2.00	0.00
5,720.0	9.05	308.59	5,449.4	1,038.7	-1,301.5	1,665.2	2.00	-2.00	0.00
5,760.0	8.25	308.59	5,488.9	1,042.5	-1,306.2	1,671.2	2.00	-2.00	0.00
5,800.0	7.45	308.59	5,528.5	1,045.9	-1,310.5	1,676.7	2.00	-2.00	0.00
5,840.0	6.65	308.59	5,568.2	1,048.9	-1,314.3	1,681.6	2.00	-2.00	0.00
5,880.0	5.85	308.59	5,608.0	1,051.6	-1,317.7	1,685.9	2.00	-2.00	0.00
5,920.0	5.05	308.59	5,647.8	1,054.0	-1,320.7	1,689.7	2.00	-2.00	0.00
5,960.0	4.25	308.59	5,687.7	1,056.0	-1,323.2	1,693.0	2.00	-2.00	0.00

Database:	Landmark	Local Co-ordinate Reference:	Well Booth 19-23
Company:	Bayswater Exploration & Production, LLC	TVD Reference:	WELL @ 4900.0ft (Original Well Elev)
Project:	SEC.26-T7N-R65W	MD Reference:	WELL @ 4900.0ft (Original Well Elev)
Site:	Booth 8 Pad Sec.26-T7N-R65W	North Reference:	True
Well:	Booth 19-23	Survey Calculation Method:	Minimum Curvature
Wellbore:	Wellbore #1		
Design:	Plan #1 (5-02-13)		

Planned Survey										
Measured Depth (ft)	Inclination (°)	Azimuth (°)	Vertical Depth (ft)	+N/-S (ft)	+E/-W (ft)	Vertical Section (ft)	Dogleg Rate (°/100ft)	Build Rate (°/100ft)	Turn Rate (°/100ft)	
6,000.0	3.45	308.59	5,727.6	1,057.7	-1,325.3	1,695.7	2.00	-2.00	0.00	
6,040.0	2.65	308.59	5,767.5	1,059.0	-1,327.0	1,697.8	2.00	-2.00	0.00	
6,080.0	1.85	308.59	5,807.5	1,060.0	-1,328.2	1,699.4	2.00	-2.00	0.00	
6,120.0	1.05	308.59	5,847.5	1,060.6	-1,329.0	1,700.4	2.00	-2.00	0.00	
6,160.0	0.25	308.59	5,887.5	1,060.9	-1,329.4	1,700.8	2.00	-2.00	0.00	
6,172.5	0.00	0.00	5,900.0	1,060.9	-1,329.4	1,700.8	2.00	-2.00	0.00	
TARGET BHL 1219'FSL, 1437'FWL										
6,200.0	0.00	0.00	5,927.5	1,060.9	-1,329.4	1,700.8	0.00	0.00	0.00	
6,240.0	0.00	0.00	5,967.5	1,060.9	-1,329.4	1,700.8	0.00	0.00	0.00	
6,280.0	0.00	0.00	6,007.5	1,060.9	-1,329.4	1,700.8	0.00	0.00	0.00	
6,320.0	0.00	0.00	6,047.5	1,060.9	-1,329.4	1,700.8	0.00	0.00	0.00	
6,360.0	0.00	0.00	6,087.5	1,060.9	-1,329.4	1,700.8	0.00	0.00	0.00	
6,400.0	0.00	0.00	6,127.5	1,060.9	-1,329.4	1,700.8	0.00	0.00	0.00	
6,440.0	0.00	0.00	6,167.5	1,060.9	-1,329.4	1,700.8	0.00	0.00	0.00	
6,480.0	0.00	0.00	6,207.5	1,060.9	-1,329.4	1,700.8	0.00	0.00	0.00	
6,520.0	0.00	0.00	6,247.5	1,060.9	-1,329.4	1,700.8	0.00	0.00	0.00	
6,560.0	0.00	0.00	6,287.5	1,060.9	-1,329.4	1,700.8	0.00	0.00	0.00	
6,600.0	0.00	0.00	6,327.5	1,060.9	-1,329.4	1,700.8	0.00	0.00	0.00	
6,640.0	0.00	0.00	6,367.5	1,060.9	-1,329.4	1,700.8	0.00	0.00	0.00	
6,680.0	0.00	0.00	6,407.5	1,060.9	-1,329.4	1,700.8	0.00	0.00	0.00	
6,720.0	0.00	0.00	6,447.5	1,060.9	-1,329.4	1,700.8	0.00	0.00	0.00	
6,760.0	0.00	0.00	6,487.5	1,060.9	-1,329.4	1,700.8	0.00	0.00	0.00	
6,800.0	0.00	0.00	6,527.5	1,060.9	-1,329.4	1,700.8	0.00	0.00	0.00	
6,840.0	0.00	0.00	6,567.5	1,060.9	-1,329.4	1,700.8	0.00	0.00	0.00	
6,880.0	0.00	0.00	6,607.5	1,060.9	-1,329.4	1,700.8	0.00	0.00	0.00	
6,920.0	0.00	0.00	6,647.5	1,060.9	-1,329.4	1,700.8	0.00	0.00	0.00	
6,960.0	0.00	0.00	6,687.5	1,060.9	-1,329.4	1,700.8	0.00	0.00	0.00	
7,000.0	0.00	0.00	6,727.5	1,060.9	-1,329.4	1,700.8	0.00	0.00	0.00	
7,040.0	0.00	0.00	6,767.5	1,060.9	-1,329.4	1,700.8	0.00	0.00	0.00	
7,080.0	0.00	0.00	6,807.5	1,060.9	-1,329.4	1,700.8	0.00	0.00	0.00	
7,120.0	0.00	0.00	6,847.5	1,060.9	-1,329.4	1,700.8	0.00	0.00	0.00	
7,160.0	0.00	0.00	6,887.5	1,060.9	-1,329.4	1,700.8	0.00	0.00	0.00	
7,200.0	0.00	0.00	6,927.5	1,060.9	-1,329.4	1,700.8	0.00	0.00	0.00	
7,201.5	0.00	0.00	6,929.0	1,060.9	-1,329.4	1,700.8	0.00	0.00	0.00	
NIOBRARA - LEGAL BOX 800' X 800' 1320'FSL & 1338'FWL - TARGET CIRCLE 1219'FSL & 1437'FWL										
7,240.0	0.00	0.00	6,967.5	1,060.9	-1,329.4	1,700.8	0.00	0.00	0.00	
7,280.0	0.00	0.00	7,007.5	1,060.9	-1,329.4	1,700.8	0.00	0.00	0.00	
7,320.0	0.00	0.00	7,047.5	1,060.9	-1,329.4	1,700.8	0.00	0.00	0.00	
7,360.0	0.00	0.00	7,087.5	1,060.9	-1,329.4	1,700.8	0.00	0.00	0.00	
7,400.0	0.00	0.00	7,127.5	1,060.9	-1,329.4	1,700.8	0.00	0.00	0.00	
7,440.0	0.00	0.00	7,167.5	1,060.9	-1,329.4	1,700.8	0.00	0.00	0.00	
7,453.5	0.00	0.00	7,181.0	1,060.9	-1,329.4	1,700.8	0.00	0.00	0.00	
FORT HAYS										
7,480.0	0.00	0.00	7,207.5	1,060.9	-1,329.4	1,700.8	0.00	0.00	0.00	
7,497.5	0.00	0.00	7,225.0	1,060.9	-1,329.4	1,700.8	0.00	0.00	0.00	
CODELL										
7,520.0	0.00	0.00	7,247.5	1,060.9	-1,329.4	1,700.8	0.00	0.00	0.00	
7,549.5	0.00	0.00	7,277.0	1,060.9	-1,329.4	1,700.8	0.00	0.00	0.00	
GREENHORN										
7,560.0	0.00	0.00	7,287.5	1,060.9	-1,329.4	1,700.8	0.00	0.00	0.00	
7,600.0	0.00	0.00	7,327.5	1,060.9	-1,329.4	1,700.8	0.00	0.00	0.00	
7,627.5	0.00	0.00	7,355.0	1,060.9	-1,329.4	1,700.8	0.00	0.00	0.00	

Database:	Landmark	Local Co-ordinate Reference:	Well Booth 19-23
Company:	Bayswater Exploration & Production, LLC	TVD Reference:	WELL @ 4900.0ft (Original Well Elev)
Project:	SEC.26-T7N-R65W	MD Reference:	WELL @ 4900.0ft (Original Well Elev)
Site:	Booth 8 Pad Sec.26-T7N-R65W	North Reference:	True
Well:	Booth 19-23	Survey Calculation Method:	Minimum Curvature
Wellbore:	Wellbore #1		
Design:	Plan #1 (5-02-13)		

Targets									
Target Name									
- hit/miss target	Dip Angle	Dip Dir.	TVD	+N/-S	+E/-W	Northing	Easting	Latitude	Longitude
- Shape	(°)	(°)	(ft)	(ft)	(ft)	(ft)	(ft)		
TARGET BHL 1219'F: - plan hits target center - Point	0.00	0.00	5,900.0	1,060.9	-1,329.4	1,446,285.04	3,240,472.43	40.555231	-104.634581
LEGAL BOX 800' X 800' - plan misses target center by 141.4ft at 7201.5ft MD (6929.0 TVD, 1060.9 N, -1329.4 E) - Rectangle (sides W800.0 H800.0 D426.0)	0.00	0.00	6,929.0	1,161.9	-1,428.4	1,446,385.01	3,240,372.43	40.555508	-104.634937
TARGET CIRCLE 121 - plan hits target center - Circle (radius 75.0)	0.00	0.00	6,929.0	1,060.9	-1,329.4	1,446,285.04	3,240,472.43	40.555231	-104.634581

Casing Points				
Measured Depth (ft)	Vertical Depth (ft)	Name	Casing Diameter (")	Hole Diameter (")
648.3	645.0	8 5/8"	8-5/8	12-1/4

Formations					
Measured Depth (ft)	Vertical Depth (ft)	Name	Lithology	Dip (°)	Dip Direction (°)
4,010.1	3,824.0	PARKMAN		0.00	
4,810.7	4,579.0	SUSSEX		0.00	
5,391.9	5,129.0	SHANNON		0.00	
7,201.5	6,929.0	NIOBRARA		0.00	
7,453.5	7,181.0	FORT HAYS		0.00	
7,497.5	7,225.0	CODELL		0.00	
7,549.5	7,277.0	GREENHORN		0.00	



Directional

Bayswater Exploration & Production, LLC

SEC.26-T7N-R65W

Booth 8 Pad Sec.26-T7N-R65W

Booth 19-23

Wellbore #1

Plan #1 (5-02-13)

Anticollision Report

02 May, 2013



Directional

Company:	Bayswater Exploration & Production, LLC	Local Co-ordinate Reference:	Well Booth 19-23
Project:	SEC.26-T7N-R65W	TVD Reference:	WELL @ 4900.0ft (Original Well Elev)
Reference Site:	Booth 8 Pad Sec.26-T7N-R65W	MD Reference:	WELL @ 4900.0ft (Original Well Elev)
Site Error:	0.0ft	North Reference:	True
Reference Well:	Booth 19-23	Survey Calculation Method:	Minimum Curvature
Well Error:	0.0ft	Output errors are at	2.00 sigma
Reference Wellbore	Wellbore #1	Database:	Landmark
Reference Design:	Plan #1 (5-02-13)	Offset TVD Reference:	Offset Datum

Reference	Plan #1 (5-02-13)		
Filter type:	NO GLOBAL FILTER: Using user defined selection & filtering criteria		
Interpolation Method:	Stations	Error Model:	ISCWSA
Depth Range:	Unlimited	Scan Method:	Closest Approach 3D
Results Limited by:	Maximum center-center distance of 1,000.0ft	Error Surface:	Elliptical Conic
Warning Levels Evaluated at:	2.00 Sigma		

Survey Tool Program	Date 5/2/2013			
From (ft)	To (ft)	Survey (Wellbore)	Tool Name	Description
0.0	7,627.5	Plan #1 (5-02-13) (Wellbore #1)	MWD	MWD - Standard

Summary						
Site Name	Reference Measured Depth (ft)	Offset Measured Depth (ft)	Distance Between Centres (ft)	Distance Between Ellipses (ft)	Separation Factor	Warning
Offset Well - Wellbore - Design						
Booth 8 Pad Sec.26-T7N-R65W						
Booth 31-26 - Wellbore #1 - Plan #1 (5-22-12)	100.0	109.0	30.3	30.0	123.542	CC, ES
Booth 31-26 - Wellbore #1 - Plan #1 (5-22-12)	700.0	707.6	79.9	76.5	23.897	SF
Booth 4-26 - Wellbore #1 - Plan #1 (5-22-12)	115.8	124.9	14.2	13.9	45.031	CC, ES
Booth 4-26 - Wellbore #1 - Plan #1 (5-22-12)	400.0	409.4	22.4	20.7	13.351	SF

Offset Design		Booth 8 Pad Sec.26-T7N-R65W - Booth 31-26 - Wellbore #1 - Plan #1 (5-22-12)										Offset Site Error:		0.0 ft		
Survey Program: 0-MWD														Offset Well Error:		0.0 ft
Reference		Offset		Semi Major Axis			Distance									
Measured Depth (ft)	Vertical Depth (ft)	Measured Depth (ft)	Vertical Depth (ft)	Reference (ft)	Offset (ft)	Highside Toolface (°)	Offset Wellbore Centre +N/-S (ft)	+E/-W (ft)	Between Centres (ft)	Between Ellipses (ft)	Minimum Separation (ft)	Separation Factor	Warning			
0.0	0.0	9.0	9.0	0.0	0.0	139.32	-23.0	19.7	30.3	30.3	0.01	2,939.559				
100.0	100.0	109.0	109.0	0.1	0.1	139.32	-23.0	19.7	30.3	30.0	0.24	123.542	CC, ES			
200.0	200.0	209.0	209.0	0.3	0.4	-169.83	-23.0	19.7	32.0	31.3	0.70	45.489				
300.0	299.8	309.4	309.4	0.6	0.6	-168.28	-23.6	17.7	36.3	35.2	1.15	31.565				
400.0	399.5	409.6	409.4	0.8	0.8	-163.70	-25.3	12.4	42.9	41.3	1.61	26.639				
500.0	498.7	509.5	508.9	1.1	1.0	-157.89	-28.0	3.8	52.1	50.0	2.12	24.629				
600.0	597.5	608.8	607.5	1.5	1.3	-152.11	-31.8	-8.0	64.4	61.7	2.69	23.950				
700.0	695.6	707.6	705.0	1.9	1.7	-146.97	-36.5	-23.0	79.9	76.5	3.34	23.897	SF			
800.0	793.1	805.6	801.1	2.3	2.1	-142.63	-42.2	-41.0	98.7	94.6	4.09	24.125				
900.0	889.6	902.6	895.6	2.8	2.5	-139.05	-48.9	-62.0	120.7	115.8	4.94	24.460				
1,000.0	985.3	998.6	988.3	3.4	3.0	-136.08	-56.4	-85.7	146.0	140.1	5.88	24.814				
1,072.1	1,053.6	1,067.2	1,054.0	3.9	3.4	-134.25	-62.4	-104.4	166.1	159.5	6.64	25.035				
1,100.0	1,079.9	1,093.5	1,079.1	4.1	3.6	-133.69	-64.8	-112.0	174.2	167.3	6.93	25.127				
1,200.0	1,174.2	1,187.5	1,168.0	4.7	4.2	-131.48	-73.9	-140.9	203.9	195.9	8.08	25.235				
1,300.0	1,268.5	1,280.5	1,255.1	5.4	4.8	-129.09	-83.9	-172.2	234.6	225.3	9.30	25.220				
1,400.0	1,362.8	1,372.5	1,340.0	6.1	5.6	-126.62	-94.5	-205.8	266.5	255.9	10.59	25.174				
1,500.0	1,457.1	1,463.1	1,422.6	6.8	6.3	-124.14	-105.8	-241.4	299.8	287.8	11.92	25.145				
1,600.0	1,551.3	1,552.4	1,502.7	7.5	7.1	-121.69	-117.8	-278.9	334.5	321.3	13.29	25.173				
1,700.0	1,645.6	1,640.1	1,580.2	8.2	8.0	-119.31	-130.2	-318.1	371.0	356.3	14.68	25.274				
1,800.0	1,739.9	1,730.4	1,659.1	8.8	8.9	-117.02	-143.5	-360.0	408.8	392.7	16.11	25.373				
1,900.0	1,834.2	1,821.8	1,738.9	9.5	9.9	-115.08	-157.0	-402.4	447.2	429.6	17.54	25.493				
2,000.0	1,928.5	1,913.2	1,818.7	10.2	10.9	-113.44	-170.4	-444.9	485.9	466.9	18.96	25.630				
2,100.0	2,022.8	2,004.5	1,898.4	10.9	11.8	-112.04	-183.9	-487.3	524.9	504.5	20.36	25.775				

CC - Min centre to center distance or convergent point, SF - min separation factor, ES - min ellipse separation

Company:	Bayswater Exploration & Production, LLC	Local Co-ordinate Reference:	Well Booth 19-23
Project:	SEC.26-T7N-R65W	TVD Reference:	WELL @ 4900.0ft (Original Well Elev)
Reference Site:	Booth 8 Pad Sec.26-T7N-R65W	MD Reference:	WELL @ 4900.0ft (Original Well Elev)
Site Error:	0.0ft	North Reference:	True
Reference Well:	Booth 19-23	Survey Calculation Method:	Minimum Curvature
Well Error:	0.0ft	Output errors are at	2.00 sigma
Reference Wellbore	Wellbore #1	Database:	Landmark
Reference Design:	Plan #1 (5-02-13)	Offset TVD Reference:	Offset Datum

Offset Design Booth 8 Pad Sec.26-T7N-R65W - Booth 31-26 - Wellbore #1 - Plan #1 (5-22-12)												Offset Site Error:	0.0 ft
Survey Program: 0-MWD												Offset Well Error:	0.0 ft
Reference		Offset		Semi Major Axis			Distance						
Measured Depth (ft)	Vertical Depth (ft)	Measured Depth (ft)	Vertical Depth (ft)	Reference (ft)	Offset (ft)	Highside Toolface (°)	Offset Wellbore Centre +N/-S (ft)	+E/-W (ft)	Between Centres (ft)	Between Ellipses (ft)	Minimum Separation (ft)	Separation Factor	Warning
2,200.0	2,117.1	2,095.9	1,978.2	11.6	12.8	-110.83	-197.4	-529.8	564.2	542.4	21.76	25.921	
2,300.0	2,211.4	2,187.3	2,058.0	12.3	13.7	-109.78	-210.9	-572.2	603.6	580.4	23.16	26.064	
2,400.0	2,305.7	2,278.6	2,137.8	13.0	14.7	-108.86	-224.3	-614.7	643.2	618.6	24.55	26.202	
2,500.0	2,400.0	2,370.0	2,217.5	13.7	15.7	-108.04	-237.8	-657.1	682.9	657.0	25.93	26.335	
2,600.0	2,494.3	2,461.3	2,297.3	14.4	16.7	-107.31	-251.3	-699.6	722.7	695.4	27.31	26.462	
2,700.0	2,588.6	2,552.7	2,377.1	15.1	17.6	-106.66	-264.7	-742.0	762.6	733.9	28.69	26.582	
2,800.0	2,682.9	2,644.1	2,456.9	15.8	18.6	-106.07	-278.2	-784.4	802.6	772.5	30.06	26.696	
2,900.0	2,777.2	2,735.4	2,536.6	16.5	19.6	-105.54	-291.7	-826.9	842.6	811.2	31.44	26.804	
3,000.0	2,871.5	2,826.8	2,616.4	17.2	20.6	-105.06	-305.2	-869.3	882.7	849.9	32.81	26.907	
3,100.0	2,965.8	2,918.1	2,696.2	17.9	21.5	-104.61	-318.6	-911.8	922.9	888.7	34.18	27.003	
3,200.0	3,060.1	3,009.5	2,775.9	18.6	22.5	-104.21	-332.1	-954.2	963.1	927.5	35.54	27.095	

Company:	Bayswater Exploration & Production, LLC	Local Co-ordinate Reference:	Well Booth 19-23
Project:	SEC.26-T7N-R65W	TVD Reference:	WELL @ 4900.0ft (Original Well Elev)
Reference Site:	Booth 8 Pad Sec.26-T7N-R65W	MD Reference:	WELL @ 4900.0ft (Original Well Elev)
Site Error:	0.0ft	North Reference:	True
Reference Well:	Booth 19-23	Survey Calculation Method:	Minimum Curvature
Well Error:	0.0ft	Output errors are at	2.00 sigma
Reference Wellbore	Wellbore #1	Database:	Landmark
Reference Design:	Plan #1 (5-02-13)	Offset TVD Reference:	Offset Datum

Offset Design Booth 8 Pad Sec.26-T7N-R65W - Booth 4-26 - Wellbore #1 - Plan #1 (5-22-12)												Offset Site Error:	0.0 ft
Survey Program: 0-MWD												Offset Well Error:	0.0 ft
Reference		Offset		Semi Major Axis			Distance						
Measured Depth (ft)	Vertical Depth (ft)	Measured Depth (ft)	Vertical Depth (ft)	Reference (ft)	Offset (ft)	Highside Toolface (°)	Offset Wellbore Centre +N/-S (ft)	+E/-W (ft)	Between Centres (ft)	Between Ellipses (ft)	Minimum Separation (ft)	Separation Factor	Warning
0.0	0.0	9.0	9.0	0.0	0.0	133.72	-9.8	10.3	14.2	14.2	0.01	1,381.716	
100.0	100.0	109.0	109.0	0.1	0.1	133.76	-9.8	10.3	14.2	14.0	0.24	58.203	
115.8	115.8	124.9	124.9	0.1	0.2	-174.55	-9.8	10.2	14.2	13.9	0.32	45.031 CC, ES	
200.0	200.0	209.3	209.3	0.3	0.4	-169.21	-10.1	8.2	14.7	14.0	0.69	21.247	
300.0	299.8	309.5	309.3	0.6	0.6	-156.93	-10.7	2.7	17.1	16.0	1.16	14.781	
400.0	399.5	409.4	408.8	0.8	0.9	-143.97	-11.8	-6.3	22.4	20.7	1.68	13.351 SF	
500.0	498.7	509.0	507.6	1.1	1.2	-134.12	-13.2	-18.7	30.8	28.5	2.26	13.601	
600.0	597.5	608.2	605.5	1.5	1.5	-127.52	-15.1	-34.4	42.2	39.3	2.93	14.408	
700.0	695.6	706.8	702.3	1.9	1.9	-123.15	-17.3	-53.3	56.6	52.9	3.69	15.328	
800.0	793.1	804.8	797.7	2.3	2.4	-120.17	-19.9	-75.4	73.6	69.1	4.55	16.194	
900.0	889.6	902.1	891.6	2.8	2.9	-118.05	-22.8	-100.5	93.3	87.8	5.51	16.950	
1,000.0	985.3	998.5	983.9	3.4	3.5	-116.47	-26.1	-128.5	115.6	109.0	6.57	17.584	
1,072.1	1,053.6	1,067.6	1,049.3	3.9	3.9	-115.55	-28.7	-150.5	133.2	125.8	7.42	17.956	
1,100.0	1,079.9	1,094.1	1,074.3	4.1	4.1	-115.32	-29.7	-159.3	140.3	132.6	7.75	18.095	
1,200.0	1,174.2	1,189.0	1,163.0	4.7	4.8	-113.96	-33.7	-192.8	166.4	157.4	9.02	18.454	
1,300.0	1,268.5	1,283.0	1,249.7	5.4	5.5	-112.07	-37.9	-228.9	193.7	183.4	10.34	18.732	
1,400.0	1,362.8	1,377.4	1,335.7	6.1	6.4	-109.98	-42.4	-267.5	222.2	210.5	11.71	18.979	
1,500.0	1,457.1	1,472.9	1,422.6	6.8	7.2	-108.26	-47.0	-307.0	251.1	238.0	13.09	19.178	
1,600.0	1,551.3	1,568.4	1,509.4	7.5	8.0	-106.89	-51.7	-346.4	280.1	265.7	14.48	19.352	
1,700.0	1,645.6	1,663.9	1,596.3	8.2	8.9	-105.78	-56.3	-385.8	309.3	293.4	15.86	19.502	
1,800.0	1,739.9	1,759.4	1,683.1	8.8	9.7	-104.86	-60.9	-425.2	338.5	321.3	17.24	19.634	
1,900.0	1,834.2	1,854.9	1,770.0	9.5	10.6	-104.09	-65.5	-464.7	367.8	349.2	18.62	19.749	
2,000.0	1,928.5	1,950.4	1,856.9	10.2	11.5	-103.43	-70.2	-504.1	397.2	377.2	20.01	19.852	
2,100.0	2,022.8	2,045.9	1,943.7	10.9	12.3	-102.86	-74.8	-543.5	426.6	405.2	21.39	19.942	
2,200.0	2,117.1	2,141.4	2,030.6	11.6	13.2	-102.37	-79.4	-582.9	456.0	433.2	22.77	20.024	
2,300.0	2,211.4	2,236.9	2,117.4	12.3	14.0	-101.93	-84.0	-622.3	485.5	461.3	24.16	20.097	
2,400.0	2,305.7	2,332.4	2,204.3	13.0	14.9	-101.55	-88.6	-661.8	514.9	489.4	25.54	20.163	
2,500.0	2,400.0	2,427.9	2,291.2	13.7	15.8	-101.20	-93.3	-701.2	544.4	517.5	26.92	20.222	
2,600.0	2,494.3	2,523.4	2,378.0	14.4	16.6	-100.89	-97.9	-740.6	574.0	545.6	28.31	20.277	
2,700.0	2,588.6	2,618.9	2,464.9	15.1	17.5	-100.62	-102.5	-780.0	603.5	573.8	29.69	20.327	
2,800.0	2,682.9	2,714.4	2,551.8	15.8	18.3	-100.36	-107.1	-819.5	633.0	602.0	31.07	20.373	
2,900.0	2,777.2	2,809.9	2,638.6	16.5	19.2	-100.13	-111.8	-858.9	662.6	630.1	32.46	20.415	
3,000.0	2,871.5	2,905.4	2,725.5	17.2	20.1	-99.92	-116.4	-898.3	692.1	658.3	33.84	20.454	
3,100.0	2,965.8	3,000.9	2,812.3	17.9	20.9	-99.73	-121.0	-937.7	721.7	686.5	35.22	20.490	
3,200.0	3,060.1	3,096.4	2,899.2	18.6	21.8	-99.55	-125.6	-977.1	751.3	714.7	36.61	20.523	
3,300.0	3,154.4	3,192.0	2,986.1	19.3	22.7	-99.39	-130.3	-1,016.6	780.9	742.9	37.99	20.554	
3,400.0	3,248.7	3,287.5	3,072.9	20.0	23.5	-99.24	-134.9	-1,056.0	810.4	771.1	39.37	20.584	
3,500.0	3,343.0	3,383.0	3,159.8	20.7	24.4	-99.09	-139.5	-1,095.4	840.0	799.3	40.76	20.611	
3,600.0	3,437.3	3,478.5	3,246.7	21.4	25.3	-98.96	-144.1	-1,134.8	869.6	827.5	42.14	20.636	
3,700.0	3,531.6	3,574.0	3,333.5	22.1	26.1	-98.84	-148.7	-1,174.3	899.2	855.7	43.52	20.660	
3,800.0	3,625.9	3,669.5	3,420.4	22.8	27.0	-98.72	-153.4	-1,213.7	928.8	883.9	44.91	20.683	
3,900.0	3,720.2	3,765.0	3,507.2	23.5	27.9	-98.61	-158.0	-1,253.1	958.4	912.2	46.29	20.704	
4,000.0	3,814.5	3,860.5	3,594.1	24.2	28.7	-98.51	-162.6	-1,292.5	988.1	940.4	47.68	20.724	

Company:	Bayswater Exploration & Production, LLC	Local Co-ordinate Reference:	Well Booth 19-23
Project:	SEC.26-T7N-R65W	TVD Reference:	WELL @ 4900.0ft (Original Well Elev)
Reference Site:	Booth 8 Pad Sec.26-T7N-R65W	MD Reference:	WELL @ 4900.0ft (Original Well Elev)
Site Error:	0.0ft	North Reference:	True
Reference Well:	Booth 19-23	Survey Calculation Method:	Minimum Curvature
Well Error:	0.0ft	Output errors are at	2.00 sigma
Reference Wellbore	Wellbore #1	Database:	Landmark
Reference Design:	Plan #1 (5-02-13)	Offset TVD Reference:	Offset Datum

Reference Depths are relative to WELL @ 4900.0ft (Original Well Elev) Coordinates are relative to: Booth 19-23
 Offset Depths are relative to Offset Datum Coordinate System is US State Plane 1983, Colorado Northern Zone
 Central Meridian is -105.500000 ° Grid Convergence at Surface is: 0.56°



Company:	Bayswater Exploration & Production, LLC	Local Co-ordinate Reference:	Well Booth 19-23
Project:	SEC.26-T7N-R65W	TVD Reference:	WELL @ 4900.0ft (Original Well Elev)
Reference Site:	Booth 8 Pad Sec.26-T7N-R65W	MD Reference:	WELL @ 4900.0ft (Original Well Elev)
Site Error:	0.0ft	North Reference:	True
Reference Well:	Booth 19-23	Survey Calculation Method:	Minimum Curvature
Well Error:	0.0ft	Output errors are at	2.00 sigma
Reference Wellbore	Wellbore #1	Database:	Landmark
Reference Design:	Plan #1 (5-02-13)	Offset TVD Reference:	Offset Datum

Reference Depths are relative to WELL @ 4900.0ft (Original Well Elev) Coordinates are relative to: Booth 19-23
Offset Depths are relative to Offset Datum Coordinate System is US State Plane 1983, Colorado Northern Zone
Central Meridian is -105.500000 ° Grid Convergence at Surface is: 0.56°

