

KERR-MCGEE OIL & GAS ONSHORE LP

Location: COLORADO Slot: SLOT#20 JELTS 39C-19HZ (275'FNL & 908'FEL, SEC.19)
Field: WELD COUNTY (KERR MCGEE) Well: JELTS 39C-19HZ
Facility: SEC.19-T1N-R67W Wellbore: JELTS 39C-19HZ PWB

Plot reference wellpath is JELTS 39C-19HZ (PERMIT REV-1) PWP

True vertical depths are referenced to XTREME 24 (RKB)	Grid System: NAD83 / Lambert Colorado SP, Northern Zone (501), US feet
Measured depths are referenced to XTREME 24 (RKB)	North Reference: True north
XTREME 24 (RKB) to Mean Sea Level: 5174 feet	Scale: True distance
Mean Sea Level to Mud line (At Slot: SLOT#20 JELTS 39C-19HZ (275'FNL & 908'FEL, SEC.19)): 0 feet	Depths are in feet
Coordinates are in feet referenced to Slot	Created by: wlsjef02 on 5/3/2013

Location Information

Facility Name			Grid East (US ft)	Grid North (US ft)	Latitude	Longitude
SEC.19-T1N-R67W			3157293.749	1259018.130	40°02'34.891"N	104°56'17.471"W
Slot	Local N (ft)	Local E (ft)	Grid East (US ft)	Grid North (US ft)	Latitude	Longitude
SLOT#20 JELTS 39C-19HZ (275'FNL & 908'FEL, SEC.19)	25.99	3032.65	3160336.059	1259063.330	40°02'35.146"N	104°55'38.478"W
XTREME 24 (RKB) to Mud line (At Slot: SLOT#20 JELTS 39C-19HZ (275'FNL & 908'FEL, SEC.19))					5174ft	
Mean Sea Level to Mud line (At Slot: SLOT#20 JELTS 39C-19HZ (275'FNL & 908'FEL, SEC.19))					0ft	
XTREME 24 (RKB) to Mean Sea Level					5174ft	

Survey Program

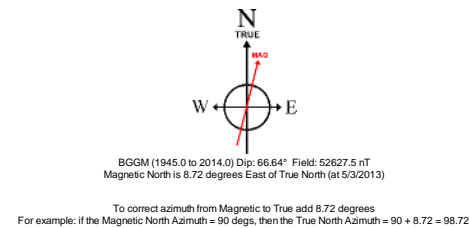
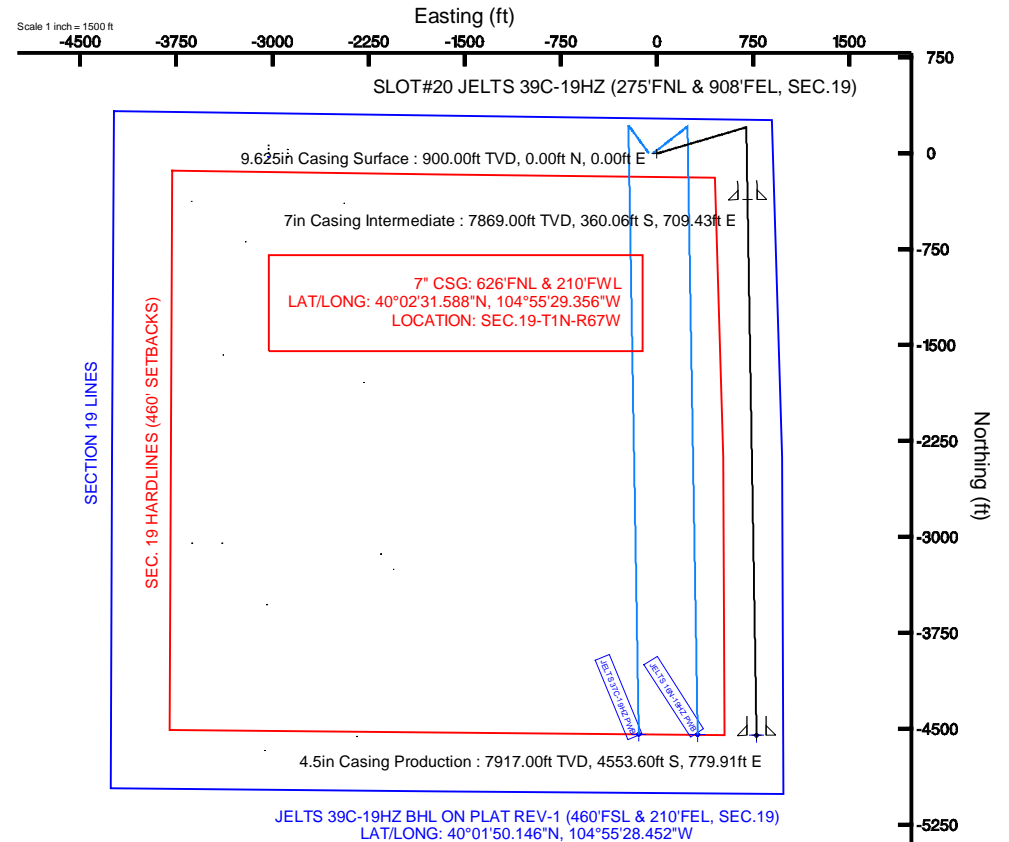
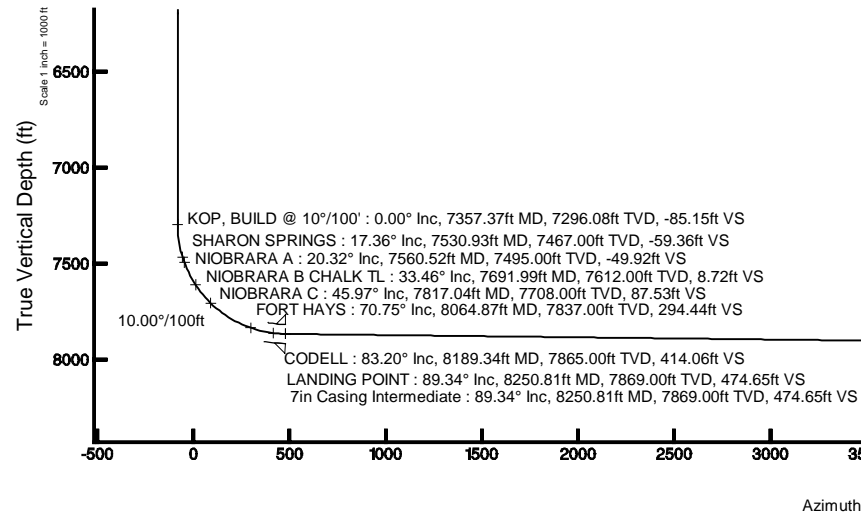
Start MD (ft)	End MD (ft)	Tool	Model	Log Name/Comment	Wellbore
16.00	8250.81	NaviTrak	NaviTrak (Standard)		JELTS 39C-19HZ PWB
8250.81	12445.22	OnTrak	OnTrak (Standard)		JELTS 39C-19HZ PWB

Well Profile Data

Design Comment	MD (ft)	Inc (°)	Az (°)	TVD (ft)	Local N (ft)	Local E (ft)	DLS (°/100ft)	VS (ft)
TIE-ON	16.00	0.000	73.580	16.00	0.00	0.00	0.00	0.00
BEGIN NUDGE	1100.00	0.000	73.580	1100.00	0.00	0.00	0.00	0.00
END NUDGE	1600.00	10.000	73.580	1597.47	12.30	41.75	2.00	-5.08
BEGIN DROP	5300.76	10.000	73.580	5242.00	193.96	658.17	0.00	-80.07
END DROP	5800.76	0.000	179.037	5739.47	206.26	699.92	2.00	-85.15
KOP, BUILD @ 10°/100'	7357.37	0.000	179.037	7296.08	206.26	699.92	0.00	-85.15
LANDING POINT	8250.81	89.344	179.037	7869.00	-360.06	709.43	10.00	474.65
TOTAL DEPTH	12445.22	89.344	179.037	7917.00	-4553.60	779.91	0.00	4619.91

Targets

Name	MD (ft)	TVD (ft)	Local N (ft)	Local E (ft)	Grid East (US ft)	Grid North (US ft)	Latitude	Longitude
SECTION 19 LINES		41.00	-25.72	-3032.58	3157293.83	1259018.03	40°02'34.890"N	104°56'17.470"W
JELTS 39C-19HZ BHL ON PLAT REV-1 (460'FSL & 210'FEL, SEC.19)	12445.22	7917.00	-4553.60	779.91	3161135.33	1254515.03	40°01'50.146"N	104°55'28.452"W
SEC. 19 HARDLINES (460' SETBACKS)		8041.00	-25.72	-3032.58	3157293.83	1259018.03	40°02'34.890"N	104°56'17.470"W



4.5in Casing Production : 89.34° Inc, 12445.22ft MD, 7917.00ft TVD, 4619.91ft VS
TOTAL DEPTH : 89.34° Inc, 12445.22ft MD, 7917.00ft TVD, 4619.91ft VS
JELTS 39C-19HZ BHL ON PLAT REV-1 (460'FSL & 210'FEL, SEC.19)

Scale 1 inch = 1000 ft



Planned Wellpath Report

JELTS 39C-19HZ (PERMIT REV-1) PWP

Page 1 of 6



REFERENCE WELLPATH IDENTIFICATION			
Operator	KERR-MCGEE OIL & GAS ONSHORE LP	Slot	SLOT#20 JELTS 39C-19HZ (275'FNL & 908'FEL, SEC.19)
Area	COLORADO	Well	JELTS 39C-19HZ
Field	WELD COUNTY (KERR MCGEE)	Wellbore	JELTS 39C-19HZ PWB
Facility	SEC.19-T1N-R67W		

REPORT SETUP INFORMATION			
Projection System	NAD83 / Lambert Colorado SP, Northern Zone (501), US feet	Software System	WellArchitect® 3.0.2
North Reference	True	User	Wilsjef02
Scale	0.999963	Report Generated	5/3/2013 at 09:25:30
Convergence at slot	0.37° East	Database/Source file	WellArchitectDB/JELTS_39C-19HZ_PWB.xml

WELLPATH LOCATION						
	Local coordinates		Grid coordinates		Geographic coordinates	
	North[ft]	East[ft]	Easting[US ft]	Northing[US ft]	Latitude	Longitude
Slot Location	25.99	3032.65	3160326.06	1259063.33	40°02'35.146"N	104°55'38.478"W
Facility Reference Pt			3157293.75	1259018.13	40°02'34.891"N	104°56'17.471"W
Field Reference Pt			3197771.84	1268891.29	40°04'09.600"N	104°47'36.000"W

WELLPATH DATUM			
Calculation method	Minimum curvature	XTREME 24 (RKB) to Facility Vertical Datum	5174.00ft
Horizontal Reference Pt	Slot	XTREME 24 (RKB) to Mean Sea Level	5174.00ft
Vertical Reference Pt	XTREME 24 (RKB)	XTREME 24 (RKB) to Mud Line at Slot (SLOT#20 JELTS 39C-19HZ (275'FNL & 908'FEL, SEC.19))	5174.00ft
MD Reference Pt	XTREME 24 (RKB)	Section Origin	N 0.00, E 0.00 ft
Field Vertical Reference	Mean Sea Level	Section Azimuth	170.28°



Planned Wellpath Report

JELTS 39C-19HZ (PERMIT REV-1) PWP
Page 2 of 6



REFERENCE WELLPATH IDENTIFICATION

Operator	KERR-MCGEE OIL & GAS ONSHORE LP	Slot	SLOT#20 JELTS 39C-19HZ (275'FNL & 908'FEL, SEC.19)
Area	COLORADO	Well	JELTS 39C-19HZ
Field	WELD COUNTY (KERR MCGEE)	Wellbore	JELTS 39C-19HZ PWB
Facility	SEC.19-T1N-R67W		

WELLPATH DATA (140 stations) † = interpolated/extrapolated station

MD [ft]	Inclination [°]	Azimuth [°]	TVD [ft]	Vert Sect [ft]	North [ft]	East [ft]	Latitude	Longitude	DLS [°/100ft]	Comments
0.00†	0.000	73.580	0.00	0.00	0.00	0.00	40°02'35.146"N	104°55'38.478"W	0.00	
16.00	0.000	73.580	16.00	0.00	0.00	0.00	40°02'35.146"N	104°55'38.478"W	0.00	TIE-ON
116.00†	0.000	73.580	116.00	0.00	0.00	0.00	40°02'35.146"N	104°55'38.478"W	0.00	
216.00†	0.000	73.580	216.00	0.00	0.00	0.00	40°02'35.146"N	104°55'38.478"W	0.00	
316.00†	0.000	73.580	316.00	0.00	0.00	0.00	40°02'35.146"N	104°55'38.478"W	0.00	
416.00†	0.000	73.580	416.00	0.00	0.00	0.00	40°02'35.146"N	104°55'38.478"W	0.00	
516.00†	0.000	73.580	516.00	0.00	0.00	0.00	40°02'35.146"N	104°55'38.478"W	0.00	
616.00†	0.000	73.580	616.00	0.00	0.00	0.00	40°02'35.146"N	104°55'38.478"W	0.00	
716.00†	0.000	73.580	716.00	0.00	0.00	0.00	40°02'35.146"N	104°55'38.478"W	0.00	
816.00†	0.000	73.580	816.00	0.00	0.00	0.00	40°02'35.146"N	104°55'38.478"W	0.00	
916.00†	0.000	73.580	916.00	0.00	0.00	0.00	40°02'35.146"N	104°55'38.478"W	0.00	
1016.00†	0.000	73.580	1016.00	0.00	0.00	0.00	40°02'35.146"N	104°55'38.478"W	0.00	
1100.00	0.000	73.580	1100.00	0.00	0.00	0.00	40°02'35.146"N	104°55'38.478"W	0.00	BEGIN NUDGE
1116.00†	0.320	73.580	1116.00	-0.01	0.01	0.04	40°02'35.146"N	104°55'38.477"W	2.00	
1216.00†	2.320	73.580	1215.97	-0.27	0.66	2.25	40°02'35.153"N	104°55'38.449"W	2.00	
1316.00†	4.320	73.580	1315.80	-0.95	2.30	7.81	40°02'35.169"N	104°55'38.378"W	2.00	
1416.00†	6.320	73.580	1415.36	-2.03	4.92	16.70	40°02'35.195"N	104°55'38.263"W	2.00	
1516.00†	8.320	73.580	1514.54	-3.52	8.52	28.92	40°02'35.230"N	104°55'38.106"W	2.00	
1600.00	10.000	73.580	1597.47	-5.08	12.30	41.75	40°02'35.268"N	104°55'37.941"W	2.00	END NUDGE
1616.00†	10.000	73.580	1613.22	-5.40	13.09	44.41	40°02'35.275"N	104°55'37.907"W	0.00	
1716.00†	10.000	73.580	1711.70	-7.43	18.00	61.07	40°02'35.324"N	104°55'37.693"W	0.00	
1816.00†	10.000	73.580	1810.18	-9.46	22.91	77.73	40°02'35.372"N	104°55'37.479"W	0.00	
1916.00†	10.000	73.580	1908.66	-11.48	27.81	94.38	40°02'35.421"N	104°55'37.264"W	0.00	
2016.00†	10.000	73.580	2007.15	-13.51	32.72	111.04	40°02'35.469"N	104°55'37.050"W	0.00	
2116.00†	10.000	73.580	2105.63	-15.53	37.63	127.70	40°02'35.518"N	104°55'36.836"W	0.00	
2216.00†	10.000	73.580	2204.11	-17.56	42.54	144.35	40°02'35.566"N	104°55'36.622"W	0.00	
2316.00†	10.000	73.580	2302.59	-19.59	47.45	161.01	40°02'35.615"N	104°55'36.408"W	0.00	
2416.00†	10.000	73.580	2401.07	-21.61	52.36	177.67	40°02'35.663"N	104°55'36.194"W	0.00	
2516.00†	10.000	73.580	2499.55	-23.64	57.27	194.32	40°02'35.712"N	104°55'35.979"W	0.00	
2616.00†	10.000	73.580	2598.03	-25.67	62.17	210.98	40°02'35.760"N	104°55'35.765"W	0.00	
2716.00†	10.000	73.580	2696.51	-27.69	67.08	227.64	40°02'35.809"N	104°55'35.551"W	0.00	
2816.00†	10.000	73.580	2794.99	-29.72	71.99	244.29	40°02'35.857"N	104°55'35.337"W	0.00	
2916.00†	10.000	73.580	2893.47	-31.74	76.90	260.95	40°02'35.906"N	104°55'35.123"W	0.00	
3016.00†	10.000	73.580	2991.95	-33.77	81.81	277.60	40°02'35.954"N	104°55'34.909"W	0.00	
3116.00†	10.000	73.580	3090.43	-35.80	86.72	294.26	40°02'36.003"N	104°55'34.694"W	0.00	
3216.00†	10.000	73.580	3188.91	-37.82	91.63	310.92	40°02'36.051"N	104°55'34.480"W	0.00	
3316.00†	10.000	73.580	3287.40	-39.85	96.53	327.57	40°02'36.100"N	104°55'34.266"W	0.00	
3416.00†	10.000	73.580	3385.88	-41.88	101.44	344.23	40°02'36.148"N	104°55'34.052"W	0.00	
3516.00†	10.000	73.580	3484.36	-43.90	106.35	360.89	40°02'36.197"N	104°55'33.838"W	0.00	
3616.00†	10.000	73.580	3582.84	-45.93	111.26	377.54	40°02'36.245"N	104°55'33.624"W	0.00	
3716.00†	10.000	73.580	3681.32	-47.96	116.17	394.20	40°02'36.294"N	104°55'33.409"W	0.00	
3816.00†	10.000	73.580	3779.80	-49.98	121.08	410.86	40°02'36.342"N	104°55'33.195"W	0.00	
3916.00†	10.000	73.580	3878.28	-52.01	125.99	427.51	40°02'36.391"N	104°55'32.981"W	0.00	
4016.00†	10.000	73.580	3976.76	-54.03	130.90	444.17	40°02'36.439"N	104°55'32.767"W	0.00	
4116.00†	10.000	73.580	4075.24	-56.06	135.80	460.83	40°02'36.488"N	104°55'32.553"W	0.00	



Planned Wellpath Report

JELTS 39C-19HZ (PERMIT REV-1) PWP
Page 3 of 6



REFERENCE WELLPATH IDENTIFICATION

Operator	KERR-MCGEE OIL & GAS ONSHORE LP	Slot	SLOT#20 JELTS 39C-19HZ (275'FNL & 908'FEL, SEC.19)
Area	COLORADO	Well	JELTS 39C-19HZ
Field	WELD COUNTY (KERR MCGEE)	Wellbore	JELTS 39C-19HZ PWB
Facility	SEC.19-T1N-R67W		

WELLPATH DATA (140 stations) † = interpolated/extrapolated station

MD [ft]	Inclination [°]	Azimuth [°]	TVD [ft]	Vert Sect [ft]	North [ft]	East [ft]	Latitude	Longitude	DLS [°/100ft]	Comments
4216.00†	10.000	73.580	4173.72	-58.09	140.71	477.48	40°02'36.537"N	104°55'32.339"W	0.00	
4316.00†	10.000	73.580	4272.20	-60.11	145.62	494.14	40°02'36.585"N	104°55'32.124"W	0.00	
4416.00†	10.000	73.580	4370.68	-62.14	150.53	510.80	40°02'36.634"N	104°55'31.910"W	0.00	
4516.00†	10.000	73.580	4469.16	-64.17	155.44	527.45	40°02'36.682"N	104°55'31.696"W	0.00	
4616.00†	10.000	73.580	4567.65	-66.19	160.35	544.11	40°02'36.731"N	104°55'31.482"W	0.00	
4716.00†	10.000	73.580	4666.13	-68.22	165.26	560.77	40°02'36.779"N	104°55'31.268"W	0.00	
4816.00†	10.000	73.580	4764.61	-70.24	170.16	577.42	40°02'36.828"N	104°55'31.054"W	0.00	
4916.00†	10.000	73.580	4863.09	-72.27	175.07	594.08	40°02'36.876"N	104°55'30.839"W	0.00	
4977.85†	10.000	73.580	4924.00	-73.52	178.11	604.38	40°02'36.906"N	104°55'30.707"W	0.00	SUSSEX
5016.00†	10.000	73.580	4961.57	-74.30	179.98	610.74	40°02'36.925"N	104°55'30.625"W	0.00	
5116.00†	10.000	73.580	5060.05	-76.32	184.89	627.39	40°02'36.973"N	104°55'30.411"W	0.00	
5216.00†	10.000	73.580	5158.53	-78.35	189.80	644.05	40°02'37.022"N	104°55'30.197"W	0.00	
5300.76	10.000	73.580	5242.00	-80.07	193.96	658.17	40°02'37.063"N	104°55'30.015"W	0.00	BEGIN DROP
5316.00†	9.695	73.580	5257.02	-80.37	194.70	660.67	40°02'37.070"N	104°55'29.983"W	2.00	
5416.00†	7.695	73.580	5355.86	-82.14	198.97	675.17	40°02'37.112"N	104°55'29.797"W	2.00	
5516.00†	5.695	73.580	5455.18	-83.50	202.26	686.35	40°02'37.145"N	104°55'29.653"W	2.00	
5616.00†	3.695	73.580	5554.84	-84.45	204.58	694.20	40°02'37.168"N	104°55'29.552"W	2.00	
5716.00†	1.695	73.580	5654.72	-85.00	205.91	698.71	40°02'37.181"N	104°55'29.494"W	2.00	
5800.76	0.000	179.037	5739.47	-85.15	206.26	699.92	40°02'37.184"N	104°55'29.479"W	2.00	END DROP
5816.00†	0.000	179.037	5754.71	-85.15	206.26	699.92	40°02'37.184"N	104°55'29.479"W	0.00	
5916.00†	0.000	179.037	5854.71	-85.15	206.26	699.92	40°02'37.184"N	104°55'29.479"W	0.00	
6016.00†	0.000	179.037	5954.71	-85.15	206.26	699.92	40°02'37.184"N	104°55'29.479"W	0.00	
6116.00†	0.000	179.037	6054.71	-85.15	206.26	699.92	40°02'37.184"N	104°55'29.479"W	0.00	
6216.00†	0.000	179.037	6154.71	-85.15	206.26	699.92	40°02'37.184"N	104°55'29.479"W	0.00	
6316.00†	0.000	179.037	6254.71	-85.15	206.26	699.92	40°02'37.184"N	104°55'29.479"W	0.00	
6416.00†	0.000	179.037	6354.71	-85.15	206.26	699.92	40°02'37.184"N	104°55'29.479"W	0.00	
6516.00†	0.000	179.037	6454.71	-85.15	206.26	699.92	40°02'37.184"N	104°55'29.479"W	0.00	
6616.00†	0.000	179.037	6554.71	-85.15	206.26	699.92	40°02'37.184"N	104°55'29.479"W	0.00	
6716.00†	0.000	179.037	6654.71	-85.15	206.26	699.92	40°02'37.184"N	104°55'29.479"W	0.00	
6816.00†	0.000	179.037	6754.71	-85.15	206.26	699.92	40°02'37.184"N	104°55'29.479"W	0.00	
6916.00†	0.000	179.037	6854.71	-85.15	206.26	699.92	40°02'37.184"N	104°55'29.479"W	0.00	
7016.00†	0.000	179.037	6954.71	-85.15	206.26	699.92	40°02'37.184"N	104°55'29.479"W	0.00	
7116.00†	0.000	179.037	7054.71	-85.15	206.26	699.92	40°02'37.184"N	104°55'29.479"W	0.00	
7216.00†	0.000	179.037	7154.71	-85.15	206.26	699.92	40°02'37.184"N	104°55'29.479"W	0.00	
7316.00†	0.000	179.037	7254.71	-85.15	206.26	699.92	40°02'37.184"N	104°55'29.479"W	0.00	
7357.37	0.000	179.037	7296.08	-85.15	206.26	699.92	40°02'37.184"N	104°55'29.479"W	0.00	KOP, BUILD @ 10°/100'
7416.00†	5.863	179.037	7354.61	-82.18	203.26	699.97	40°02'37.155"N	104°55'29.478"W	10.00	
7516.00†	15.863	179.037	7452.69	-63.58	184.44	700.28	40°02'36.969"N	104°55'29.474"W	10.00	
7530.93†	17.357	179.037	7467.00	-59.36	180.18	700.35	40°02'36.926"N	104°55'29.473"W	10.00	SHARON SPRINGS
7560.52†	20.315	179.037	7495.00	-49.92	170.63	700.51	40°02'36.832"N	104°55'29.471"W	10.00	NIOBRARA A
7616.00†	25.863	179.037	7546.01	-28.43	148.88	700.88	40°02'36.617"N	104°55'29.466"W	10.00	
7691.99†	33.463	179.037	7612.00	8.72	111.31	701.51	40°02'36.246"N	104°55'29.458"W	10.00	NIOBRARA B CHALK TL
7716.00†	35.863	179.037	7631.74	22.21	97.65	701.74	40°02'36.111"N	104°55'29.455"W	10.00	
7816.00†	45.863	179.037	7707.28	86.79	32.32	702.84	40°02'35.465"N	104°55'29.441"W	10.00	
7817.04†	45.967	179.037	7708.00	87.53	31.57	702.85	40°02'35.458"N	104°55'29.441"W	10.00	NIOBRARA C



Planned Wellpath Report

JELTS 39C-19HZ (PERMIT REV-1) PWP
Page 4 of 6



REFERENCE WELLPATH IDENTIFICATION

Operator	KERR-MCGEE OIL & GAS ONSHORE LP	Slot	SLOT#20 JELTS 39C-19HZ (275'FNL & 908'FEL, SEC.19)
Area	COLORADO	Well	JELTS 39C-19HZ
Field	WELD COUNTY (KERR MCGEE)	Wellbore	JELTS 39C-19HZ PWB
Facility	SEC.19-T1N-R67W		

WELLPATH DATA (140 stations) † = interpolated/extrapolated station

MD [ft]	Inclination [°]	Azimuth [°]	TVD [ft]	Vert Sect [ft]	North [ft]	East [ft]	Latitude	Longitude	DLS [°/100ft]	Comments
7916.00†	55.863	179.037	7770.31	163.36	-45.13	704.14	40°02'34.700"N	104°55'29.424"W	10.00	
8016.00†	65.863	179.037	7818.94	249.57	-132.36	705.61	40°02'33.838"N	104°55'29.406"W	10.00	
8064.87†	70.750	179.037	7837.00	294.44	-177.75	706.37	40°02'33.389"N	104°55'29.396"W	10.00	FORT HAYS
8116.00†	75.863	179.037	7851.68	342.83	-226.70	707.19	40°02'32.906"N	104°55'29.385"W	10.00	
8189.34†	83.198	179.037	7865.00	414.06	-298.76	708.40	40°02'32.193"N	104°55'29.370"W	10.00	CODELL
8216.00†	85.863	179.037	7867.54	440.28	-325.29	708.85	40°02'31.931"N	104°55'29.364"W	10.00	
8250.81	89.344	179.037	7869.00	474.65	-360.06	709.43	40°02'31.588"N	104°55'29.356"W	10.00	LANDING POINT
8316.00†	89.344	179.037	7869.74	539.08	-425.24	710.53	40°02'30.944"N	104°55'29.342"W	0.00	
8416.00†	89.344	179.037	7870.89	637.91	-525.21	712.21	40°02'29.956"N	104°55'29.321"W	0.00	
8516.00†	89.344	179.037	7872.03	736.74	-625.19	713.89	40°02'28.968"N	104°55'29.299"W	0.00	
8616.00†	89.344	179.037	7873.18	835.56	-725.17	715.57	40°02'27.980"N	104°55'29.278"W	0.00	
8716.00†	89.344	179.037	7874.32	934.39	-825.15	717.25	40°02'26.992"N	104°55'29.256"W	0.00	
8816.00†	89.344	179.037	7875.46	1033.22	-925.13	718.93	40°02'26.004"N	104°55'29.235"W	0.00	
8916.00†	89.344	179.037	7876.61	1132.05	-1025.11	720.61	40°02'25.015"N	104°55'29.213"W	0.00	
9016.00†	89.344	179.037	7877.75	1230.88	-1125.09	722.29	40°02'24.027"N	104°55'29.191"W	0.00	
9116.00†	89.344	179.037	7878.90	1329.70	-1225.07	723.97	40°02'23.039"N	104°55'29.170"W	0.00	
9216.00†	89.344	179.037	7880.04	1428.53	-1325.05	725.65	40°02'22.051"N	104°55'29.148"W	0.00	
9316.00†	89.344	179.037	7881.19	1527.36	-1425.03	727.33	40°02'21.063"N	104°55'29.127"W	0.00	
9416.00†	89.344	179.037	7882.33	1626.19	-1525.01	729.01	40°02'20.075"N	104°55'29.105"W	0.00	
9516.00†	89.344	179.037	7883.48	1725.02	-1624.99	730.69	40°02'19.087"N	104°55'29.084"W	0.00	
9616.00†	89.344	179.037	7884.62	1823.84	-1724.97	732.37	40°02'18.099"N	104°55'29.062"W	0.00	
9716.00†	89.344	179.037	7885.76	1922.67	-1824.95	734.05	40°02'17.111"N	104°55'29.040"W	0.00	
9816.00†	89.344	179.037	7886.91	2021.50	-1924.93	735.73	40°02'16.123"N	104°55'29.019"W	0.00	
9916.00†	89.344	179.037	7888.05	2120.33	-2024.90	737.41	40°02'15.135"N	104°55'28.997"W	0.00	
10016.00†	89.344	179.037	7889.20	2219.16	-2124.88	739.09	40°02'14.147"N	104°55'28.976"W	0.00	
10116.00†	89.344	179.037	7890.34	2317.98	-2224.86	740.77	40°02'13.159"N	104°55'28.954"W	0.00	
10216.00†	89.344	179.037	7891.49	2416.81	-2324.84	742.45	40°02'12.171"N	104°55'28.933"W	0.00	
10316.00†	89.344	179.037	7892.63	2515.64	-2424.82	744.13	40°02'11.183"N	104°55'28.911"W	0.00	
10416.00†	89.344	179.037	7893.78	2614.47	-2524.80	745.81	40°02'10.195"N	104°55'28.890"W	0.00	
10516.00†	89.344	179.037	7894.92	2713.30	-2624.78	747.49	40°02'09.207"N	104°55'28.868"W	0.00	
10616.00†	89.344	179.037	7896.06	2812.12	-2724.76	749.17	40°02'08.219"N	104°55'28.846"W	0.00	
10716.00†	89.344	179.037	7897.21	2910.95	-2824.74	750.85	40°02'07.231"N	104°55'28.825"W	0.00	
10816.00†	89.344	179.037	7898.35	3009.78	-2924.72	752.53	40°02'06.243"N	104°55'28.803"W	0.00	
10916.00†	89.344	179.037	7899.50	3108.61	-3024.70	754.21	40°02'05.255"N	104°55'28.782"W	0.00	
11016.00†	89.344	179.037	7900.64	3207.44	-3124.68	755.89	40°02'04.267"N	104°55'28.760"W	0.00	
11116.00†	89.344	179.037	7901.79	3306.27	-3224.66	757.57	40°02'03.279"N	104°55'28.739"W	0.00	
11216.00†	89.344	179.037	7902.93	3405.09	-3324.64	759.25	40°02'02.291"N	104°55'28.717"W	0.00	
11316.00†	89.344	179.037	7904.08	3503.92	-3424.62	760.93	40°02'01.303"N	104°55'28.695"W	0.00	
11416.00†	89.344	179.037	7905.22	3602.75	-3524.59	762.61	40°02'00.315"N	104°55'28.674"W	0.00	
11516.00†	89.344	179.037	7906.37	3701.58	-3624.57	764.29	40°01'59.327"N	104°55'28.652"W	0.00	
11616.00†	89.344	179.037	7907.51	3800.41	-3724.55	765.98	40°01'58.339"N	104°55'28.631"W	0.00	
11716.00†	89.344	179.037	7908.65	3899.23	-3824.53	767.66	40°01'57.351"N	104°55'28.609"W	0.00	
11816.00†	89.344	179.037	7909.80	3998.06	-3924.51	769.34	40°01'56.363"N	104°55'28.588"W	0.00	
11916.00†	89.344	179.037	7910.94	4096.89	-4024.49	771.02	40°01'55.375"N	104°55'28.566"W	0.00	
12016.00†	89.344	179.037	7912.09	4195.72	-4124.47	772.70	40°01'54.387"N	104°55'28.545"W	0.00	



Planned Wellpath Report

JELTS 39C-19HZ (PERMIT REV-1) PWP

Page 5 of 6



REFERENCE WELLPATH IDENTIFICATION			
Operator	KERR-MCGEE OIL & GAS ONSHORE LP	Slot	SLOT#20 JELTS 39C-19HZ (275'FNL & 908'FEL, SEC.19)
Area	COLORADO	Well	JELTS 39C-19HZ
Field	WELD COUNTY (KERR MCGEE)	Wellbore	JELTS 39C-19HZ PWB
Facility	SEC.19-T1N-R67W		

WELLPATH DATA (140 stations) † = interpolated/extrapolated station										
MD [ft]	Inclination [°]	Azimuth [°]	TVD [ft]	Vert Sect [ft]	North [ft]	East [ft]	Latitude	Longitude	DLS [°/100ft]	Comments
12116.00†	89.344	179.037	7913.23	4294.55	-4224.45	774.38	40°01'53.399"N	104°55'28.523"W	0.00	
12216.00†	89.344	179.037	7914.38	4393.37	-4324.43	776.06	40°01'52.411"N	104°55'28.501"W	0.00	
12316.00†	89.344	179.037	7915.52	4492.20	-4424.41	777.74	40°01'51.423"N	104°55'28.480"W	0.00	
12416.00†	89.344	179.037	7916.67	4591.03	-4524.39	779.42	40°01'50.435"N	104°55'28.458"W	0.00	
12445.22	89.344	179.037	7917.00 ¹	4619.91	-4553.60	779.91	40°01'50.146"N	104°55'28.452"W	0.00	TOTAL DEPTH

HOLE & CASING SECTIONS - Ref Wellbore: JELTS 39C-19HZ PWB Ref Wellpath: JELTS 39C-19HZ (PERMIT REV-1) PWP									
String/Diameter	Start MD [ft]	End MD [ft]	Interval [ft]	Start TVD [ft]	End TVD [ft]	Start N/S [ft]	Start E/W [ft]	End N/S [ft]	End E/W [ft]
13.5in Open Hole	16.00	900.00	884.00	16.00	900.00	0.00	0.00	0.00	0.00
9.625in Casing Surface	16.00	900.00	884.00	16.00	900.00	0.00	0.00	0.00	0.00
8.75in Open Hole	900.00	8250.81	7350.81	900.00	7869.00	0.00	0.00	-360.06	709.43
7in Casing Intermediate	16.00	8250.81	8234.81	16.00	7869.00	0.00	0.00	-360.06	709.43
6.125in Open Hole	8250.81	12445.22	4194.41	7869.00	7917.00	-360.06	709.43	-4553.60	779.91
4.5in Casing Production	16.00	12445.22	12429.22	16.00	7917.00	0.00	0.00	-4553.60	779.91

TARGETS									
Name	MD [ft]	TVD [ft]	North [ft]	East [ft]	Grid East [US ft]	Grid North [US ft]	Latitude	Longitude	Shape
SECTION 19 LINES		41.00	-25.72	-3032.58	3157293.83	1259018.03	40°02'34.890"N	104°56'17.470"W	polygon
1) JELTS 39C-19HZ BHL ON PLAT REV-1 (460'FSL & 210'FEL, SEC.19)	12445.22	7917.00	-4553.60	779.91	3161135.33	1254515.03	40°01'50.146"N	104°55'28.452"W	point
SEC. 19 HARDLINES (460' SETBACKS)		8041.00	-25.72	-3032.58	3157293.83	1259018.03	40°02'34.890"N	104°56'17.470"W	polygon

SURVEY PROGRAM - Ref Wellbore: JELTS 39C-19HZ PWB Ref Wellpath: JELTS 39C-19HZ (PERMIT REV-1) PWP				
Start MD [ft]	End MD [ft]	Positional Uncertainty Model	Log Name/Comment	Wellbore
16.00	8250.81	NaviTrak (Standard)		JELTS 39C-19HZ PWB
8250.81	12445.22	OnTrak (Standard)		JELTS 39C-19HZ PWB



Planned Wellpath Report

JELTS 39C-19HZ (PERMIT REV-1) PWP

Page 6 of 6



REFERENCE WELLPATH IDENTIFICATION			
Operator	KERR-MCGEE OIL & GAS ONSHORE LP	Slot	SLOT#20 JELTS 39C-19HZ (275'FNL & 908'FEL, SEC.19)
Area	COLORADO	Well	JELTS 39C-19HZ
Field	WELD COUNTY (KERR MCGEE)	Wellbore	JELTS 39C-19HZ PWB
Facility	SEC.19-T1N-R67W		

WELLPATH COMMENTS					
MD [ft]	Inclination [°]		Azimuth [°]	TVD [ft]	Comment
4977.85	10.000		73.580	4924.00	SUSSEX
7530.93	17.357		179.037	7467.00	SHARON SPRINGS
7560.52	20.315		179.037	7495.00	NIOBRARA A
7691.99	33.463		179.037	7612.00	NIOBRARA B CHALK TL
7817.04	45.967		179.037	7708.00	NIOBRARA C
8064.87	70.750		179.037	7837.00	FORT HAYS
8189.34	83.198		179.037	7865.00	CODELL