

Noble Energy Inc.

Weld County, CO

Sec 34, T7N, R64W, 6TH PM

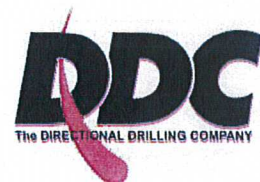
Dyer USX AB35-68-1HN

Wellbore #1

Survey: MWD Final

DDC Survey Report

20 March, 2012



Company:	Noble Energy Inc.	Local Co-ordinate Reference:	Well Dyer USX AB35-68-1HN
Project:	Weld County, CO	TVD Reference:	WELL @ 4895.0usft (H&P #323)
Site:	Sec 34, T7N, R64W, 6TH PM	MD Reference:	WELL @ 4895.0usft (H&P #323)
Well:	Dyer USX AB35-68-1HN	North Reference:	Grid
Wellbore:	Wellbore #1	Survey Calculation Method:	Minimum Curvature
Design:	Wellbore #1	Database:	EDM 5000.1 Single User Db

Project	Weld County, CO		
Map System:	US State Plane 1983	System Datum:	Mean Sea Level
Geo Datum:	North American Datum 1983		
Map Zone:	Colorado Northern Zone		

Site	Sec 34, T7N, R64W, 6TH PM		
Site Position:		Northing:	1,439,590.75 usft
From:	Lat/Long	Easting:	3,270,241.36 usft
Position Uncertainty:	0.0 usft	Slot Radius:	13-3/16 "
		Latitude:	40° 32' 9.636 N
		Longitude:	104° 31' 39.792 W
		Grid Convergence:	0.63 °

Well	Dyer USX AB35-68-1HN		
Well Position	+N/-S	0.0 usft	Northing:
	+E/-W	0.0 usft	Easting:
Position Uncertainty	0.0 usft	Wellhead Elevation:	usft
		Latitude:	40° 32' 9.780 N
		Longitude:	104° 31' 40.152 W
		Ground Level:	4,871.0 usft

Wellbore	Wellbore #1		
----------	-------------	--	--

Magnetics	Model Name	Sample Date	Declination (°)	Dip Angle (°)	Field Strength (nT)
	IGRF2010	2/24/2012	8.65	67.18	53,154

Design	Wellbore #1		
--------	-------------	--	--

Audit Notes:					
Version:	1.0	Phase:	ACTUAL	Tie On Depth:	0.0
Vertical Section:	Depth From (TVD) (usft)	+N/-S (usft)	+E/-W (usft)	Direction (°)	
	0.0	0.0	0.0	96.21	

Survey Program		Date	3/20/2012		
From (usft)	To (usft)	Survey (Wellbore)	Tool Name	Description	
879.0	11,361.0	MWD (Wellbore #1)	MWD default	MWD - Standard	

Measured Depth (usft)	Inclination (°)	Azimuth (°)	Vertical Depth (usft)	+N/-S (usft)	+E/-W (usft)	Vertical Section (usft)	Dogleg Rate (°/100usft)	Build Rate (°/100usft)	Turn Rate (°/100usft)
Tie In									
839.0	0.00	0.00	839.0	0.0	0.0	0.0	0.00	0.00	0.00
879.0	1.50	311.80	879.0	0.3	-0.4	-0.4	3.75	3.75	0.00
1,155.0	1.50	305.30	1,154.9	4.8	-6.0	-6.5	0.06	0.00	-2.36
1,440.0	1.70	300.90	1,439.8	9.2	-12.7	-13.6	0.08	0.07	-1.54
1,724.0	1.80	305.60	1,723.7	13.9	-19.9	-21.3	0.06	0.04	1.65
1,819.0	1.50	137.00	1,818.6	13.9	-20.3	-21.7	3.46	-0.32	-177.47
1,914.0	4.20	133.70	1,913.5	10.6	-16.9	-18.0	2.85	2.84	-3.47
2,009.0	5.10	133.40	2,008.2	5.3	-11.4	-11.9	0.95	0.95	-0.32
2,104.0	6.90	135.80	2,102.7	-1.7	-4.3	-4.1	1.91	1.89	2.53
2,199.0	9.00	139.90	2,196.8	-11.5	4.4	5.7	2.29	2.21	4.32

Company:	Noble Energy Inc.	Local Co-ordinate Reference:	Well Dyer USX AB35-68-1HN
Project:	Weld County, CO	TVD Reference:	WELL @ 4895.0usft (H&P #323)
Site:	Sec 34, T7N, R64W, 6TH PM	MD Reference:	WELL @ 4895.0usft (H&P #323)
Well:	Dyer USX AB35-68-1HN	North Reference:	Grid
Wellbore:	Wellbore #1	Survey Calculation Method:	Minimum Curvature
Design:	Wellbore #1	Database:	EDM 5000.1 Single User Db

Survey

Measured Depth (usft)	Inclination (°)	Azimuth (°)	Vertical Depth (usft)	+N/-S (usft)	+E/-W (usft)	Vertical Section (usft)	Dogleg Rate (°/100usft)	Build Rate (°/100usft)	Turn Rate (°/100usft)
2,294.0	11.00	145.30	2,290.3	-24.6	14.4	17.0	2.32	2.11	5.68
2,388.0	13.70	145.10	2,382.1	-41.1	25.9	30.2	2.87	2.87	-0.21
2,483.0	15.60	146.40	2,474.0	-61.0	39.4	45.7	2.03	2.00	1.37
2,578.0	15.60	146.50	2,565.5	-82.3	53.5	62.1	0.03	0.00	0.11
2,673.0	15.50	147.80	2,657.1	-103.7	67.3	78.1	0.38	-0.11	1.37
2,768.0	16.50	146.40	2,748.4	-125.7	81.5	94.7	1.13	1.05	-1.47
2,863.0	15.00	145.50	2,839.8	-147.0	96.0	111.3	1.60	-1.58	-0.95
2,958.0	15.20	143.20	2,931.5	-167.1	110.4	127.8	0.66	0.21	-2.42
3,053.0	16.50	144.30	3,022.9	-188.1	125.7	145.3	1.40	1.37	1.16
3,148.0	16.10	143.20	3,114.1	-209.6	141.5	163.3	0.53	-0.42	-1.16
3,243.0	14.90	143.00	3,205.6	-229.9	156.7	180.7	1.26	-1.26	-0.21
3,337.0	16.40	147.80	3,296.2	-250.8	171.1	197.2	2.11	1.60	5.11
3,432.0	15.40	148.50	3,387.5	-272.9	184.8	213.3	1.07	-1.05	0.74
3,527.0	14.90	144.10	3,479.2	-293.5	198.6	229.2	1.32	-0.53	-4.63
3,622.0	14.90	143.40	3,571.0	-313.2	213.0	245.6	0.19	0.00	-0.74
3,717.0	14.30	143.60	3,663.0	-332.5	227.3	261.9	0.63	-0.63	0.21
3,813.0	15.10	145.70	3,755.8	-352.3	241.3	278.0	1.00	0.83	2.19
3,908.0	16.40	147.80	3,847.3	-373.9	255.5	294.4	1.49	1.37	2.21
4,003.0	17.40	147.80	3,938.2	-397.3	270.2	311.6	1.05	1.05	0.00
4,098.0	17.50	146.50	4,028.8	-421.2	285.6	329.5	0.42	0.11	-1.37
Crossed Section Line @ 4193' MD / 4119' TVD									
4,193.0	18.50	146.90	4,119.1	-445.7	301.7	348.2	1.06	1.05	0.42
4,288.0	17.30	146.50	4,209.5	-470.2	317.8	366.8	1.27	-1.26	-0.42
4,383.0	15.90	146.00	4,300.6	-492.7	332.8	384.2	1.48	-1.47	-0.53
4,478.0	13.20	146.70	4,392.5	-512.6	346.1	399.5	2.85	-2.84	0.74
4,573.0	14.30	147.80	4,484.8	-531.6	358.3	413.7	1.19	1.16	1.16
4,668.0	12.20	148.80	4,577.3	-550.1	369.7	427.1	2.22	-2.21	1.05
4,763.0	13.30	146.70	4,669.9	-567.8	380.9	440.1	1.26	1.16	-2.21
4,858.0	11.70	147.90	4,762.7	-585.1	392.1	453.1	1.71	-1.68	1.26
4,953.0	9.30	146.00	4,856.1	-599.6	401.5	464.0	2.55	-2.53	-2.00
5,048.0	7.10	147.80	4,950.1	-611.0	408.9	472.6	2.33	-2.32	1.89
5,143.0	5.40	154.60	5,044.5	-620.0	413.9	478.6	1.95	-1.79	7.16
5,238.0	4.00	160.40	5,139.2	-627.1	417.0	482.4	1.55	-1.47	6.11
5,334.0	3.30	163.10	5,235.0	-632.9	418.9	484.9	0.75	-0.73	2.81
5,429.0	2.40	167.80	5,329.9	-637.5	420.1	486.6	0.98	-0.95	4.95
5,524.0	1.70	165.90	5,424.8	-640.8	420.9	487.7	0.74	-0.74	-2.00
5,619.0	1.80	176.40	5,519.8	-643.7	421.3	488.5	0.35	0.11	11.05
5,713.0	0.30	80.30	5,613.8	-645.1	421.6	489.0	1.97	-1.60	-102.23
5,808.0	0.60	77.80	5,708.8	-644.9	422.4	489.7	0.32	0.32	-2.63
5,903.0	0.70	50.60	5,803.7	-644.5	423.3	490.5	0.34	0.11	-28.63
5,999.0	0.70	52.30	5,899.7	-643.7	424.2	491.4	0.02	0.00	1.77
6,094.0	0.80	59.00	5,994.7	-643.0	425.3	492.3	0.14	0.11	7.05
6,189.0	0.40	89.20	6,089.7	-642.7	426.2	493.2	0.52	-0.42	31.79

Company:	Noble Energy Inc.	Local Co-ordinate Reference:	Well Dyer USX AB35-68-1HN
Project:	Weld County, CO	TVD Reference:	WELL @ 4895.0usft (H&P #323)
Site:	Sec 34, T7N, R64W, 6TH PM	MD Reference:	WELL @ 4895.0usft (H&P #323)
Well:	Dyer USX AB35-68-1HN	North Reference:	Grid
Wellbore:	Wellbore #1	Survey Calculation Method:	Minimum Curvature
Design:	Wellbore #1	Database:	EDM 5000.1 Single User Db

Survey									
Measured Depth (usft)	Inclination (°)	Azimuth (°)	Vertical Depth (usft)	+N/-S (usft)	+E/-W (usft)	Vertical Section (usft)	Dogleg Rate (°/100usft)	Build Rate (°/100usft)	Turn Rate (°/100usft)
6,220.0	0.40	87.10	6,120.7	-642.7	426.4	493.4	0.05	0.00	-6.77
6,278.0	0.80	91.90	6,178.7	-642.7	427.0	494.0	0.69	0.69	8.28
6,310.0	3.30	89.60	6,210.7	-642.7	428.1	495.1	7.82	7.81	-7.19
6,342.0	6.40	89.10	6,242.6	-642.7	430.8	497.8	9.69	9.69	-1.56
6,374.0	9.20	85.50	6,274.3	-642.4	435.2	502.1	8.88	8.75	-11.25
6,405.0	11.50	85.40	6,304.8	-642.0	440.7	507.6	7.42	7.42	-0.32
6,437.0	14.10	85.20	6,336.0	-641.4	447.8	514.5	8.13	8.13	-0.63
6,469.0	16.30	87.80	6,366.9	-640.9	456.2	522.8	7.20	6.88	8.13
6,500.0	18.10	92.80	6,396.5	-641.0	465.3	531.9	7.51	5.81	16.13
6,532.0	20.40	95.40	6,426.7	-641.7	475.8	542.5	7.67	7.19	8.13
6,564.0	23.00	94.00	6,456.4	-642.7	487.6	554.3	8.28	8.13	-4.38
6,595.0	25.20	91.70	6,484.7	-643.3	500.3	566.9	7.72	7.10	-7.42
6,627.0	27.40	91.70	6,513.4	-643.7	514.4	581.1	6.88	6.88	0.00
6,659.0	29.60	90.10	6,541.5	-644.0	529.7	596.3	7.28	6.88	-5.00
6,690.0	30.90	88.30	6,568.3	-643.7	545.3	611.8	5.11	4.19	-5.81
6,722.0	32.60	88.90	6,595.5	-643.3	562.1	628.4	5.40	5.31	1.88
6,753.0	34.70	90.80	6,621.3	-643.3	579.3	645.5	7.58	6.77	6.13
6,785.0	37.40	90.30	6,647.2	-643.5	598.2	664.2	8.49	8.44	-1.56
6,817.0	39.20	89.90	6,672.3	-643.5	618.0	684.0	5.68	5.63	-1.25
6,848.0	41.20	89.20	6,696.0	-643.4	638.0	703.8	6.61	6.45	-2.26
6,880.0	43.70	89.90	6,719.6	-643.2	659.6	725.3	7.95	7.81	2.19
6,912.0	46.60	89.20	6,742.1	-643.0	682.3	747.8	9.19	9.06	-2.19
6,943.0	48.50	89.80	6,763.1	-642.8	705.1	770.5	6.29	6.13	1.94
6,975.0	51.10	88.70	6,783.7	-642.5	729.6	794.8	8.54	8.13	-3.44
7,007.0	53.50	88.30	6,803.3	-641.8	754.9	819.9	7.56	7.50	-1.25
7,039.0	55.30	87.50	6,821.9	-640.9	780.9	845.6	5.98	5.63	-2.50
7,070.0	57.50	87.10	6,839.1	-639.6	806.7	871.1	7.18	7.10	-1.29
7,102.0	60.20	86.80	6,855.6	-638.2	834.0	898.2	8.48	8.44	-0.94
7,134.0	63.50	87.70	6,870.7	-636.8	862.2	926.0	10.61	10.31	2.81
7,165.0	66.30	87.70	6,883.9	-635.7	890.2	953.8	9.03	9.03	0.00
7,197.0	68.30	86.90	6,896.2	-634.3	919.7	983.0	6.66	6.25	-2.50
7,229.0	70.00	87.30	6,907.6	-632.8	949.6	1,012.5	5.44	5.31	1.25
7,260.0	72.60	88.30	6,917.5	-631.7	978.9	1,041.5	8.93	8.39	3.23
7,292.0	74.70	89.40	6,926.5	-631.1	1,009.6	1,072.0	7.34	6.56	3.44
7,324.0	76.40	89.60	6,934.5	-630.8	1,040.6	1,102.7	5.35	5.31	0.63
7,355.0	78.30	88.50	6,941.3	-630.3	1,070.9	1,132.8	7.04	6.13	-3.55
7,361.0	78.60	88.70	6,942.5	-630.2	1,076.7	1,138.6	5.97	5.00	3.33
7,427.0	82.40	88.70	6,953.4	-628.7	1,141.8	1,203.1	5.76	5.76	0.00
7,459.0	84.60	88.90	6,957.0	-628.0	1,173.6	1,234.6	6.90	6.88	0.63
7,490.0	86.40	89.60	6,959.5	-627.6	1,204.5	1,265.3	6.23	5.81	2.26
7,522.0	89.00	90.10	6,960.8	-627.5	1,236.5	1,297.1	8.27	8.13	1.56
7,554.0	90.00	91.20	6,961.0	-627.9	1,268.5	1,328.9	4.65	3.13	3.44
7,649.0	88.90	90.80	6,961.9	-629.5	1,363.4	1,423.5	1.23	-1.16	-0.42

Company:	Noble Energy Inc.	Local Co-ordinate Reference:	Well Dyer USX AB35-68-1HN
Project:	Weld County, CO	TVD Reference:	WELL @ 4895.0usft (H&P #323)
Site:	Sec 34, T7N, R64W, 6TH PM	MD Reference:	WELL @ 4895.0usft (H&P #323)
Well:	Dyer USX AB35-68-1HN	North Reference:	Grid
Wellbore:	Wellbore #1	Survey Calculation Method:	Minimum Curvature
Design:	Wellbore #1	Database:	EDM 5000.1 Single User Db

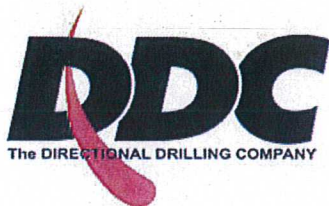
Survey									
Measured Depth (usft)	Inclination (°)	Azimuth (°)	Vertical Depth (usft)	+N/-S (usft)	+E/-W (usft)	Vertical Section (usft)	Dogleg Rate (°/100usft)	Build Rate (°/100usft)	Turn Rate (°/100usft)
7,744.0	91.80	90.50	6,961.4	-630.6	1,458.4	1,518.1	3.07	3.05	-0.32
7,839.0	91.30	90.50	6,958.8	-631.4	1,553.4	1,612.6	0.53	-0.53	0.00
7,934.0	91.10	90.50	6,956.8	-632.3	1,648.4	1,707.1	0.21	-0.21	0.00
8,029.0	91.80	90.50	6,954.4	-633.1	1,743.3	1,801.6	0.74	0.74	0.00
8,124.0	90.60	90.40	6,952.4	-633.9	1,838.3	1,896.1	1.27	-1.26	-0.11
8,219.0	88.70	90.30	6,953.0	-634.4	1,933.3	1,990.6	2.00	-2.00	-0.11
8,314.0	88.60	86.90	6,955.2	-632.1	2,028.2	2,084.7	3.58	-0.11	-3.58
8,409.0	90.50	87.10	6,956.0	-627.1	2,123.1	2,178.5	2.01	2.00	0.21
8,504.0	89.80	87.10	6,955.7	-622.3	2,218.0	2,272.3	0.74	-0.74	0.00
8,599.0	92.40	87.70	6,953.9	-618.0	2,312.8	2,366.1	2.81	2.74	0.63
8,694.0	92.00	88.30	6,950.3	-614.7	2,407.7	2,460.1	0.76	-0.42	0.63
8,789.0	90.80	88.70	6,947.9	-612.2	2,502.6	2,554.2	1.33	-1.26	0.42
8,884.0	89.00	88.30	6,948.1	-609.7	2,597.6	2,648.3	1.94	-1.89	-0.42
8,979.0	91.90	88.30	6,947.4	-606.9	2,692.6	2,742.4	3.05	3.05	0.00
9,011.0	91.60	88.30	6,946.4	-606.0	2,724.5	2,774.1	0.94	-0.94	0.00
9,042.0	91.80	88.70	6,945.5	-605.2	2,755.5	2,804.8	1.44	0.65	1.29
9,074.0	91.80	88.70	6,944.5	-604.4	2,787.5	2,836.5	0.00	0.00	0.00
9,169.0	90.50	88.00	6,942.5	-601.7	2,882.4	2,930.6	1.55	-1.37	-0.74
9,264.0	89.30	88.20	6,942.7	-598.6	2,977.4	3,024.6	1.28	-1.26	0.21
9,359.0	89.10	88.50	6,944.0	-595.8	3,072.3	3,118.7	0.38	-0.21	0.32
9,454.0	89.40	87.10	6,945.3	-592.2	3,167.2	3,212.7	1.51	0.32	-1.47
9,549.0	89.50	87.50	6,946.2	-587.7	3,262.1	3,306.5	0.43	0.11	0.42
9,644.0	90.00	88.00	6,946.6	-584.0	3,357.0	3,400.5	0.74	0.53	0.53
9,739.0	90.40	87.80	6,946.3	-580.5	3,452.0	3,494.5	0.47	0.42	-0.21
9,833.0	91.40	88.20	6,944.8	-577.2	3,545.9	3,587.5	1.15	1.06	0.43
9,929.0	90.00	87.30	6,943.6	-573.4	3,641.8	3,682.5	1.73	-1.46	-0.94
10,024.0	89.50	86.90	6,944.0	-568.6	3,736.7	3,776.3	0.67	-0.53	-0.42
10,119.0	90.00	87.30	6,944.5	-563.8	3,831.6	3,870.1	0.67	0.53	0.42
10,213.0	90.10	88.00	6,944.4	-560.0	3,925.5	3,963.0	0.75	0.11	0.74
10,308.0	90.20	87.50	6,944.1	-556.2	4,020.4	4,057.0	0.54	0.11	-0.53
10,403.0	89.90	88.30	6,944.0	-552.8	4,115.4	4,151.0	0.90	-0.32	0.84
10,498.0	89.90	88.20	6,944.2	-549.9	4,210.3	4,245.1	0.11	0.00	-0.11
10,594.0	91.20	88.90	6,943.3	-547.4	4,306.3	4,340.2	1.54	1.35	0.73
10,689.0	92.70	89.80	6,940.1	-546.4	4,401.2	4,434.5	1.84	1.58	0.95
10,784.0	92.60	90.50	6,935.7	-546.6	4,496.1	4,528.9	0.74	-0.11	0.74
10,847.0	92.00	90.30	6,933.1	-547.0	4,559.1	4,591.5	1.00	-0.95	-0.32
10,879.0	90.60	91.30	6,932.4	-547.5	4,591.0	4,623.3	5.38	-4.38	3.13
10,974.0	88.90	91.90	6,932.8	-550.1	4,686.0	4,718.0	1.90	-1.79	0.63
11,069.0	90.30	91.70	6,933.5	-553.1	4,781.0	4,812.7	1.49	1.47	-0.21
11,164.0	91.40	91.90	6,932.1	-556.1	4,875.9	4,907.4	1.18	1.16	0.21
11,259.0	88.10	92.00	6,932.5	-559.3	4,970.8	5,002.2	3.48	-3.47	0.11
11,308.0	87.90	92.20	6,934.2	-561.1	5,019.8	5,051.0	0.58	-0.41	0.41
TD @ 11361' MD / 6936' TVD									
11,361.0	87.90	92.20	6,936.1	-563.2	5,072.7	5,103.8	0.00	0.00	0.00

Company:	Noble Energy Inc.	Local Co-ordinate Reference:	Well Dyer USX AB35-68-1HN
Project:	Weld County, CO	TVD Reference:	WELL @ 4895.0usft (H&P #323)
Site:	Sec 34, T7N, R64W, 6TH PM	MD Reference:	WELL @ 4895.0usft (H&P #323)
Well:	Dyer USX AB35-68-1HN	North Reference:	Grid
Wellbore:	Wellbore #1	Survey Calculation Method:	Minimum Curvature
Design:	Wellbore #1	Database:	EDM 5000.1 Single User Db

Survey									
Measured Depth (usft)	Inclination (°)	Azimuth (°)	Vertical Depth (usft)	+N/-S (usft)	+E/-W (usft)	Vertical Section (usft)	Dogleg Rate (°/100usft)	Build Rate (°/100usft)	Turn Rate (°/100usft)

Survey Annotations				
Measured Depth (usft)	Vertical Depth (usft)	Local Coordinates		Comment
		+N/-S (usft)	+E/-W (usft)	
839.0	839.0	0.0	0.0	Tie In
4,193.0	4,119.1	-445.7	301.7	Crossed Section Line @ 4193' MD / 4119' TVD
11,361.0	6,936.1	-563.2	5,072.7	TD @ 11361' MD / 6936' TVD

Checked By: _____ Approved By: _____ Date: _____



Survey Certification Sheet

Noble Energy
Company

RM-12175
Job Number

3/20/12
Date

Sec 34, T7N, R64W, 6th PM
Lease

Dyer USX AB35-68-1HN
Well Name

Weld, CO
County & State

Surveyed from a depth of:

839 feet to 11361 feet MD

Type of Survey:

MWD

Directional Supervisor/Surveyor:

Boyd Wolff

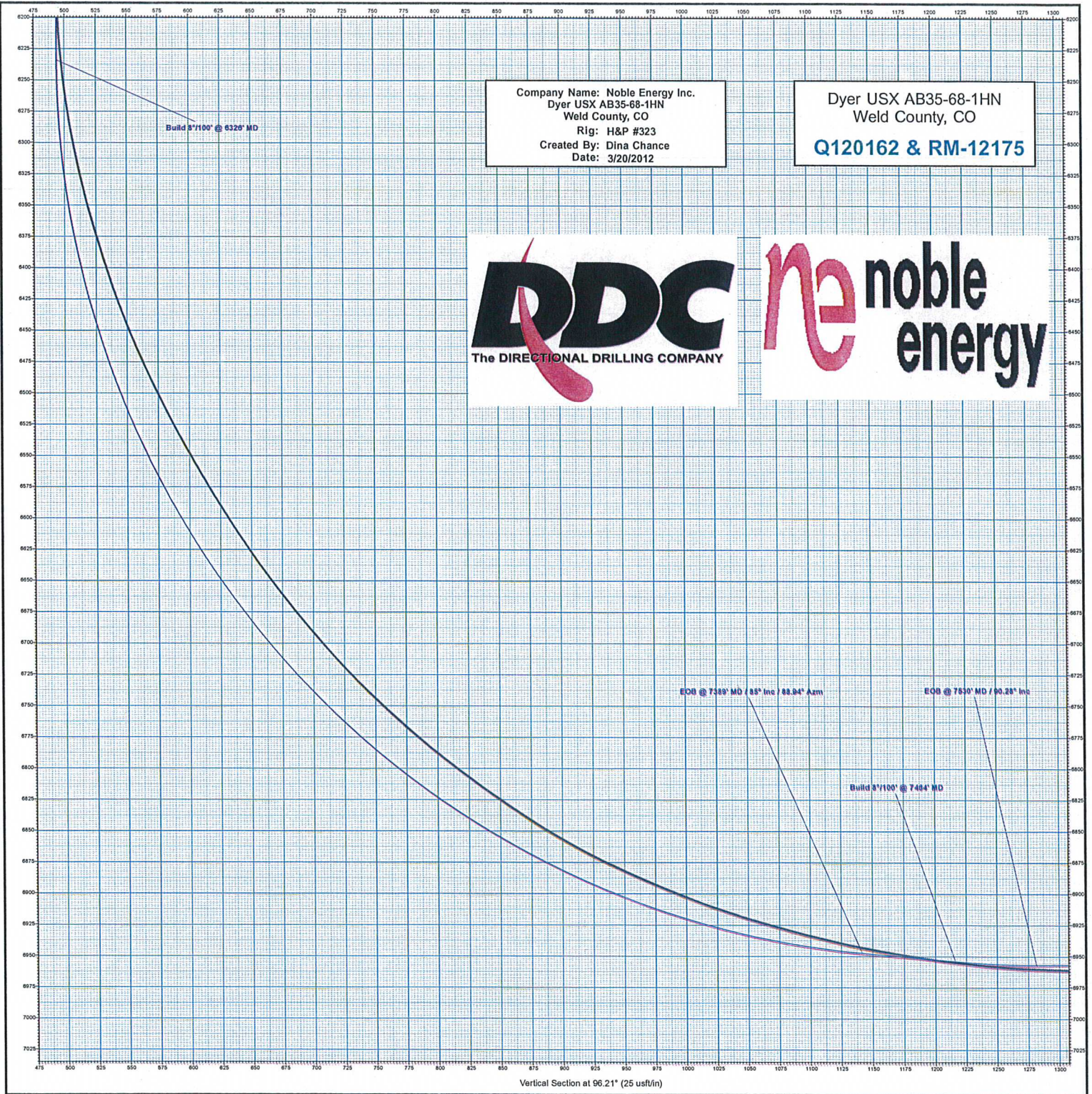
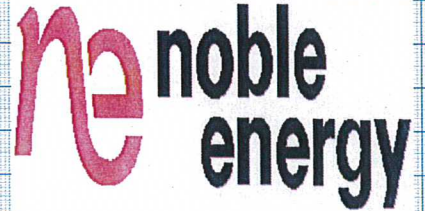
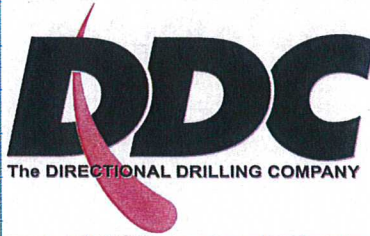
The data and calculations for this survey have been checked by me and conform to the standards and procedures set forth by **The Directional Drilling Company (DDC)**. This report represents a true and correct Directional survey of this well based on the original data obtained at the well site. Wellbore Coordinates are calculated using minimum curvature.

Digitally signed by Larry Wright
DN: cn=Larry Wright, o=The
Directional Drilling Company,
ou=GM of Guidance Services,
email=larryw@directionaldrillers.c
om, c=US
Date: 2012.03.20 12:15:28 -05'00'

Larry Wright
MWD General Manager

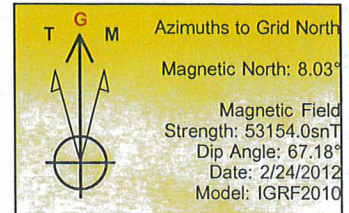
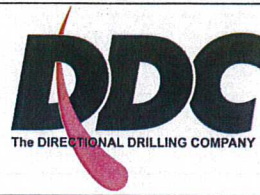
Company Name: Noble Energy Inc.
Dyer USX AB35-68-1HN
Weld County, CO
Rig: H&P #323
Created By: Dina Chance
Date: 3/20/2012

Dyer USX AB35-68-1HN
Weld County, CO
Q120162 & RM-12175

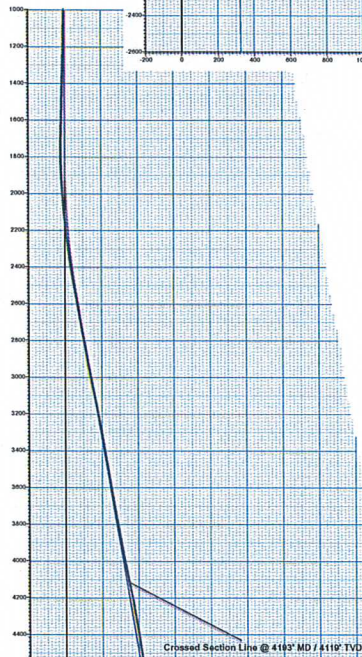
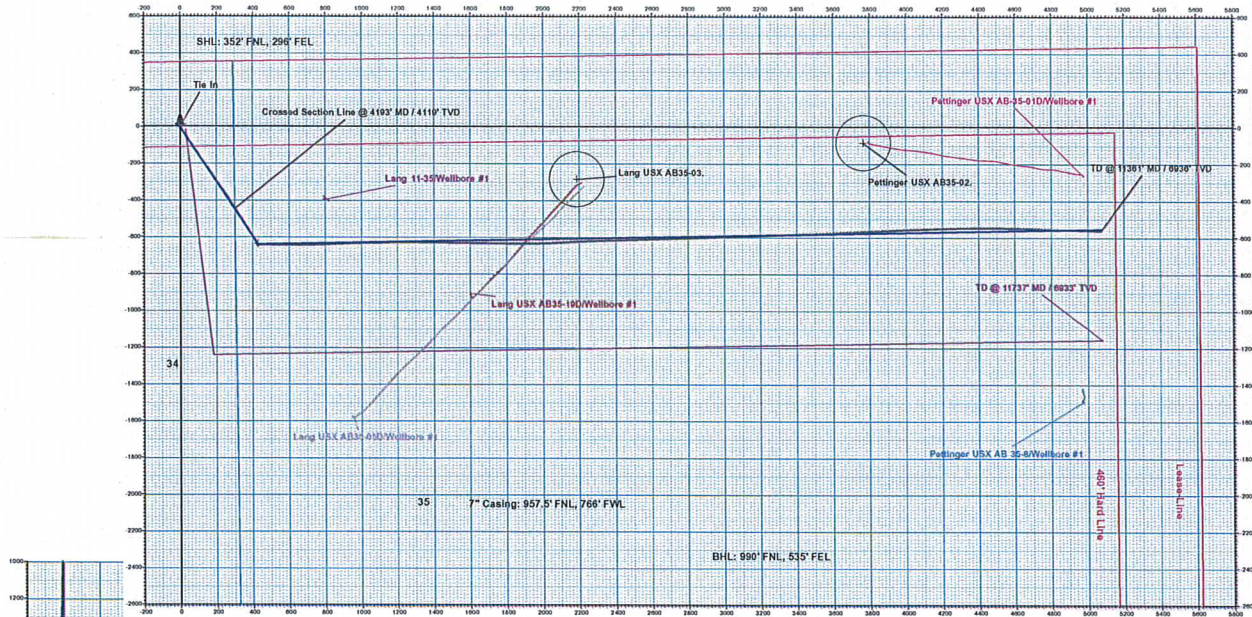


Company Name: Noble Energy Inc.
Dyer USX AB35-68-1HN
Weld County, CO
Rig: H&P #323
Created By: Dina Chance
Date: 3/20/2012

noble energy



Dyer USX AB35-68-1HN
Weld County, CO
Q120162 & RM-12175



PROJECT DETAILS: Weld County, CO

Geodetic System: US State Plane 1983
Datum: North American Datum 1983
Ellipsoid: GRS 1980
Zone: Colorado Northern Zone
System Datum: Mean Sea Level

WELL DETAILS: Dyer USX AB35-68-1HN

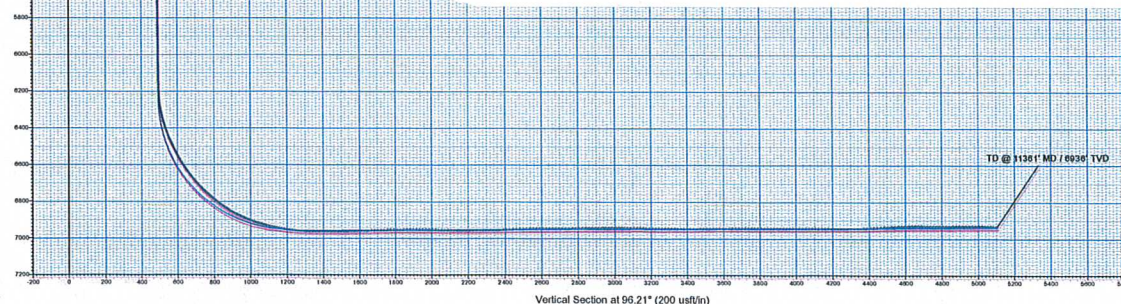
+N-S	+E-W	Ground Level:	4871.0
0.0	0.0	North	1439605.01
		East	3270213.40
		Latitude	40° 32' 9.780 N
		Longitude	104° 31' 40.152 W

ANNOTATIONS

MD	Inc	Asl	TVD	+N-S	+E-W	Vsect	Departure	Annotation
4193.0	18.50	146.90	4119.1	-445.7	301.7	348.2	585.2	Crossed Section Line @ 4193' MD / 4119' TVD
11361.0	87.90	92.20	6936.1	-552.3	5073.7	5103.8	5477.3	TD @ 11361' MD / 6936' TVD

DESIGN TARGET DETAILS

Name	TVD	+N-S	+E-W	North	East	Latitude	Longitude
Lang USX AB35-03	0.0	-285.0	2185.2	1439319.39	3272388.61	40° 32' 6.720 N	104° 31' 11.892 W
- plan miss target center by 2203.8uvt at 0.0uvt MD (0.0 TVD, 0.0 N, 0.0 E)							
Pettinger USX AB35-02	0.0	-35.0	3764.7	1439511.06	3273903.05	40° 32' 8.520 N	104° 30' 51.408 W
- plan miss target center by 3765.8uvt at 0.0uvt MD (0.0 TVD, 0.0 N, 0.0 E)							
Tie In	839.0	0.0	0.0	1439605.01	3270213.40	40° 32' 9.780 N	104° 31' 40.152 W
- plan hit target center							
VP Dyer USX AB35-68-1HN	5420.0	-433.0	427.0	1431967.01	3270640.40	40° 32' 3.429 N	104° 31' 34.713 W
- plan hit target center							
PBHL Dyer USX AB35-68-1HN	6936.1	-552.3	5073.5	1439052.73	3275286.94	40° 32' 3.768 N	104° 30' 34.524 W
- plan hit target center							



Vertical Section at 96.21° (200 uvt/in)