

Bill Barrett Corp. (II)

Weld Co., CO (NAD 83)

Sec.23-T6N-R62W

Pappenheim 6-62-26-8H

STK1

Plan: STK1 Plan #2 06May13 RG

Standard Planning Report

06 May, 2013





Bill Barrett Corp. (II)
 Project: Weld Co., CO (NAD 83)
 Site: Sec.23-T6N-R62W
 Well: Pappenheim 6-62-26-8H
 Wellbore: STK1
 Design: STK1 Plan #2 06May13 RG
 Lat: 40° 27' 58.90 N
 Long: 104° 17' 50.71 W
 Pad GL: 4735.00
 RKB:16' KB @ 4751.00ft (Cade 24)



SECTION DETAILS

MD	Inc	Azi	TVD	+N/-S	+E/-W	Dleg	TFace	VSec	Annotation
8677.00	89.400	85.30	6323.97	-821.34	2266.74	0.00	0.00	2381.22	Tie In from OH @ 8677'
8680.00	89.467	85.33	6324.00	-821.10	2269.73	2.45	24.12	2384.11	Start DLS 4.00 TFO 165.00
8710.00	88.308	85.64	6324.59	-818.74	2299.63	4.00	165.00	2413.03	Start 30.00 hold at 8710.00 MD
8740.00	88.308	85.64	6325.47	-816.46	2329.53	0.00	0.00	2441.95	Start DLS 4.00 TFO 69.52
8828.67	89.551	88.96	6327.13	-812.28	2418.07	4.00	69.52	2528.11	Start 1641.74 hold at 8828.67 MD
10470.41	89.551	88.96	6340.00	-782.58	4059.49	0.00	0.00	4134.23	TD at 10470.41

PROJECT DETAILS: Weld Co., CO (NAD 83)

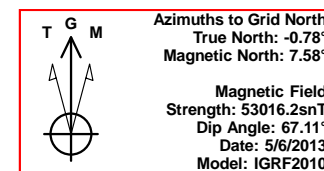
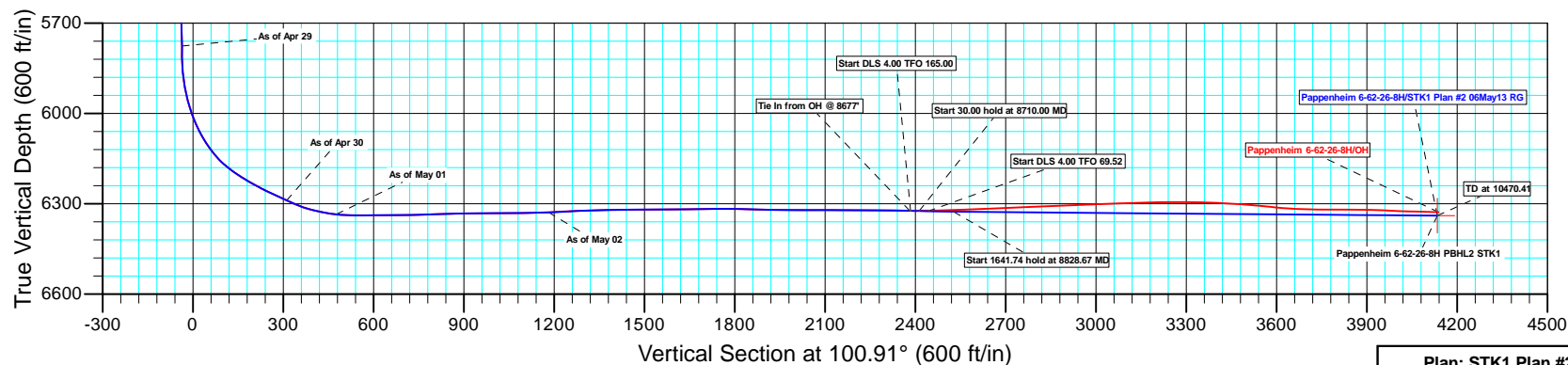
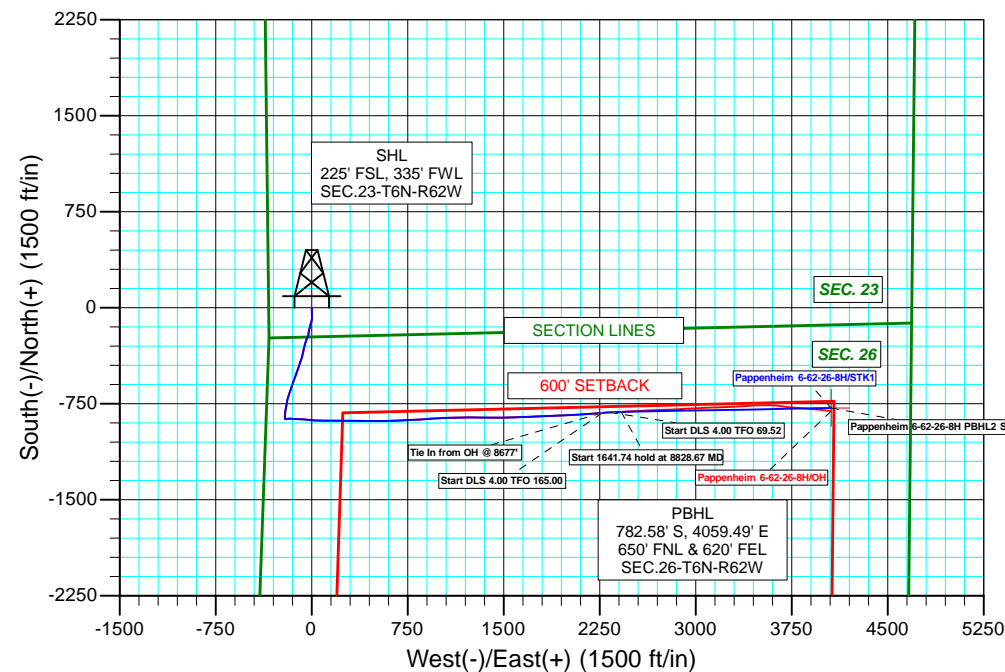
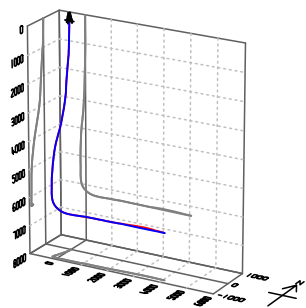
Geodetic System: US State Plane 1983
 Datum: North American Datum 1983
 Ellipsoid: GRS 1980
 Zone: Colorado Northern Zone
 System Datum: Mean Sea Level

WELL DETAILS: Pappenheim 6-62-26-8H

+N/-S	+E/-W	Northing	Ground Level: Easting	4735.00 Latitude	104° 17' 50.71 W Longitude	Slot
0.00	0.00	1415004.16	3334592.88	40° 27' 58.90 N	104° 17' 50.71 W	

WELLBORE TARGET DETAILS (LAT/LONG)

Name	TVD	+N/-S	+E/-W	Latitude	Longitude	Shape
Pappenheim 6-62-26-8H PBHL2 STK1	6340.00	-782.58	4059.49	40° 27' 50.62 N	104° 16' 58.33 W	Point



Plan: STK1 Plan #2 06May13 RG (Pappenheim 6-62-26-8H/STK1)

Created By: Rolando Garza

Date: 13:57, May 06 2013

Database:	CompassVM	Local Co-ordinate Reference:	Well Pappenheim 6-62-26-8H
Company:	Bill Barrett Corp. (II)	TVD Reference:	RKB:16' @ 4751.00ft (Cade 24)
Project:	Weld Co., CO (NAD 83)	MD Reference:	RKB:16' @ 4751.00ft (Cade 24)
Site:	Sec.23-T6N-R62W	North Reference:	Grid
Well:	Pappenheim 6-62-26-8H	Survey Calculation Method:	Minimum Curvature
Wellbore:	STK1		
Design:	STK1 Plan #2 06May13 RG		

Project	Weld Co., CO (NAD 83)		
Map System:	US State Plane 1983	System Datum:	Mean Sea Level
Geo Datum:	North American Datum 1983		
Map Zone:	Colorado Northern Zone		

Site	Sec.23-T6N-R62W			
Site Position:		Northing:	1,415,004.17 usft	Latitude: 40° 27' 58.90 N
From:	Lat/Long	Easting:	3,334,592.88 usft	Longitude: 104° 17' 50.71 W
Position Uncertainty:	0.00 ft	Slot Radius:	1.10 ft	Grid Convergence: 0.78 °

Well	Pappenheim 6-62-26-8H			
Well Position	+N/-S	-0.01 ft	Northing:	1,415,004.16 usft
	+E/-W	0.00 ft	Easting:	3,334,592.88 usft
Position Uncertainty		0.00 ft	Wellhead Elevation:	Ground Level: 4,735.00 ft

Wellbore	STK1				
Magnetics	Model Name	Sample Date	Declination (°)	Dip Angle (°)	Field Strength (nT)
	IGRF2010	5/6/2013	8.36	67.11	53,016

Design	STK1 Plan #2 06May13 RG			
Audit Notes:				
Version:	Phase:	PLAN	Tie On Depth:	8,677.00
Vertical Section:	Depth From (TVD) (ft)	+N/-S (ft)	+E/-W (ft)	Direction (°)
	0.00	0.00	0.00	100.91

Plan Sections										
Measured Depth (ft)	Inclination (°)	Azimuth (°)	Vertical Depth (ft)	+N/-S (ft)	+E/-W (ft)	Dogleg Rate (°/100ft)	Build Rate (°/100ft)	Turn Rate (°/100ft)	TFO (°)	Target
8,677.00	89.400	85.30	6,323.97	-821.34	2,266.74	0.00	0.00	0.00	0.00	
8,680.00	89.467	85.33	6,324.00	-821.10	2,269.73	2.45	2.23	1.00	24.12	
8,710.00	88.308	85.64	6,324.59	-818.74	2,299.63	4.00	-3.86	1.04	165.00	
8,740.00	88.308	85.64	6,325.47	-816.46	2,329.53	0.00	0.00	0.00	0.00	
8,828.67	89.551	88.96	6,327.13	-812.28	2,418.07	4.00	1.40	3.75	69.52	
10,470.41	89.551	88.96	6,340.00	-782.58	4,059.49	0.00	0.00	0.00	0.00	Pappenheim 6-62-26-

Database: CompassVM
Company: Bill Barrett Corp. (II)
Project: Weld Co., CO (NAD 83)
Site: Sec.23-T6N-R62W
Well: Pappenheim 6-62-26-8H
Wellbore: STK1
Design: STK1 Plan #2 06May13 RG

Local Co-ordinate Reference:
TVD Reference:
MD Reference:
North Reference:
Survey Calculation Method:

Well Pappenheim 6-62-26-8H
 RKB:16' @ 4751.00ft (Cade 24)
 RKB:16' @ 4751.00ft (Cade 24)
 Grid
 Minimum Curvature

Planned Survey

Measured Depth (ft)	Inclination (°)	Azimuth (°)	Vertical Depth (ft)	+N/-S (ft)	+E/-W (ft)	Vertical Section (ft)	Dogleg Rate (°/100ft)	Build Rate (°/100ft)	Turn Rate (°/100ft)
0.00	0.000	0.00	0.00	0.00	0.00	0.00	0.00	0.00	0.00
887.00	6.700	177.60	884.98	-51.76	2.17	11.93	0.76	0.76	0.00
979.00	7.000	178.60	976.32	-62.72	2.53	14.36	0.35	0.33	1.09
1,071.00	7.100	177.20	1,067.63	-74.01	2.95	16.90	0.22	0.11	-1.52
1,163.00	6.900	189.70	1,158.95	-85.13	2.29	18.36	1.67	-0.22	13.59
1,256.00	7.100	193.10	1,251.25	-96.24	0.05	18.26	0.49	0.22	3.66
1,348.00	7.500	193.80	1,342.51	-107.61	-2.67	17.74	0.45	0.43	0.76
1,442.00	8.000	194.50	1,435.65	-119.90	-5.77	17.02	0.54	0.53	0.74
1,536.00	8.000	193.60	1,528.73	-132.59	-8.95	16.31	0.13	0.00	-0.96
1,662.00	7.200	191.40	1,653.63	-148.85	-12.57	15.83	0.68	-0.63	-1.75
1,757.00	6.800	195.80	1,747.92	-160.10	-15.28	15.30	0.70	-0.42	4.63
1,851.00	6.900	193.40	1,841.25	-170.95	-18.10	14.58	0.32	0.11	-2.55
1,946.00	6.200	193.70	1,935.63	-181.48	-20.64	14.08	0.74	-0.74	0.32
2,041.00	5.200	190.80	2,030.16	-190.69	-22.66	13.84	1.10	-1.05	-3.05
2,135.00	4.700	178.10	2,123.81	-198.73	-23.33	14.70	1.28	-0.53	-13.51
2,230.00	5.200	188.20	2,218.46	-206.88	-23.82	15.77	1.06	0.53	10.63
2,324.00	4.400	189.60	2,312.13	-214.65	-25.03	16.05	0.86	-0.85	1.49
2,419.00	5.500	209.80	2,406.78	-222.19	-27.90	14.66	2.15	1.16	21.26
2,513.00	8.000	207.10	2,500.12	-231.93	-33.12	11.38	2.68	2.66	-2.87
2,608.00	9.100	202.00	2,594.06	-244.78	-38.94	8.09	1.41	1.16	-5.37
2,702.00	10.200	197.40	2,686.73	-259.61	-44.22	5.72	1.43	1.17	-4.89
2,797.00	12.200	196.10	2,779.92	-277.29	-49.52	3.86	2.12	2.11	-1.37
2,892.00	14.500	194.30	2,872.35	-298.46	-55.24	2.25	2.46	2.42	-1.89
2,987.00	15.500	194.90	2,964.11	-322.25	-61.44	0.66	1.07	1.05	0.63
3,082.00	15.400	192.20	3,055.68	-346.85	-67.37	-0.51	0.76	-0.11	-2.84
3,176.00	15.000	190.80	3,146.39	-371.00	-72.29	-0.76	0.58	-0.43	-1.49
3,271.00	15.200	196.70	3,238.11	-395.00	-78.17	-2.00	1.63	0.21	6.21
3,366.00	14.900	201.00	3,329.86	-418.33	-86.13	-5.39	1.22	-0.32	4.53
3,460.00	16.700	199.30	3,420.30	-442.37	-94.92	-9.48	1.98	1.91	-1.81
3,555.00	18.800	198.70	3,510.78	-469.75	-104.34	-13.55	2.22	2.21	-0.63
3,649.00	20.800	199.20	3,599.21	-499.86	-114.69	-18.01	2.14	2.13	0.53
3,744.00	22.300	199.30	3,687.57	-532.81	-126.19	-23.07	1.58	1.58	0.11
3,839.00	20.900	199.80	3,775.90	-565.76	-137.89	-28.32	1.49	-1.47	0.53
3,933.00	20.000	199.40	3,863.97	-596.70	-148.91	-33.28	0.97	-0.96	-0.43
4,028.00	18.000	199.50	3,953.79	-625.86	-159.21	-37.87	2.11	-2.11	0.11
4,122.00	15.900	198.70	4,043.70	-651.75	-168.18	-41.79	2.25	-2.23	-0.85
4,217.00	13.600	199.80	4,135.57	-674.59	-176.14	-45.28	2.44	-2.42	1.16
4,311.00	13.000	197.10	4,227.05	-695.09	-182.99	-48.13	0.92	-0.64	-2.87
4,406.00	12.700	189.50	4,319.67	-715.61	-187.86	-49.02	1.81	-0.32	-8.00
4,501.00	11.800	191.20	4,412.51	-735.44	-191.47	-48.82	1.02	-0.95	1.79
4,595.00	10.200	194.00	4,504.78	-752.94	-195.35	-49.31	1.79	-1.70	2.98
4,690.00	10.000	192.90	4,598.31	-769.14	-199.23	-50.05	0.29	-0.21	-1.16
4,784.00	9.300	187.70	4,690.98	-784.63	-202.07	-49.91	1.19	-0.74	-5.53
4,879.00	8.600	184.50	4,784.82	-799.32	-203.65	-48.69	0.90	-0.74	-3.37
4,974.00	8.100	186.80	4,878.82	-813.04	-205.00	-47.42	0.63	-0.53	2.42
5,068.00	7.500	192.40	4,971.95	-825.61	-207.10	-47.10	1.03	-0.64	5.96
5,163.00	5.600	187.10	5,066.32	-836.27	-209.01	-46.95	2.10	-2.00	-5.58
5,257.00	4.600	182.70	5,159.95	-844.58	-209.75	-46.11	1.14	-1.06	-4.68
5,351.00	3.700	177.30	5,253.70	-851.38	-209.79	-44.86	1.04	-0.96	-5.74
5,446.00	2.900	173.40	5,348.55	-856.83	-209.37	-43.41	0.87	-0.84	-4.11
5,541.00	2.200	166.60	5,443.45	-860.99	-208.67	-41.94	0.80	-0.74	-7.16
5,635.00	1.800	161.90	5,537.39	-864.15	-207.79	-40.48	0.46	-0.43	-5.00
5,729.00	1.400	154.40	5,631.36	-866.59	-206.84	-39.08	0.48	-0.43	-7.98
5,823.00	1.500	141.40	5,725.33	-868.58	-205.57	-37.46	0.36	0.11	-13.83

Database:	CompassVM	Local Co-ordinate Reference:	Well Pappenheim 6-62-26-8H
Company:	Bill Barrett Corp. (II)	TVD Reference:	RKB:16' @ 4751.00ft (Cade 24)
Project:	Weld Co., CO (NAD 83)	MD Reference:	RKB:16' @ 4751.00ft (Cade 24)
Site:	Sec.23-T6N-R62W	North Reference:	Grid
Well:	Pappenheim 6-62-26-8H	Survey Calculation Method:	Minimum Curvature
Wellbore:	STK1		
Design:	STK1 Plan #2 06May13 RG		

Planned Survey									
Measured Depth (ft)	Inclination (°)	Azimuth (°)	Vertical Depth (ft)	+N/-S (ft)	+E/-W (ft)	Vertical Section (ft)	Dogleg Rate (°/100ft)	Build Rate (°/100ft)	Turn Rate (°/100ft)
5,874.00	1.500	130.40	5,776.31	-869.54	-204.65	-36.37	0.56	0.00	-21.57
5,886.00	1.500	136.00	5,788.31	-869.75	-204.42	-36.11	1.22	0.00	46.67
5,917.00	1.500	131.20	5,819.29	-870.31	-203.83	-35.43	0.41	0.00	-15.48
5,949.00	2.900	96.30	5,851.27	-870.68	-202.71	-34.26	5.87	4.38	-109.06
5,980.00	7.000	82.90	5,882.15	-870.53	-200.06	-31.68	13.65	13.23	-43.23
6,012.00	11.100	73.70	5,913.75	-869.42	-195.16	-27.08	13.55	12.81	-28.75
6,043.00	15.000	72.80	5,943.94	-867.40	-188.46	-20.89	12.60	12.58	-2.90
6,075.00	18.000	83.30	5,974.63	-865.59	-179.59	-12.52	13.18	9.38	32.81
6,106.00	20.800	91.90	6,003.87	-865.22	-169.33	-2.51	12.88	9.03	27.74
6,138.00	23.200	96.50	6,033.54	-866.12	-157.39	9.38	9.23	7.50	14.38
6,169.00	27.200	96.30	6,061.58	-867.59	-144.27	22.54	12.91	12.90	-0.65
6,201.00	31.600	94.20	6,089.46	-869.01	-128.63	38.16	14.12	13.75	-6.56
6,232.00	35.700	91.90	6,115.26	-869.90	-111.49	55.17	13.85	13.23	-7.42
6,264.00	41.100	91.50	6,140.33	-870.49	-91.63	74.78	16.89	16.88	-1.25
6,295.00	46.200	92.90	6,162.75	-871.32	-70.25	95.93	16.74	16.45	4.52
6,327.00	52.700	96.90	6,183.55	-873.44	-46.05	120.09	22.42	20.31	12.50
6,358.00	56.800	93.80	6,201.44	-875.78	-20.86	145.28	15.54	13.23	-10.00
6,390.00	59.000	93.60	6,218.44	-877.53	6.19	172.17	6.90	6.88	-0.63
6,421.00	60.900	93.40	6,233.96	-879.17	32.98	198.78	6.15	6.13	-0.65
6,453.00	62.700	91.50	6,249.09	-880.37	61.15	226.67	7.68	5.63	-5.94
6,484.00	64.300	91.10	6,262.92	-881.00	88.88	254.02	5.29	5.16	-1.29
6,516.00	65.300	90.50	6,276.54	-881.40	117.84	282.53	3.56	3.13	-1.88
6,548.00	66.000	90.60	6,289.74	-881.68	146.99	311.20	2.21	2.19	0.31
6,579.00	67.900	89.90	6,301.87	-881.80	175.51	339.23	6.47	6.13	-2.26
6,610.00	71.600	90.30	6,312.60	-881.85	204.59	367.80	12.00	11.94	1.29
6,642.00	76.300	89.90	6,321.45	-881.91	235.33	398.00	14.74	14.69	-1.25
6,673.00	78.500	90.90	6,328.21	-882.12	265.58	427.74	7.76	7.10	3.23
6,705.00	81.600	91.10	6,333.74	-882.67	297.09	458.78	9.71	9.69	0.63
6,723.00	84.500	91.30	6,335.91	-883.04	314.96	476.39	16.15	16.11	1.11
6,785.00	89.600	89.80	6,339.10	-883.64	376.85	537.28	8.57	8.23	-2.42
6,817.00	90.300	90.80	6,339.13	-883.80	408.85	568.73	3.81	2.19	3.13
6,848.00	90.200	90.50	6,339.00	-884.15	439.84	599.24	1.02	-0.32	-0.97
6,880.00	90.100	90.60	6,338.91	-884.46	471.84	630.71	0.44	-0.31	0.31
6,974.00	90.900	89.10	6,338.09	-884.22	565.84	722.96	1.81	0.85	-1.60
7,069.00	92.600	87.90	6,335.19	-881.73	660.75	815.69	2.19	1.79	-1.26
7,164.00	90.600	86.90	6,332.54	-877.42	755.61	908.02	2.35	-2.11	-1.05
7,258.00	90.100	86.20	6,331.97	-871.77	849.44	999.08	0.92	-0.53	-0.74
7,353.00	90.300	85.60	6,331.63	-864.97	944.20	1,090.84	0.67	0.21	-0.63
7,447.00	92.800	87.80	6,329.09	-859.56	1,037.99	1,181.92	3.54	2.66	2.34
7,542.00	92.700	89.00	6,324.53	-856.92	1,132.84	1,274.55	1.27	-0.11	1.26
7,636.00	91.400	90.40	6,321.17	-856.42	1,226.78	1,366.70	2.03	-1.38	1.49
7,731.00	90.100	90.70	6,319.93	-857.34	1,321.76	1,460.14	1.40	-1.37	0.32
7,825.00	90.500	89.70	6,319.43	-857.66	1,415.76	1,552.50	1.15	0.43	-1.06
7,920.00	90.500	89.50	6,318.61	-857.00	1,510.75	1,645.65	0.21	0.00	-0.21
8,015.00	90.400	88.60	6,317.86	-855.43	1,605.74	1,738.62	0.95	-0.11	-0.95
8,109.00	88.900	86.90	6,318.43	-851.74	1,699.66	1,830.14	2.41	-1.60	-1.81
8,204.00	88.700	87.20	6,320.42	-846.85	1,794.51	1,922.36	0.38	-0.21	0.32
8,298.00	90.100	88.70	6,321.41	-843.49	1,888.44	2,013.95	2.18	1.49	1.60
8,393.00	89.900	86.80	6,321.41	-839.76	1,983.36	2,106.45	2.01	-0.21	-2.00
8,487.00	89.800	86.60	6,321.65	-834.35	2,077.21	2,197.58	0.24	-0.11	-0.21
8,582.00	89.000	86.20	6,322.65	-828.38	2,172.01	2,289.54	0.94	-0.84	-0.42
8,677.00	89.400	85.30	6,323.97	-821.34	2,266.74	2,381.22	1.04	0.42	-0.95
Tie In from OH @ 8677'									

Database:	CompassVM	Local Co-ordinate Reference:	Well Pappenheim 6-62-26-8H
Company:	Bill Barrett Corp. (II)	TVD Reference:	RKB:16' @ 4751.00ft (Cade 24)
Project:	Weld Co., CO (NAD 83)	MD Reference:	RKB:16' @ 4751.00ft (Cade 24)
Site:	Sec.23-T6N-R62W	North Reference:	Grid
Well:	Pappenheim 6-62-26-8H	Survey Calculation Method:	Minimum Curvature
Wellbore:	STK1		
Design:	STK1 Plan #2 06May13 RG		

Planned Survey										
Measured Depth (ft)	Inclination (°)	Azimuth (°)	Vertical Depth (ft)	+N/-S (ft)	+E/-W (ft)	Vertical Section (ft)	Dogleg Rate (°/100ft)	Build Rate (°/100ft)	Turn Rate (°/100ft)	
8,680.00	89.467	85.33	6,324.00	-821.10	2,269.73	2,384.11	2.45	2.23	1.00	
Start DLS 4.00 TFO 165.00										
8,700.00	88.694	85.54	6,324.33	-819.50	2,289.66	2,403.39	4.00	-3.86	1.04	
8,710.00	88.308	85.64	6,324.59	-818.74	2,299.63	2,413.03	4.00	-3.86	1.04	
Start 30.00 hold at 8710.00 MD										
8,740.00	88.308	85.64	6,325.47	-816.46	2,329.53	2,441.95	0.00	0.00	0.00	
Start DLS 4.00 TFO 69.52										
8,800.00	89.149	87.89	6,326.80	-813.07	2,389.42	2,500.12	4.00	1.40	3.75	
8,828.67	89.551	88.96	6,327.13	-812.28	2,418.07	2,528.11	4.00	1.40	3.75	
Start 1641.74 hold at 8828.67 MD										
8,900.00	89.551	88.96	6,327.69	-810.99	2,489.39	2,597.89	0.00	0.00	0.00	
9,000.00	89.551	88.96	6,328.47	-809.18	2,589.37	2,695.72	0.00	0.00	0.00	
9,100.00	89.551	88.96	6,329.26	-807.37	2,689.35	2,793.55	0.00	0.00	0.00	
9,200.00	89.551	88.96	6,330.04	-805.56	2,789.33	2,891.38	0.00	0.00	0.00	
9,300.00	89.551	88.96	6,330.82	-803.76	2,889.31	2,989.21	0.00	0.00	0.00	
9,400.00	89.551	88.96	6,331.61	-801.95	2,989.29	3,087.04	0.00	0.00	0.00	
9,500.00	89.551	88.96	6,332.39	-800.14	3,089.27	3,184.88	0.00	0.00	0.00	
9,600.00	89.551	88.96	6,333.18	-798.33	3,189.25	3,282.71	0.00	0.00	0.00	
9,700.00	89.551	88.96	6,333.96	-796.52	3,289.23	3,380.54	0.00	0.00	0.00	
9,800.00	89.551	88.96	6,334.74	-794.71	3,389.21	3,478.37	0.00	0.00	0.00	
9,900.00	89.551	88.96	6,335.53	-792.90	3,489.20	3,576.20	0.00	0.00	0.00	
10,000.00	89.551	88.96	6,336.31	-791.09	3,589.18	3,674.03	0.00	0.00	0.00	
10,100.00	89.551	88.96	6,337.10	-789.28	3,689.16	3,771.86	0.00	0.00	0.00	
10,200.00	89.551	88.96	6,337.88	-787.47	3,789.14	3,869.69	0.00	0.00	0.00	
10,300.00	89.551	88.96	6,338.66	-785.66	3,889.12	3,967.52	0.00	0.00	0.00	
10,400.00	89.551	88.96	6,339.45	-783.85	3,989.10	4,065.35	0.00	0.00	0.00	
10,470.41	89.551	88.96	6,340.00	-782.58	4,059.49	4,134.23	0.00	0.00	0.00	
TD at 10470.41										

Design Targets										
Target Name	Dip Angle (°)	Dip Dir. (°)	TVD (ft)	+N/-S (ft)	+E/-W (ft)	Northing (usft)	Easting (usft)	Latitude	Longitude	
- hit/miss target										
- Shape										
Pappenheim 6-62-26-8H	0.000	0.00	6,340.00	-782.58	4,059.49	1,414,221.59	3,338,652.36	40° 27' 50.62 N	104° 16' 58.33 W	
- plan hits target center										
- Point										

Plan Annotations					
Measured Depth (ft)	Vertical Depth (ft)	+N/-S (ft)	+E/-W (ft)	Comment	
8,677.00	6,323.97	-821.34	2,266.74	Tie In from OH @ 8677'	
8,680.00	6,324.00	-821.10	2,269.73	Start DLS 4.00 TFO 165.00	
8,710.00	6,324.59	-818.74	2,299.63	Start 30.00 hold at 8710.00 MD	
8,740.00	6,325.47	-816.46	2,329.53	Start DLS 4.00 TFO 69.52	
8,828.67	6,327.13	-812.28	2,418.07	Start 1641.74 hold at 8828.67 MD	
10,470.41	6,340.00	-782.58	4,059.49	TD at 10470.41	