

*The Road to Excellence Starts with Safety*

Sold To #: 300721		Ship To #: 2963111		Quote #:		Sales Order #: 9957759	
Customer: WPX ENERGY ROCKY MOUNTAIN LLC-EBUS				Customer Rep: Oaks, Rick			
Well Name: RWF		Well #: 324-36		API/UWI #: 05-045-21473			
Field: RULISON		City (SAP): RIFLE		County/Parish: Garfield		State: Colorado	
Lat: N 39.482 deg. OR N 39 deg. 28 min. 56.168 secs.				Long: W 107.837 deg. OR W -108 deg. 9 min. 47.898 secs.			
Contractor: NABORS 576		Rig/Platform Name/Num: NABORS 576					
Job Purpose: Cement Surface Casing							
Well Type: Development Well				Job Type: Cement Surface Casing			
Sales Person: MAYO, MARK				Srvc Supervisor:		MBU ID Emp #:	
Job Personnel							
HES Emp Name	Exp Hrs	Emp #	HES Emp Name	Exp Hrs	Emp #	HES Emp Name	Exp Hrs
CASTILLO, FRANCISCO P	18	513620	LYNGSTAD, FREDRICK D	18	403742	SMITH, CHRISTOPHER Scott	18
WOLFE, JON P	18	485217					
Equipment							
HES Unit #	Distance-1 way	HES Unit #	Distance-1 way	HES Unit #	Distance-1 way	HES Unit #	Distance-1 way
10722398	60 mile	10872429	60 mile	11139330	60 mile	11259884	60 mile
11808847	60 mile						
Job Hours							
Date	On Location Hours	Operating Hours	Date	On Location Hours	Operating Hours	Date	On Location Hours
12/9/12	13	0	12/10/12	5	1		
TOTAL		Total is the sum of each column separately					
Job				Job Times			
Formation Name				Date	Time	Time Zone	
Formation Depth (MD) Top SURFACE Bottom 1150				Called Out	09 - Dec - 2012	06:30	MST
Form Type BHST				On Location	09 - Dec - 2012	11:00	MST
Job depth MD 1150. ft Job Depth TVD 11500. ft				Job Started	10 - Dec - 2012	02:53	MST
Water Depth Wk Ht Above Floor 3. ft				Job Completed	10 - Dec - 2012	03:49	MST
Perforation Depth (MD) From To				Departed Loc	10 - Dec - 2012	05:00	MST
Well Data							
Description	New / Used	Max pressure psig	Size in	ID in	Weight lbm/ft	Thread	Grade
							Top MD ft
							Bottom MD ft
							Top TVD ft
							Bottom TVD ft
Sales/Rental/3 <sup>rd</sup> Party (HES)							
Description				Qty	Qty uom	Depth	Supplier
PLUG,CMTG,TOP,9 5/8,HWE,8.16 MIN/9.06 MA				1	EA		
Tools and Accessories							
Type	Size	Qty	Make	Depth	Type	Size	Qty
Guide Shoe	9.625	1	WTF	1129	Packer		
Float Shoe					Bridge Plug		
Float Collar	9.625	1	WTF	1084.86	Retainer		
Insert Float							
Stage Tool							
Miscellaneous Materials							
Gelling Agt		Conc		Surfactant		Conc	Acid Type
Treatment Fld		Conc		Inhibitor		Conc	Sand Type
							Qty
							Conc
							%
Fluid Data							
Stage/Plug #: 1							
Fluid #	Stage Type	Fluid Name		Qty	Qty uom	Mixing Density lbm/gal	Yield ft3/sk
							Mix Fluid Gal/sk
							Rate bbl/min
							Total Mix Fluid Gal/sk

**HALLIBURTON****Cementing Job Summary**

Stage/Plug #: 1									
Fluid #	Stage Type	Fluid Name	Qty	Qty uom	Mixing Density lbm/gal	Yield ft <sup>3</sup> /sk	Mix Fluid Gal/sk	Rate bbl/min	Total Mix Fluid Gal/sk
1	Water Spacer		20.00	bbl	.	.0	.0	4	
2	Lead Cement	VERSACEM (TM) SYSTEM (452010)	160.0	sacks	12.3	2.38	13.75	8	13.75
		13.75 Gal FRESH WATER							
3	Tail Cement	VERSACEM (TM) SYSTEM (452010)	160.0	sacks	12.8	2.11	11.75	8	11.75
4	Displacement		85.00	bbl	.	.0	.0	10	
Calculated Values		Pressures		Volumes					
Displacement	85	Shut In: Instant		Lost Returns	NONE	Cement Slurry	128	Pad	
Top Of Cement	SURFACE	5 Min		Cement Returns	20	Actual Displacement	86	Treatment	
Frac Gradient		15 Min		Spacers	20	Load and Breakdown		Total Job	
Rates									
Circulating		Mixing		Displacement		Avg. Job			
Cement Left In Pipe	Amount	0 ft	Reason	Shoe Joint					
Frac Ring # 1 @	ID	Frac ring # 2 @	ID	Frac Ring # 3 @	ID	Frac Ring # 4 @	ID		
The Information Stated Herein Is Correct				Customer Representative Signature					



*The Road to Excellence Starts with Safety*

Sold To #: 300721	Ship To #: 2963111	Quote #:	Sales Order #: 9957759
Customer: WPX ENERGY ROCKY MOUNTAIN LLC-EBUS	Customer Rep: Oaks, Rick		
Well Name: RWF	Well #: 324-36	API/UWI #: 05-045-21473	
Field: RULISON	City (SAP): RIFLE	County/Parish: Garfield	State: Colorado
Legal Description:			
Lat: N 39.482 deg. OR N 39 deg. 28 min. 56.168 secs.		Long: W 107.837 deg. OR W -108 deg. 9 min. 47.898 secs.	
Contractor: NABORS 576	Rig/Platform Name/Num: NABORS 576		
Job Purpose: Cement Surface Casing			Ticket Amount:
Well Type: Development Well	Job Type: Cement Surface Casing		
Sales Person: MAYO, MARK	Srvc Supervisor:	MBU ID Emp #:	

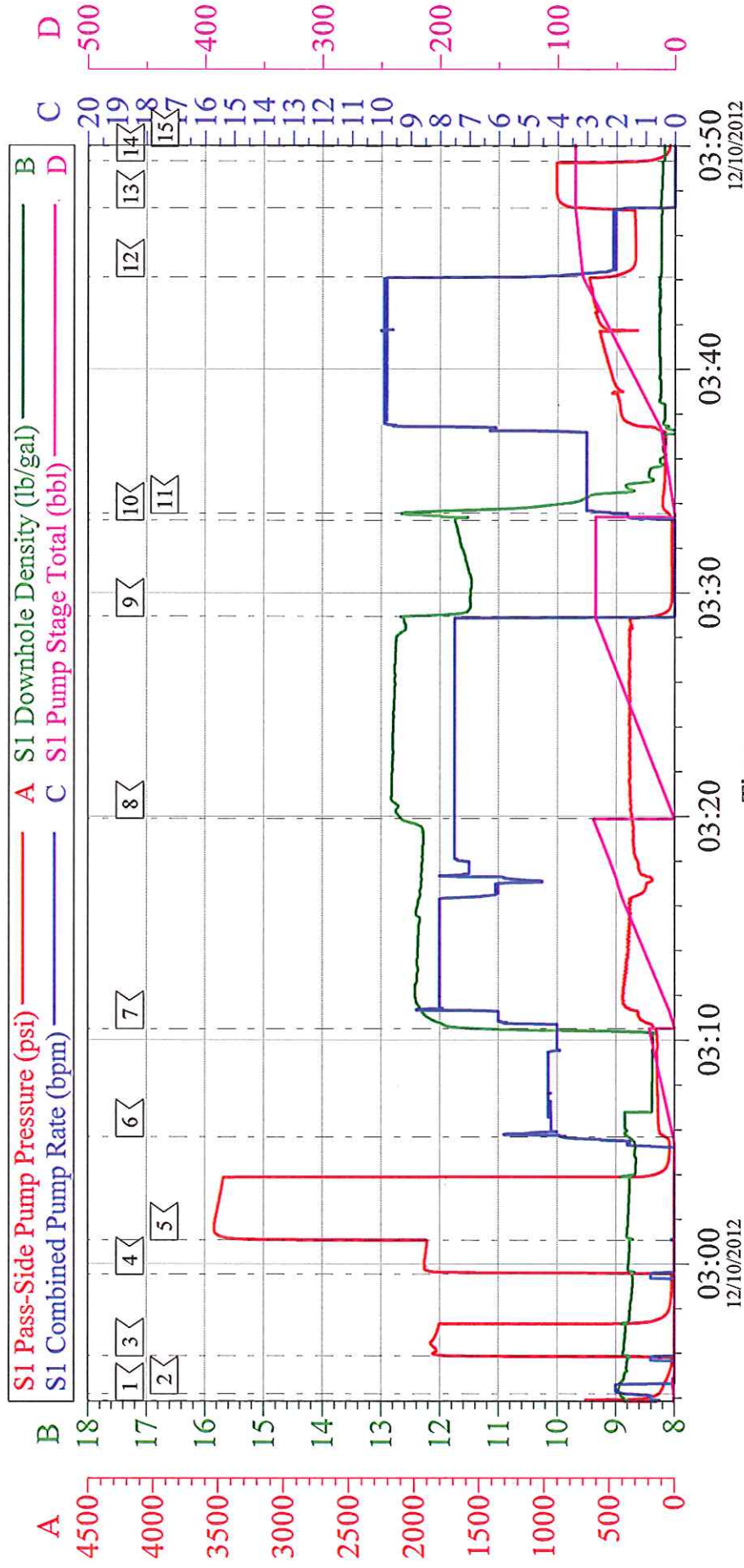
Activity Description	Date/Time	Cht #	Rate bbl/min	Volume bbl		Pressure psig		Comments
				Stage	Total	Tubing	Casing	
Pre-Convoy Safety Meeting	12/09/2012 09:20							ALL HES PERSONEL
Crew Leave Yard	12/09/2012 09:30							
Arrive At Loc	12/09/2012 11:00							RIG WAS PULLING DRILL PIPE OUT OF HOLE WHEN HALLIBURTON CEMENT CREW ARRIVED ON LOCTION/RIG BEGAN TO RUN CASING AT 12:30pm/RIG WAS UNABLE TO RUN CASING PAST 100'. THEY DECIDED TO PULL CASING OUT AND CONDITION THE HOLE AT 13:30hrs
Assessment Of Location Safety Meeting	12/09/2012 11:10							ALL HES PERSONEL/RIG BEGAN TO RUN CASING BACK IN THE HOLE AGAIN AT 20:00hrs/RIG LANDED CASING AT 22:00pm
Rig-Up Equipment	12/09/2012 14:00							1-ELITE, 1-660 BULK TRUCK, IRON, CEMENT HEAD
Rig-Up Completed	12/09/2012 14:30							HALLIBURTON HAD TO CALL FOR ANOTHER PLUG CONTAINER DUE TO MALFUNCTION OF THE UNIT. HOTSHOT

## Cementing Job Log

Activity Description	Date/Time	Cht #	Rate bbl/min	Volume bbl		Pressure psig		Comments
				Stage	Total	Tubing	Casing	
Pre-Job Safety Meeting	12/10/2012 02:30							ALL HES PERSONEL AND RIG CREW
Start Job	12/10/2012 02:53							TD-1150-' TP- 1129.02', SJ- 44.16, CSG- 9.625" 32.3#, H-40, OH- 13.5",
Other	12/10/2012 02:54		2	2			145.0	FILL LINES
Other	12/10/2012 02:55		0.2	0.2				STALL OUT/PRESSUE HELD AT 1920 PSI
Pressure Test	12/10/2012 03:01		0.2	0.2				PRESSURE HELD AT 3520 PSI
Pump Spacer 1	12/10/2012 03:05		4	20			145.0	FRESH WATER
Pump Lead Cement	12/10/2012 03:10		8	67.8			340.0	160 SKS, 12.3 PPG, 2.38 FT3/SK, 13.75 GAL/SK
Pump Tail Cement	12/10/2012 03:19		8	60			347.0	160 SKS, 12.8 PPG, 2.11 FT3/ SK, 11.75 GAL/SK
Shutdown	12/10/2012 03:28							
Drop Top Plug	12/10/2012 03:33							PLUG DROP VERIFIED BY CUSTOMER
Pump Displacement	12/10/2012 03:33		10	75			700.0	FRESH WATER, GOT 20 BBLS/47 SKS OF CEMENT TO SURFACE
Slow Rate	12/10/2012 03:44		2	10			350.0	
Bump Plug	12/10/2012 03:47			85			900.0	
Check Floats	12/10/2012 03:49							FLOATS HELD
End Job	12/10/2012 03:49							
Safety Meeting - Departing Location	12/10/2012 03:50							
Post-Job Safety Meeting (Pre Rig-Down)	12/10/2012 03:55							ALL HES PERSONEL
Other	12/10/2012 03:55							THANK YOU FOR CHOOSING HALLIBURTON, KEVIN MILLER AND CREW
Depart Location for Service Center or Other Site	12/10/2012 04:00							



# WPX RWF 324-36 SURFACE

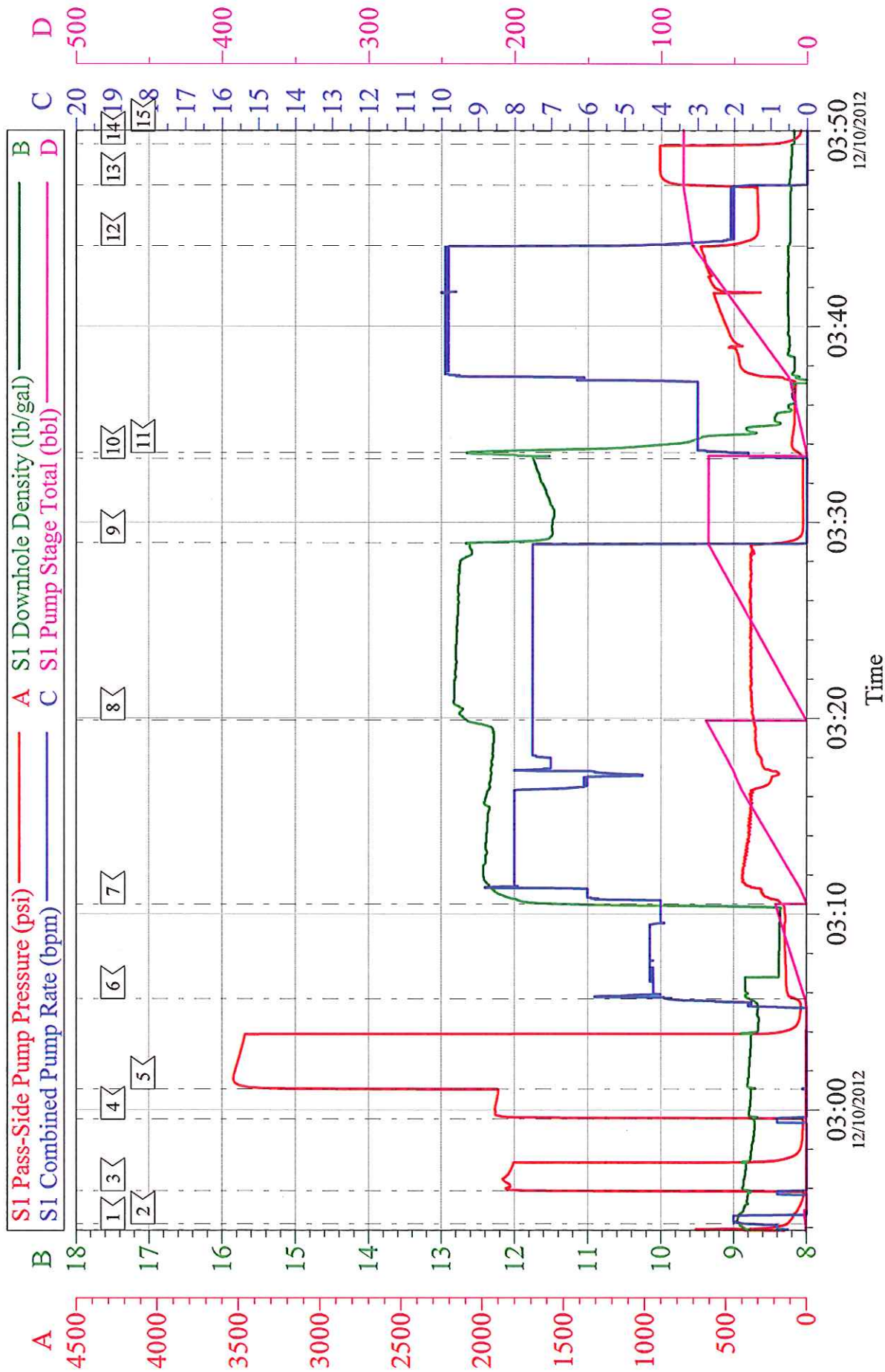


Local Event Log								
1	START JOB	02:53:53	2	FILL LINES	02:54:11	3	STALL OUT	02:55:53
4	STALL OUT	02:59:32	5	TEST LINES	03:01:04	6	SPACER	03:05:41
7	LEAD SLURRY	03:10:31	8	TAIL SLURRY	03:19:54	9	SHUT DOWN	03:28:56
10	DROP PLUG	03:33:15	11	DISPLACEMENT	03:33:33	12	SLOW RATE	03:44:07
13	BUMP PLUG	03:47:12	14	CHECK FLOATS	03:49:19	15	END JOB	03:49:58

Customer: WPX ENERGY ROCKY MOUNTAIN LLC-EBUS		Job Date: 09-Dec-2012	Sales Order #: 9957759
Well Description: RWF 324-36		Job Type: SURFACE	ADC Used: YES
Company Rep: RICK OAKS		Cement Supervisor: JAVIER CASTILLO	Elite #7: CHRIS SMITH

OptiCem v6.4.10  
10-Dec-12 04:24

# WPX RWF 324-36 SURFACE



Customer: WPX ENERGY ROCKY MOUNTAIN LLC-EBUS Well Description: RWF 324-36 Company Rep: RICK OAKS	Job Date: 09-Dec-2012 Job Type: SURFACE Cement Supervisor: JAVIER CASTILLO	Sales Order #: 9957759 ADC Used: YES Elite #7: CHRIS SMITH
	OptiCem v6.4.10 10-Dec-12 04:25	