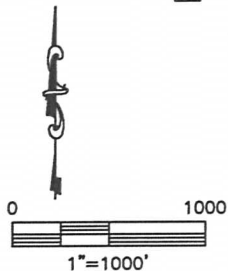
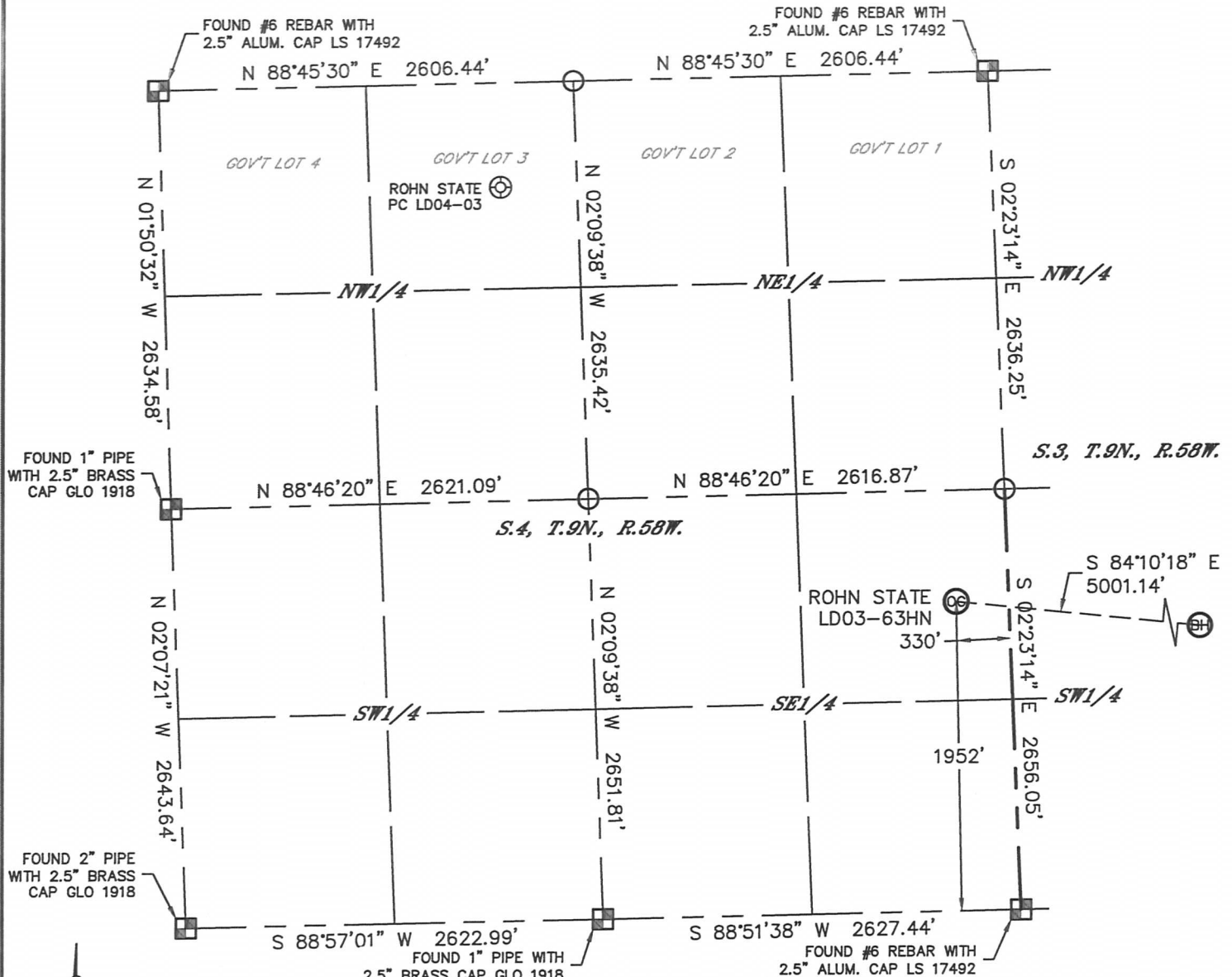


## WELL LOCATION CERTIFICATE

THIS MAP DOES NOT REPRESENT A BOUNDARY SURVEY

SECTION: 4  
TOWNSHIP: 9N  
RANGE: 58W

In accordance with a request from Nate McCorkell with Noble Energy Inc.  
Lat40°, Inc. has determined the surface location of the ROHN STATE LD03-63HN to be 1952' from the  
SOUTH line and 330' from the EAST line as measured at right angles from the section lines of Section 4,  
Township 9 North, Range 58 West and the bottom hole to be 1320' from the SOUTH line and 660' from  
the EAST line as measured at right angles from the section lines of Section 3, Township 9 North, Range  
58 West of the Sixth Principal Meridian, County of Weld, State of Colorado.

I hereby state that this Well Location Certificate was prepared by me, or under my direct supervision,  
that the fieldwork was completed on 11/30/2012, for and on behalf of Noble Energy Inc.  
That this is not a Land Survey Plat or an Improvement Survey Plat, and that it is not to be relied  
upon for establishment of fence, building, or other future improvement lines.

## NOTE:

- 1) Bearings shown are Grid Bearings of the Colorado State Plane Coordinate System, North Zone, North American Datum 1983/2007. The lineal dimensions as contained herein are based upon the "U.S. Survey Foot."
- 2) Ground elevations are based on an observed GPS elevation (NAVD 1988 DATUM).
- 3) NEAREST EXISTING WELL: ROHN STATE PC LD04-03, 3886'
- 4) IMPROVEMENTS: See LOCATION DRAWING for all visible improvements within 400' of disturbed area.
- 5) SURFACE USE: RANGELAND
- 6) INSTRUMENT OPERATOR: BRIAN ROTTINGHAUS

## SURFACE LOCATION

LAT: 40.77851°N  
LONG: 103.86135°W  
PDOP: 1.5  
ELEV: 4705'  
1/4, 1/4: NE1/4SE1/4  
NEAREST PROPERTY LINE: 330' EAST



## BOTTOM HOLE

LAT: 40.77686°N  
LONG: 103.84342°W

## NOTE

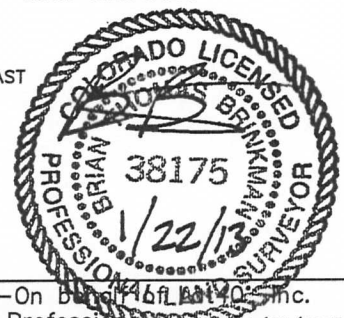
According to Colorado law, you must commence any legal action based upon any defect in this W.L.C. within three years after you discover such defect. In no event, may any action based upon any defect in this survey be commenced more than ten years after the date of the certificate shown hereon. (13-80-105 C.R.S.)

## LEGEND

-  = ALIQUOT MONUMENT AS DESCRIBED  
 = CALCULATED POSITION

## SHEET 1 OF 2

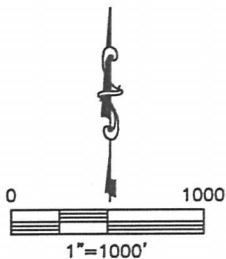
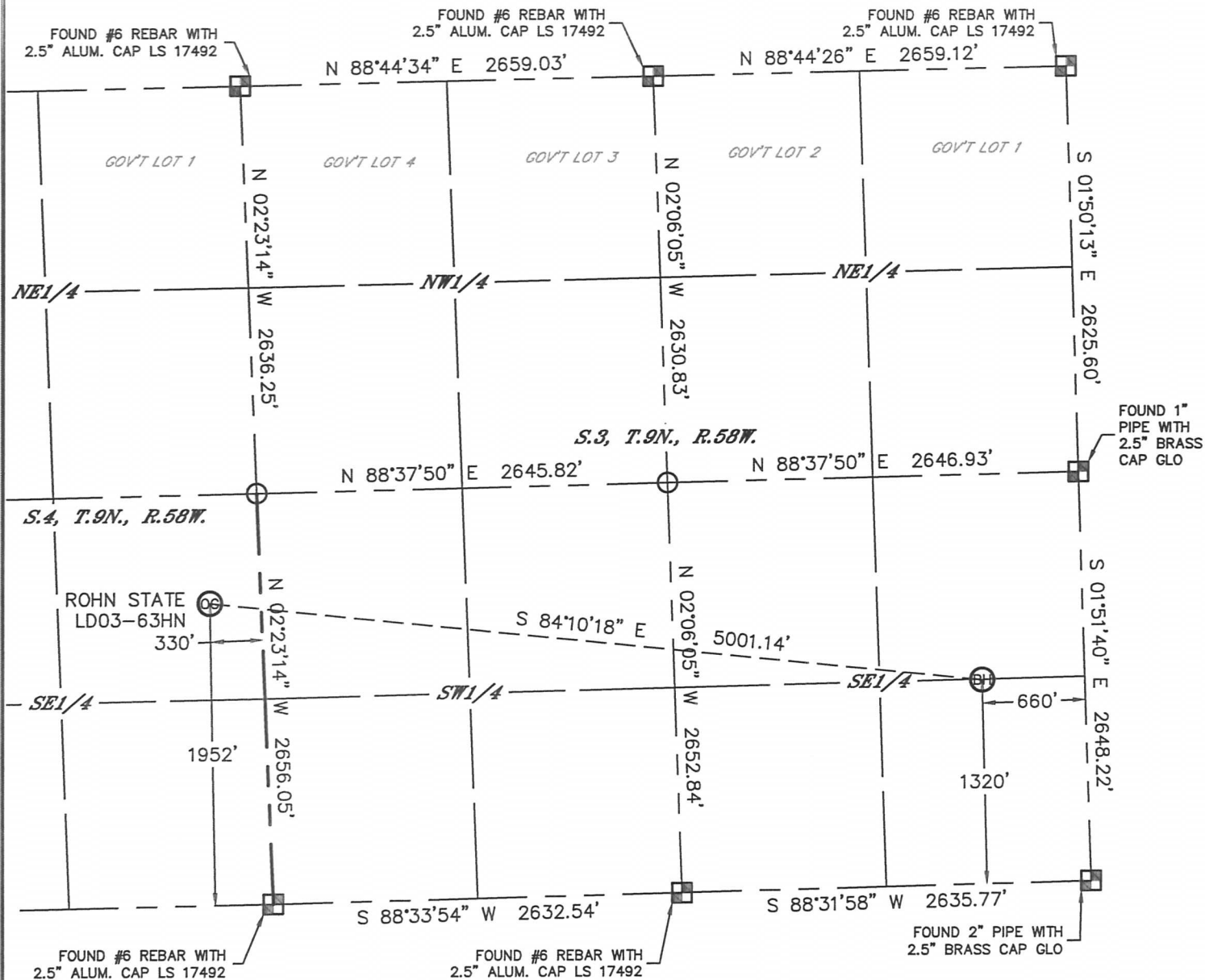
Brian T. Brinkman-On behalf of Lat40°, Inc.  
Colorado Licensed Professional Land Surveyor No. 38175  
DATE: 1/22/2013  
PROJECT#: 2012159



# WELL LOCATION CERTIFICATE

THIS MAP DOES NOT REPRESENT A BOUNDARY SURVEY

SECTION: 4  
TOWNSHIP: 9N  
RANGE: 58W



## NOTE

According to Colorado law, you must commence any legal action based upon any defect in this W.L.C. within three years after you discover such defect. In no event, may any action based upon any defect in this survey be commenced more than ten years after the date of the certificate shown hereon. (13-80-105 C.R.S.)

## LEGEND

- = ALIQUOT MONUMENT AS DESCRIBED
- = CALCULATED POSITION

## SHEET 2 OF 2

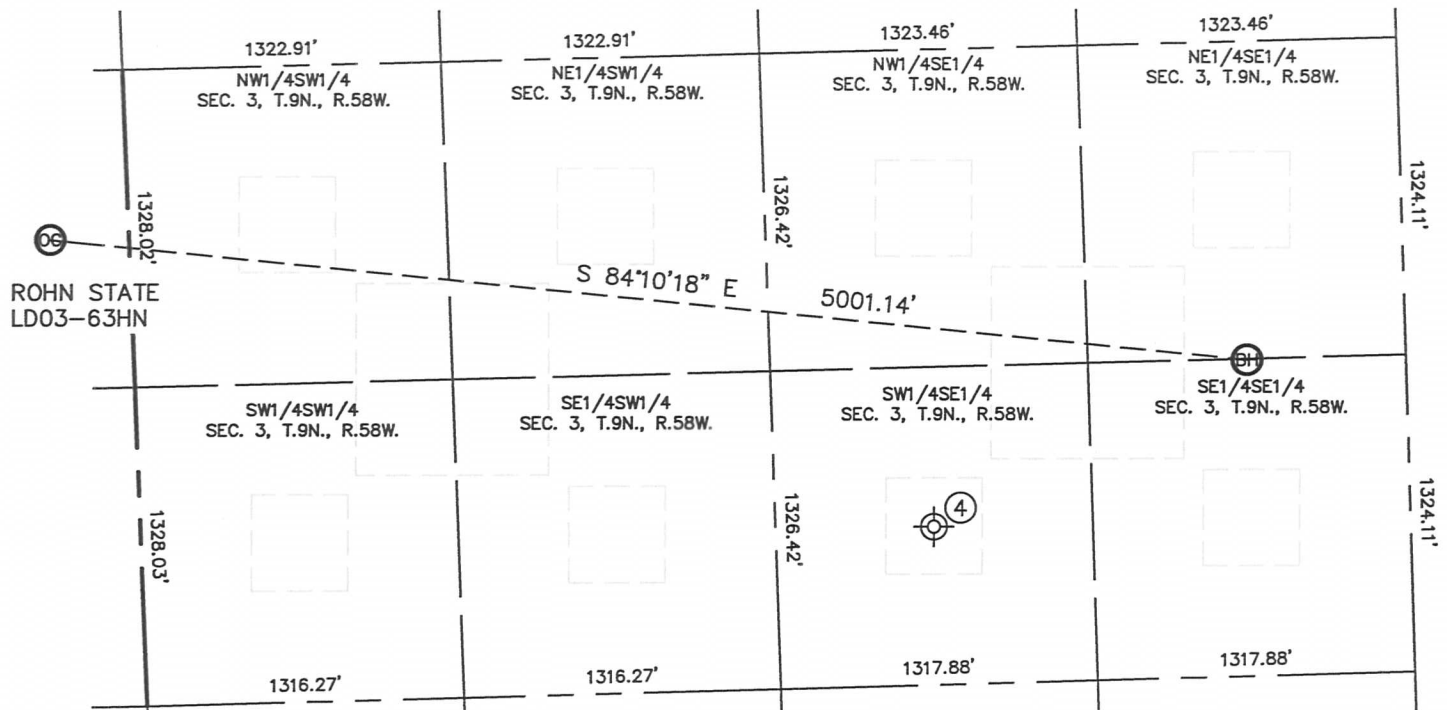
Brian T. Brinkman—On behalf of Lat40°, Inc.  
Colorado Licensed Professional Land Surveyor No. 38175  
DATE: 1/22/2013  
PROJECT#: 2012159



# SITE SKETCH

ROHN STATE LD03-63HN

SECTION: 4  
TOWNSHIP: 9N  
RANGE: 58W



④

ALICE NAY 1  
Drilled & Abandoned  
SW1/4SE1/4  
660' FSL (COGCC)  
1980' FEL (COGCC)  
LAT-40.77484°N (COGCC)  
LONG-103.84826°W (COGCC)  
PDOP:N/A  
ELEV: 4658' (COGCC)

